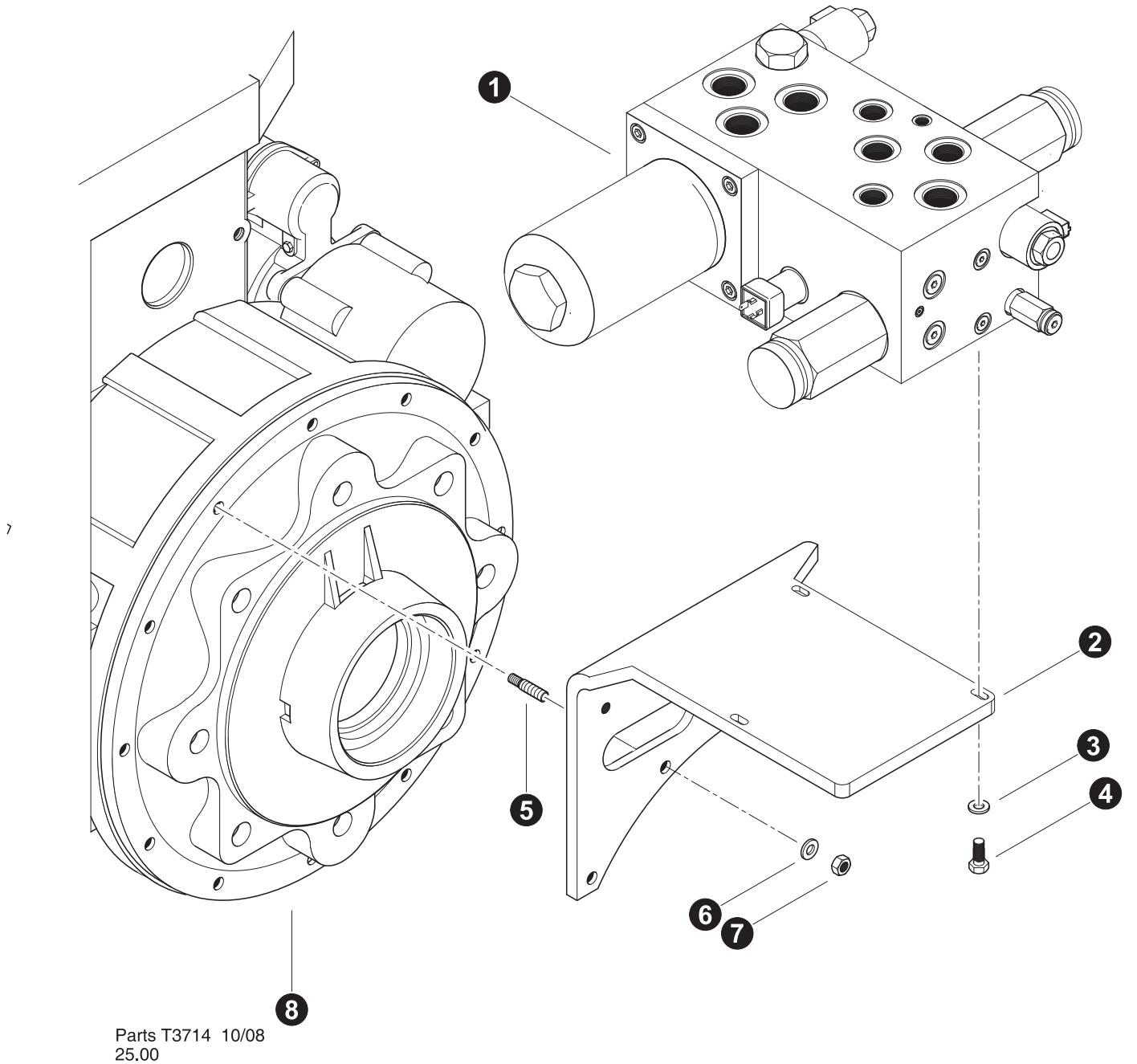


Section DH-1

Drive Hydraulics - Charge Pressure Circuit



CHARGE FILTER MANIFOLD INSTALLATION

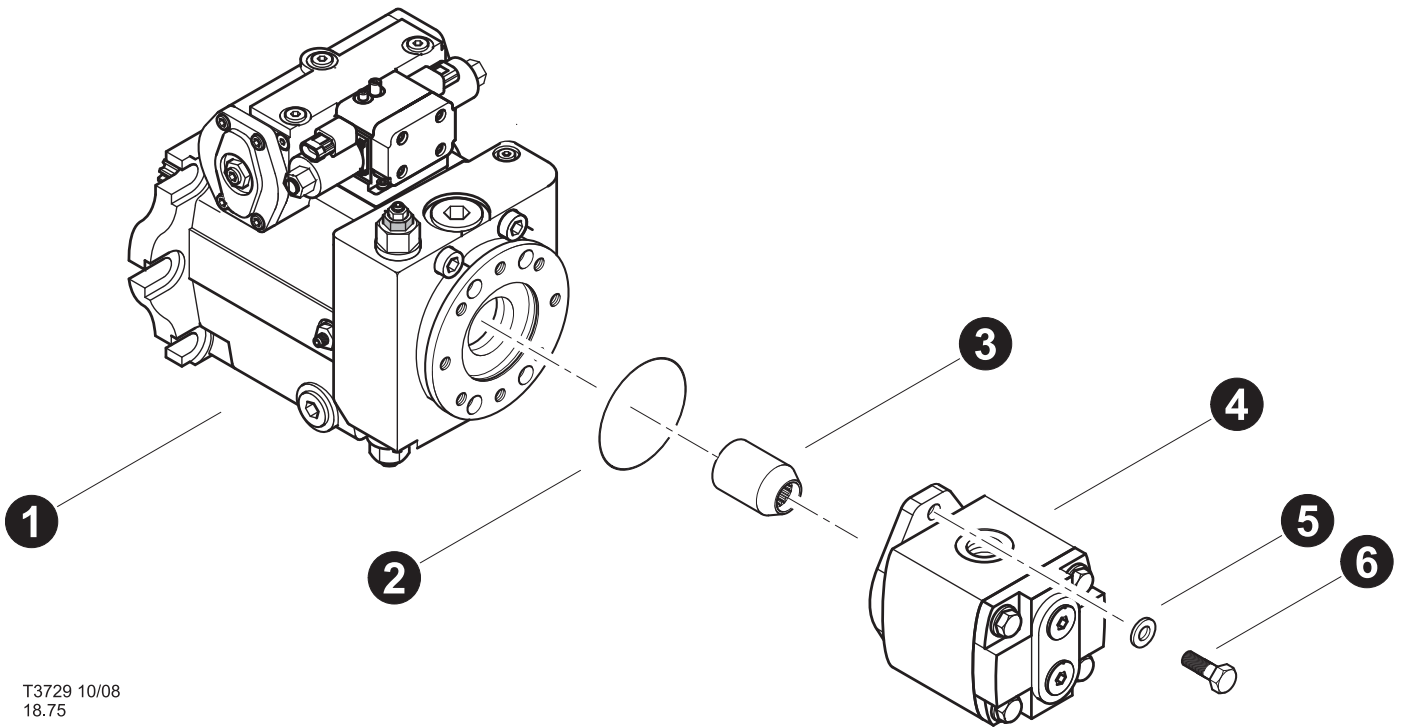
REF	PART #	QTY	DESCRIPTION	SEE SECTION
1	REF	1	VALVE, FAN CONTROL.....	UP-3
2	52515-DH	1	BRACKET, CHARGE/FAN VALVE	
3	15528-DH	3	WASHER, SAE FLAT - .375"	
4	11707-DH	3	BOLT - .375" X 1"	
5	15531-DH	3	STUD, threaded - 10mm x 45mm (See Note #1 below)	
6	15528-DH	3	WASHER, SAE flat - 3/8"	
7	15530-DH	3	NUT, hex - 10mm (See Note #2 below) (Torque to 40 ft.lbs. (53 Nm))	
8	REF	1	PUMP DRIVE TRANSMISSION.....	EE-4



See referenced page for component or assembly breakdown.






Kit or Assembly - includes all items indented underneath.

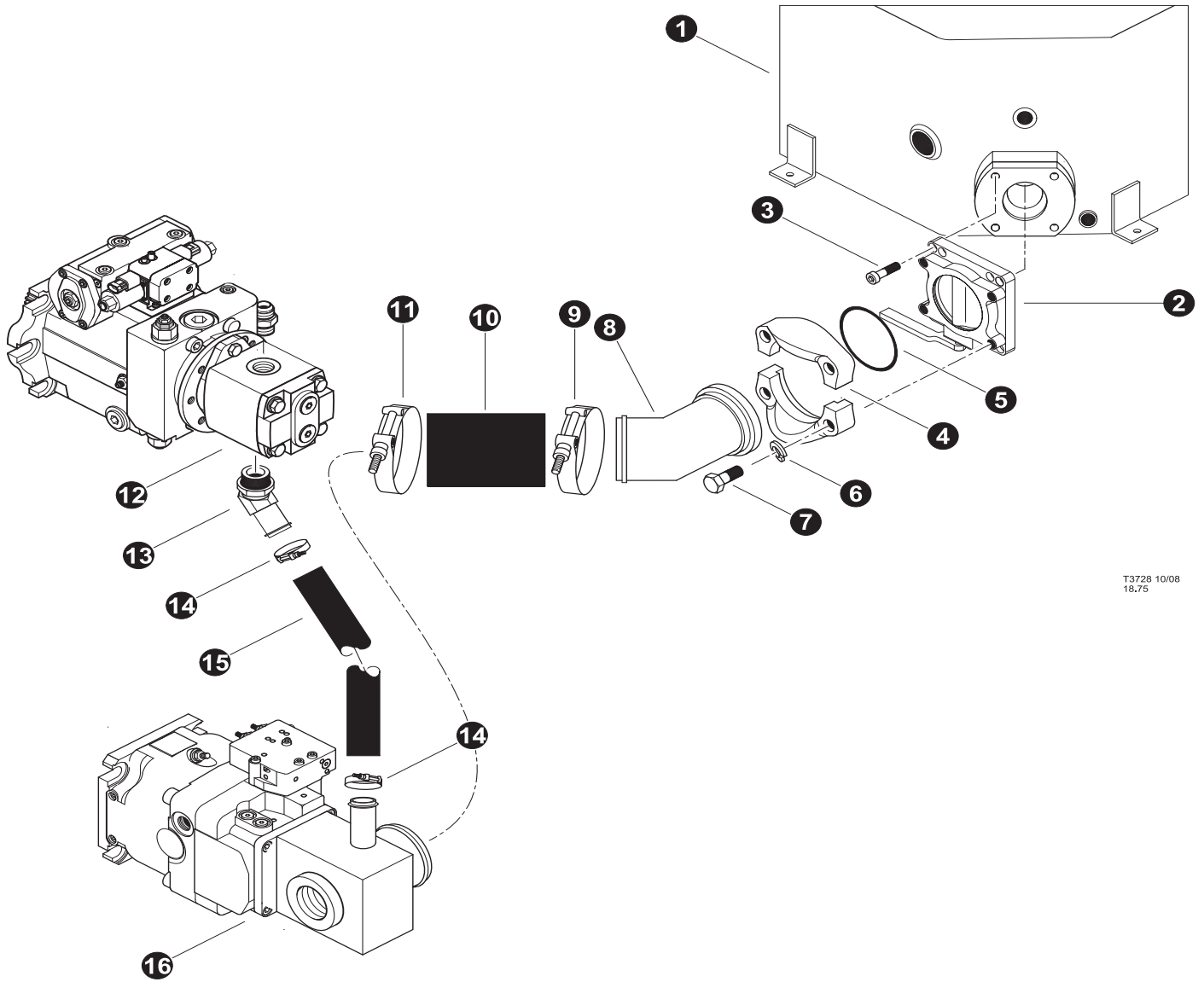


T3729 10/08
18.75

CHARGE PUMP INSTALLATION





REF	PART #	QTY	DESCRIPTION	SEE SECTION
1	REF.	1	 TRACK DRIVE PUMP	DH-3
2	21624-DH	1	O-RING, CHARGE PUMP PILOT (AA4VG90)	
3	21621-DH	1	COUPLING,	
4	REF	1	 CHARGE PUMP ASSEMBLY.....	DH-4
5	18735-DH	2	WASHER, FLAT - 12MM	
6	18415-DH	2	BOLT - 12MM-1.75P X 30MM	



 See referenced page for component or assembly breakdown.

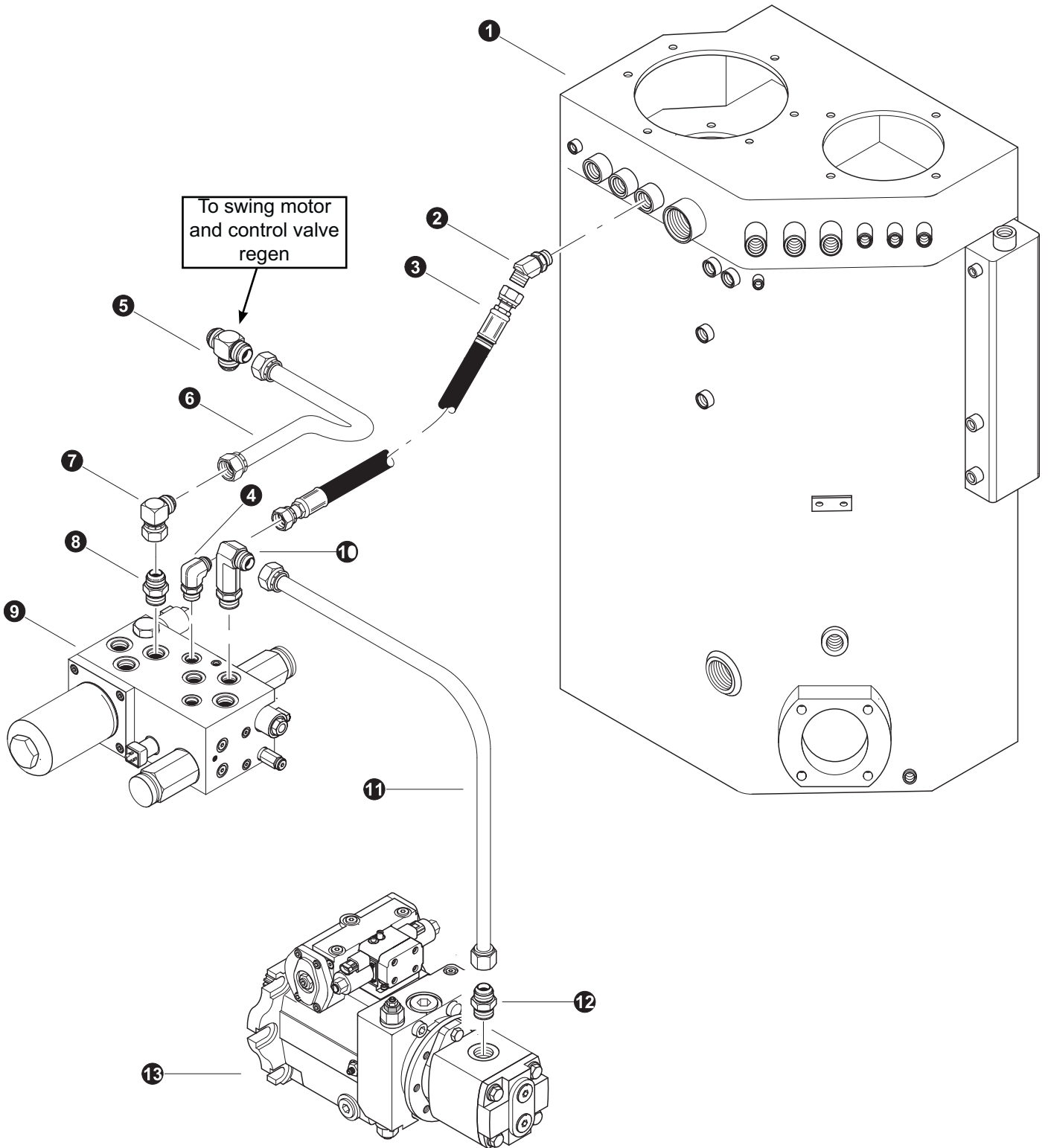


T3728 10/08
18,75

CHARGE PUMP INLET (SUCTION)

REF	PART #	QTY		DESCRIPTION	SEE SECTION
1	REF	1		HYDRAULIC TANK ASSEMBLY.....	UP-2
2	51619-DH	1		VALVE, SHUT OFF - BUTTERFLY (4")	
3	23095-DH	4		BOLT, ALLEN HEAD - .625" x 2"	
4	51625-DH	1		KIT, FLANGE - SUCTION TUBE (4")	
5		1		O-RING - SUCTION TUBE (4")	
6	10721-DH	4		WASHER, LOCK - .625"	
7	15526-DH	4		BOLT - .625" X 2"	
8	52507-DH	1		TUBE, SUCTION 180 DEG 3.0" TRACK MACH	
9	17717-FF	1		CLAMP, STRAP BAND - 4.75"	
10	-DH	1		HOSE ASSEMBLY - 2008-64-0-0	
11	17717-FF	1		CLAMP, STRAP BAND - 4.75"	
12	REF.	1		WHEEL DRIVE CHARGE PUMP.....	DH-4
13	26317-DH	1		MALE ORB 90 DEGREE HOSE BARB #12	
14	15641-DH	2		CLAMP, strap band - 2"	
15	-DH	1		HOSE ASSEMBLY - 2008-24-0-0	
16	REF.	1		IMPLEMENT PUMP.....	HH-1


-  See referenced page for component or assembly breakdown.
-  Kit or Assembly - includes all items indented underneath.



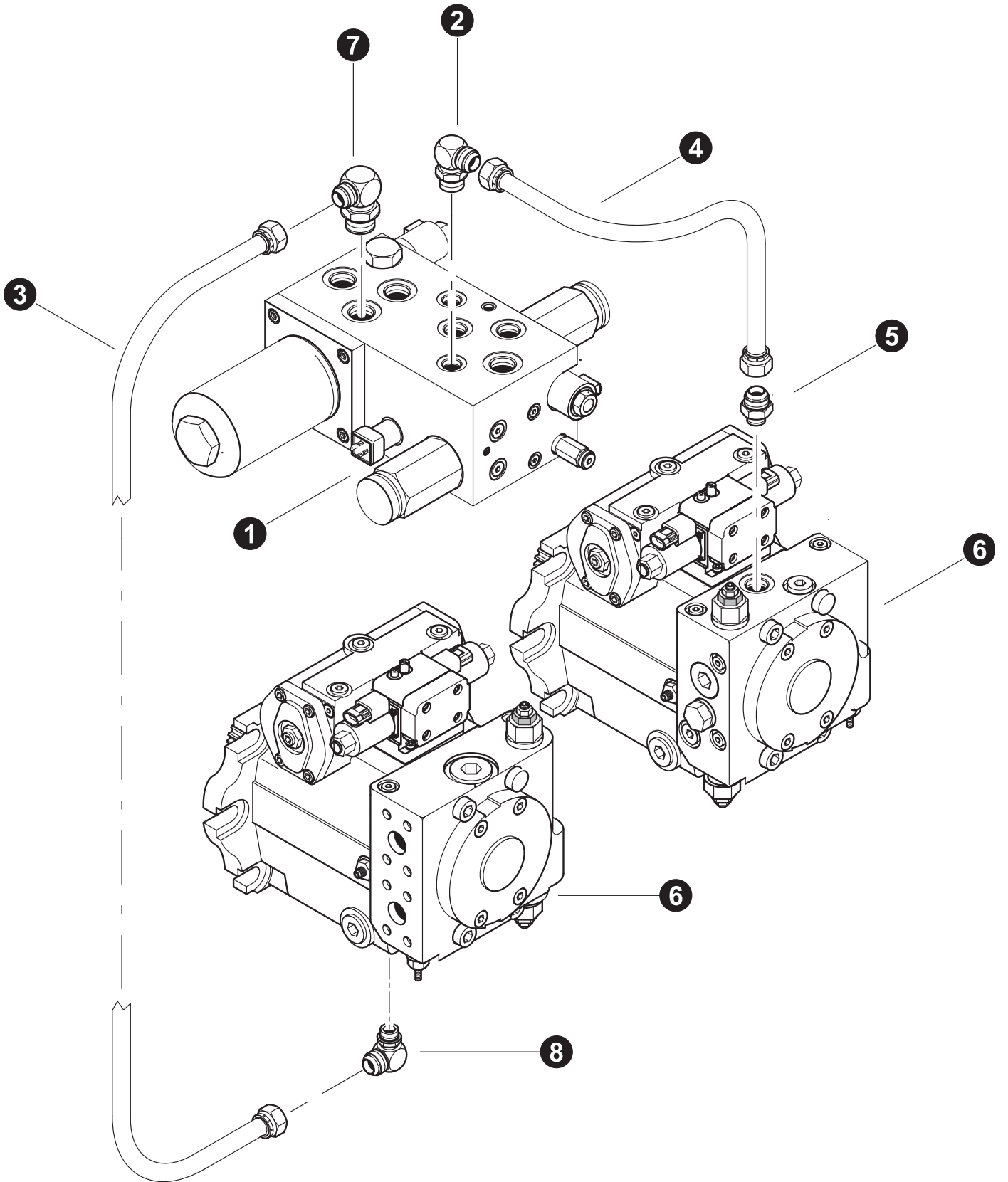
Parts T3415 10/08
18.75

CHARGE CIRCUIT (Pressure, Tank, and Regen)

REF	PART #	QTY	DESCRIPTION	SEE SECTION
1	REF	1	HYDRAULIC TANK ASSEMBLY.....	UP-2
2	19127-DH	1	ELBOW, 45 - FF2068T-1212S	
3	-DH	1	HOSE ASSEMBLY - 2136 12 12OS 1204 (T2 port to Hyd Tank Return)	
4	15484-DH	1	ELBOW, 90 - 16 C5OX-S	
5	52970-DH	1	TEE, UNION - 16 JTXO	
6	53128-DH	1	TUBELINE, CHARGE/FAN MANIFOLD 'T1' PORT	
7	52968-DH	1	ELBOW, 90 - 16 C6XO JIC	
8	15497-DH	1	CONNECTOR, STR - 16 F5OX-S	
9	REF	1	FAN CONTROL MANIFOLD.....	UP-3
10	52971-DH	1	ELBOW, 90 - 16 CC5OX JIC/ORB (LONG)	
11	53129-DH	1	TUBELINE, CHARGE PUMP - Track Machine	
12	15498-DH	1	CONNECTOR, STR - 6400-16-20	
13	REF	1	TRACK DRIVE CHARGE PUMP	DH-4


 See referenced page for component or assembly breakdown.

Kit or Assembly - includes all items indented underneath.

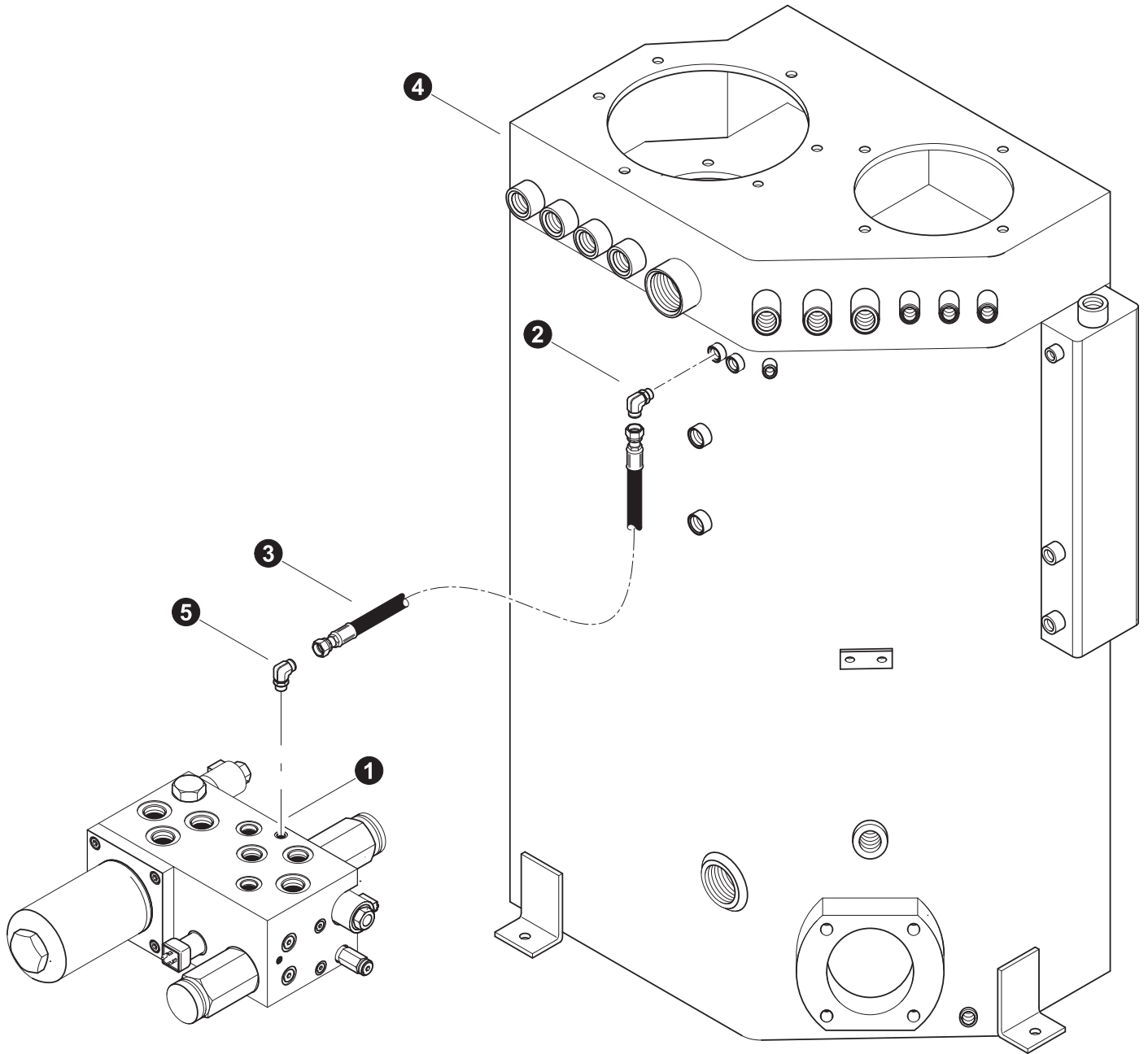


Parts T3727 10/08
18.75

WHEEL DRIVE PUMP CHARGE PRESSURE INLET

REF	PART #	QTY	DESCRIPTION	SEE SECTION
1	REF	1	FAN CONTROL / CHARGE MANIFOLD	UP-3
2	11306-DH	1	ELBOW, 90 12 C5OX-S	
3	52593-DH	1	TUBELINE, CHARGE (LH PUMP) / F1 MANIFOLD	
4	53594-DH	1	TUBELINE, CHARGE (LH PUMP) / F1 MANIFOLD	
5	15494-DH	1	CONNECTOR, STR - 6400-12-10	
6	REF.	1	 TRACK DRIVE PUMP	DH-4
7	53033-DH	1	ELBOW, 90 - 12 JIC X 16 ORB	
8	53032-DH	1	ELBOW, 90 - 12 JIC X 10 ORB	


 See referenced page for component or assembly breakdown.




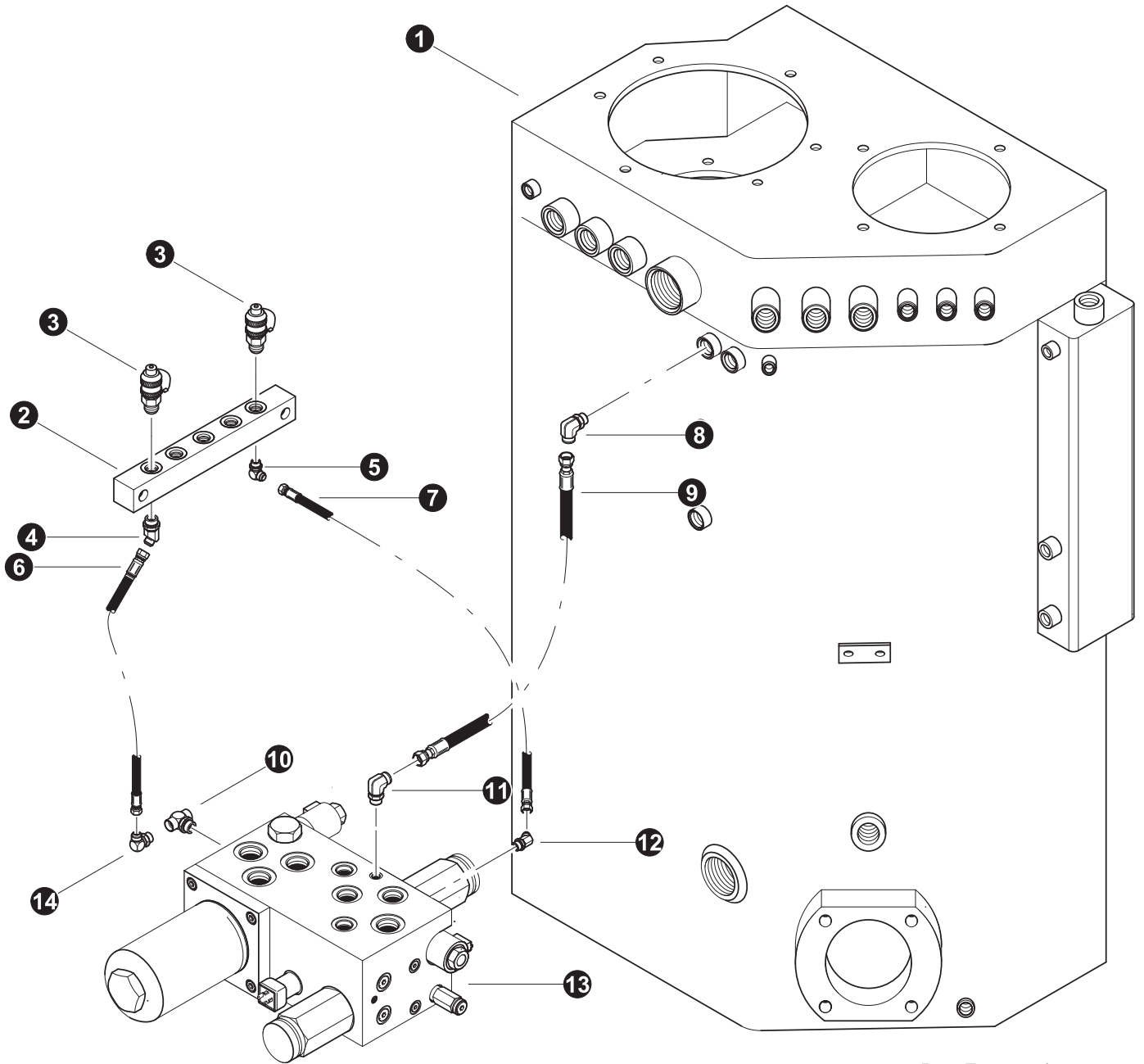
Parts T3625 08/08
18.75

CHARGE FILTER MANIFOLD DRAIN LINE

REF	PART #	QTY	DESCRIPTION	SEE SECTION
1	REF	1	FAN CONTROL / CHARGE MANIFOLD	UP-3
2	20031-DH	1	ELBOW, 90 - 6-8 C5OLO-S	
3	-DH	1	HOSE ASSEMBLY - 2026 06 06OS 06OS	
4	REF	1	HYDRAULIC TANK ASSEMBLY.....	UP-2
5	16296-DH	1	ELBOW, 90 - FF1868T-0606S	

 See referenced page for component or assembly breakdown.


 Kit or Assembly - includes all items indented underneath.



Parts T3716 10/08
18.75

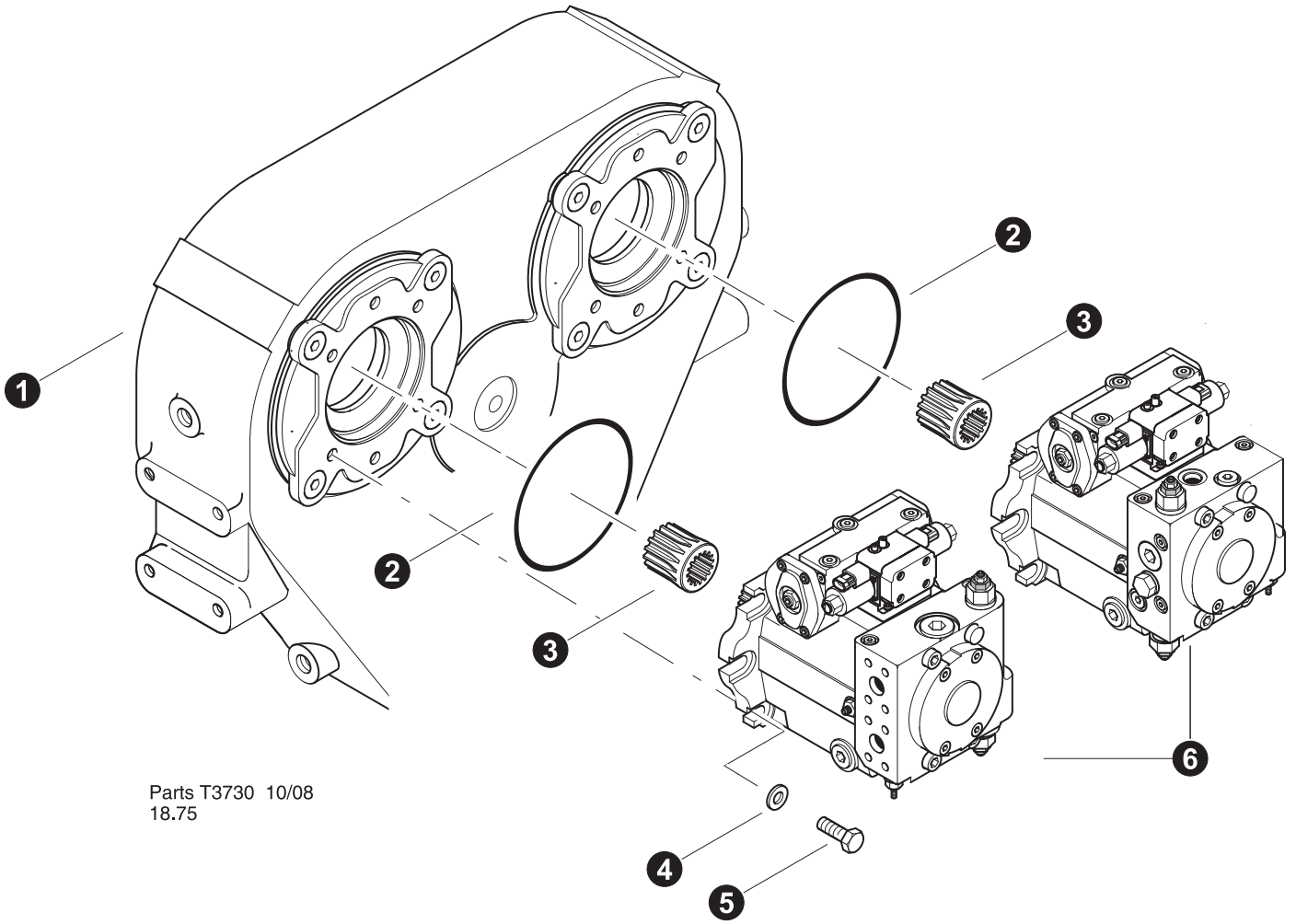
CHARGE FILTER MANIFOLD GAUGE PORT LINE

REF	PART #	QTY	DESCRIPTION	SEE SECTION
1	REF	1	HYDRAULIC TANK ASSEMBLY.....	UP-2
2	22287-DH	1	MANIFOLD, PRESSURE CHECK	
3	16037-DH	2	Gauge Tap 1/4" Sae	
4	51884-DH	1	ELBOW, 45 - (4 V50X-S)	
5	51931-DH	1	ELBOW, 90 - 4-6 C50X-S (JIC)	
6	-DH	1	HOSE ASSEMBLY - 2008 02 04JS 04JS	
7	-DH	1	HOSE ASSEMBLY - 2015 02 04JS 04JS	
8	20031-DH	1	ELBOW, 90 - 6-8 C5OLO-S	
9	-DH	1	HOSE ASSEMBLY - 2022 06 06OS 06OS	
10	24293-DH	1	TEE - 4-G5G5JAO-S	
11	16296-DH	1	ELBOW, 90 - FF1868T-0606S	
12	51884-DH	1	ELBOW, 45 - (4 V50X-S)	
13	REF	1	FAN CONTROL MANIFOLD.....	DH-4
14	15480-DH	1	ELBOW, 90 - 6801-6	

 See referenced page for component or assembly breakdown.



Section DH-2


Drive Hydraulics - Track Drive Pump Circuit

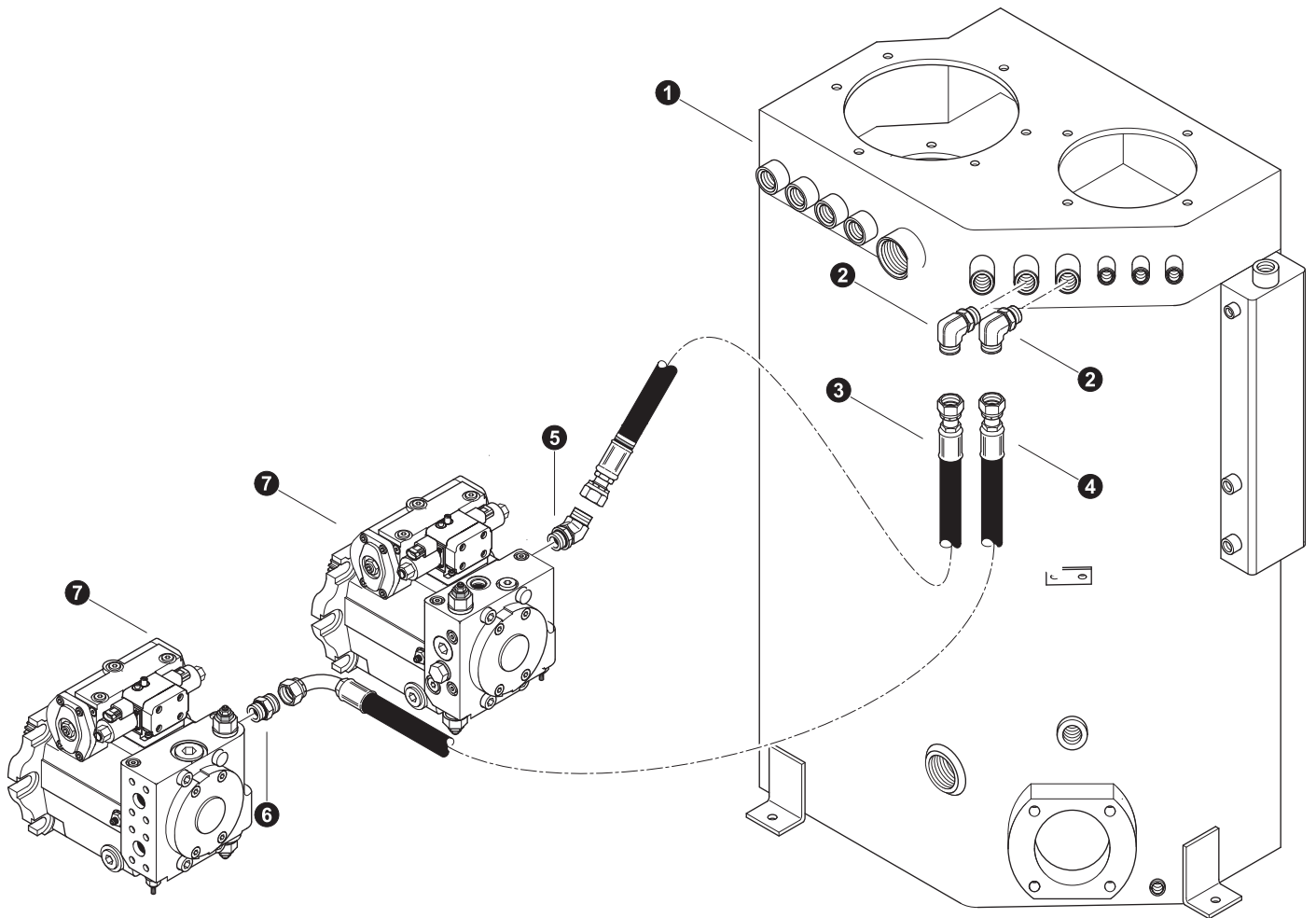


Parts T3730 10/08
18.75

TRACK DRIVE PUMP INSTALLATION

REF	PART #	QTY	DESCRIPTION	SEE SECTION
1	REF.	1	 TRANSMISSION tripple pump drive.	EE-4
2	53718-DH	2	ORING, track drive pump pilot	
3	4028056-DH	2	ADAPTER, Sleeve 14 tooth "C"	
4	-DH	4	WASHER,	
5	-DH	2	BOLT -	
6	REF.	1	 TRACK DRIVE PUMP	DH-4



 See referenced page for component or assembly breakdown.




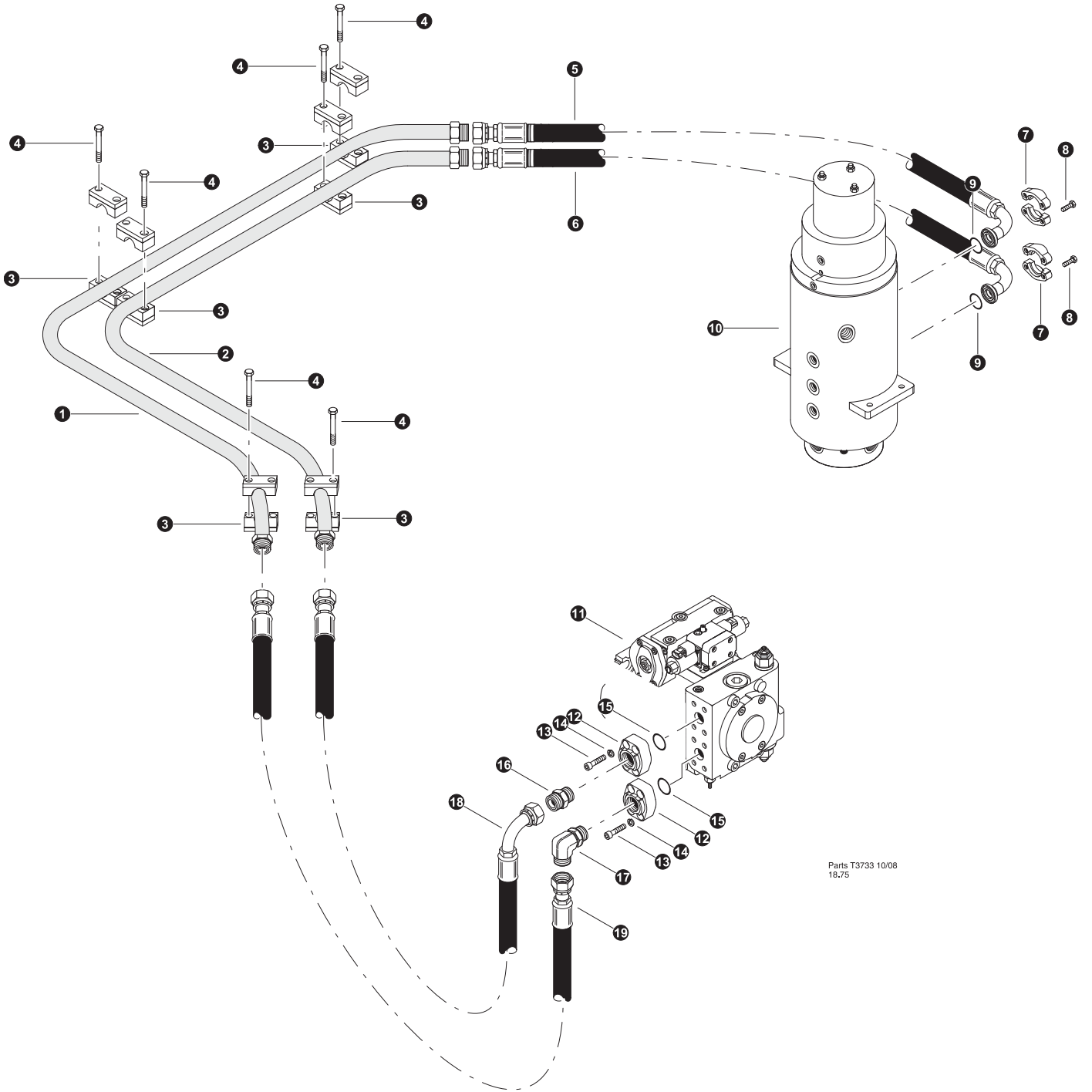
Parts T3731 10/08
18.75

TRACK DRIVE SYSTEM

Case Drain Hose

REF	PART #	QTY	DESCRIPTION	SEE SECTION
1	REF.	1	 HYDRAULIC TANK ASSEMBLY.....	UP-2
2	17688-DH	2	ELBOW, 90 - FF1868T-1212S	
3	-DH	1	HOSE ASSEMBLY - 2021 12-12OS-12OS Pump Case to Hydraulic Tank	
4	-DH	1	HOSE ASSEMBLY - 2042 12-12OS-12O9 Pump Case to Hydraulic Tank	
5	19127-DH	1	ELBOW, 45 - FF2068T-1212S	
6	15152-DH	1	CONNECTOR, STR - FF1852T-1212S	
7	REF.	1	 TRACK DRIVE PUMP	DH-4

 See referenced page for component or assembly breakdown.



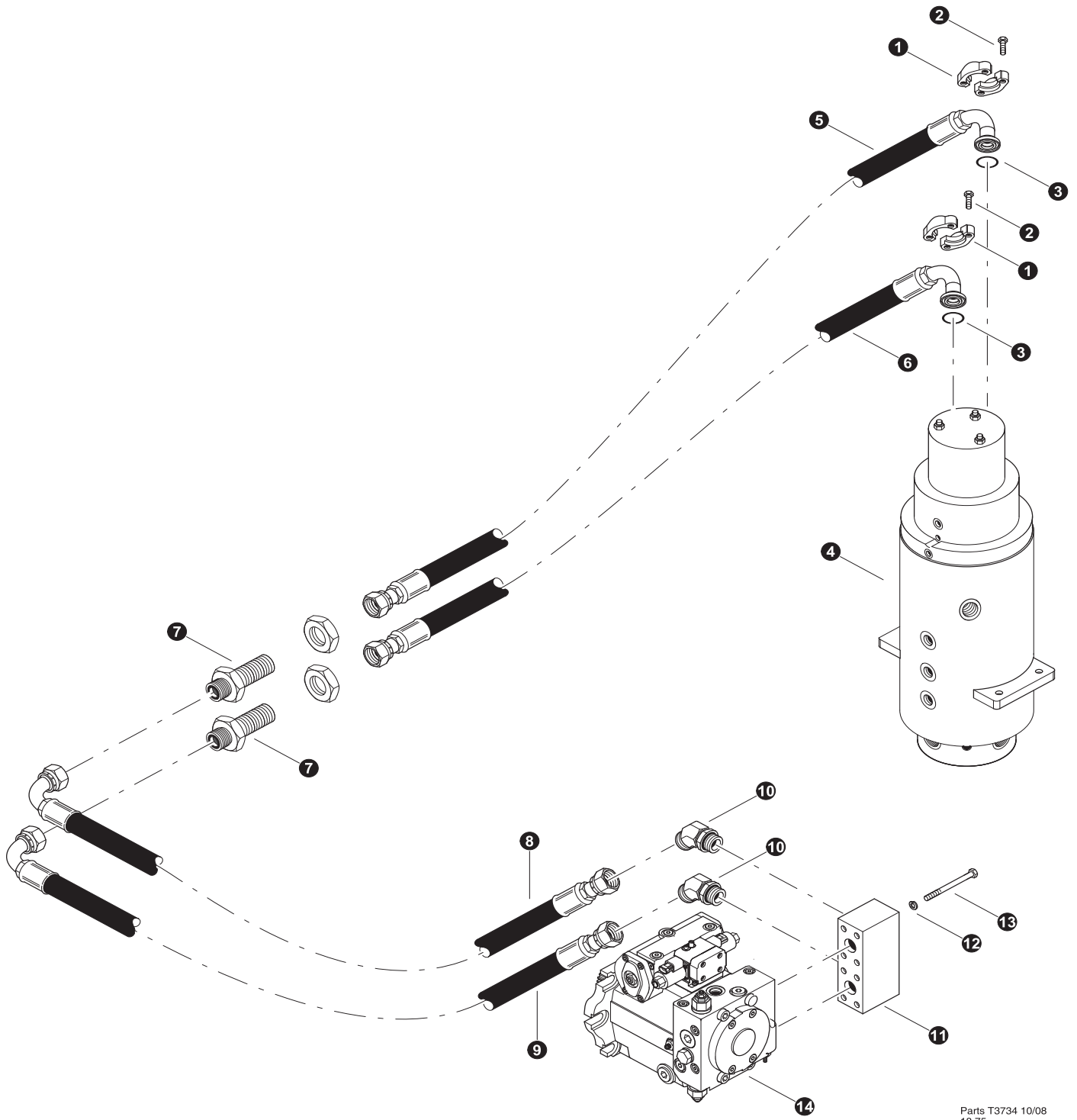
Parts T3733 10/08
18,75

TRACK DRIVE SYSTEM

Left Drive Pump Pressure Connections

REF	PART #	QTY	DESCRIPTION	SEE SECTION
1	52601-DH	1	TUBELINE, TRACK DRIVE - LH PUMP / TOP	
2	52602-DH	1	TUBELINE, TRACK DRIVE - LH PUMP / BOTTOM	
3	52372-DH	6	<input type="checkbox"/> CLAMP, STEEL TUBELINES (TRACK DRIVE)	
4	16365-DH	12	BOLT - .375" X 2.75"	
5	-DH	1	HOSE ASSEMBLY - 6022.5 16-16OS-16PH9 Outside to RM 11	
6	-DH	1	HOSE ASSEMBLY - 6020 16-16OS-16PH9 Inside to RM 9	
7	15113-DH	2	KIT, SPLIT FLANGE - 1" (CODE 62)	
8	15551-DH	8	BOLT - 12MM-1.75P X 40MM	
9	15377-DH	2	O-RING - 1" SF (CODE 61/62)	
10	REF.	1	<input type="checkbox"/> ROTORY MANIFOLD	UP-1
11	REF.	1	<input type="checkbox"/> TRACK DRIVE PUMP	DH-4
12	18397-DH	2	<input type="checkbox"/> CONNECTOR, FLANGE PAD - W48-16-16U(C 62)	
13	-DH	8	BOLT,	
14	-DH	8	WASHER, lock	
15	-DH	2	O-RING - 1" SF (CODE 61/62)	
16	15225-DH	1	CONNECTOR, STR - FF1852T-1616S	
17	15228-DH	1	ELBOW, 90 - FF1868T-1616S	
18	-DH	1	HOSE ASSEMBLY - 6048 16-16OS-16O9 TRACK Drive Pump Top	
19	-DH	1	HOSE ASSEMBLY - 6044 16-16OS-16OS TRACK Drive Pump Bottom	



- See referenced page for component or assembly breakdown.
- Kit or Assembly - includes all items indented underneath.





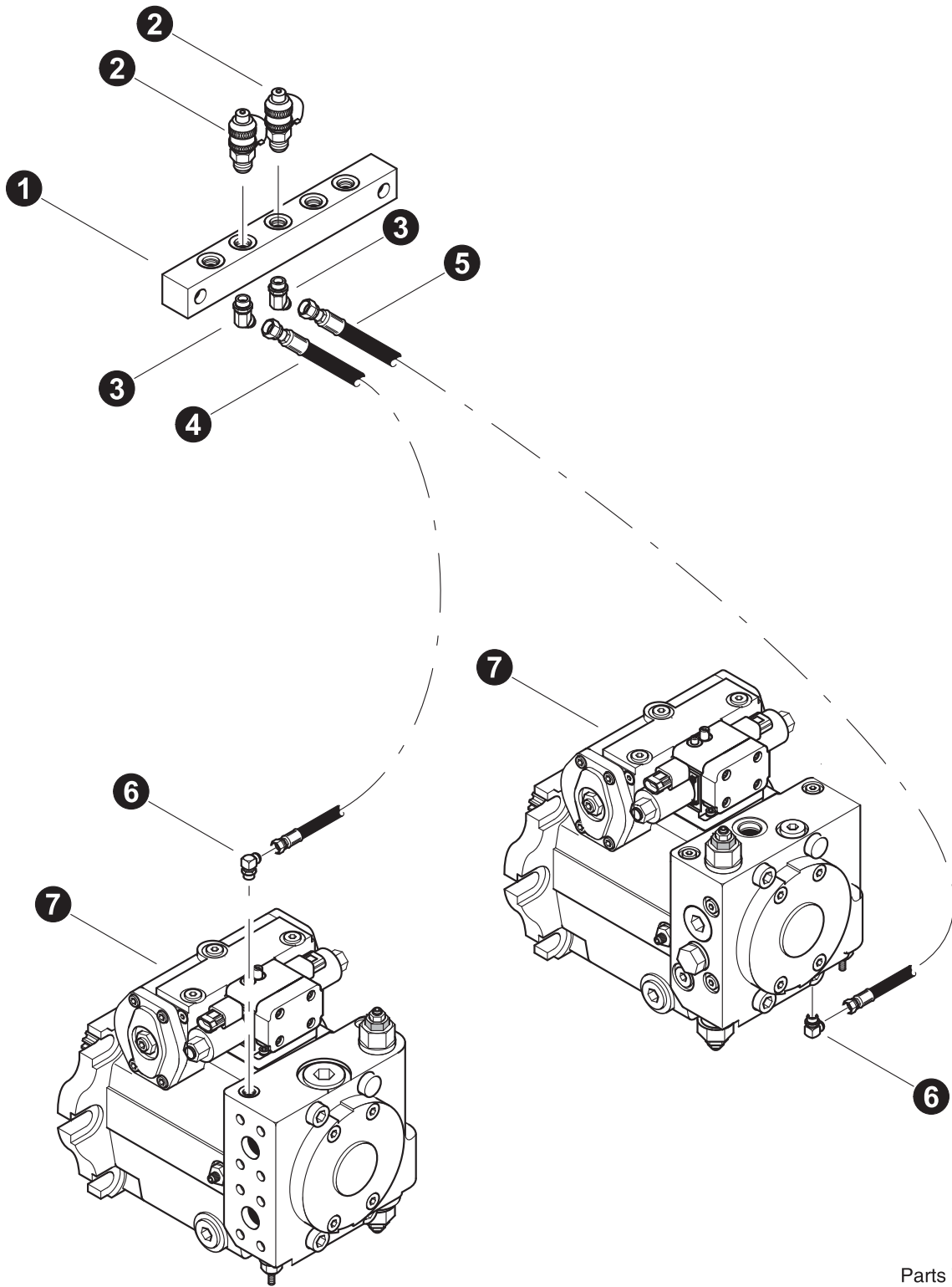
Parts T3734 10/08
18.75

TRACK DRIVE SYSTEM

Right Drive Pump Pressure Connections


REF	PART #	QTY	DESCRIPTION	SEE SECTION
1	15113-DH	2	KIT, SPLIT FLANGE - 1" (CODE 62)	
2	15551-DH	8	BOLT - 12MM-1.75P X 40MM	
3	15377-DH	2	O-RING - 1" SF (CODE 61/62)	
4	REF.	1	 ROTORY MANIFOLD	UP-1
5	-DH	1	HOSE ASSEMBLY - 6032 16-16OS-16PH9 Top to RM 11	
6	-DH	1	HOSE ASSEMBLY - 6031.5 16-16OS-16PH9 Bottom to RM 9	
7	20033-DH	2	CONNECTOR, STR BULKHEAD - 832-TT-16	
8	-DH	1	HOSE ASSEMBLY - 6044.5 16-16OS-16O9 TRACK Drive Pump Top	
9	-DH	1	HOSE ASSEMBLY - 6043 16-16OS-16O9 TRACK Drive Pump Bottom	
10	16460-DH	2	ELBOW, 45 - FF2068T-1616S	
11	53646-DH	1	MANIFOLD, TRACK DRIVE - HYDRO PUMP	
12	10796-DH	8	WASHER, LOCK - .4375"	
13	53717-DH	8	BOLT - .4375 X 6.5"	
14	REF.	1	 TRACK DRIVE PUMP	DH-4


-  See referenced page for component or assembly breakdown.
-  Kit or Assembly - includes all items indented underneath.



Parts T3732 10/08
18.75

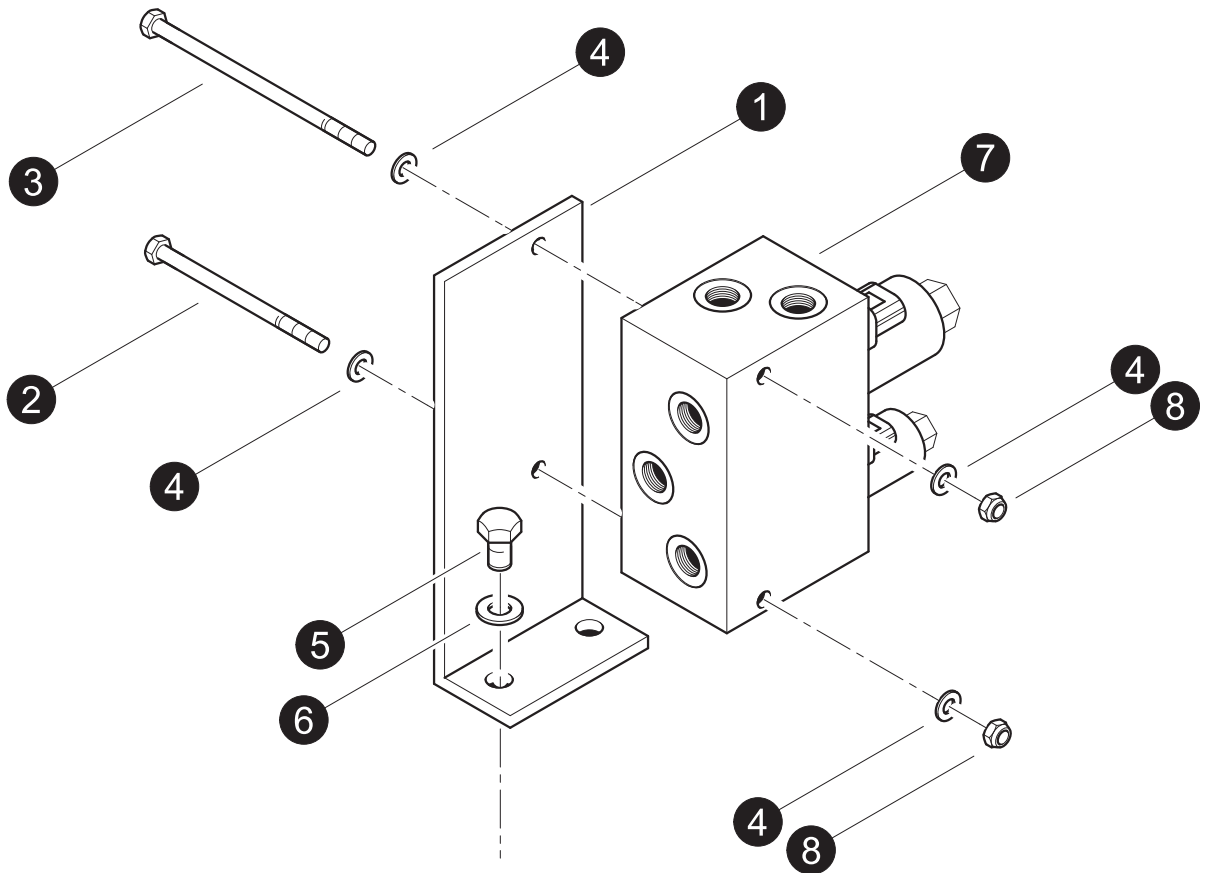
TRACK DRIVE PUMP GAUGE PORTS

REF	PART #	QTY	DESCRIPTION	SEE SECTION
1	16037-DH	1	TAP, gauge port (1/4" ORB)	
2	22287-DH	1	MANIFOLD, PRESSURE CHECK	
3	51884-DH	1	ELBOW, 45 - (4 V50X-S)	
4	-DH	1	HOSE ASSEMBLY - 2043-02-04JS-04JS (LEFT TRACK Drive Pump gauge port to pressure check manifold) Part of kit #53141	
5	-DH	1	HOSE ASSEMBLY - 2032-02-04JS-04JS (RIGHT TRACK Drive Pump gauge port to pressure check manifold) Part of kit #53141	
6	51889-DH	1	ELBOW, 90 - (4C50X-S)	
7	REF.	1	 TRACK Drive Pump	DH-4

 See referenced page for component or assembly breakdown.

Section DH-3

Drive Hydraulics - Motor Shift, Parking Brake, and Flushing



Parts T3750 11/08
25.00

**Motor Shift, Parking Brake, and Flushing Circuits
(Brake / Shift Manifold Mounting)**

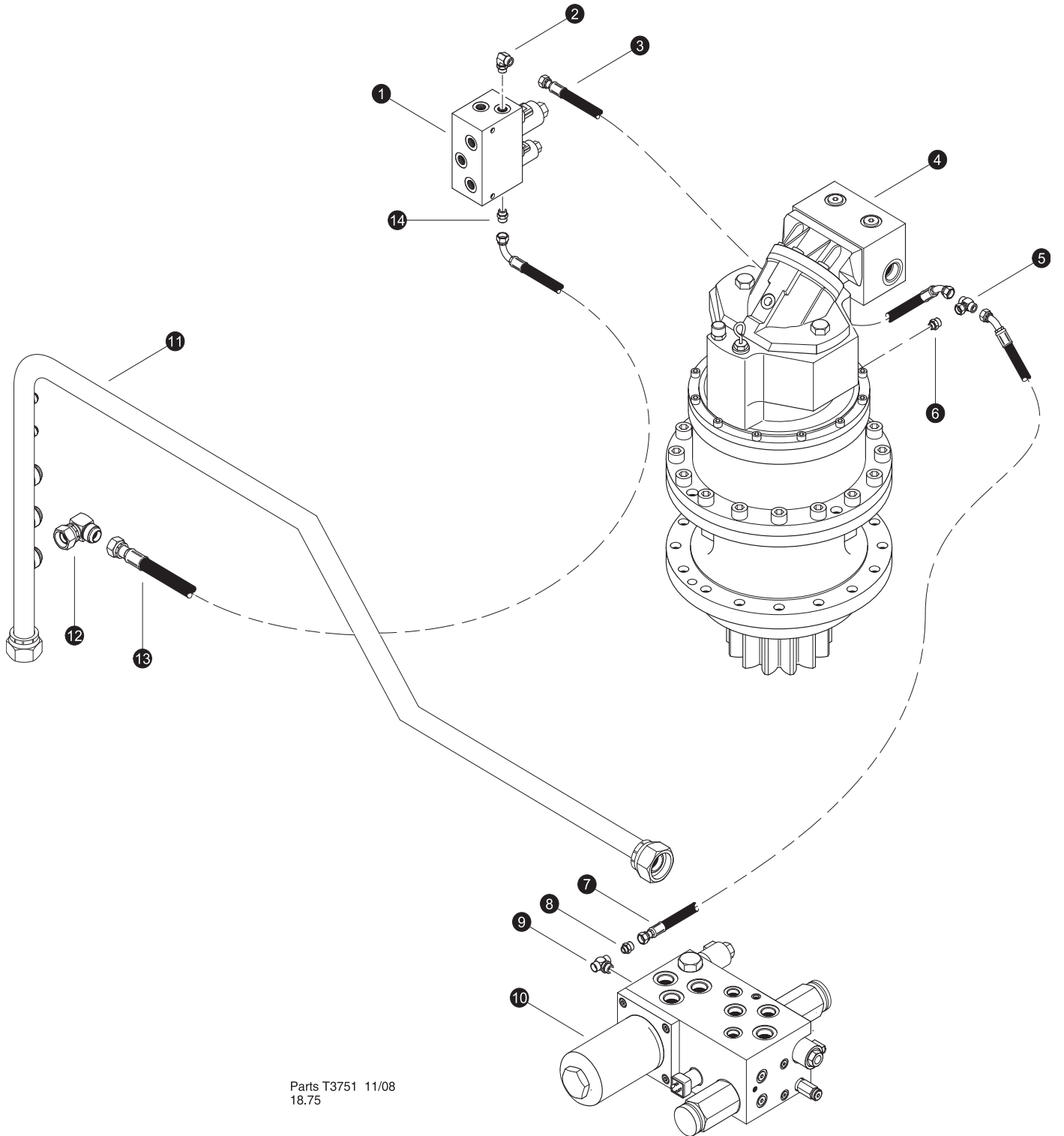
REF	PART #	QTY	DESCRIPTION	SEE SECTION
1	52546-DH	1	BRACKET, SAW STOP VALVE MOUNT T/M	
2	10818-DH	1	BOLT - .25" X 3"	
3	50076-DH	1	BOLT - .25" X 5"	
4	10757-DH	10	WASHER, SAE FLAT - .25"	
5	15542-DH	2	BOLT - .375" X .75"	
6	15528-DH	2	WASHER, SAE FLAT - .375"	
7	REF	1	MANIFOLD, BRAKE / SHIFT W/FLUSH TRACK.....	DH-3
8	10811-DH	2	NUT, LOCK - .25"	



See referenced page for component breakdown.




Kit or Assembly - includes all items indented underneath.





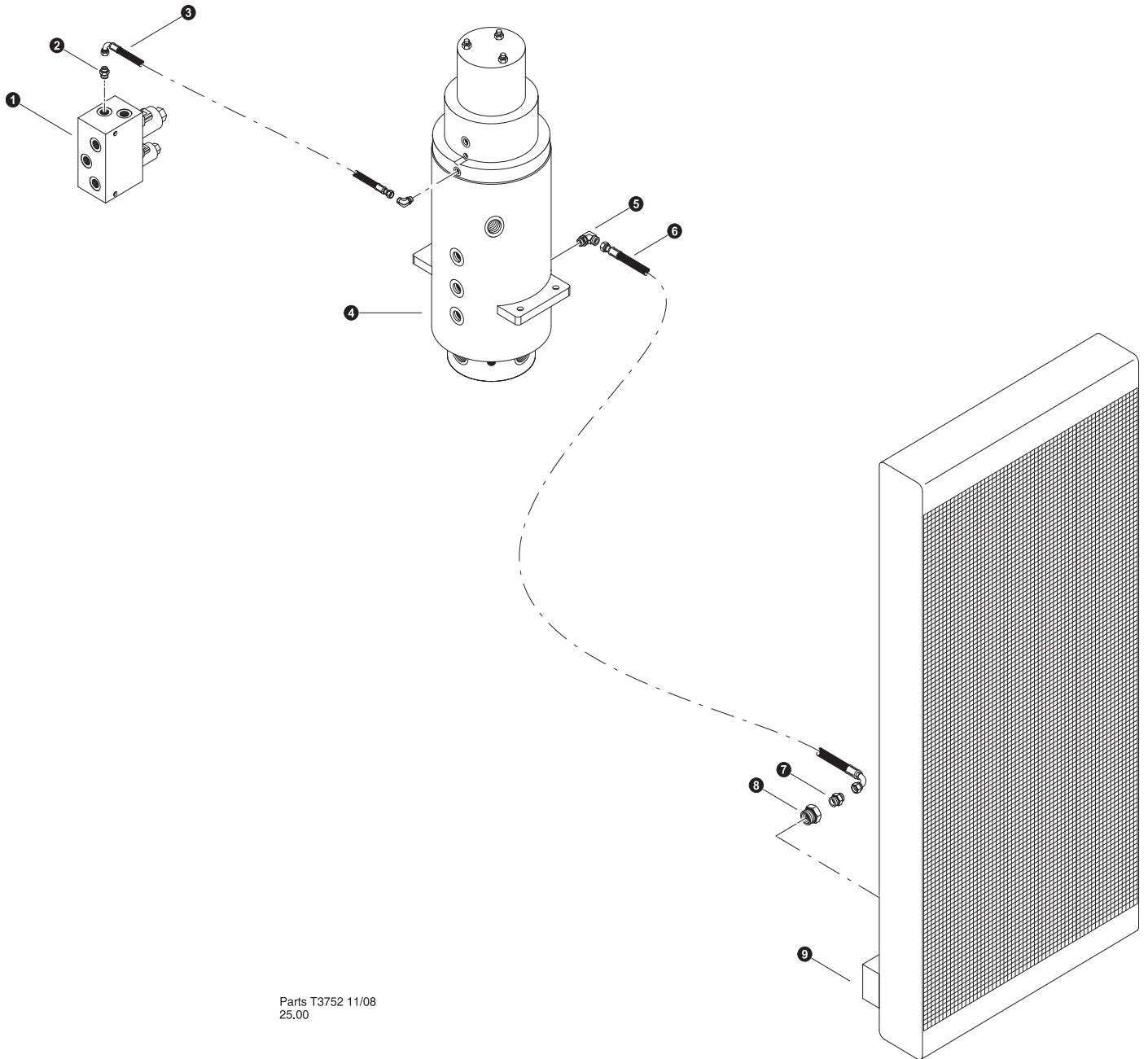
Parts T3751 11/08
18.75

Motor Shift, Parking Brake, and Flushing Circuits


(BRAKE / SHIFT MANIFOLD - PRESSURE AND TANK)

REF	PART #	QTY	DESCRIPTION	SEE SECTION
1	REF	1	MANIFOLD, BRAKE / SHIFT W/FLUSH TRACK.....	DH-3
2	16296-DH	1	ELBOW, 90 - FF1868T-0606S	
3	-DH	1	HOSE ASSEMBLY - 2034-06-06OS-06O4 (swing motor break release tee to Parking Brake / Motor Shift manifold P1)	
4	REF	1	SWING MOTOR ASSEMBLY.....	FH-3
5	52900-DH	1	SWIVEL, NUT BRANCH TEE #6	
6	53124-DH	1	FITTING, MALE CONNECTOR ISO 6149	
7	-DH	1	HOSE ASSEMBLY - 2068-06-06OS-06O4 (swing motor break release tee to Charge Manifold G1)	
8	16541-DH	1	CONNECTOR, STR - FF1852T-0404S	
9	24293-DH	1	TEE - 4-G5G5JAO-S	
10	REF.	1	 CHARGE VALVE / FILTER ASSEMBLY.....	DH-3
11	52450-DH	1	MANIFOLD, CASE DRAIN (3) #8 PORTS	
12	16360-DH	1	ELBOW, 90 - FF1868T-0808S	
13	-DH	1	HOSE ASSEMBLY - 2051-06-0609-08FJ (Parking Brake / Motor Shift manifold T1 to drain manifold tube)	

-  See referenced page for component breakdown.
-  Kit or Assembly - includes all items indented underneath.



Motor Shift, Parking Brake, and Flushing Circuits (MOTOR FLUSHING RETURN)

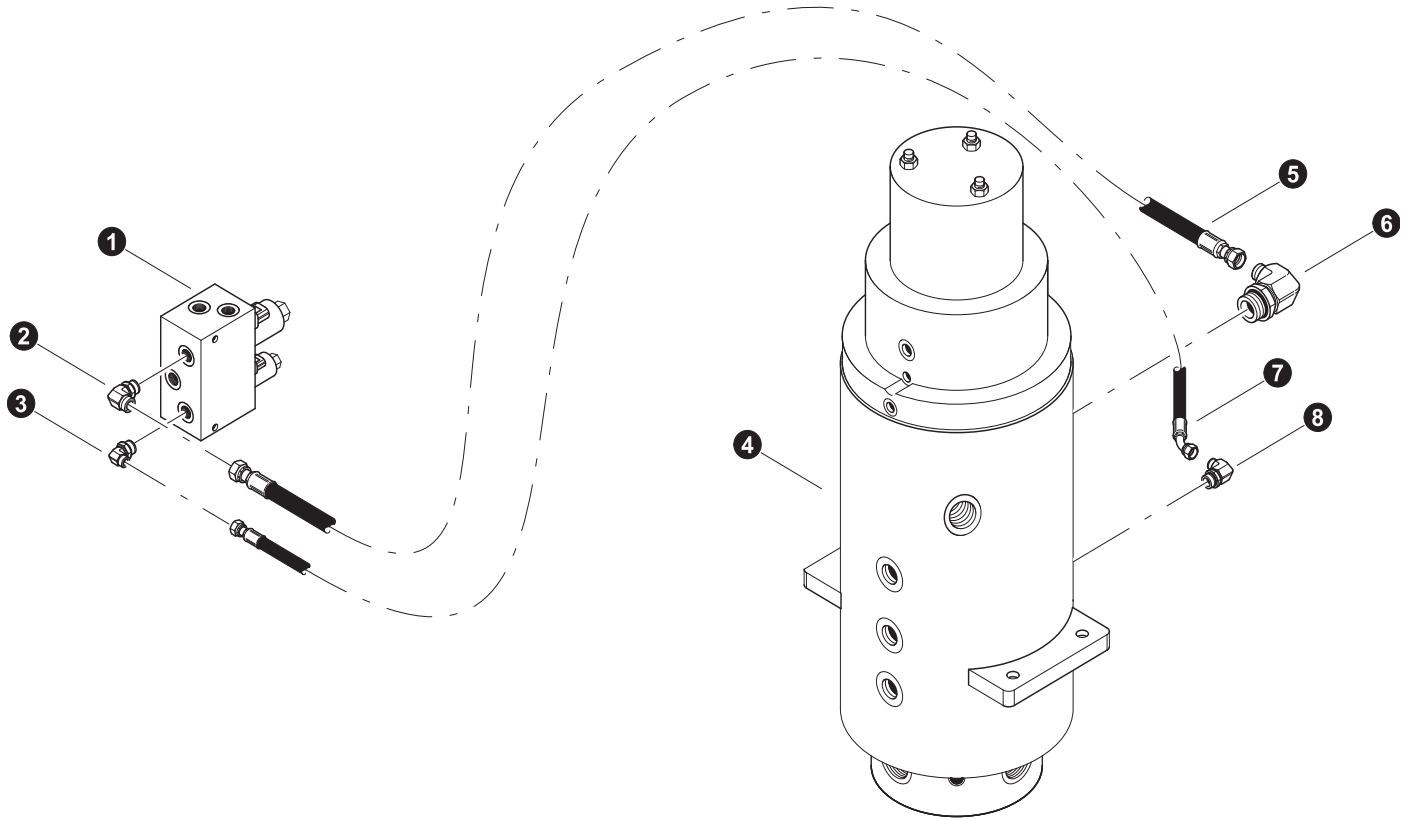
REF	PART #	QTY	DESCRIPTION	SEE SECTION
1	REF	1	MANIFOLD, BRAKE / SHIFT W/FLUSH TRACK.....	DH-3
2	15124-DH	1	CONNECTOR, STR - FF1852T-0406S	
3	-DH	1	HOSE ASSEMBLY - 2030-04-040S-0409 (Brake / Shift manifold tank port to rotary manifold drain port)	
4	16540-DH	1	ELBOW, 90 - FF1868T-0404S	
5	16296-DH	1	ELBOW, 90 - FF1868T-0606S	
6	-DH	1	HOSE ASSEMBLY - 2068-06-060S-0609 (Rotary manifold #1 to motor flushing return port on oil cooler)	
7	22902-HH	1	CONNECTOR, STR - 848-TT-08X06	
8	20067-HH	1	BUSHING, REDUCER - 6410-12-8	
9	REF.	1	 OIL COOLER	UP-3



See referenced page for component breakdown.



Kit or Assembly - includes all items indented underneath.



Parts T3753 11/08
25.00

Motor Shift, Parking Brake, and Flushing Circuits (Parking Brake and Motor Shift Connections)

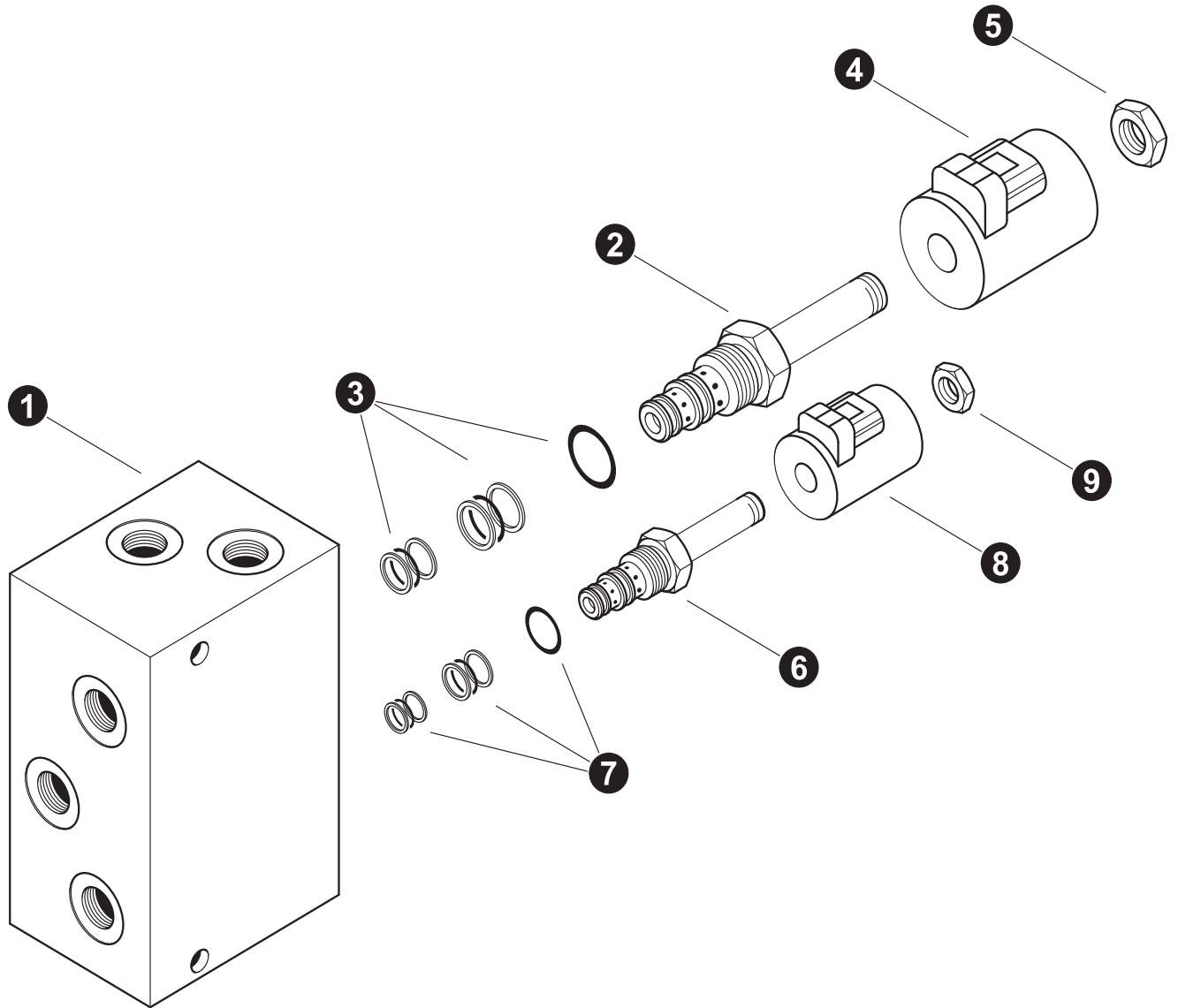
REF	PART #	QTY	DESCRIPTION	SEE SECTION
1	REF	1	MANIFOLD, BRAKE / SHIFT W/FLUSH TRACK.....	DH-3
2	16296-DH	1	ELBOW, 90 - FF1868T-0606S	
3	15133-DH	1	ELBOW, 90 - FF1868T-0406S	
4	REF	1	ROTARY MANIFOLD	UP-1
5	-DH	1	HOSE ASSEMBLY - 2027-06-060S-060S (Rotary manifold #7 to BR port on parking brake motor shift manifold)	
6	53604-DH	1	FITTING, ELBOW - 90DEG FF6801-06-12	
7	-DH	1	HOSE ASSEMBLY - 2068-06-060S-0609 (Rotary manifold #3 to MS port on parking brake motor shift manifold)	
8	15133-DH	1	ELBOW, 90 - FF1868T-0406S	



See referenced page for component breakdown.



Kit or Assembly - includes all items indented underneath.



Parts T3754 11/08
50

Motor Shift, Parking Brake, and Flushing Circuits

(Brake / Shift Manifold Breakdown)

REF	PART #	QTY	DESCRIPTION	SEE SECTION
1	52581-DH	1	MANIFOLD, BRAKE / SHIFT W/FLUSH TRACK	
2	53733-DH	1	VALVE, SOLENOID - Parking Brake - TM	
3	53735-DH	1	KIT, seal - parking brake solenoid (SK10-3X-MM)	
4	53736-DH	1	COIL, (4304124)	
5	-DH	1	NUT, (7004400)	
6	53734-DH	1	VALVE, SOLENOID - Motor Shift - TM	
7	52228-DH	1	KIT, seal - parking brake solenoid (SK08-3X-MM)	
8	53737-DH	1	COIL, (4304024)	
9	-DH	1	NUT, (7004400)	



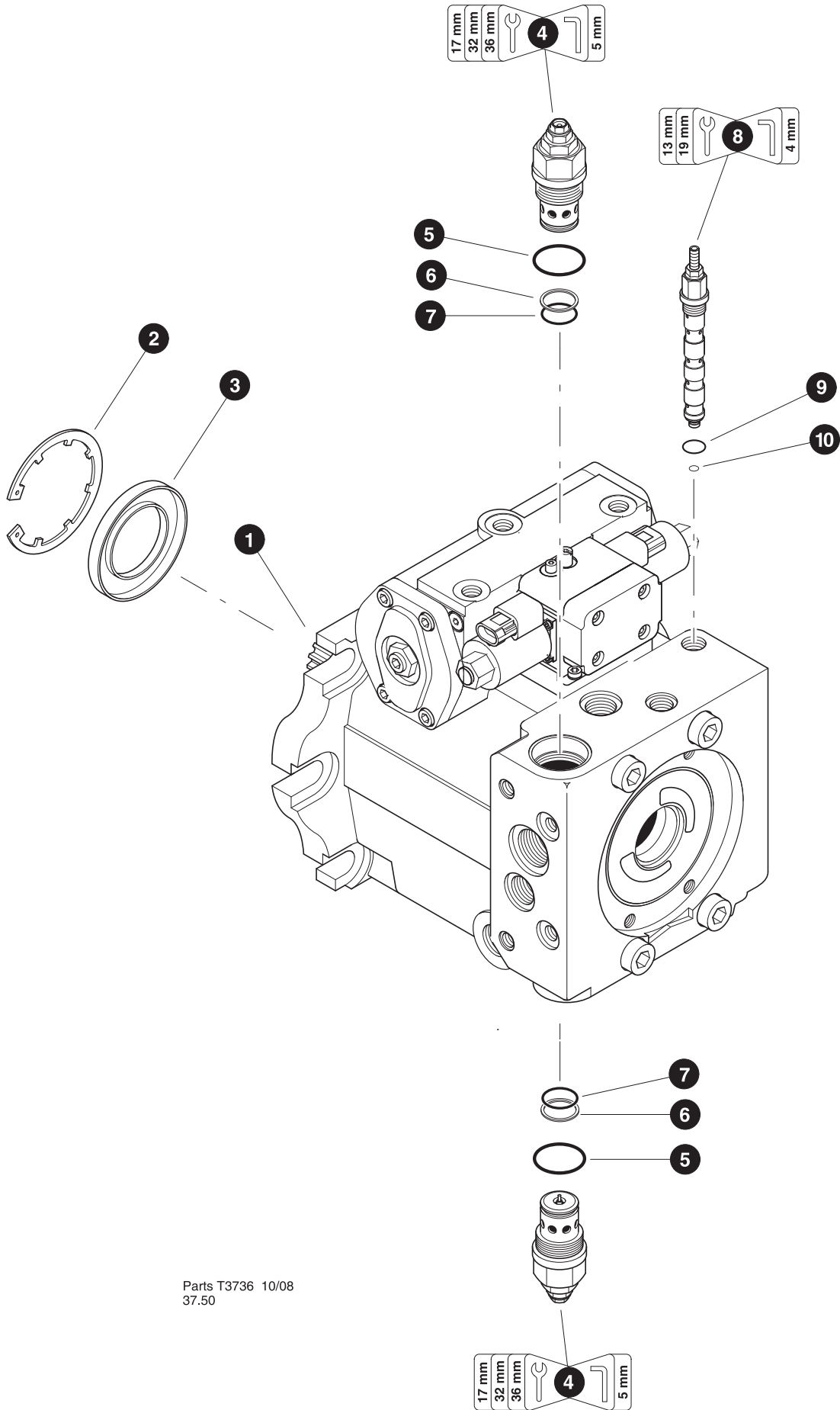
See referenced page for component breakdown.



Kit or Assembly - includes all items indented underneath.

Section DH-4

Drive Hydraulics - Drive System Components



TRACK DRIVE PUMP - AA4VG90 (Forward Cast Housing Components)

REF	PART #	QTY		DESCRIPTION	SEE SECTION
1	26623-DH	1	☐	PUMP, TRACK DRIVE (NON-Thru drive Left Hand)	
	52540-DH	1	☐	PUMP, TRACK DRIVE (Left Hand) - B/B Thru drive (for Disc Saw Pump)	
	52539-DH	1	☐	PUMP, TRACK DRIVE (Right Hand) W/BB THRU (for Charge Pump)	
2	53726-DH	1		RING, seal retaining (R902600001)	
3	53727-DH	1	⌘	SEAL, shaft (R909830978)	
4	53724-DH	2	☐	CARTRIDGE, high pressure relief valve R902602249	
5	-DH	1	⌘	O-RING, HPRV cartridge (Body)	
6	-DH	1	⌘	RING, back-up - HPRV cartridge (Chamber)	
7	-DH	1	⌘	O-RING, HPRV cartridge (Chamber)	
8	53725-DH	1	☐	CARTRIDGE, POR relief valve R909437084	
9	-DH	1	⌘	O-RING, POR relief valve cartridge (Body)	
10	-DH	1	⌘	O-RING, POR relief valve cartridge (Chamber)	
-	53640-DH	1		KIT, SEAL REPAIR -TRACK DRIVE PUMP-VTG90	

Note:

Due to warranty policy restrictions imposed by TimberPro's component suppliers, it is not recommended that the component be disassembled further than is shown in the illustration.



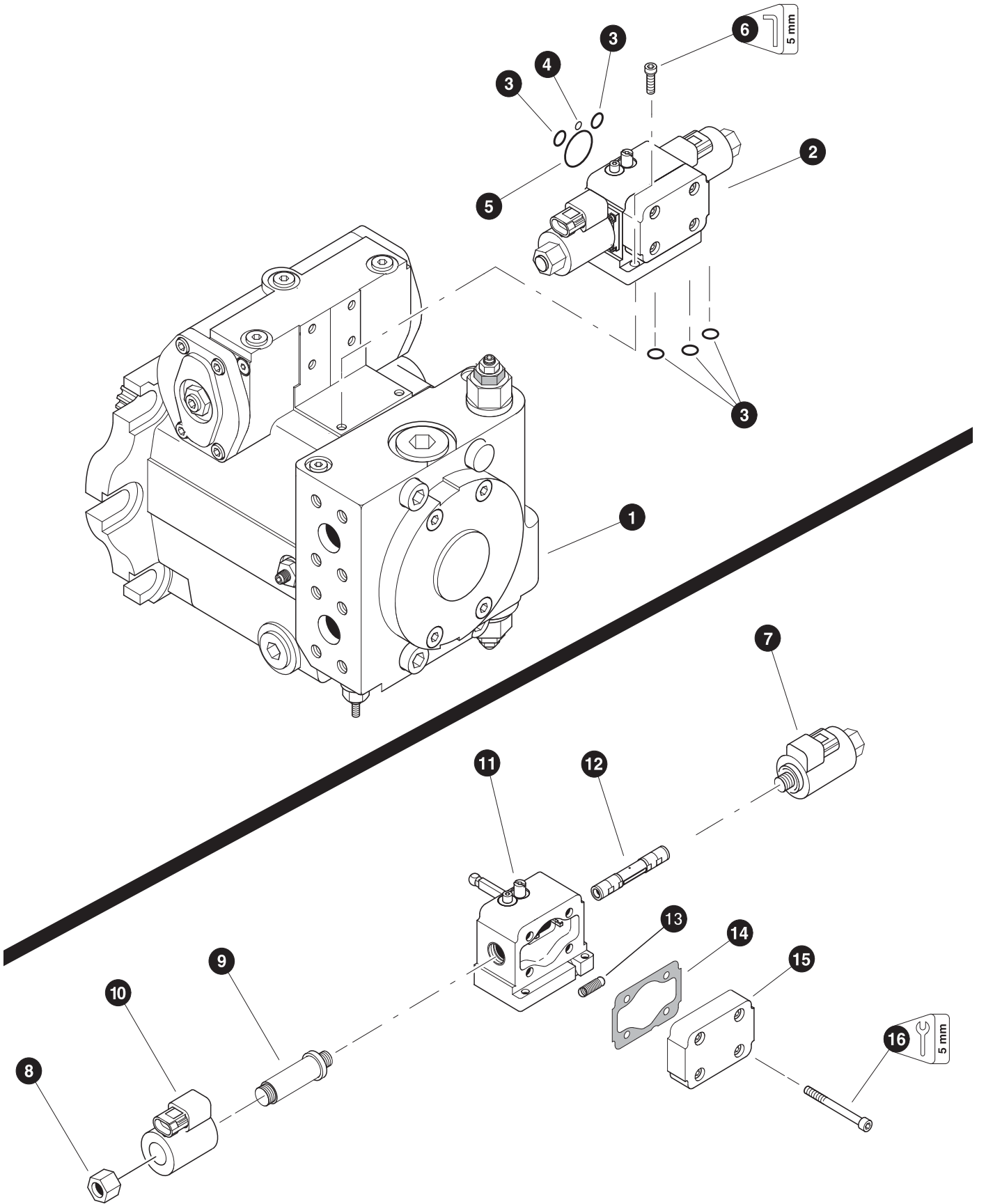
See referenced page for component breakdown.









Kit or Assembly - includes all items indented underneath.



Included in seal repair kit Part # 53640-WD






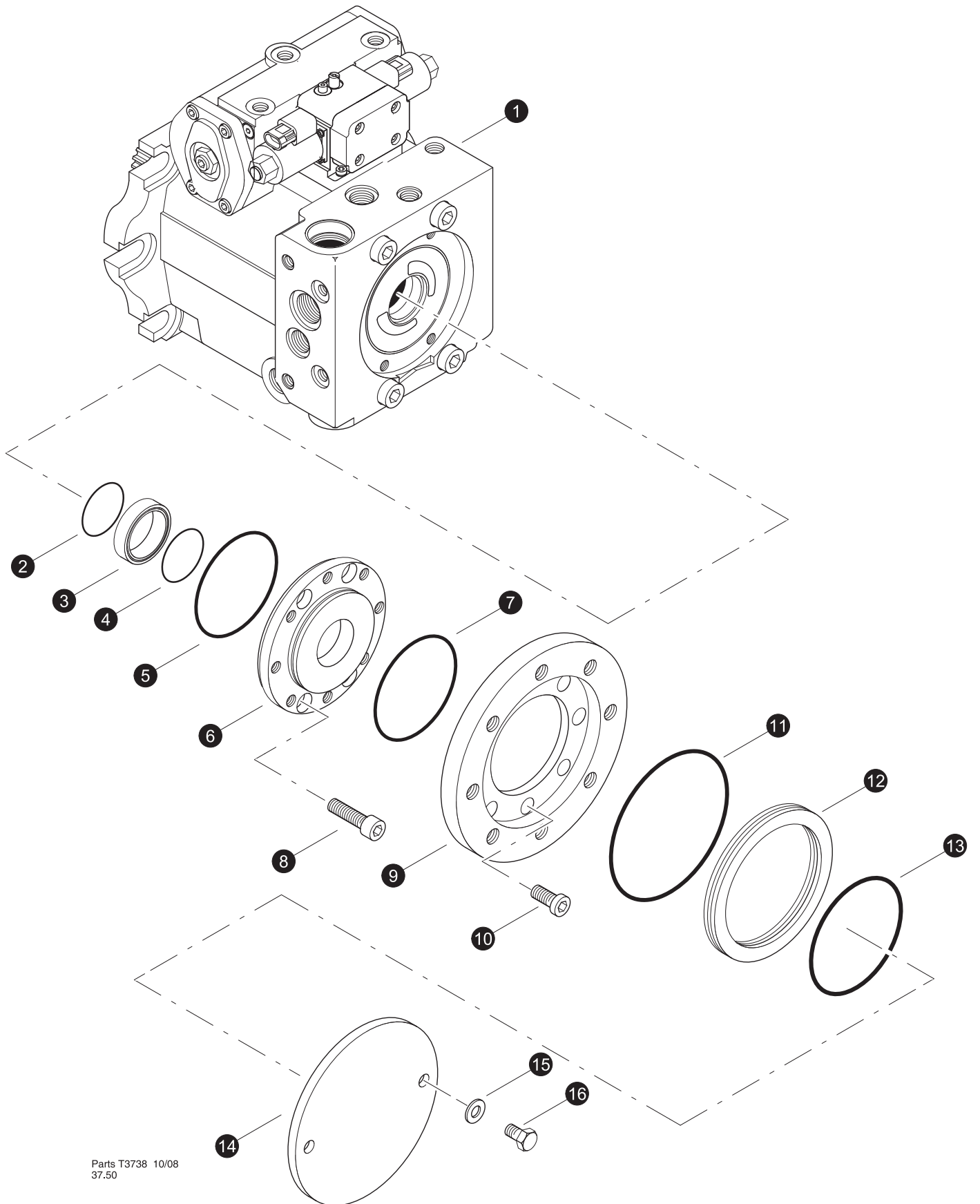
**TRACK DRIVE PUMP - AA4VG90
(Stroke Control Assembly)**

REF	PART #	QTY		DESCRIPTION	SEE SECTION
1	REF.	1		TRACK DRIVE PUMP -	DH-4-1
2	53729-DH	1		VALVE, STROKE CONTROL - AA4VG90 24V	
3	-DH	5		O-RING, stroke control	
4	-DH	1		O-RING, stroke control	
5	-DH	1		O-RING, stroke control	
6	-DH	2		BOLT, allen head - 6mm x 20mm	
7	53730-DH	2		SOLENOID, CONTROL Assembly - AA4VG90	
8	-DH	2		NUT, coil stem	
9	-DH	2		COIL STEM	
10	-DH	2		COIL, solenoid - 24V	
11	-DH	1		CONTROL MODULE - AA4VG90 24V (R902106746)	
12	-DH	1		CONTROL PISTON (R902107090)	
13	-DH	1		SPRING, stroke centering (R902068150)	
14	-DH	1		GASKET, (R902066611)	
15	-DH	1		COVER, (R902107492)	
16	-DH	4		BOLT, allen head - 6mm (R909085831)	
-	53640-DH	1		KIT, SEAL REPAIR -TRACK DRIVE PUMP-VTG90	

Note:








Due to warranty policy restrictions imposed by TimberPro's component suppliers, it is not recommended that the component be disassembled further than is shown in the illustration.

-  See referenced page for component breakdown.
-  Kit or Assembly - includes all items indented underneath.
-  Included in seal repair kit Part # 53640-WD



Parts T3738 10/08
37.50




TRACK DRIVE PUMP - AA4VG90 (Thru Drive Components)

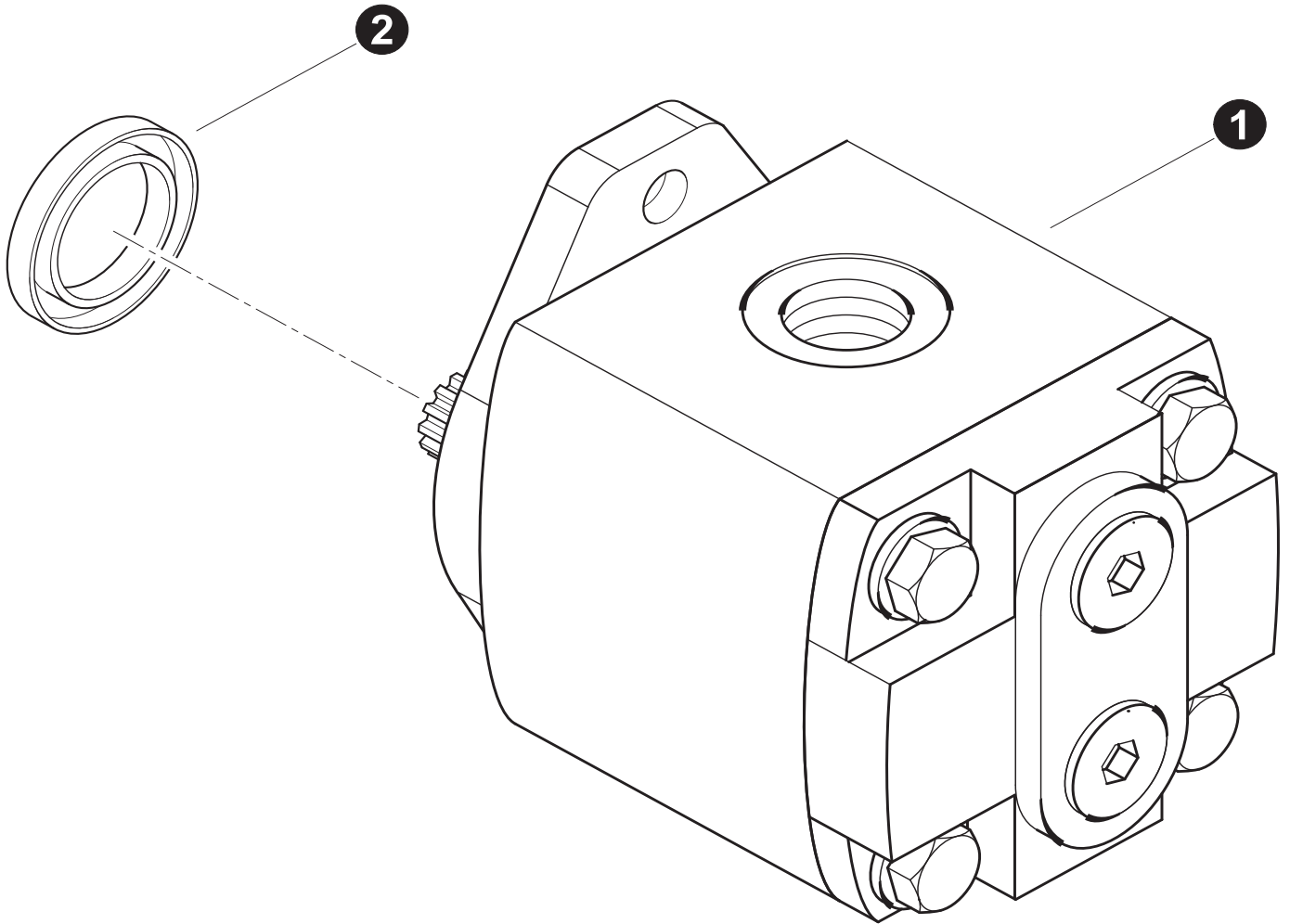
REF	PART #	QTY		DESCRIPTION	SEE SECTION
1	REF.	1		TRACK DRIVE PUMP -	DH-4-1
2	R909084484	1		O-Ring	
3	R9094430651	1		SEAL RING	
4	R909084484	1		O-Ring	
5	R909086679	1		O-Ring	
6	R902077958	1		COVER, Pump AA4VG90	
7	R909085360	1		O-Ring	
8	R909083060	4		Bolt,	
9	R909444589	1		FLANGE, Intermediate	
10	R909083189	6		Bolt	
11	R909085363	1		O-Ring	
12	R909431554	1		RING, Centering	
13	R909154589	1		O-Ring	
14	18414-DH	1		COVER, THRU DRIVE - REXROTH	
15	18040-DH	2		WASHER, flat - .5"	
16	10783-DH	2		BOLT - .5" X 1"	
-	53640-DH	1		KIT, SEAL REPAIR -TRACK DRIVE PUMP-VTG90	

R909830978

Note:

Due to warranty policy restrictions imposed by TimberPro's component suppliers, it is not recommended that the component be disassembled further than is shown in the illustration.

-  See referenced page for component breakdown.
-  Kit or Assembly - includes all items indented underneath.
-  Included in seal repair kit Part # 53640-WD

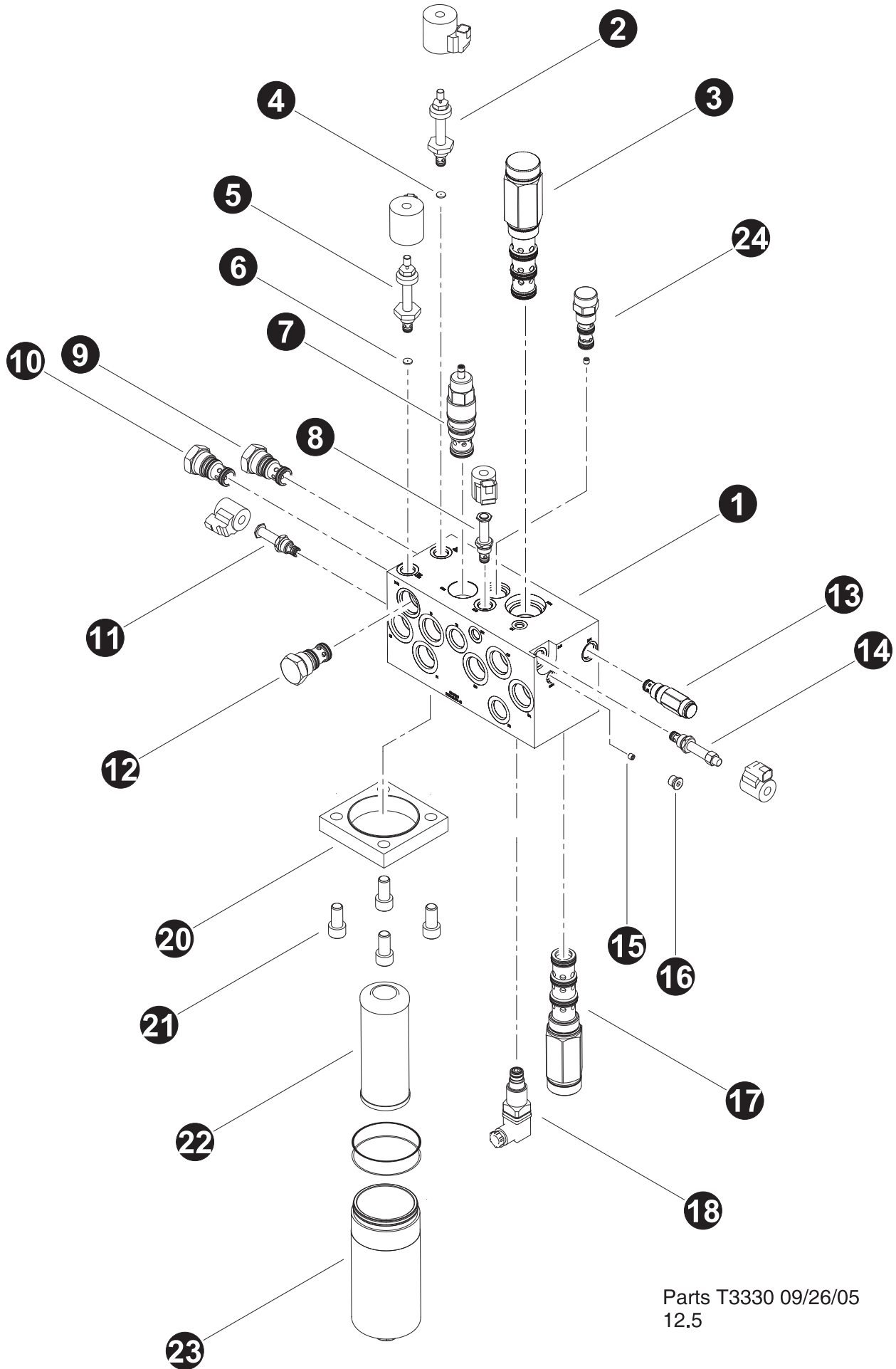


Parts T3739 10/08
50.00

Charge Pump Breakdown

REF	PART #	QTY		DESCRIPTION	SEE SECTION
1	52566-DH	1	<input type="checkbox"/>	PUMP, CHARGE TRACK MACHINE	
2	-DH	1		SEAL, shaft (R98640012P)	

- Kit or Assembly - includes all items indented underneath.



Parts T3330 09/26/05
12.5

Fan / Charge System Control Valve Breakdown

(Used on Serial Number 0129 and Up)

REF	PART #	QTY		DESCRIPTION	SEE SECTION
-	52099-DH	1	<input type="checkbox"/>	VALVE, FAN / CHARGE SYSTEM CONTROL	
1	-DH	1		MANIFOLD, fan / charge	
2	52092-DH	1		CARTRIDGE, HYDRAFORCE - TS38-20BM-0-N-24ER-VCO8-2 (Rad Fans)	
-	-DH	1		COIL, 24 V (4303724) NUT (4540560)	
-	52225-DH	1		KIT, SEAL (SKO8-2X-B)	
3	52134-DH	1	<input type="checkbox"/>	CARTRIDGE, HYDRAFORCE - PD42-M40N-0-N-160-VC42-M4	
-	52226-DH	1		KIT, SEAL (SK42-4X-MMM)	
4	-DH	1		ORIFACE	
5	52092-DH	1	<input type="checkbox"/>	CARTRIDGE, HYDRAFORCE - TS38-20BM-0-N-24ER-VCO8-2 (Oil Fans)	
-	-DH	1		COIL, 24 V (4303724) - NUT (4540560)	
-	52225-DH	1		KIT, SEAL (SKO8-2X-B)	
6	-DH	1		ORIFACE	
7	52223-DH	1	<input type="checkbox"/>	CARTRIDGE, SUN HYDRAULICS - SCGA-LDNT-17A (Charge Relief)	
-	52227-DH	1		KIT, SEAL (990-017-006)	
8	52222-DH	1	<input type="checkbox"/>	CARTRIDGE, HYDRAFORCE - SV08-20-0-N-24ER (Charge Heater)	
-	-DH	1		COIL, 24 V (4303624) NUT (7004400)	
-	52228-DH	1		KIT, SEAL (SKO8-3X-MM)	
9	52220-DH	1	<input type="checkbox"/>	CARTRIDGE, HYDRAFORCE - EV16-S34-0-N-70-VC16-S3	
-	52229-DH	1		KIT, SEAL (SK16-3X-MM)	
10	52220-DH	1	<input type="checkbox"/>	CARTRIDGE, HYDRAFORCE - EV16-S34-0-N-70-VC16-S3	
-	52229-DH	1		KIT, SEAL (SK16-3X-MM)	
11	52221-DH	1	<input type="checkbox"/>	CARTRIDGE, HYDRAFORCE - SV08-21-VCO8-2 (Charge Heater)	
-	-DH	1		COIL, 24 V (4303624) NUT (7004410)	
-	-DH	1		KIT, SEAL (SKO8-2X-T)	
12	52220-DH	1	<input type="checkbox"/>	CARTRIDGE, HYDRAFORCE - EV16-S34-0-N-0-70-VC16-S3	
-	52229-DH	1		KIT, SEAL (SK16-3X-MM)	
13	21673-DH	1	<input type="checkbox"/>	CARTRIDGE, relief valve (RV10)	
-	-DH	1		KIT, SEAL (SK10-2X-MM)	
14	52091-D	1	<input type="checkbox"/>	CARTRIDGE, HYDRAFORCE - SVO8-30M-0-P-24ER-VCO8-3 (Fans Rev)	
-	-DH	1		COIL, 24 V (4303624) NUT (7004400)	
-	52228-DH	1		KIT, SEAL (SKO8-3X-MM)	
15	-DH	1		ORIFACE	
16	-DH	1		PLUG	
17	52134-DH	1	<input type="checkbox"/>	CARTRIDGE, HYDRAFORCE - PD42-M40N-0-N-160-VC42-M4	
-	52226-DH	1		KIT, SEAL (SK42-4X-MMM)	
18	17675-DH	1		SWITCH, filter indicator	
20	-DH	1		FLANGE, Filter canister	
21	-DH	4		BOLT, ALLEN -	
22	19861-DH	1		ELEMENT, hydrostatic charge filter	
23	19864-DH	1	<input type="checkbox"/>	CANISTER	
-	19863-DH	1		O-RING, canister	
-	19862-DH	1		RING, back-up - canister	
24	-DH	1	<input type="checkbox"/>	CARTRIDGE, HYDRAFORCE - EP12-S35-0-N-90-VC12-S3	
-	52230-DH	1		KIT, SEAL (SK12-3X-MM)	

