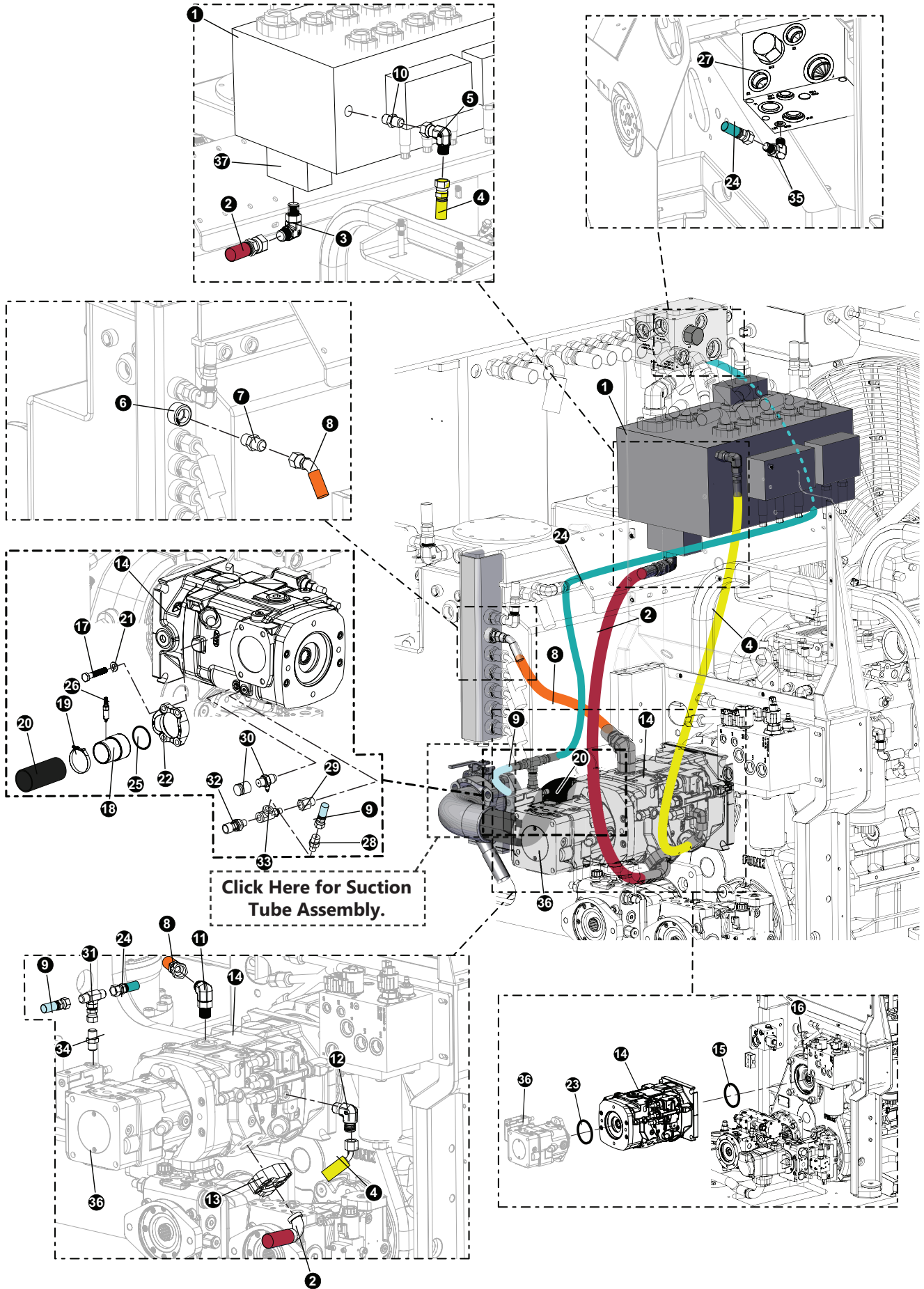


SECTION FH-1

FELLER BUNCHER HYDRAULICS ASSEMBLY AND INSTALLATION



FELLER BUNCHER HYDRAULICS ASSEMBLY, AND INSTALLATION

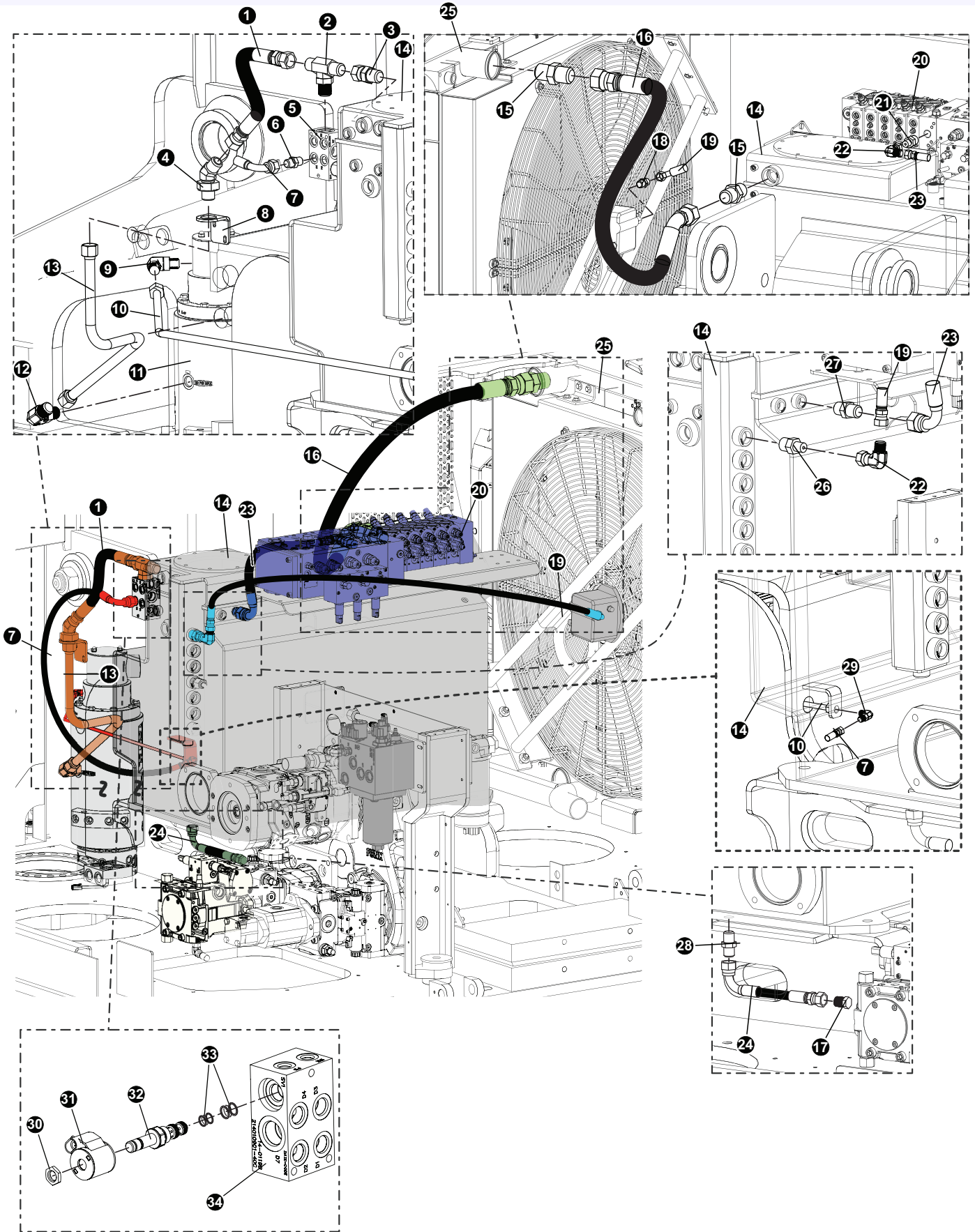
IMPLEMENT PUMP HYDRAULICS PARTS AND ASSEMBLY

REF	PART #	QTY	DESCRIPTION	SEE SECTION
1	58154	1	VALVE, MAIN - REX DISC / LEVELING	
2	(See Description)	1	PRESSURE, IMPLEMENT HOSE PART # 787TC72 20-20OS-20PH9-SW	
3	17055	1	ELBOW, 90 - FF1868T-2020S	
4	(See Description)	1	Hose, Valve LS, Hose Part # 787TC75 06-06OS-0604-W	
5	20035	1	ELBOW, 90 SWIVEL - 6 C6LO-S	
6	(Click Here)	1	TANK, HYDRAULIC - 775	UP-2
7	18406	1	CONNECTOR, STR - FF1852T-1612S	
8	(See Description)	1	CASE IMPLEMENT HOSE ASSEMBLY, HOSE PART #: 187TC46 16-16OS-16O4	
9	(See Description)	1	Hose, Disc Saw Load Sense Jumper Hose Part # 787TC14 04-04OS-04OS-W	
10	18034	1	CONNECTOR, STR - FF1852T-0606S	
11	15228	2	ELBOW, 90 - FF1868T-1616S	
12	16296	1	ELBOW, 90 - FF1868T-0606S	
13	15114	1	KIT, SPLIT FLANGE - 1.25" (CODE 62)	
14	57865	1	PUMP, IMPLEMENT - REX 175CC/40 W/HP CONT	
15	15442-2	1	O-RING, PUMP DRIVE PILOT	
16	(Click Here)	1	TRANSMISSION, TRIPLE PUMP DRIVE.....	T-EE
17	(see description)	4	BOLT - 5/8" x 1 3/4" (Lawson PN #A697)	
18	60835	1	TUBE, SUCTION - 175CC TAILSWING ONLY	
19	15613	1	CLAMP, STRAP BAND - 3.5"	
20	(See Description)	1	HOSE ASSEMBLY, HOSE PART #: 7216-300248 26-0-0	
21	10771	1	WASHER, SAE FLAT - .625"	
22	58139	1	FLANGE, 13001H-5656K 175CC PUMP 57865	
23	58256	1	O-RING, THRU-DRIVE SERIES 40 (145/175)	
24	(See Description)	1	Hose, Disc Saw Load Sense Hose Part # 787TC120 04-04OS-04OS-W	
25	58992	1	O-RING, 175CC SUCTION ELBOW	
26	55615	1	FITTING, ADAPTOR - BLEED - SUCTION TUBE	
27	(Click Here)	1	MANIFOLD, OIL COOLER CONTROL - D SERIES.....	UP-2
28	55214	1	CONNECTOR, STR - 848-TTO-04X04 (W/.031)	
29	16294	1	BUSHING, REDUCER - 6410-6-4	
30	57820	2	TAP, GAUGE PORT # 6 SAE - Oring Boss	
31	23541	1	TEE - 4 S6LO-S	
32	24532	1	TRANSDUCER, DISC SAW Pressure	
33	52186	1	TEE, RUN - MALE (4 AOG5J5-S)	
34	15124	1	CONNECTOR, STR - FF1852T-0406S	
35	16540	1	ELBOW, 90 - FF1868T-0404S	
36	(Click Here)	1	PUMP, DISC SAW - HIGH PRESSURE (60CC).....	EE-4
37	17016	1	CONNECTOR, FLANGE PAD - 1.25 C62	

See referenced page for component or assembly breakdown.

Bulk material - order length required in feet or meters.

Kit or Assembly - includes all items indented underneath.



FELLER BUNCHER HYDRAULICS ASSEMBLY, AND INSTALLATION

HYDRAULICS PARTS AND ASSEMBLY

REF	PART #	QTY	DESCRIPTION	SEE SECTION
1	57941 (Kit #)	1	HOSE ASSEMBLY - P# 187TC22.5 16-16JS-16JS (Swing Brake Manifold to BH - Swing BR CD)	
2	55622	1	TEE, BRANCH - STRAIGHT THREAD #16	
3	11352	1	CONNECTOR, STR SWIVEL - 1404-16-16	
4	54806	1	45* Bulkhead Union Elbow -16 JIC	
5	55259 (Assm.)	1	Swing Brake Manifold (See Below for Breakdown)	
6	53103	1	FITTING, 6-8 - ORB-JIC 830-B	
7	57941 (Kit #)	1	HOSE ASSEMBLY - P# 387TC41 06 06JS 06J9 (Swing BR Mfld to BH)	
8	47291	1	BRACKET, BH 16 JIC	
9	15479	1	ELBOW, 90 - 6801-6-4	
10	57277	1	TUBELINE, SD TO SEAL DRAIN BULKHEAD to RMV	
11	(Click Here)	1	Rotary Manifold	UP--1-18
12	11306	1	ELBOW, 90 12 C5OX-S to RMV2	
13	57278	1	TUBELINE, RM V2 TO V2 BULKHEAD	
14	(Click Here)	1	Hydraulic Tank.....	UP-2-1
15	22448	1	CONNECTOR, STR - 848-TTO-24X24	
16	57941 (Kit #)	1	HOSE ASSEMBLY - P# 187TC40 24 24OS-24O4 (Radiator to Hydraulic Tank)	
17	16033	1	PLUG - FF9767-12S	
18	18034	1	CONNECTOR, STR - FF1852T-0606S	
19	57941 (Kit #)	1	HOSE ASSEMBLY - P# 387TC73 06 06OS 06O9 (Hydraulic Tank to Radiator)	
20	(Click Here)	1	Main Control Valve	FH-1-2
21 (No Replacement Part)		1	(Contact Rexroth for Replacement Fitting)	
22	20035	1	ELBOW, 90 SWIVEL - 6 C6LO-S	
23	57941 (Kit #)	1	HOSE ASSEMBLY - P# 187TC28 08 08OS 08O9 (Main Control Valve to Hydraulic Tank)	
24	57941 (Kit #)	1	HOSE ASSEMBLY - P# 187TC10 12 12OS 12O9 (Hydraulic EOL)	
25	(Click Here)	1	Radiator	UP-3
26	57620	1	FITTING, STR 6-12 F5OLO-S	
27	22901	1	CONNECTOR, STR - 6-8 F5OLO-S	
28	15201	1	CONNECTOR, STR - FF2031T-1212S	
29	55347	1	FITTING, ELBOW - BULKHEAD 6 WETX-WLN-S	
30	(See Desc.)	1	NUT, (P# 7004400)	
31	53992	1	COIL, (P# 4303724)	
32	53734	1	VALVE, SOLENOID - Parking Brake - (TM P# SV08-31-0-N-24ERZ)	
33	53735	1	KIT, seal - parking brake solenoid (SK10-3X-MM)	
34	55259	1	MANIFOLD, CASE DRAIN/SWING LOCK	



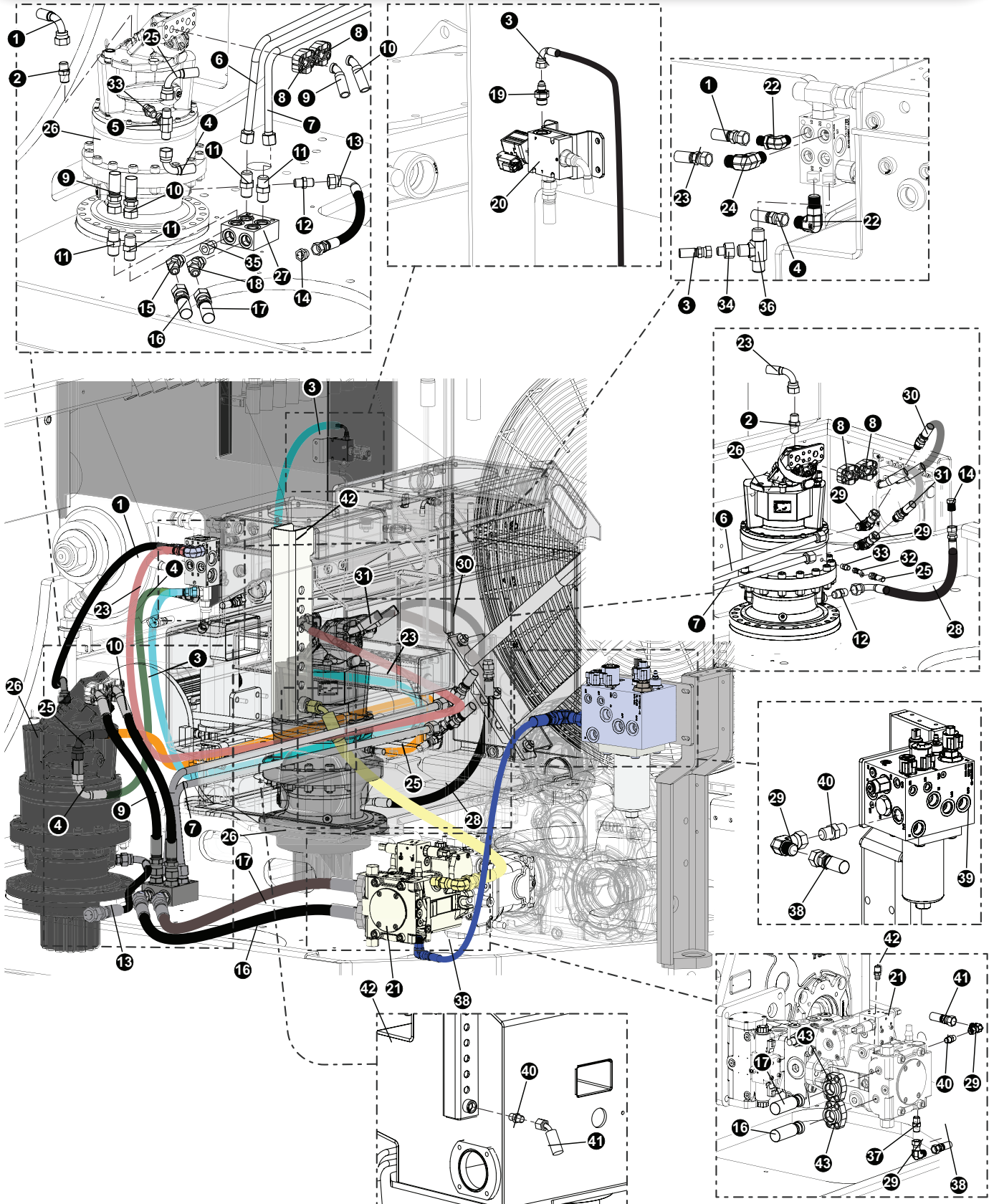
See referenced page for component or assembly breakdown.



Kit or Assembly - includes all items indented underneath.

FELLER BUNCHER HYDRAULICS ASSEMBLY, AND INSTALLATION

SWING MOTOR HYDRAULICS PARTS AND ASSEMBLY



FELLER BUNCHER HYDRAULICS ASSEMBLY, AND INSTALLATION

SWING MOTOR HYDRAULICS PARTS AND ASSEMBLY

REF	PART #	QTY	DESCRIPTION	SEE SECTION
1	57941 (Kit #)	1	HOSE ASSEMBLY - P# 387TC 27 08-08JS-0809 (Control Valve to Manifold)	
2	52439	1	CONNECTOR, MALE ISO 6149	
3	58179 (KIT #)	1	HOSE ASSEMBLY - P# 387TC 106 04-04JS-04J9 (Charge to Greaser Valve)	
4	58179 (KIT #)	1	HOSE ASSEMBLY - (P# 387TC 29 04-04OS-04O9) (Swing Brake to Manifold)	
5	23541	1	TEE - 4 S6LO-S	
6	57300	1	TUBELINE, SWING MAN L TO R SWNG MTR BULKHEAD	
7	57316	1	TUBELINE, SWNG MAN R TO R SWNG MTR BULK	
8	16660	4	KIT, SPLIT FLANGE - .75 (CODE 62)	
9	58179 (KIT #)	1	HOSE ASSEMBLY - (P# 787TC 22.5 12-12JS-12PH4)	
10	58179 (KIT #)	1	HOSE ASSEMBLY - (P# 787TC 23.5 12-12JS-12PH4)	
11	11324	4	CONNECTOR, STR - 6400-12	
12	24182	2	CONNECTOR, STR - 6002-08-8BSPP	
13	58179 (KIT #)	1	HOSE ASSEMBLY - (P# 387TC 30 08-08OS-08O9)	
14	16032	2	PLUG - FF9767-08S	
15	16460	1	ELBOW, 45 - FF2068T-1616S	
16	58179 (KIT #)	1	HOSE ASSEMBLY - (P# 787TC 48 16-16OS-16PH)	
17	58179 (KIT #)	1	HOSE ASSEMBLY - (P# 787TC 48.5 16-16OS-16PH)	
18	21039	1	ELBOW, 45 - 16-12 V5OLO-S	
19	54809	1	CONNECTOR, STR - 4 JIC x -6 ORB	
20	57509	1	VALVE, AUTO GREASE SYSTEM	
21	57214	1	PUMP, SWING (TL765C) (90cc)	
22	16296	2	ELBOW, 90 - FF1868T-0606S	
23	58179 (KIT #)	1	HOSE ASSEMBLY - (P# 387TC 84 08-08JS-08O9)	
24	54810	1	ELBOW, 90* LONG -8 JIC	
25	58179 (KIT #)	1	HOSE ASSEMBLY - (P# 387TC 55 04-04OS-04O9)	
26	57213	1	MOTOR, SWING - L&S 32.5:1 / 56CC (TL765C)	
27	57284	1	MANIFOLD, SWING COMBINE FLOW	
28	58179 (KIT #)	1	HOSE ASSEMBLY - (P# 387TC 36 08-08OS-08O9)	
29	15477	4	ELBOW, 90 SWIVEL - 12 C6X-S	
30	58179 (KIT #)	1	HOSE ASSEMBLY - (P# 787TC 31 12-12MJ-12PH4)	
31	58179 (KIT #)	1	HOSE ASSEMBLY - (P# 787TC 26 12-12MJ-12PH4)	
32	53719	1	FITTING, SWIVEL NUT ELBOW - 45 DEG	
33	19469	2	CONNECTOR, STR METRIC - 4M12F82EDMLO-S	
34	16294	1	BUSHING, REDUCER - 6410-6-4	
35	19291	1	BUSHING, REDUCER - 6410-12-16	
36	55701	1	FITTING, TEE - 6 R5OX-S	
37	52078	1	CONNECTOR, STR - (10-12 F50L0-S)	
38	58179 (Kit#)	1	722TC42 12-12JS-12J4-SW	
39	(Click Here)	1	Charge/Cooler Manifold..... EE-1	
40	15152	3	CONNECTOR, STR - FF1852T-1212S	
41	58179 (KIT #)	1	HOSE ASSEMBLY - (P# 187TC48.5 12-12OS-12O4)	
42	57819	1	TAP, GAUGE PORT - #4 SAE Oring Boss- ST	
43	15113	2	KIT, SPLIT FLANGE - 1" (CODE 62)	



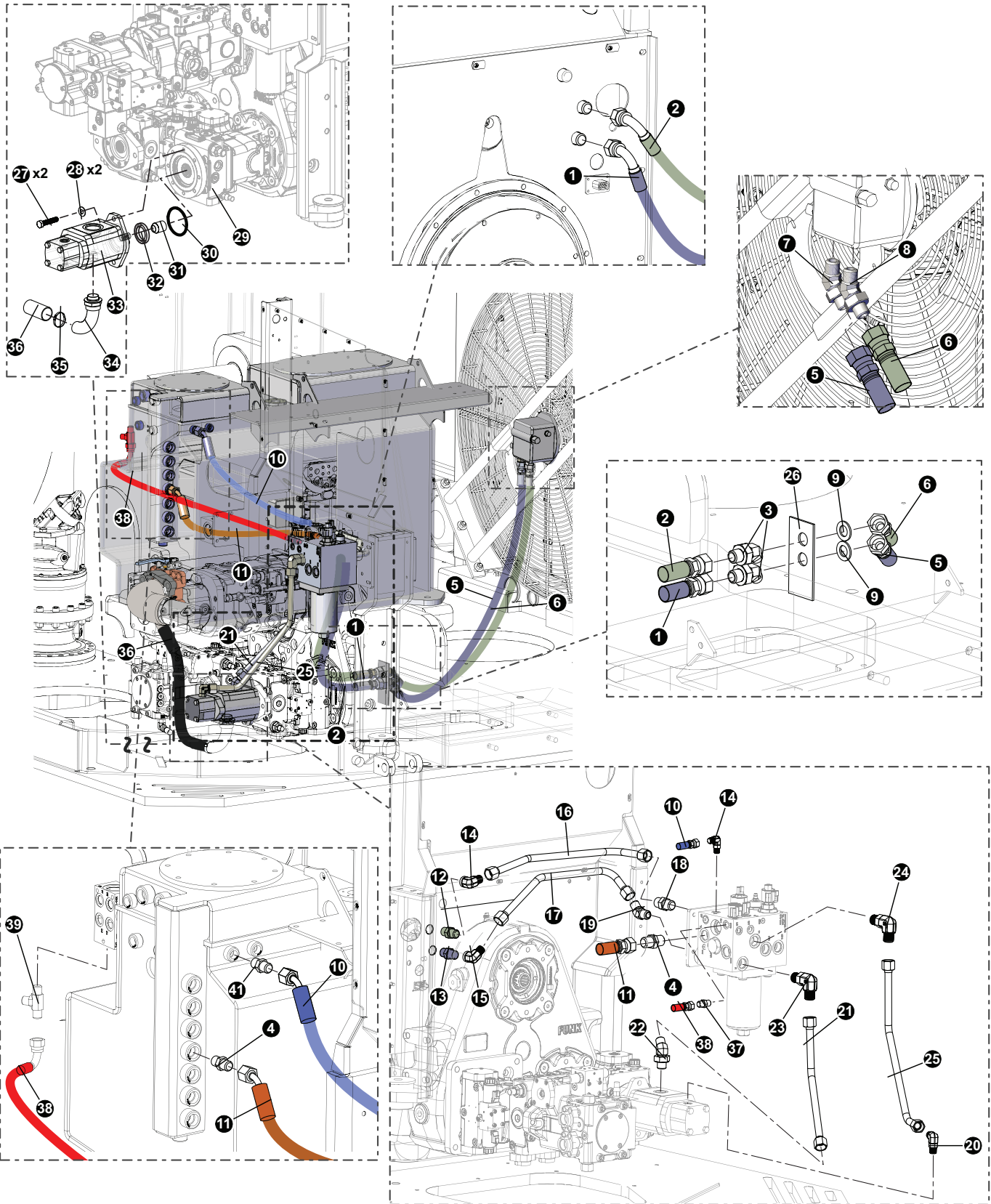
See referenced page for component or assembly breakdown.



Kit or Assembly - includes all items indented underneath.

FELLER BUNCHER HYDRAULICS ASSEMBLY, AND INSTALLATION

TL-775 CHARGE MANIFOLD PRESSURE, DRAINAGE, AND TANK CONNECTIONS



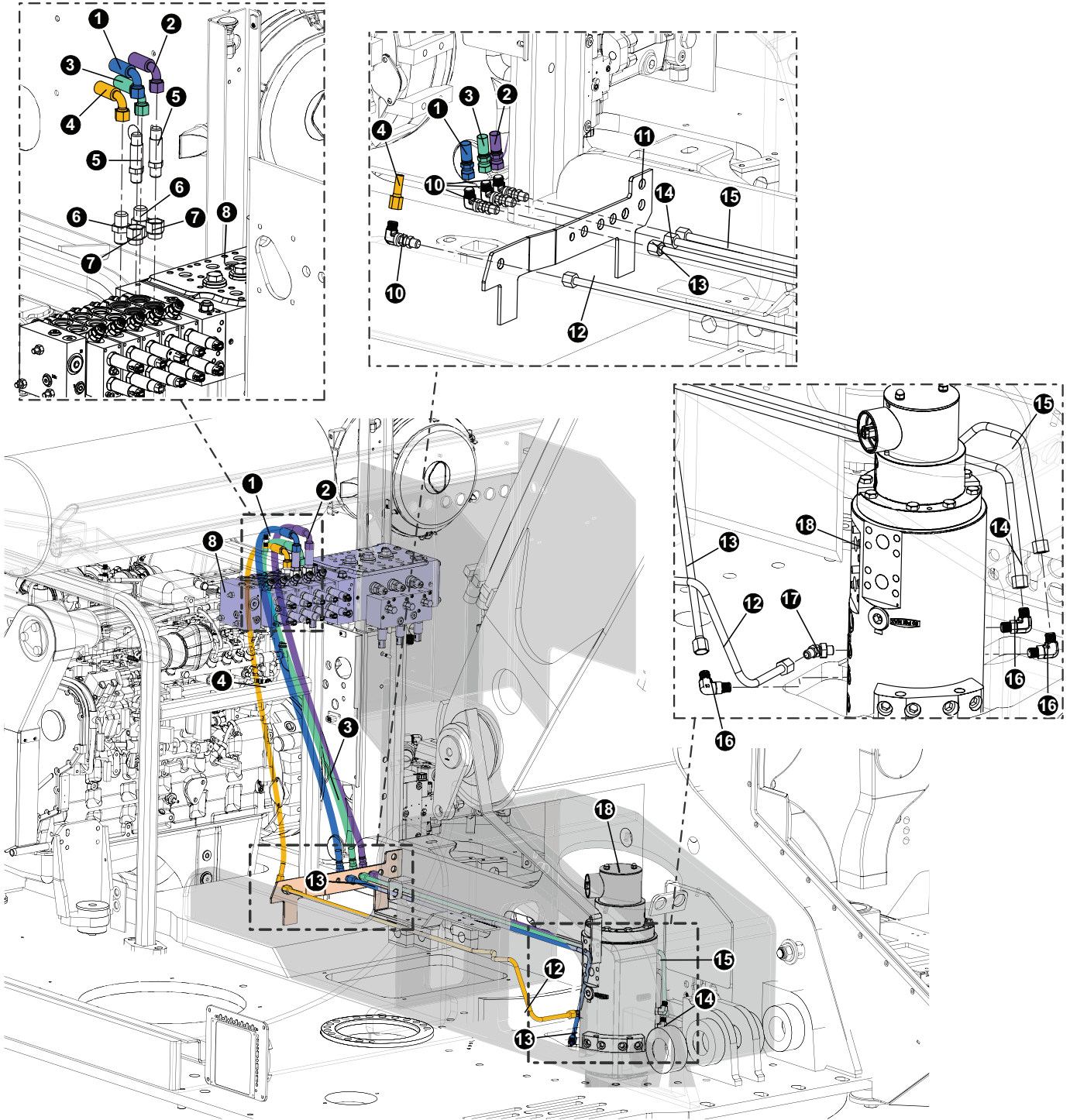
UPPER TURNTABLE - NV & LV

TL-775 CHARGE MANIFOLD PRESSURE, DRAINAGE, AND TANK CONNECTIONS

REF	PART #	QTY	DESCRIPTION	SEE SECTION
1	(See Description)	1	Radiator Return Hose (Supplier Hose Part #: 387TC 42.5 12 12OS -12J9) - Engine BH to Fan Motor BH	
2	(See Description)	1	Radiator Supply Hose (Supplier Hose Part #: 387TC 42.5 12 12OS -12J9) -Engine BH to Fan Motor BH	
3	19754	2	CONNECTOR, STR BULKHEAD - 12 WLO-WLNL-S	
4	15152	3	CONNECTOR, STR - FF1852T-1212S	
5	(See Description)	1	Radiator Return Hose (Supplier Hose Part #: 187TC 45 12-12OS-16OS) -Fan Motor to Fan Motor BH	
6	(See Description)	1	Radiator Supply Hose (Supplier Hose Part #: 387TC 43 12-12OS-12OS) -Fan Motor to Fan Motor BH	
7	19127	1	ELBOW, 45 - FF2068T-1212S	
8	16460	1	ELBOW, 45 - FF2068T-1616S	
9	57126	2	Washer	
10	(See Description)	1	Radiator Return Hose (Supplier Hose Part #: 387TC 63 06-06OS-0604-W) - Hydraulic Tank to Charge Manifold)	
11	(See Description)	1	Charge nlock case drain (Supplier Hose Part #: 187TC 52 12-12OS -1204) - Hydraulic Tank to Charge Manifold)	
12	11324	1	CONNECTOR, STR - 6400-12	
13	17009	1	CONNECTOR, STR BULKHEAD - 2700-12	
14	54704	1	ELBOW, 90 BULK 12 WETX-WLN-S (12 JIC MM)	
15	15477	1	ELBOW, 90 SWIVEL - 12 C6X-S	
16	58032	1	TUBELINE, FR TO BULKHEAD FAN RETURN	
17	57929	1	TUBELINE, FO TO BULKHEAD FAN PRESSURE	
18	11324	1	CONNECTOR, STR - 6400-12	
19	15474	1	ELBOW, 45 - 6802-8	
20	53032	1	ELBOW, 90 - 12 JIC X 10 ORB	
21	57928	1	TUBELINE, F1 TO FRONT GEAR PUMP FAN PRESSURE	
22	15472	1	ELBOW, 45 SWIVEL - 12 V6X-S	
23	11306	1	ELBOW, 90 12 C5OX-S	
24	11306	1	ELBOW, 90 12 C5OX-S	
25	57927	1	TUBELINE, C1 TO REAR GEAR PUMP	
26	62152	1	WELDMENT, BH-TUBELINES - 765/775	
27	18415	2	BOLT - 12MM-1.75P X 30MM	
28	18735	2	WASHER, FLAT - 12MM	
29	(Click Here)	1	TRACK DRIVE PUMP	DH-3
30	21624	1	O-RING, CHARGE PUMP PILOT (AA4VG90)	
31	R909650371	1	COUPLING, Charge Pump	
33	57609	1	PUMP, CHARGE - DUAL FLOW	
32	58177		SHAFT SEAL 25.4-38.1-6.35 NBR	
	1517010194		SEAL KIT	
	1517010152		SEAL KIT	
34	57663	1	FITTING, ELBOW - HOSE END 90°	
35	55614	2	CLAMP, CONSTANT TORQUE - 1.75"	
36	58179	1	KIT, HOSE-D SERIES UPPER (Supplier Hose Part #: 811 HT42 24-0-0)	
37	18034	1	CONNECTOR, STR - FF1852T-0606S	
38	(See Description)	1	Charge Pressure Gauge (Supplier Hose Part #: 387TC75 06-06OS-06J9-W)	
39	55701	1	FITTING, TEE - 6 R5OX-S	

FELLER BUNCHER HYDRAULICS ASSEMBLY, AND INSTALLATION


CAB LEVELING HYDRAULICS PARTS AND ASSEMBLY




FELLER BUNCHER HYDRAULICS ASSEMBLY, AND INSTALLATION

CAB LEVELING HYDRAULICS PARTS AND ASSEMBLY

REF	PART #	QTY	DESCRIPTION	SEE SECTION
1	58239	2	HOSE ASSEMBLY - 722TC 58 08-08JS 08J9 (Cab Level (LVL) section "A" to Bulkhead)	
2	58239	2	HOSE ASSEMBLY - 722TC 59 08-08JS 08J9 (Cab Level (LVL) section "B" to Bulkhead)	
3	58239	1	HOSE ASSEMBLY - 722TC 54.5 08-08JS 08J9 (Bulkhead to Rotary Manifold Port 2)	
4	58239	1	HOSE ASSEMBLY - 722TC 51 08-08JS 08J9 (Bulkhead to Rotary Manifold Port 4)	
5	55513	2	FITTING, STRAIGHT CONNECTOR #8	
6	55380	2	FITTING, STRAIGHT - 8-12 F5OX-S	
7	20067	2	BUSHING, REDUCER - 6410-12-8	
8	(Click Here)	1	MAIN CONTROL VALVE	FH-1
10	55382	4	FITTING, BULKHEAD - 8 WETX-WLN-S	
11	(Click Here)	1	UPPER TURNTABLE	UP-1
12	57269	1	TUBELINE, RM #5 TO LEVEL BULKHEAD	
13	57272	1	TUBELINE, RM #6 TO LEVEL BULKHEAD	
14	57271	1	TUBELINE, RM #4 TO LEVEL BULKHEAD	
15	57270	1	TUBELINE, RM #2 TO LEVEL BULKHEAD	
16	16360	1	ELBOW, 90 - FF1868T-0808S	
17	19126	1	ELBOW, 45 - FF2068T-0808S	
18	(Click Here)	1	ROTARY MANIFOLD	UP-1

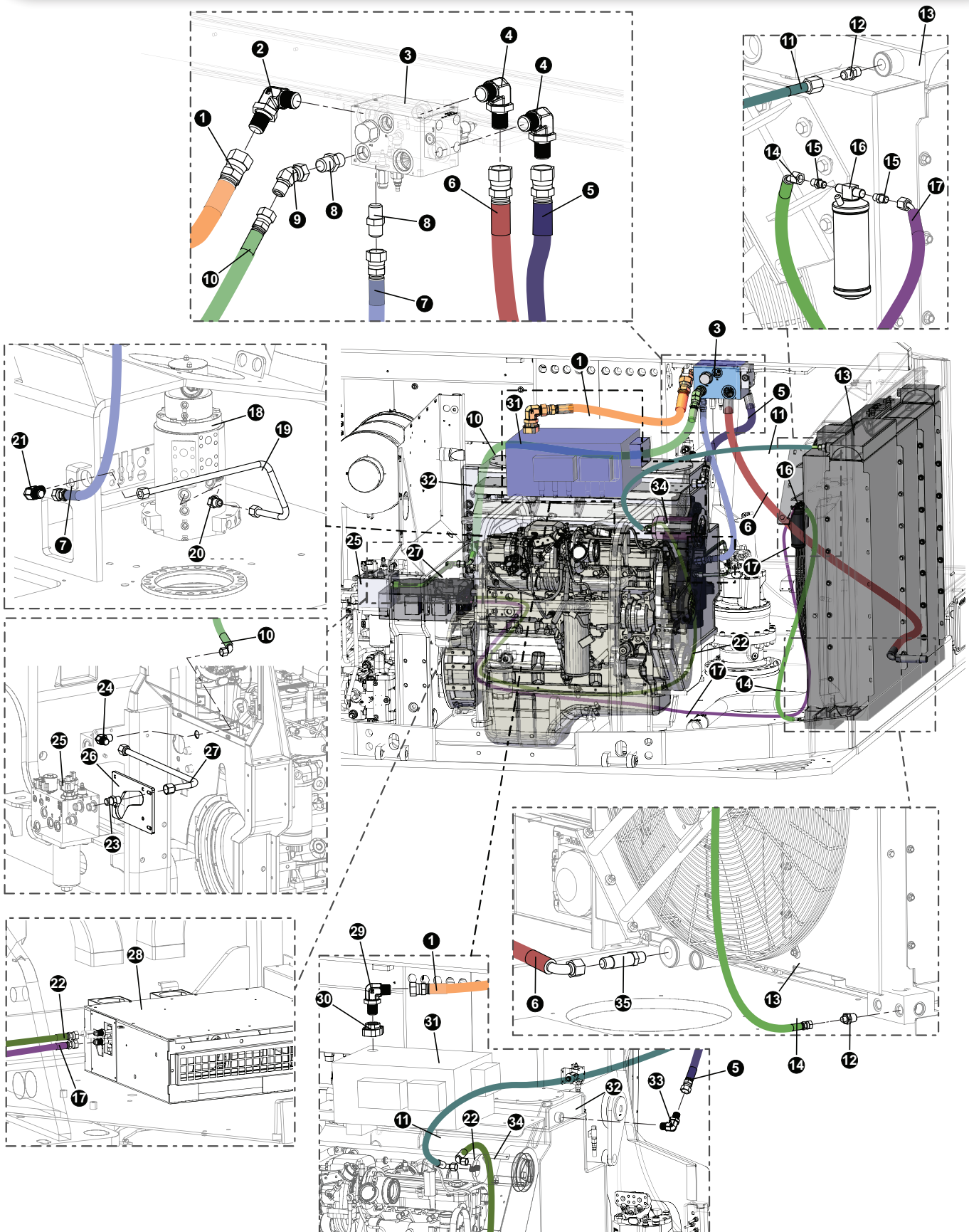
 See referenced page for component or assembly breakdown.

 Bulk material - order length required in feet or meters.

 Kit or Assembly - includes all items indented underneath.

FELLER BUNCHER HYDRAULICS ASSEMBLY, AND INSTALLATION

TL-775 SUPPLY, RETURN, AND FLUSHING CIRCUITS - SERIAL # TL745D-0760-061920 AND BEFORE



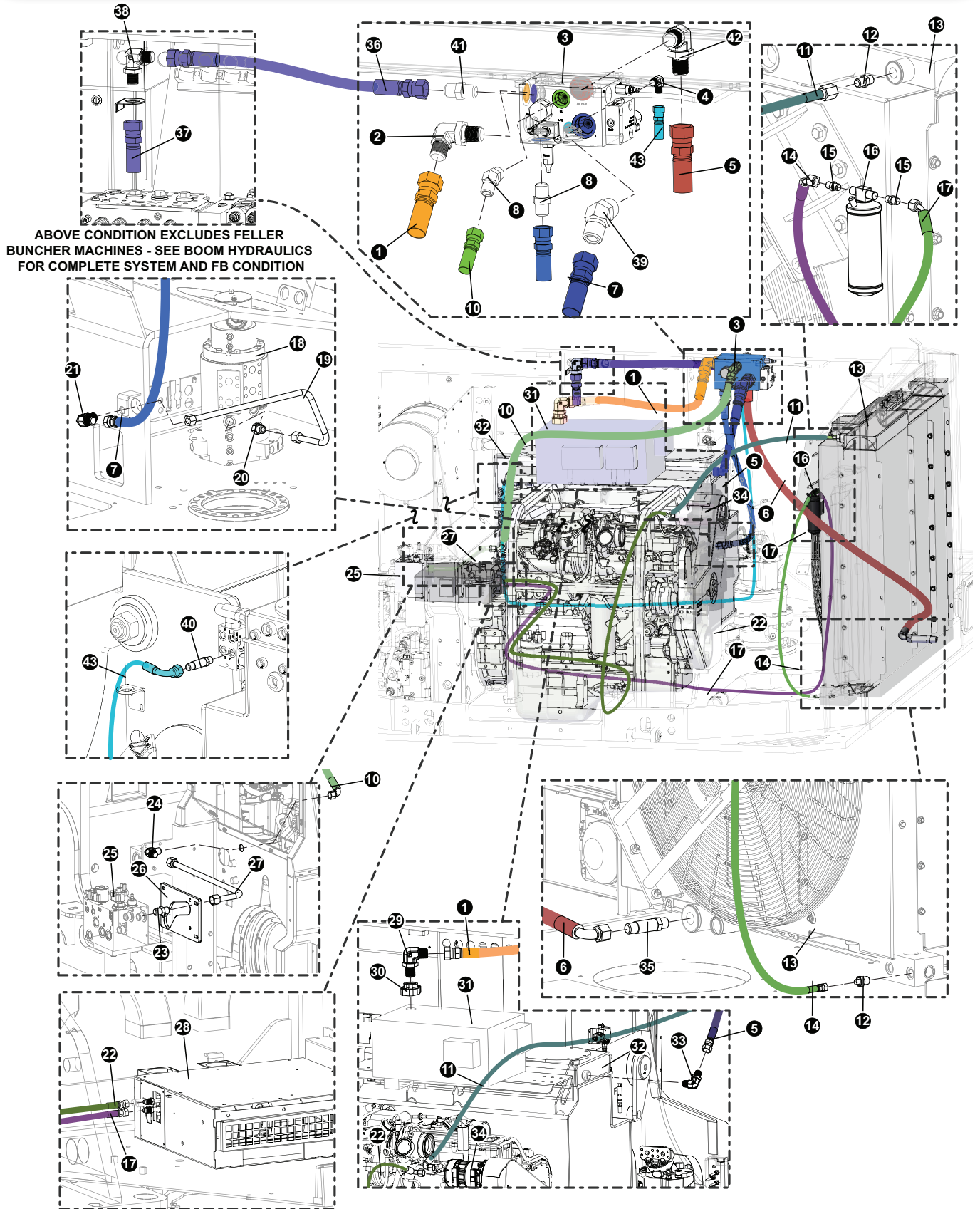
FELLER BUNCHER HYDRAULICS ASSEMBLY, AND INSTALLATION

TL-775 SUPPLY, RETURN, AND FLUSHING CIRCUITS - SERIAL # TL745D-0760-061920 AND BEFORE

REF	PART #	QTY	DESCRIPTION	SEE SECTION
1	(See Description)	1	Main Contol Valve Flush Hose (Supplier Hose Part #: 187TC 40 20-200S-200S)	
2	50470	1	ELBOW, 90 - 849-TT0-16X20	
3	(Click Here)	1	MANIFOLD, OIL COOLER CONTROL - D SERIES	UP-1
4	(See Description)	2	90 Fitting (Supplier Part #: 24-C50LOS-2404)	
5	(See Description)	1	Hydraulic Tank Flush Hose (Supplier Hose Part #: 187TC30 24-240S-2409)	
6	(See Description)	1	Radiator Flush Hose (Supplier Hose Part #: 187TC83 24-2409-240S-SW)	
7	(See Description)	1	Rotary Manifold Flush Hose (Supplier Hose Part #: 387TC47 12-JS-120S-SW)	
8	15226	2	CONNECTOR, STR - FF1852T-1216S	
10	(See Description)	1	Engine Bulkhead/Charge Mfld Flush Hose (Supplier Hose Part #: 387TC71 12-OS-12J9-SW)	
11	(See Description)	1	(Find # on Machine (Badger Truck Kit #BK1163)	
12	(See Description)	2	Straight Fitting (Badger Truck #BK1189)	
13	(Click Here)	1	RADIATOR / OIL COOLER - STAGE V TAIL SWING	UP-3
14	(See Description)	1	(Find # on Machine (Badger Truck Kit #BK1163)	
15	(See Description)	4	Straight Fitting (Badger Truck #21.31406)	
16	50937	1	DRIER, A/C - (EAGLE 24V SYSTEM)	
17	(See Description)	1	(Find # on Machine (Badger Truck Kit #BK1163)	
18	(Click Here)	1	ROTARY MANIFOLD	UP-1
19	57279	1	TUBELINE, RM #7 TO FLUSH BULKHEAD	
20	15474	1	ELBOW, 45 - 6802-12	
21	54704	1	ELBOW, 90 BULK 12 WETX-WLN-S (12 JIC MM)	
22	(See Description)	1	(Find # on Machine (Badger Truck Kit #BK1163)	
23	11324	1	CONNECTOR, STR - 6400-12	
24	54704	1	ELBOW, 90 BULK 12 WETX-WLN-S (12 JIC MM)	
25	(Click Here)	1	CHARGE MANIFOLD	EE-1
26	60444	1	MOUNT, MANIFOLD	
27	57931	1	TUBELINE, T2 TO BULKHEAD	
28	(Click Here)	1	AC HEATER	OC-4
29	17055	1	ELBOW, 90 - FF1868T-2020S	
30	17909	1	CONNECTOR, FLANGE PAD-W46K-20-20 CODE 61	
31	(Click Here)	1	MAIN CONTROL VALVE	FH-1
32	(Click Here)	1	HYDRAULIC TANK	UP-2
33	22448	1	CONNECTOR, STR - 848-TT0-24X24	
34	(Click Here)	1	AC CONDENSER	OC-4
35	57498	1	VALVE, CHECK - ORIFICE GREASE SYSTEM	

FELLER BUNCHER HYDRAULICS ASSEMBLY, AND INSTALLATION

TL-775 SUPPLY, RETURN, AND FLUSHING CIRCUITS - SERIAL # TL745D-0761-061920 AND AFTER



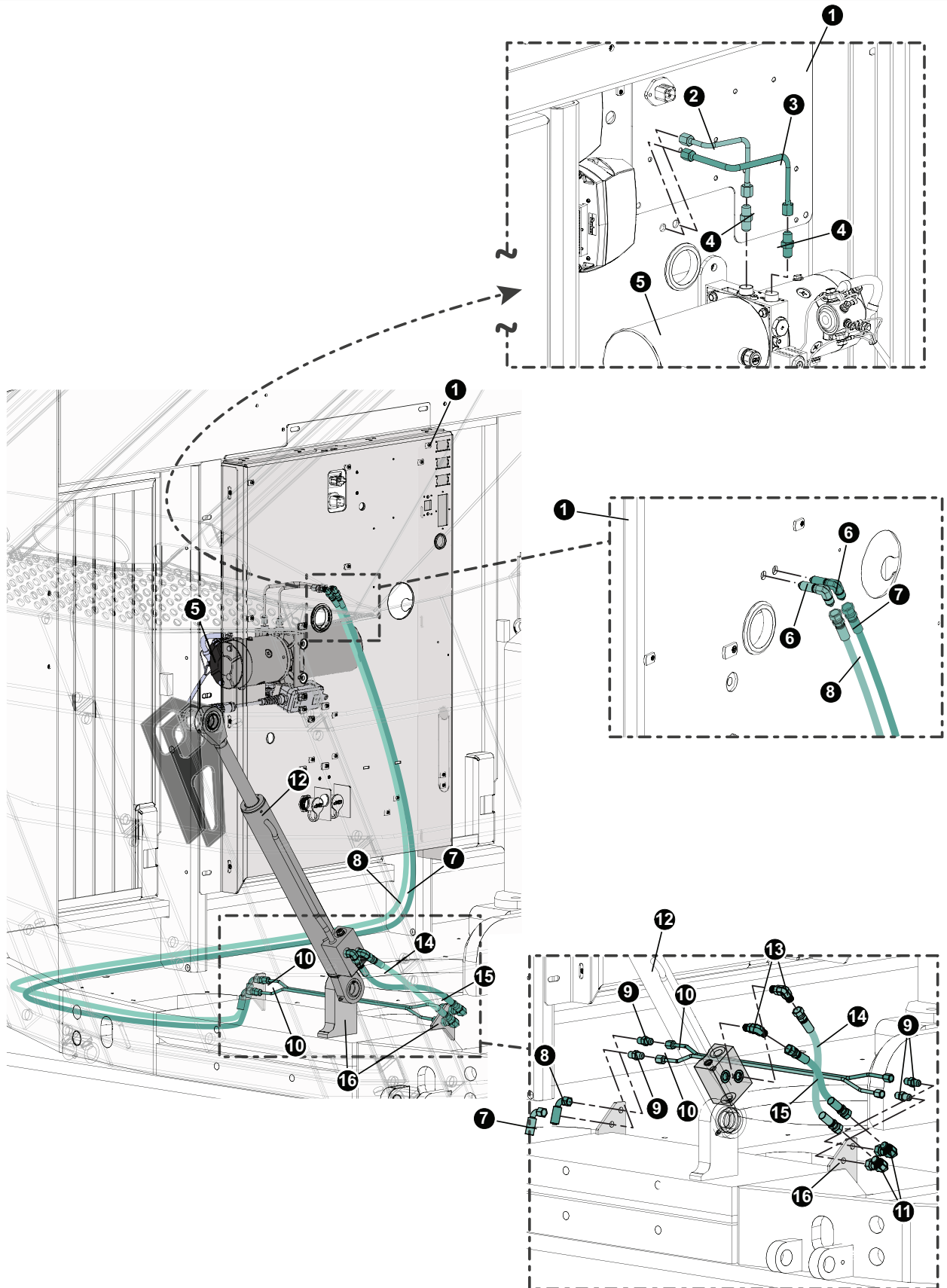
FELLER BUNCHER HYDRAULICS ASSEMBLY, AND INSTALLATION

TL-775 SUPPLY, RETURN, AND FLUSHING CIRCUITS - SERIAL # TL745D-0761-061920 AND AFTER

REF	PART #	QTY	DESCRIPTION	SEE SECTION
1	(See Description)	1	Main Contol Valve Flush Hose (Supplier Hose Part #: 187TC 40 20-200S-200S)	
2	50470	1	ELBOW, 90 - 849-TT0-16X20	
3	(Click Here)	1	MANIFOLD, OIL COOLER CONTROL - D SERIES	UP-1
4	(See Description)	2	90 Fitting (Supplier Part #: 24-C50LOS-2404)	
5	(See Description)	1	Hydraulic Tank Flush Hose (Supplier Hose Part #: 187TC30 24-240S-2409)	
6	(See Description)	1	Radiator Flush Hose (Supplier Hose Part #: 187TC83 24-2409-240S-SW)	
7	(See Description)	1	Rotary Manifold Flush Hose (Supplier Hose Part #: 387TC47 12-JS-120S-SW)	
8	15226	2	CONNECTOR, STR - FF1852T-1216S	
10	(See Description)	1	Engine Bulkhead/Charge Mfld Flush Hose (Supplier Hose Part #: 387TC71 12-OS-12J9-SW)	
11	(See Description)	1	(Find # on Machine (Badger Truck Kit #BK1163)	
12	(See Description)	2	Straight Fitting (Badger Truck #BK1189)	
13	(Click Here)	1	RADIATOR / OIL COOLER - STAGE V TAIL SWING	UP-3
14	(See Description)	1	(Find # on Machine (Badger Truck Kit #BK1163)	
15	(See Description)	4	Straight Fitting (Badger Truck #21.31406)	
16	50937	1	DRIER, A/C - (EAGLE 24V SYSTEM)	
17	(See Description)	1	(Find # on Machine (Badger Truck Kit #BK1163)	
18	(Click Here)	1	ROTARY MANIFOLD	UP-1
19	57279	1	TUBELINE, RM #7 TO FLUSH BULKHEAD	
20	15474	1	ELBOW, 45 - 6802-12	
21	54704	1	ELBOW, 90 BULK 12 WETX-WLN-S (12 JIC MM)	
22	(See Description)	1	(Find # on Machine (Badger Truck Kit #BK1163)	
23	11324	1	CONNECTOR, STR - 6400-12	
24	54704	1	ELBOW, 90 BULK 12 WETX-WLN-S (12 JIC MM)	
25	(Click Here)	1	CHARGE MANIFOLD	EE-1
26	60444	1	MOUNT, MANIFOLD	
27	57931	1	TUBELINE, T2 TO BULKHEAD	
28	(Click Here)	1	AC HEATER	OC-4
29	17055	1	ELBOW, 90 - FF1868T-2020S	
30	17909	1	CONNECTOR, FLANGE PAD-W46K-20-20 CODE 61	
31	(Click Here)	1	MAIN CONTROL VALVE	FH-1
32	(Click Here)	1	HYDRAULIC TANK	UP-2
33	22448	1	CONNECTOR, STR - 848-TT0-24X24	
34	(Click Here)	1	AC CONDENSER	OC-4
35	57498	1	VALVE, CHECK - ORIFICE GREASE SYSTEM	
36	(See Description)	1	NON-FB Flush Hose (Supplier Hose Part #: 187TC 39-20-200S-20JS-SW)	
37	(See Description)	1	NON-FB Flush Hose (Supplier Hose Part #: 187TC 38.5-20-200S-20JS-SW)	
38	52429	1	ELBOW, 90 BULKHEAD - #20 WELO-WLNL-S (NON-FB Machine)	
39	24257	1	ELBOW, 45 - FF2068T-2424S	
40	55513	1	FITTING, STRAIGHT CONNECTOR #8	
41	17344	1	CONNECTOR, STR - FF1852T-2020S (NON-FB Machine)	
42	15481	1	ELBOW, 90 - 6801-8	
43	(See Description)	1	HOC Manifold Drainage (Supplier Hose Part #: 387TC 116-08-08JS-08J9)	

FELLER BUNCHER HYDRAULICS ASSEMBLY, AND INSTALLATION

TL/TN-775 GULLWING CYLINDER HYDRAULIC SYSTEM



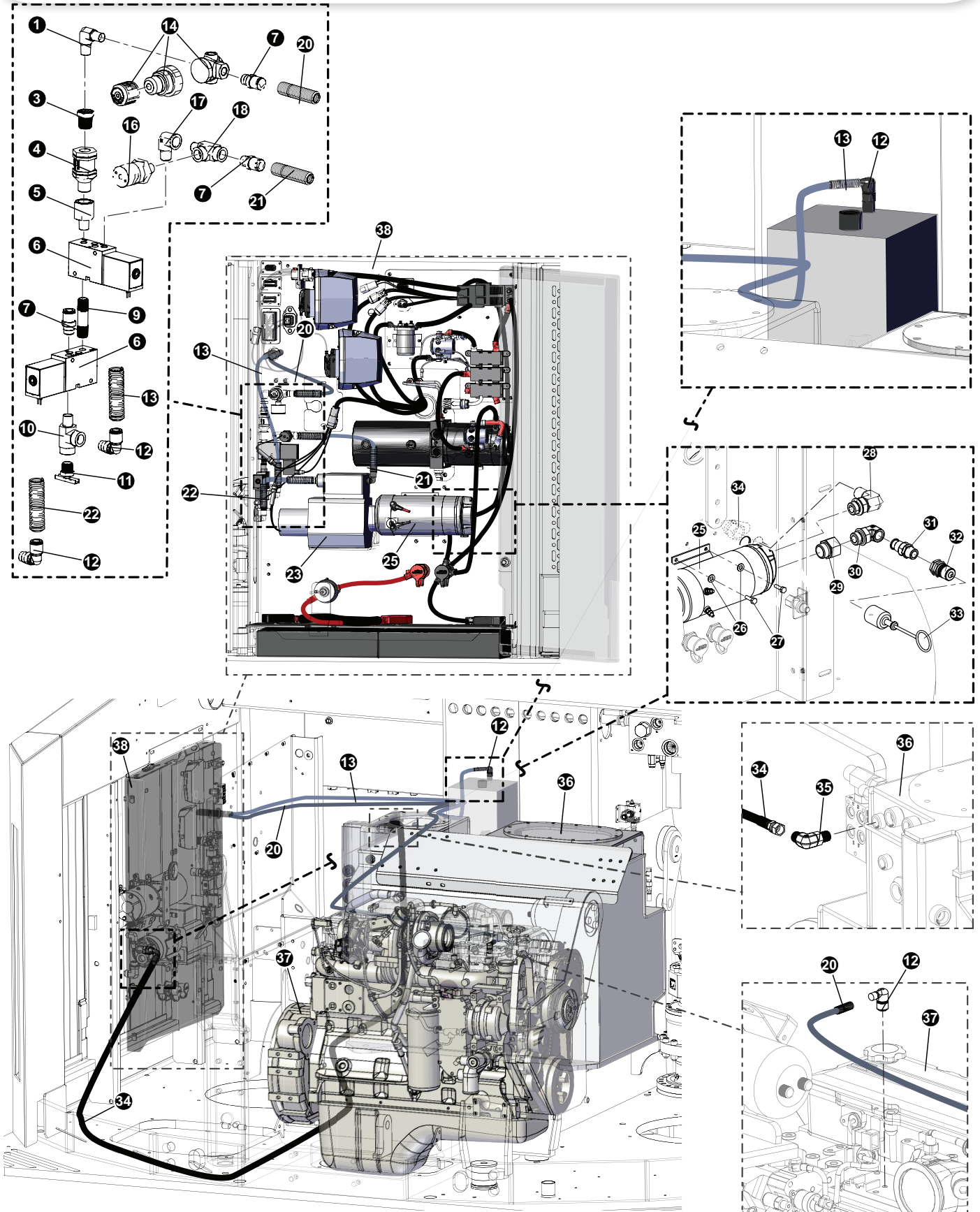
FELLER BUNCHER HYDRAULICS ASSEMBLY, AND INSTALLATION

TL/TN-775 GULLWING CYLINDER HYDRAULIC SYSTEM

REF	PART #	QTY	DESCRIPTION	SEE SECTION
1	(Click Here)	1	PANEL, ELECTRICAL - 775D	ES-1
2	55593	1	TUBELINE, CANOPY LIFT PUMP TO B PORT	
3	55592	1	TUBELINE, CANOPY LIFT PUMP A PORT	
4	54809	2	CONNECTOR, STR - 4 JIC x -6 ORB	
5	(Click Here)	1	Pump, Gullwing Lift	ES-1
6	54808	2	90 Deg. Bulkhead Union Elbow - 4 JIC with L/N	
7	(See Description)	1	Gullwing Lift Pump Hose (Suppier Hose Part #: 387TC 129.5 04-04JS-04J9)	
8	(See Description)	1	Gullwing Lift Pump Hose (Suppier Hose Part #: 387TC 126.5 04-04JS-04J9)	
9	55383	4	FITTING, BULKHEAD - 4 WTX-WLN-S	
10	57337	2	TUBELINE, CANOPY CYL BULKHEAD	
11	17023	2	ELBOW, 90 SWIVEL - 6500-4	
12	(Click Here)	1	CYLINDER, GULLWING LIFT - COLUMBUS (2.5") (57848) (55137 OBS)	UP-1
13	51931	2	ELBOW, 90 - 4-6 C50X-S (JIC)	
14	(See Description)	1	Gullwing Lift Pump Hose (Suppier Hose Part #: 387TC 16-04 04JS-04JS-SW)	
15	(See Description)	1	Gullwing Lift Pump Hose (Suppier Hose Part #: 387TC 18-04 04JS-04JS-SW)	
16	(Click Here)	1	TL/TN Upper Turntable	UP-1

FELLER BUNCHER HYDRAULICS ASSEMBLY, AND INSTALLATION




TL-775 SUPPLY, RETURN, AND FLUSHING CIRCUITS



FELLER BUNCHER HYDRAULICS ASSEMBLY, AND INSTALLATION

TL-775 SUPPLY, RETURN, AND FLUSHING CIRCUITS

REF	PART #	QTY	DESCRIPTION	SEE SECTION
1	52741	1	ELBOW, MALE PIPE - 1/4 CR-S	
3	11318	1	BUSHING, REDUCER - 5406-6-4	
4	15652	1	VALVE, CHECK - HYDRAULIC/FUEL TANK	
5	52145	1	ADAPTER, EXPANDER - 3/8 X 1/4 FG-S	
6	51616	2	VALVE, VACUUM PUMP - HYD TANK	
9	16314	1	NIPPLE, PIPE - .25" X 2"	
10	10393	1	TEE - 5602-4	
11	15650	1	VALVE, TANK VENT - DC602-6	
12	51739	4	CONNECTOR, ELBOW -PUSH ON (VACUUM)	
13	51738	lin. ft	HOSE, 3/8" PUSH ON - VACUUM PUMP	
14	15649	1	REGULATOR, TURBO BOOST	
16	51737	1	SWITCH, PRESSURE - VACUUM PUMP (HYD TANK)	
17	21147	1	ELBOW, 90 STREET .25" NPT - BRASS	
18	10393	1	TEE - 5602-4	
19	52506	2	CONNECTOR, STR - PUSH HOSE 3/8 (VACUUM)	
20	51738	lin. ft	HOSE, 3/8" PUSH ON - VACUUM PUMP	
21	51738	lin. ft	HOSE, 3/8" PUSH ON - VACUUM PUMP	
22	51738	lin. ft	HOSE, 3/8" PUSH ON - VACUUM PUMP	
23	(Click Here)	1	PUMP, VACUUM - HYD TANK	UP-2
25	55691	1	FILL PUMP ASSEMBLY	
26	10801	4	WASHER, FLAT - .3125"	
27	15605	4	BOLT - .3125" X .75"	
28	55712	1	FITTING, ELBOW - MALE 8-8C4OMXS	
29	55711	1	FITTING, 3/4 - 12F40HG55	
30	22383	1	ELBOW, 90 - 12 AOEG5-S	
31	54998	1	FITTING, FILL PUMP	
32	55620	1	NIPPLE, 60 SERIES - H6-63-T12	
33	55617	1	CAP, QUICK CONNECT - RUBBER (RED)	
34	(See Description)	1	Fill Pump Supply Hose (Supplier Hose Part #: 387TC 227 08-08JS-08J9L)	
35	15481	1	ELBOW, 90 - 6801-8	
36	(Click Here)	1	HYDRAULIC TANK ASSEMBLY	UP-2
38	47867	1	WELDMENT, ELEC PANEL, D-MODEL	

-  See reference page for component or assembly breakdown.
-  Kit or Assembly - includes all items indented underneath.
-  Sold in bulk per foot - Please specify length when ordering.

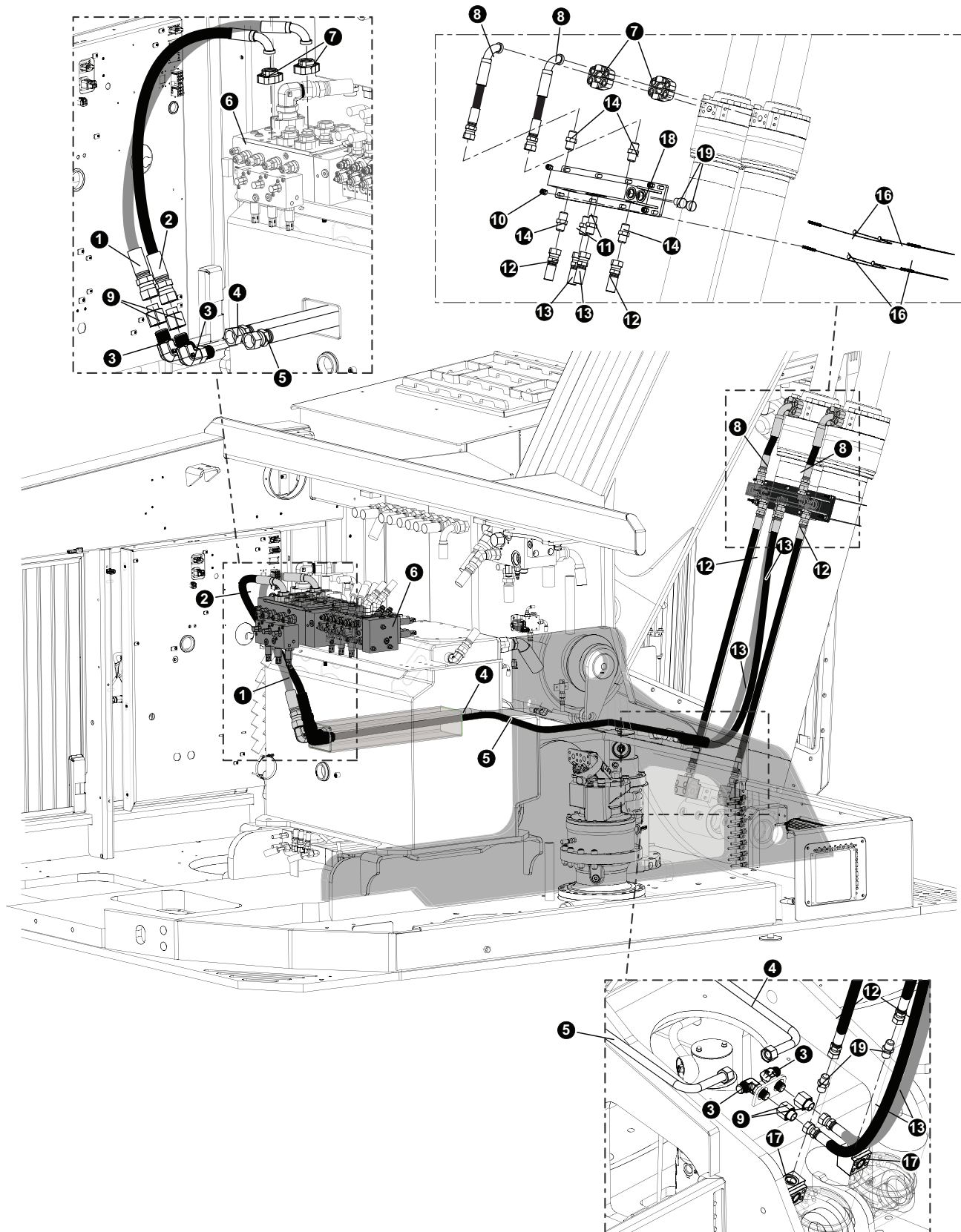
PAGE INTENTIONALLY LEFT BLANK

SECTION FH-2

FELLER BUNCHER HYDRAULICS ASSEMBLY AND INSTALLATION

FELLER BUNCHER HYDRAULICS ASSEMBLY AND INSTALLATION


MAIN BOOM CYLINDER HYDRAULICS PARTS AND ASSEMBLY




FELLER BUNCHER HYDRAULICS ASSEMBLY AND INSTALLATION

MAIN BOOM CYLINDER HYDRAULICS PARTS AND ASSEMBLY

REF	PART #	QTY	DESCRIPTION	SEE SECTION
1	58239 (Kit #)	1	HOSE ASSEMBLY - P# 722TC38.5 16-16OS-16PH9 (Control Valve to Boom Cylinder Tube)	
2	58239 (Kit #)	1	HOSE ASSEMBLY - P# 722TC37 16-16OS-16PH9 (Control Valve to Boom Cylinder Tube)	
3	52429	4	ELBOW, 90 BULKHEAD - #20 WELO-WLNL-S	
4	57260	1	TUBELINE, MC BULKHEAD TO MC BULKHEAD	
5	57282	1	TUBELINE, MC BULKHEAD TO MC BULKHEAD	
6	(Click Here)	1	VALVE, MAIN - REX HARVESTER / SHEAR	UP-2
7	15113	4	KIT, SPLIT FLANGE - 1" (CODE 62)	
8	58239 (Kit #)	2	HOSE ASSEMBLY - P#722TC15 12-12OS-16PH9 (Main Cylinder to Cylinder Manifold)	
9	20455	4	CONNECTOR, REDUCER - ORS FF2281T-1620S	
10	55262	8	NUT, LOCK - "C" SERIES HYD TANK COVER	
11	15225	2	CONNECTOR, STR - FF1852T-1616S	
12	58179 (Kit #)	2	HOSE ASSEMBLY - P#722TC41 12-12OS-12OS-SW (Main Cylinder to Cylinder Manifold)	
13	58179 (Kit #)	2	HOSE ASSEMBLY - P#722TC54 16-16OS-16OS (Main Cylinder to Cylinder Manifold)	
14	15152	4	CONNECTOR, STR - FF1852T-1212S	
16	57748	4	CABLE, CYLINDER - 19" - 765	
17	57601	2	FLANGE, BLOCK ELBOW W184-16-16U CODE 62	
18	48391	1	MANIFOLD, MAIN BOOM - TL765	
19	15584	2	PLUG - 6408-HHP-12	

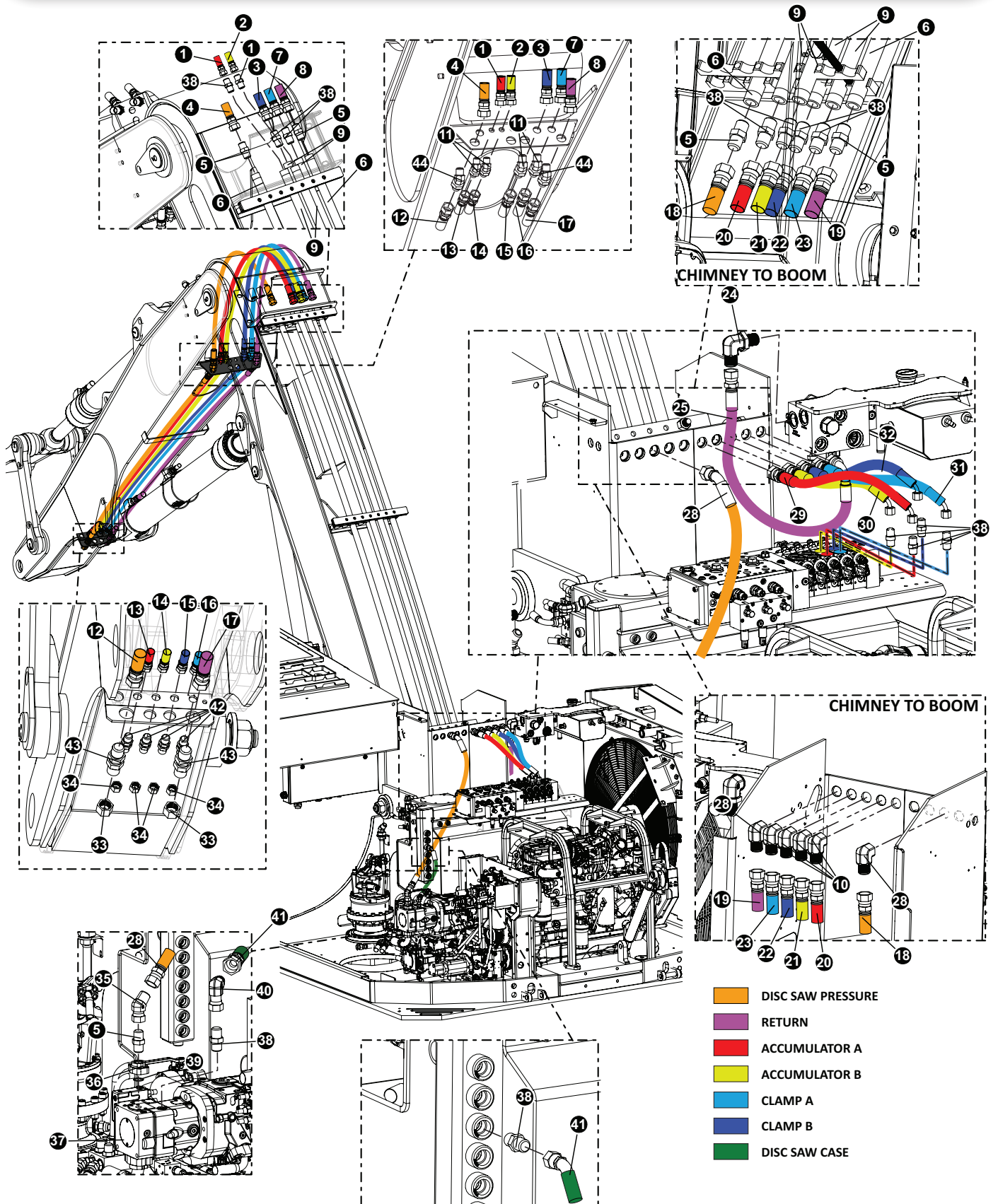
 See referenced page for component or assembly breakdown.

 Bulk material - order length required in feet or meters.

 Kit or Assembly - includes all items indented underneath.

FELLER BUNCHER HYDRAULICS ASSEMBLY, AND INSTALLATION

DISC SAW AND ATTRIBUTING HYDRAULIC LINES



FELLER BUNCHER HYDRAULICS ASSEMBLY, AND INSTALLATION

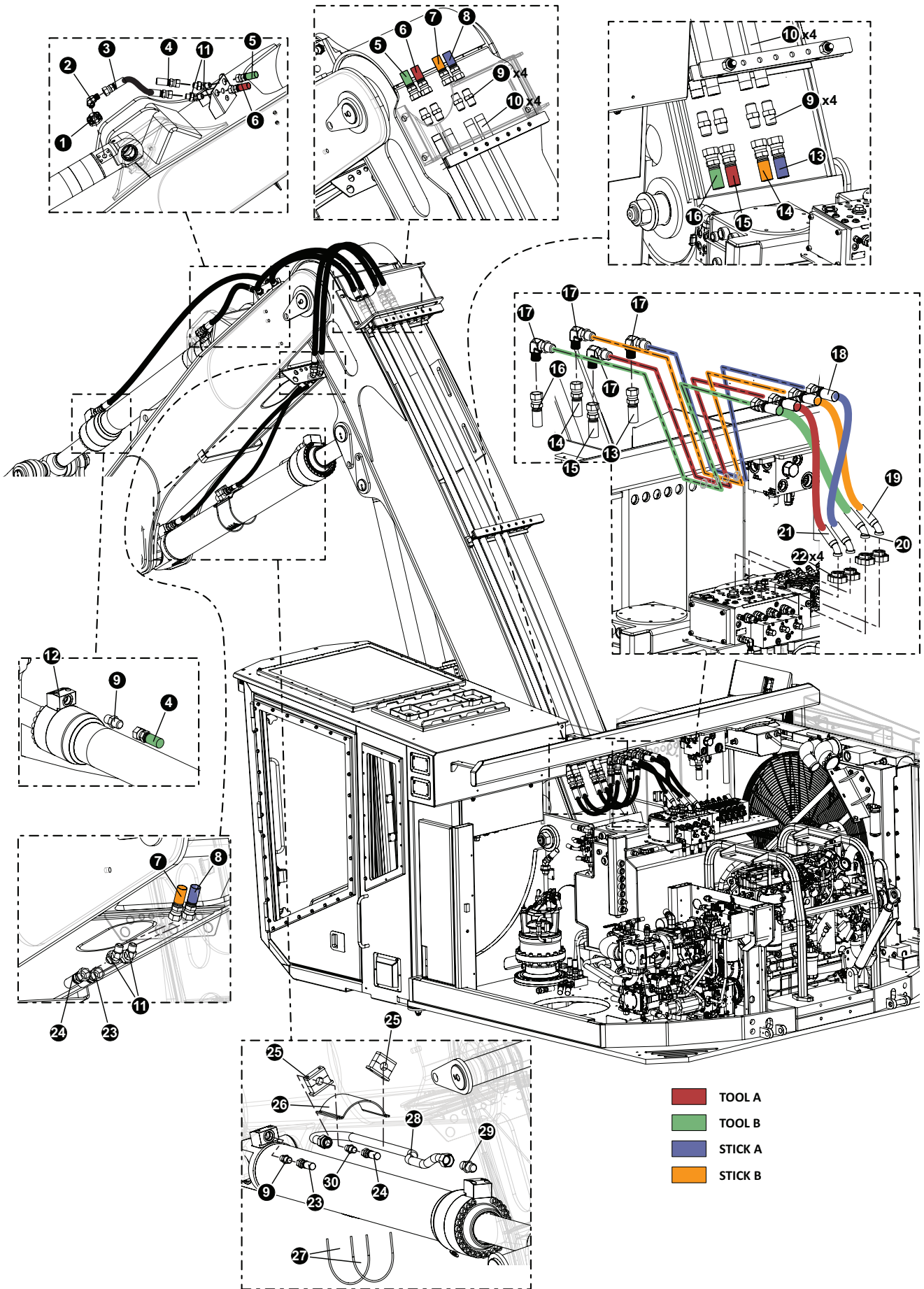
DISC SAW AND ATTRIBUTING HYDRAULIC LINES

REF	PART #	QTY	DESCRIPTION	SEE SECTION
1	57683	1	HOSE ASSEMBLY - 722TC72 12-12OS-12OS-SW (ACCUM. A MAIN TO STICK)	
2	57683	1	HOSE ASSEMBLY - 722TC72 12-12OS-12OS-SW (ACCUM. A MAIN TO STICK)	
3	57683	1	HOSE ASSEMBLY - 722TC71 12-12OS-12OS-SW (CLAMP B MAIN TO STICK)	
4	57683	1	HOSE ASSEMBLY - 722TC69 16-16OS-16OS-SW (DISC SUPPLY MAIN TO STICK)	
5	16851	6	CONNECTOR, STR - FF1852T-1210S	
6	48306	2	TUBELINE, BENT - 1" x 132"	
7	57683	1	HOSE ASSEMBLY - 722TC71 12-12OS-12OS-SW (CLAMP A MAIN TO STICK)	
8	57683	1	HOSE ASSEMBLY - 722TC69 16-16OS-16OS-SW (DISC RET MAIN TO STICK)	
9	48307	2	TUBELINE, BENT - .75" X 130"	
10	53680	6	FITTING, BULKHEAD UNION ELBOW 16 WELO-WN	
11	55509	4	FITTING, BULKHEAD UNION - 45 DEGREE #12	
12	57683	1	HOSE ASSEMBLY - 787TC97 16-16OS-16OS-SW (STICK BOOM BH - BH)	
13	57683	1	HOSE ASSEMBLY - 722TC98 12-12OS-12OS-SW (ACCUM. A BH - BH)	
14	57683	1	HOSE ASSEMBLY - 722TC98 12-12OS-12OS-SW (ACCUM. B BH - BH)	
15	57683	1	HOSE ASSEMBLY - 722TC98 12-12OS-12OS-SW (CLAMP B BH - BH)	
16	57683	1	HOSE ASSEMBLY - 722TC98 12-12OS-12OS-SW (CLAMP A BH - BH)	
17	57683	1	HOSE ASSEMBLY - 387TC97 16-16OS-16OS-SW (DISC RETURN BH - BH)	
18	58239	1	HOSE ASSEMBLY - 722TC 44 16-16OS-16OS-SW (DS PRESSURE - MAIN BOOM)	
19	58239	1	HOSE ASSEMBLY - 722TC 44 16-16OS-16OS-SW (DS RETURN - MAIN BOOM)	
20	58239	1	HOSE ASSEMBLY - 722TC 44 12-12OS-16OS-SW (ACCUM A - MAIN BOOM)	
21	58239	1	HOSE ASSEMBLY - 722TC 44 12-12OS-16OS-SW (ACCUM B - MAIN BOOM)	
22	58239	1	HOSE ASSEMBLY - 722TC 44 12-12OS-16OS-SW (CLAMP B - MAIN BOOM)	
23	58239	1	HOSE ASSEMBLY - 722TC 44 12-12OS-16OS-SW (CLAMP A - MAIN BOOM)	
24	53680	1	FITTING, BULKHEAD UNION ELBOW 16 WELO-WN	
25	58239	1	HOSE ASSEMBLY - 187TC28.5 16-16OS-16O9 (DISC RETURN CHIMNEY TO BLUE BLOCK)	
28	58239	1	HOSE ASSEMBLY - 787TC72 16-16OS-16O4 (DS PRESSURE TO CHIMNEY)	
29	58239	1	HOSE ASSEMBLY - 722TC24.5 12-12O4-16OS (ACCUM. A TO CHIMNEY)	
30	58239	1	HOSE ASSEMBLY - 722TC27 12-12O4-16OS (ACCUM. B TO CHIMNEY)	
31	58239	1	HOSE ASSEMBLY - 722TC27 12-12O4-16OS (CLAMP A TO CHIMNEY)	
32	58239	1	HOSE ASSEMBLY - 722TC24.5 12-12O4-16OS (CLAMP B TO CHIMNEY)	
33	15436	2	CAP - FF9863-16S	
34	15437	4	CAP - FF9863-12S	
35	52441	1	ELBOW, 45 SWIVEL NUT	
36	15113	1	KIT, SPLIT FLANGE - 1" (CODE 62)	
37	(Click Here)	1	DISC SAW PUMP	UP-1
38	15152	12	CONNECTOR, STR - FF1852T-1212S	
39	15377	1	O-RING - 1" SF (CODE 61/62)	
40	17670	1	ELBOW, 90 SWIVEL - FF2098T-1212S	
41	58179	1	HOSE ASSEMBLY - 187TC52.5 12-12OS-12O4 (DS PUMP TO TANK)	
42	19754	4	CONNECTOR, STR BULKHEAD - 12 WLO-WLNL-S	
43	53680	2	FITTING, BULKHEAD UNION ELBOW 16 WELO-WN	
44	54316	2	ELBOW, BULKHEAD UNION 45DEG #16	

See referenced page for component or assembly breakdown.

Bulk material - order length required in feet or meters.

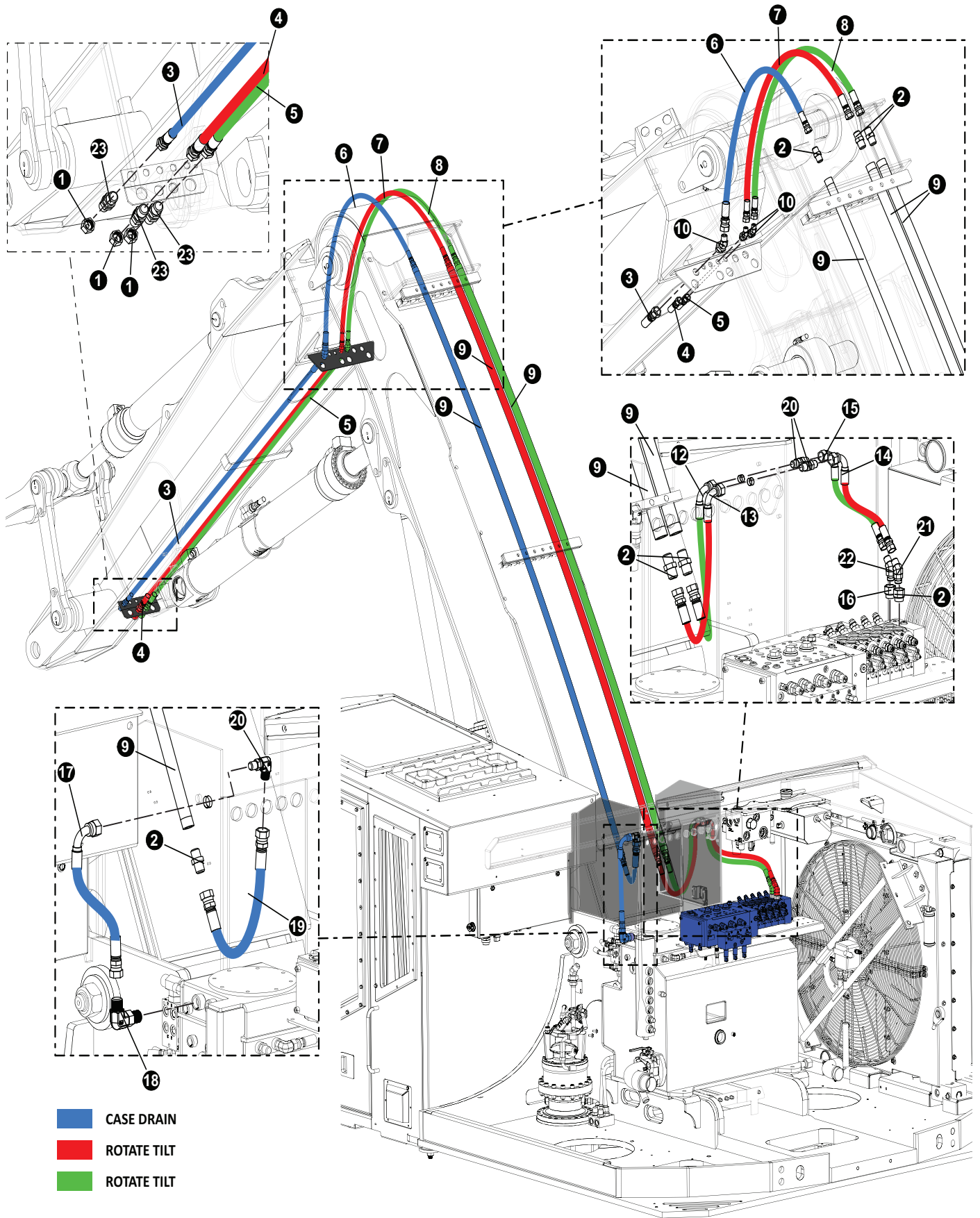
Kit or Assembly - includes all items indented underneath.



FELLER BUNCHER HYDRAULICS ASSEMBLY, AND INSTALLATION

STICK BOOM AND TOOL CYLINDER HYDRAULICS

REF	PART #	QTY	DESCRIPTION	SEE SECTION
1	15113	1	KIT, SPLIT FLANGE - 1" (CODE 62)	
2	15228	1	ELBOW, 90 - FF1868T-1616S	
3	57683	1	HOSE ASSEMBLY - 722TC26 16-16OS-16O4-SW (TOOL BASE TO BH)	
4	57683	1	HOSE ASSEMBLY - 722TC83 16-16OS-16OS-SW (TOOL ROD TO BH)	
5	57683	1	HOSE ASSEMBLY - 722TC65 16-16OS-16O4-SW (TOOL B MAIN TO STICK)	
6	57683	1	HOSE ASSEMBLY - 722TC64 16-16OS-16O4-SW (TOOL A MAIN TO STICK)	
7	57683	1	HOSE ASSEMBLY - 722TC69 16-16OS-16OS-SW (STICK B MAIN TO STICK)	
8	57683	1	HOSE ASSEMBLY - 722TC69 16-16OS-16OS-SW (STICK A MAIN TO STICK)	
9	15225	10	CONNECTOR, STR - FF1852T-1616S	
10	48306	4	TUBELINE, BENT - 1" x 132"	
11	54316	2	ELBOW, BULKHEAD UNION 45DEG #16	
12	57601	1	FLANGE, BLOCK ELBOW W184-16-16U CODE 62	
13	58239	1	HOSE ASSEMBLY - 722TC 44 16-16OS-16OS-SW (STICK A - MAIN BOOM)	
14	58239	1	HOSE ASSEMBLY - 722TC 44 16-16OS-16OS-SW (STICK A - MAIN BOOM)	
15	57683	1	HOSE ASSEMBLY - 787TC 44 16-16OS-16OS-SW (TOOL A - MAIN BOOM)	
16	57683	1	HOSE ASSEMBLY - 787TC 44 16-16OS-16OS-SW (TOOL B - MAIN BOOM)	
17	53680	4	FITTING, BULKHEAD UNION ELBOW 16 WELO-WN	
18	58239	1	HOSE ASSEMBLY - 722TC 22 16-16OS-PH4 (STICK A TO CHIMNEY)	
19	58239	1	HOSE ASSEMBLY - 722TC 28.5 16-16OS-PH4 (STICK B TO CHIMNEY)	
20	58239	1	HOSE ASSEMBLY - 722TC 29.5 16-16OS-PH4 (TOOL B TO CHIMNEY)	
21	58239	1	HOSE ASSEMBLY - 722TC 23.5 16-16OS-PH4 (TOOL A TO CHIMNEY)	
22	15113	1	KIT, SPLIT FLANGE - 1" (CODE 62)	
23	57683	1	HOSE ASSEMBLY - 722TC 76 16-16OS-16OS-SW (STICK A TO BH)	
24	57683	1	HOSE ASSEMBLY - 722TC 48 16-16OS-16OS-SW (STICK B TO BH)	
25	52372	2	CLAMP, STEEL TUBELINES(WHEEL DRIVE)SMALL	
26	48481	1	ADJUSTABLE CYLINDER HOSE PLATE	
27	48689	2	U-BOLT - 8.13 X 7 X.25	
28	57520	1	TUBELINE, STICK BOOM CYLINDER	
29	17063	1	CONNECTOR, STR - FF1852T-2016S	
30	20455	1	CONNECTOR, REDUCER - ORS FF2281T-1620S	



FELLER BUNCHER HYDRAULICS ASSEMBLY, AND INSTALLATION

CASE DRAIN AND ROTATE HYDRAULICS

REF	PART #	QTY	DESCRIPTION	SEE SECTION
1	15437	3	CAP - FF9863-12S	
2	15152	7	CONNECTOR, STR - FF1852T-1212S	
3	57683	1	HOSE ASSEMBLY - 722TC98 12-12OS-12OS-SW (CASE BH TO BH)	
4	57683	1	HOSE ASSEMBLY - 722TC98 12-12OS-12OS-SW (ROTATE BH TO BH)	
5	57683	1	HOSE ASSEMBLY - 722TC98 12-12OS-12OS-SW (ROTATE BH TO BH)	
6	57683	1	HOSE ASSEMBLY - 722TC73 12-12OS-12-12OS-SW (CASE MAIN TO STICK)	
7	57683	1	HOSE ASSEMBLY - 722TC74 12-12OS-12-12OS-SW (ROTATE MAIN TO STICK)	
8	57683	1	HOSE ASSEMBLY - 722TC74 12-12OS-12-12OS-SW (ROTATE MAIN TO STICK)	
9	48307	3	TUBELINE, BENT - .75" X 130"	
10	55509	3	FITTING, BULKHEAD UNION - 45 DEGREE #12	
12	57683	1	HOSE ASSEMBLY - 722TC44 12-12OS-12O9 (ROTATE VALVE TO CHIMNEY)	
13	57683	1	HOSE ASSEMBLY - 722TC44 12-12OS-12O9 (ROTATE VALVE TO CHIMNEY)	
14	57683	1	HOSE ASSEMBLY - 722TC44 12-12OS-12O9 (ROTATE TO CHIMNEY)	
15	57683	1	HOSE ASSEMBLY - 722TC43 12-12OS-12O9 (ROTATE TO CHIMNEY)	
16	25040	1	BUSHING, REDUCER - 6410-16-12	
17	58239	1	HOSE ASSEMBLY - 187TC 22.5 12-12OS-12O9 (BOOM CASE TO TANK)	
18	17688	1	ELBOW, 90 - FF1868T-1212S	
19	(See Description)	1	HOSE ASSEMBLY - 287TC44-12OS-12OS-SW (ROTATE TO CHIMNEY)	
20	24188	3	ELBOW, 90 BULKHEAD - 855BH-TT-12	
21	19592	1	ELBOW, 45 SWIVEL - FF2133T-1212S	
22	19127	1	ELBOW, 45 - FF2068T-1212S	
23	19754	3	CONNECTOR, STR BULKHEAD - 12 WLO-WLNL-S	

PAGE INTENTIONALLY LEFT BLANK