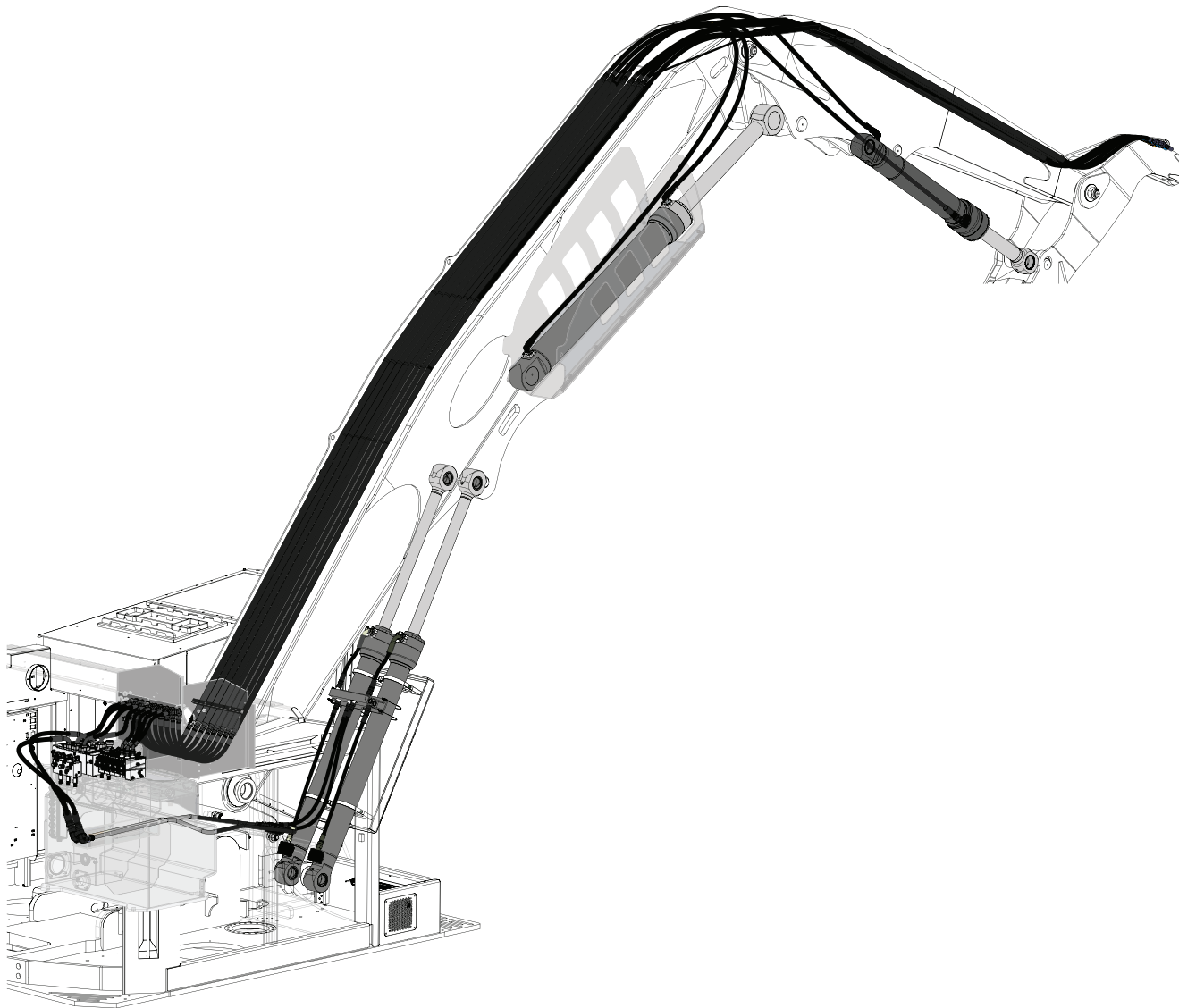
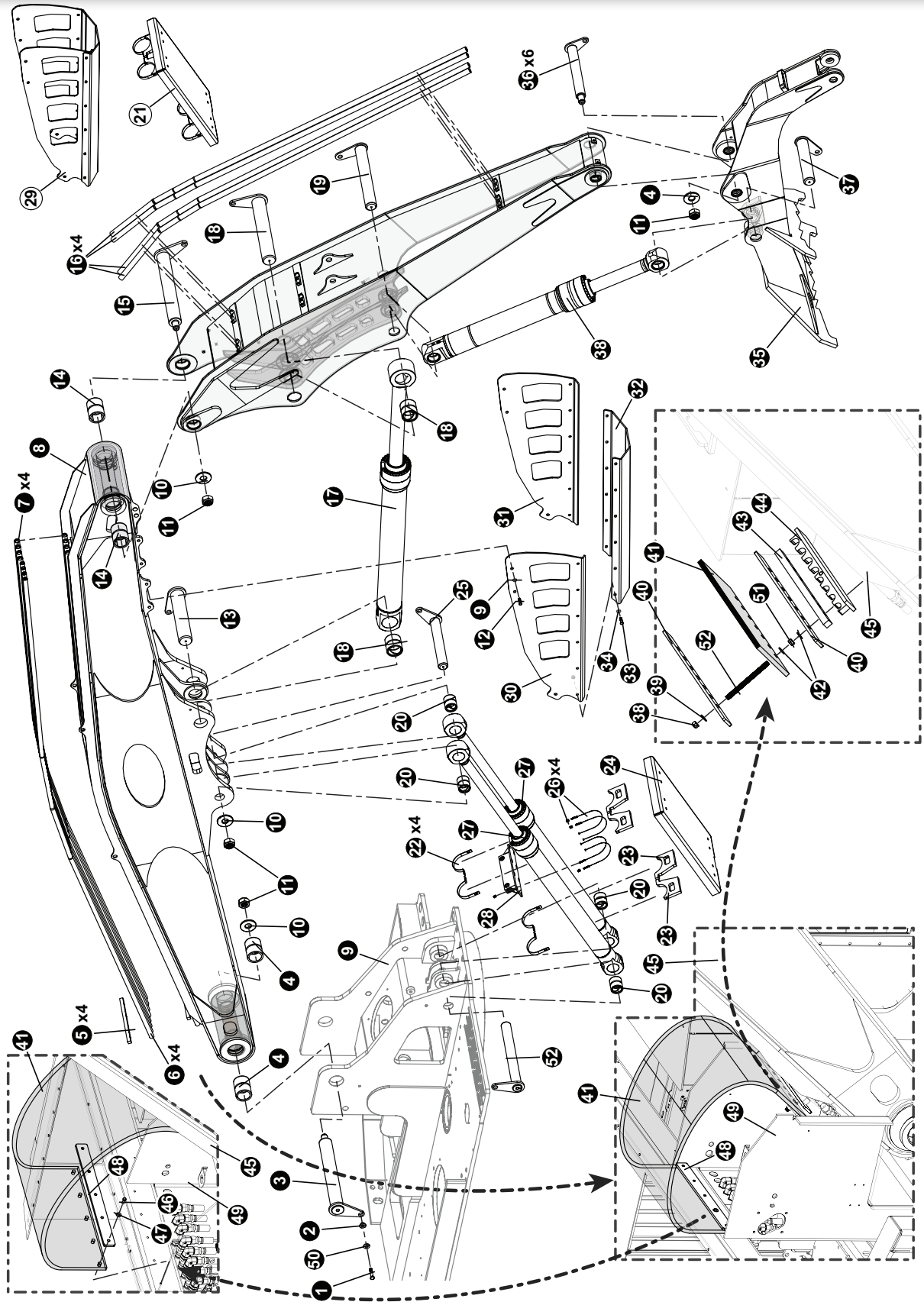


SECTION SLB-1 SHOVEL LOGGER BOOM ASSEMBLY AND INSTALLATION



SHOVEL BOOM ASSEMBLY AND INSTALLATION

SHOVEL BOOM MAIN AND STICK ASSEMBLY



SHOVEL BOOM ASSEMBLY AND INSTALLATION

SHOVEL BOOM MAIN AND STICK ASSEMBLY

REF	PART #	QTY	DESCRIPTION	SEE SECTION
1	10841	9	CLAMP, SADDLE TOP - LL	
2	18570	9	WASHER, PIN RETAINING (BRAATZ)	
3	48473	1	PIN, MAIN BOOM TO UPPER	
4	48928	2	BUSHING, 5.00" OD x 4.00" ID X 5.00" L	
5	62507	4	CLAMP, SADDLE - TOP	
6	62603	4	TUBELINE, SHOVEL-LOGGER .75" X 219.0"	
7	62602	4	TUBELINE, SHOVEL-LOGGER 1.0" X 219.0"	
8	62225	1	WELDMENT, MAIN BOOM SHOVEL - TL775	
9	(Click Here)	1	Upper Turntable	UP-1
10	60758	4	WASHER, BURNED - HARDENED-MAIN BOOM PIN	
11	10728	4	NUT, NYLOCK - 2" (ZINC PLATED)	
12			BOLT	
13	48533	1	PIN, STICK CYL CYLINDER - TL765	
14	48928	8	BUSHING, 5.00" OD x 4.00" ID X 5.00" L	
15	48473	1	PIN, MAIN BOOM TO UPPER	
16	62636	1	TUBELINE, LL STICK 1.0" X 111.0"	
17	(Click Here)	1	CYLINDER, STICK - TL765 (6.5 INCH DIA).....	SB-2
18	(See Description)	2	Stick Cylinder Bushing (Hydradyne Part # BB425500)	
19	62429	1	PIN ASSY, 90MM X 25.50 - STK CYL MAIN	
20	(See Description)	4	Bushing, Cylinder (Hydradyne Part # BB300400)	
21	62585	1	ASSY, LOWER CYL GUARD - SL	
22	62584	1	PLATE, CYLINDER STRAP - SHOVEL MAIN	
23	62579	4	PLATE, CYLINDER CLAMP - GAURD SHOVEL	
24	62577	1	PLATE, MAIN CYL GUARD - SHOVEL 775D	
25	48532	1	PIN, MAIN CYL BASE END	
26	57748	4	CABLE, CYLINDER - 19" - 765	
27	(Click Here)	1	CYLINDER, STICK - TL765 (6.5 INCH DIA).....	SB-2
28	48391	1	MANIFOLD, MAIN BOOM - TL765	
29	62595	1	GUARD, ASSY CYL STICK - SHOVEL 775	
30	62597	1	PLATE, CYL GUARD -RH STICK SHOVEL	
31	62598	1	PLATE, CYL GUARD -LH STICK SHOVEL	
32	62596	1	PLATE, CYLINDER BASE -STICK SHOVEL	
33			BOLT	
34			WASHER	
35	62291	1	WELDMENT, SHOVEL HEEL - LEVELING	
36	62427	1	WELDMENT, 3.0 X 21.00 PIN ASSY	
37	62431	1	PIN ASSY, 90MM X 17.19	
38	15563	7	NUT, nylock - 5/8"	
39	10771	7	WASHER, SAE flat - 5/8"	
40	48663	1	BAR, DEBRIS FLAP HOLD-DOWN	
41	48661	1	RUBBER, DEBRIS FLAP- TAIL SWING	
42	10805	2	WASHER, FLAT - .625"	
43	62507	1	CLAMP, SADDLE - TOP	
44	62504	1	CLAMP, SADDLE - SHOVEL	
45	(Click Here)	1	WELDMENT, MAIN BOOM SHOVEL - TL775.....	SB-2
46	10402	5	BOLT - .375" X 1.25"	
47	10802	5	WASHER, FLAT - .5"	
48	48662	1	BAR, DEBRIS FLAP HOLD DOWN	
49	(Click Here)	1	CHIMNEY - TAIL SWING.....	SB-2
50	15550	1	WASHER, SAE FLAT - .75"	
51	15563	4	NUT, NYLOCK - .625"	
52	48530	1	PIN, MAIN BOOM CYL BASE TO UPPER	

SHOVEL BOOM ASSEMBLY AND INSTALLATION

SHOVEL BOOM STICK BOOM CYLINDER

REV.	DESCRIPTION	DATE	APPROVED
P	TIMBERPRO AT REV. A	07/14/15	

SECTION A-A

APPLY BLACK GREASE TO FACE OF PISTON RING AND SPRING RING. TIGHTEN THREAD LOCKER TO NUT AND HAND TORQUE TO 600 FT.LBS. OILING AND ROD. ROTATE NUT THRU 70°

HYDRA DYNE	
CYLINDER ASSEMBLY	
SIZE	Ø 6 1/2" BORE, Ø 110mm ROD, 54" STROKE
DATE	06/10/2015
DWG NO.	55464
REV.	P

STANDARD TOLERANCES

FRACTIONS: .001, .002, .005, .010, .015, .030, .050, .100

ALL ANGLES: .125"

ALL MACHINED SURFACES: .0015, .0025, .0050, .0100, .0150, .0300, .0500, .1000

ALL UNFINISHED SURFACES: .0015, .0025, .0050, .0100, .0150, .0300, .0500, .1000

MACHINE STANDARD

MATERIAL: SEE BILL OF MATERIAL

MASS: 772.653 lbs
DENSITY: 0.283 lbf/in³

DETAIL B

SCALE: 1:1

CUSTOMER APPROVAL

SIGNATURE: _____

PRINT NAME: _____

DATE: _____

CYLINDER ENGINEERING SPECIFICATIONS

- COLOUR: BLACK, 50% GLOSS
- MAX PRESSURE RATING: 5000 psi
- EXTEND AREA: 33.2 in²
- MAX EXTEND LOAD: 165,900 lbf
- MECH. GLAND RETENTION RATING: 92,200 lbf
- MECH. PISTON/NUT JOINT RATING: 183,000 lbf (M16 SHCS)
- 182,600 lbf

ITEM NO.	QTY.	PART NUMBER	DESCRIPTION	TORQUE
14	1	SK-65011000	SEAL KIT	
13	2	BALL M6	STEEL BALL 6mm	
12	2	SHSS05-180-250	SET SCREW .5/16"-18UNC X 1/4"LG	18 FT.LBS
11	1	WH-511	SPIRAL SNAP RING	
10	1	WHM-475	SPIRAL SNAP RING	
9	25	SHCS M16X100	SHCS METRIC G129	173 FT.LBS (PER G10.9)
8	2	BB-425500	BUSHING	
7	1	LNUT M90	ALL METAL LOCKNUT M90-2 GH	SEE NOTE
6	1	TP-650117	CUSHION SLEEVE	
5	1	TP-650110	BACK PISTON	
4	1	TP-650109	FRONT PISTON	
3	1	TP-650108	GLAND MACHINING	
2	1	TP-650105	FINAL ROD MACHINING	
1	1	TP-650100	BARREL WELDMENT	

X:\PROJECTS\2015 Product\TP-15-582 (Hydra) Cylinder\Timberpro 755\55464 Stick Boom Cylinder\Cylinder Customer Drawn\55464

55464 SHEET 1 OF 1

SHOVEL BOOM ASSEMBLY AND INSTALLATION

SHOVEL BOOM HEEL BOOM CYLINDER

62295

BARREL SERVICE PART INCLUDES:
 BARREL WELDMENT
 FITTINGS
 BUSHING/BEARING
 VALVES
 PLUGS
 ANY SMALL COMPONENTS

ROD SERVICE PART INCLUDES:
 ROD WELDMENT
 FITTINGS
 BUSHING/BEARING

SEALKIT SERVICE PART INCLUDES:
 SEALIT
 ANY SNAP RINGS

GLAND SERVICE PART INCLUDES:
 GLAND MACHINING
 ANY SNAP RINGS
 ANY SMALL COMPONENTS

• ALL OTHER COMPONENTS ARE SOLD AS INDIVIDUAL SERVICE PARTS

ITEM	QTY	PART NUMBER	DESCRIPTION	TORQUE
24	1	SKM15010002	SEAL KIT	
23	1	HD002096	HIGH PRESSURE SPOOL, SHORT STEM	
22	8	0128995	DISC SPRING, .500"OD X .25"TD	
21	1	0129755	DISC SPRING, .997"OD X .24"TD	
20	1	HD002098	PLUG, RELIEF THREADED, SAE#4 ORB PORT	30 FT - LBS
19	1	DNH-112	SPIRAL SNAP RING	
18	1	WHA-475	SPIRAL SNAP RING	
17	1	393030020	PRESSURE RELIEF W/ANTICAV 420 BAR (6090 PSI)	48 FT-LBS
16	2	GR65E-1/8 STR	GR65E FITTING, 1/8" NPT	12 FT - LBS MAX
15	1	TL-C5-190-30	TEMPERATURE LABEL	
14	1	N1470-112	ORING, 70 DIAMETER 0.500" X 0.488" X 0.094" C/S	
13	1	SHSS M16 X 1.6	SET SCREW	
12	21	HD002049	M16 FLAT WASHER	
11	21	SHCS M16 X 90	SHCS METRIC G12.9	173 FT-LBS PER G10.91
10	2	BALL M6	STEEL BALL 6mm	
9	2	SHSS 05-18x2-250	SET SCREW, 5/16"-18UNC X 1/4 LG	
8	2	98A090100	BUSHING	
7	1	TM150117	CUSHION STEVE	
6	1	TM150110	ALL METAL LOCKNUT M7.5-2-4H	SEE NOTE
5	1	TM150109	BACK PISTON	
4	1	TM150108	FRONT PISTON	
3	1	TPM150405	GLAND MACHINING	
2	1	TPM150405	FINAL ROD MACHINING	
1	1	TPM150400	BARREL FINAL WELDMENT	

STANDARD DIMENSIONS UNLESS OTHERWISE NOTED

UNLESS OTHERWISE NOTED ALL DIMENSIONS ARE IN INCHES

PRODUCT VERIFICATION MUST BE CONDUCTED AS SPECIFIED IN THE DRAWING

MATERIAL:
SEE BILL OF MATERIAL

HEEL CYLINDER ASSEMBLY

Ø 150mm BORE Ø 100mm ROD, 40.00" STROKE

HYDRA DYNE HYDRAULIC TECHNOLOGY INC.

36 SERRANO GLENVIEW DRIVE, SUITE 100, SAN ANTONIO, TEXAS 78217

DATE: 2020-07-16
 DWG NO: 62295

SCALE: 1:6.5
 SHEET: 2 OF 2