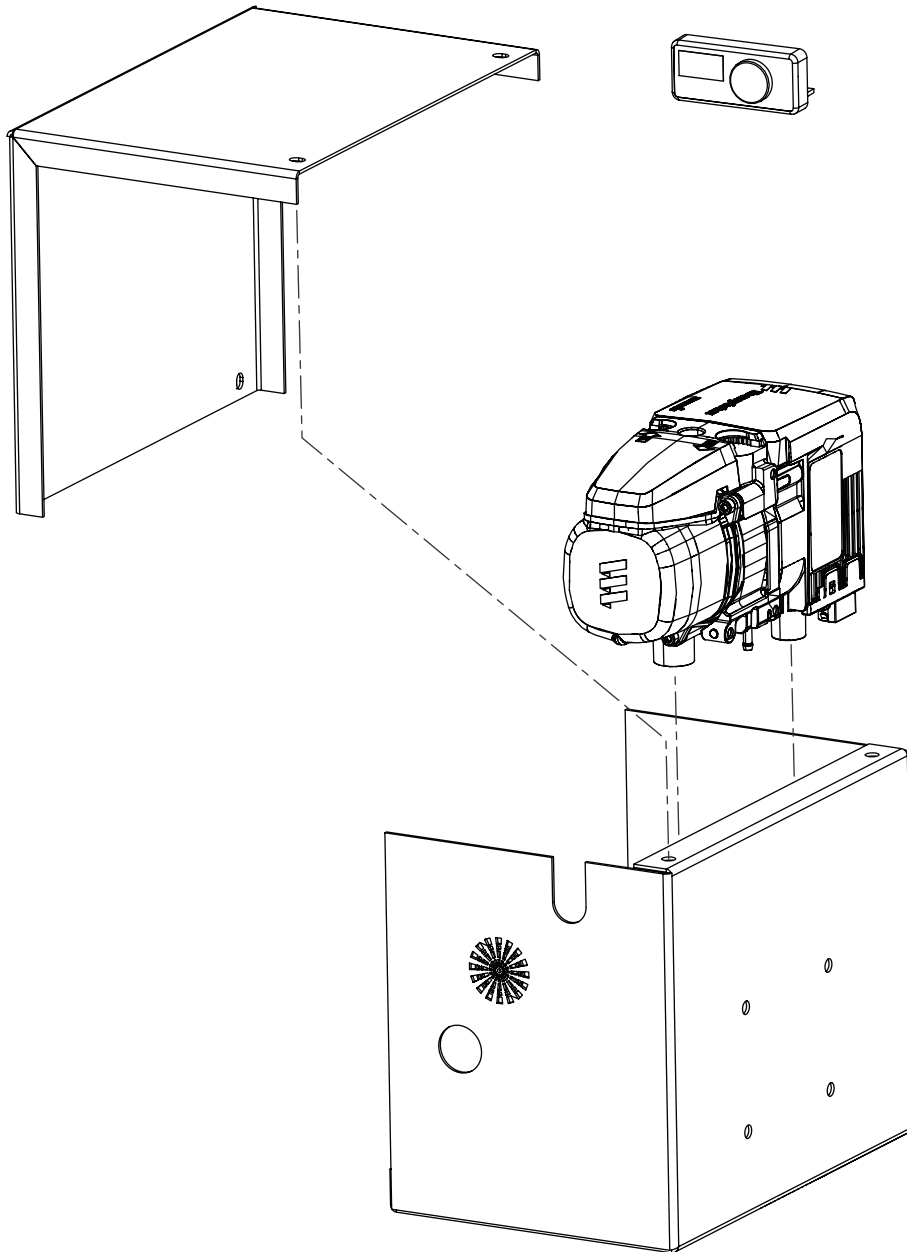
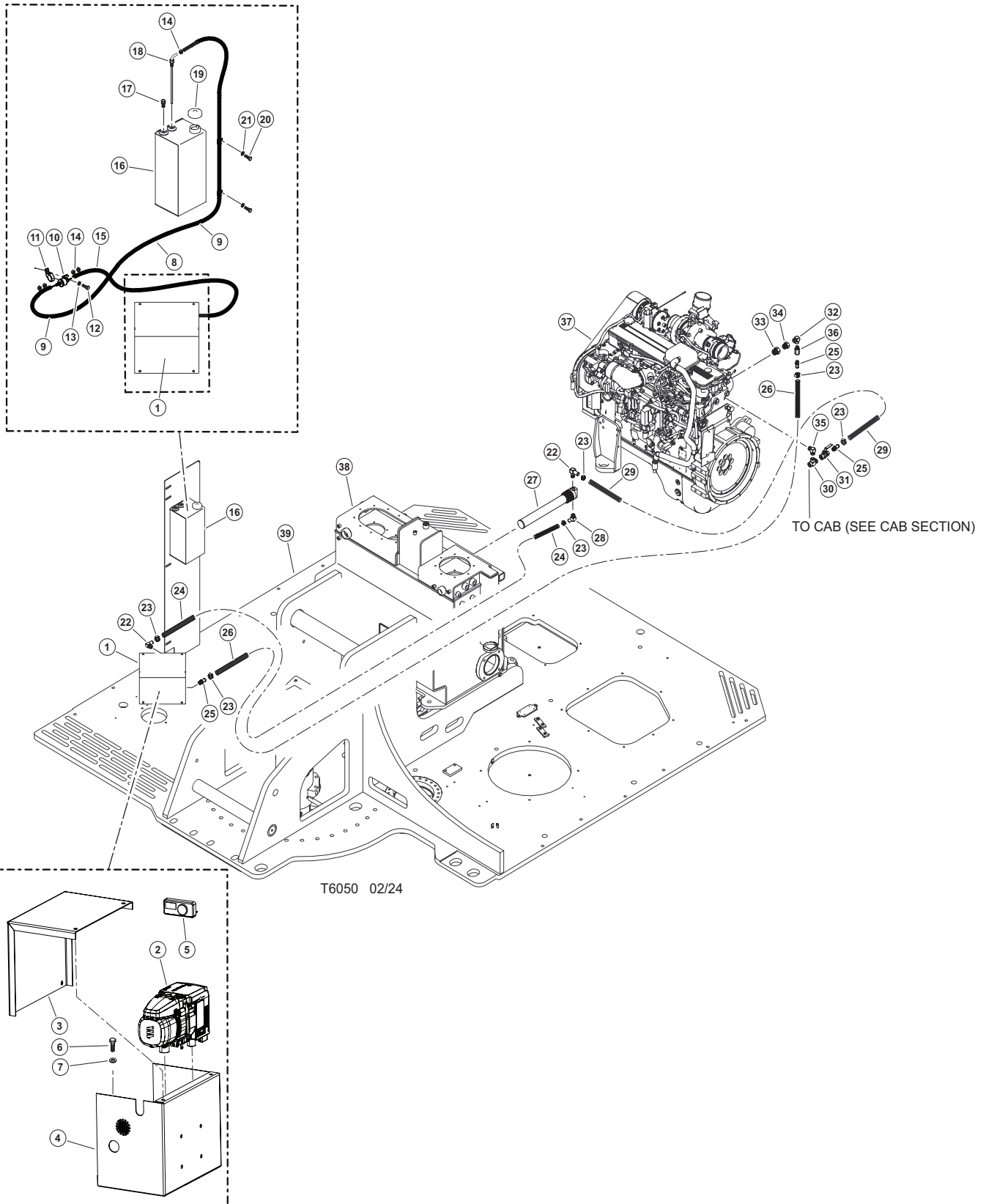


# SECTION OH-1

## ESPAR HEATER SYSTEM



# ESPAR HEATER SYSTEM COMPONENT INSTALLATION

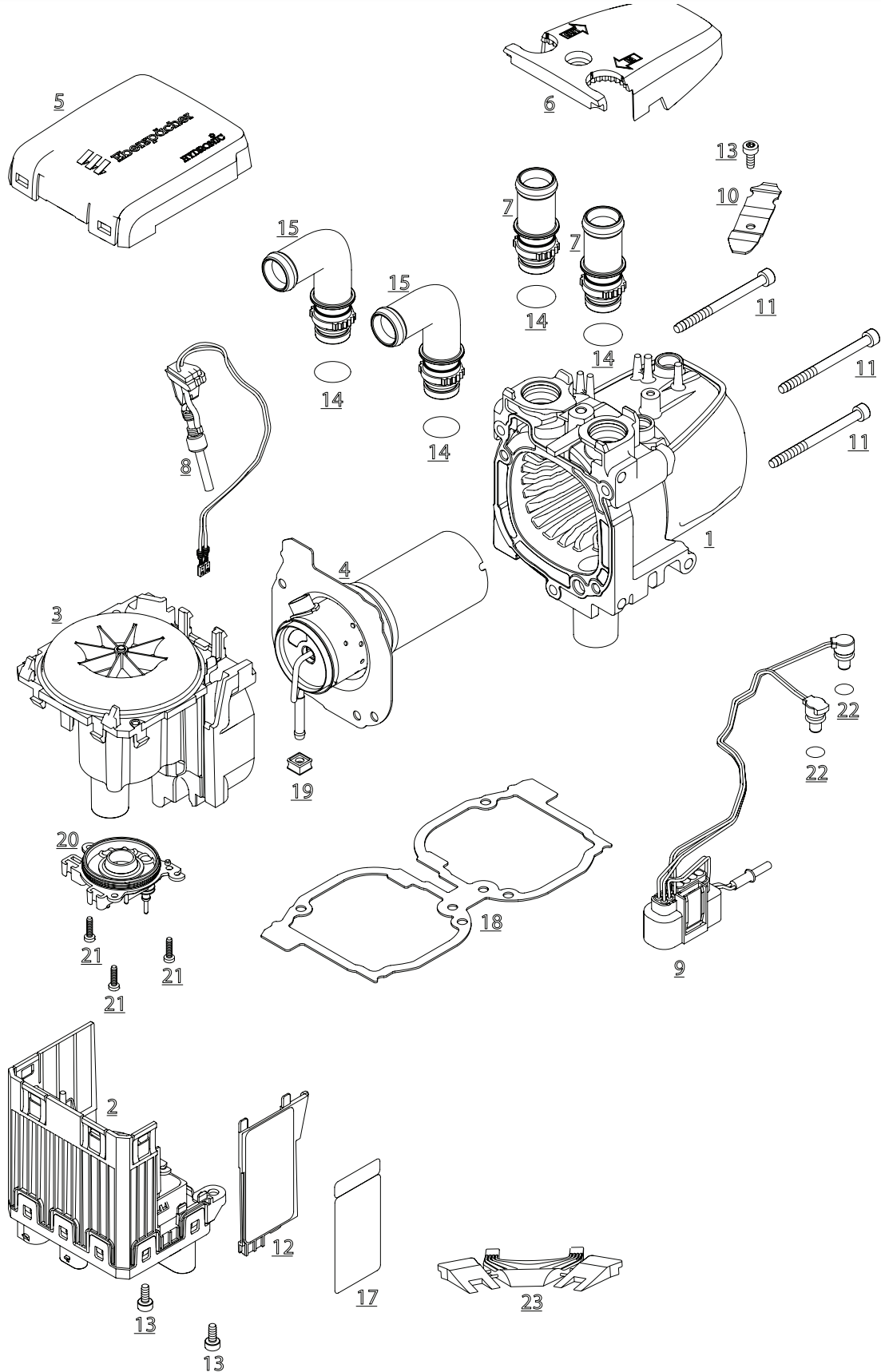


# ESPAR HEATER SYSTEM COMPONENT INSTALLATION

REF	PART #	QTY	DESCRIPTION	SEE SECTION
1	61249	1	KIT, ESPAR PRE-HEATER SYSTEM	
2	(SEE PAGE)	1	HEATER UNIT	OH-1-3
3	60727	1	HYDRONIC BOX LID	
4	60726	1	HYDRONIC BOX BASE	
5	(SEE PAGE)	1	CONTROL/TIMER	OH-1-7
6	15589	2	BOLT - .3125" X 1"	
7	10801	2	WASHER, FLAT - .3125"	
8	(SEE DESCRIPTION)	AR	FUEL HOSE - 2mm	
9	17450	AR	SPLIT LOOM - .3875"	
10	(SEE PAGE)	1	FUEL METERING PUMP	OH-1-5
11	(SEE PAGE)	1	FUEL METERING PUMP HOLDER	OH-1-5
12	15604	1	BOLT - .25" X .75"	
13	10757	1	WASHER, SAE FLAT - .25"	
14	(SEE DESCRIPTION)	6	HOSE CLAMP - 9mm (10 2068 00 90 98)	
15	(SEE DESCRIPTION)	AR	FUEL HOSE - 3.5mm	
16	46673	1	TANK, ESPAR FUEL	
17	22906	1	BREATHER, FUEL VENT	
18	(SEE DESCRIPTION)		FUEL SUCTION TUBE	
		1	COMPRESSION FITTING 3/8" NPT (552 0002)	
		1	STRAIT PICKUP TUBE (20 2900 20 20 02)	
19	52965	1	CAP, ESPAR FUEL TANK	
20	15529	2	BOLT - .375" X 2"	
21	10802	2	WASHER, FLAT - .375"	
22	52436	2	ELBOW, 90 BEADED HOSE BARB 10-8	
23	16256	6	CLAMP, HOSE - WORM STYLE - 7/8"	
24	16717	AR	HOSE, HEATER - (BULK ROLL) .625" (ESPAR HEATER TO HYD. TANK ELEMENT)	
25	51774	2	NIPPLE, KING - 1/2" NPT X 5/8" HOSE	
26	16717	AR	HOSE, HEATER - (BULK ROLL) .625" (ESPAR HEATER TO ENGINE)	
27	51614	1	HEATER, ELEMENT 16" HYD TANK	
28	57805	1	FITTING, 179HB-10-8	
29	16717	AR	HOSE, HEATER - (BULK ROLL) .625" (ENGINE TO HYD. TANK ELEMENT)	
30	51879	1	TEE, RUN - .5" (1/2 MRO-S)	
31	51714	1	VALVE, BALL - WATER SHUT OFF HEATER 1/2"	
32	52786	1	ELBOW, 90° STREET - 1/2 X 3/8 CD-S	
33	M27-12F8OHG5S	1	BUSHING, REDUCER - 27-12	
34	51780	1	BUSHING, REDUCER - 12-1/2	
35	52785	1	ELBOW, MALE PIPE - 3/4 X 1/2 CR-S	
36	15652	1	VALVE, CHECK - HYDRAULIC/FUEL	
37	(SEE PAGE)	1	ENGINE, CUMMINS	EE-1-1
38	(SEE PAGE)	1	HYDRAULIC OIL TANK WELDMENT	UP-2-5
39	(SEE PAGE)	1	UPPER TURNTABLE WELDMENT	UP1-1

# ESPAR HEATER SYSTEM

## HEATER UNIT COMPONENTS



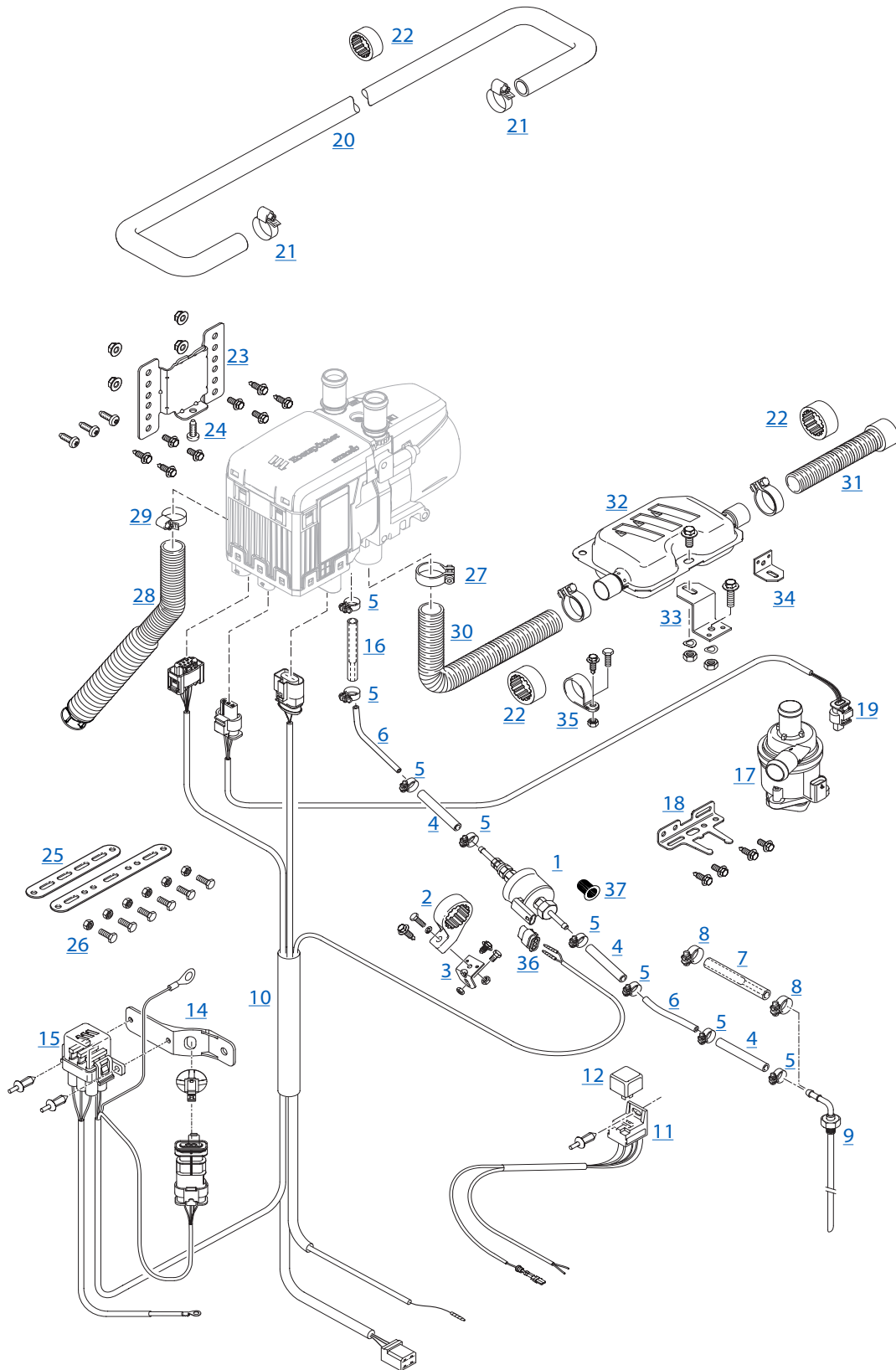
# ESPAR HEATER SYSTEM

## HEATER UNIT COMPONENTS

REF	PART #	QTY	DESCRIPTION	SEE SECTION
-	61249	1	PREHEATER, ESPAR - NEW STYLE	
1	(See Description)	1	Jacket and heat exchanger (Supplier Part # 25.2651.01.010)	
2	(See Description)	1	Kit – control box (Supplier Part # 20.2007.99.5000) (Includes: Item 2, 13, 17, & 20)	
3	(See Description)	1	Blower (Supplier Part # 25.2652.16.0000)	
4	(See Description)	1	Combustion chamber (Supplier Part # 20.1952.99.1100) (Includes: Item 4, 18, & 19)	
5	(See Description)	1	Cover, blower (Supplier Part # 25.2652.01.0003)	
6	(See Description)	1	Cover, sensor (Supplier Part # 25.2652.99.0112) (Includes: Item 16)	
7	(See Description)	1	Water connection socket 20, straight (Supplier Part # 25.2652.99.0501) (Includes: Item 7, & 14)	
8	(See Description)	1	Glow plug (Supplier Part # 25.2652.99.0109) (Includes: Item 8, 13, 20, & 21)	
9	(See Description)	1	Heater lead harness (Supplier Part # 25.2652.99.0102) (Includes: Item 9, 13, 20, & 21)	
10	(See Description)	1	FUEL METERING PUMP (Supplier Part # 25 1942 45 00 00) (Includes: Item 10, 13)	
11	(See Description)	1	Screw, M5 × 65 thread forming, DIN 7500-EE (Supplier Part # 25.2652.01.0014)	
12	(See Description)	1	Cover, electric motor (Supplier Part # 25.2652.01.0004)	
14	(See Description)	1	O-ring, 16 x 2 (Supplier Part # 22.1000.70.0019)	
15	(See Description)	1	Water connection socket 20, angled (Supplier Part # 25.2652.99.8001)	
16	(See Description)	1	Screw, M5 × 18 thread forming, DIN 7500-CE (Supplier Part # 25.2652.01.0015)	
19	(See Description)	1	Fuel pipe grommet (Supplier Part # 25.2652.99.0105)	
22	(See Description)	20	O-ring, 7.5 x 2 (Supplier Part # 25.2481.99.0107)	
23	(See Description)	1	Dismantling kit for control box (Supplier Part # 25.2652.81.0000)	

# ESPAR HEATER SYSTEM

## HEATER UNIT COMPONENTS



# ESPAR HEATER SYSTEM

## HEATER UNIT COMPONENTS

REF	PART #	QTY	DESCRIPTION	SEE SECTION
1	(See Description)	1	Fuel metering pump, 12 V, inlet pressure resistant (Supplier Part # 22.4554.01.0000)	
2	(See Description)	1	Bracket fuel metering pump (Supplier Part # 22.1000.50.0400)	
3	(See Description)	1	Bracket (Supplier Part # 20.1348.03.0002)	
4	(See Description)	1	Hose 3.5 x 3 mm (Supplier Part # 360.75.400)	
5	(See Description)	1	Hose clip, Ø 9 mm (Supplier Part # 10.2068.00.9098)	
6	(See Description)	1	Pipe, 4 x 1 VW TL 524 35-A, BLACK (Supplier Part # 890.31.138) Pipe, 4 x 1 DIN 73378, BLUE (Supplier Part # 890.31.054)	
7	(See Description)	1	Adapter, Ø 7.5 / 3.5 mm (Supplier Part # 22.1000.20.3000)	
8	(See Description)	1	Hose clip, Ø 11 mm (Supplier Part # 10.2068.01.1098)	
9	(See Description)	1	Tank connection, d = 4 mm (Supplier Part # 22.1000.20.1600)	
10	(See Description)	1	Cable harness heater (Supplier Part # 25.2933.80.1100)	
11	(See Description)	1	Cable harness blower (Supplier Part # 22.1000.35.0100)	
12	(See Description)	1	Relay, 12 V (Supplier Part # 203.00.097)	
14	(See Description)	1	Bracket diagnostic connector, combi-clip (Supplier Part # 22.1000.51.4900)	
15	(See Description)	1	Fuse bracket, complete set (Supplier Part # 22.1000.31.0600)	
	(No Illustration)	1	Fuse link 5 A (Supplier Part # 204.00.007)	
	(No Illustration)	1	Fuse link 20 A (Supplier Part # 204.00.010)	
	(No Illustration)	1	Fuse link 25 A (Supplier Part # 204.00.011)	
16	(See Description)	1	Adapter di = 4.5 / 3.5 mm (Supplier Part # 25.2635.05.0007)	
17	(See Description)	1	Water pump, 12 V (Supplier Part # 25.2652.25.0000)	
18	(See Description)	1	Bracket water pump (Supplier Part # 22.1000.51.3900)	
19	(See Description)	1	Cable harness water pump (Supplier Part # 25.2652.80.1500)	
20	(See Description)	1	Hose water, di = 20 mm (Supplier Part # 25.1917.80.0001)	
21	(See Description)	1	Hose clip, 20 – 32 mm (Supplier Part # 10.2067.02.0032)	
22	(See Description)	1	Spacer ring exhaust pipe, 21 / 44 (Supplier Part # 22.1000.50.1002)	
23	(See Description)	1	Heater bracket (Supplier Part # 22.1000.51.4200)	
24	(See Description)	1	Screw M6x16, thread forming (Supplier Part # 25.2517.05.0006)	
25	(See Description)	1	Holder, straight, L = 135 mm (Supplier Part # 22.9000.50.9305)	
26	(See Description)	1	Holder, straight, L = 180 mm (Supplier Part # 22.9000.50.9306)	
27	(See Description)	1	CLAMP (Supplier Part # 22.1000.51.4400)	
28	(See Description)	1	Combustion air intake silencer (Supplier Part # 22.1000.40.0013)	
29	(See Description)	1	Hose clip, 16 – 25 mm (Supplier Part # 10.2067.01.6025)	
30	(See Description)	1	Hose exhaust, di = 24 mm, L = 900 mm (Supplier Part # 360.61.274)	
31	(See Description)	1	Exhaust hose, di = 24 mm, L = 300 mm, (Supplier Part # 20.1731.80.0400)	
32	(See Description)	1	Exhaust silencer (Supplier Part # 22.1000.40.2100)	
33	(See Description)	1	Bracket exhaust silencer, Z shape (Supplier Part # 20.1533.88.0007)	
34	(See Description)	1	Bracket exhaust silencer, L shape (Supplier Part # 20.1348.03.0004)	
35	(See Description)	1	Clip, Ø 28 mm (Supplier Part # 152.09.010)	
36	(See Description)	1	Connector metering pump (Supplier Part # 206.31.294)	
37	(See Description)	1	Pot-type strainer for metering pump (Supplier Part # 20.1312.00.0006)	

# ESPAR HEATER SYSTEM

## HEATER UNIT COMPONENTS



REF	PART #	QTY	DESCRIPTION	SEE SECTION
	58369	1	HEATER CONTROL / TIMER (20 2800 70 22 00)	



**PAGE INTENTIONALLY LEFT BLANK**

