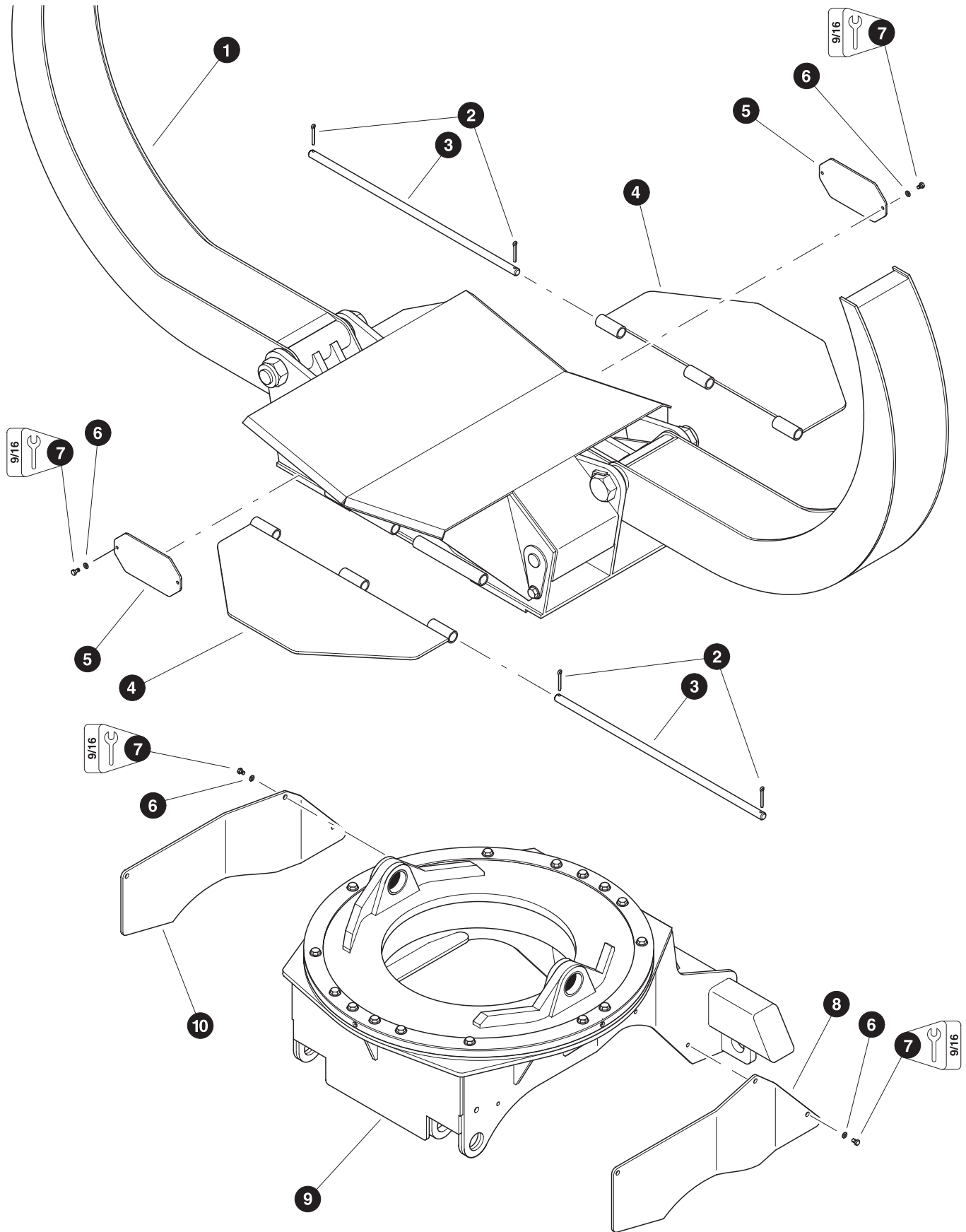





Section CB-1



***Clam Bunk -
Structural***

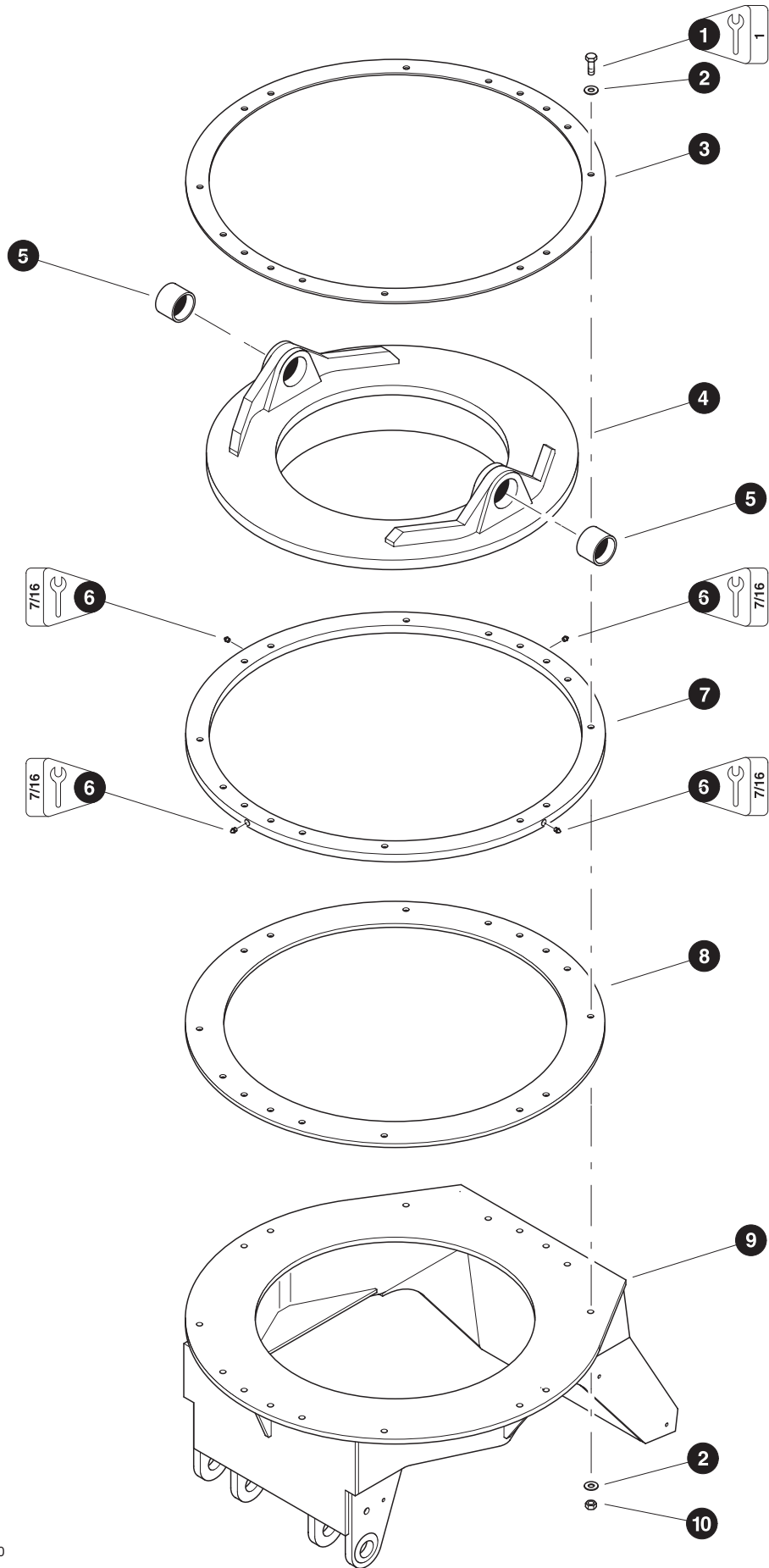


Parts 01916 11/27/2000
9.375

CLAM BUNK ACCESS COVERS & GUARDS

REF	PART #	QTY	DESCRIPTION	SEE SECTION
-	23992-CB	1	 CLAM BUNK COMPLETE (2.5" Pins)	
1	REF.	1	 CLAM BUNK UPPER COMPONENTS	CB-1
2	20249-CB	4	PIN, cotter - 1/4" x 2"	
3	13390-CB	2	SHAFT, hinge cover	
4	13385-CB	2	COVER, hinge	
5	13415-CB	4	COVER, access - arm mounting base	
6	15528-CB	14	WASHER, SAE flat - 3/8"	
7	11707-CB	14	BOLT - 3/8" x 1"	
8	13488-CB	1	COVER, access - clam mounting base - RH	
9	REF.	1	 CLAM BUNK LOWER BASE COMPONENTS	CB-1
10	13489-CB	1	COVER, access - clam mounting base - LH	

-  See referenced page for component breakdown.
-  Kit or Assembly - includes all items indented underneath.



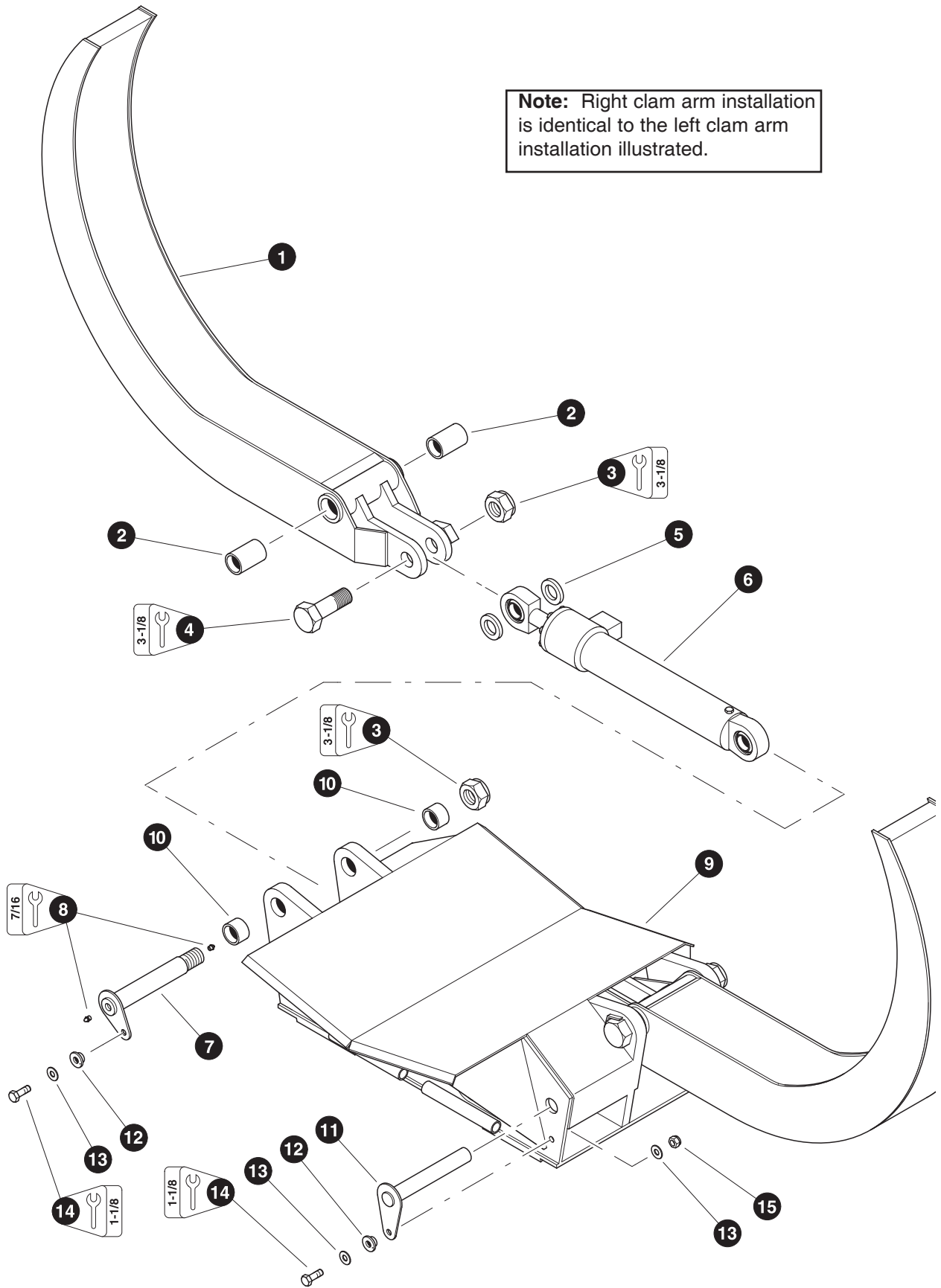
Parts 01909 11/22/2000
9.375

CLAM BUNK LOWER BASE COMPONENTS

REF	PART #	QTY	DESCRIPTION	SEE SECTION
1	10773-CB	16	BOLT - 5/8" x 3-1/2"	
2	10771-CB	32	WASHER, SAE flat - 5/8"	
3	13380-CB	1	RING, clam pivot hold-down	
4	13465-CB	1	<input type="checkbox"/> WELDMENT, clam pivot	
5	12397-CB	2	BUSHING - 3" x 2-1/2"	
6	10704-CB	4	FITTING, grease	
7	13463-CB	1	RING, clam pivot spacer	
8	13366-CB	1	RING, clam pivot wear	
9	13480-CB	1	WELDMENT, clam mounting base	
10	10816-CB	16	NUT, lock - 5/8"	

Kit or Assembly - includes all items indented underneath.

Note: Right clam arm installation is identical to the left clam arm installation illustrated.

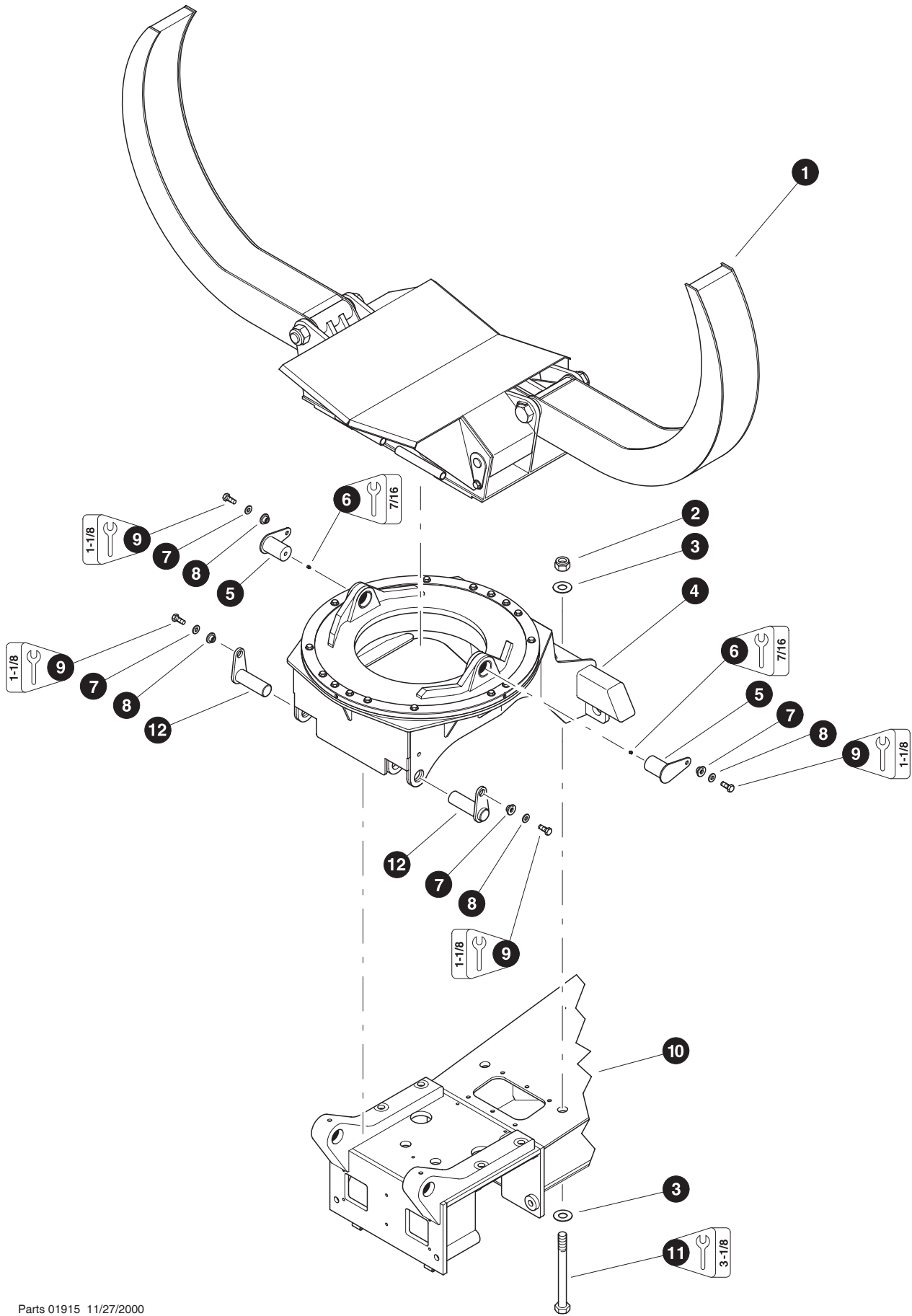


Parts 02016 12/12/2001
9.375

CLAM BUNK ARM INSTALLATION





REF	PART #	QTY	DESCRIPTION	SEE SECTION
1	13535-CB	2	<input type="checkbox"/> WELDMENT, clam bunk arm	
2	11704-CB	2	BUSHING - 2-1/2" x 4-1/4"	
3	10728-CB	4	NUT, nylock - 2"	
4	20251-CB	2	PIN, clam cylinder rod - 2" x 7"	
5	20758-CB	4	SPACER	
6	REF.	2	<input type="checkbox"/> CLAM BUNK CYLINDER.	CB-2
7	13533-CB	2	<input type="checkbox"/> PIN, clam arm - 2-1/2" x 18"	
8	10704-CB	4	FITTING, grease	
9	13531-CB	1	<input type="checkbox"/> WELDMENT, clam arm base	
10	13532-CB	4	BUSHING - 2" x 1-3/4"	
11	19542-CB	2	PIN, clam cylinder base	
12	18570-CB	4	WASHER, pin retaining	
13	15550-CB	6	WASHER, SAE flat - 3/4"	
14	10775-CB	4	BOLT - 3/4" x 2-1/2"	
15	10817-CB	2	NUT, lock - 3/4"	

- Kit or Assembly - includes all items indented underneath.
- See referenced page for component breakdown.



Parts 01915 11/27/2000
6.25

CLAM BUNK UNIT INSTALLATION

REF	PART #	QTY	DESCRIPTION	SEE SECTION
1	REF.	1	 CLAM BUNK UPPER COMPONENTS	CB-1
2	19614-CB	2	NUT, lock - 1-1/2"	
3	19613-CB	4	WASHER, flat - 1-1/2"	
4	REF.	1	 CLAM BUNK LOWER BASE COMPONENTS	CB-1
5	19544-CB	2	 PIN, clam bunk pivot	
6	10704-CB	1	FITTING, grease	
7	18570-CB	4	WASHER, pin retaining	
8	15550-CB	4	WASHER, SAE flat - 3/4"	
9	10549-CB	4	BOLT - 3/4" x 2"	
10	REF.	1	 REAR FRAME WELDMENT	
11	20415-CB	2	BOLT - 1-1/2" x 19"	
12	23434-CB	2	PIN, floating bunk - 2-1/2" x 7-7/8"	



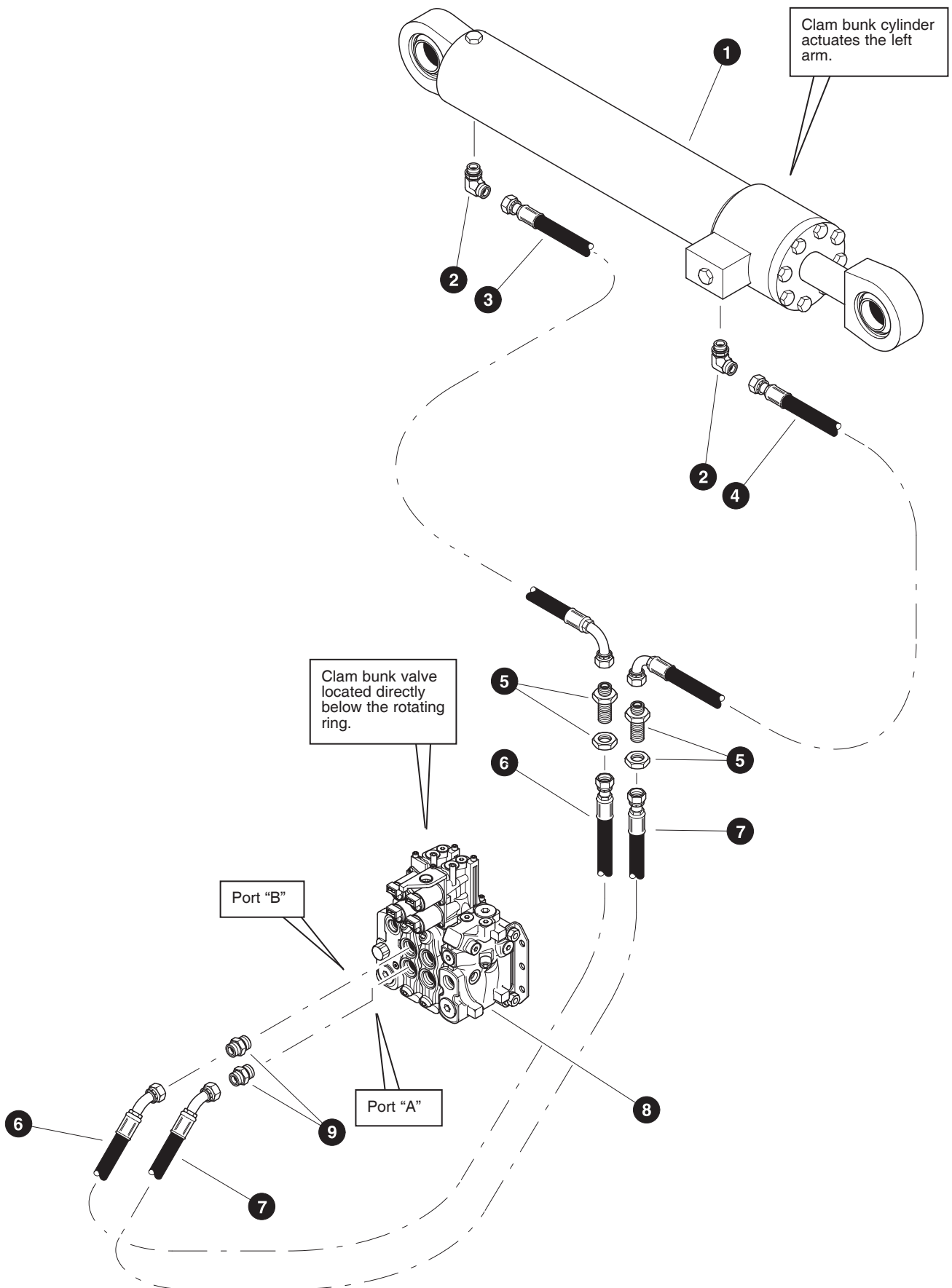
See referenced page for component breakdown.



Kit or Assembly - includes all items indented underneath.



Section CB-2


Clam Bunk - Hydraulic Circuits & Components

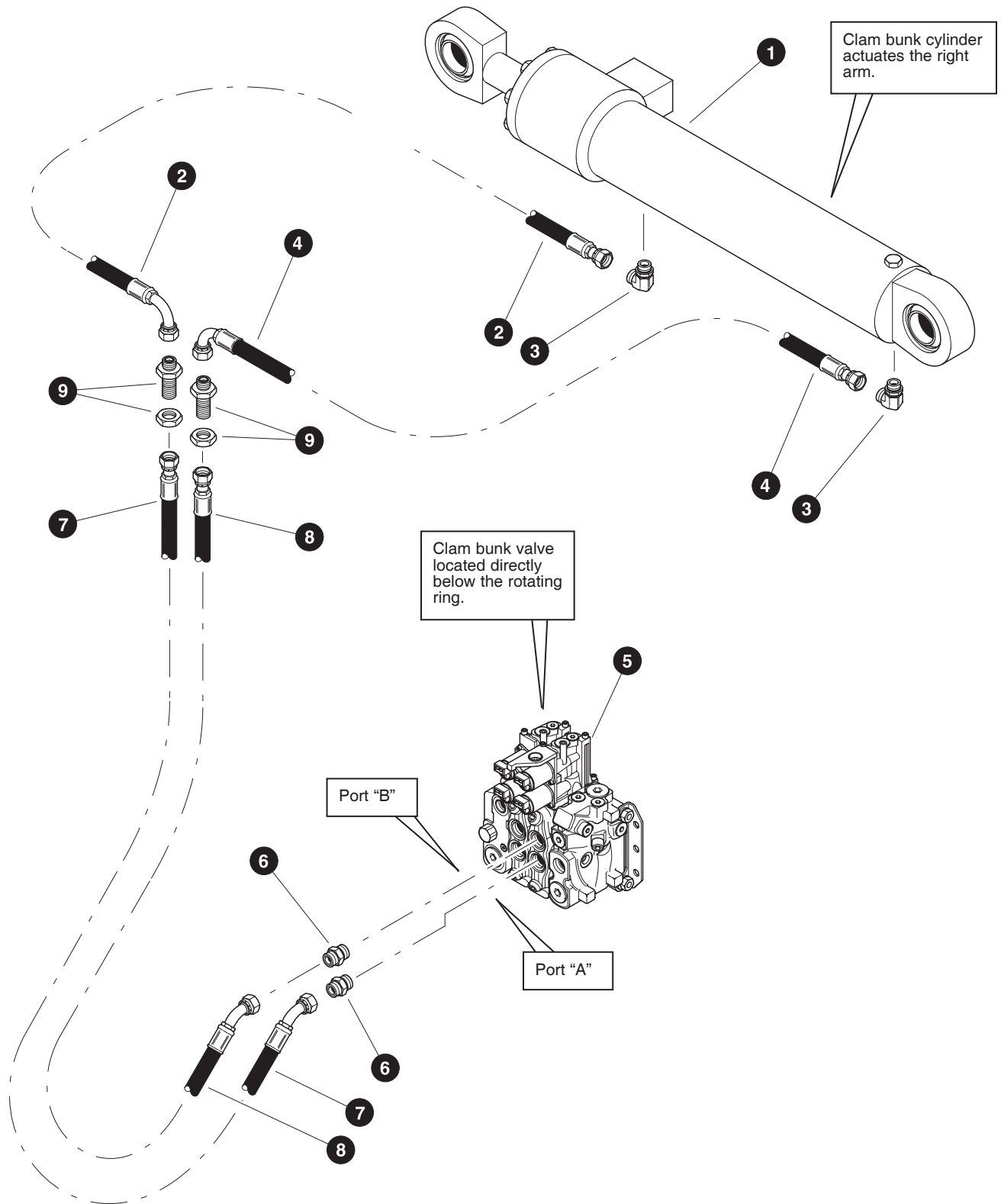


CLAM BUNK ARM LINES (Clam Bunk Valve To Left Clam Bunk Cylinder)

(Used on machines PDN# 151FWD and above)



REF	PART #	QTY	DESCRIPTION	SEE SECTION
1	REF.	1	 CLAM BUNK CYLINDER.	CB-2
2	16360-CB	2	ELBOW, 90° - FF1868T-0808S	
3	17483-CB	1	HOSE ASSEMBLY - 4019-08-080S-0809 <i>(Clam bunk cylinder base port to left front bulkhead fitting)</i>	
4	20195-CB	1	HOSE ASSEMBLY - 4031-08-080S-0809 <i>(Clam bunk cylinder rod port to right front bulkhead fitting)</i>	
5	20196-CB	2	CONNECTOR, straight bulkhead - FF1994T-0808S	
6				
7				
8	REF.	1	 CLAM BUNK CONTROL VALVE.	CB-3
9	15115-CB	2	CONNECTOR, straight - FF1852T-0810S	

 See referenced page for component or assembly breakdown.

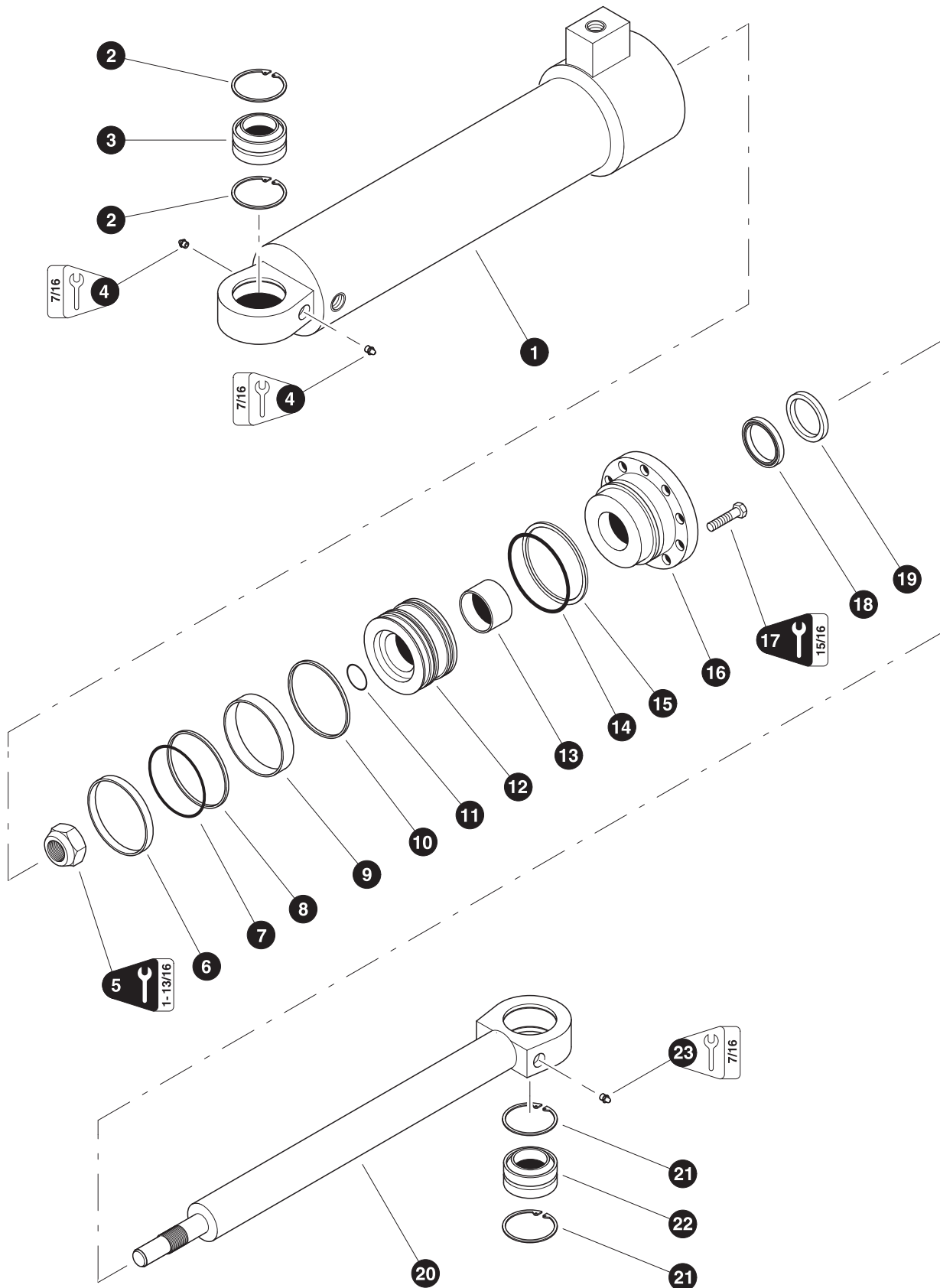


CLAM BUNK ARM LINES

(Clam Bunk Valve To Right Clam Bunk Cylinder)

REF	PART #	QTY	DESCRIPTION	SEE SECTION
1	REF.	1	 CLAM BUNK CYLINDER.	CB-2
2	16360-CB	2	ELBOW, 90° - FF1868T-0808S	
3	20195-CB	1	HOSE ASSEMBLY - 4031-08-080S-0809 (<i>Clam bunk cylinder rod port to left rear bulkhead fitting</i>)	
4	17483-CB	1	HOSE ASSEMBLY - 4019-08-080S-0809 (<i>Clam bunk cylinder base port to right rear bulkhead fitting</i>)	
5	REF.	1	 CLAM BUNK CONTROL VALVE.	CB-3
6	15115-CB	2	CONNECTOR, straight - FF1852T-0810S	
7				
8				
9	20196-CB	2	CONNECTOR, straight bulkhead - FF1994T-0808S	

 See referenced page for component or assembly breakdown.



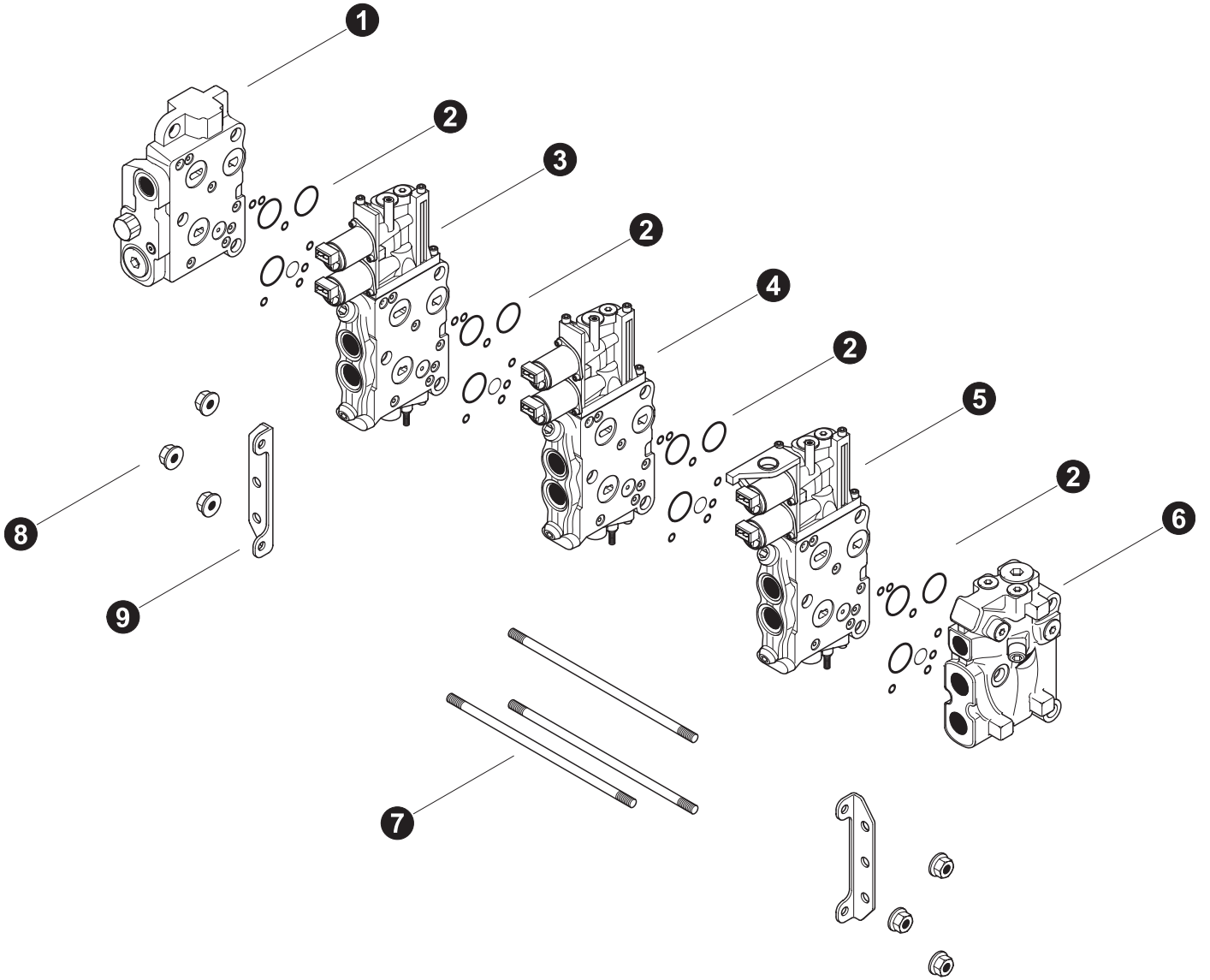
00268 09/08/97
18.75

CLAM ARM CYLINDER (Jarp)

REF	PART #	QTY		DESCRIPTION	SEE SECTION
-	19738-CB	2	<input type="checkbox"/>	CLAM ARM CYLINDER ASSEMBLY	
1	19960-CB	1	<input type="checkbox"/>	BARREL ASSEMBLY	
2	19916-CB	2		RING, snap	
3	19917-CB	1		BUSHING, spherical - 2"	
4	10704-CB	1		FITTING, straight grease - 1/8" pipe thread	
5	15914-CB	1		NUT, cylinder rod - 1-3/4" (Torque to 885 +/- 60 ft.lbs. (1175 +/- 80 Nm))	
6	NSS	1	⌘	RING, piston wear	
7	NSS	1	⌘	RING, piston loader	
8	NSS	1	⌘	RING, piston chem-cast	
9	NSS	1	⌘	RING, piston wear	
10	NSS	1	⌘	RING, piston seal	
11	NSS	1	⌘	O-RING, piston	
12	19573-CB	1		PISTON	
13	NSS	1	⌘	RING, rod bearing wear	
14	NSS	1	⌘	O-RING, rod bearing	
15	NSS	1	⌘	RING, rod bearing back-up	
16	19962-CB	1		BEARING, rod	
17	15681-CB	8		BOLT - 5/8" x 2-1/4" (Torque to 175 ft.lbs (233 Nm))	
18	NSS	1	⌘	U-CUP, rod bearing	
19	NSS	1	⌘	WIPER, rod	
20	19963-CB	1	<input type="checkbox"/>	ROD ASSEMBLY	
21	19916-CB	2		RING, snap	
22	19917-CB	1		BUSHING, spherical - 2"	
23	10704-CB	1		FITTING, straight grease - 1/8" pipe thread	
-	19964-CB	1		KIT, seal repair - steer/clam arm cylinder - 5"	

Kit or Assembly - includes all items indented underneath.

⌘ Included in seal repair kit Part # 19964-LB.



Parts T3264 08/09/2005
18.75

LOWER VOAC CONTROL VALVE BREAKDOWN

REF	PART #	QTY		DESCRIPTION	SEE SECTION
-	52010-CB	1	<input type="checkbox"/>	VALVE, MAIN - VOAC (3-L90) STEER/CLAMBUNK	
1	REF	1	<input type="checkbox"/>	VALVE SECTION - inlet.	LH-2
2	23404-CB	7		KIT, seal repair - L90LS face seals	
3	23321-CB	1	<input type="checkbox"/>	VALVE SECTION, steer - (P/L-3000 PSI)	LH-2
4	24774-CB	1	<input type="checkbox"/>	VALVE SECTION, clam bunk cyl.	LH-2
5	24774-CB	1	<input type="checkbox"/>	VALVE SECTION, clam bunk cyl.	LH-2
6	REF	1	<input type="checkbox"/>	VALVE SECTION - outlet.	LH-2
7	-HR	1	<input type="checkbox"/>	KIT, tie rod (3 section) (393000K003)	
8	23913-CB	6		NUT (Special torque procedure) (See Note #2 Below)	
9	23402-CB	1		KIT, mounting brackets	

- Kit or Assembly - includes all items indented underneath.
 See referenced page for component or assembly breakdown.

Note #1:

Illustration and parts list reflects a standard valve configuration used for a TF 830 W / CLAM BUNK machine. Contact your dealer if your valve or machine configuration differs.

Note #2:

Tie rod nuts should be torqued in a clockwise pattern in three steps, 7.5 ft.lbs. (10 Nm), 22.5 ft.lbs. (30 Nm) and 33.5 ft.lbs. (45 Nm).

