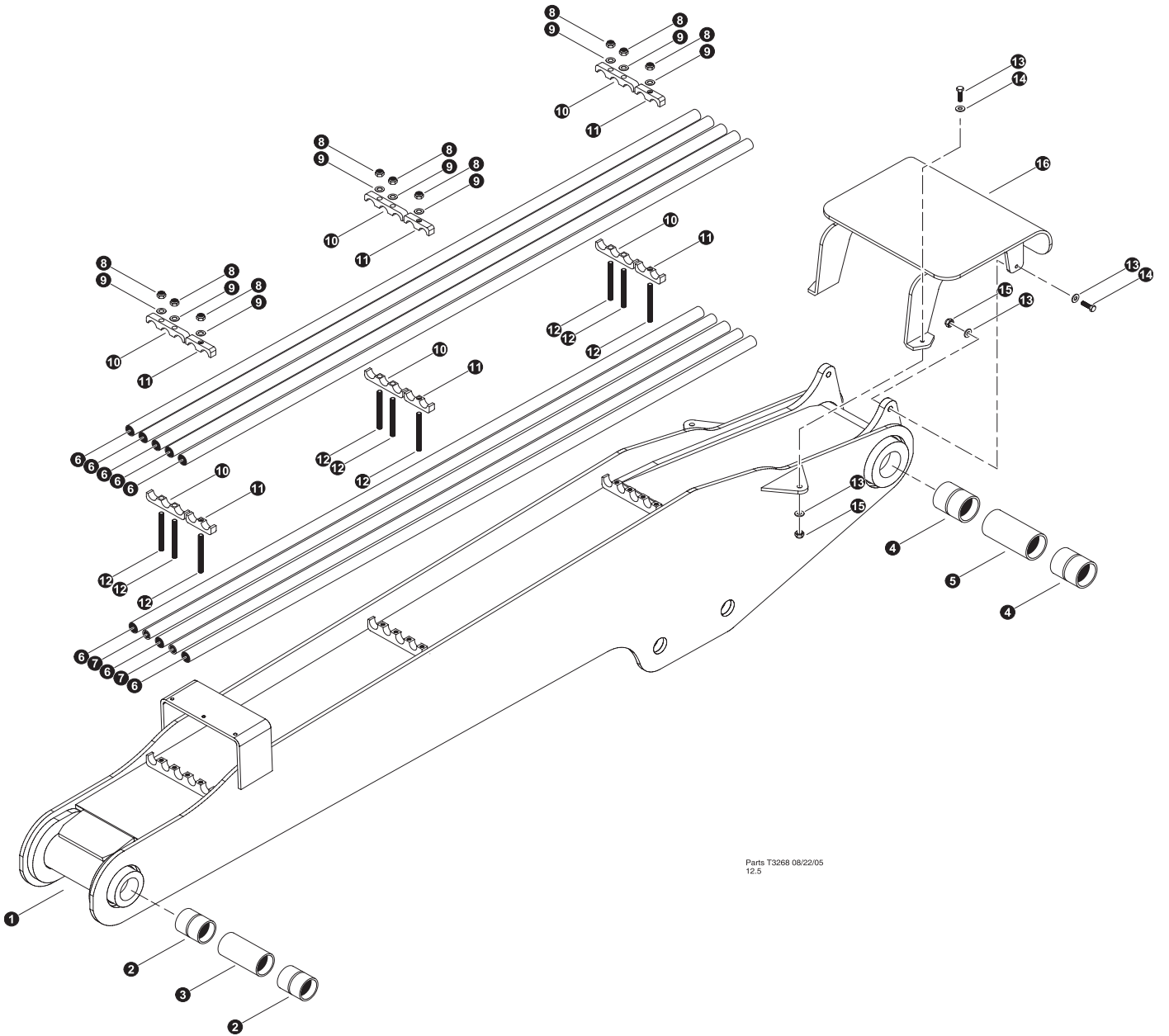


Section HB-1

Harvester Booms - Main Boom

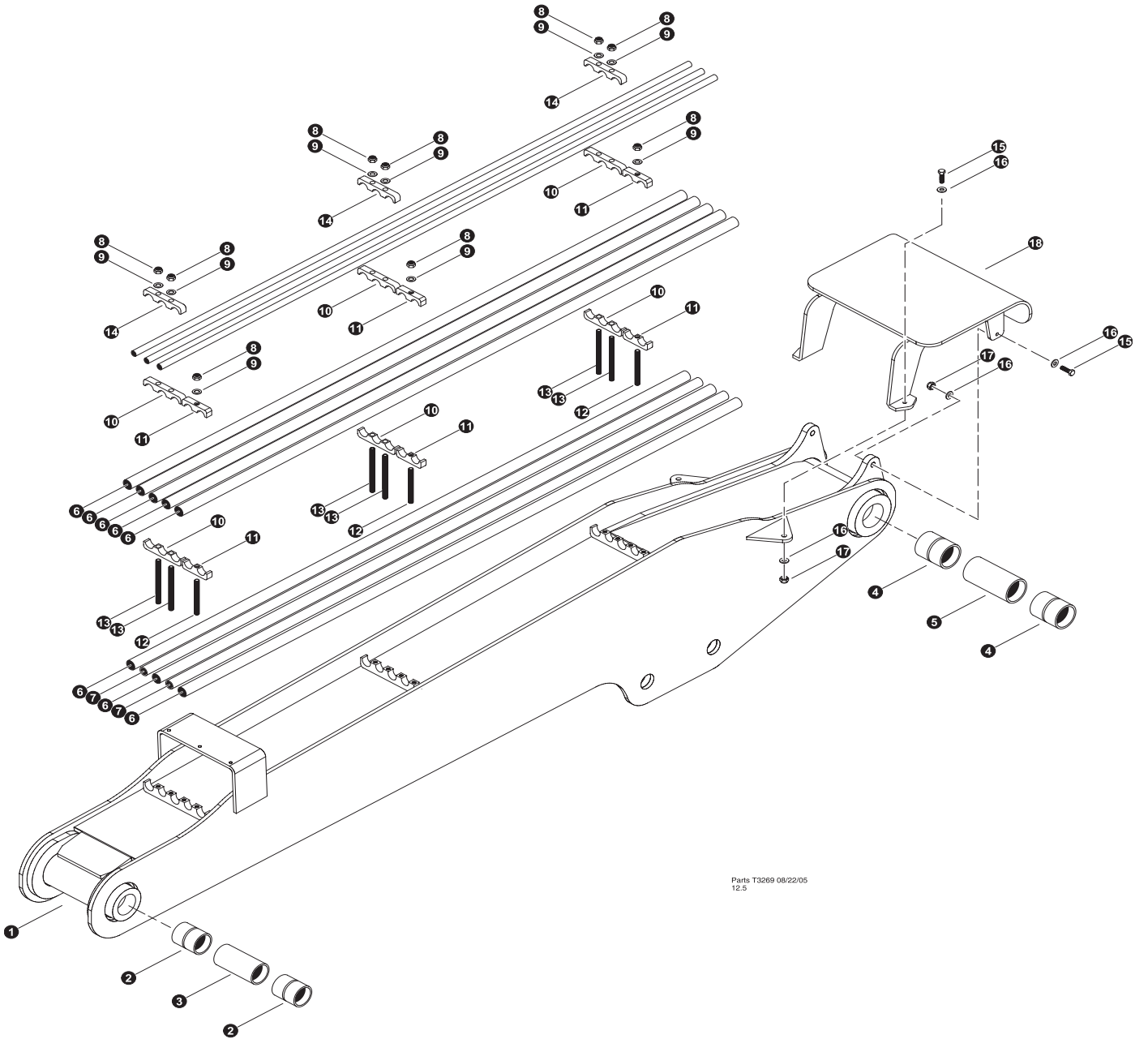


Parts T3268 08/22/05
12.5

MAIN BOOM COMPONENTS (Harvester / Buncher Boom)

| REF | PART # | QTY | DESCRIPTION | SEE SECTION |
|-----|----------|-----|--|-------------|
| 1 | 51595-HB | 1 | <input type="checkbox"/> WELDMENT, MAIN BOOM (STRAIGHT TB - 830 / 630) | |
| 2 | 42485-HB | 2 | BUSHING - 3.5" X 3.0" X 4.25" UNDERSIZE | |
| 3 | 12365-HB | 1 | SPACER, base - 3" x 7-1/2" | |
| 4 | 18564-HB | 2 | BUSHING - 3.5" X 4.25" | |
| 5 | 42410-HB | 1 | SPACER, 3.5 X 7.44 | |
| 6 | 51833-HB | 8 | TUBELINE - 1" X 108" FB MAIN TF830 | |
| 7 | 51834-HB | 2 | TUBELINE - .75" X 108" FB MAIN TF830 | |
| 8 | 15563-HB | 9 | NUT, nylock - 5/8" | |
| 9 | 10771-HB | 9 | WASHER, SAE flat - 5/8" | |
| 10 | 85086-HB | 6 | CLAMP, saddle top tube - 1" x 1" x 1" | |
| 11 | 12447-HB | 6 | CLAMP, saddle top tube - 1" x 1" | |
| 12 | 15672-HB | 9 | STUD - 5/8" x 6-1/4" | |
| 13 | 15517-HB | 4 | BOLT - .625" X 2.5" | |
| 14 | 10771-HB | 8 | WASHER, SAE flat - 5/8" | |
| 15 | 10816-HB | 4 | NUT, LOCK - .625" | |
| 16 | 51988-HB | 1 | GUARD, HOSE - MAIN BOOM (FB) 630/830 | |

Kit or Assembly - includes all items indented underneath.

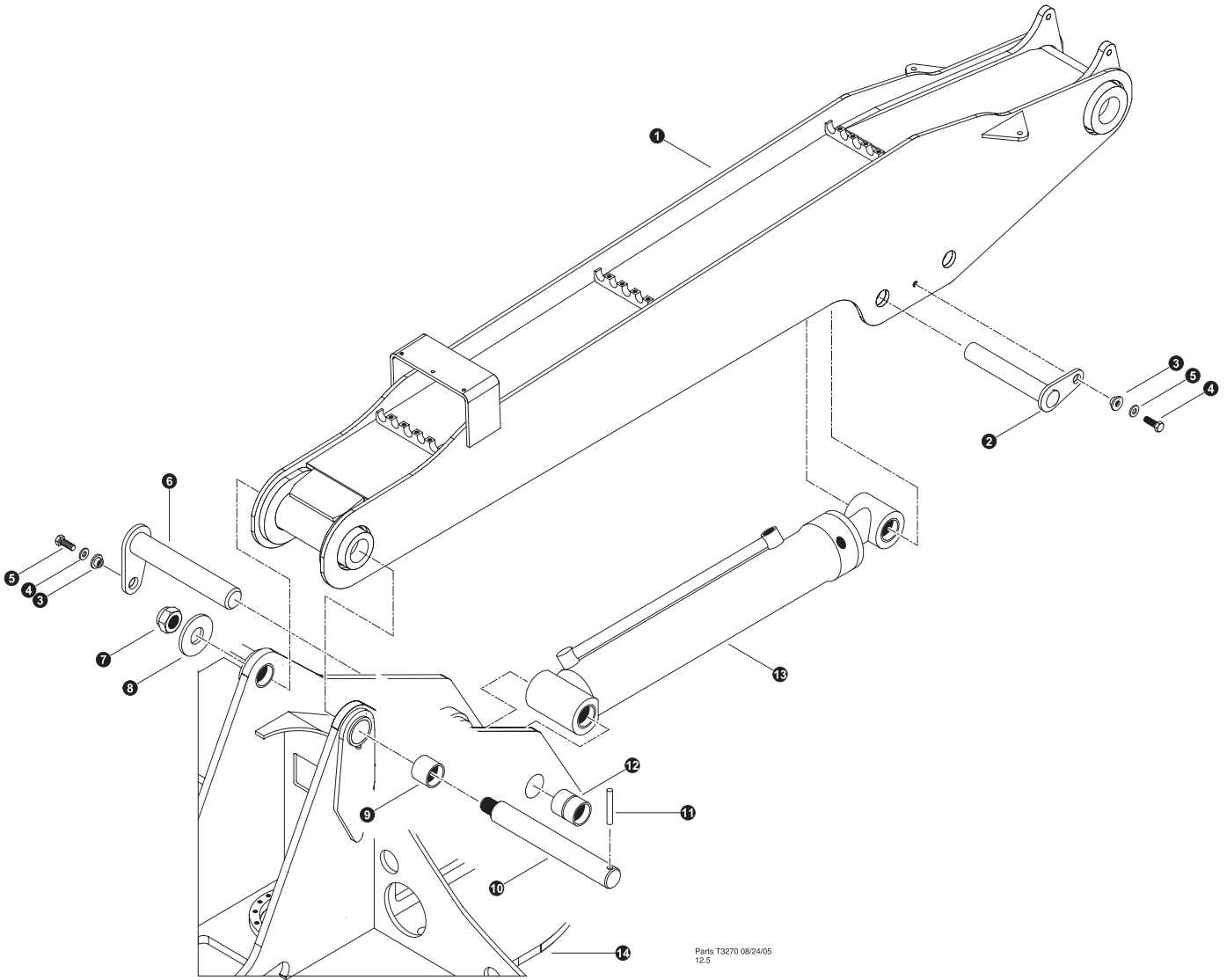


Parts T3269 08/22/05
12.5

MAIN BOOM COMPONENTS
(Harvester / Buncher Boom)
Extra Tube lines for Disc Saw



| REF | PART # | QTY | DESCRIPTION | SEE SECTION |
|-----|----------|-----|--|-------------|
| 1 | 51595-HB | 1 | <input type="checkbox"/> WELDMENT, MAIN BOOM (STRAIGHT TB - 830 / 630) | |
| 2 | 42485-HB | 2 | BUSHING - 3.5" X 3.0" X 4.25" UNDERSIZE | |
| 3 | 12365-HB | 1 | SPACER, base - 3" x 7-1/2" | |
| 4 | 18564-HB | 2 | BUSHING - 3.5" X 4.25" | |
| 5 | 42410-HB | 1 | SPACER, 3.5 X 7.44 | |
| 6 | 51833-HB | 8 | TUBELINE - 1" X 108" FB MAIN TF830 | |
| 7 | 51834-HB | 2 | TUBELINE - .75" X 108" FB MAIN TF830 | |
| 8 | 15563-HB | 9 | NUT, nylock - 5/8" | |
| 9 | 10771-HB | 9 | WASHER, SAE flat - 5/8" | |
| 10 | 85086-HB | 6 | CLAMP, saddle top tube - 1" x 1" x 1" | |
| 11 | 12447-HB | 6 | CLAMP, saddle top tube - 1" x 1" | |
| 12 | 15672-HB | 3 | STUD - 5/8" x 6-1/4" | |
| 13 | 17062-HB | 6 | STUD - 5/8" X 8" | |
| 14 | 85086-HB | 3 | CLAMP, saddle top tube - 1" x 1" x 1" | |
| 15 | 15517-HB | 4 | BOLT - .625" X 2.5" | |
| 16 | 10771-HB | 8 | WASHER, SAE flat - 5/8" | |
| 17 | 10816-HB | 4 | NUT, LOCK - .625" | |
| 18 | 51988-HB | 1 | GUARD, HOSE - MAIN BOOM (FB) 630/830 | |


Kit or Assembly - includes all items indented underneath.

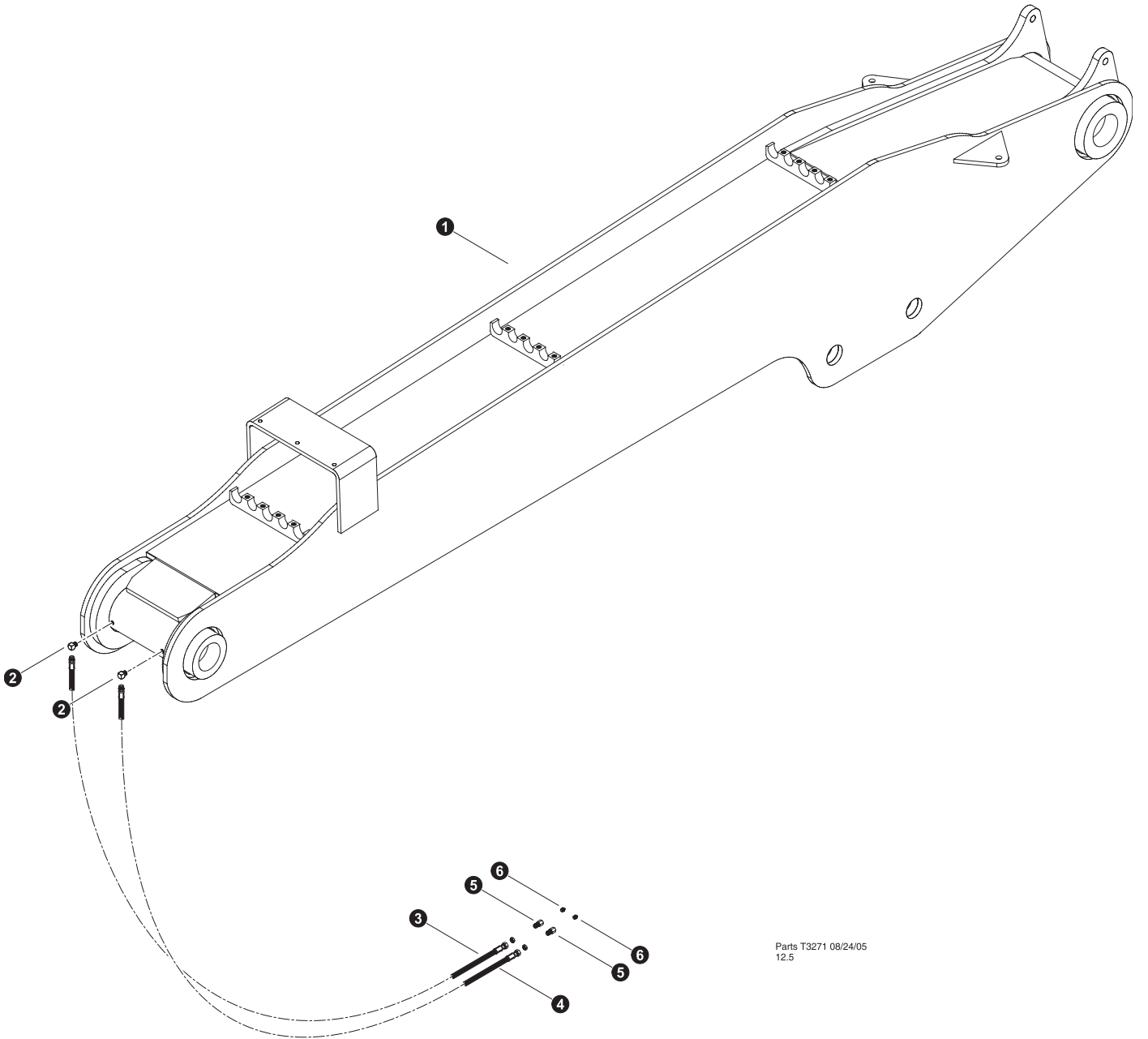


Parts T3270 08/24/05
12.5

MAIN BOOM INSTALLATION



| REF | PART # | QTY | DESCRIPTION | SEE SECTION |
|-----|----------|-----|--|-------------|
| 1 | REF | 1 |  MAIN BOOM ASSEMBLY | HB-1 |
| 2 | 51653-LB | 1 | PIN ASSEMBLY, 2.99 DIA X 14.25" | |
| 3 | 18570-LB | 2 | WASHER, PIN RETAINING | |
| 4 | 15550-LB | 2 | WASHER, SAE FLAT - .75" | |
| 5 | 15549-LB | 2 | BOLT - .75" X 2.0 | |
| 6 | 51575-LB | 1 | PIN ASSEMBLY, 2.99 DIA X 18.63" | |
| 7 | 10728-LB | 1 | NUT, NYLOCK - 2" (ZINC PLATED) | |
| 8 | 19384-LB | 1 | WASHER, BURNED - 2.12" ID X 6" OD X .5" | |
| 9 | 42484-LB | 2 | BUSHING - 3.5" X 3.0" X 2.0" UNDERSIZE | |
| 10 | 51952-LB | 1 | PIN ASSEMBLY, 2.99 DIA X 24.63" | |
| 11 | 51953-LB | 1 | PIN, DOWEL 1 DIA X 5 LG | |
| 12 | 42485-LB | 2 | BUSHING - 3.5" X 3.0" X 4.25" UNDERSIZE | |
| 13 | REF. | 1 | MAIN BOOM CYLINDER (Feller Buncher) | HB-4 |
| 14 | REF. | 1 |  UPPER TURNTABLE WELDMENT | UP-1 |



- Kit or Assembly - includes all items indented underneath.
-  See referenced page for component or assembly breakdown.



Parts T3271 08/24/05
12.5

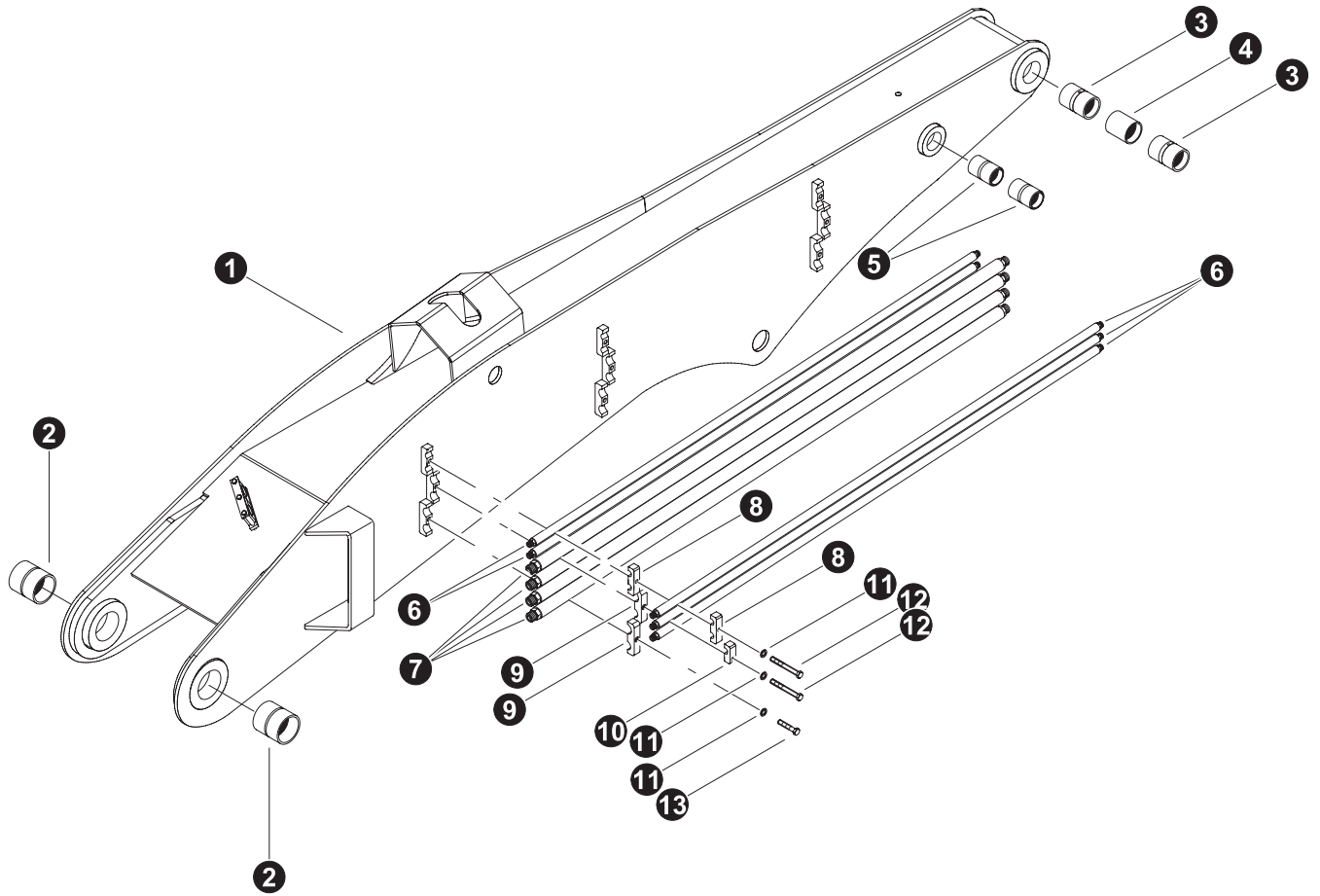
MAIN BOOM GREASE LINES

| REF | PART # | QTY | DESCRIPTION | SEE SECTION |
|-----|----------|-----|--|-------------|
| 1 | REF | 1 |  MAIN BOOM ASSEMBLY | HB-1 |
| 2 | 22281-HB | 6 | FITTING, 90° - 5546132 | |
| - | 51977-HB | 1 |  KIT, hose - grease lines - <i>Feller Buncher</i> | |
| 3 | -HB | 2 | HOSE ASSEMBLY 2060-02-02PS-04JS | |
| 4 | -HB | 2 | HOSE ASSEMBLY 2052-02-02PS-04JS | |
| 5 | 15658-HB | 2 | CONNECTOR, straight bulkhead - 2239-2-4S | |
| 6 | 10704-HB | 7 | FITTING, straight grease - 1/8" pipe thread | |

-  Kit or Assembly - includes all items indented underneath.
-  See referenced page for component or assembly breakdown.

Section HB-2

Harvester Booms - Stick Boom

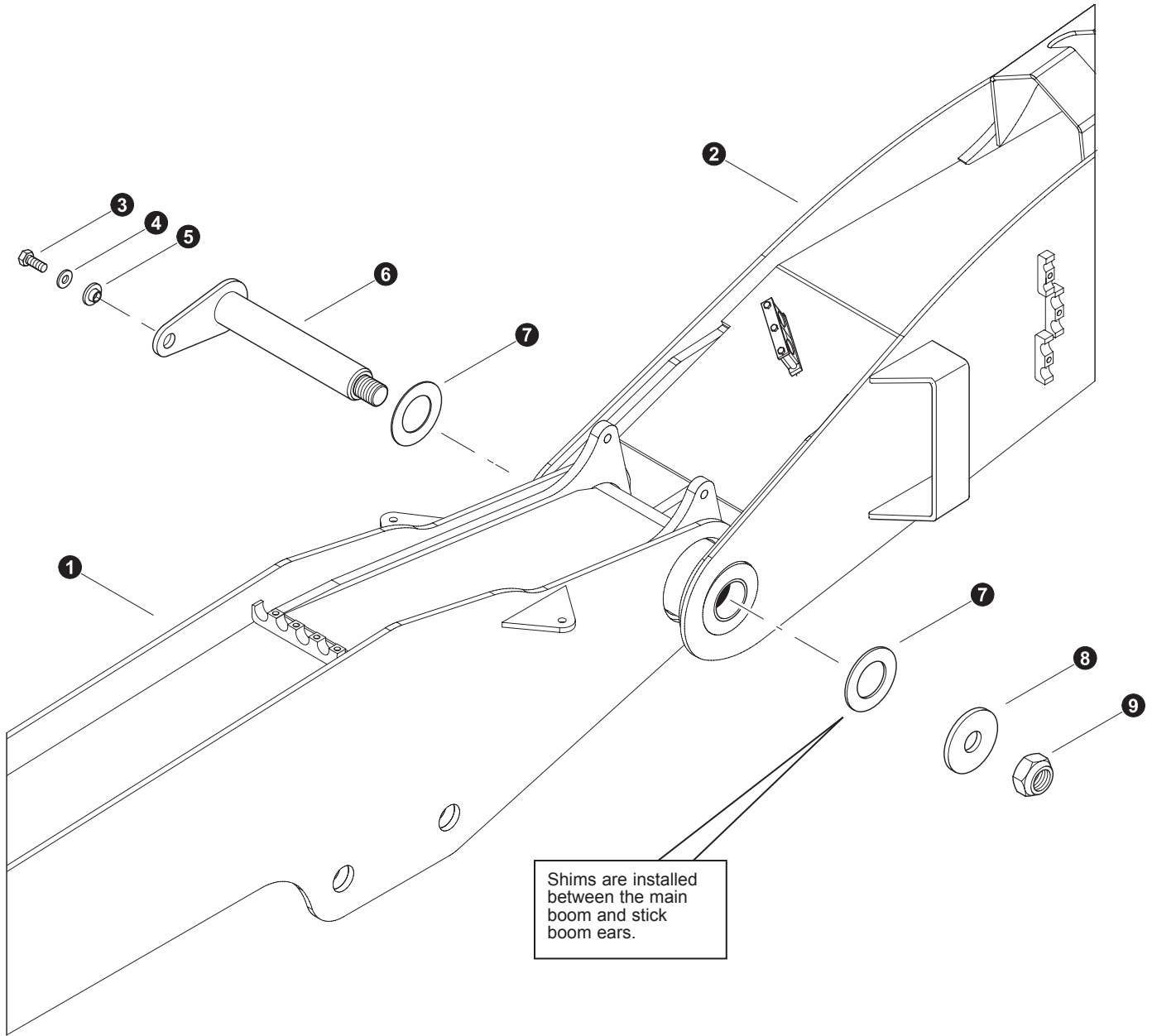


Parts T3272 08/29/2005
6.25

STICK BOOM COMPONENTS



| REF | PART # | QTY | DESCRIPTION | SEE SECTION |
|-----|----------|-----|---|-------------|
| 1 | 51596-HB | 1 | WELDMENT, stick boom - TB 830 / 630 | |
| 2 | 18565-HB | 2 | BUSHING - 3.5" X 2.5" | |
| 3 | 11704-HB | 2 | BUSHING - 2-1/2" x 4-1/4" | |
| 4 | 12268-HB | 1 | SPACER, nose - 2-1/2" x 3-1/2" | |
| 5 | 11704-HB | 2 | BUSHING - 2-1/2" x 4-1/4" | |
| 6 | 16513-HB | 5 | TUBELINE - 1/2" x 80" (<i>Straight</i>) | |
| 7 | 16506-HB | 4 | TUBELINE - 1" x 84" (<i>Straight</i>) | |
| 8 | 15272-HB | 3 | CLAMP, saddle top tube - 1/2" x 1/2" | |
| 9 | 12447-HB | 6 | CLAMP, SADDLE TOP TUBE - 1" & 1" | |
| 10 | 23222-HB | 3 | CLAMP, SADDLE TOP TUBE - .5" (1 TUBE) | |
| 11 | 10771-HB | 9 | WASHER, SAE flat - 5/8" | |
| 12 | 10773-HB | 6 | BOLT - .625" X 3.5" | |
| 13 | 15681-HB | 3 | BOLT - 5/8" X 2.25" | |

- Kit or Assembly - includes all items indented underneath.

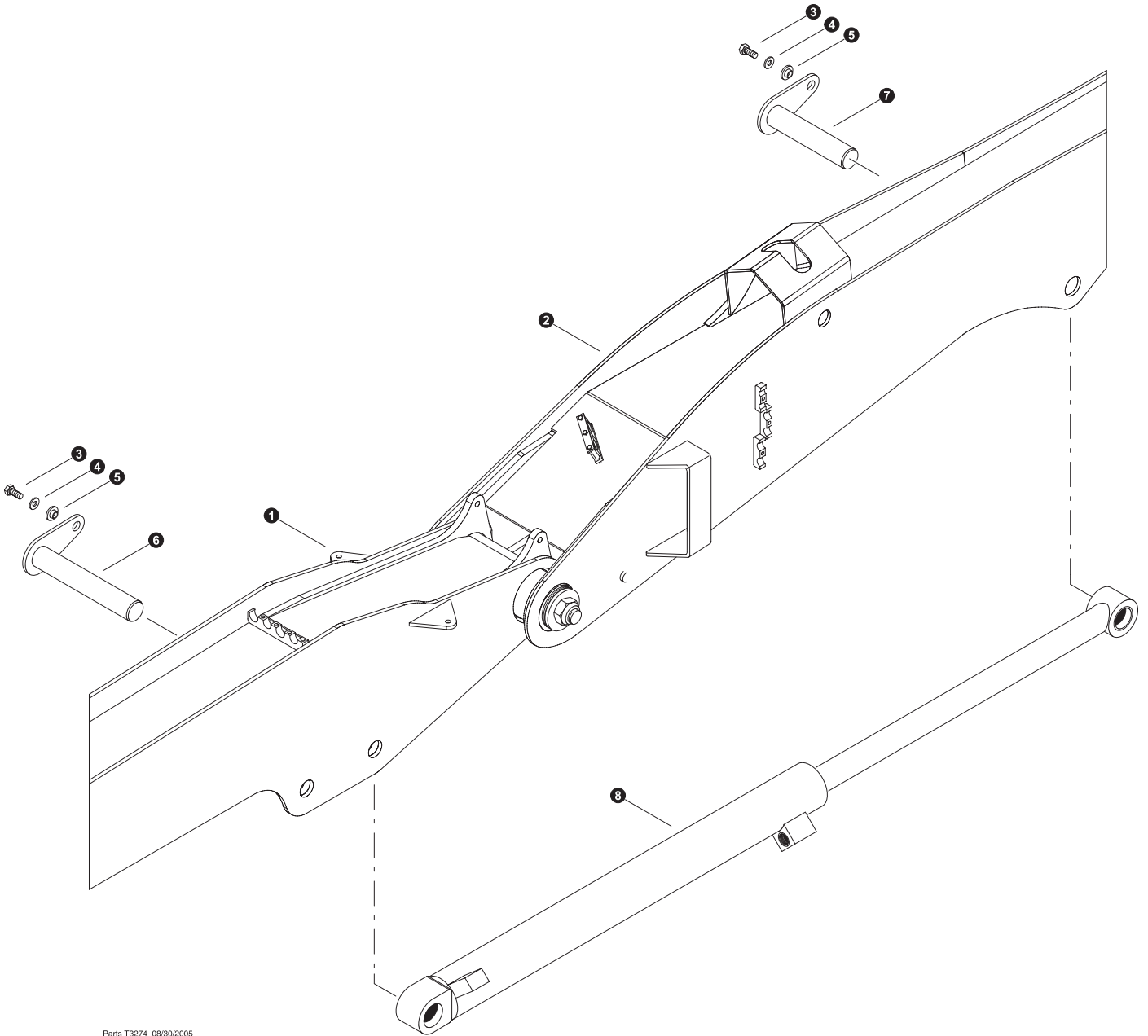


Parts T3273 08/29/2005
12.50

STICK BOOM INSTALLATION




| REF | PART # | QTY | DESCRIPTION | SEE SECTION |
|-----|----------|-----|---|-------------|
| 1 | REF. | 1 |  MAIN BOOM ASSEMBLY | HB-1 |
| 2 | REF. | 1 |  STICK BOOM ASSEMBLY | HB-2 |
| 3 | 15549-HB | 1 | BOLT - 3/4" x 2" | |
| 4 | 15550-HB | 1 | WASHER, SAE flat - 3/4" | |
| 5 | 18570-HB | 1 | WASHER, pin retaining | |
| 6 | 51644-HB | 1 | PIN ASSEMBLY, 3.50 DIA X 21.06 (2" NUT) | |
| 7 | 18678-HB | AR | SHIM - 7 gauge | |
| | 18679-HB | AR | SHIM - 10 gauge | |
| | 18680-HB | AR | SHIM - 14 gauge | |
| 8 | 19384-HB | 1 | WASHER, burned | |
| 9 | 10728-HB | 1 | NUT, nylock - 2" | |


 See referenced page for component or assembly breakdown.

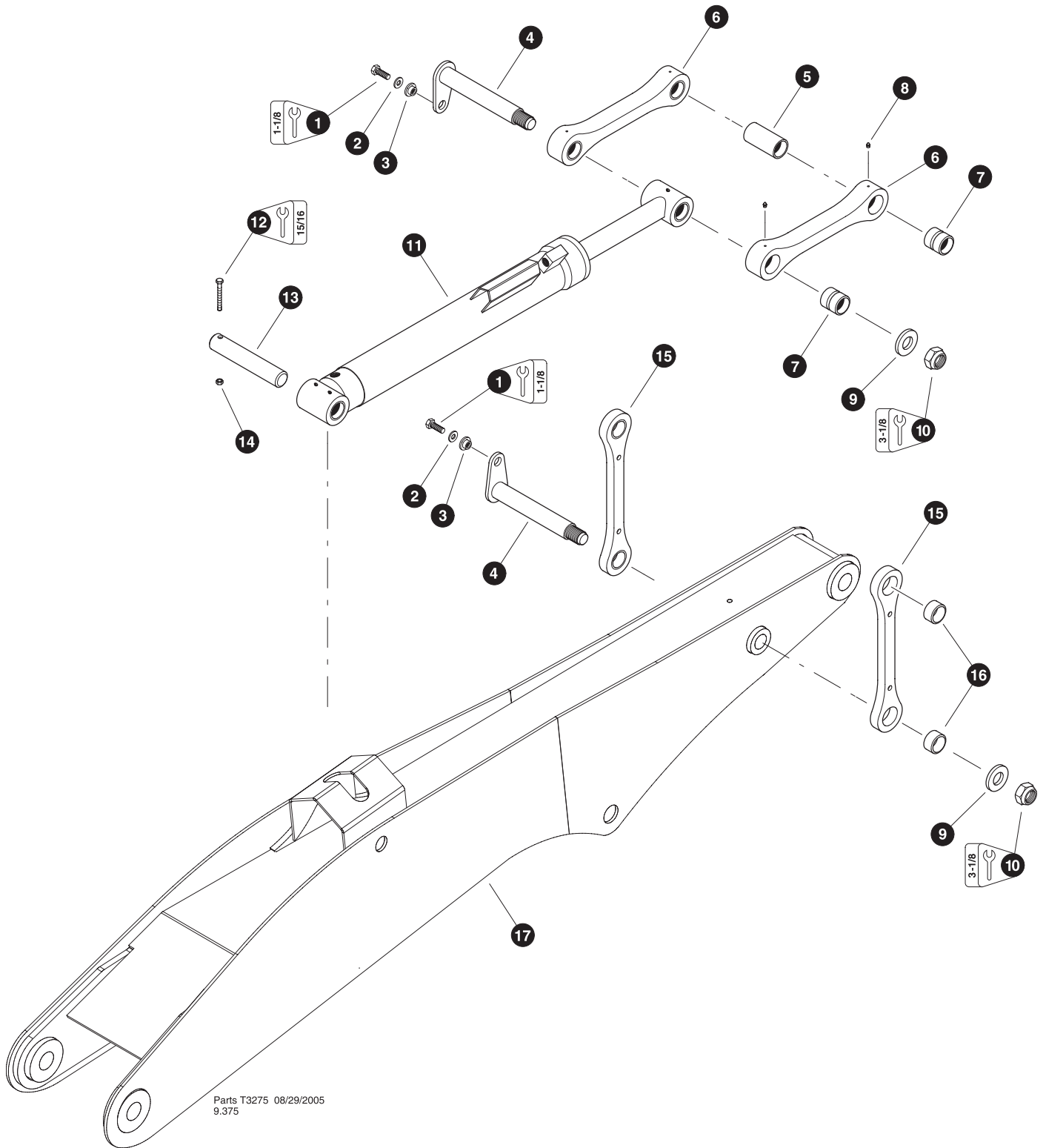


Parts T3274 08/30/2005
12.5

STICK BOOM (JIB) CYLINDER INSTALLATION

| REF | PART # | QTY | DESCRIPTION | SEE SECTION |
|-----|----------|-----|---|-------------|
| 1 | REF. | 1 |  MAIN BOOM ASSEMBLY | HB-1 |
| 2 | REF. | 1 |  STICK BOOM ASSEMBLY | HB-2 |
| 3 | 15549-HB | 1 | BOLT - 3/4" x 2" | |
| 4 | 15550-HB | 1 | WASHER, SAE flat - 3/4" | |
| 5 | 18570-HB | 1 | WASHER, pin retaining | |
| 6 | 21008-HB | 1 | PIN ASSEMBLY - 3" x 14-1/4" | |
| 7 | 50738-HB | 1 | PIN ASSEMBLY, 2.99 DIA X 10.75" | |
| 8 | REF. | 1 |  STICK BOOM (JIB) CYLINDER | HB-4 |

 See referenced page for component or assembly breakdown.

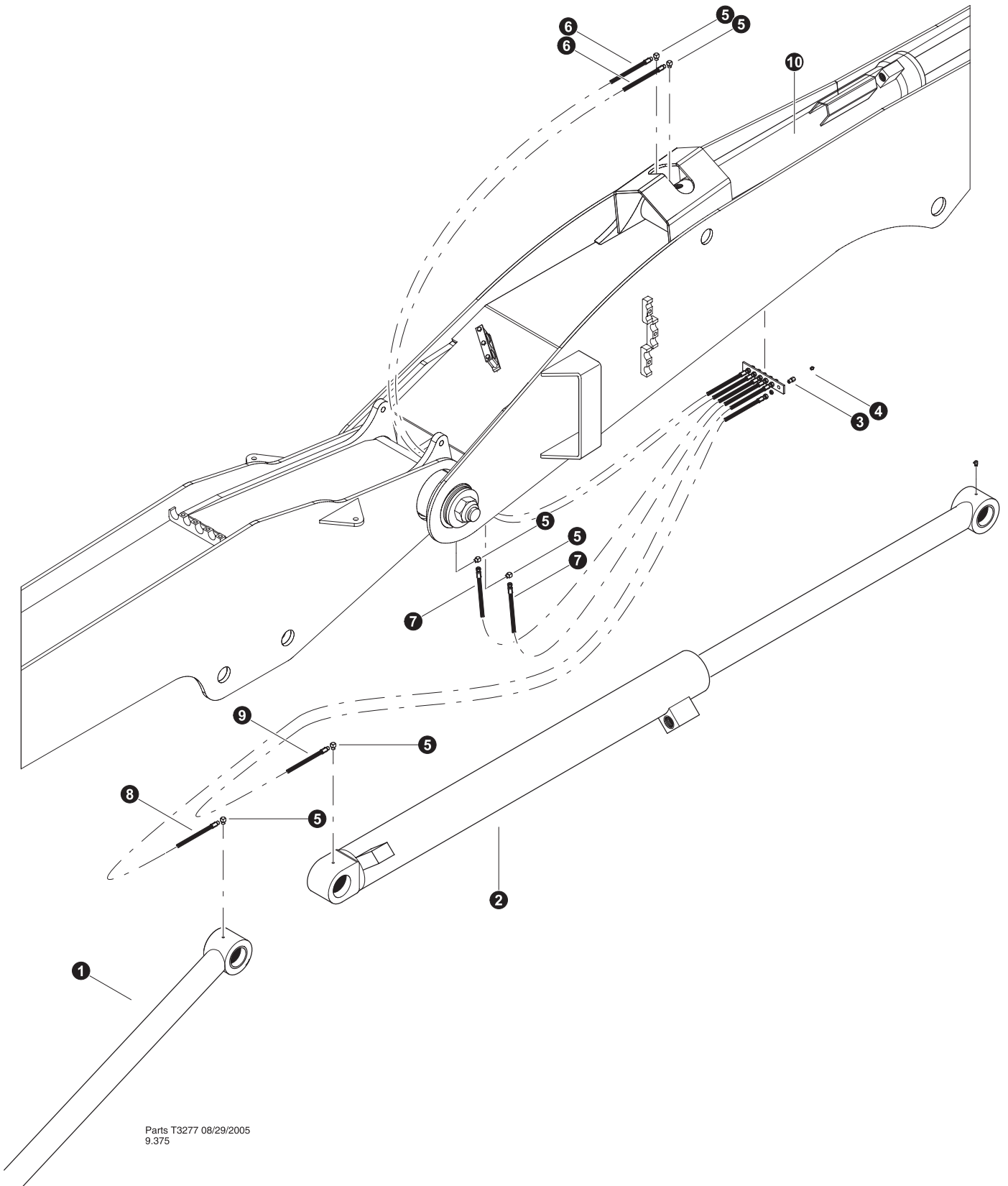


Parts T3275 08/29/2005
9.375





4-BAR LINKAGE INSTALLATION



| REF | PART # | QTY | DESCRIPTION | SEE SECTION |
|-----|----------|-----|---|-------------|
| 1 | 15549-HB | 2 | BOLT - 3/4" x 2" | |
| 2 | 15550-HB | 2 | WASHER, SAE flat - 3/4" | |
| 3 | 18570-HB | 2 | WASHER, pin retaining | |
| 4 | 14246-HB | 2 | PIN, link mounting | |
| 5 | 14243-HB | 1 | SPACER | |
| 6 | 22451-HB | 2 | ☐ LINK, connecting - top | |
| 7 | 14241-HB | 4 | BUSHING - 2-1/2" x 3" | |
| 8 | 10704-HB | 4 | FITTING, straight grease - 1/8" pipe thread | |
| 9 | 12021-HB | 2 | WASHER, burned | |
| 10 | 10728-HB | 2 | NUT, nylock - 2" | |
| 11 | REF. | 1 | 📖 TOOL TILT CYLINDER | HB-4 |
| 12 | 10719-HB | 1 | BOLT - 5/8" x 4" | |
| 13 | 51645-HB | 1 | PIN ASSEMBLY, 2.50 DIA X 14.75" | |
| 14 | 15563-HB | 1 | NUT, nylock - 5/8" | |
| 15 | 22450-HB | 2 | ☐ LINK, connecting - side | |
| 16 | 14242-HB | 4 | BUSHING - 2-1/2" x 1-1/2" | |
| 17 | REF. | 1 | 📖 STICK BOOM ASSEMBLY | HB-2 |

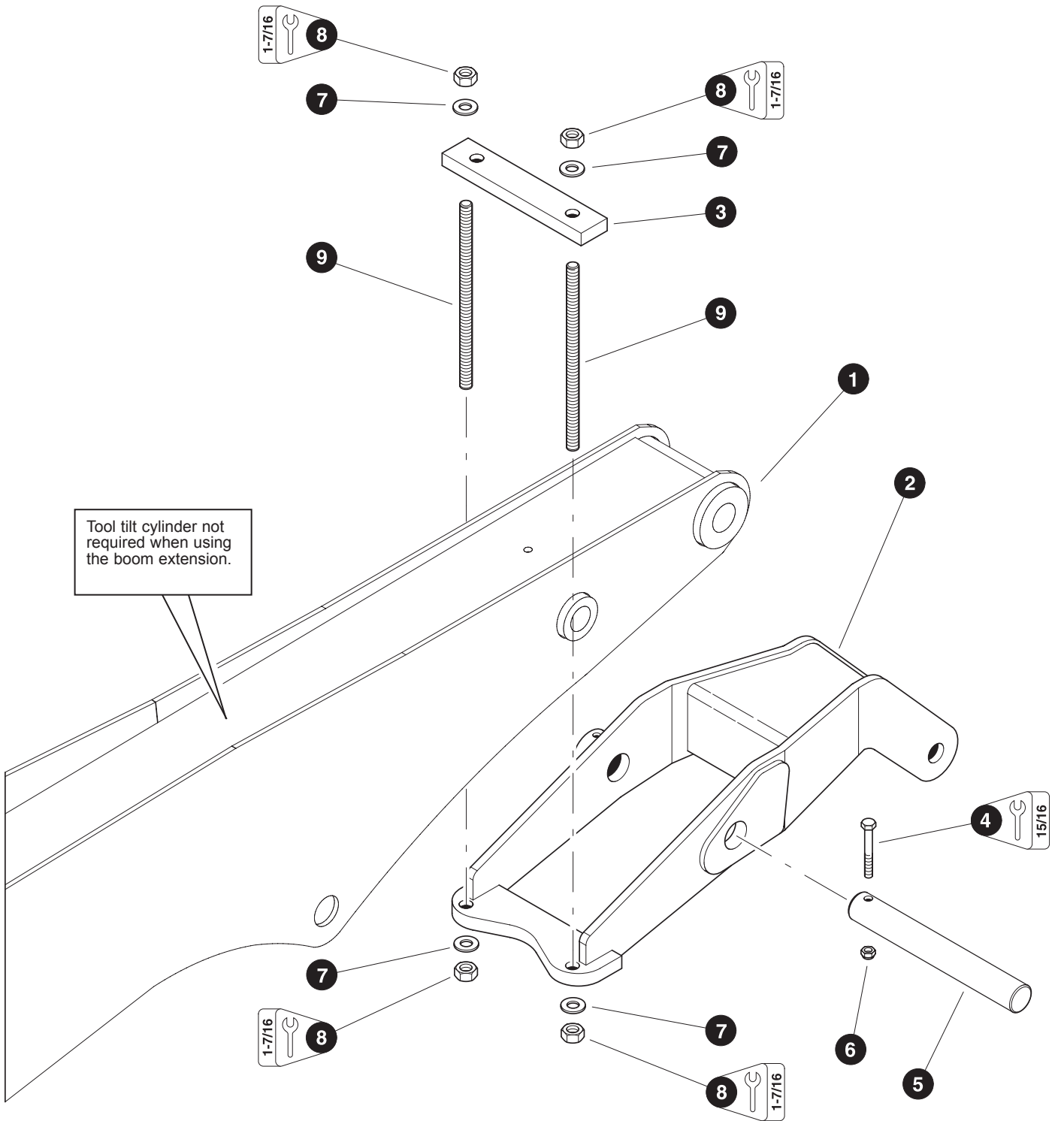
- ☐ Kit or Assembly - includes all items indented underneath.
- 📖 See referenced page for component or assembly breakdown.



BOOM GREASE LINES



| REF | PART # | QTY | DESCRIPTION | SEE SECTION |
|-----|----------|-----|--|-------------|
| 1 | REF. | 1 |  MAIN BOOM CYLINDER..... | HB-4 |
| 2 | REF. | 1 |  STICK BOOM CYLINDER..... | HB-4 |
| 3 | 15658-HB | 2 | CONNECTOR, straight bulkhead - 2239-2-4S | |
| 4 | 10704-HB | 7 | FITTING, straight grease - 1/8" pipe thread | |
| 5 | 22281-HB | 6 | FITTING, 90° - 5546132 | |
| - | 51977-HB | 1 |  KIT, hose - grease lines - <i>Feller Buncher</i> | |
| 6 | -HB | 2 | HOSE ASSEMBLY 2117.5-02-02PS-04JS | |
| 7 | -HB | 2 | HOSE ASSEMBLY 2072-02-02PS-04JS | |
| 8 | -HB | 1 | HOSE ASSEMBLY 2131-02-02PS-04JS | |
| 9 | -HB | 1 | HOSE ASSEMBLY 2122-02-02PS-04JS | |
| 10 | REF. | 1 |  TOOL CYLINDER | HB-4 |



-  See referenced page for component or assembly breakdown.
-  Kit or Assembly - includes all items indented underneath.



Parts T3276 08/30/2005
12.5

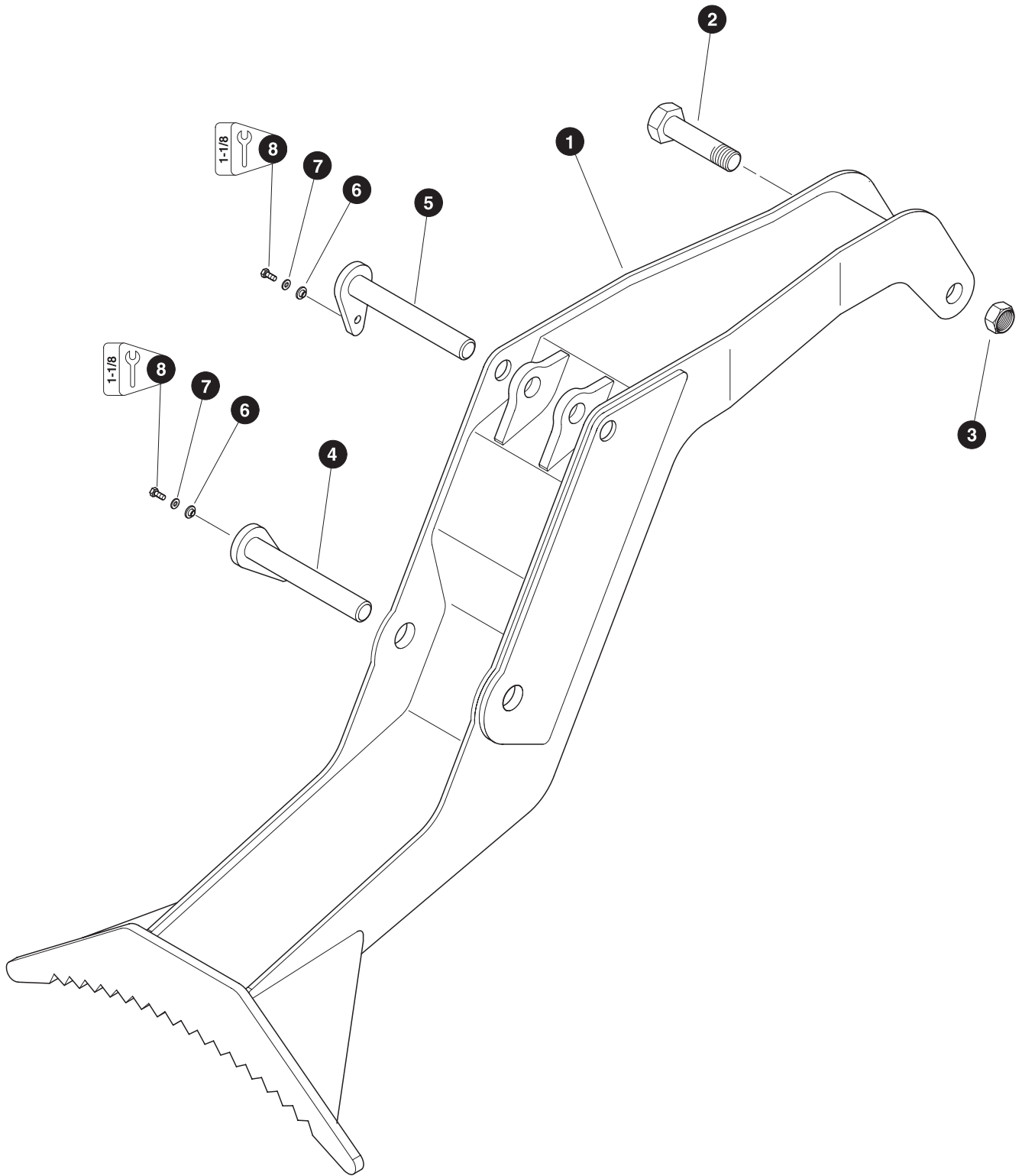
OPTIONAL BOOM EXTENSION INSTALLATION (Used with CTL and Grapple Attachments)

| REF | PART # | QTY | DESCRIPTION | SEE SECTION |
|-----|----------|-----|---|-------------|
| 1 | REF. | 1 |  STICK BOOM ASSEMBLY | HB-2 |
| 2 | 17691-HB | 1 |  WELDMENT, boom extension | |
| 3 | 19024-HB | 1 | BAR, boom extension mounting | |
| 4 | 10838-HB | 1 | BOLT - 5/8" x 5" | |
| 5 | 10748-HB | 1 | PIN - 2-1/2" x 18-1/2" | |
| 6 | 15563-HB | 1 | NUT, nylock - 5/8" | |
| 7 | 15579-HB | 4 | WASHER, SAE flat - 1" | |
| 8 | 18253-HB | 4 | NUT, lock - 1" | |
| 9 | 19025-HB | 2 | ROD, threaded - 1" x 18" (<i>Grade 8 ready rod</i>) | |

-  See referenced page for component or assembly breakdown.
-  Kit or Assembly - includes all items indented underneath.

Section HB-3

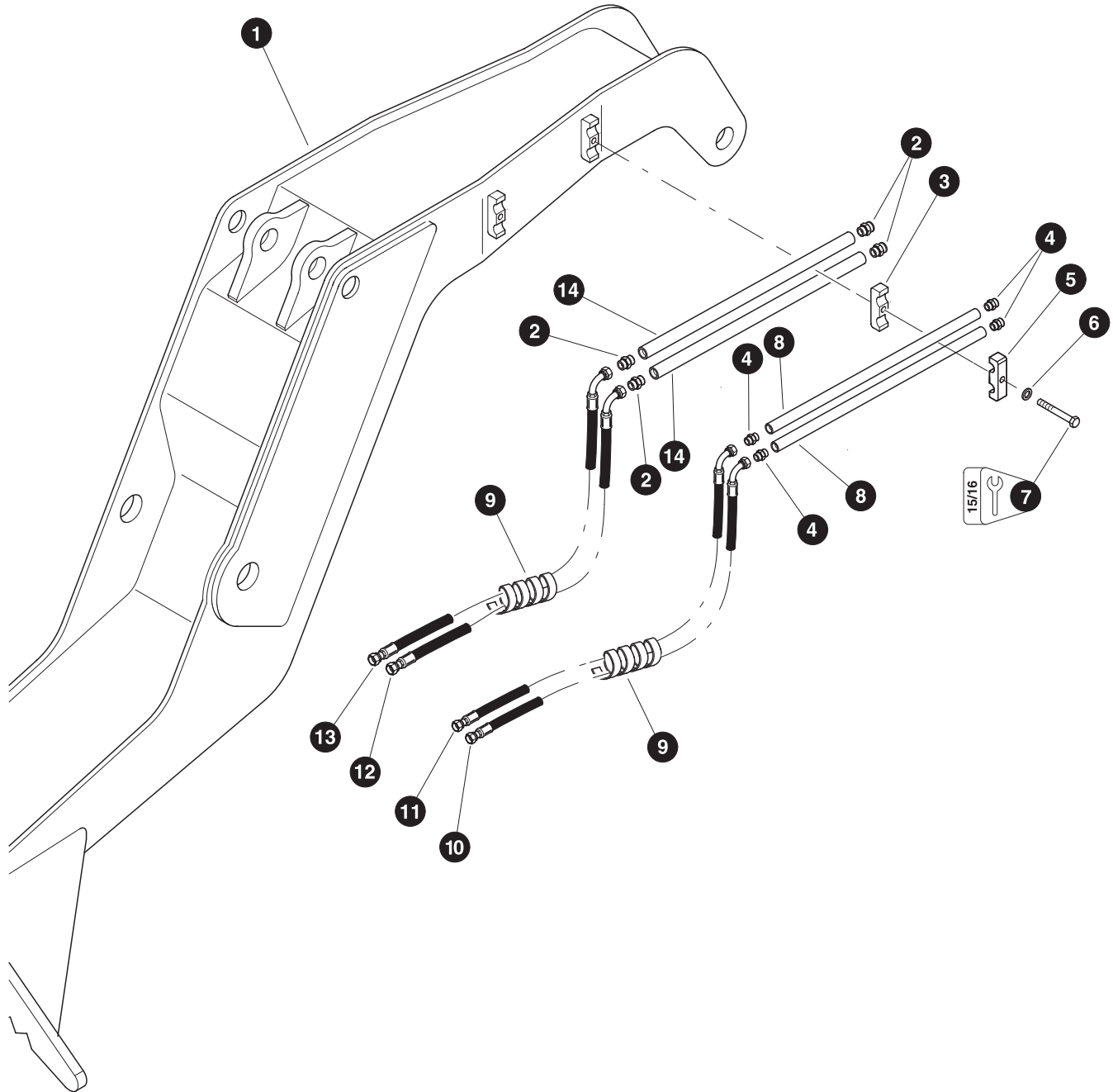
Harvester Booms - Heel Boom (Shovel Logging Adapter)



Parts 00916 12/01/98
12.50



HEEL BOOM WELDMENT INSTALLATION



| REF | PART # | QTY | DESCRIPTION | SEE SECTION |
|------------|---------------|------------|---|--------------------|
| 1 | 51838-HB | 1 | LIVE HEEL-2.5 PIV PIN-1.75 BOOM PIN 630 | |
| 2 | 51138-HB | 1 | PIN, 1-3/4" heel to attachment | |
| 3 | 18402-HB | 1 | NUT, nylock - 1-3/4" | |
| 4 | 19718-HB | 1 | PIN, heel to stick boom | |
| 5 | 19718-HB | 1 | PIN, heel to 4 bar knuckle | |
| 6 | 18570-HB | 2 | WASHER, pin retaining | |
| 7 | 15501-HB | 2 | WASHER, flat - 5/8" | |
| 8 | 15549-HB | 2 | BOLT - 3/4" x 2" | |

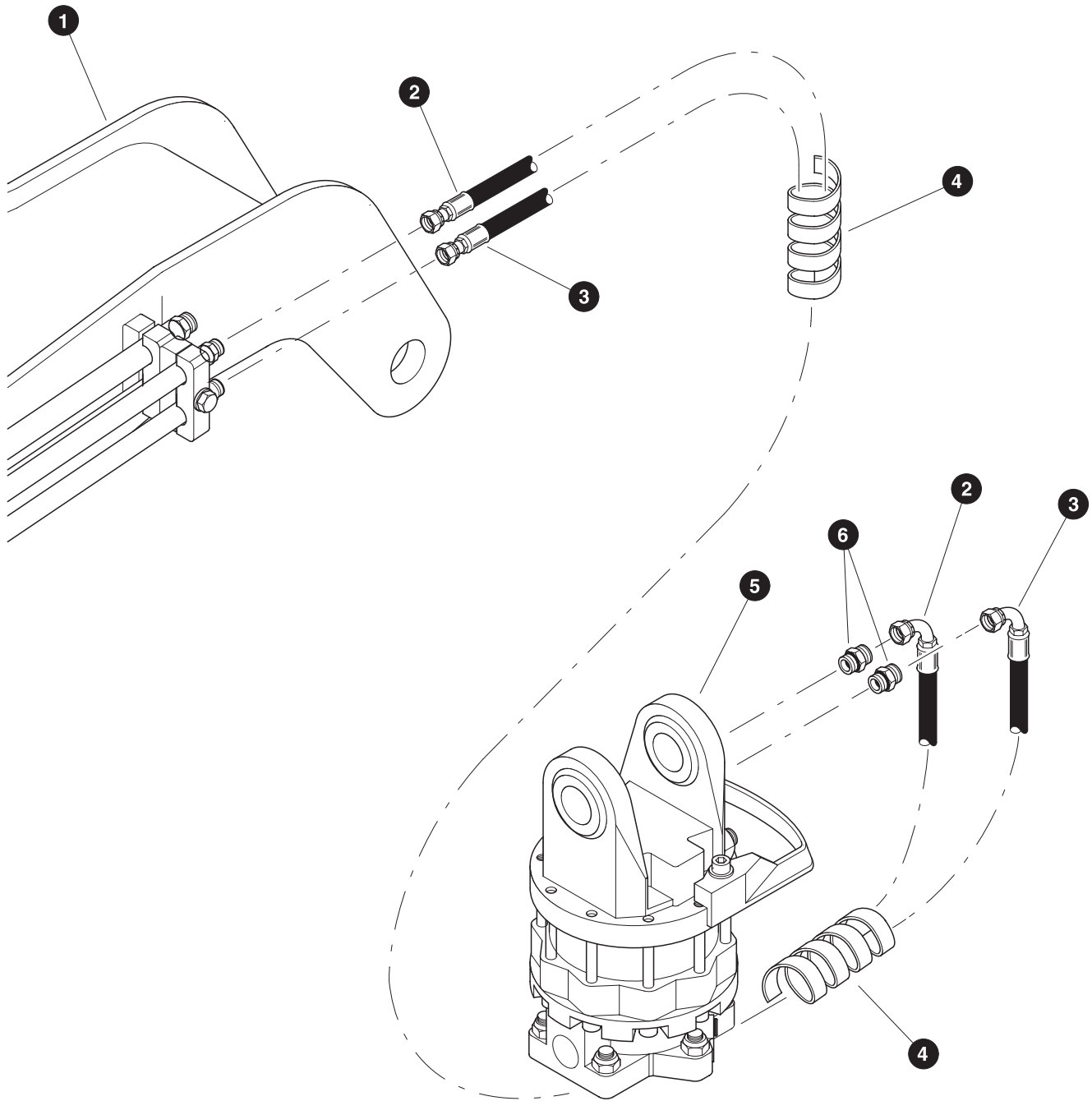


Parts 00913 12/01/2000
12.50

HEEL BOOM TUBELINES & HOSES (With - 1/2" and 3/4" Attachment Supply Lines)

| REF | PART # | QTY | DESCRIPTION | SEE SECTION |
|-----|----------|-----|--|-------------|
| 1 | REF. | 1 |  HEEL BOOM WELDMENT | HB-4 |
| 2 | 15152-HB | 4 | CONNECTOR, straight - FF1852T-1212S | |
| 3 | 19324-HB | 2 | CLAMP, saddle - 3/4" x 3/4" | |
| 4 | 15272-HB | 4 | CLAMP, saddle - 1/2" x 1/2" | |
| 5 | 15117-HB | 4 | CONNECTOR, straight - FF1852T-0808S | |
| 6 | 10771-HB | 2 | WASHER, sae flat 5/8" | |
| 7 | 10719-HB | 2 | BOLT - 5/8" x 4" | |
| 8 | 19495-HB | 2 | TUBELINE - 1/2" x 24" | |
| 9 | 19677-HB | AR |  PROTECTOR, spiral hose wrap - 1-1/4" | |
| 10 | 21536-HB | 1 | HOSE ASSEMBLY - 4072-08-080S-0809 (<i>Heel boom bottom outside tubeline to stick boom tubelines</i>) | |
| 11 | 20488-HB | 1 | HOSE ASSEMBLY - 4075-08-080S-0804 (<i>Heel boom top outside tubeline to stick boom tubelines</i>) | |
| 12 | 21537-HB | 1 | HOSE ASSEMBLY - 4072-12-120S-1204 (<i>Heel boom bottom inside tubeline to stick boom tubelines</i>) | |
| 13 | 21538-HB | 1 | HOSE ASSEMBLY - 4074-12-120S-1209 (<i>Heel boom top inside tubeline to stick boom tubelines</i>) | |
| 14 | 19496-HB | 2 | TUBELINE - 3/4" x 24" | |

 See referenced page for component or assembly breakdown.
 Bulk material - order length required in feet or meters.



Heel boom tubeline connections as viewed from the nose of the heel boom looking towards the rear of the machine.

Valve #2
Work Port "A"










Valve #2
Work Port "B"



Parts 00918 12/01/2000
25.00

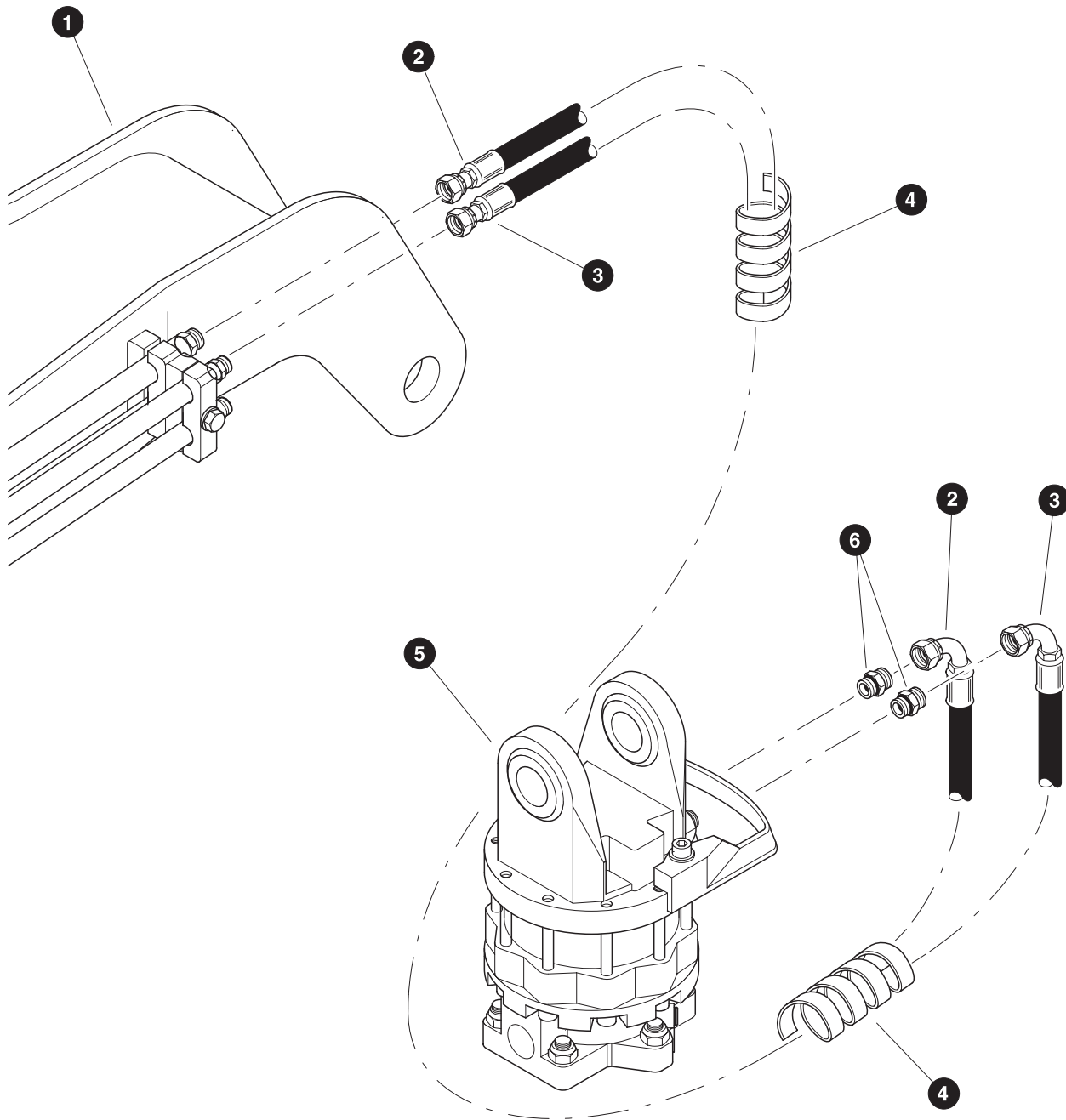
WORK LINES - GRAPPLE OPEN/CLOSE FUNCTION (Heel Boom Tubelines To Grapple Rotator)

| REF | PART # | QTY | DESCRIPTION | SEE SECTION |
|-----|----------|-----|--|-------------|
| 1 | REF. | 1 |  HEEL BOOM WELDMENT | HB-4 |
| 2 | 16407-HB | 1 | HOSE ASSEMBLY - 4038-08-080S-0809 (<i>Heel boom top outside tubeline to grapple outer engine-side port</i>) | |
| 3 | 21535-HB | 1 | HOSE ASSEMBLY - 4037-08-080S-0809 (<i>Heel boom bottom outside tubeline to grapple middle engine-side port</i>) | |
| 4 | 19677-HB | AR |  PROTECTOR, spiral hose wrap - 1-1/4" | |
| 5 | REF. | 1 |  GRAPPLE BUCKET ROTATOR (<i>See Note Below</i>) | |
| 6 | REF. | 2 |  CONNECTOR, straight (<i>See Note Below</i>) | |

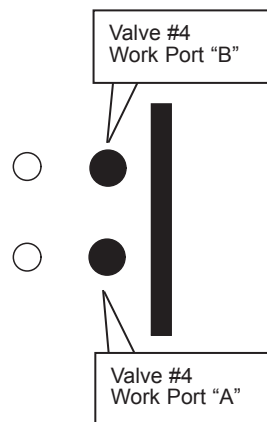
-  See referenced page for component or assembly breakdown.
-  Bulk material - order length required in feet or meters.
-  Kit or Assembly - includes all items indented underneath.

Note:

Reference product manuals supplied by grapple manufacturer.







Heel boom tubeline connections as viewed from the nose of the heel boom looking towards the rear of the machine.



Parts 00917 12/01/2000
25.00

WORK LINES - GRAPPLE ROTATE FUNCTION (Heel Boom Tubelines To Grapple Rotator)

| REF | PART # | QTY | DESCRIPTION | SEE SECTION |
|-----|----------|-----|--|-------------|
| 1 | REF. | 1 |  HEEL BOOM WELDMENT | HB-4 |
| 2 | 21533-HB | 1 | HOSE ASSEMBLY - 4038-12-120S-1209 (<i>Heel boom top inside tubeline to grapple outer engine-side port</i>) | |
| 3 | 21533-HB | 1 | HOSE ASSEMBLY - 4035-12-120S-1209 (<i>Heel boom bottom inside tubeline to grapple middle engine-side port</i>) | |
| 4 | 19677-HB | AR |  PROTECTOR, spiral hose wrap - 1-1/4" | |
| 5 | REF. | 1 |  GRAPPLE BUCKET ROTATOR (<i>See Note Below</i>) | |
| 6 | REF. | 2 | CONNECTOR, straight (<i>See Note Below</i>) | |

 See referenced page for component or assembly breakdown.

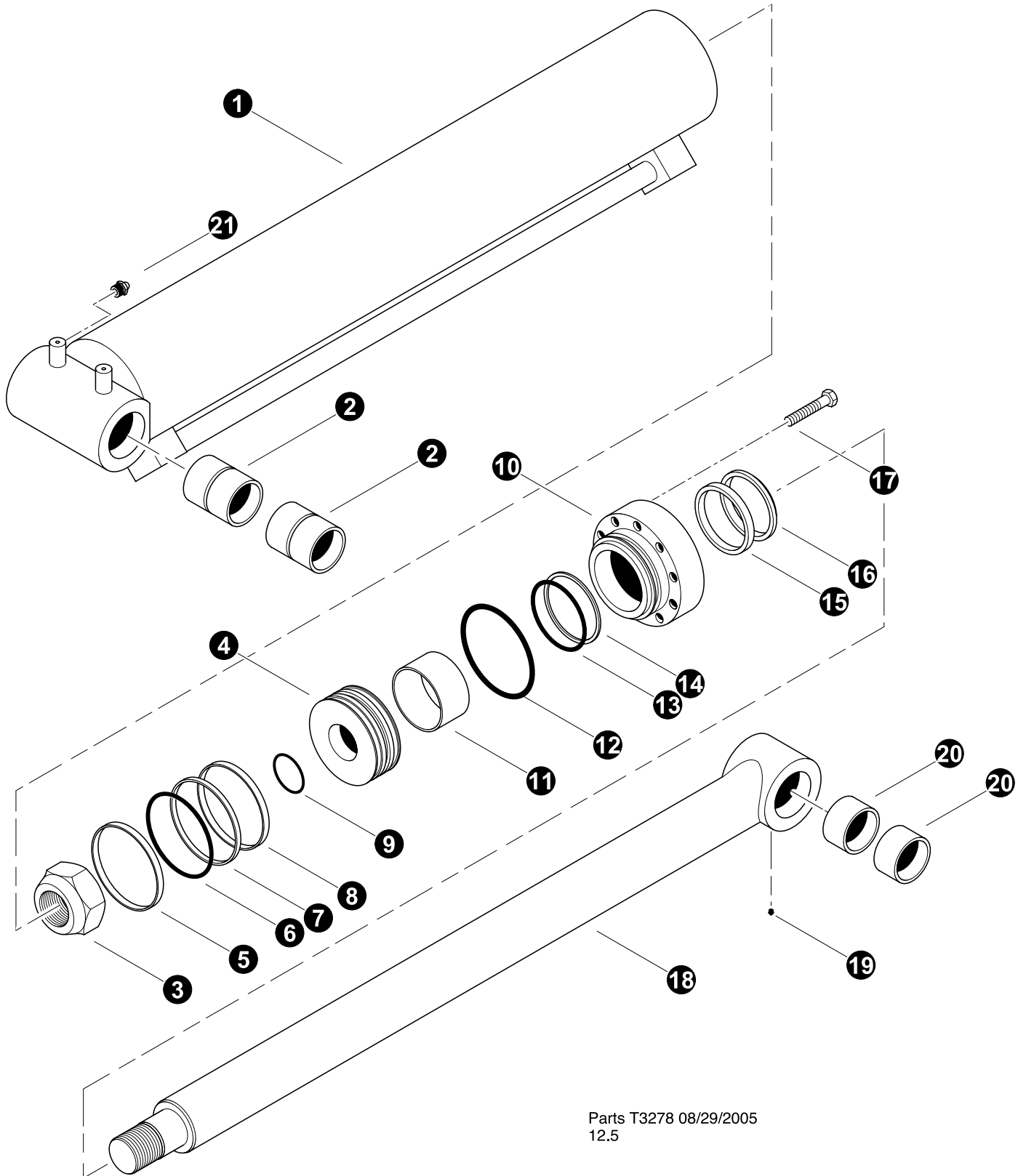
 Bulk material - order length required in feet or meters.

Note:

Reference product manuals supplied by grapple manufacturer.

Section HB-4

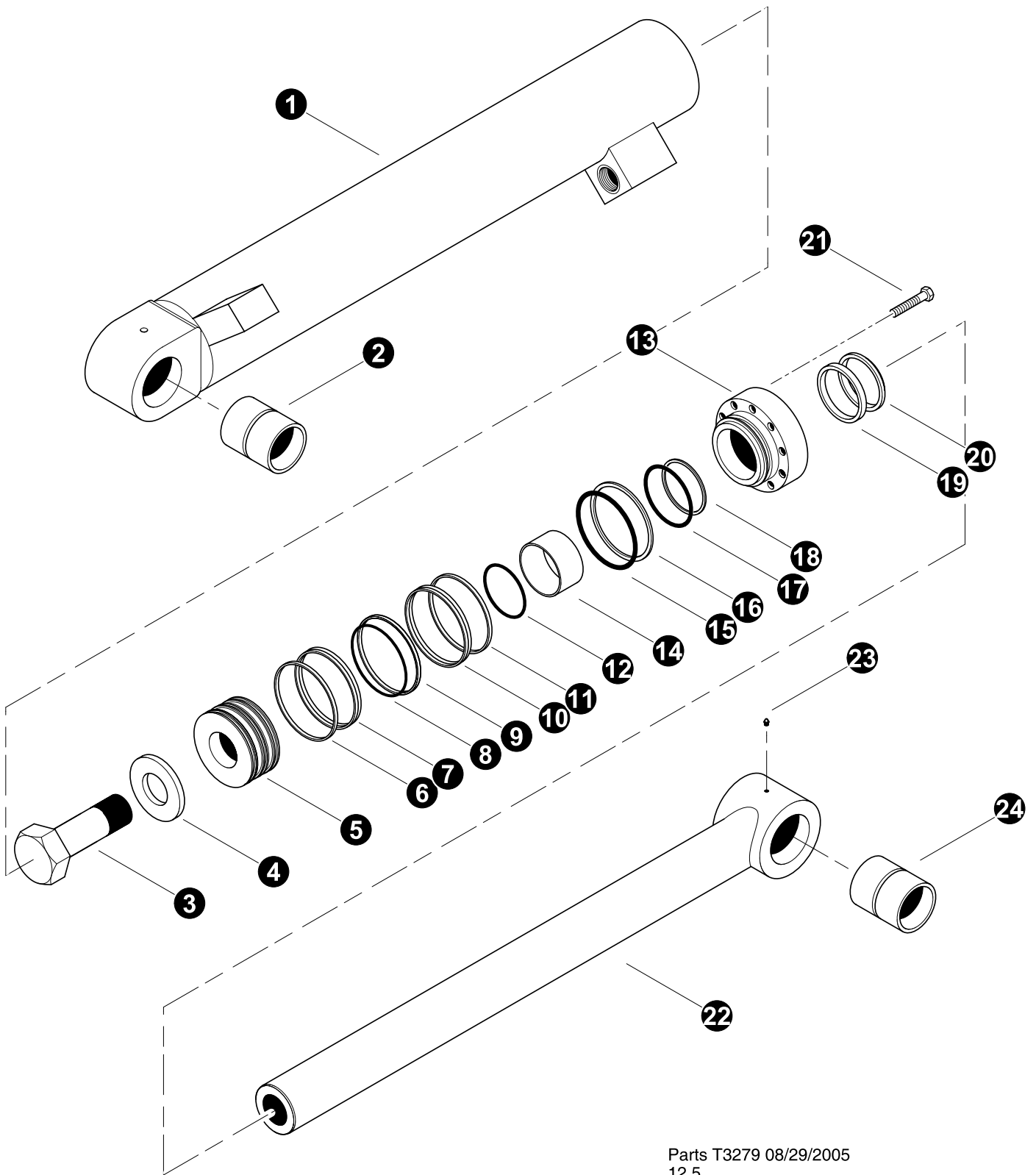
Harvester Booms - Cylinders



MAIN BOOM (HOIST) CYLINDER - 6"**(Used on machines built after 07/18/05)**

| REF | PART # | QTY | | DESCRIPTION | SEE SECTION |
|-----|------------|-----|---|---|-------------|
| - | 51975-FB | 1 | ☐ | MAIN BOOM CYLINDER ASSEMBLY | |
| 1 | 203314B-FB | 1 | ☐ | BARREL ASSEMBLY | |
| 2 | 11706-FB | 2 | | BUSHING - 3" x 4-1/4" | |
| 3 | 712096A-FB | 1 | | NUT, 2.75"-11 (711181A) (ft.lbs (Nm)) | |
| 4 | 400990B-FB | 1 | ☐ | PISTON | |
| 5 | NSS | 1 | ⌘ | RING, piston wear | |
| 6 | NSS | 1 | ⌘ | O-RING, piston seal backup | |
| 7 | NSS | 1 | ⌘ | RING, piston wear | |
| 8 | NSS | 1 | ⌘ | RING, piston wear | |
| 9 | NSS | 1 | ⌘ | O-RING, piston seal | |
| 10 | 501040B-FB | 1 | ☐ | BEARING, rod | |
| 11 | NSS | 1 | ⌘ | RING, rod bearing wear | |
| 12 | NSS | 1 | ⌘ | O-RING, rod bearing - outer | |
| 13 | NSS | 1 | ⌘ | RING, rod bearing o-ring backup | |
| 14 | NSS | 1 | ⌘ | O-RING, rod seal backup | |
| 15 | NSS | 1 | ⌘ | U-CUP, rod bearing | |
| 16 | NSS | 1 | ⌘ | WIPER, rod | |
| 17 | 711001A-FB | 12 | | BOLT - 5/8" x 2-1/4" (175 ft.lbs (233 Nm)) | |
| 18 | 301981B-FB | 1 | ☐ | ROD ASSEMBLY | |
| 19 | 10704-HB | 1 | | FITTING, straight grease - 1/8" pipe thread | |
| 20 | 42486-HB | 2 | | BUSHING - 3.5" X 3.0" X 3.0" UNDERSIZE | |
| 21 | 54106-HB | 1 | | FITTING, straight grease - 1/4" pipe | |
| - | 52125-FB | 1 | | KIT, seal repair - main boom cylinder | |

- ☐ Kit or Assembly - includes all items indented underneath.
 ⌘ Included in seal repair kit Part # 52125-FB.

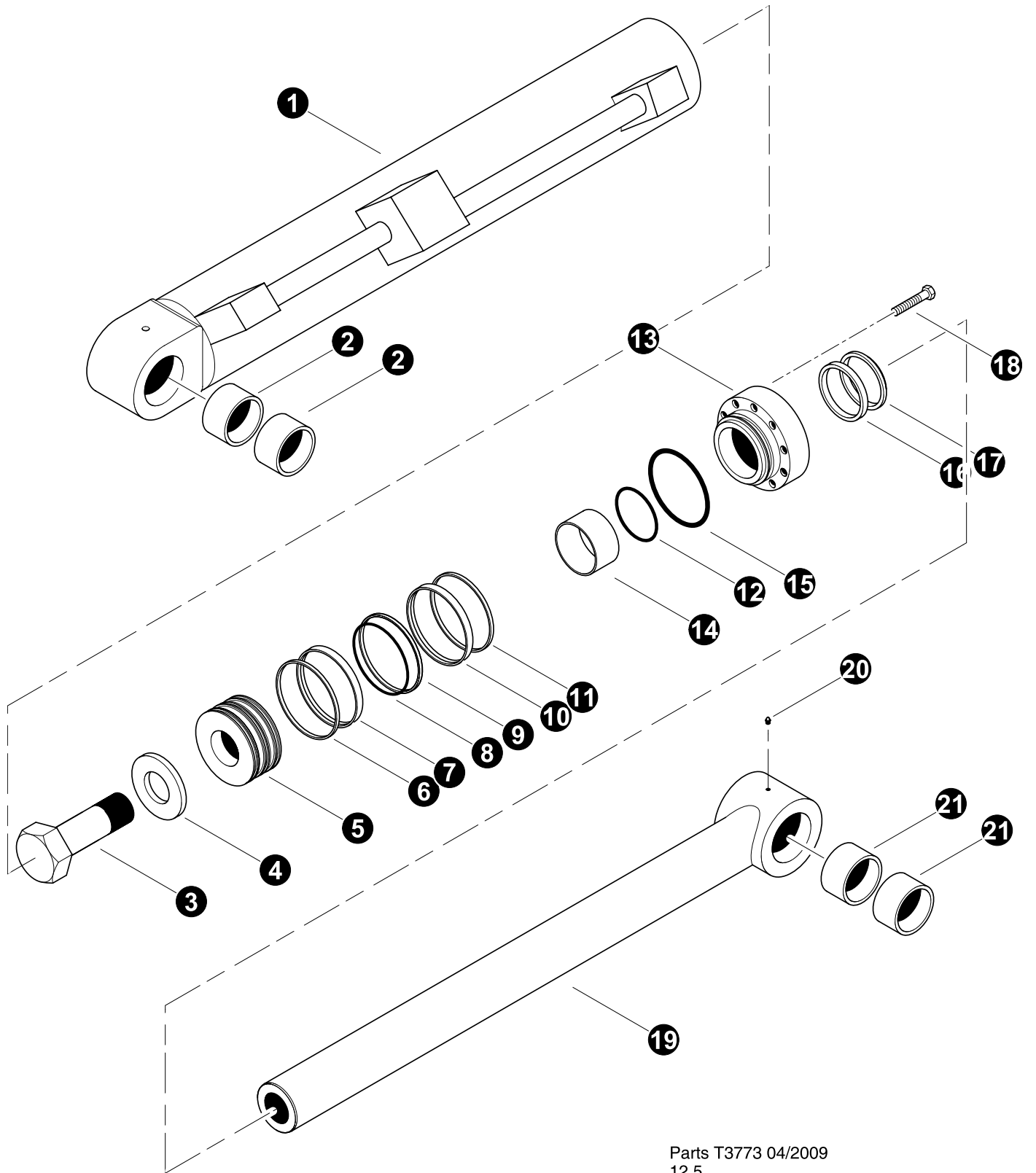


Parts T3279 08/29/2005
12.5

STICK BOOM (JIB) CYLINDER - 5"
(OLD STYLE BARREL)
(Used on machines built after 07/18/05)

| REF | PART # | QTY | | DESCRIPTION | SEE SECTION |
|-----|----------|-----|---|--|-------------|
| - | 51976-HB | 1 | ☐ | STICK BOOM CYLINDER ASSEMBLY | |
| 1 | -HB | 1 | ☐ | BARREL ASSEMBLY (203320B) | |
| 2 | 11706-HB | 1 | | BUSHING - 3" x 4-1/4" | |
| 3 | 16566-HB | 1 | | NUT, cylinder rod - 2-1/4" (2700 +/- 200 ft.lbs. (3600 +/- 265 Nm)) | |
| 4 | NSS | 1 | ⌘ | RING, piston wear | |
| 5 | NSS | 1 | ⌘ | RING, piston square | |
| 6 | NSS | 1 | ⌘ | RING, piston chem-cast | |
| 7 | NSS | 1 | ⌘ | RING, piston wear | |
| 8 | NSS | 1 | ⌘ | O-RING, piston | |
| 9 | 19574-HB | 1 | | PISTON | |
| 10 | NSS | 1 | ⌘ | RING, rod bearing wear | |
| 11 | NSS | 1 | ⌘ | O-RING, rod bearing | |
| 12 | NSS | 1 | ⌘ | RING, rod bearing back-up | |
| 13 | 16567-HB | 1 | | BEARING, rod | |
| 14 | 10720-HB | 10 | | BOLT - 5/8" x 3" (175 ft.lbs (233 Nm)) | |
| 15 | NSS | 1 | ⌘ | U-CUP, rod bearing | |
| 16 | NSS | 1 | ⌘ | WIPER, rod | |
| 17 | 18280-HB | 1 | ☐ | ROD ASSEMBLY | |
| 18 | 11706-HB | 1 | | BUSHING - 3" x 4-1/4" | |
| 19 | 10704-HB | 1 | | FITTING, straight grease - 1/8" pipe thread | |
| - | 52117-HB | 1 | | KIT, seal repair - stick boom cylinder (See Note Below) | |

- ☐ Kit or Assembly - includes all items indented underneath.
⌘ Included in seal repair kit Part # 52117-HB.

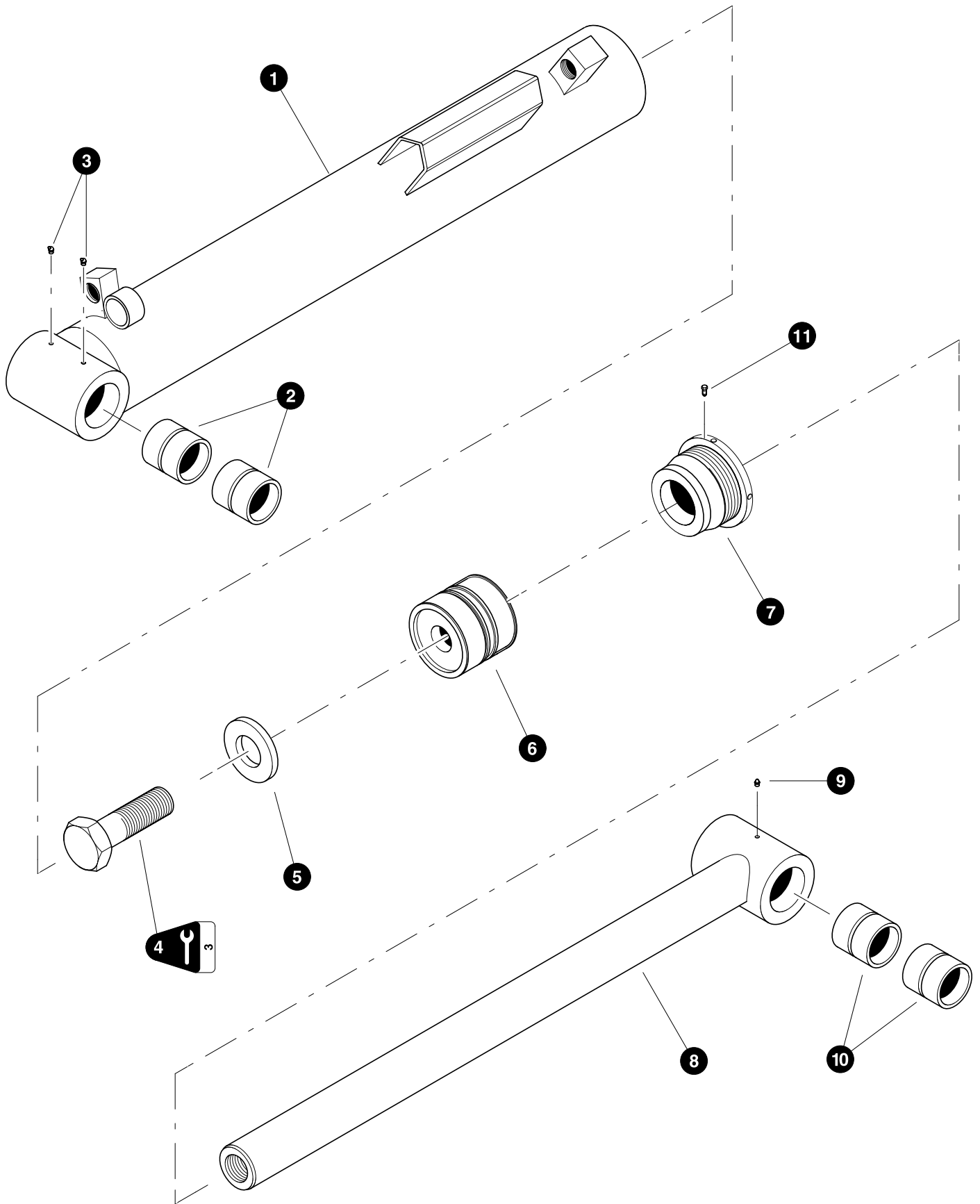


Parts T3773 04/2009
12.5

STICK BOOM (JIB) CYLINDER - 5"
(UPDATED BARREL)
(Used on machines built after 07/18/05)

| REF | PART # | QTY | | DESCRIPTION | SEE SECTION |
|-----|------------|-----|---|---|-------------|
| - | 51976-HB | 1 | ☐ | STICK BOOM CYLINDER ASSEMBLY 150810B | |
| 1 | 52880-HB | 1 | ☐ | BARREL ASSEMBLY (203320B) | |
| 2 | 42486-HB | 2 | | BUSHING - 3.5" X 3.0" X 3.0" UNDERSIZE | |
| 3 | 19956-HB | 1 | | BOLT, cylinder rod - 2" -12UN" (2700 +/- 200 ft.lbs. (3600 +/- 265 Nm)) (USE LOCTITE #242) | |
| 4 | 718032A-HB | 1 | | WASHER, | |
| 5 | 53904-HB | | | PISTON | |
| 6 | NSS | 1 | ⌘ | RING, piston seal | |
| 7 | NSS | 1 | ⌘ | RING, piston wear | |
| 8 | NSS | 1 | ⌘ | O-RING, piston seal backup | |
| 9 | NSS | 1 | ⌘ | RING, piston seal | |
| 10 | NSS | 1 | ⌘ | RING, piston wear | |
| 11 | NSS | 1 | ⌘ | RING, piston seal | |
| 12 | NSS | 1 | ⌘ | O-RING | |
| 13 | 53905-HB | 1 | | BEARING, rod | |
| 14 | NSS | 1 | ⌘ | RING, rod bearing wear | |
| 15 | NSS | 1 | ⌘ | O-RING, rod bearing | |
| 16 | NSS | 1 | ⌘ | U-CUP, rod bearing | |
| 17 | NSS | 1 | ⌘ | WIPER, rod | |
| 18 | 711001A-HB | 1 | | BOLT, rod bearing (175 +/- 5 ft.lbs. (237 Nm)) | |
| 19 | 53903-HB | 1 | ☐ | ROD ASSEMBLY (301980B) | |
| 20 | 10704-HB | 1 | | FITTING, straight grease - 1/8" pipe thread | |
| 21 | 42486-HB | 2 | | BUSHING - 3.5" X 3.0" X 3.0" UNDERSIZE | |
| - | 52117-HB | 1 | | KIT, seal repair - stick boom cylinder (See Note Below) | |

- ☐ Kit or Assembly - includes all items indented underneath.
⌘ Included in seal repair kit Part # 52117-HB.



Parts T2787 08/01/2003
18.75

TOOL TILT CYLINDER (Ram Rod)

Early 2005 machines only

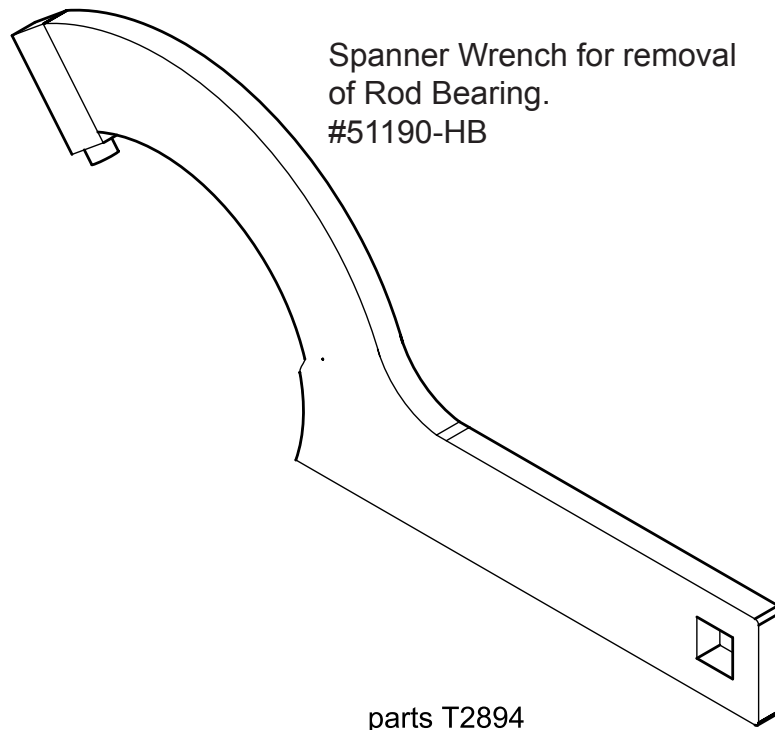
check part number on base end of cylinder barrel for identification

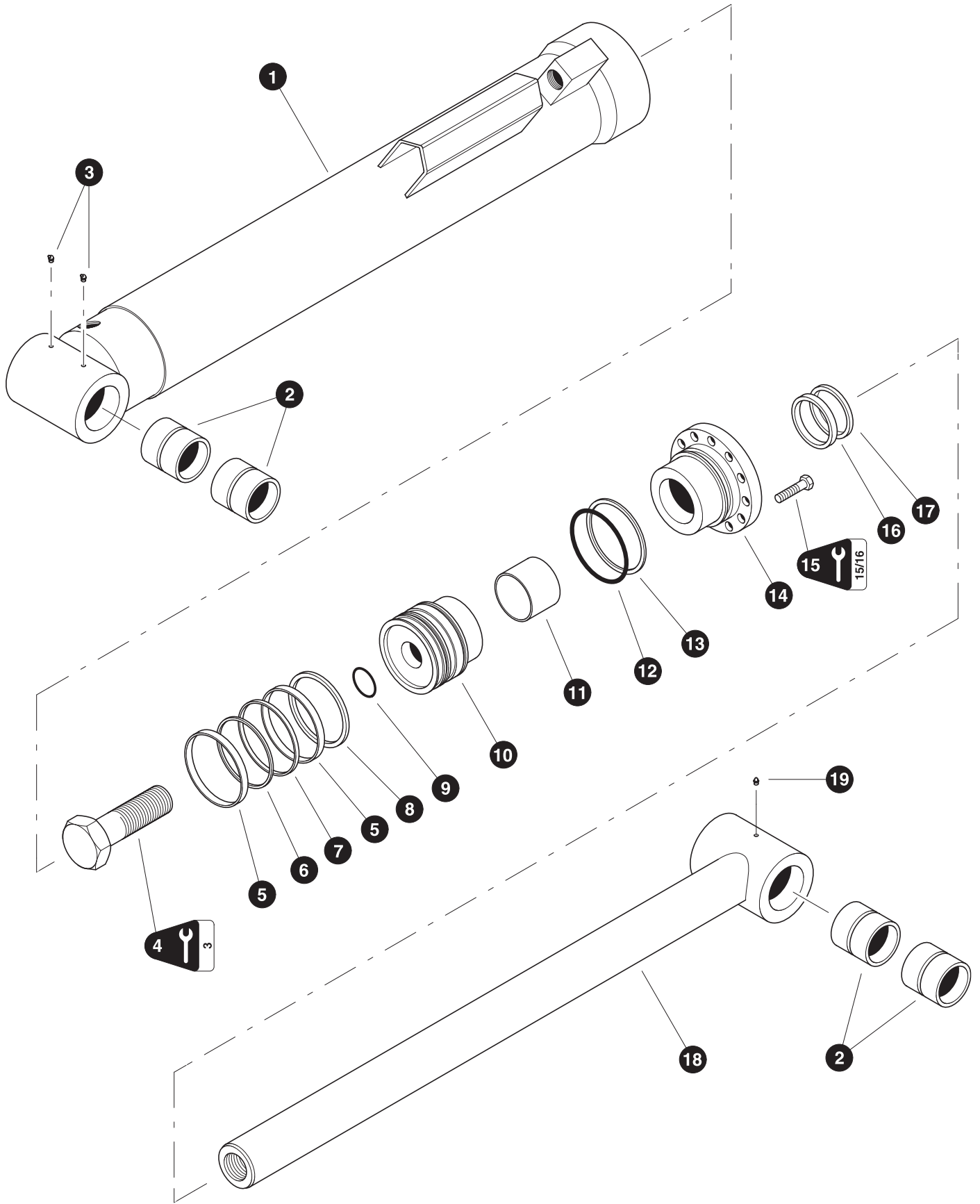
| REF | PART # | QTY | DESCRIPTION | SEE SECTION |
|-----|----------|-----|---|-------------|
| - | 50493-HB | 1 | <input type="checkbox"/> TOOL TILT CYLINDER ASSEMBLY | |
| 1 | 51072-HB | 1 | <input type="checkbox"/> BARREL ASSEMBLY | |
| 2 | 14241-HB | 2 | BUSHING - 2-1/2" x 3" | |
| 3 | 15683-HB | 2 | FITTING, 45 grease - 1/8" pipe thread | |
| 4 | 51073-HB | 1 | BOLT, cylinder rod - 2" x 4" (2300 ft-lbs(+ / - 230)) (lube threads with high tempature lubricant before assembly) | |
| 5 | - - - | 2 | WASHER, FLAT - 2.00-12UNF X 4 G8 (718048) | |
| 6 | 51069-HB | 1 | PISTON | |
| - | NSS | 1 | ⌘ KIT, seal repair - Tool Cyl. Piston | |
| 7 | 51070-HB | 1 | BEARING, rod (see note #1) | |
| - | NSS | 1 | ⌘ KIT, seal repair - Tool Cyl Rod Bearing | |
| 8 | 51071-HB | 1 | <input type="checkbox"/> ROD ASSEMBLY | |
| 9 | 10704-HB | 1 | FITTING, straight grease - 1/8" pipe thread | |
| 10 | 14241-HB | 2 | BUSHING - 2-1/2" x 3" | |
| 11 | - - - | 1 | SCREW, self tapping - rod bearing lock (711004) | |
| - | 51068-HB | 1 | KIT, Seal Repair Tool Cyl. | |

- Kit or Assembly - includes all items indented underneath.
 ⌘ Included in seal repair kit Part # 51068-HB.

Note #1

Threads should be thoroughly cleaned and dry. Install lubricated Anti-seize before assembly. Torque head until fully seated against barrel. Increase torque by 100 ft-lbs and apply final torque. Drill and tap #8-32nc X .25 deep between head flange and barrel for locking screw.





Parts 02132 03/16/2001
18.75

TOOL TILT CYLINDER**(Used With 4-Bar Linkage)(Jarp)**

| REF | PART # | QTY | | DESCRIPTION | SEE SECTION |
|-----|----------|-----|---|--|-------------|
| - | 24006-HB | 1 | ☐ | CYLINDER, TOOL - FB (JARP) | |
| 1 | 22985-HB | 1 | ☐ | BARREL ASSEMBLY | |
| 2 | 14241-HB | 2 | | BUSHING - 2-1/2" x 3" | |
| 3 | 15683-HB | 2 | | FITTING, 45 grease - 1/8" pipe thread | |
| 4 | 24563-HB | 1 | | BOLT, PISTON RETAINING (2700 +/- 200 ft.lbs. (3600 +/- 265 Nm)) | |
| 5 | NSS | 2 | ⌘ | RING, piston wear | |
| 6 | NSS | 1 | ⌘ | RING, piston square | |
| 7 | NSS | 1 | ⌘ | RING, piston chem-cast | |
| 8 | NSS | 1 | ⌘ | RING, piston wear | |
| 9 | NSS | 1 | ⌘ | O-RING, piston | |
| 10 | 22986-HB | 1 | | PISTON | |
| 11 | NSS | 1 | ⌘ | RING, rod bearing wear | |
| 12 | NSS | 1 | ⌘ | O-RING, rod bearing | |
| 13 | NSS | 1 | ⌘ | RING, rod bearing back-up | |
| 14 | 24562-HB | 1 | | BEARING, rod | |
| 15 | 15681-HB | 12 | | BOLT - 5/8" x 2-1/4" (175 ft.lbs (233 Nm)) | |
| 16 | NSS | 1 | ⌘ | U-CUP, rod bearing | |
| 17 | NSS | 1 | ⌘ | WIPER, rod | |
| 18 | 22537-HB | 1 | ☐ | ROD ASSEMBLY | |
| 19 | 10704-HB | 1 | | FITTING, straight grease - 1/8" pipe thread | |
| - | 22988-HB | 1 | | KIT, seal repair - tool tilt cylinder | |

- ☐ Kit or Assembly - includes all items indented underneath.
 ⌘ Included in seal repair kit Part # 22988-HB.

