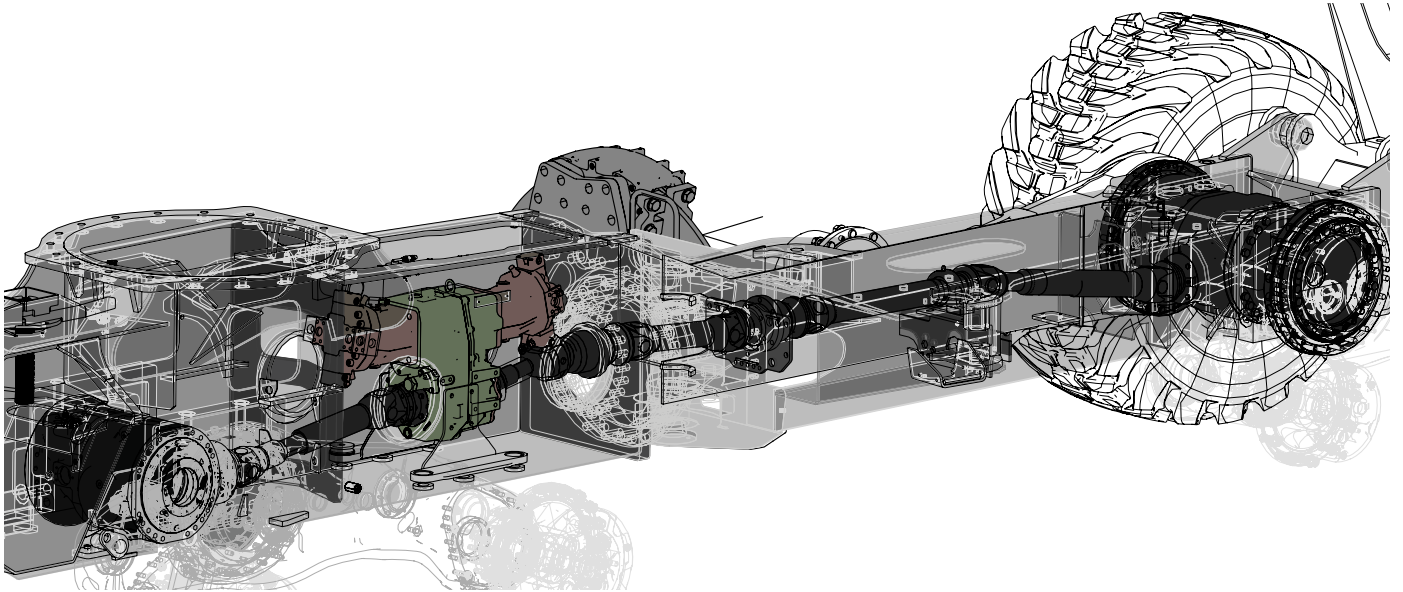


SECTION DR-1

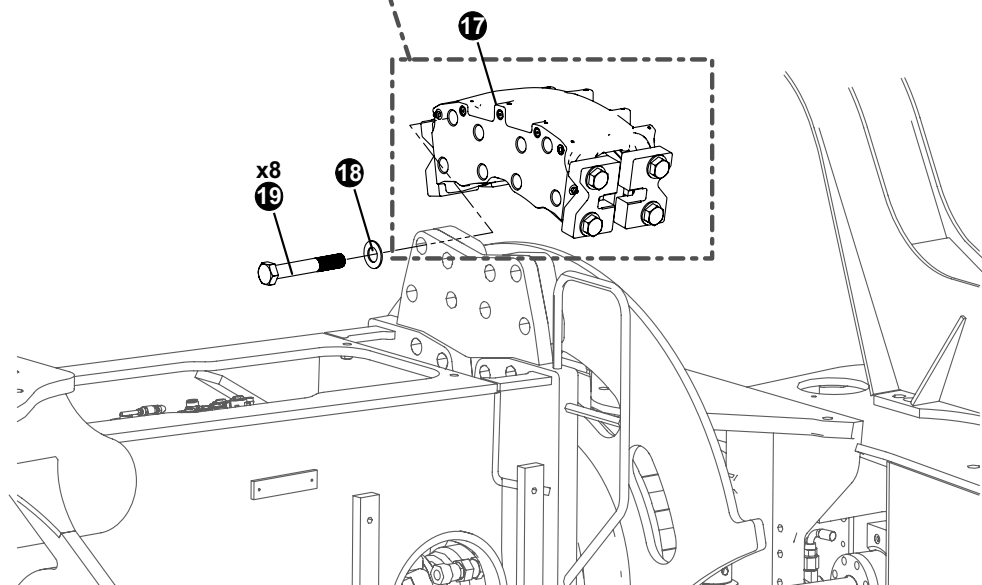
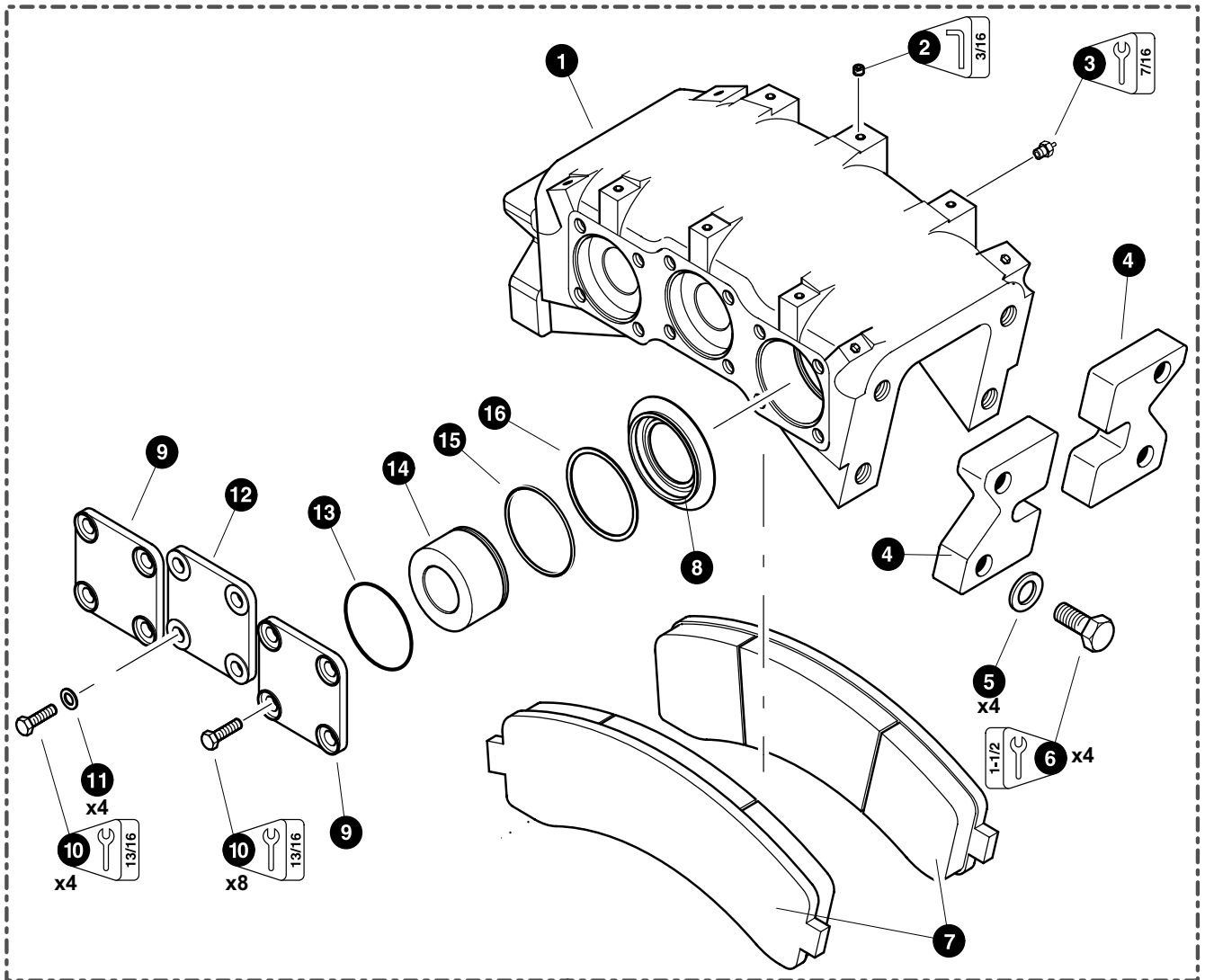
830/840 DRIVE COMPONENT INSTALLATION



DRIVE COMPONENT INSTALLATION

DRIVE COMPONENT INSTALLATION

FRAME LOCK BRAKE ASSEMBLY AND INSTALLATION



DRIVE COMPONENT INSTALLATION

FRAME LOCK BRAKE ASSEMBLY AND INSTALLATION

REF	PART #	QTY	DESCRIPTION	SEE SECTION
17	20953	1	FRAME LOCK BRAKE (Assembled)	
1	NSS	1	HOUSING	
2	-----	13	PLUG	
3	-----	1	SCREW, bleed	
4	-----	4	RETAINER, brake pad	
5	-----	8	WASHER	
6	-----	8	BOLT	
7	24406	1	PAD, brake (pair)	
8	NSS	6 ⌘	BOOT, piston	
9	23445	2	COVER, piston (Machined special to countersink bolt heads)	
10	24088	12	BOLT - 9/16" x 1-1/4"	
11	-----	4	WASHER	
12	23444	1	COVER, piston	
13	NSS	6 ⌘	O-RING, piston cover	
14	24434	6	PISTON, brake caliper	
15	NSS	6 ⌘	SEAL, piston	
16	NSS	6 ⌘	RING, back-up	
-	23113	1	KIT, seal repair - frame lock brake	
18	22531	8	WASHER - 1-1/4"	
19	23351	8	BOLT - 1-1/4" x 4-1/2" NF	



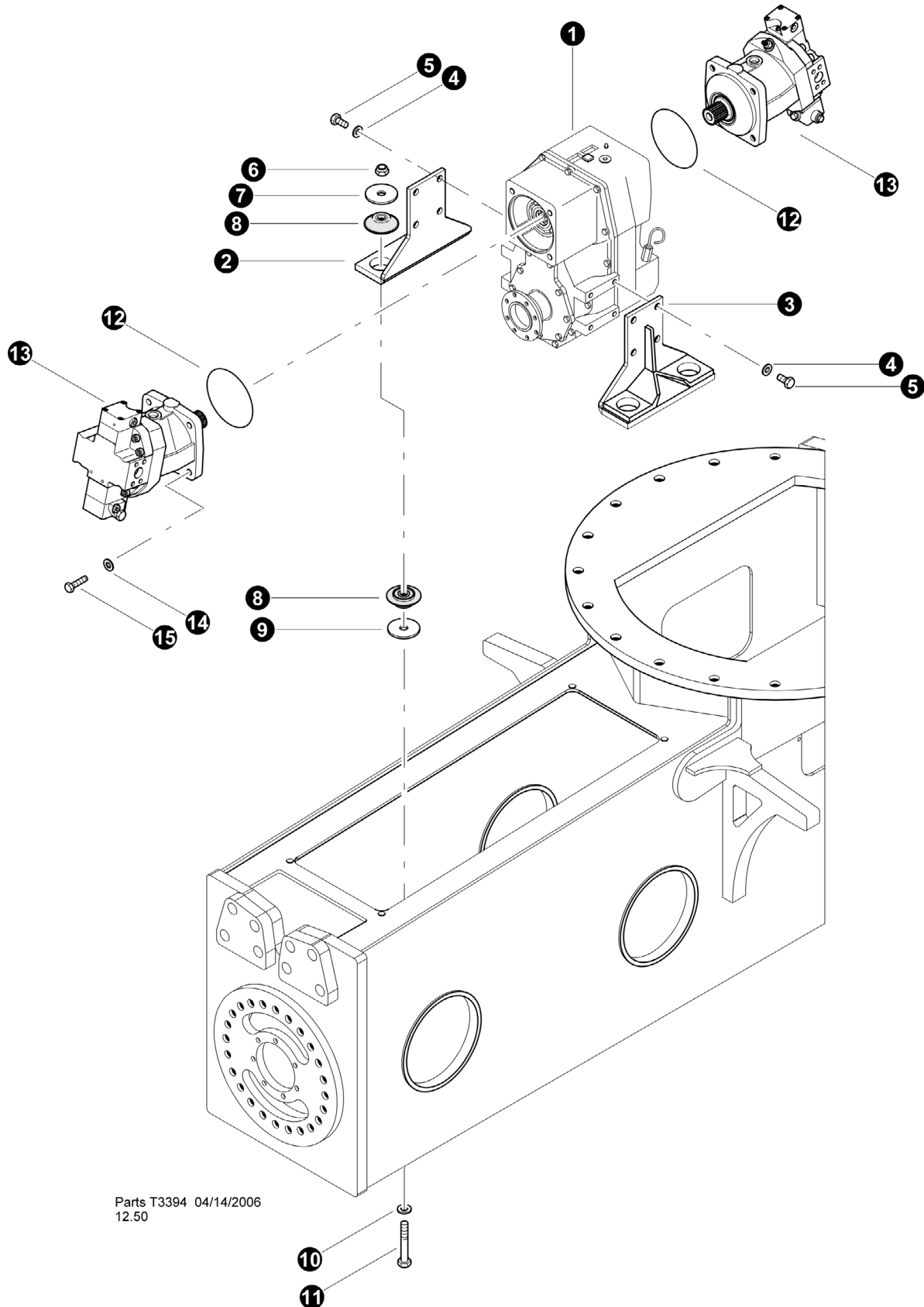
See referenced page for component or assembly breakdown.



Included in seal repair kit Part # 20953.

DRIVE COMPONENT INSTALLATION

TRANSFER CASE/GEARBOX AND MOTOR AND INSTALLATION





Parts T3394 04/14/2006
12.50

DRIVE COMPONENT INSTALLATION

TRANSFER CASE/GEARBOX AND MOTOR AND INSTALLATION

REF	PART #	QTY	DESCRIPTION	SEE SECTION
1	(Click Here)	1	Transfer Case NAF	AX-4
2	52119	1	MOUNT, TRANSMISSION TIM-15 TF810-840	
3	52119	1	MOUNT, TRANSMISSION TIM-15 TF810-840	
4	50447	8	WASHER, FLAT - 16MM	
5	50382	8	BOLT - 16mm 2.00 X 40mm (Torque to 180 ft-lbs) (See Note #1 Below)	
6	10817	4	NUT, lock 3/4"	
7	17918	8	WASHER, isolator mount .875"	
8	17904	8	ISOLATOR	
9	17918	8	WASHER, isolator mount .875"	
10	15550	8	WASHER, SAE flat - 3/4"	
11	10844	4	BOLT - 3/4" x 5"	
12	20967	2	O-RING, WHEEL DRIVE MOTOR PILOT (FWD)	
13	(Click Here)	1	WHEEL DRIVE MOTOR	LH-1
14	42110	8	WASHER, FLAT - 20MM	
15	18525	8	BOLT, - 20mm X 50 mm (See Note #1 Below) (Torque to 180 ft-lbs)	

-  See referenced page for component or assembly breakdown.
-  Kit or Assembly - includes all items indented underneath.

Note #1:

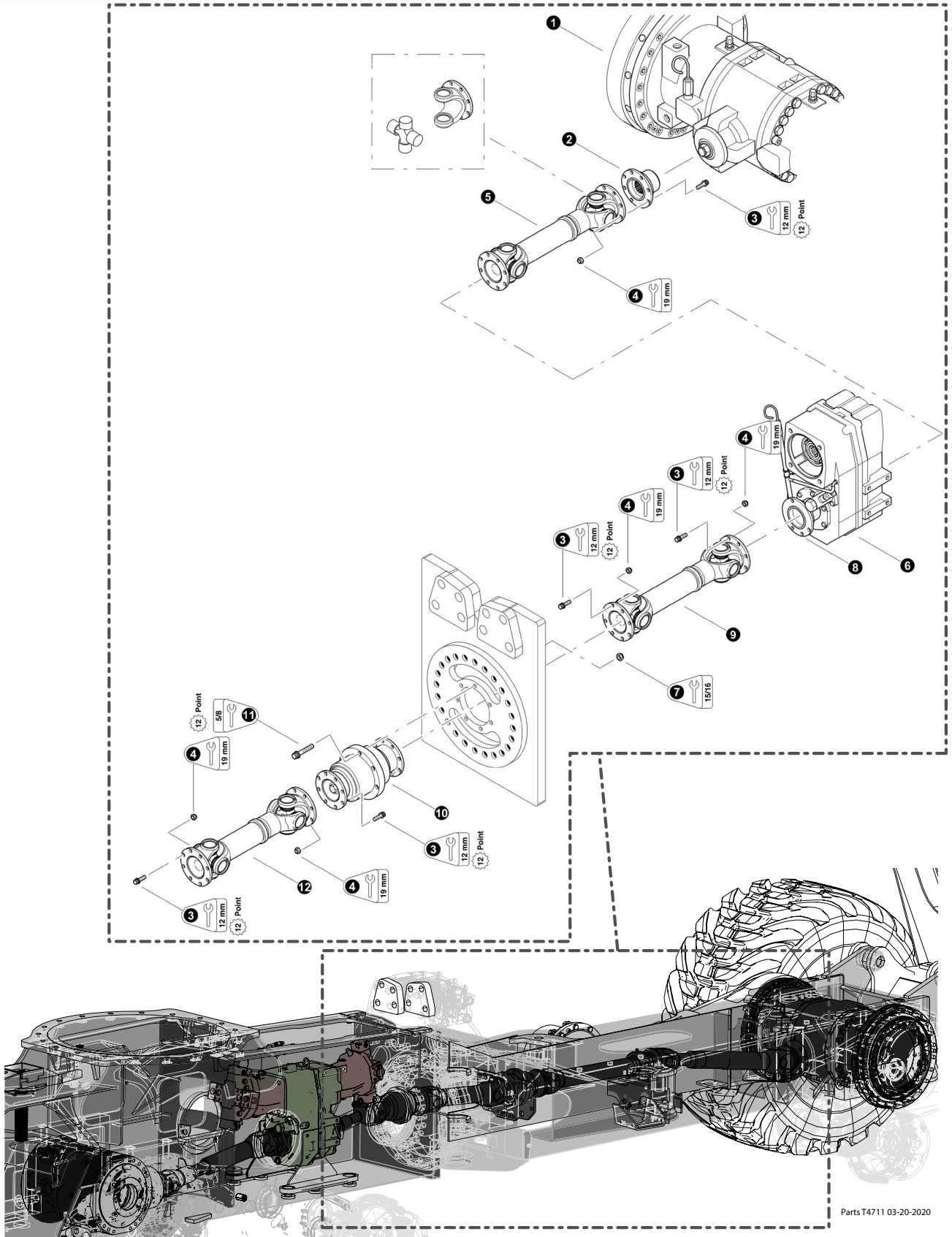
Use Loctite 243 (blue) on threads during installation.

Note #2:

Use Loctite 271 (red) on threads during installation.

DRIVE COMPONENT INSTALLATION





FRONT DRIVE-SHAFT INSTALLATION





Parts T4711 03-20-2020

DRIVE COMPONENT INSTALLATION

FRONT DRIVE-SHAFT INSTALLATION

REF	PART #	QTY	DESCRIPTION	SEE SECTION
1	REF.	1	 FRONT AXLE	AX-1
2	23997	1	YOKE, companion flange - axle (Torque nut to 590 ft lbs.(800 Nm) (see note #2))	
3	50261	48	BOLT, 12 point - 12mm-1.75P x 35mm (See Note #1 Below)	
4	50262	48	NUT, lock - 12mm	
5	50283	1	 DRIVE SHAFT, (Transfer Case to front axle)(464295-61)	
	-----	2	FITTING, 90° grease - 10mm	
	50466	2	KIT, CROSS & BEARING	
	50467	2	YOKE, FLANGE (90mm)	
6	REF	1	Transfer Case NAF	AX-4
7	10816	6	NUT, lock - 5/8"	
8	-FF	2	YOKE, HD flange - NAF Transfercase (7521.238)	
9	23996	1	 DRIVE SHAFT (Transfer Case to Carrier Bearing) (445731-61)	
	-----	2	FITTING, 90° grease - 10mm	
	50466	2	KIT, CROSS & BEARING	
	50467	2	YOKE, FLANGE (90mm)	
10	25218	1	IDLER, driveshaft (HD)	
11	50050	6	BOLT, 12 point - 5/8" x 3" (See Note #1 Below) (Torque to 130 ft.lbs. (175 Nm))	
12	25968	1	 DRIVE SHAFT (Center joint) (20" (503mm) C/L-C/L) (fits all TF front frames with HD driveshafts) (457176-61)	
	-----	2	FITTING, 90° grease - 10mm	
	50466	2	KIT, CROSS & BEARING	
	50467	2	YOKE, FLANGE (90mm)	

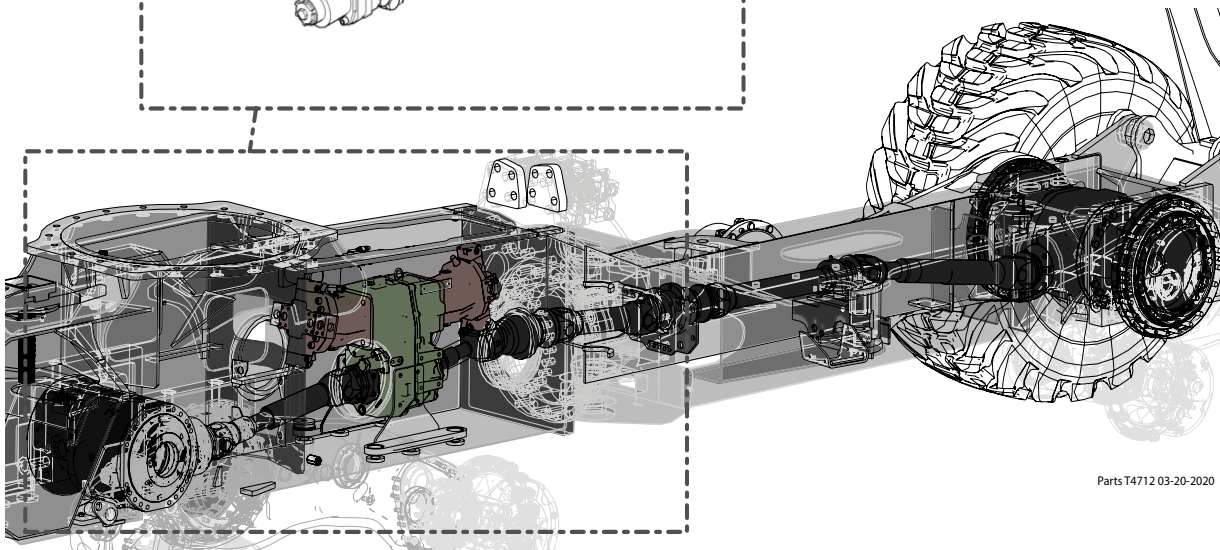
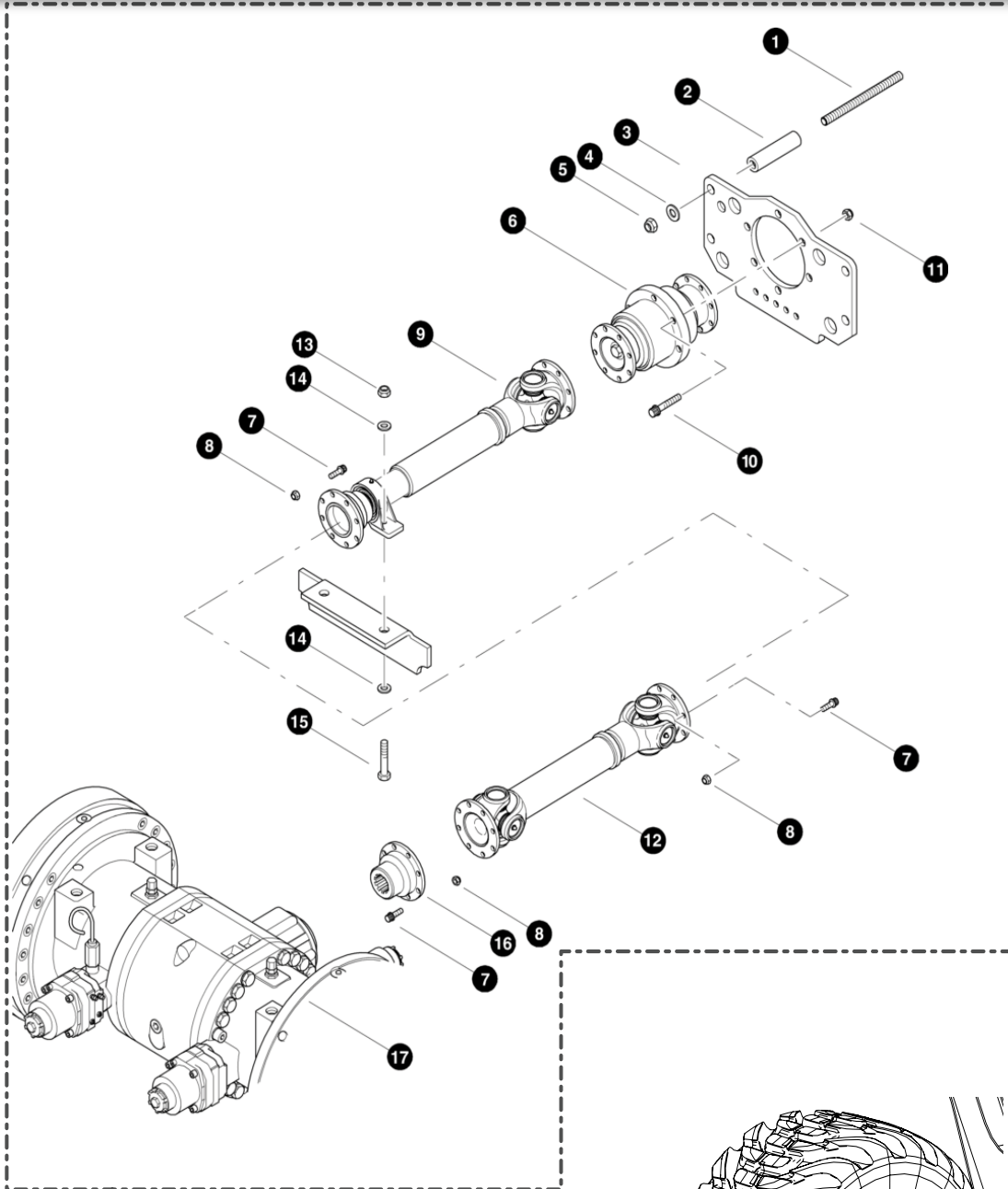
-  See referenced page for component or assembly breakdown.
-  Kit or Assembly - includes all items indented underneath.

Note #1:
Use Loctite 243 (blue) on threads during installation.

Note #2:
Use Loctite 271 (red) on threads during installation.

DRIVE COMPONENT INSTALLATION

DRIVE SHAFT INSTALLATION




Parts T4712 03-20-2020

DRIVE COMPONENT INSTALLATION

DRIVE SHAFT INSTALLATION

REF	PART #	QTY	DESCRIPTION	SEE SECTION
1	26037	4	STUD, 3/4 X 8.5 (see note #2)	
2	80721	4	SPACER	
3	52486	1	BRACKET, bearing mount	
4	15550	4	WASHER, SAE flat 3/4	
5	10817	4	NUT, lock - 3/4"	
6	25218	1	IDLER, driveshaft (HD)	
7	50261	24	BOLT, 12 point - 12mm-1.75P x 35mm (See Note #1 Below)	
8	50262	24	NUT, lock - 12mm	
9	50791	1	<input type="checkbox"/> DRIVE SHAFT (Gearbox to Center) (500793-61)	
	50466	2	KIT, CROSS & BEARING	
	50467	2	YOKE, FLANGE (90mm)	
	51594	1	BEARING, PILLOW BLOCK	
10	50050	6	BOLT, 12 point - 5/8" x 3" (See Note #1 Below)(Torque to 130 ft.lbs. (175 Nm))	
11	10816	6	NUT, lock - 5/8"	
12	50791	1	<input type="checkbox"/> DRIVE SHAFT (Gearbox to Center) (498347-61)	
	50466	2	KIT, CROSS & BEARING	
	50467	2	YOKE, FLANGE (90mm)	
13	10816	2	NUT, LOCK - .625"	
14	23210	4	WASHER, SAE FLAT - .625" (EXTRA THICK)	
15	15517	2	BOLT - .625" X 2.5"	
16	23997	1	YOKE, companion flange - AXLE	
17	(Click Here)	1	<input type="checkbox"/> AXLE ASSY.....	AX

-  See referenced page for component or assembly breakdown.
- Kit or Assembly - includes all items indented underneath.

Note #1:

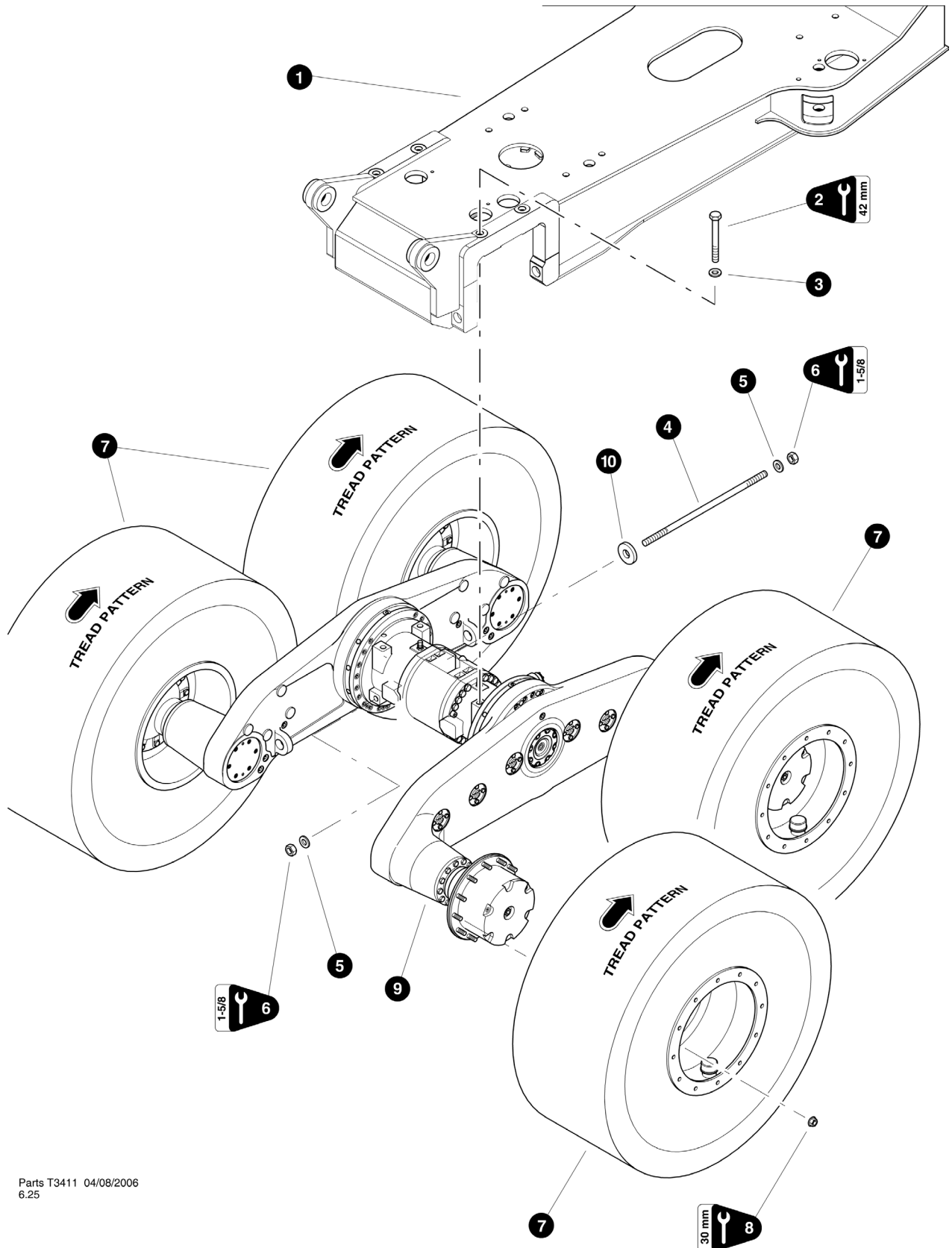
Use Loctite 242 (blue) during installation.

Note #2:

Use Loctite 262 (red) during installation.

DRIVE COMPONENT INSTALLATION




REAR AXLE INSTALLATION




Parts T3411 04/08/2006
6.25

DRIVE COMPONENT INSTALLATION

REAR ALXE INSTALLATION

REF	PART #	QTY	DESCRIPTION	SEE SECTION
1	(Click Here)	1	 REAR FRAME WELDMENT	L-2-1
2	23567	4	BOLT - 30mm-3.5P x 220mm (Torque to 1100 ft.lbs. (1465 Nm))	
3	23990	4	WASHER, SAE FLAT - 1.25" (EXTRA THICK)	
4	52485	2	STUD - 1.25" - 7 X 27.50" (Torque to 1200 ft.lbs. (1600 Nm))	
5	22531	4	WASHER, SAE flat - 1-1/4"	
6	23989	4	NUT, lock - 1-1/4" (Torque to 1200 ft.lbs. (1600 Nm))	
7	(Click Here)	4	 WHEEL ASSEMBLY	AX-5
8	19361	48	NUT, lug (Torque to 600 ft.lbs. (800 Nm))	
9	(Click Here)	1	 REAR AXLE.....	AX-1
10	24003	2	SPACER, axle spreader box	

 See referenced page for component or assembly breakdown.

PAGE INTENTIONALLY LEFT BLANK