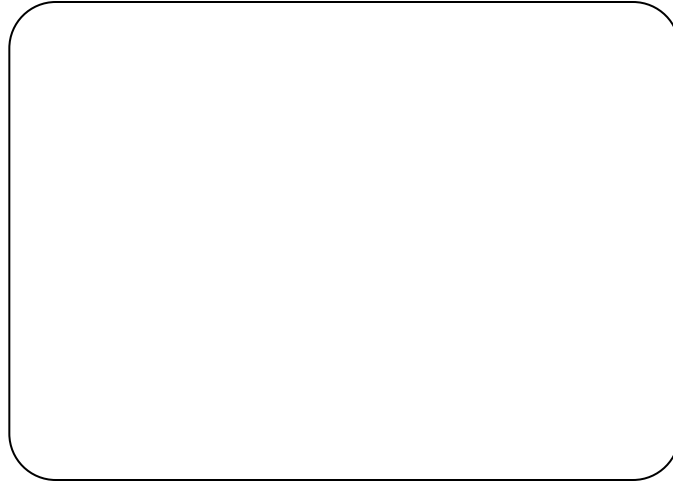
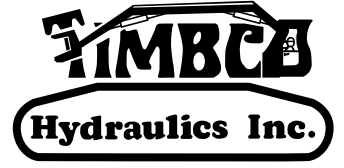
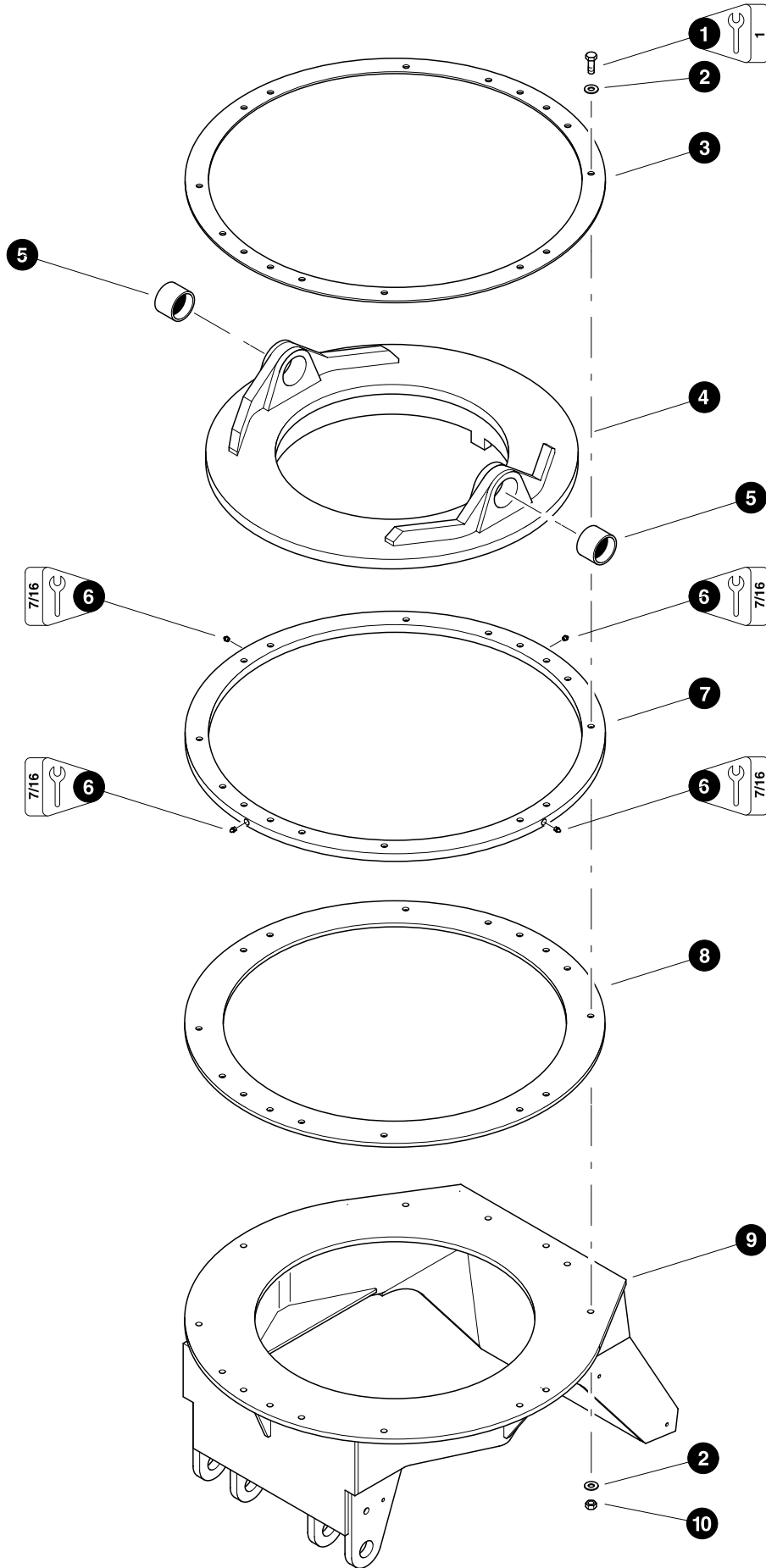


Section CB-1



Clam Bunk - Structural



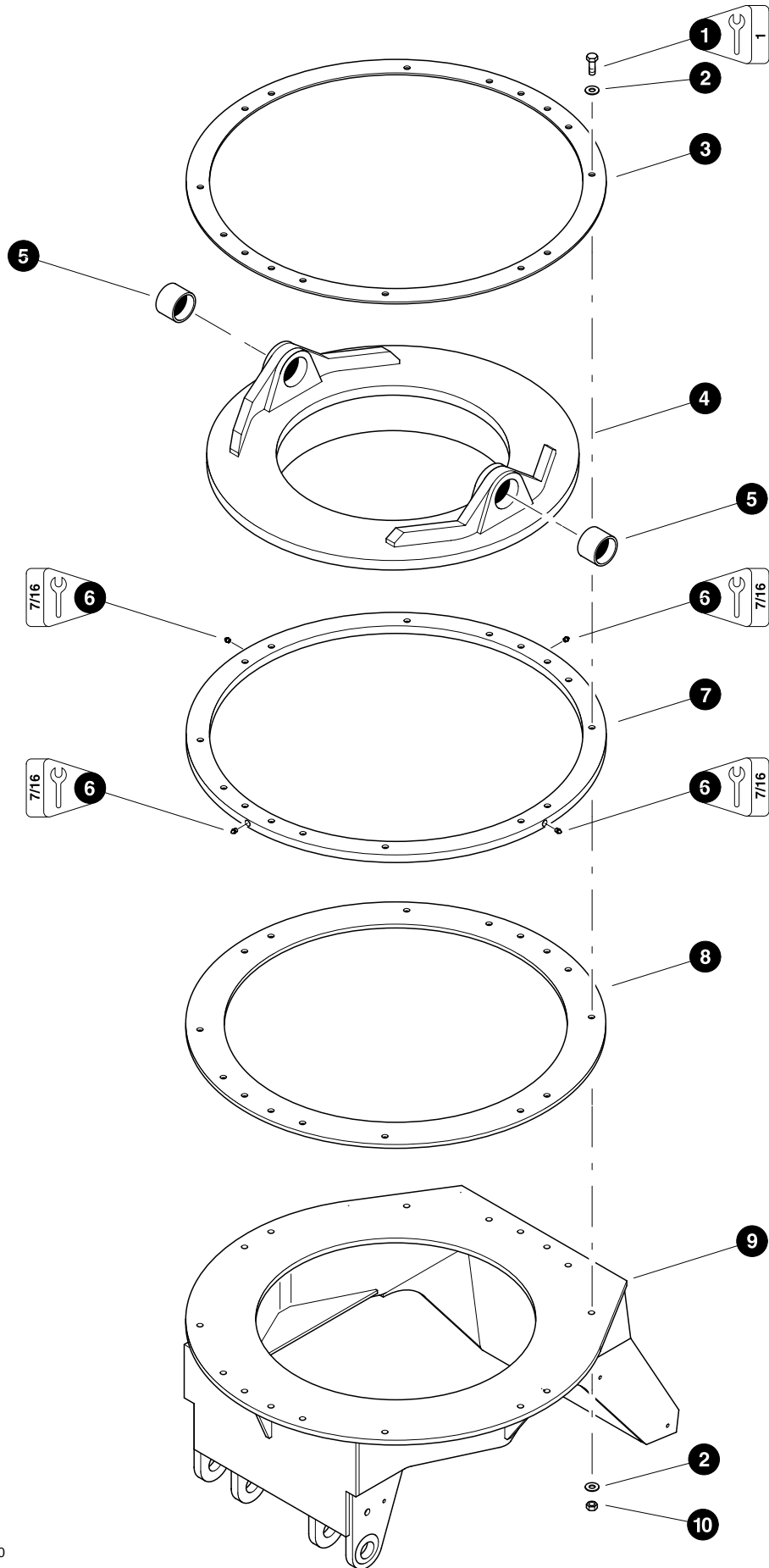
Parts 00384 12/23/97
9.375

CLAM BUNK LOWER BASE COMPONENTS

(Used on machines PDN# 139FWD and below)

REF	PART #	QTY	DESCRIPTION	SEE PAGE
1	10773-CB	16	BOLT - 5/8" x 3-1/2"	
2	10771-CB	32	WASHER, SAE flat - 5/8"	
3	13368-CB	1	RING, clam pivot hold-down	
4	13370-CB	1	<input type="checkbox"/> WELDMENT, clam pivot	
5	12397-CB	2	BUSHING - 3" x 2-1/2"	
6	10704-CB	4	FITTING, grease	
7	13367-CB	1	RING, clam pivot spacer	
8	13366-CB	1	RING, clam pivot wear	
9	13350-CB	1	WELDMENT, clam mounting base	
10	10816-CB	16	NUT, lock - 5/8"	

Kit or Assembly - includes all items indented underneath.



Parts 01909 11/22/2000
9.375

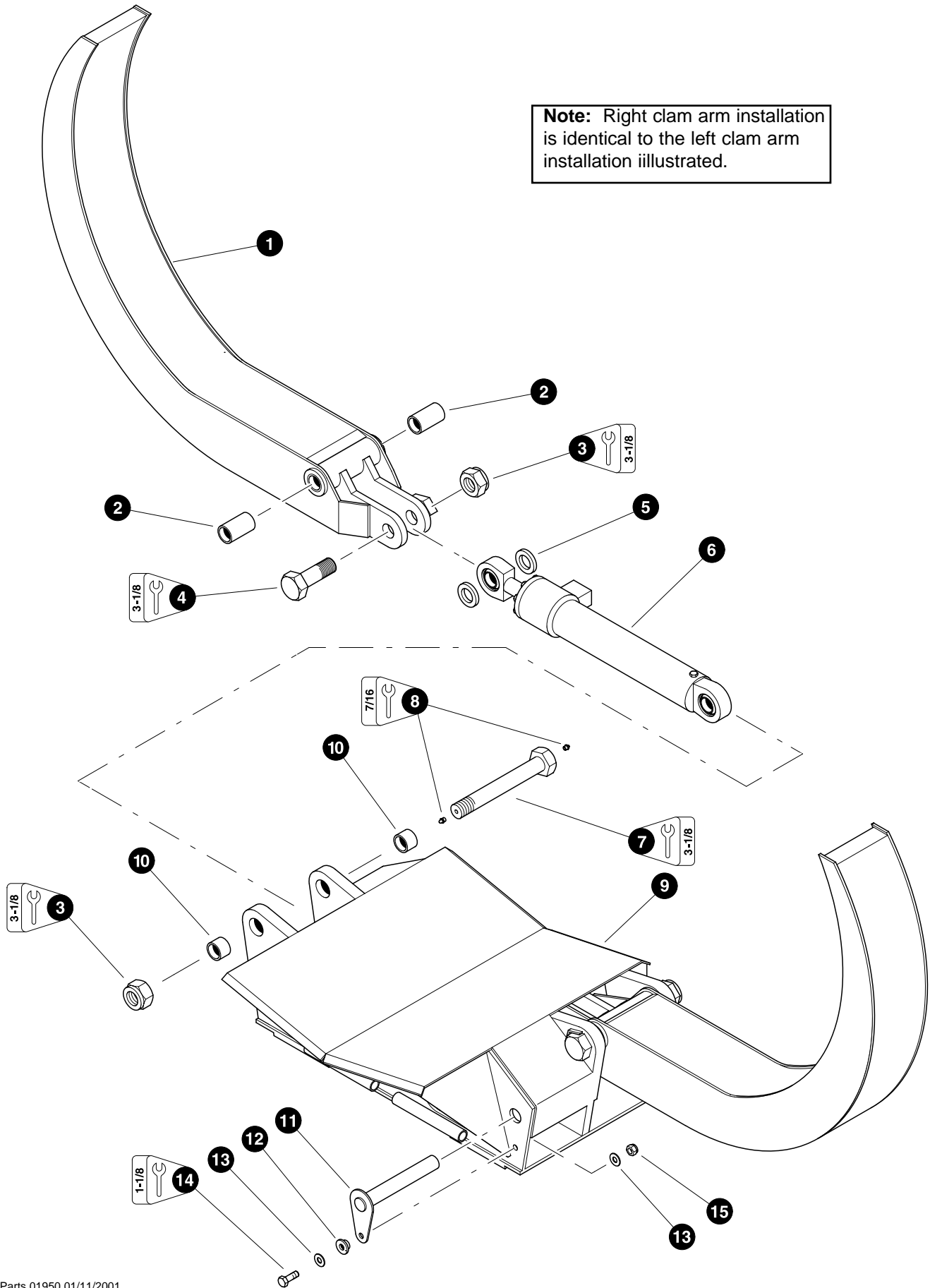
CLAM BUNK LOWER BASE COMPONENTS

(Used on machines PDN# 140FWD and above)

REF	PART #	QTY	DESCRIPTION	SEE PAGE
1	10773-CB	16	BOLT - 5/8" x 3-1/2"	
2	10771-CB	32	WASHER, SAE flat - 5/8"	
3	13380-CB	1	RING, clam pivot hold-down	
4	13465-CB	1	<input type="checkbox"/> WELDMENT, clam pivot	
5	12397-CB	2	BUSHING - 3" x 2-1/2"	
6	10704-CB	4	FITTING, grease	
7	13463-CB	1	RING, clam pivot spacer	
8	13366-CB	1	RING, clam pivot wear	
9	13480-CB	1	WELDMENT, clam mounting base	
10	10816-CB	16	NUT, lock - 5/8"	

- Kit or Assembly - includes all items indented underneath.

Note: Right clam arm installation is identical to the left clam arm installation illustrated.

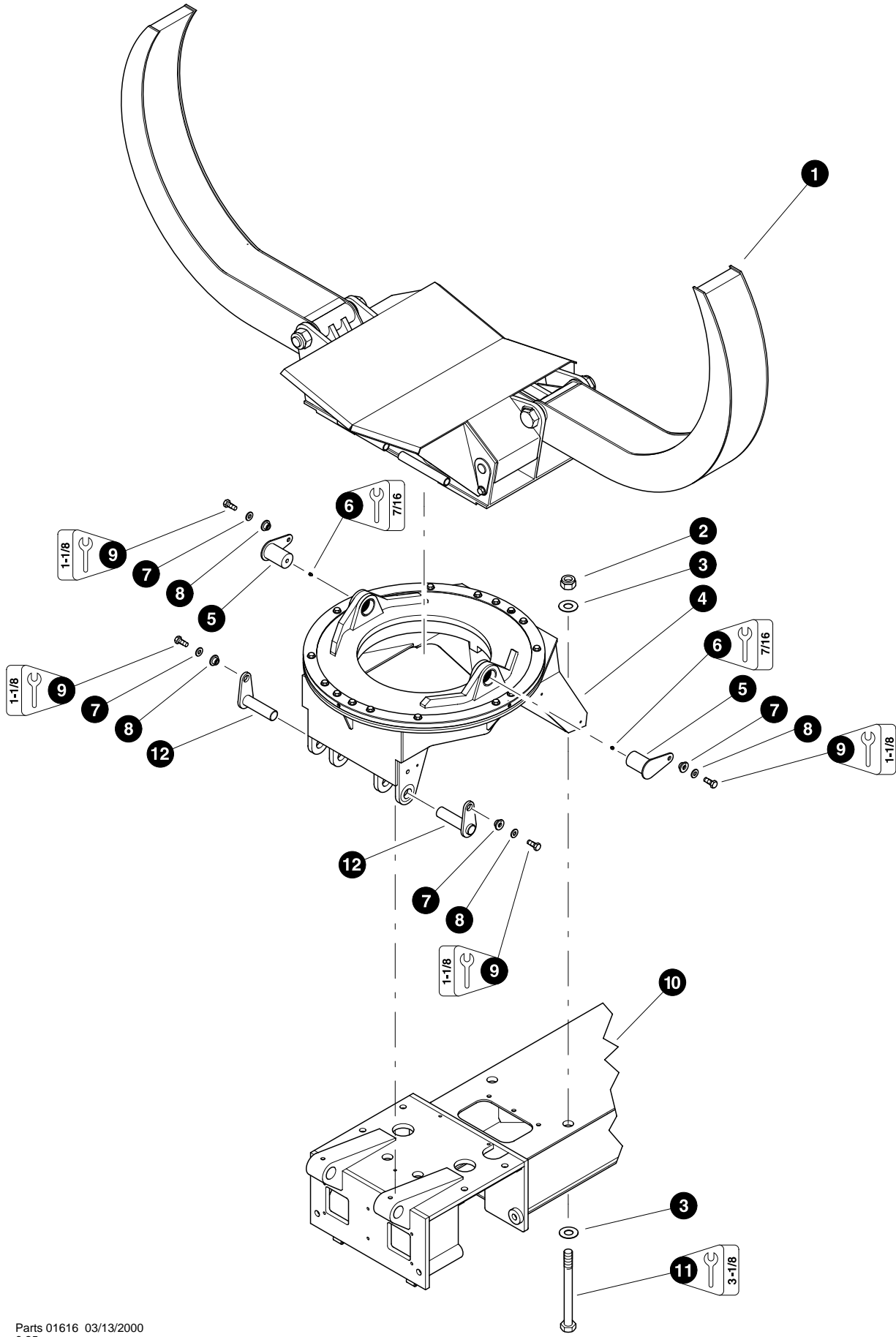


Parts 01950 01/11/2001
9.375

CLAM BUNK ARM INSTALLATION

REF	PART #	QTY		DESCRIPTION	SEE PAGE
1	13440-CB	2	<input type="checkbox"/>	WELDMENT, clam bunk arm	
2	12149-CB	2		BUSHING - 2" x 4-1/4"	
3	10728-CB	4		NUT, nylock - 2"	
4	20251-CB	2		PIN, clam cylinder rod - 2" x 7"	
5	20758-CB	4		SPACER	
6	REF.	2	<input checked="" type="checkbox"/>	CLAM BUNK CYLINDER	CB-2-2
7	23355-CB	2	<input type="checkbox"/>	PIN, clam arm - 2" x 17-1/2"	
8	10704-CB	4		FITTING, grease	
9	13330-CB	1	<input type="checkbox"/>	WELDMENT, clam arm base	
10	24051-CB	4		BUSHING - 2" x 1-3/4"	
11	19542-CB	2		PIN, clam cylinder base	
12	18570-CB	2		WASHER, pin retaining	
13	15550-CB	2		WASHER, SAE flat - 3/4"	
14	10775-CB	2		BOLT - 3/4" x 2-1/2"	
15	10817-CB	2		NUT, lock - 3/4"	

- Kit or Assembly - includes all items indented underneath.
- See referenced page for component breakdown.



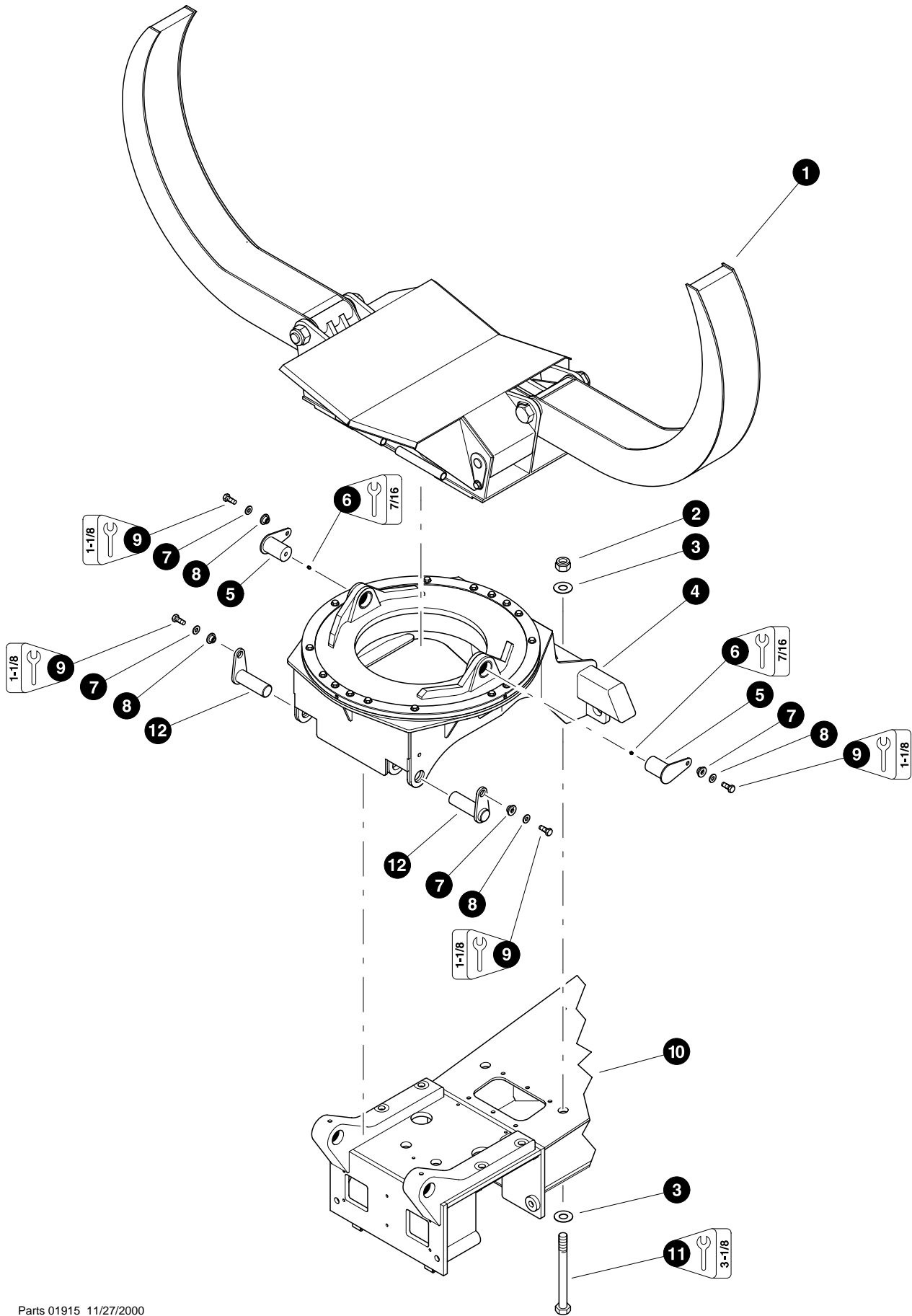
Parts 01616 03/13/2000
6.25

CLAM BUNK UNIT INSTALLATION

(Used on machines PDN# 139FWD and below)

REF	PART #	QTY		DESCRIPTION	SEE PAGE
1	REF.	1	✓	CLAM BUNK UPPER COMPONENTS	CB-1-4
2	19614-CB	2		NUT, lock - 1-1/2"	
3	19613-CB	4		WASHER, flat - 1-1/2"	
4	REF.	1	✓	CLAM BUNK LOWER BASE COMPONENTS	CB-1-2
5	19544-CB	2	☐	PIN, clam bunk pivot	
6	10704-CB	1		FITTING, grease	
7	18570-CB	4		WASHER, pin retaining	
8	15550-CB	4		WASHER, SAE flat - 3/4"	
9	10549-CB	4		BOLT - 3/4" x 2"	
10	REF.	1	✓	REAR FRAME WELDMENT	
11	20415-CB	2		BOLT - 1-1/2" x 19"	
12	19210-CB	2		PIN, floating bunk - 2" x 6-3/4"	

- ✓ See referenced page for component breakdown.
- ☐ Kit or Assembly - includes all items indented underneath.



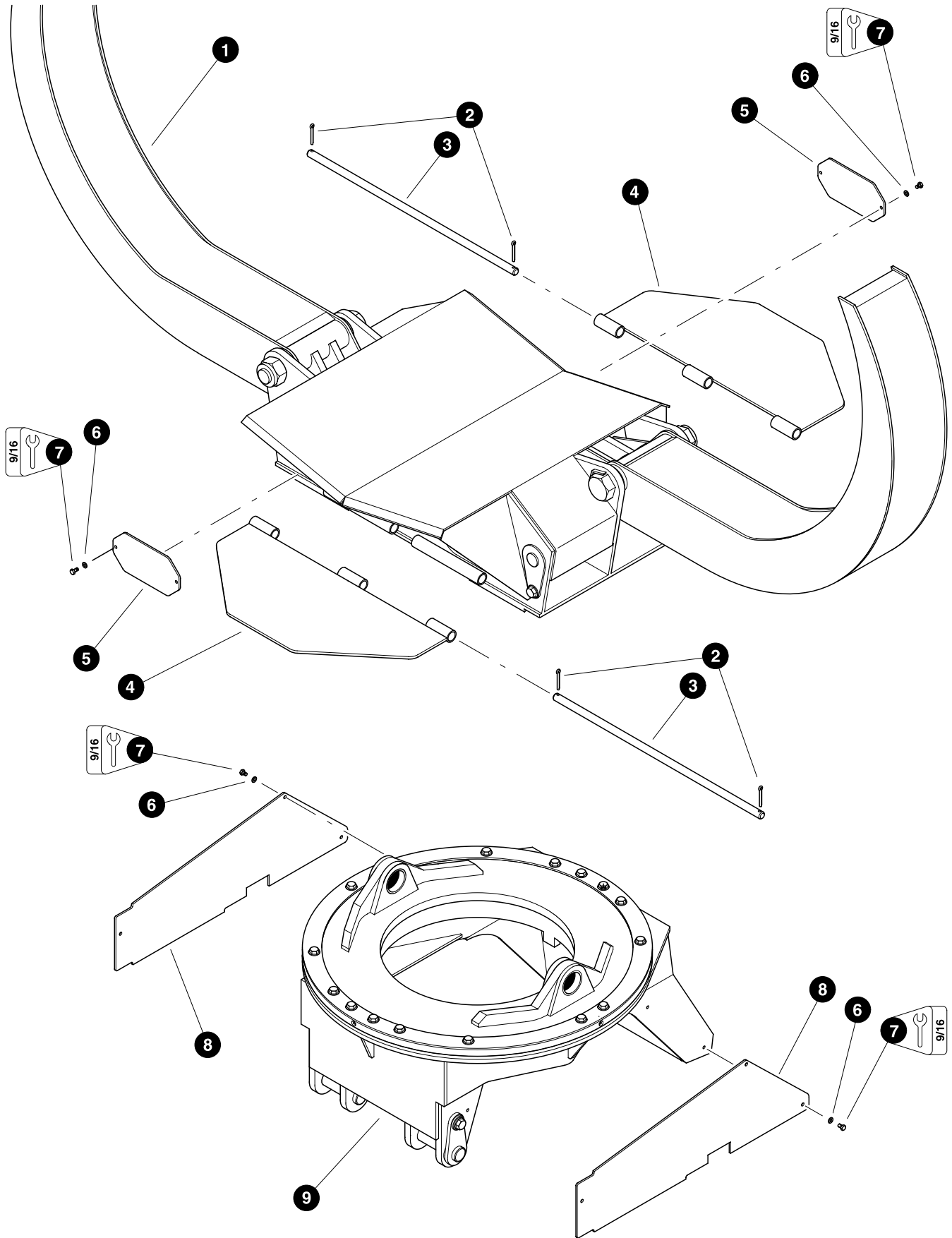
Parts 01915 11/27/2000
6.25

CLAM BUNK UNIT INSTALLATION

(Used on machines PDN# 140FWD and above)

REF	PART #	QTY		DESCRIPTION	SEE PAGE
1	REF.	1	✓	CLAM BUNK UPPER COMPONENTS	CB-1-4
2	19614-CB	2		NUT, lock - 1-1/2"	
3	19613-CB	4		WASHER, flat - 1-1/2"	
4	REF.	1	✓	CLAM BUNK LOWER BASE COMPONENTS	CB-1-2
5	19544-CB	2	☐	PIN, clam bunk pivot	
6	10704-CB	1		FITTING, grease	
7	18570-CB	4		WASHER, pin retaining	
8	15550-CB	4		WASHER, SAE flat - 3/4"	
9	10549-CB	4		BOLT - 3/4" x 2"	
10	REF.	1	✓	REAR FRAME WELDMENT	
11	20415-CB	2		BOLT - 1-1/2" x 19"	
12	23434-CB	2		PIN, floating bunk - 2-1/2" x 7-7/8"	

- ✓ See referenced page for component breakdown.
- ☐ Kit or Assembly - includes all items indented underneath.



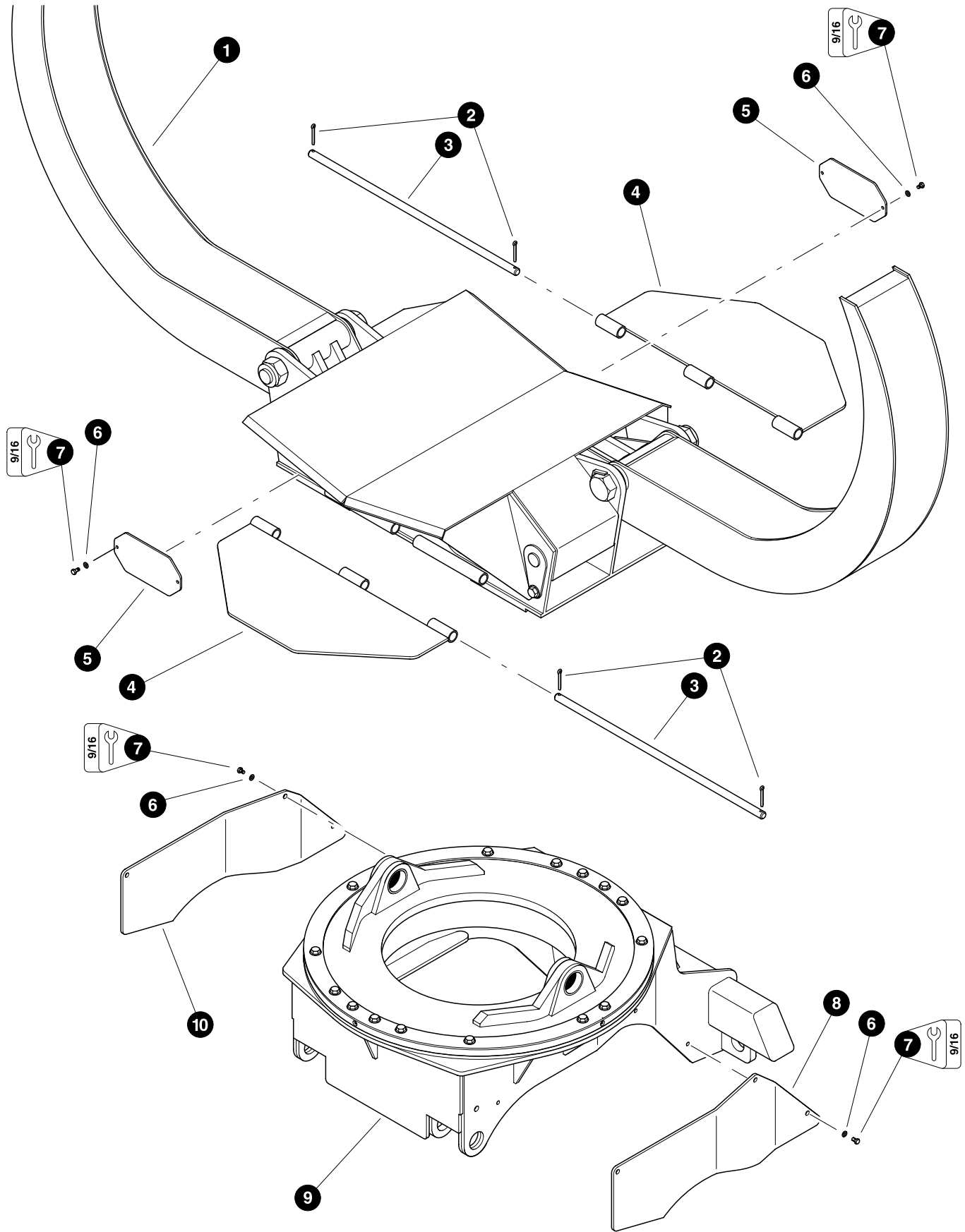
Parts 00387 12/23/97
9.375

CLAM BUNK ACCESS COVERS & GUARDS

(Used on machines PDN# 139FWD and below)

REF	PART #	QTY		DESCRIPTION	SEE PAGE
1	REF.	1	✓	CLAM BUNK UPPER COMPONENTS	CB-1-4
2	20249-CB	4		PIN, cotter - 1/4" x 2"	
3	13390-CB	2		SHAFT, hinge cover	
4	13385-CB	2		COVER, hinge	
5	13415-CB	4		COVER, access - arm mounting base	
6	15528-CB	14		WASHER, SAE flat - 3/8"	
7	11707-CB	14		BOLT - 3/8" x 1"	
8	13414-CB	2		COVER, access - clam mounting base	
9	REF.	1	✓	CLAM BUNK LOWER BASE COMPONENTS	CB-1-2

✓ See referenced page for component breakdown.



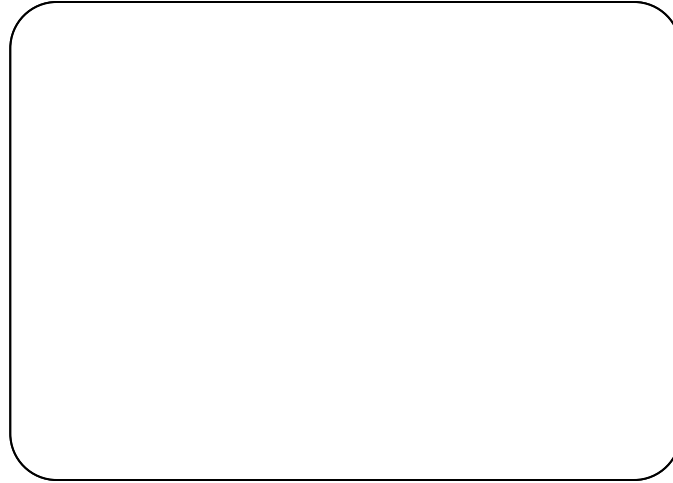
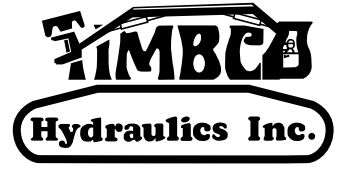
Parts 01916 11/27/2000
9.375

CLAM BUNK ACCESS COVERS & GUARDS*(Used on machines PDN# 140FWD and above)*

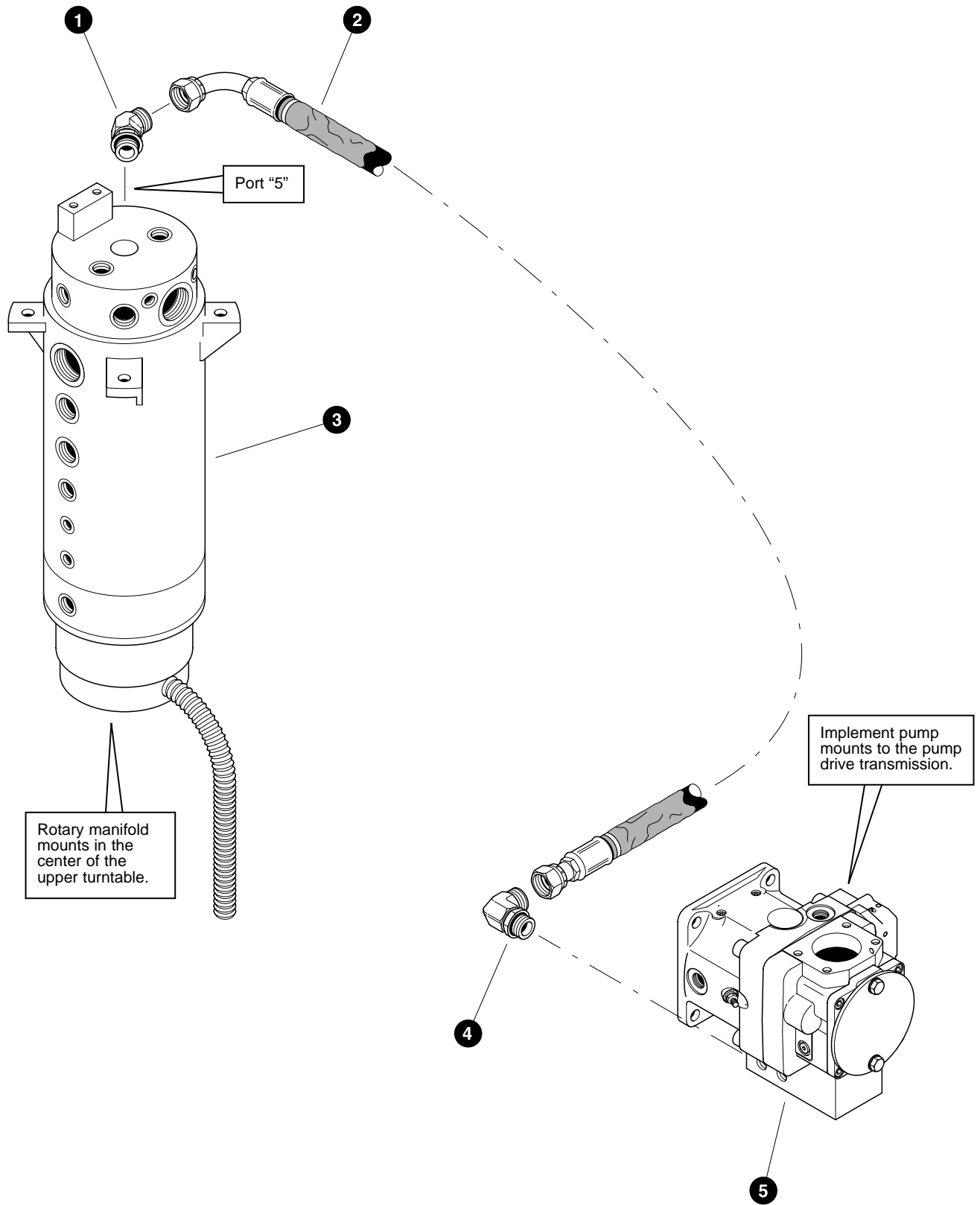
REF	PART #	QTY		DESCRIPTION	SEE PAGE
1	REF.	1	✓	CLAM BUNK UPPER COMPONENTS	CB-1-4
2	20249-CB	4		PIN, cotter - 1/4" x 2"	
3	13390-CB	2		SHAFT, hinge cover	
4	13385-CB	2		COVER, hinge	
5	13415-CB	4		COVER, access - arm mounting base	
6	15528-CB	14		WASHER, SAE flat - 3/8"	
7	11707-CB	14		BOLT - 3/8" x 1"	
8	23488-CB	1		COVER, access - clam mounting base - RH	
9	REF.	1	✓	CLAM BUNK LOWER BASE COMPONENTS	CB-1-2
10	23489-CB	1		COVER, access - clam mounting base - LH	

✓ See referenced page for component breakdown.

Section CB-2



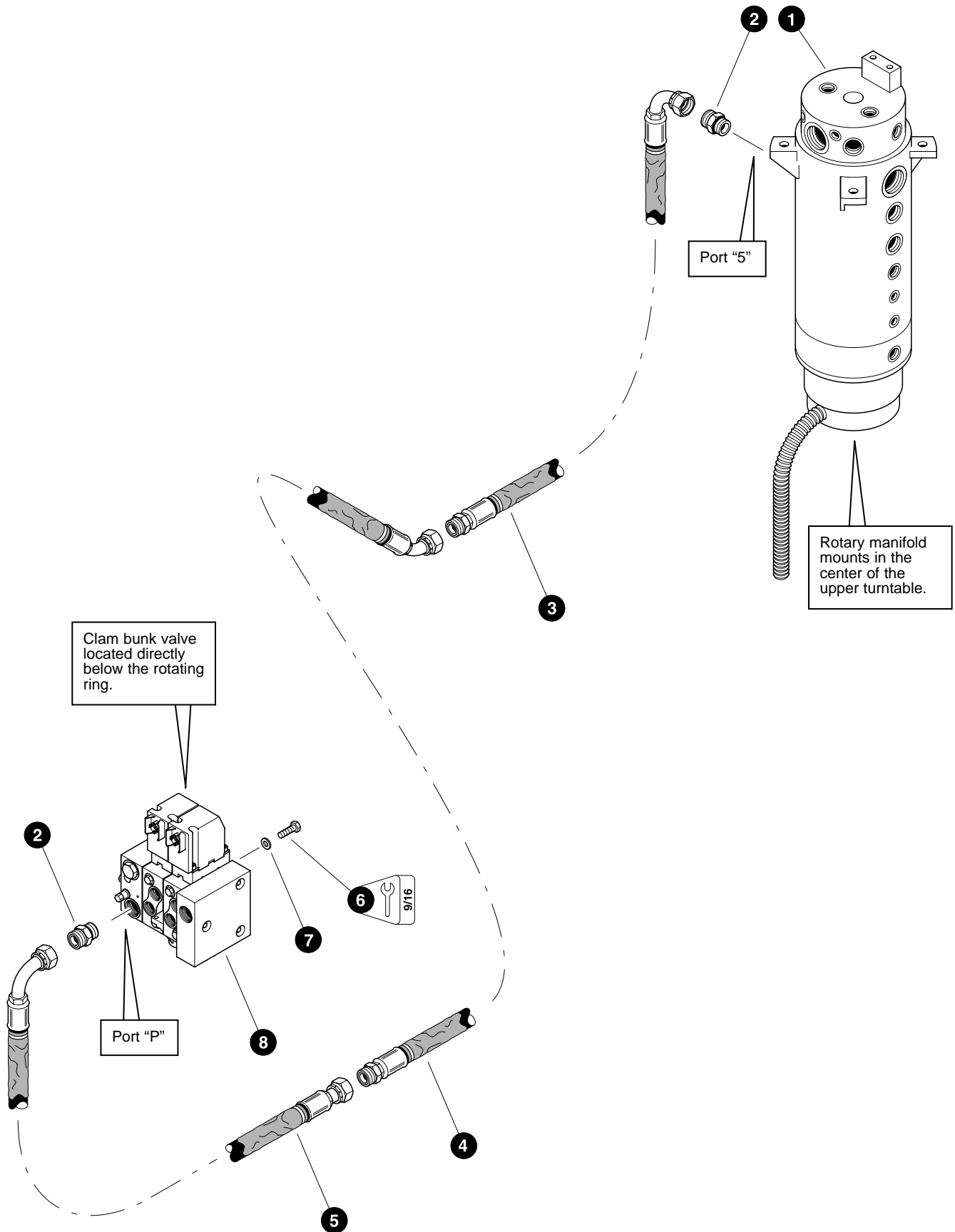
Clam Bunk - Hydraulic Circuits



CLAM BUNK PRESSURE LINE
(Implement Pump To Upper Rotary Manifold)

REF	PART #	QTY	DESCRIPTION	SEE PAGE
1	19127-CB	1	ELBOW, 45° - FF2068T-1212S	
2	23014-CB	1	HOSE ASSEMBLY - 4069-12-120S-1209-W (<i>Implement pump pressure manifold to rotary manifold upper port "5"</i>)	
3	REF.	1	✓ ROTARY MANIFOLD	UP-1-6
4	17688-CB	1	ELBOW, 90° - FF1868T-1212S	
5	REF.	1	✓ IMPLEMENT PUMP	LH-1-2

✓ See referenced page for component or assembly breakdown.

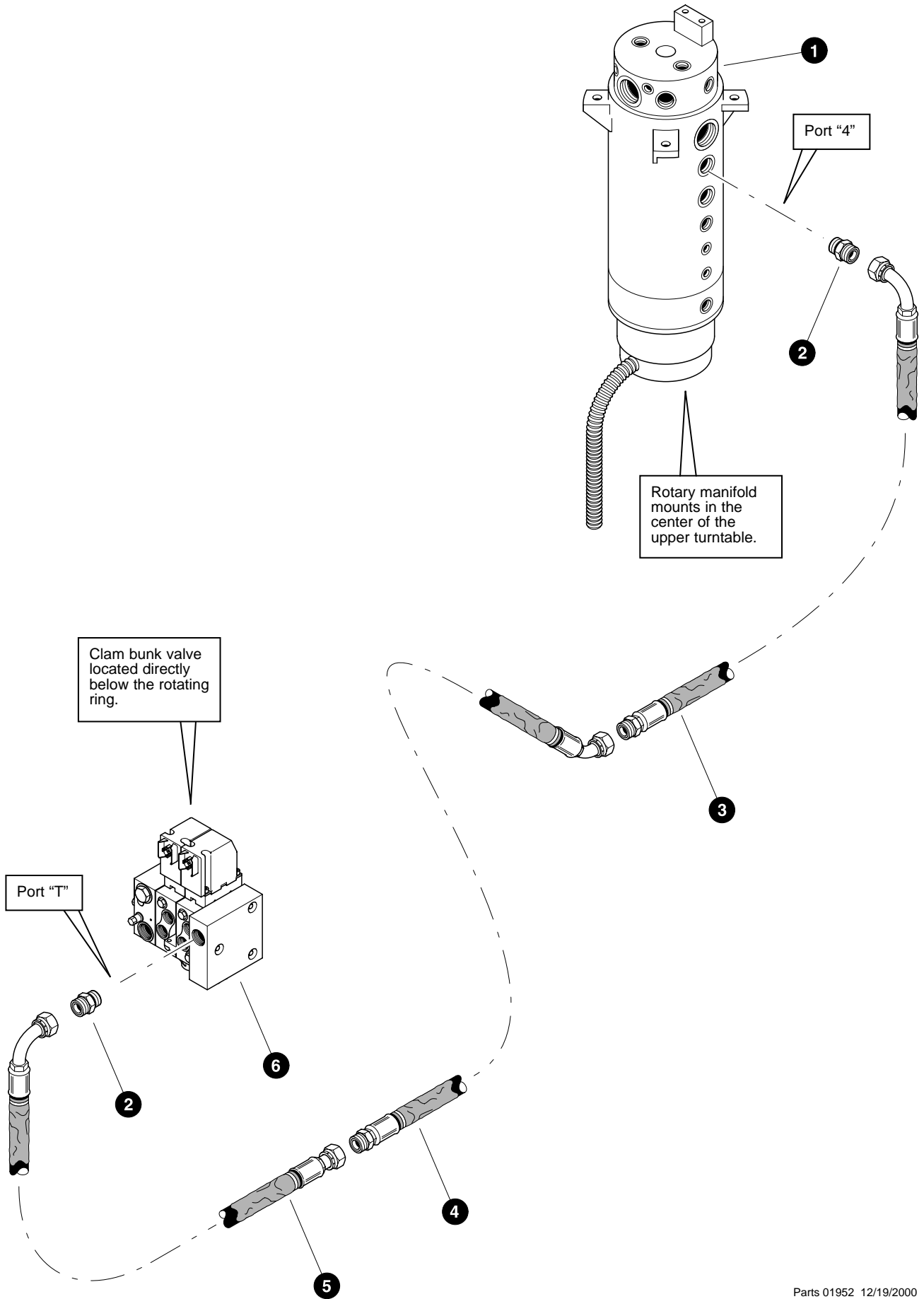


Parts 01951 12/19/2000
18.75

CLAM BUNK PRESSURE LINE
(Lower Rotary Manifold To Clam Bunk Valve)

REF	PART #	QTY		DESCRIPTION	SEE PAGE
1	REF.	1	✓	ROTARY MANIFOLD	UP-1-6
2	15152-CB	2		CONNECTOR, straight - FF1852T-1212S	
3	22692-CB	1		HOSE ASSEMBLY - 4092.5-12-120MS-1209-W (<i>Rotary manifold lower port "5" to middle run hose</i>)	
4	22983-CB	1		HOSE ASSEMBLY - 4082-12-120MS-1204-W (<i>Middle run hose (Used with Flattop rear frames)</i>)	
	22816-CB	1		HOSE ASSEMBLY - 4097-12-120S-120MS-W (<i>Middle run hose (Used with Sloped rear frames)</i>)	
5	22419-CB	1		HOSE ASSEMBLY - 4062.5-12-120S-1209-W (<i>Middle run hose to clam bunk valve port "P"</i>)	
6	10402-CB	2		BOLT - 3/8" x 1-1/4"	
7	15528-CB	2		WASHER, SAE flat - 3/8"	
8	REF.	1	✓	CLAM BUNK CONTROL VALVE	CB-3-2

✓ See referenced page for component or assembly breakdown.

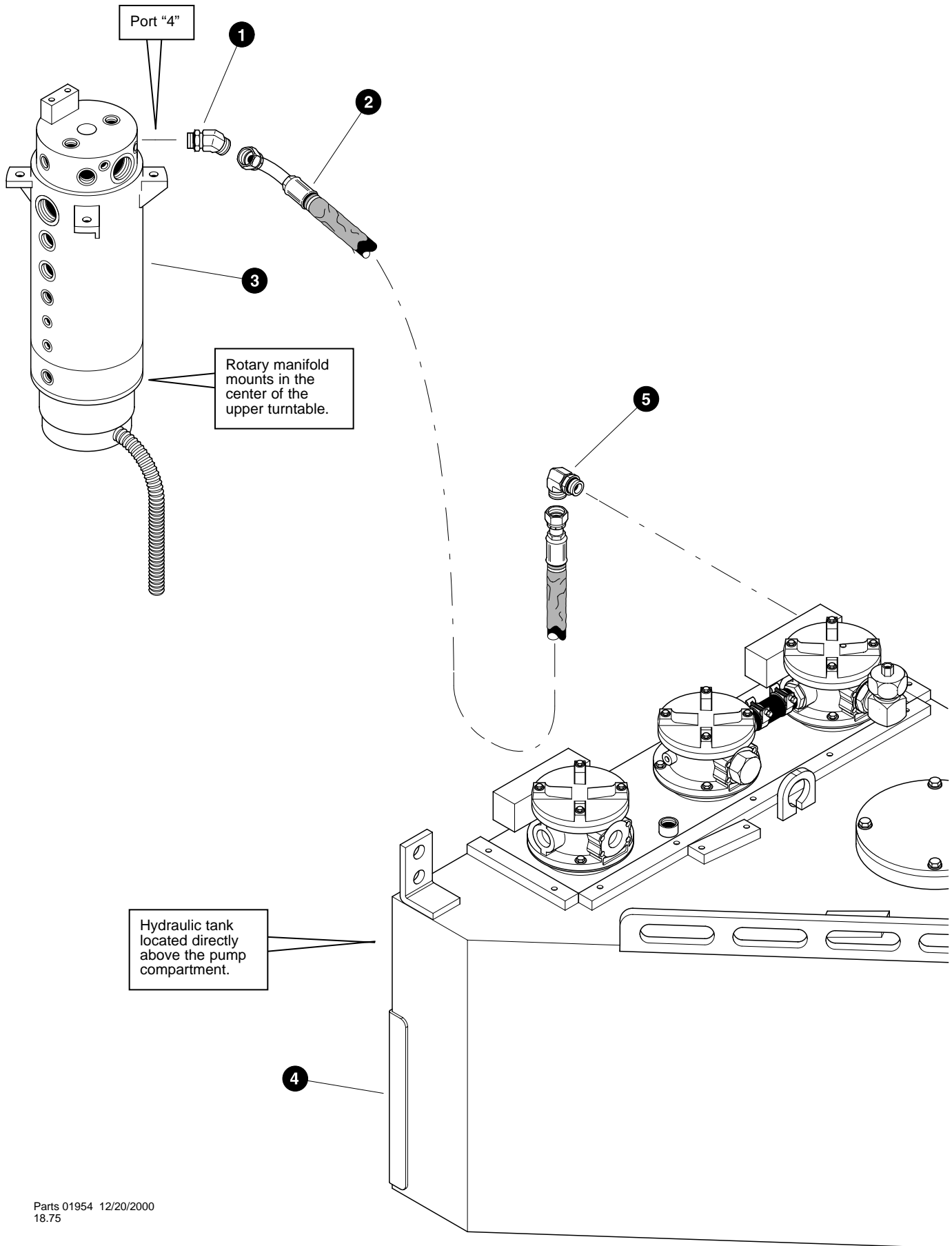


Parts 01952 12/19/2000
18.75

CLAM BUNK RETURN LINE
(Clam Bunk Valve To Lower Rotary Manifold)

REF	PART #	QTY		DESCRIPTION	SEE PAGE
1	REF.	1	✓	ROTARY MANIFOLD	UP-1-6
2	15152-CB	2		CONNECTOR, straight - FF1852T-1212S	
3	22691-CB	1		HOSE ASSEMBLY - 4093.5-12-120MS-1209-W (<i>Rotary manifold lower port "4" to middle run hose</i>)	
4	22983-CB	1		HOSE ASSEMBLY - 4082-12-120MS-1204-W (<i>Middle run hose (Used with Flattop rear frames)</i>)	
	22816-CB	1		HOSE ASSEMBLY - 4097-12-120S-120MS-W (<i>Middle run hose (Used with Sloped rear frames)</i>)	
5	22823-CB	1		HOSE ASSEMBLY - 4059-12-120S-1209-W (<i>Middle run hose to clam bunk valve port "T"</i>)	
6	REF.	1	✓	CLAM BUNK CONTROL VALVE	CB-3-2

✓ See referenced page for component or assembly breakdown.

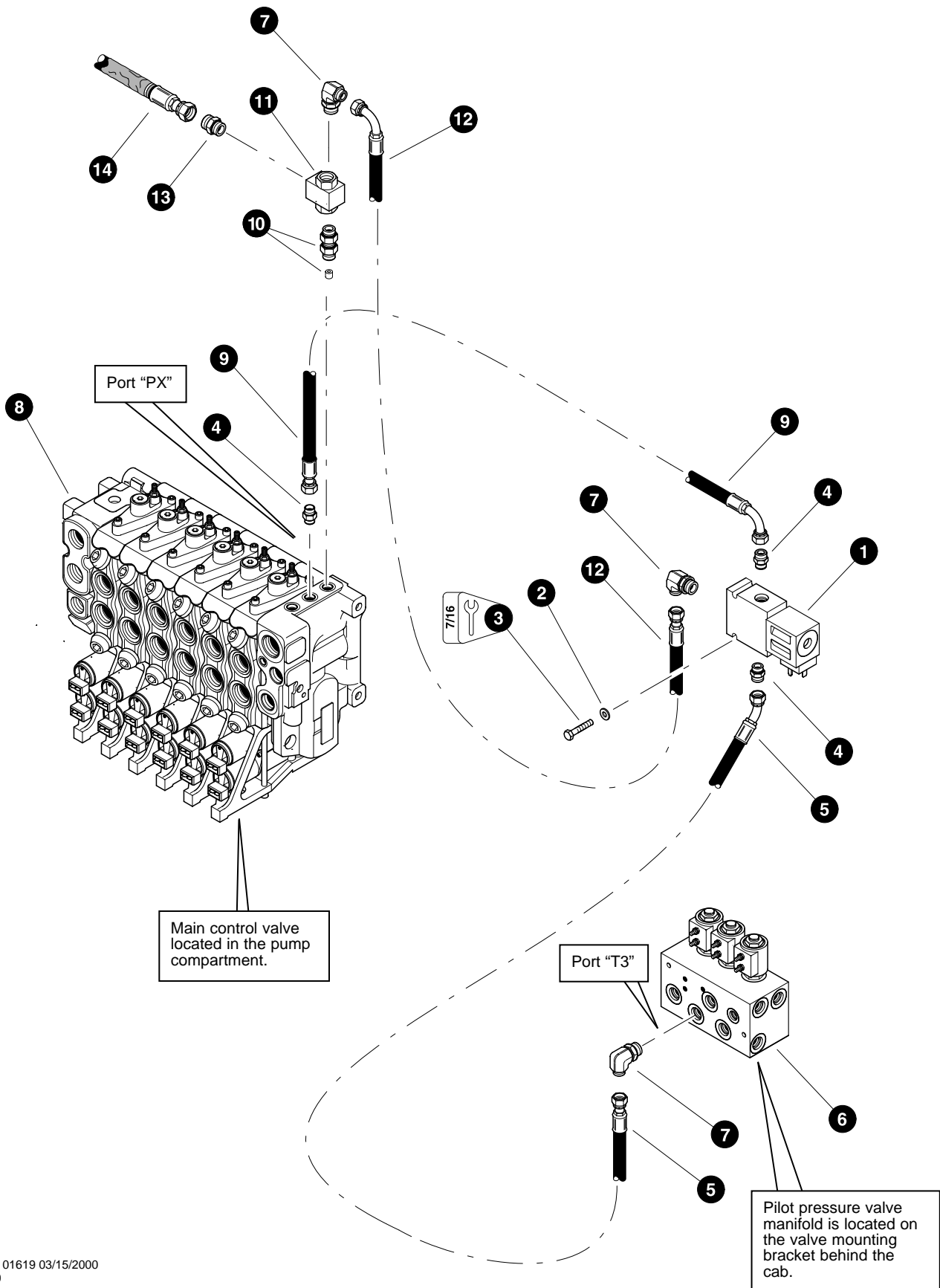


Parts 01954 12/20/2000
18.75

CLAM BUNK RETURN LINE (Upper Rotary Manifold To Tank)

REF	PART #	QTY	DESCRIPTION	SEE PAGE
1	19127-CB	1	ELBOW, 45° - FF2068T-1212S	
2	20396-CB	1	HOSE ASSEMBLY - 4072-12-120S-1209-W (<i>Rotary manifold upper port "4" to cab-side return filter</i>)	
3	REF.	1	✓ ROTARY MANIFOLD	UP-1-6
4	REF.	1	✓ HYDRAULIC TANK	UP-4-2
5	19128-CB	1	ELBOW, 90° - FF1868T-1216S	

✓ See referenced page for component or assembly breakdown.



Parts 01619 03/15/2000
25.00

CLAM BUNK LOAD SENSE LINES (LS90 Main Control Valve)

(Used on machines PDN# 134FWD and below)

REF	PART #	QTY	DESCRIPTION	SEE PAGE
1	19300-CB	1	VALVE, 3-way	
2	10757-CB	2	WASHER, SAE flat - 1/4"	
3	15575-CB	2	BOLT - 1/4" x 1-1/2"	
4	15124-CB	3	CONNECTOR, straight - FF1852T-0406S	
5	22984-CB	1	HOSE ASSEMBLY - 2023-04-040S-0404 (3-way valve to pilot pressure manifold port "T3")	
6	REF.	1	✓ PILOT PRESSURE MANIFOLD	UP-5-2
7	15133-CB	3	ELBOW, 90° - FF1868T-0406S	
8	REF.	1	✓ MAIN CONTROL VALVE	LH-2-2
9	22653-CB	1	HOSE ASSEMBLY - 2015-04-040S-0409 (Main control valve port "PX" to 3-way valve)	
10	24092-CB	1	CONNECTOR, straight - 6403-NWO-6 (With 0.024" orifice)	
	24091-CB	1	ORIFICE - 0.024"	
11	19303-CB	1	VALVE, shuttle - load sense	
12	15175-CB	1	HOSE ASSEMBLY - 2018-04-040S-0409 (3-way valve to load sense shuttle)	
13	18034-CB	1	CONNECTOR, straight - FF1852T-0606S	
14	23009-CB	1	HOSE ASSEMBLY - 4089-06-060S-060S-W (Load sense signal line to implement pump)	

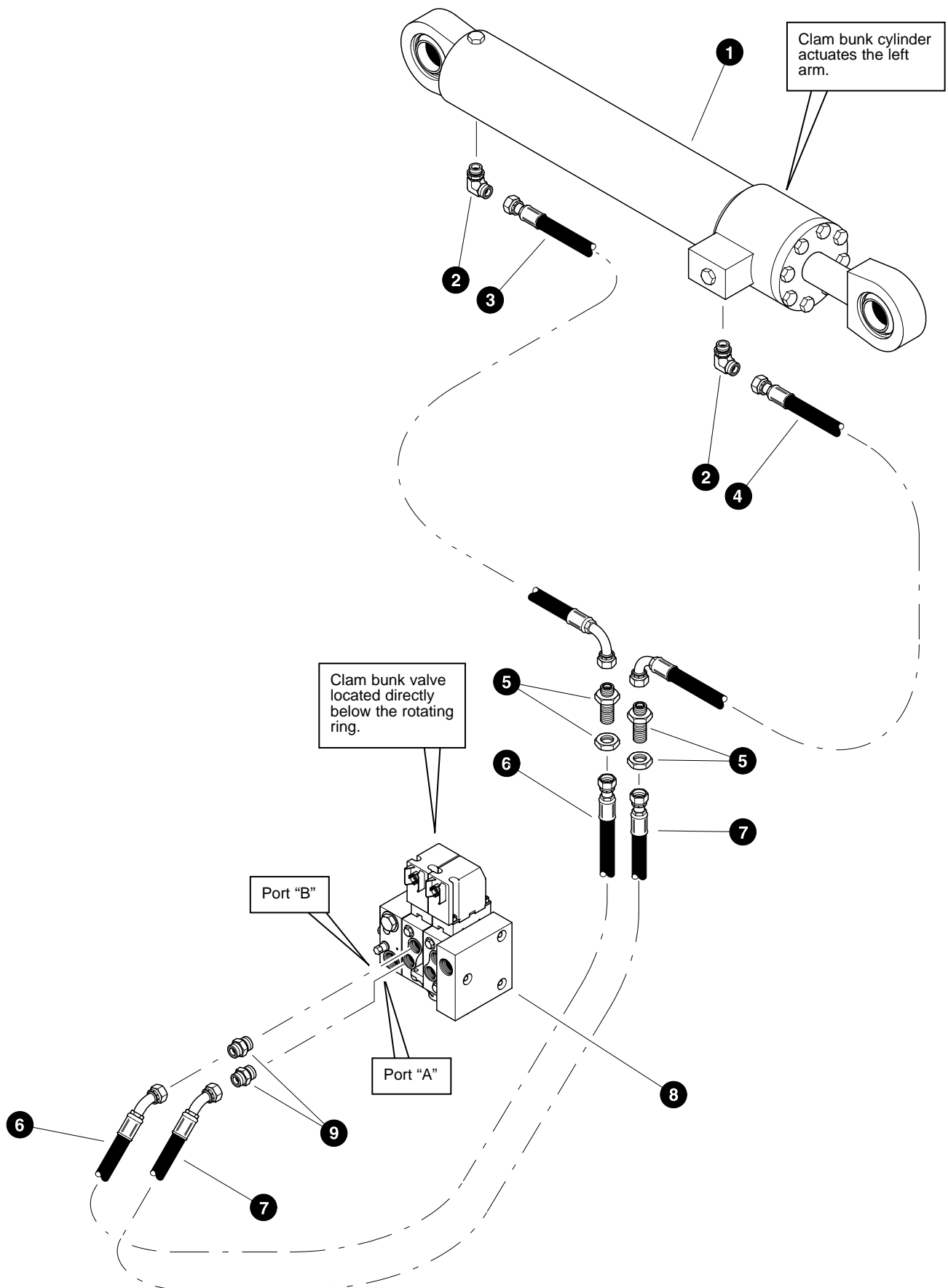
✓ See referenced page for component or assembly breakdown.

CLAM BUNK LOAD SENSE LINES (LS90 Main Control Valve)

(Used on machines PDN# 135FWD and above)

REF	PART #	QTY	DESCRIPTION	SEE PAGE
1	19300-CB	1	VALVE, 3-way	
2	10757-CB	2	WASHER, SAE flat - 1/4"	
3	15575-CB	2	BOLT - 1/4" x 1-1/2"	
4	15124-CB	3	CONNECTOR, straight - FF1852T-0406S	
5	22984-CB	1	HOSE ASSEMBLY - 2023-04-040S-0404 <i>(3-way valve to combined tank manifold)</i>	
6	15176-CB	1	TEE - FF2114T-0404S	
7	15133-CB	3	ELBOW, 90° - FF1868T-0406S	
8	REF.	1	✓ MAIN CONTROL VALVE	LH-2-2
9	22653-CB	1	HOSE ASSEMBLY - 2015-04-040S-0409 <i>(Main control valve port "PX" to 3-way valve)</i>	
10	24092-CB	1	CONNECTOR, straight - 6403-NWO-6 <i>(With 0.024" orifice)</i>	
	24091-CB	1	ORIFICE - 0.024"	
11	19303-CB	1	VALVE, shuttle - load sense	
12	15175-CB	1	HOSE ASSEMBLY - 2018-04-040S-0409 <i>(3-way valve to load sense shuttle)</i>	
13	18034-CB	1	CONNECTOR, straight - FF1852T-0606S	
14	23009-CB	1	HOSE ASSEMBLY - 4089-06-060S-060S-W <i>(Load sense signal line to implement pump)</i>	
15	23502-CB	1	MANIFOLD, combined tank	

✓ See referenced page for component or assembly breakdown.

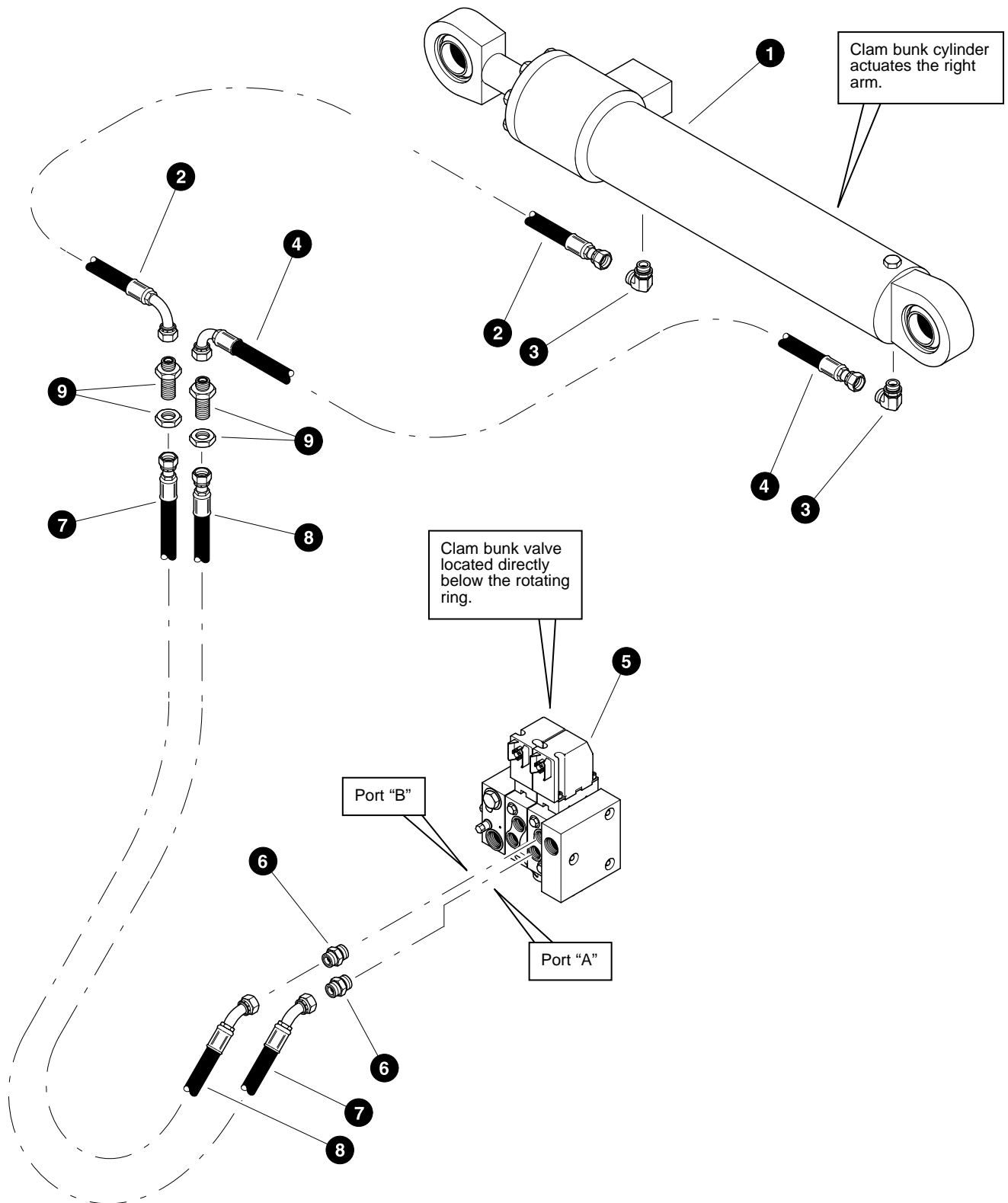


Parts 00363 12/18/97
18.75

CLAM BUNK ARM LINES
(Clam Bunk Valve To Left Clam Bunk Cylinder)

REF	PART #	QTY		DESCRIPTION	SEE PAGE
1	REF.	1	✓	CLAM BUNK CYLINDER	CB-2-16
2	16360-CB	2		ELBOW, 90° - FF1868T-0808S	
3	17483-CB	1		HOSE ASSEMBLY - 4019-08-080S-0809 (<i>Clam bunk cylinder base port to left front bulkhead fitting</i>)	
4	20195-CB	1		HOSE ASSEMBLY - 4031-08-080S-0809 (<i>Clam bunk cylinder rod port to right front bulkhead fitting</i>)	
5	20196-CB	2		CONNECTOR, straight bulkhead - FF1994T-0808S	
6	20113-CB	1		HOSE ASSEMBLY - 4047-08-080S-0804 (<i>Clam bunk left valve section port "B" to left front bulkhead fitting</i>)	
7	20198-CB	1		HOSE ASSEMBLY - 4045-08-080S-0804 (<i>Clam bunk left valve section port "A" to right front bulkhead fitting</i>)	
8	REF.	1	✓	CLAM BUNK CONTROL VALVE	CB-3-2
9	15115-CB	2		CONNECTOR, straight - FF1852T-0810S	

✓ See referenced page for component or assembly breakdown.

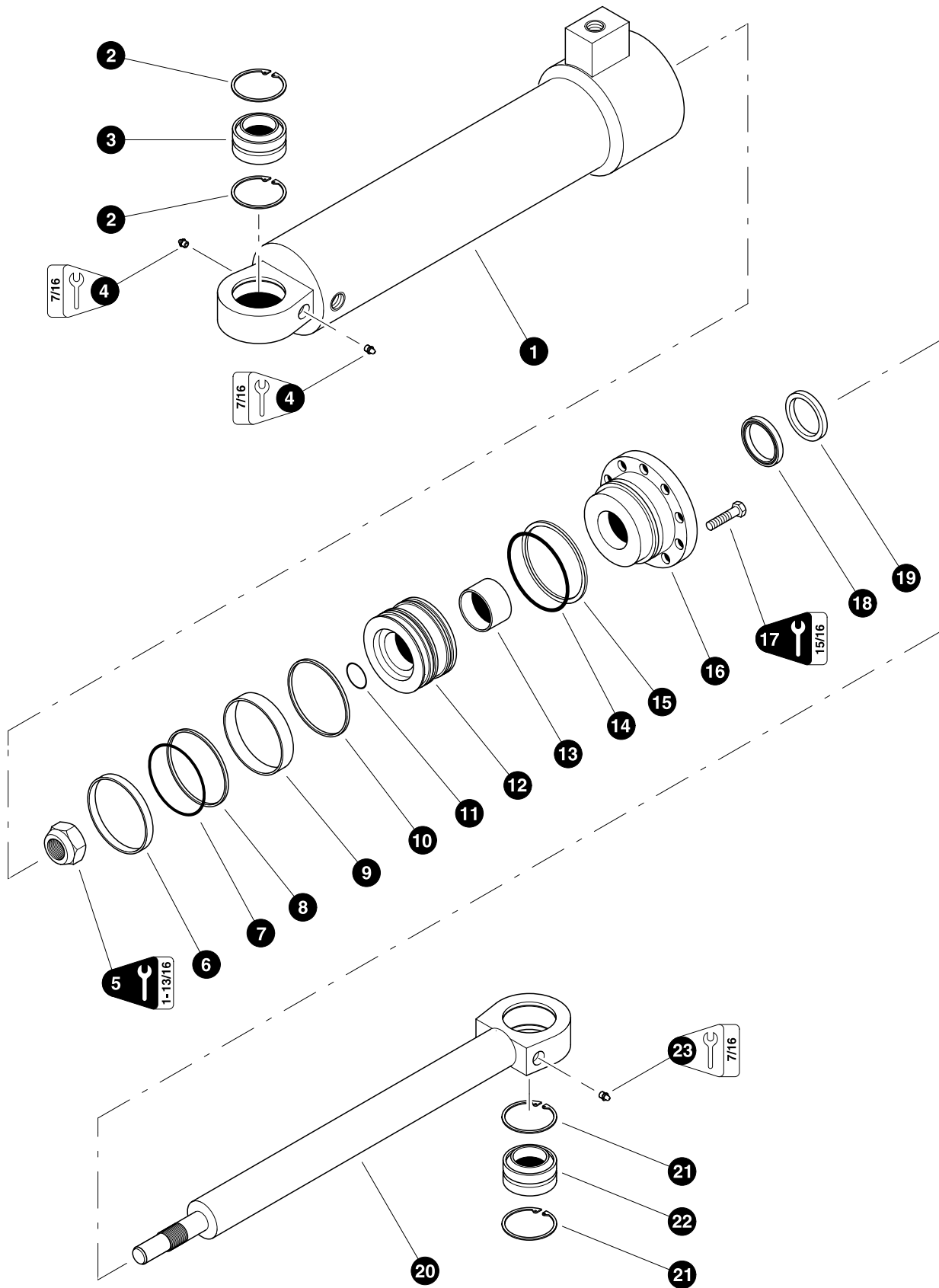


Parts 00364 12/18/97
18.75

CLAM BUNK ARM LINES
(Clam Bunk Valve To Right Clam Bunk Cylinder)

REF	PART #	QTY		DESCRIPTION	SEE PAGE
1	REF.	1	✓	CLAM BUNK CYLINDER	CB-2-16
2	16360-CB	2		ELBOW, 90° - FF1868T-0808S	
3	20195-CB	1		HOSE ASSEMBLY - 4031-08-080S-0809 (<i>Clam bunk cylinder rod port to left rear bulkhead fitting</i>)	
4	17483-CB	1		HOSE ASSEMBLY - 4019-08-080S-0809 (<i>Clam bunk cylinder base port to right rear bulkhead fitting</i>)	
5	REF.	1	✓	CLAM BUNK CONTROL VALVE	CB-3-2
6	15115-CB	2		CONNECTOR, straight - FF1852T-0810S	
7	20199-CB	1		HOSE ASSEMBLY - 4046-08-080S-0804 (<i>Clam bunk right valve section port "A" to left rear bulkhead fitting</i>)	
8	20201-CB	1		HOSE ASSEMBLY - 4048-08-080S-0804 (<i>Clam bunk right valve section port "B" to right rear bulkhead fitting</i>)	
9	20196-CB	2		CONNECTOR, straight bulkhead - FF1994T-0808S	

✓ See referenced page for component or assembly breakdown.



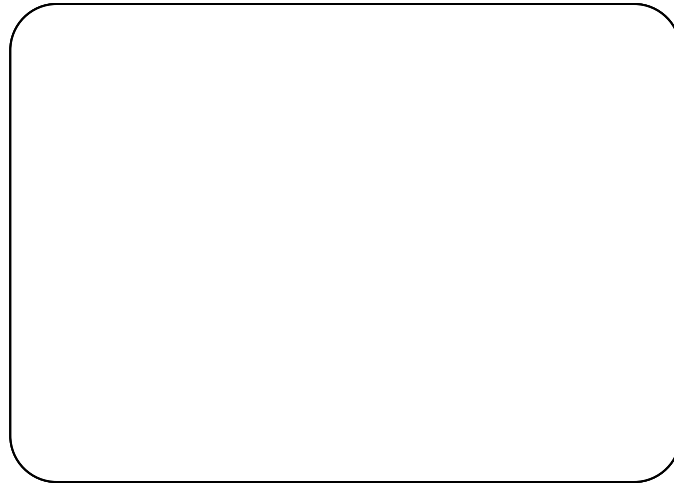
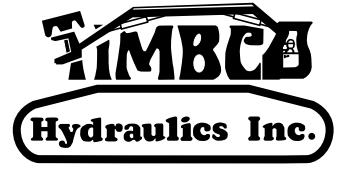
00268 09/08/97
18.75

CLAM ARM CYLINDER

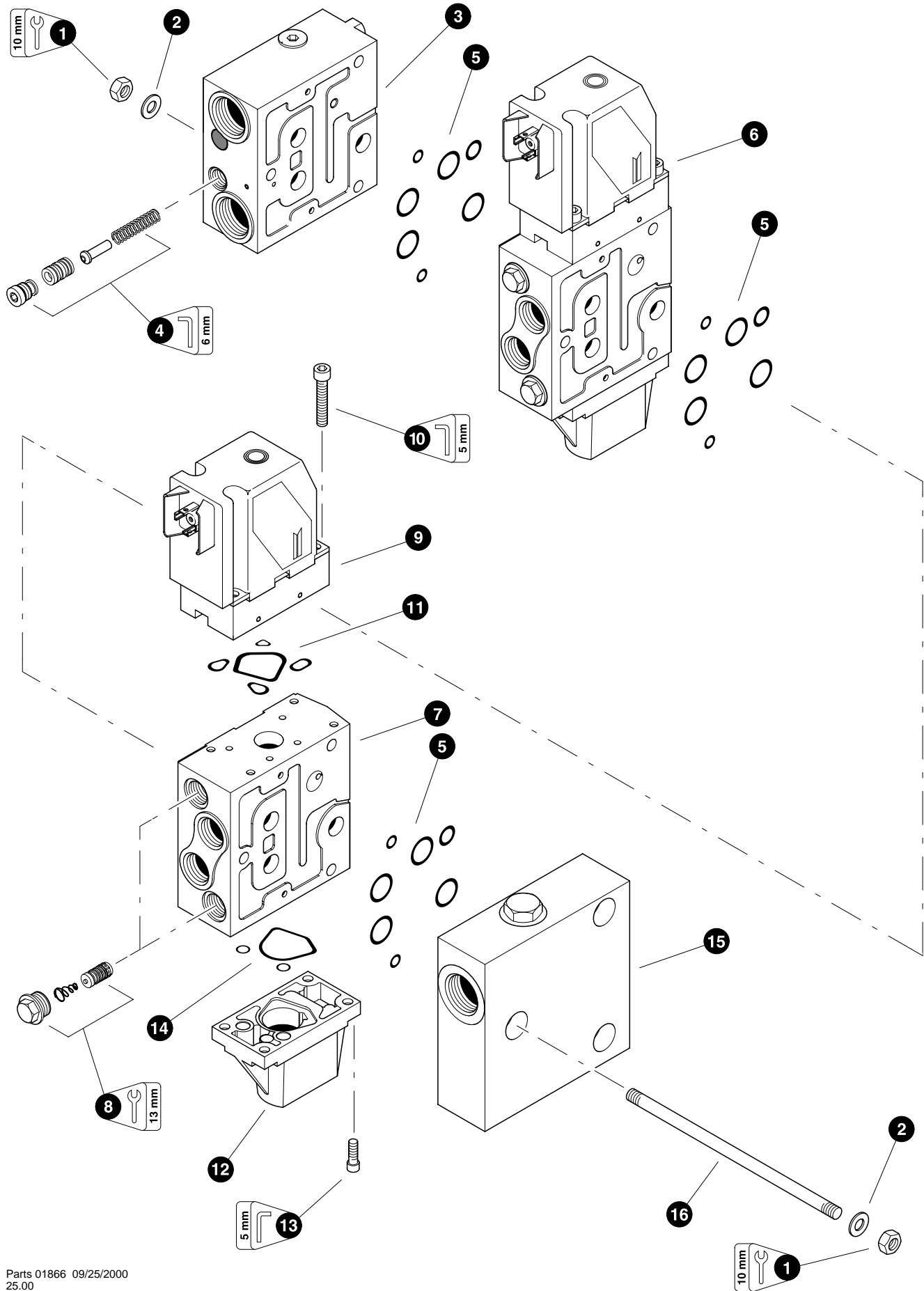
REF	PART #	QTY		DESCRIPTION	SEE PAGE
-	19738-CB	2	<input type="checkbox"/>	CLAM ARM CYLINDER ASSEMBLY	
1	19960-CB	1	<input type="checkbox"/>	BARREL ASSEMBLY	
2	19916-CB	2		RING, snap	
3	19917-CB	1		BUSHING, spherical - 2"	
4	10704-CB	1		FITTING, straight grease - 1/8" pipe thread	
5	15914-CB	1		NUT, cylinder rod - 1-3/4" (Torque to 885 +/- 60 ft.lbs. (1175 +/- 80 Nm))	
6	NSS	1	★	RING, piston wear	
7	NSS	1	★	RING, piston loader	
8	NSS	1	★	RING, piston chem-cast	
9	NSS	1	★	RING, piston wear	
10	NSS	1	★	RING, piston seal	
11	NSS	1	★	O-RING, piston	
12	19573-CB	1		PISTON	
13	NSS	1	★	RING, rod bearing wear	
14	NSS	1	★	O-RING, rod bearing	
15	NSS	1	★	RING, rod bearing back-up	
16	19962-CB	1		BEARING, rod	
17	15681-CB	8		BOLT - 5/8" x 2-1/4" (Torque to 175 ft.lbs (233 Nm))	
18	NSS	1	★	U-CUP, rod bearing	
19	NSS	1	★	WIPER, rod	
20	19963-CB	1	<input type="checkbox"/>	ROD ASSEMBLY	
21	19916-CB	2		RING, snap	
22	19917-CB	1		BUSHING, spherical - 2"	
23	10704-CB	1		FITTING, straight grease - 1/8" pipe thread	
-	19964-CB	1		KIT, seal repair - steer/clam arm cylinder - 5"	

- Kit or Assembly - includes all items indented underneath.
★ Included in seal repair kit Part # 19964-LB.

Section CB-3



***Clam Bunk -
Main Control Valve***



Parts 01866 09/25/2000
25.00

CLAM BUNK CONTROL VALVE (Danfoss)

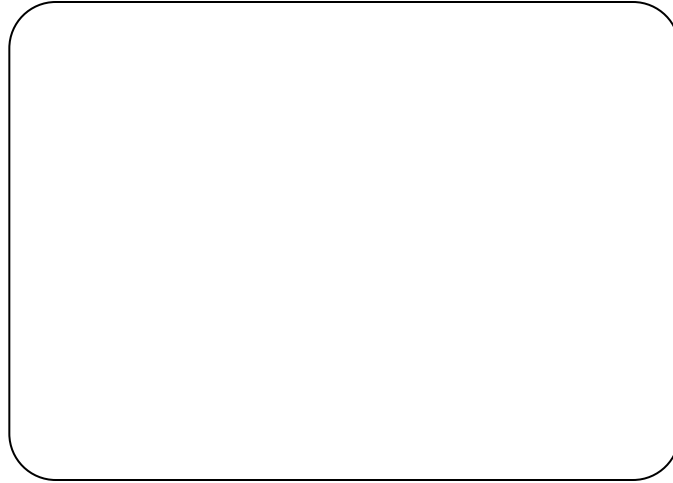
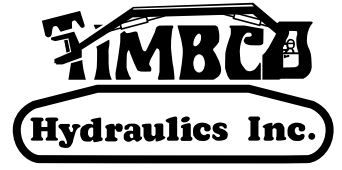
REF	PART #	QTY	DESCRIPTION	SEE PAGE
-	23454-CB	1	<input type="checkbox"/> CLAM BUNK CONTROL VALVE	
1	-----	6	NUT, hex - 8mm	
2	-----	6	WASHER, flat - 8mm	
3	NSS	1	<input type="checkbox"/> VALVE SECTION, inlet	
4	23899-CB	1	VALVE CARTRIDGE, pilot supply	
5	23900-CB	3	KIT, seal repair - face seals	
6	23901-CB	2	<input type="checkbox"/> VALVE SECTION, work	
7	NSS	1	HOUSING	
8	23902-CB	2	VALVE CARTRIDGE, anti-cav / shock	
9	23903-CB	1	COIL, solenoid end cap - 12V	
	23904-CB	1	COIL, solenoid end cap - 24V	
10	-----	4	BOLT, allen head - 6mm x 33mm	
11	23905-CB	1	KIT, seal repair - solenoid end cap face	
12	-----	1	CUP, pilot	
13	-----	1	BOLT, allen head - 6mm	
14	23906-CB	1	KIT, seal repair - pilot cup face	
15	NSS	1	VALVE SECTION,outlet	
16	-----	3	ROD, tie - 8mm	

Kit or Assembly - includes all items indented underneath.

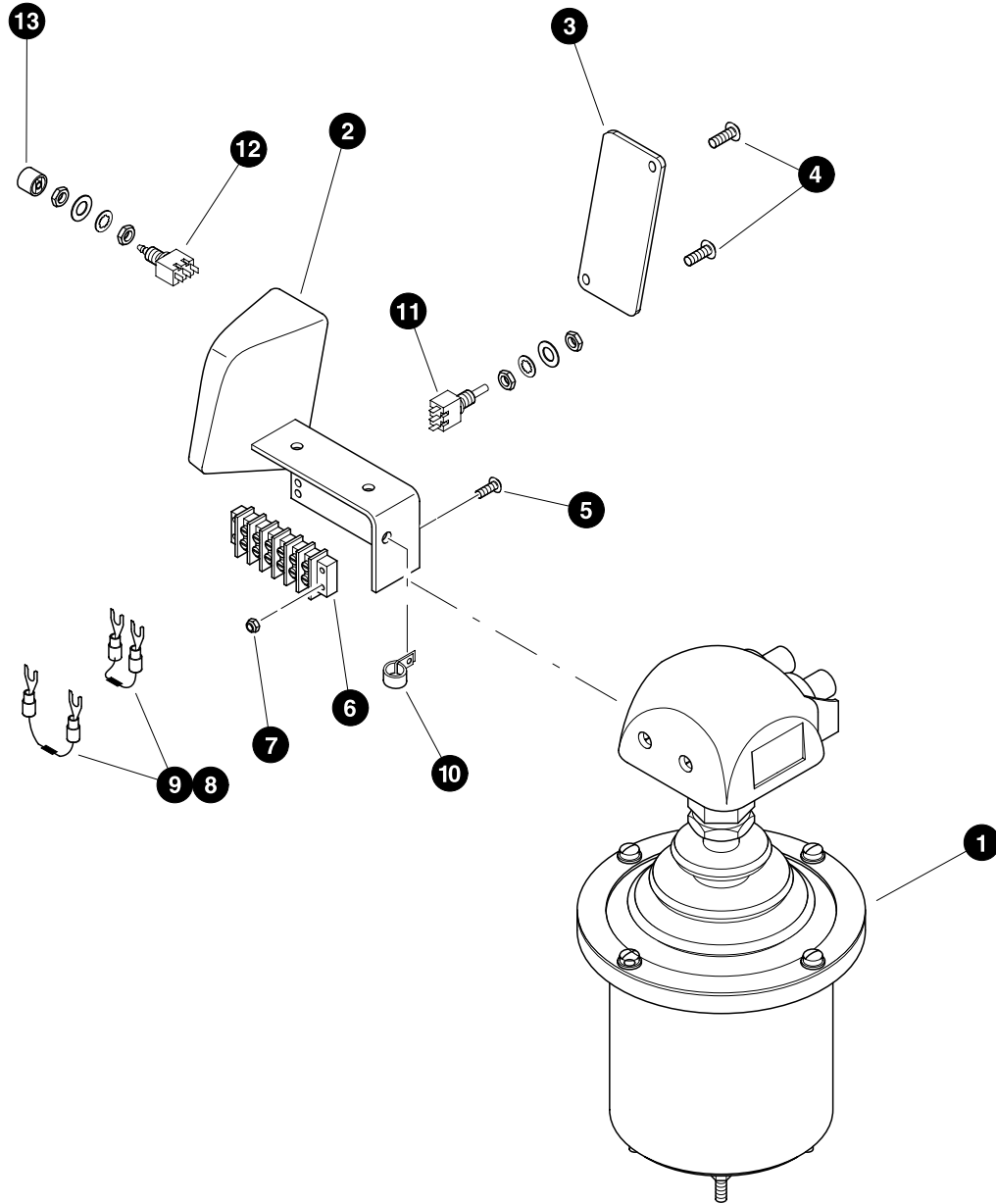
Note:

Due to warranty policy restrictions imposed by Timbco's component suppliers, it is not recommended that the component be disassembled further than is shown in the illustration.

Section CB-4



Clam Bunk - Electrical Controls

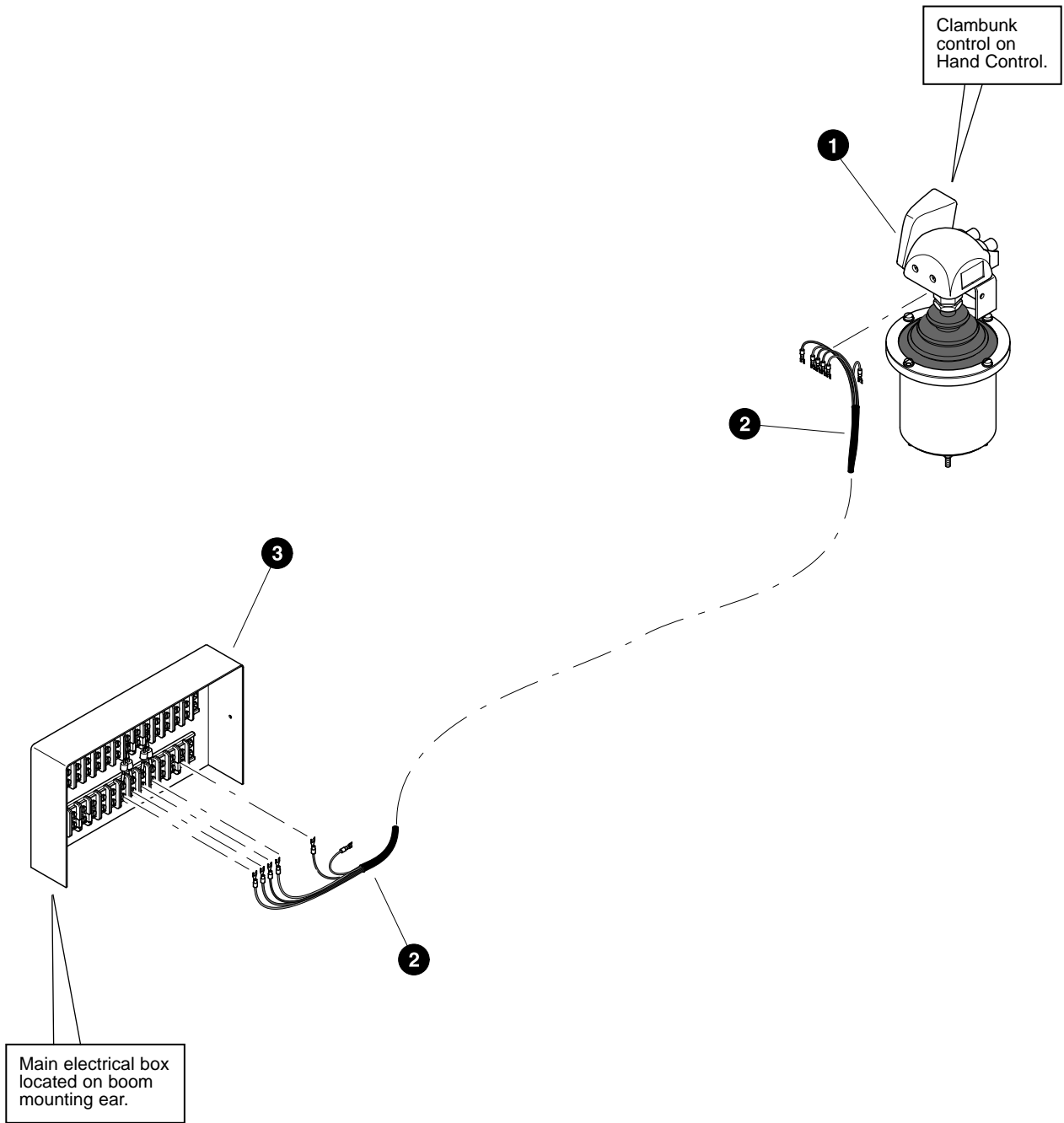


Parts 01498 12/03/99
50.00

ELECTRONIC HAND (CLAM BUNK) CONTROL (Left and Right Clambunk Hand Controls)

REF	PART #	QTY	DESCRIPTION	SEE PAGE
1	REF.	1	<input checked="" type="checkbox"/> HAND CONTROL, electronic - 3-axis	CB-4-4
2	22858-CB	1	<input type="checkbox"/> BRACKET, switch housing - RH	
	22859-CB	1	<input type="checkbox"/> BRACKET, switch housing - LH	
3	NSS.	1	PLATE, cover	
4	22862-CB	2	SCREW, machine - #10 - 24 x 1/2"	
5	22863-CB	2	SCREW, machine - #6 - 32 x 1/2"	
6	22860-CB	1	STRIP, terminal	
7	22865-CB	2	NUT, nylock - #6 - 32	
8	22866-CB	1	DIODE, aux pad	
9	22867-CB	1	TERMINAL, spade	
10	22864-CB	1	CLAMP, harness	
11	22861-CB	1	SWITCH, toggle <i>(Includes mounting hardware)</i>	
12	22484-CB	1	SWITCH, push button <i>(Includes mounting hardware)</i>	
13	22485-CB	1	CAP, push button switch	

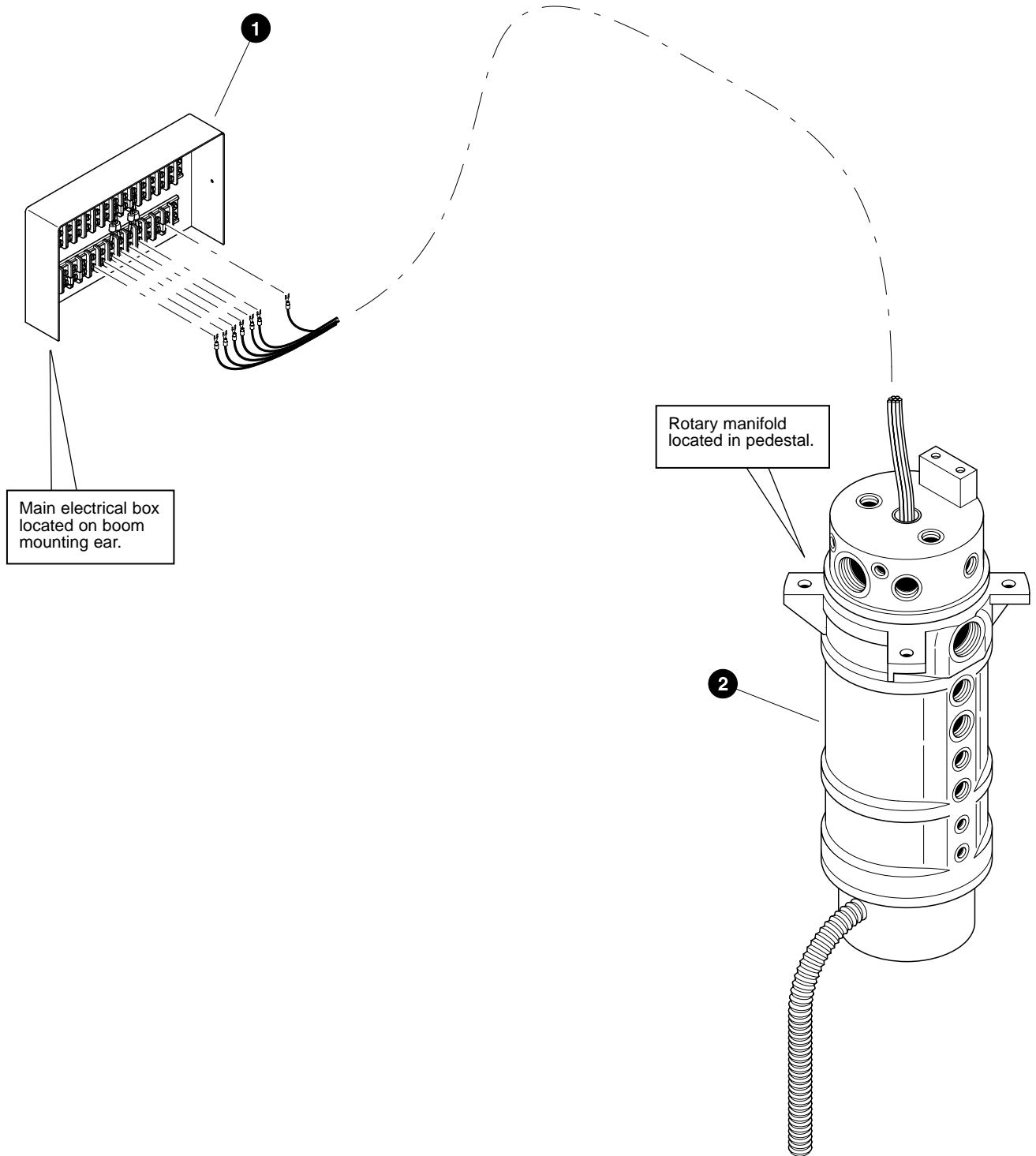
- See referenced page for component or assembly breakdown.
 Kit or Assembly - includes all items indented underneath.



ELECTRICAL CONNECTIONS (Hand Control to Electrical Terminal Box)

REF	PART #	QTY		DESCRIPTION	SEE PAGE
1	REF.	1	✓	COMMAND CONTROL BOX - LH & RH	CB-4-2
2	-----	1		HARNESS, wire	
3	REF.	1	✓	MAIN ELECTRICAL BOX	CB-4-8

- ✓ See referenced page for component or assembly breakdown.
- ☐ Kit or Assembly - includes all items indented underneath.

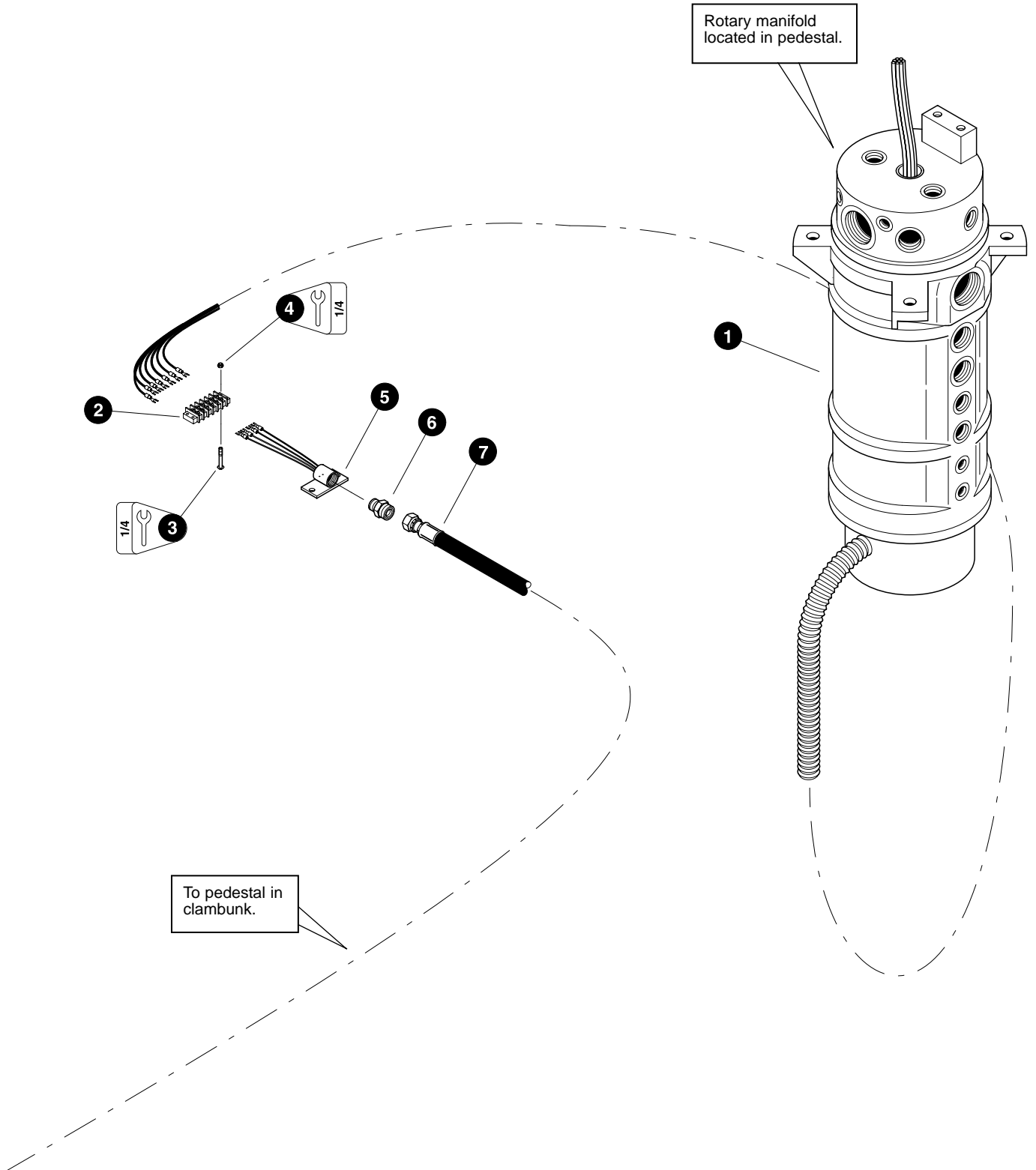


Parts 01380 10/04/99
25.00

ELECTRICAL CONNECTIONS (Electrical Terminal Box To Rotary Manifold)

REF	PART #	QTY		DESCRIPTION	SEE PAGE
1	REF.	1	✓	MAIN ELECTRICAL BOX	CB-4-8
2	REF.	1		ROTARY MANIFOLD	UP-1-6

- ✓ See referenced page for component or assembly breakdown.
- ☐ Kit or Assembly - includes all items indented underneath.

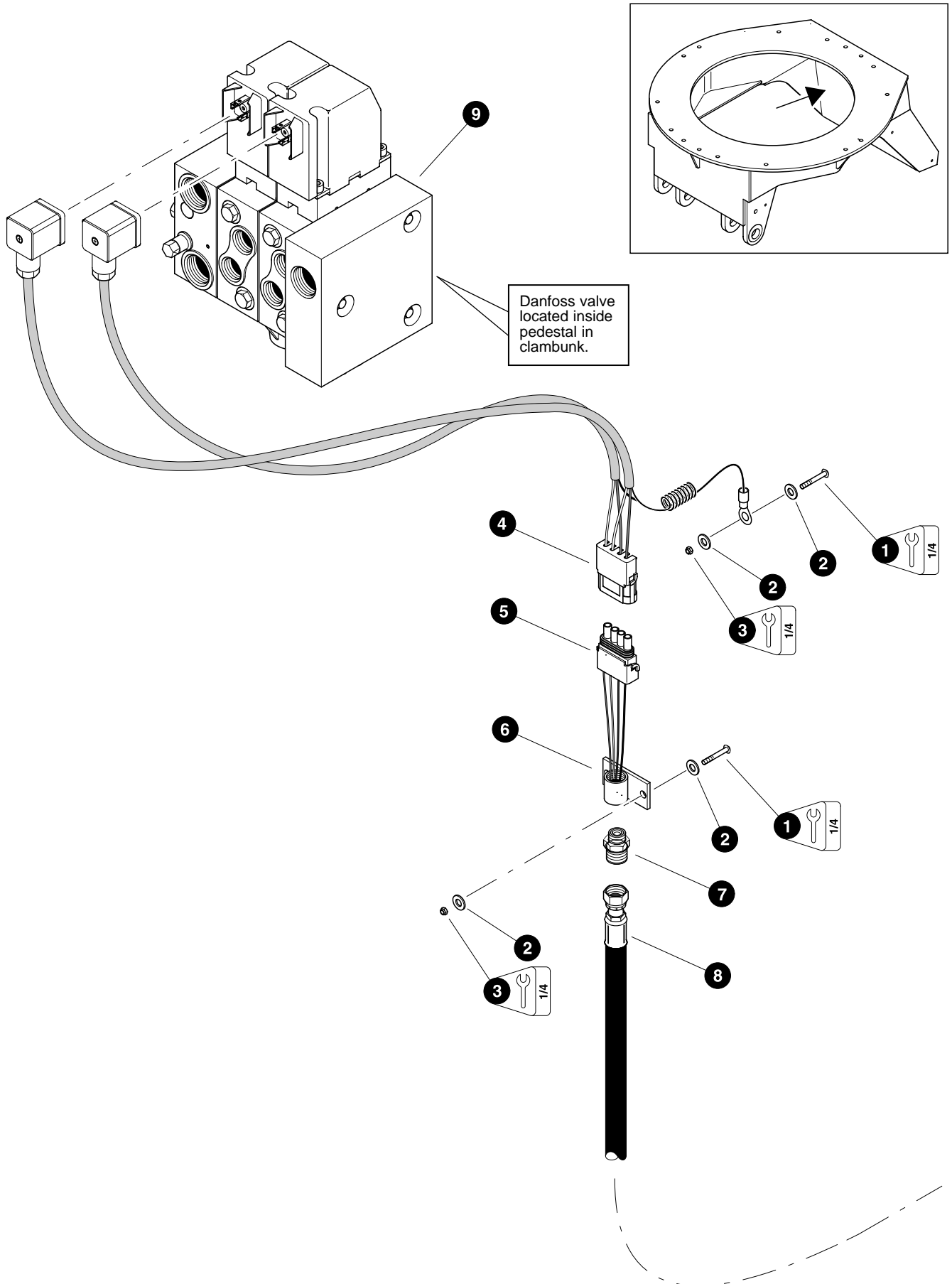


Parts 01382 10/04/99
25.00

ELECTRICAL CONNECTIONS (Turntable Riser To Clam Bunk)

REF	PART #	QTY	DESCRIPTION	SEE PAGE
1	REF.	1	ROTARY MANIFOLD	UP-1-6
2	24061-CB	1	STRIP, terminal - 14 position <i>(Used on machines PDN# 135FWD and above)</i>	
	19171-CB	1	STRIP, terminal - 6 position <i>(Used on machines PDN# 134FWD and below)</i>	
3	16127-CB	2	SCREW, machine #10-24 x 1-1/4"	
4	16131-CB	2	NUT, nylock #10-24	
5	12222-CB	1	BRACKET, gauge mount	
6	16295-CB	1	CONNECTOR - STR FF2031T - 0604S	
7	20617-CB	1	HOSE ASSEMBLY - 2240-06-060S-060S	

- ✓ See referenced page for component or assembly breakdown.
- ☐ Kit or Assembly - includes all items indented underneath.



Parts 01988 01/22/01
37.50

ELECTRICAL CONNECTIONS (Clam Bunk Control Valve)

REF	PART #	QTY	DESCRIPTION	SEE PAGE
1	16127-CB	2	SCREW, machine #10-24 x 1-1/4"	
2	10800-CB	4	WASHER, FLAT - 1/4"	
3	16131-CB	2	NUT, nylock #10-24	
4	24098-CB	1	HARNESS, wire- clambunk valve	
5	23132-CB	1	CONNECTOR, weatherpack	
	22226-CB	4	TERMINAL, male	
	22225-CB	4	SEAL, terminal	
6	12222-CB	1	BRACKET, gauge mount	
7	16295-CB	1	CONNECTOR - STR FF2031T - 0604S	
8	20617-CB	1	HOSE ASSEMBLY - 2240-06-060S-060S	
9	REF.	1	✓ CLAM BUNK CONTROL VALVE	CB-3-2

- ✓ See referenced page for component or assembly breakdown.
- ☐ Kit or Assembly - includes all items indented underneath.