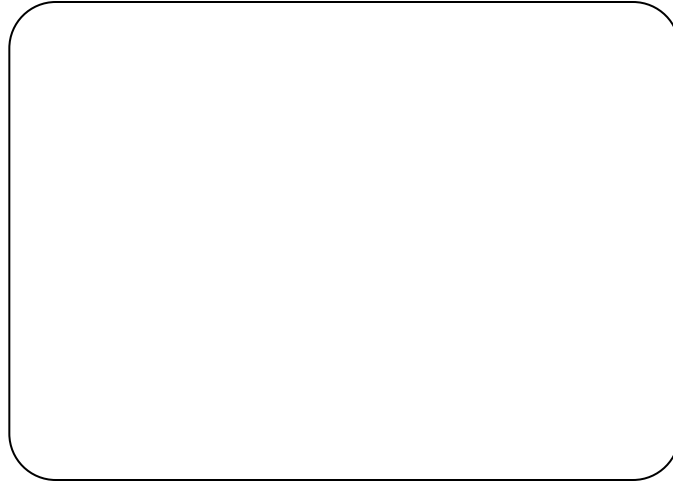
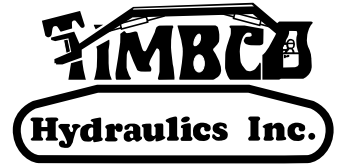
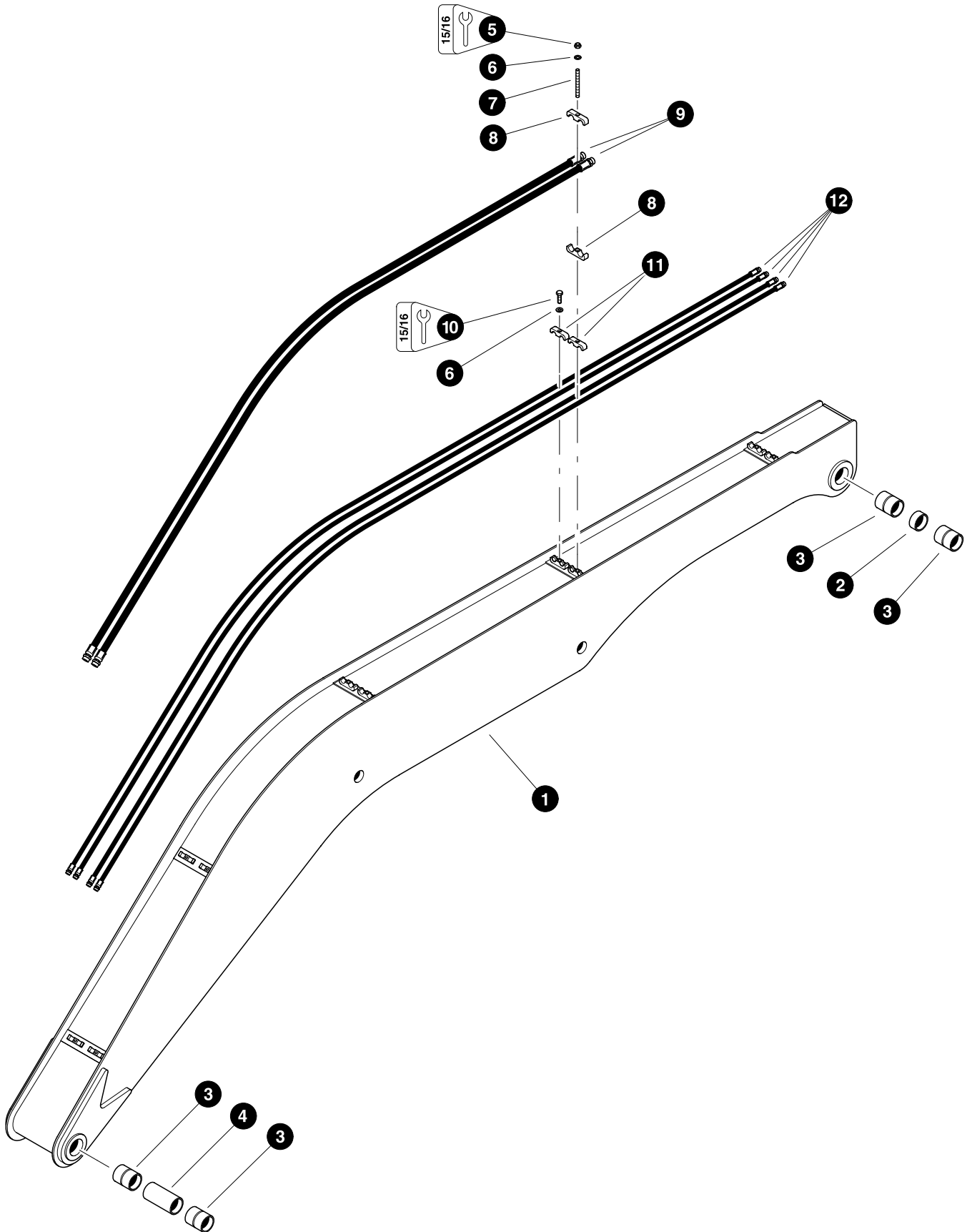


Section LB-1



Loader Booms - Main Boom

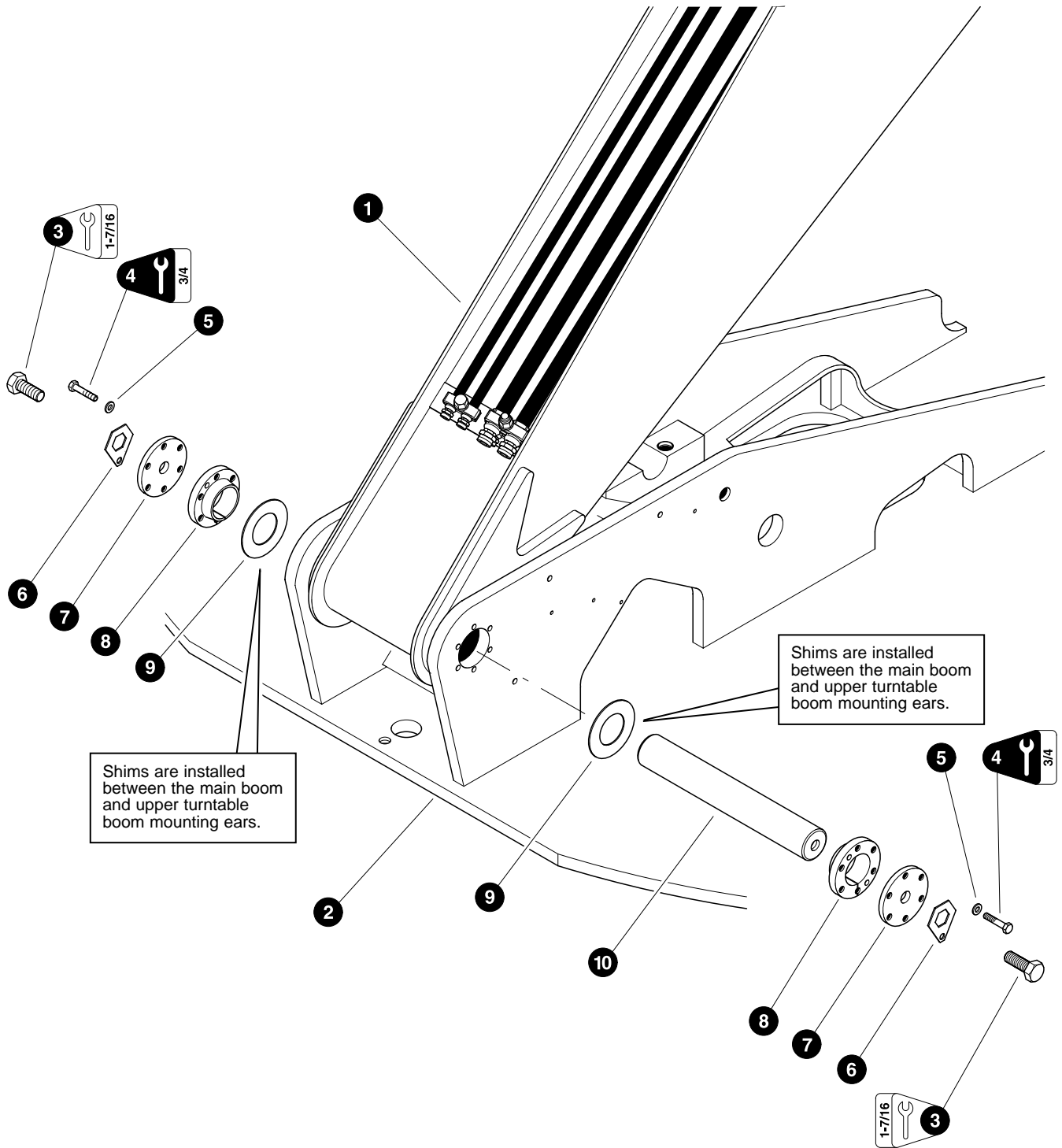


Parts 00523 04/04/98
6.25

MAIN BOOM COMPONENTS

REF	PART #	QTY	DESCRIPTION	SEE PAGE
1	85100-LB	1	<input type="checkbox"/> WELDMENT, main boom	
2	20049-LB	1	SPACER, nose - 3" x 1-1/2"	
3	11706-LB	4	BUSHING - 3" x 4-1/4"	
4	12365-LB	1	SPACER, base - 3" x 7-1/2"	
5	15563-LB	4	NUT, nylock - 5/8"	
6	10771-LB	10	WASHER, SAE flat - 5/8"	
7	15672-LB	4	STUD - 5/8" x 5-1/4"	
8	19324-LB	5	CLAMP, tubeline - 3/4" x 3/4"	
9	20794-LB	2	HOSE ASSEMBLY - 4155-12-120MS-120MS	
10	15526-LB	6	BOLT - 5/8" x 2"	
11	15272-LB	10	CLAMP, tubeline - 1/2" x 1/2"	
12	20795-LB	4	HOSE ASSEMBLY - 4207-08-080MS-080MS	

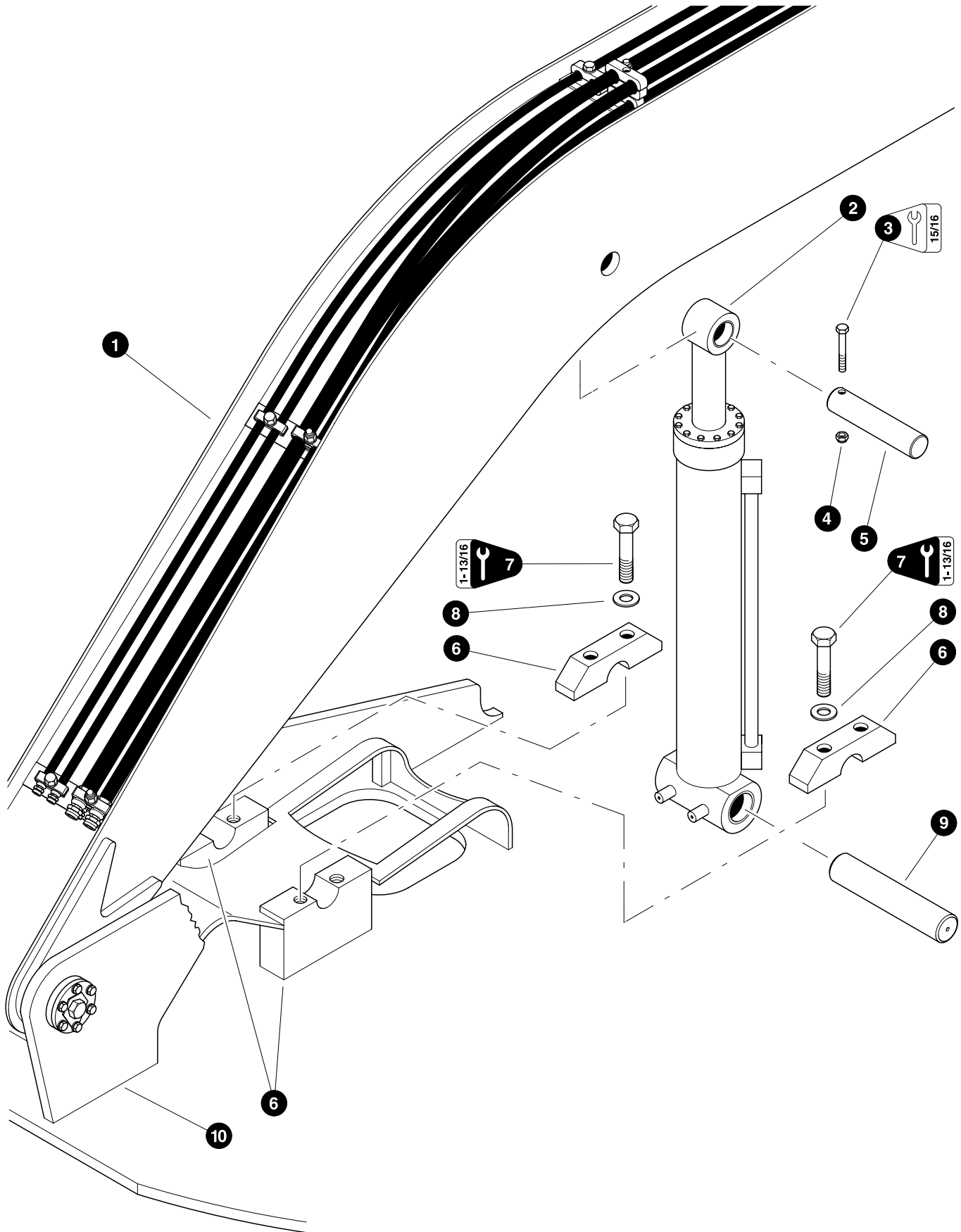
Kit or Assembly - includes all items indented underneath.



MAIN BOOM INSTALLATION

REF	PART #	QTY	DESCRIPTION	SEE PAGE
1	REF.	1	✓ MAIN BOOM ASSEMBLY	LB-1-2
2	REF.	1	✓ UPPER TURNTABLE WELDMENT	
3	15552-LB	2	BOLT - 1" x 2-1/2"	
4	15565-LB	12	BOLT - 1/2" x 2-1/2" (Torque to 100 ft.lbs. (135 Nm))	
5	15534-LB	12	WASHER, SAE flat - 1/2"	
6	12116-LB	2	LOCK, center tapered hub bolt	
7	12115-LB	2	CAP, tapered hub	
8	12352-LB	2	HUB, tapered - 1-1/4" plate	
9	19150-LB	AR	SHIM - 1/4" thick	
	16633-LB	AR	SHIM - 7 gauge	
	16637-LB	AR	SHIM - 10 gauge	
	16638-LB	AR	SHIM - 14 gauge	
10	18050-LB	1	PIN, chromed - 3" x 20"	

- ✓ See referenced page for component or assembly breakdown.
- ☐ Kit or Assembly - includes all items indented underneath.



Parts 00525 04/06/98
12.50

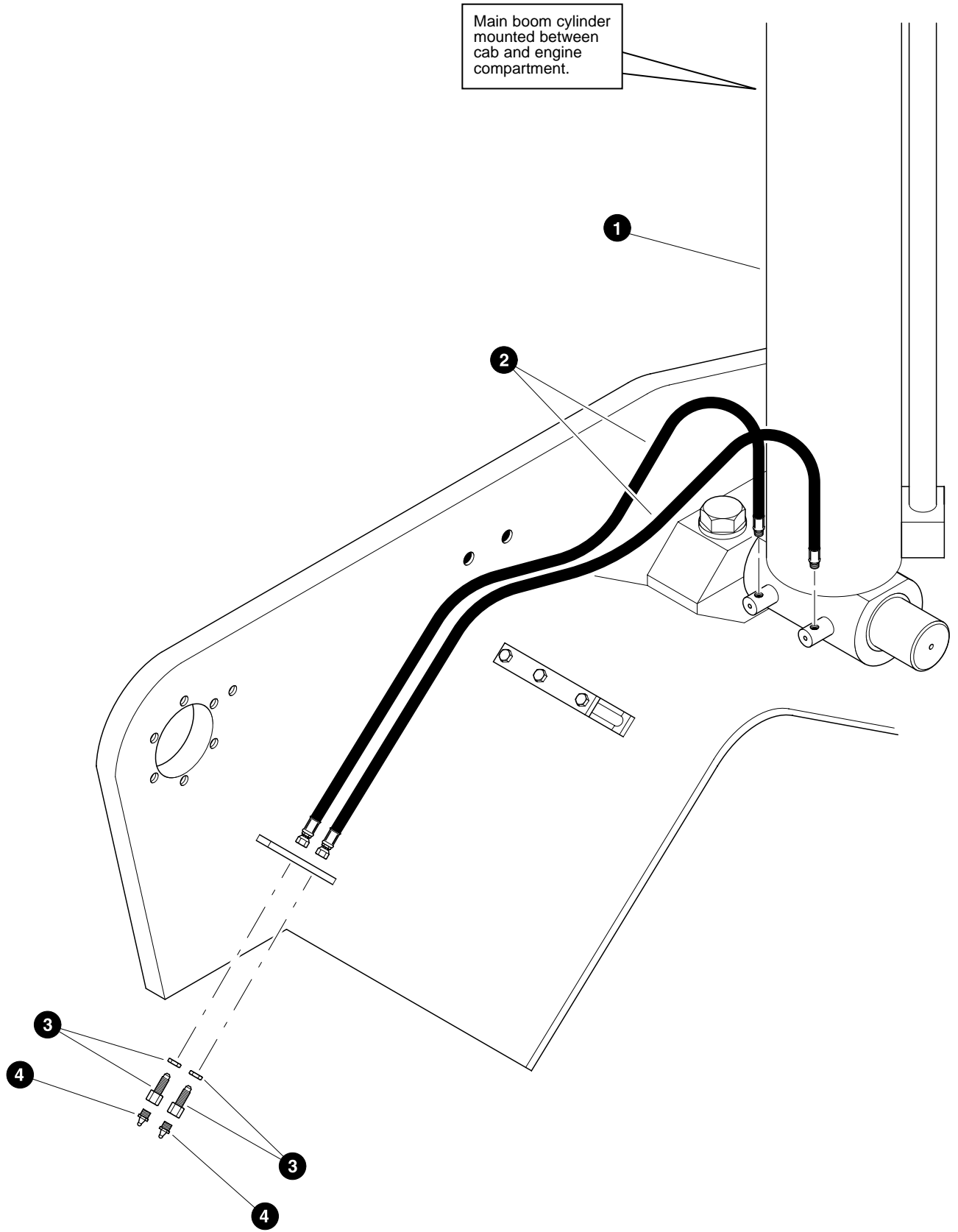
MAIN BOOM (HOIST) CYLINDER INSTALLATION

REF	PART #	QTY	DESCRIPTION	SEE PAGE
1	REF.	1	✓ MAIN BOOM ASSEMBLY	LB-1-2
2	REF.	1	✓ MAIN BOOM (HOIST) CYLINDER	LB-4-2
3	10838-LB	1	BOLT - 5/8" x 5"	
4	15563-LB	1	NUT, nylock - 5/8"	
5	18895-LB	1	PIN, chromed - 2-1/2" x 13-7/8"	
6	12351-LB	2	☐ WELDMENT, pin retainer block - 3" pin (<i>See note below</i>)	
	12066-LB	1	BLOCK, bottom	
	12067-LB	1	BLOCK, top	
7	15543-LB	2	BOLT - 1-1/4" x 5-1/2" (Torque to 1500 ft.lbs. (2000 Nm))	
8	15544-LB	2	WASHER, flat - 1-1/4"	
9	18053-LB	1	PIN, chromed - 3" x 14-1/2"	
10	REF.	1	✓ UPPER TURNTABLE WELDMENT	

- ✓ See referenced page for component or assembly breakdown.
- ☐ Kit or Assembly - includes all items indented underneath.

Note:

The pin retainer block weldments are machined assembled, therefore, the top (PN# 12067) and bottom (PN# 12066) blocks are a matched set. Timbco recommends installing a complete block weldment if either the top or bottom block must be replaced. This will insure the two halves mate properly to retain the pin.



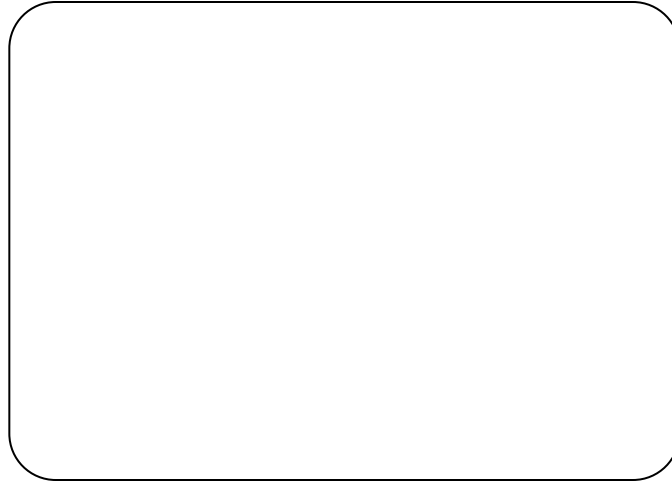
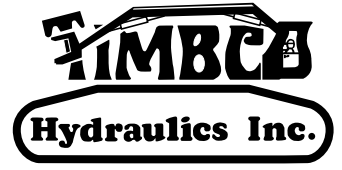
Parts 01884 11/07/2000
25.00

MAIN BOOM (HOIST) CYLINDER GREASE LINES

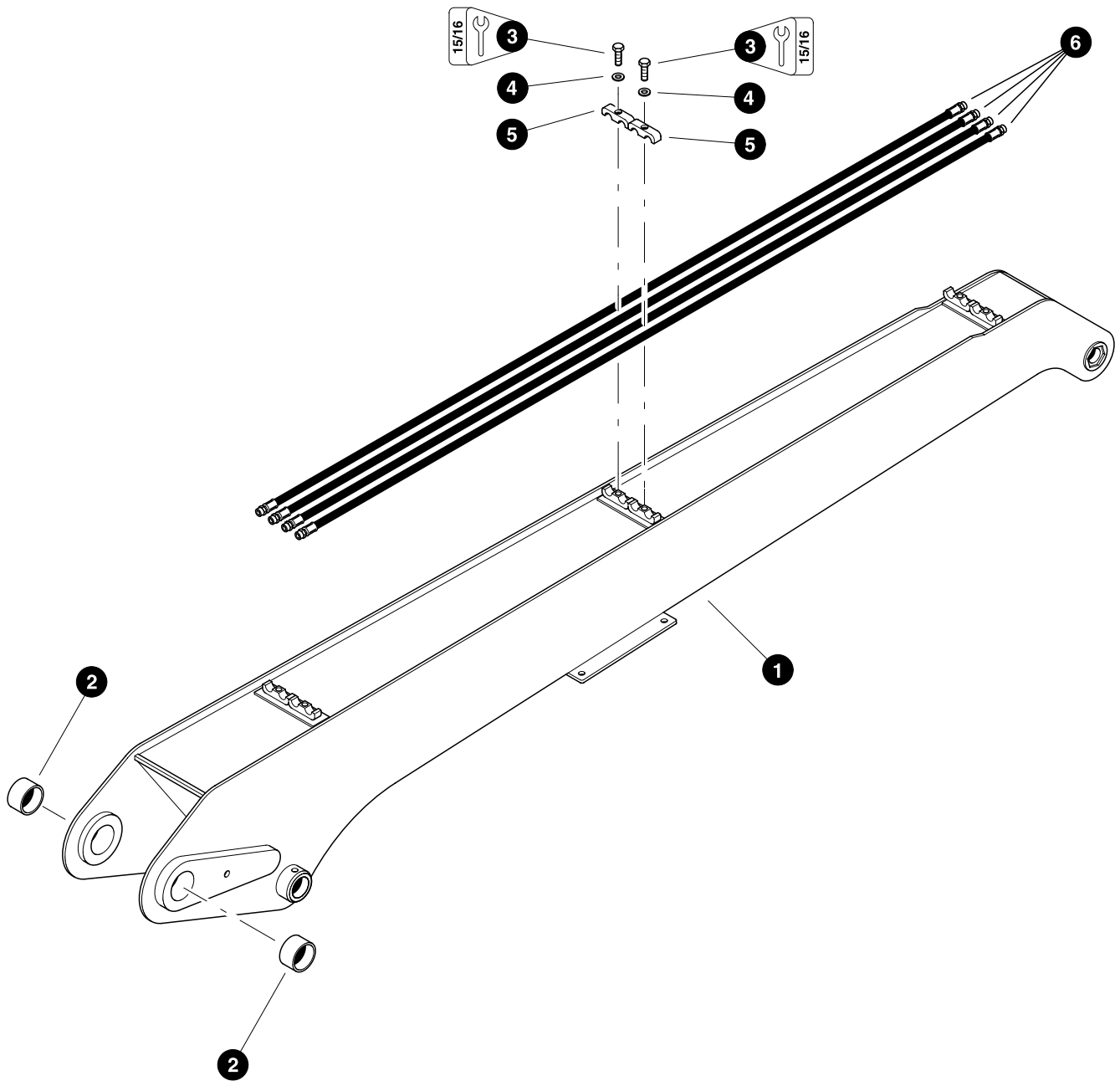
REF	PART #	QTY	DESCRIPTION	SEE PAGE
1	REF.	1	✓ MAIN BOOM (HOIST) CYLINDER	LB-4-2
2	16980-LB	2	HOSE ASSEMBLY - 2044-04-04PS-04JS (<i>Grease line from rear of upper turntable to base of main boom cylinder</i>)	
3	15658-LB	2	CONNECTOR, straight bulkhead - 2239-2-4S	
4	10704-LB	2	FITTING, straight grease - 1/8" pipe thread	

✓ See referenced page for component or assembly breakdown.

Section LB-2



Loader Booms - Stick Boom

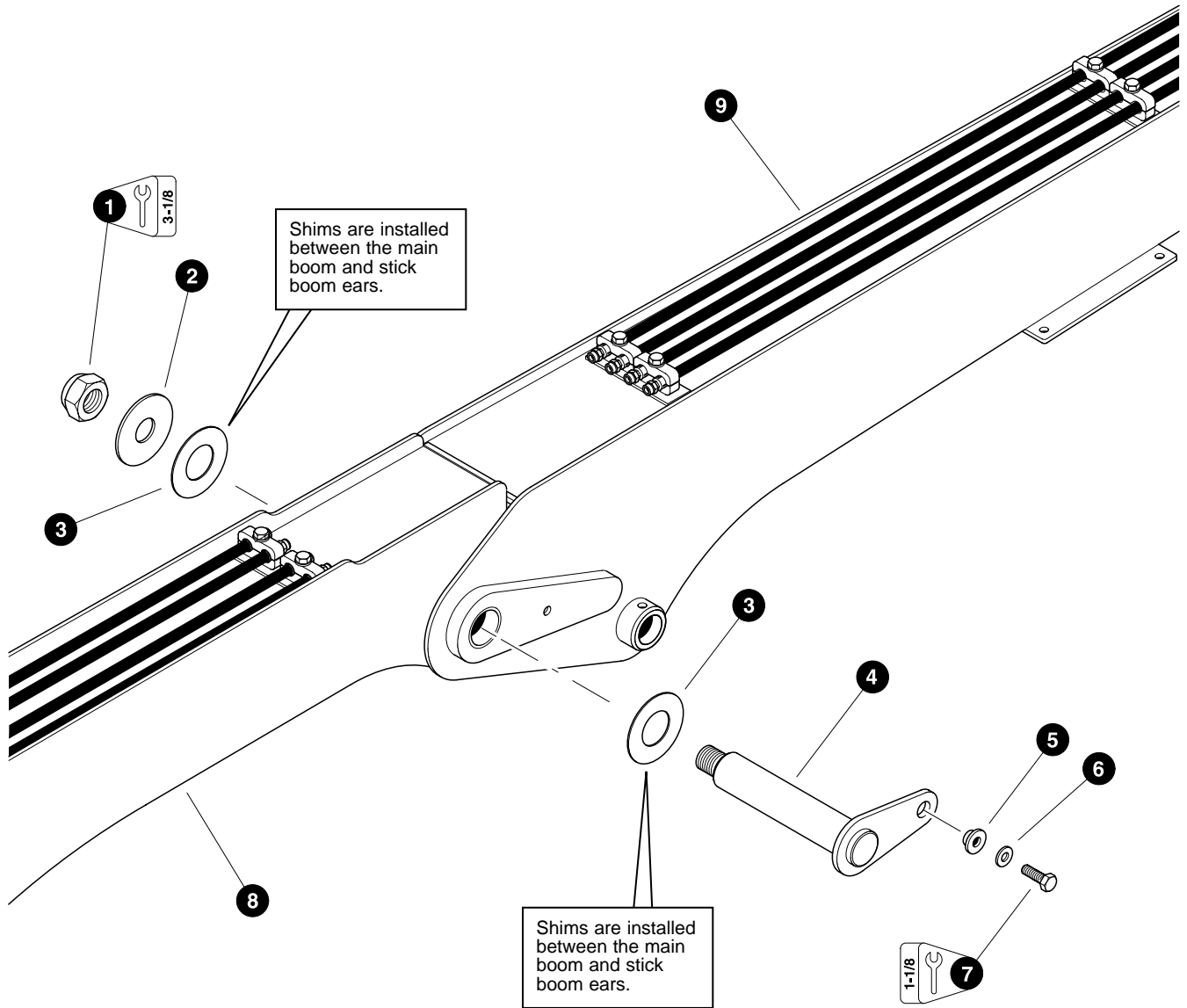


Parts 00526 04/06/98
9.375

STICK BOOM COMPONENTS

REF	PART #	QTY	DESCRIPTION	SEE PAGE
1	85000-LB	1	<input type="checkbox"/> WELDMENT, stick boom	
2	20048-LB	2	BUSHING - 3" x 2"	
3	15526-LB	6	BOLT - 5/8" x 2"	
4	10771-LB	6	WASHER, SAE flat - 5/8"	
5	15272-LB	6	CLAMP, tubeline - 1/2" x 1/2"	
6	20793-LB	4	HOSE ASSEMBLY - 4108-08-08OMS-08OMS	

Kit or Assembly - includes all items indented underneath.

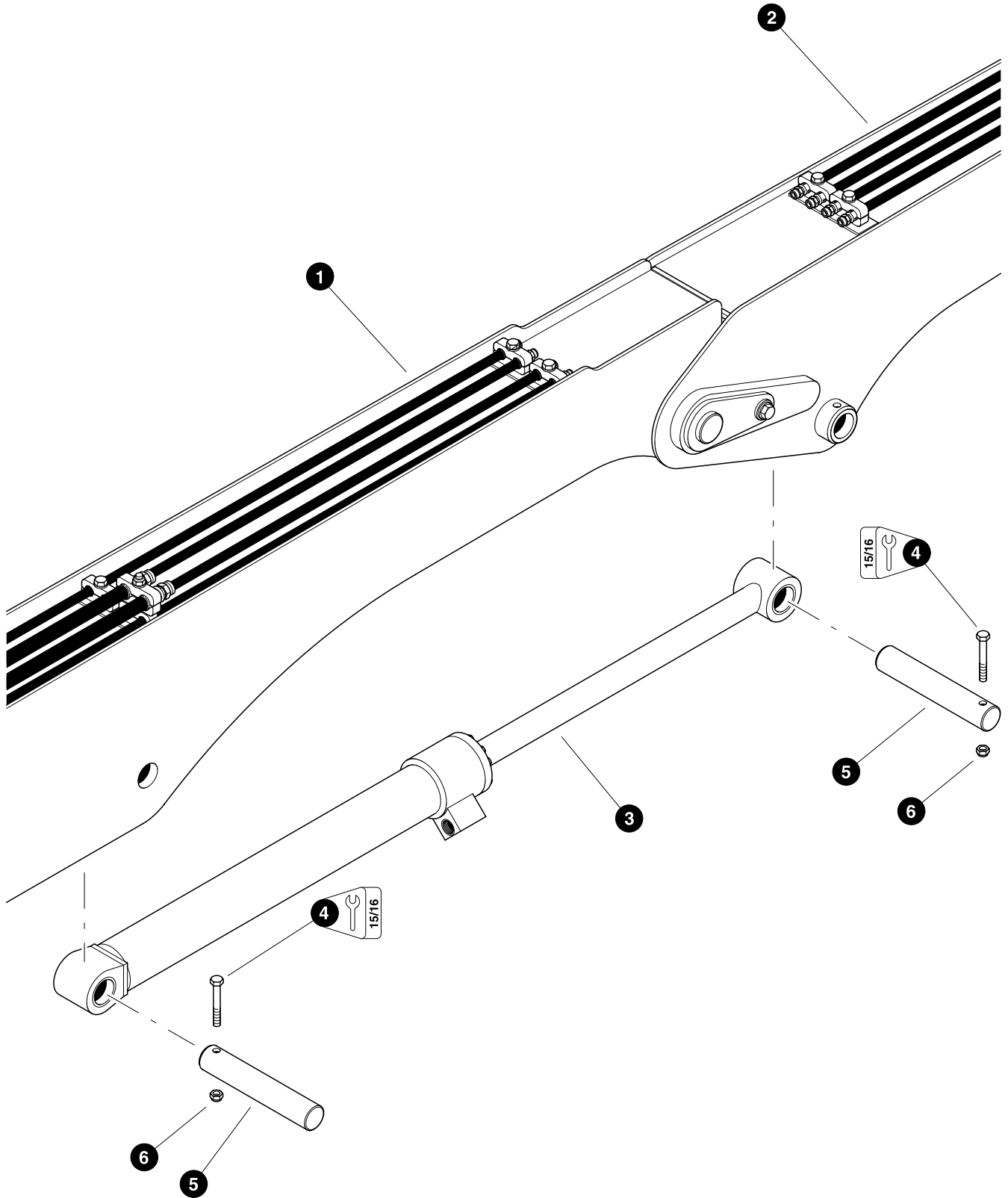


Parts 00527 04/06/98
12.50

STICK BOOM INSTALLATION

REF	PART #	QTY	DESCRIPTION	SEE PAGE
1	10728-LB	1	NUT, nylock - 2"	
2	19384-LB	1	WASHER, burned	
3	19150-LB	AR	SHIM - 1/4" thick	
	16633-LB	AR	SHIM - 7 gauge	
	16637-LB	AR	SHIM - 10 gauge	
	16638-LB	AR	SHIM - 14 gauge	
4	20044-LB	1	PIN, boom knuckle - 3"	
5	18570-LB	1	WASHER, pin retaining	
6	15550-LB	1	WASHER, SAE flat - 3/4"	
7	15549-LB	1	BOLT - 3/4" x 2"	
8	REF.	1	✓ MAIN BOOM ASSEMBLY	LB-1-2
9	REF.	1	✓ STICK BOOM ASSEMBLY	LB-2-2

✓ See referenced page for component or assembly breakdown.

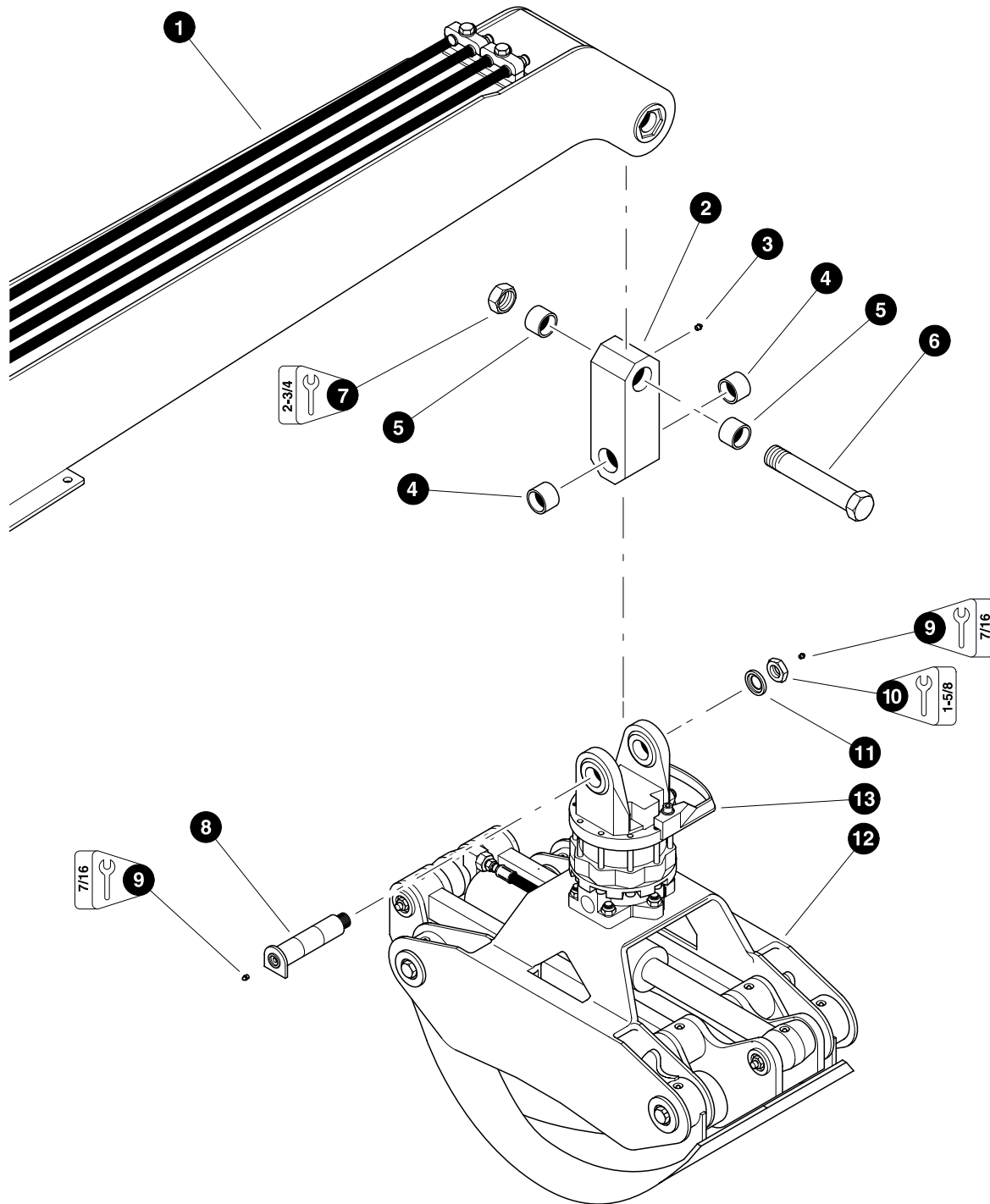


Parts 00528 04/06/98
12.50

STICK BOOM (JIB) CYLINDER INSTALLATION

REF	PART #	QTY	DESCRIPTION	SEE PAGE
1	REF.	1	✓ MAIN BOOM ASSEMBLY	LB-1-2
2	REF.	1	✓ STICK BOOM ASSEMBLY	LB-2-2
3	REF.	1	✓ STICK BOOM (JIB) CYLINDER	LB-4-4
4	10838-LB	2	BOLT - 5/8" x 5"	
5	18895-LB	2	PIN, chromed - 2-1/2" x 13-7/8"	
6	15563-LB	2	NUT, nylock - 5/8"	

✓ See referenced page for component or assembly breakdown.

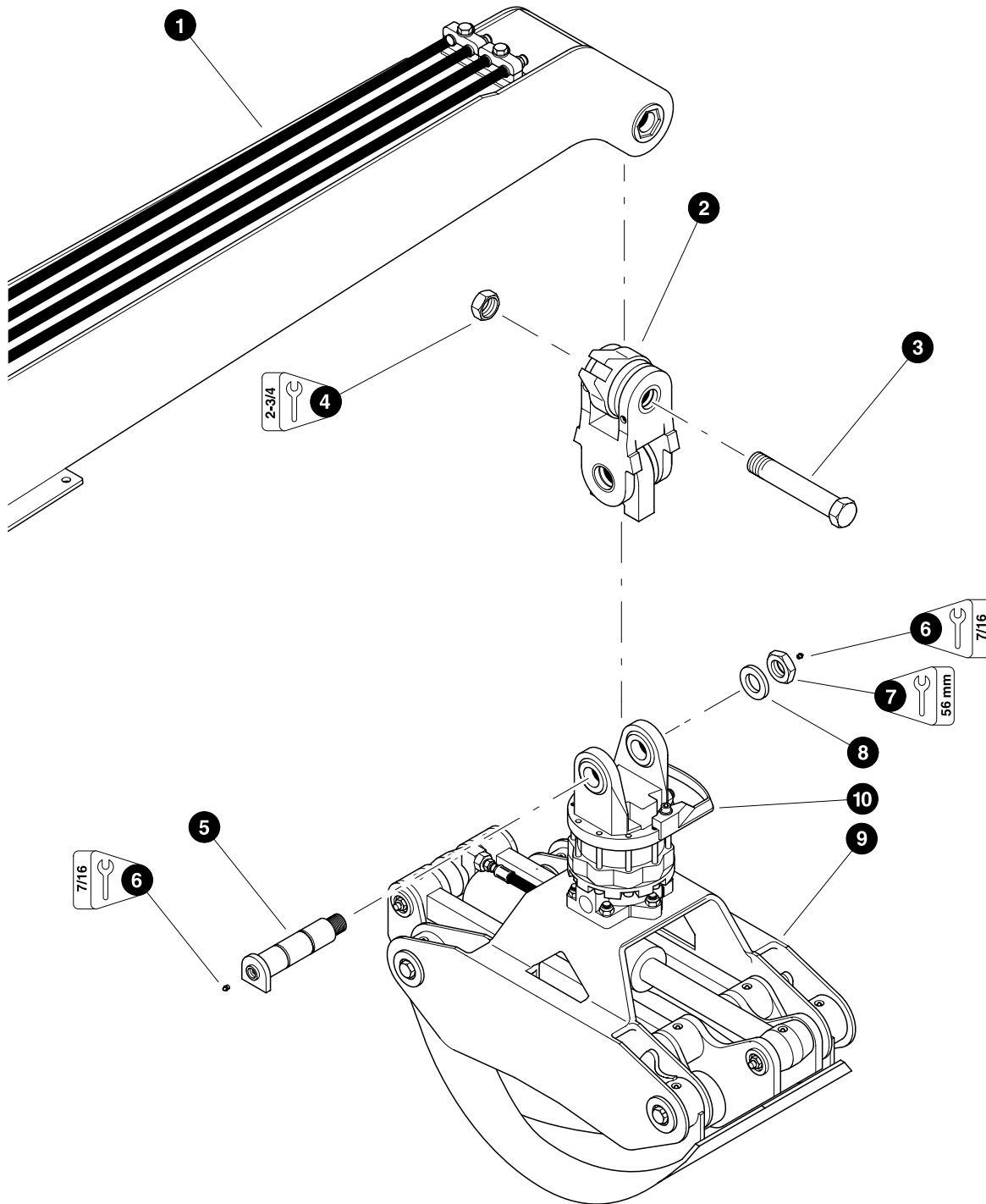


Parts 00529 04/06/98
12.50

HULTDINS SUPERGRIP 360S GRAPPLE INSTALLATION (With Standard TIMBCO Dangle Block)

REF	PART #	QTY	DESCRIPTION	SEE PAGE
1	REF.	1	<input checked="" type="checkbox"/> STICK BOOM ASSEMBLY	LB-2-2
2	19123-LB	1	<input type="checkbox"/> DANGLE BLOCK ASSEMBLY	
	80000-LB	1	BLOCK	
3	10704-LB	1	FITTING, grease - 1/8" pipe thread	
4	19118-LB	2	BUSHING - 45mm x 1-1/2"	
5	19117-LB	2	BUSHING - 1-3/4" x 1-1/2"	
6	19716-LB	1	PIN - 1-3/4" x 10-3/4"	
7	18402-LB	1	NUT, nylock - 1-3/4"	
8	19789-LB	1	PIN, grapple mount	
9	10704-LB	2	FITTING, grease - 1/8" pipe thread	
10	20205-LB	1	NUT, grapple mount pin	
11	20206-LB	1	WASHER, grapple mount pin	
12	REF.	1	<input type="checkbox"/> GRAPPLE - Hultdins 360S <i>(See Manufacturer's Manual)</i>	
13	REF.	1	ROTATOR - Hultdins GV17US <i>(See Manufacturer's Manual)</i>	

- See referenced page for component or assembly breakdown.
- Kit or Assembly - includes all items indented underneath.

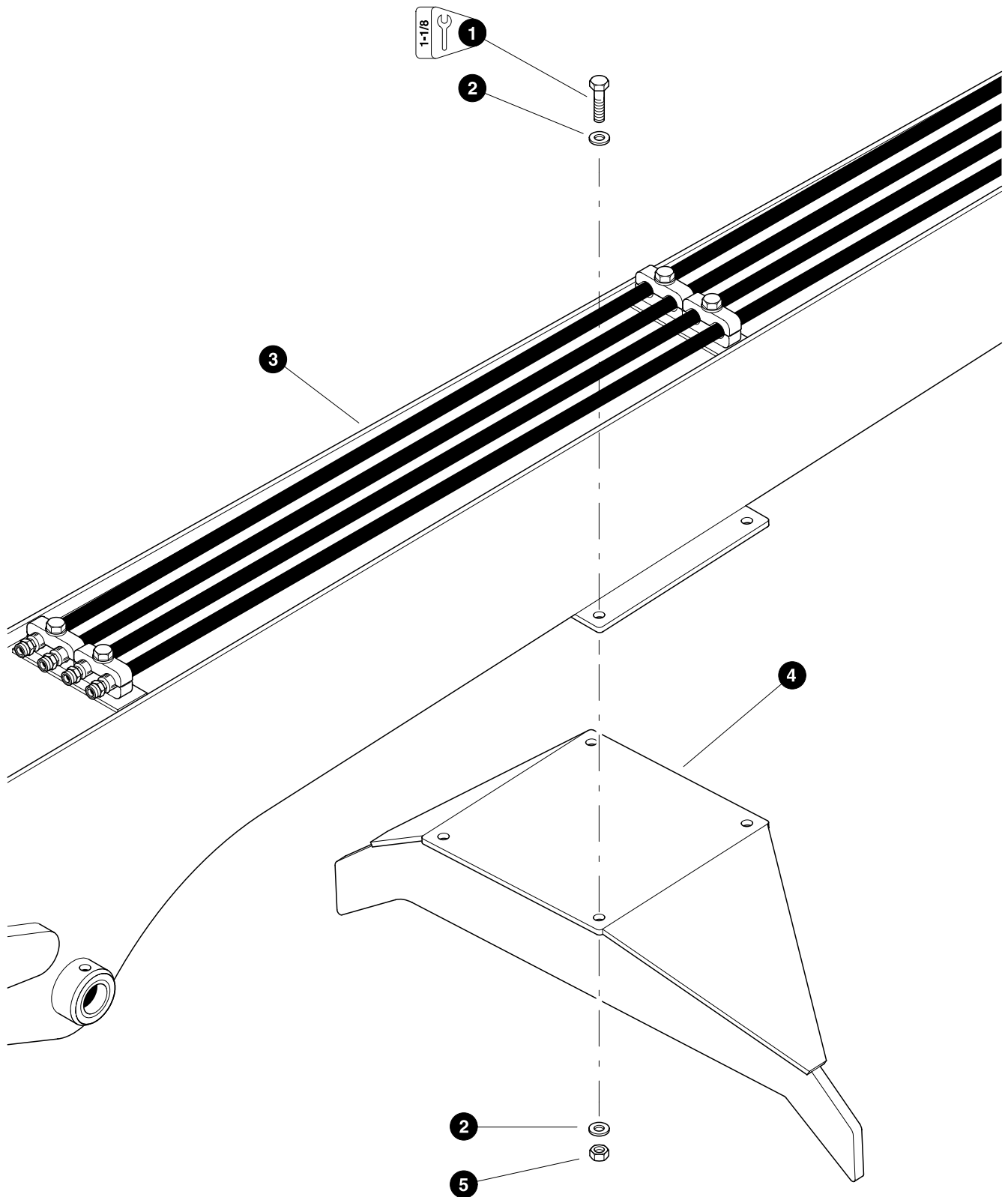


Parts 00530 04/06/98
12.50

HULTDINS SUPERGRIP 360S GRAPPLE INSTALLATION (With Optional QUADCO Snubber)

REF	PART #	QTY	DESCRIPTION	SEE PAGE
1	REF.	1	<input checked="" type="checkbox"/> STICK BOOM ASSEMBLY	LB-2-2
2	19790-LB	1	<input type="checkbox"/> SNUBBER	
3	19716-LB	1	PIN - 1-3/4" x 10-3/4"	
4	18402-LB	1	NUT, nylock - 1-3/4"	
5	19789-LB	1	<input type="checkbox"/> PIN, grapple mount	
6	10704-LB	2	FITTING, grease - 1/8" pipe thread	
7	NSS	1	NUT, grapple mount pin	
8	NSS	1	WASHER, grapple mount pin	
9	REF.	1	<input type="checkbox"/> GRAPPLE - Hultdins 360S <i>(See Manufacturer's Manual)</i>	
10	19788-LB	1	ROTATOR - Hultdins GV17US <i>(See Manufacturer's Manual)</i>	

- See referenced page for component or assembly breakdown.
- Kit or Assembly - includes all items indented underneath.



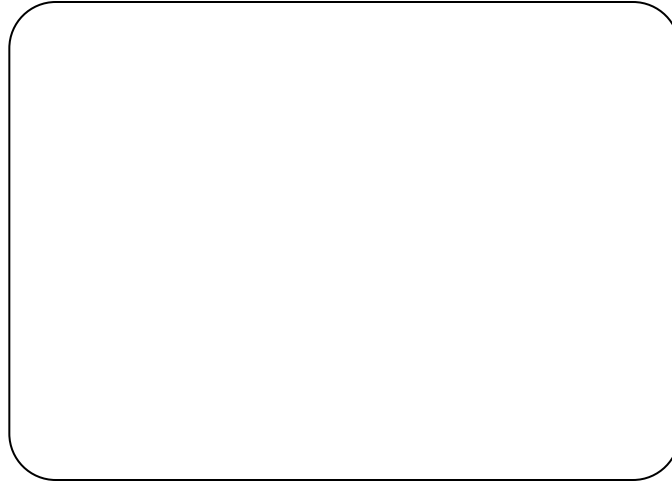
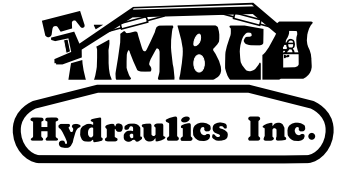
Parts 00531 04/06/98
18.75

OPTIONAL STICK BOOM MOUNTED HEEL

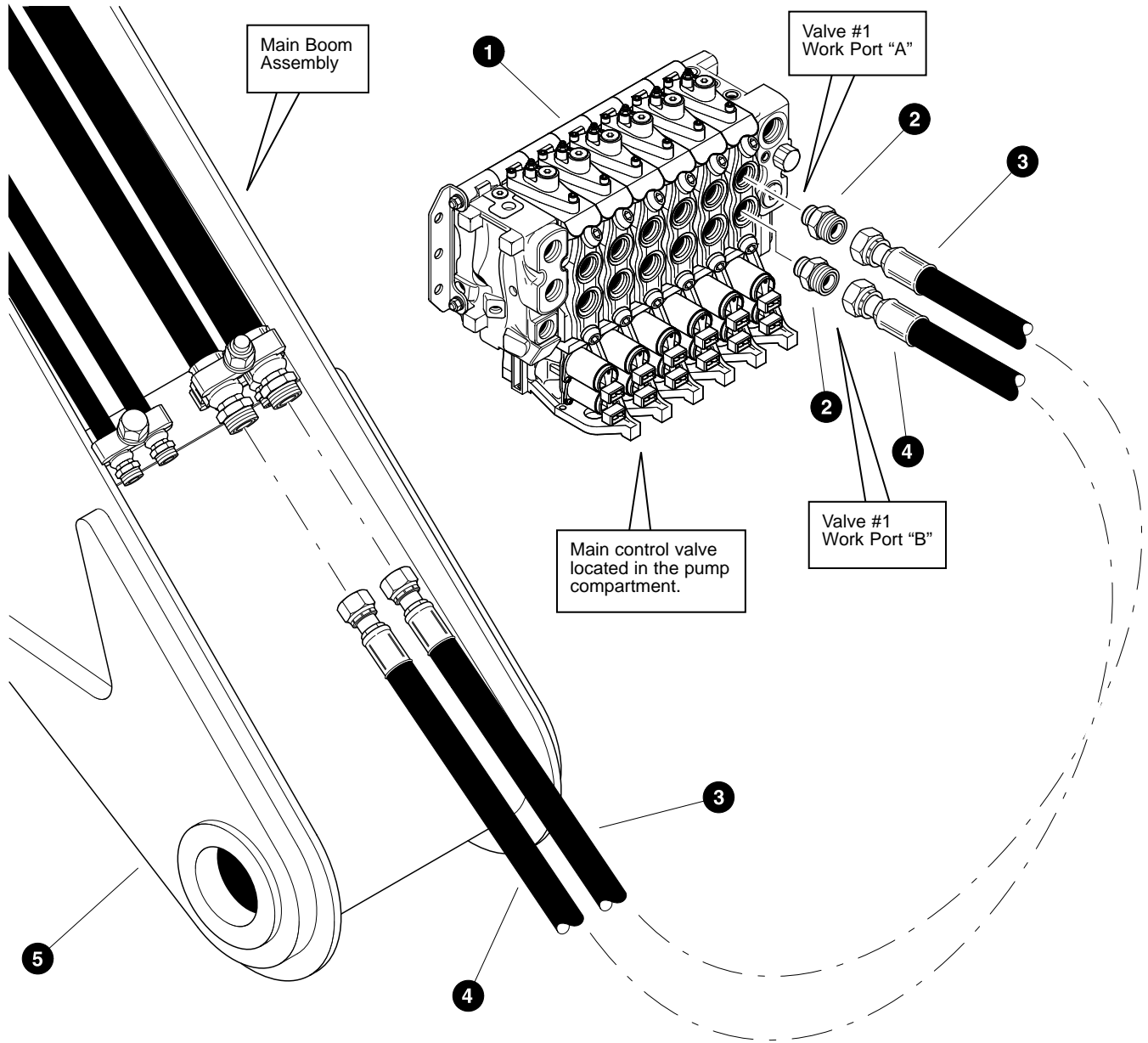
REF	PART #	QTY	DESCRIPTION	SEE PAGE
1	10736-LB	4	BOLT - 1/2" x 2"	
2	15534-LB	8	WASHER, SAE flat - 1/2"	
3	REF.	1	✓ STICK BOOM ASSEMBLY	LB-2-2
4	20858-LB	1	WELDMENT, stick boom heel	
5	10815-LB	4	NUT, lock - 1/2"	

✓ See referenced page for component or assembly breakdown.

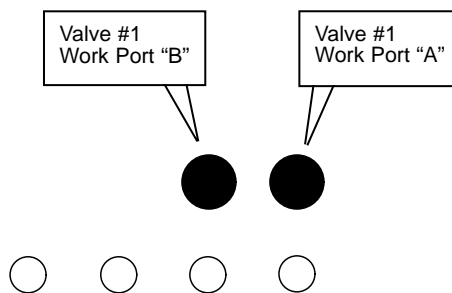
Section LB-3



Loader Booms - Hydraulic Circuits



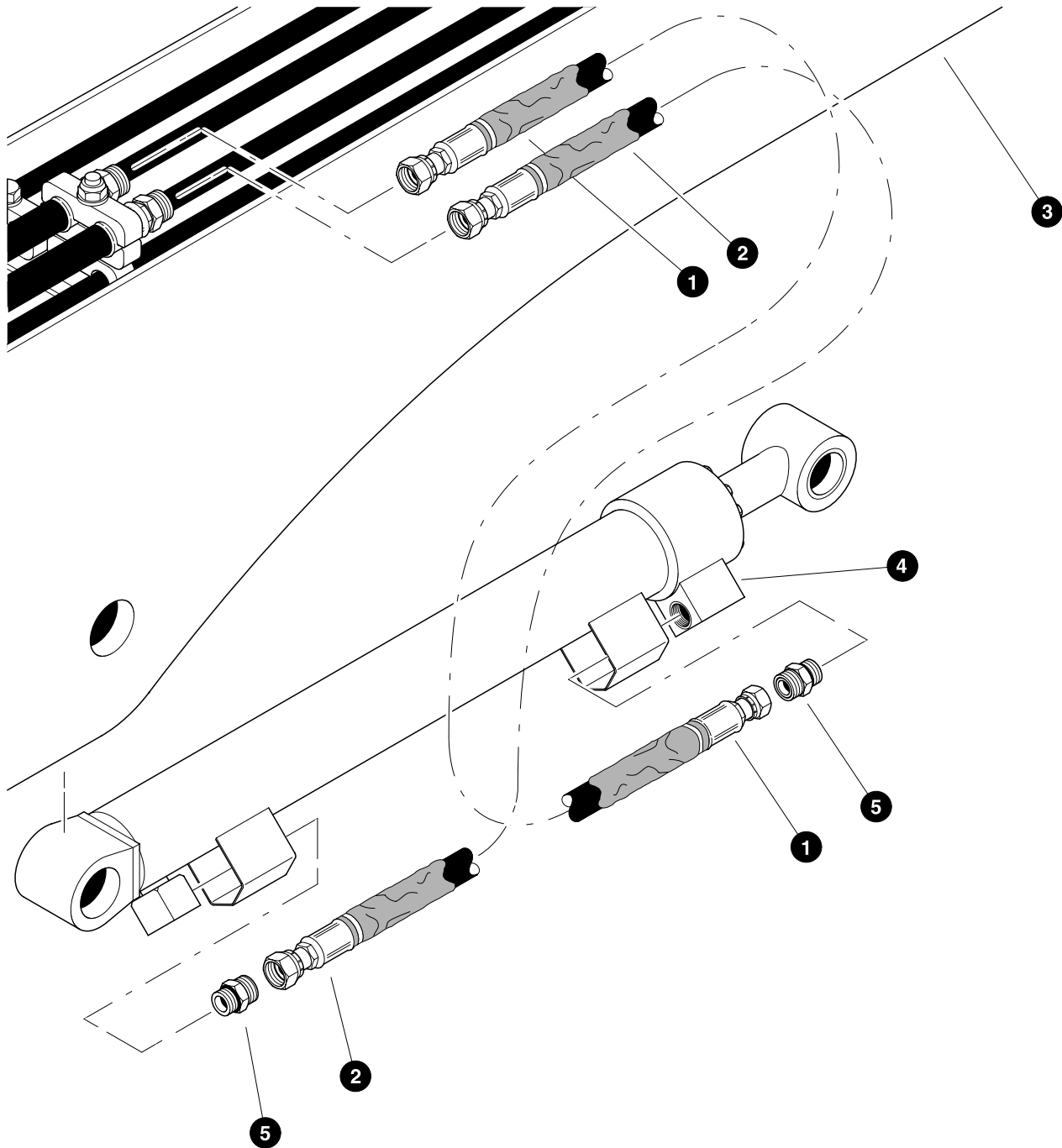
Main boom hose line connections as viewed from rear of machine.



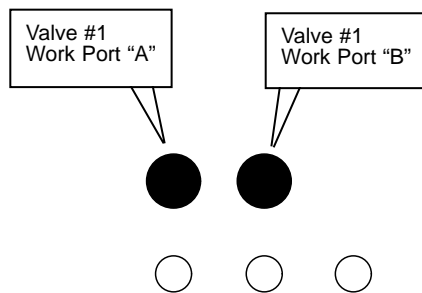
**STICK BOOM CYLINDER FUNCTION
(Main Control Valve To Main Boom Hoselines)**

REF	PART #	QTY		DESCRIPTION	SEE PAGE
1	REF.	1	✓	MAIN CONTROL VALVE	LH-2-2
2	16851-LB	2		CONNECTOR, straight - FF1852T-1210S	
3	18613-LB	1		HOSE ASSEMBLY - 4079-12-120S-120S (<i>Stick boom valve section #1 work port "A" to main boom upper engine-side hoseline</i>)	
4	23040-LB	1		HOSE ASSEMBLY - 4080.5-12-120S-120S (<i>Stick boom valve section #1 work port "B" to main boom upper cab-side hoseline</i>)	
5	REF.	1	✓	MAIN BOOM ASSEMBLY	LB-1-2

✓ See referenced page for component or assembly breakdown.



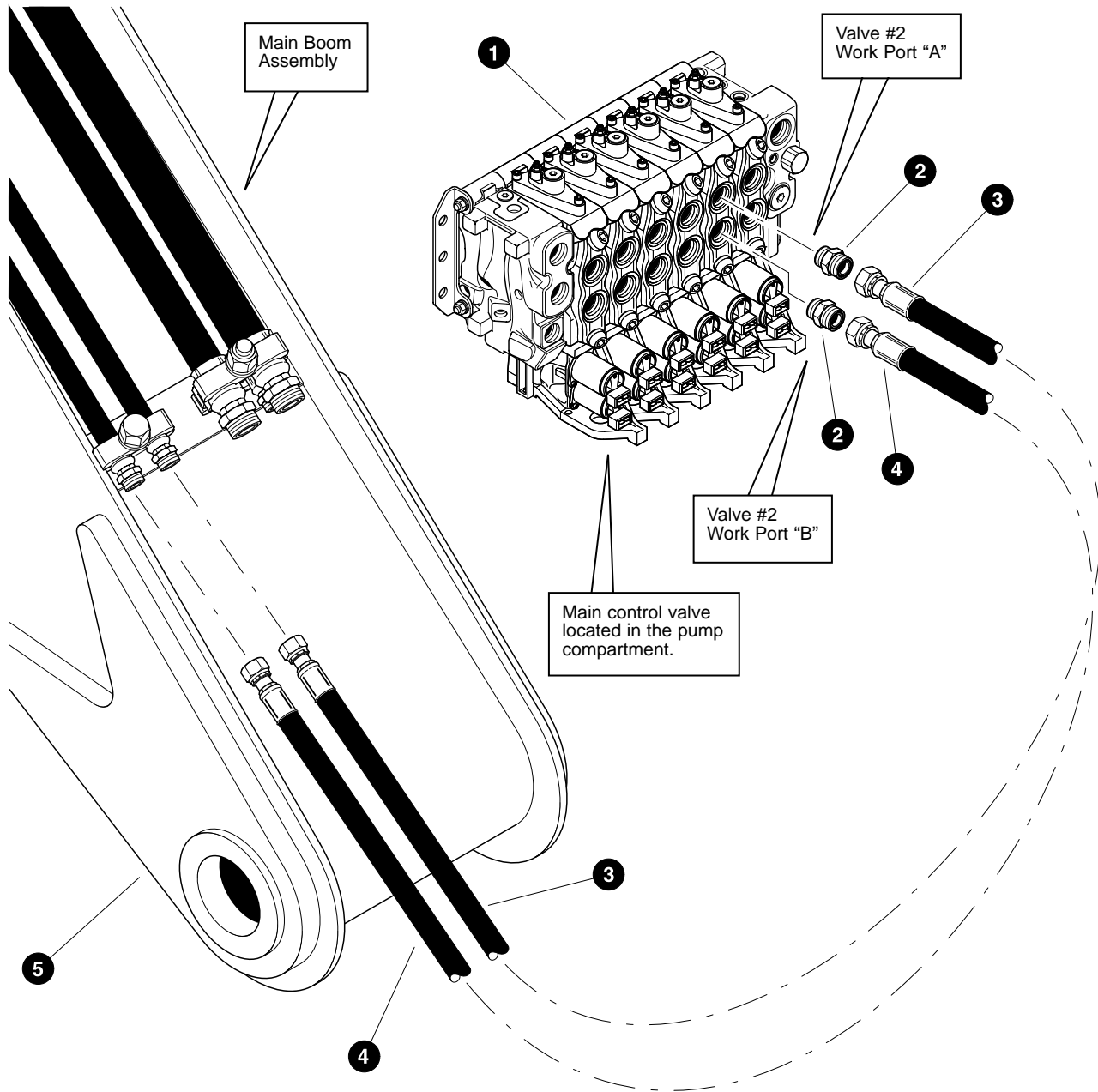
Main boom hoseline connections as viewed from the nose of the main boom looking towards the rear of the machine.



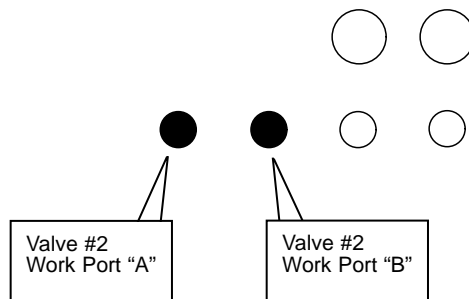
STICK BOOM CYLINDER FUNCTION (Main Boom Hoselines To Stick Boom Cylinder)

REF	PART #	QTY	DESCRIPTION	SEE PAGE
1	21216-LB	1	HOSE ASSEMBLY - 4057-12-120S-120S-W (Main boom upper engine-side hoseline to stick boom cylinder rod port)	
2	23039-LB	1	HOSE ASSEMBLY - 4055-12-120S-120S-W (Main boom upper cab-side hoseline to stick boom cylinder base port)	
3	REF.	1	✓ MAIN BOOM ASSEMBLY	LB-1-2
4	REF.	1	✓ STICK BOOM CYLINDER	LB-2-2
5	15152-LB	2	CONNECTOR, straight - FF1852T-1212S	

✓ See referenced page for component or assembly breakdown.



Main boom hoseline connections as viewed from rear of machine.

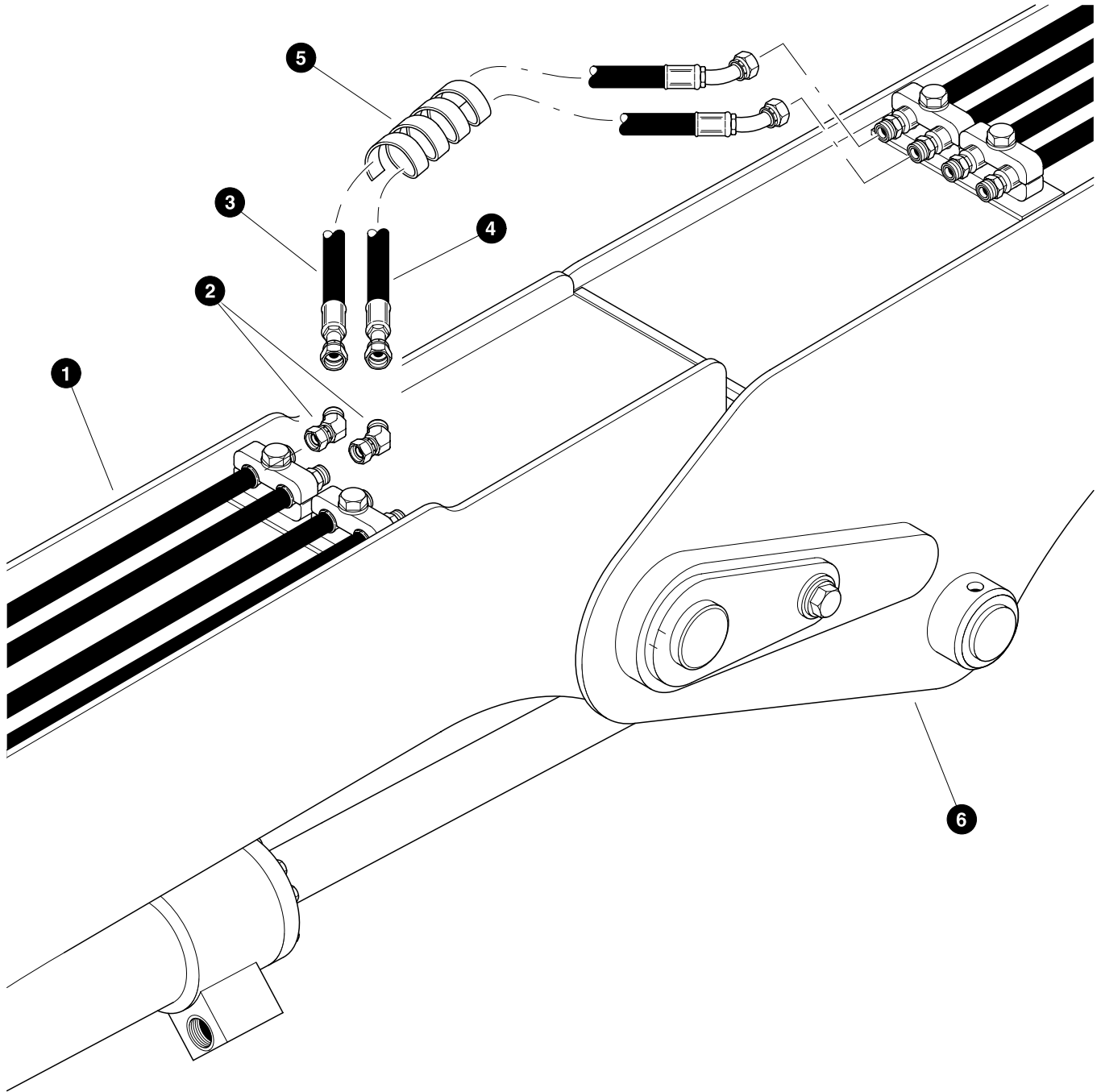


Parts 01703 05/22/2000
25.00

**GRAPPLE OPEN/CLOSE FUNCTION
(Main Control Valve To Main Boom Hoselines)**

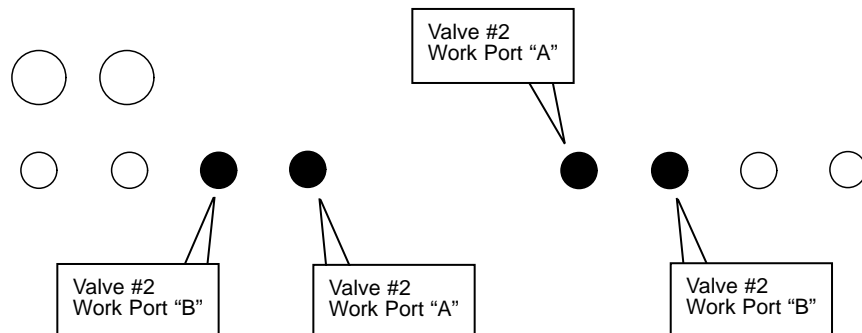
REF	PART #	QTY		DESCRIPTION	SEE PAGE
1	REF.	1	✓	MAIN CONTROL VALVE	LH-2-2
2	15115-LB	2		CONNECTOR, straight - FF1852T-0810S	
3	16816-LB	1		HOSE ASSEMBLY - 4072-08-080S-080S (<i>Grapple valve section #2 work port "A" to main boom lower outer engine-side hoseline</i>)	
4	22926-LB	1		HOSE ASSEMBLY - 4075-08-080S-080S (<i>Grapple valve section #2 work port "B" to main boom lower middle engine-side hoseline</i>)	
5	REF.	1	✓	MAIN BOOM ASSEMBLY	LB-1-2

✓ See referenced page for component or assembly breakdown.



Main boom hoseline connections as viewed from the nose of the main boom looking towards the rear of the machine.

Stick boom hoseline connections as viewed looking forward towards the grapple bucket.



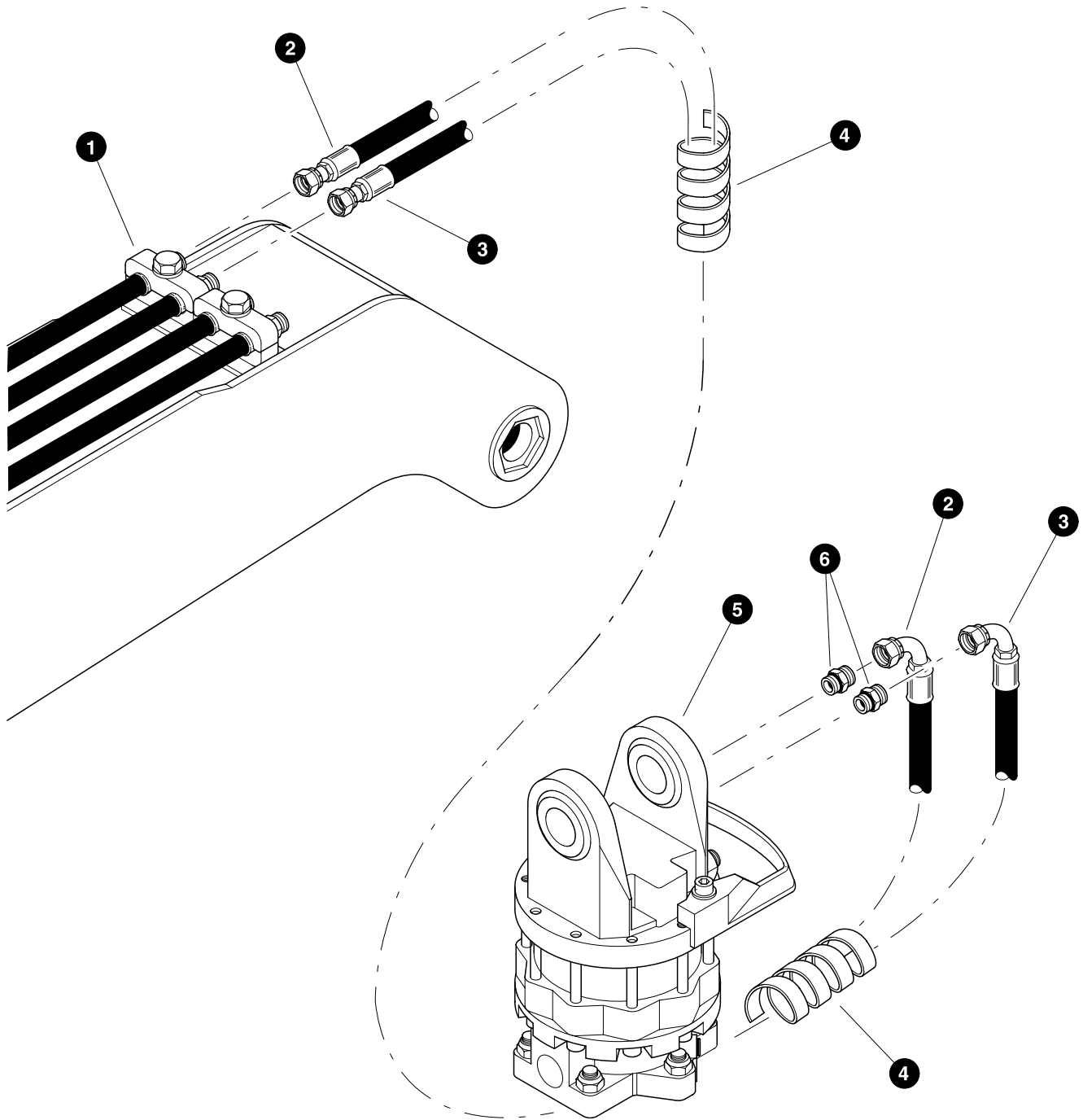
Parts 00536 04/07/98
25.00

GRAPPLE OPEN/CLOSE FUNCTION (Main Boom Hoselines To Stick Boom Hoselines)

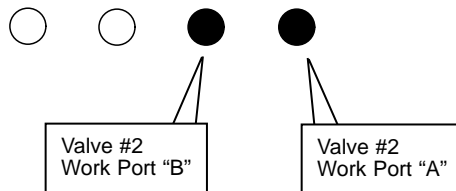
REF	PART #	QTY		DESCRIPTION	SEE PAGE
1	REF.	1	✓	MAIN BOOM ASSEMBLY	LB-1-2
2	20678-LB	2		ELBOW, 45° swivel - FF2133T-0808S	
3	20112-LB	1		HOSE ASSEMBLY - 4045.5-08-080S-0804 (<i>Main boom lower outer engine-side hoseline to stick boom outer engine-side hoseline</i>)	
4	20113-LB	1		HOSE ASSEMBLY - 4047-08-080S-0804 (<i>Main boom lower middle engine-side hoseline to stick boom middle engine-side hoseline</i>)	
5	19677-LB	AR	>∞	PROTECTOR, spiral hose wrap - 1-1/4"	
6	REF.	1	✓	STICK BOOM ASSEMBLY	LB-2-2

✓ See referenced page for component or assembly breakdown.

>∞ Bulk material - order length required in feet or meters.



Stick boom hose connections as viewed from the nose of the stick boom looking towards the rear of the machine.



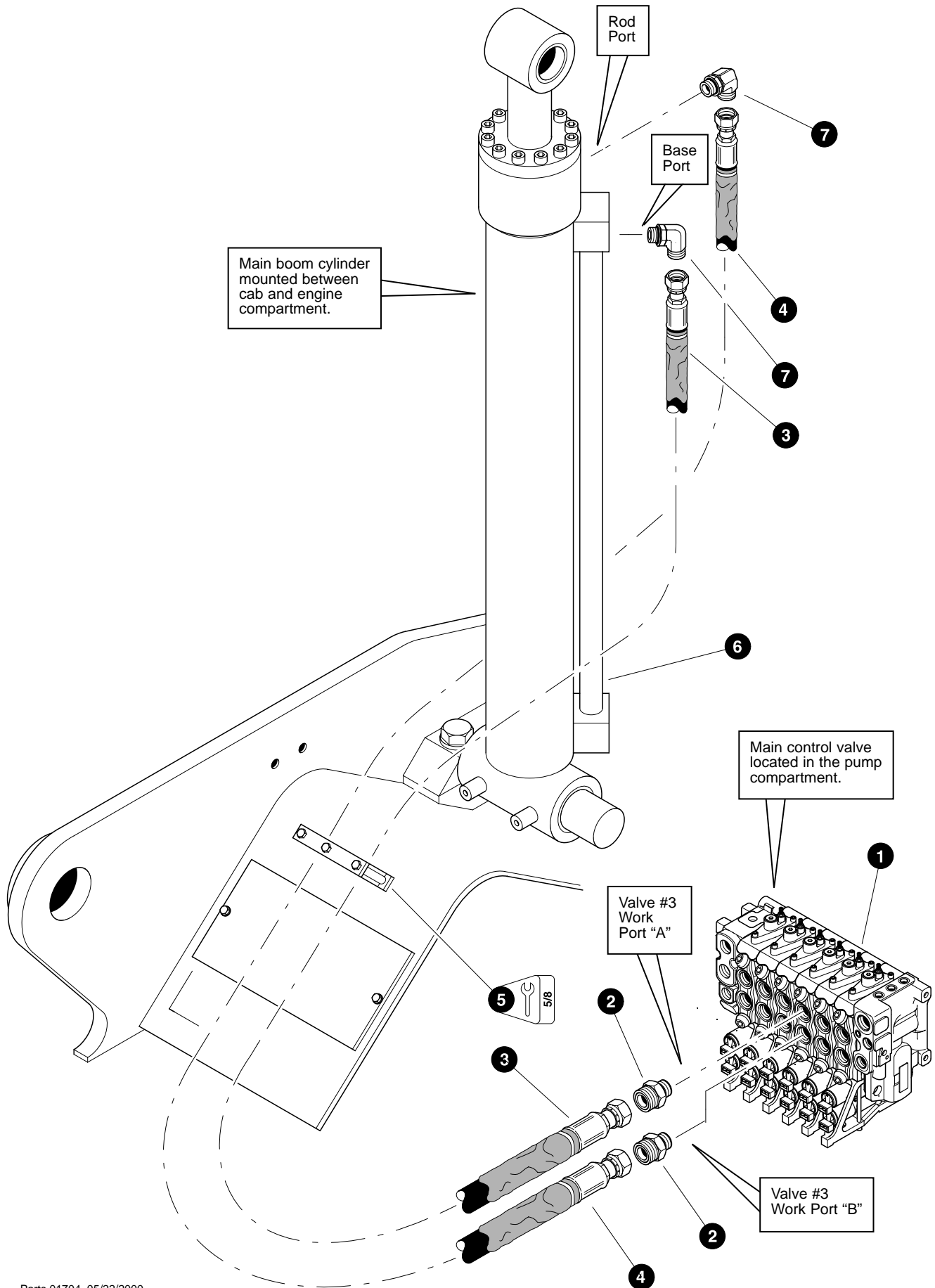
Parts 00537 04/07/98
25.00

GRAPPLE OPEN/CLOSE FUNCTION (Stick Boom Hoselines To Grapple Bucket)

REF	PART #	QTY		DESCRIPTION	SEE PAGE
1	REF.	1	✓	STICK BOOM ASSEMBLY	LB-2-2
2	15268-LB	1		HOSE ASSEMBLY - 4047-08-080S-0809 (<i>Stick boom outer engine-side hoseline to grapple outer engine-side port</i>)	
3	15268-LB	1		HOSE ASSEMBLY - 4047-08-080S-0809 (<i>Stick boom middle engine-side hoseline to grapple middle engine-side port</i>)	
4	19677-LB	AR	>∞	PROTECTOR, spiral hose wrap - 1-1/4"	
5	REF.	1		GRAPPLE BUCKET ROTATOR	
6	19493-LB	2		CONNECTOR, straight - 8-8-F40ML0-S	

✓ See referenced page for component or assembly breakdown.

>∞ Bulk material - order length required in feet or meters.

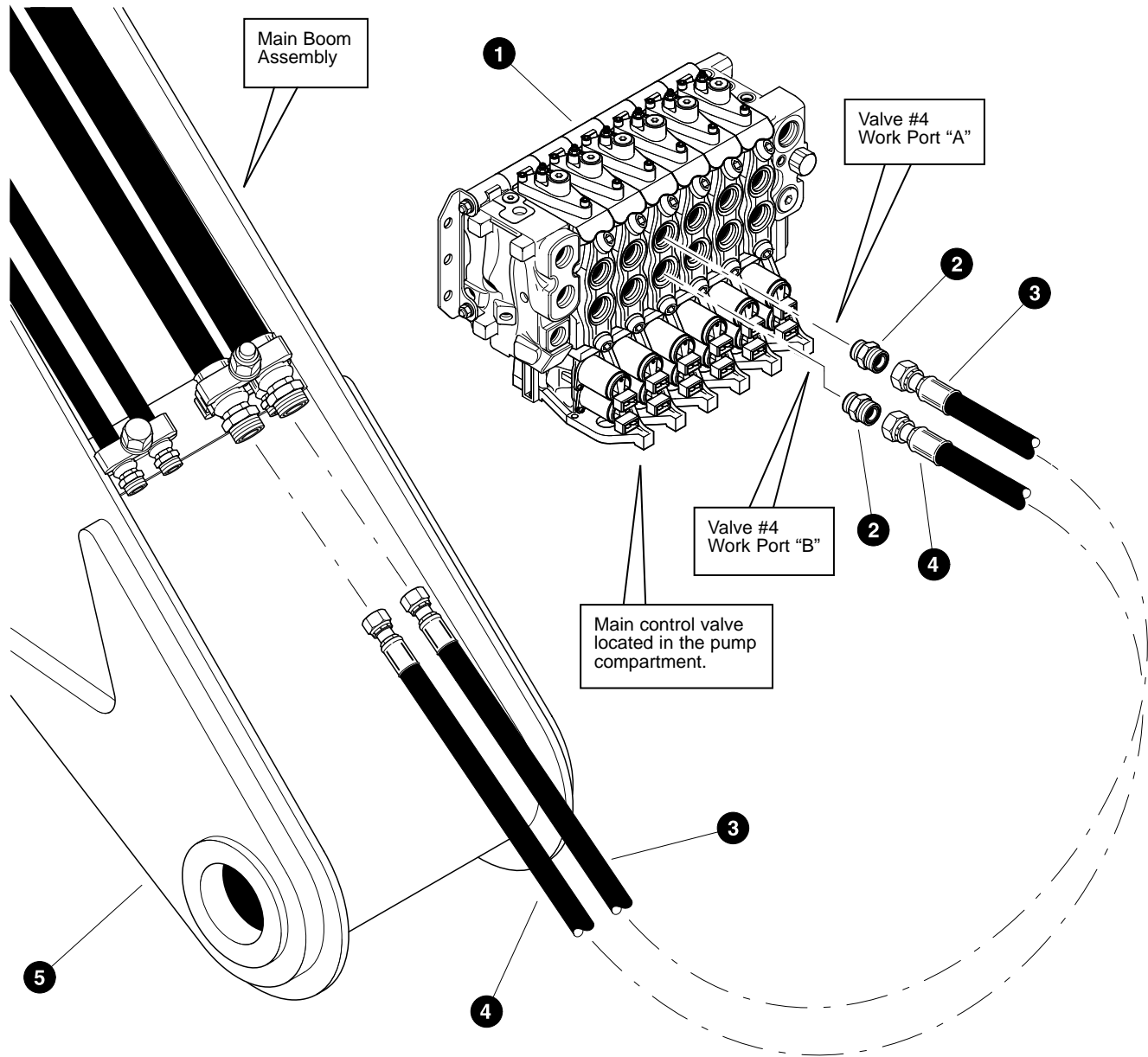


Parts 01704 05/22/2000
18.75

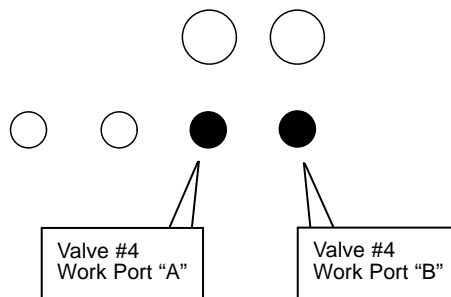
MAIN BOOM CYLINDER FUNCTION (Main Control Valve To Main Boom (Hoist) Cylinder)

REF	PART #	QTY		DESCRIPTION	SEE PAGE
1	REF.	1	✓	MAIN CONTROL VALVE	LH-2-2
2	16851-LB	2		CONNECTOR, straight - FF1852T-1210S	
3	23041-LB	1		HOSE ASSEMBLY - 4128.5-12-120S-120S-W (Main boom valve section #3 work port "A" to main boom cylinder base port)	
4	23042-LB	1		HOSE ASSEMBLY - 4130.5-12-120S-120S-W (Main boom valve section #3 work port "B" to main boom cylinder rod port)	
5	12270-LB	1		CLAMP, vermatic - 1-1/2" x 1-1/2"	
6	REF.	1	✓	MAIN BOOM (HOIST) CYLINDER	LB-4-2
7	17688-LB	2		ELBOW, 90° - FF1868T-1212S	

✓ See referenced page for component or assembly breakdown.



Main boom hoseline connections
as viewed from rear of machine.

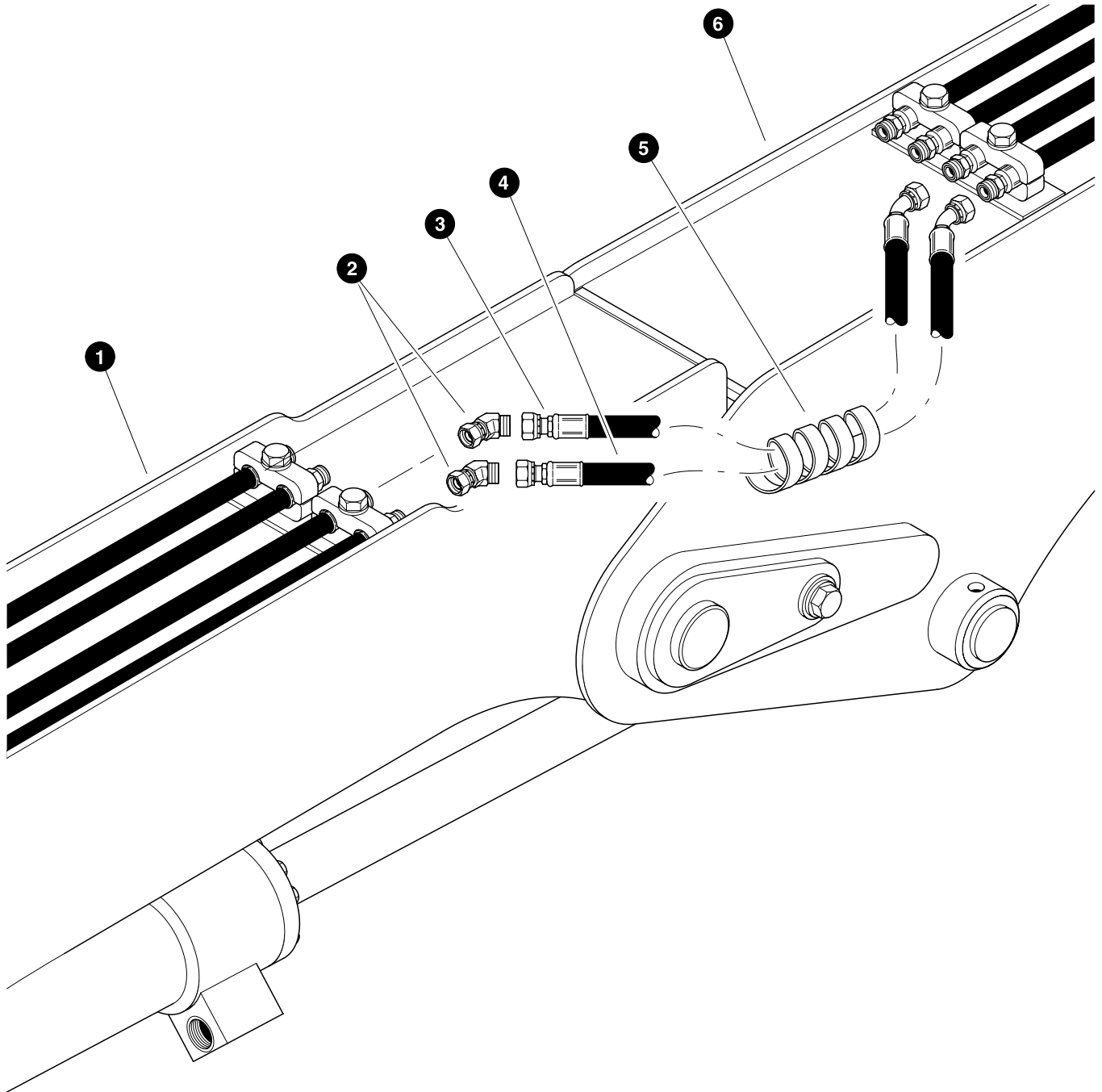


Parts 01705 05/22/2000
25.00

**GRAPPLE ROTATE FUNCTION
(Main Control Valve To Main Boom Hoselines)**

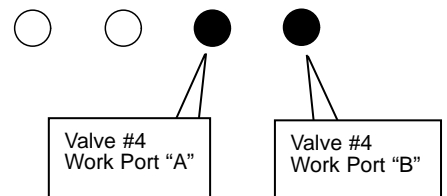
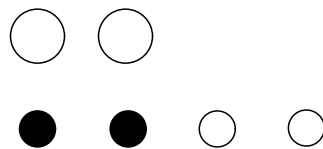
REF	PART #	QTY		DESCRIPTION	SEE PAGE
1	REF.	1	✓	MAIN CONTROL VALVE	LH-2-2
2	15115-LB	2		CONNECTOR, straight - FF1852T-0810S	
3	22992-LB	1		HOSE ASSEMBLY - 4078.5-08-080S-080S (<i>Grapple rotate valve section #4 work port "A" to main boom lower outer cab-side hoseline</i>)	
4	22991-LB	1		HOSE ASSEMBLY - 4074.5-08-080S-080S (<i>Grapple rotate valve section #4 work port "B" to main boom lower middle cab-side hoseline</i>)	
5	REF.	1	✓	MAIN BOOM ASSEMBLY	LB-1-2

✓ See referenced page for component or assembly breakdown.



Main boom hoseline connections as viewed from the nose of the main boom looking towards the rear of the machine.

Stick boom hoseline connections as viewed looking forward towards the grapple bucket.



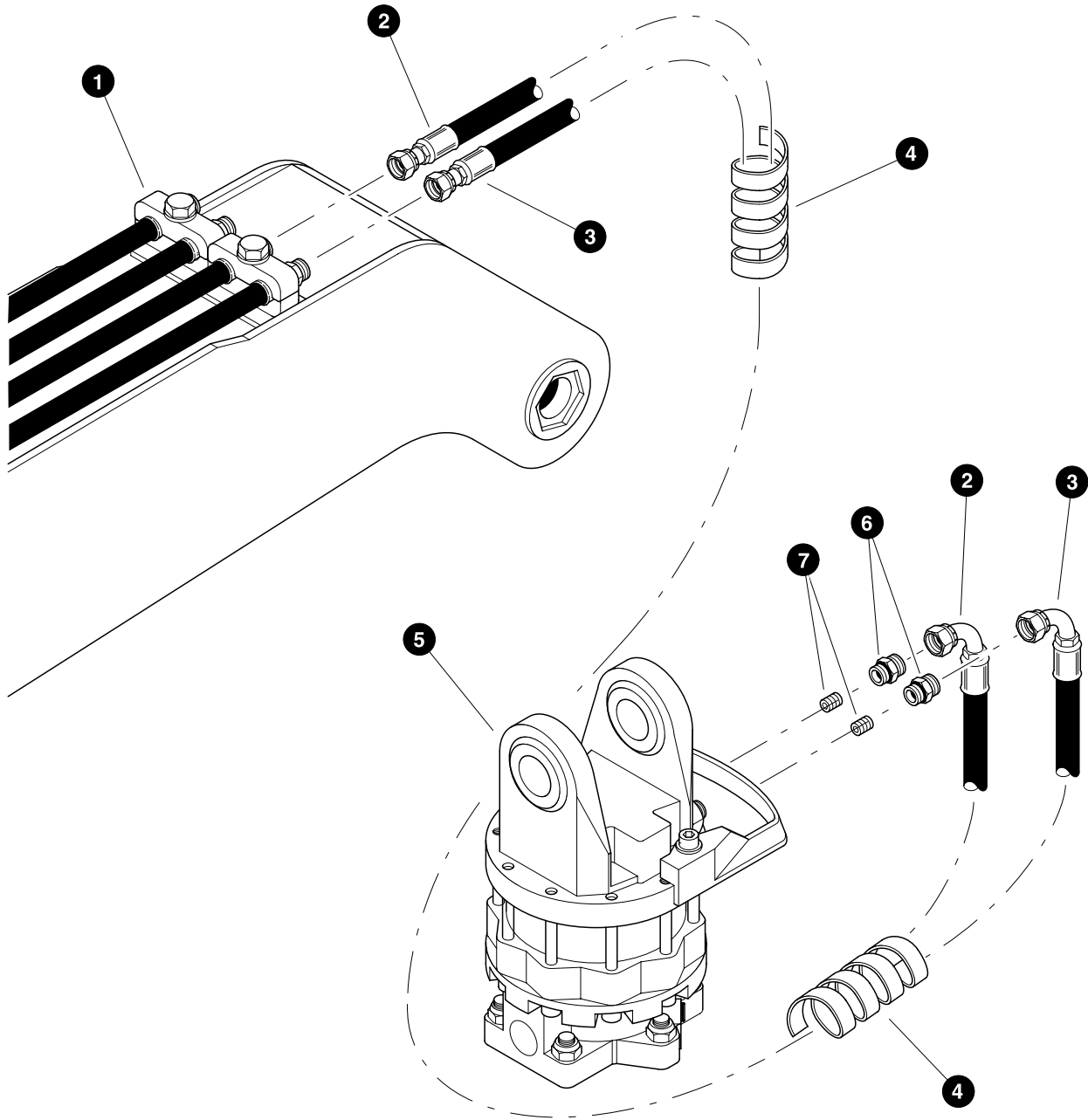
Parts 00539 04/07/98
25.00

GRAPPLE ROTATE FUNCTION (Main Boom Hoselines To Stick Boom Hoselines)

REF	PART #	QTY	DESCRIPTION	SEE PAGE
1	REF.	1	✓ MAIN BOOM ASSEMBLY	LB-1-2
2	20678-LB	2	ELBOW, 45° swivel - FF2133T-0808S	
3	20113-LB	1	HOSE ASSEMBLY - 4047-08-080S-0804 (<i>Main boom lower middle cab-side hoseline to stick boom middle cab-side hoseline</i>)	
4	20112-LB	1	HOSE ASSEMBLY - 4045.5-08-080S-0804 (<i>Main boom lower outer cab-side hoseline to stick boom outer cab-side hoseline</i>)	
5	19677-LB	AR	>∞ PROTECTOR, spiral hose wrap - 1-1/4"	
6	REF.	1	✓ STICK BOOM ASSEMBLY	LB-2-2

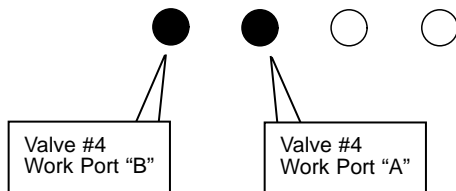
✓ See referenced page for component or assembly breakdown.

>∞ Bulk material - order length required in feet or meters.



Stick boom hose connections as viewed from the nose of the stick boom looking towards the rear of the machine.

Parts 00540 04/07/98
25.00

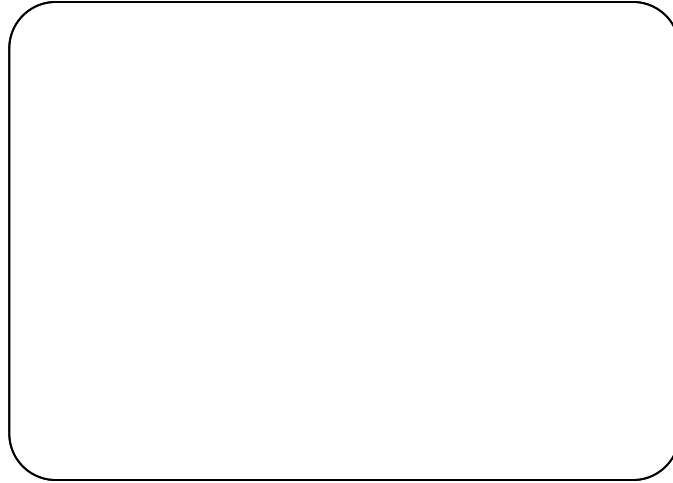
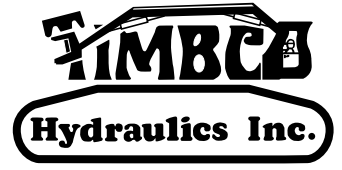


GRAPPLE ROTATE FUNCTION (Stick Boom Hoselines To Grapple Bucket)

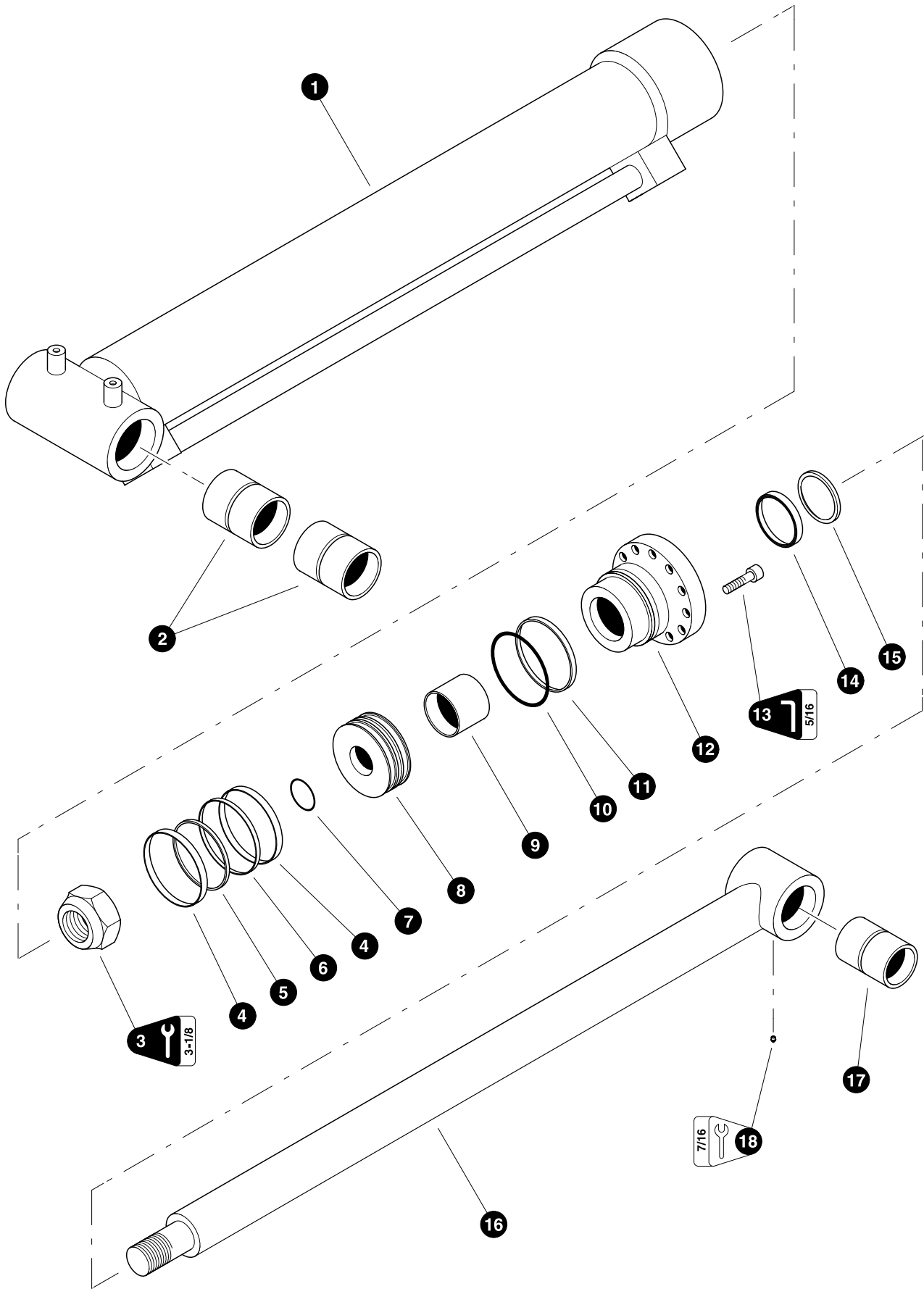
REF	PART #	QTY		DESCRIPTION	SEE PAGE
1	REF.	1	✓	STICK BOOM ASSEMBLY	LB-2-2
2	15268-LB	1		HOSE ASSEMBLY - 4047-08-080S-0809 (<i>Stick boom outer engine-side hoseline to grapple outer engine-side port</i>)	
3	15268-LB	1		HOSE ASSEMBLY - 4047-08-080S-0809 (<i>Stick boom middle engine-side hoseline to grapple middle engine-side port</i>)	
4	19677-LB	AR	>∞	PROTECTOR, spiral hose wrap - 1-1/4"	
5	REF.	1		GRAPPLE BUCKET ROTATOR	
6	19492-LB	2	☐	CONNECTOR, straight w/orifice - 8-8-F40ML0-S	
7	20119-LB	2		ORIFICE	

- ✓ See referenced page for component or assembly breakdown.
- >∞ Bulk material - order length required in feet or meters.
- ☐ Kit or Assembly - includes all items indented underneath.

Section LB-4



Loader Booms - Cylinders

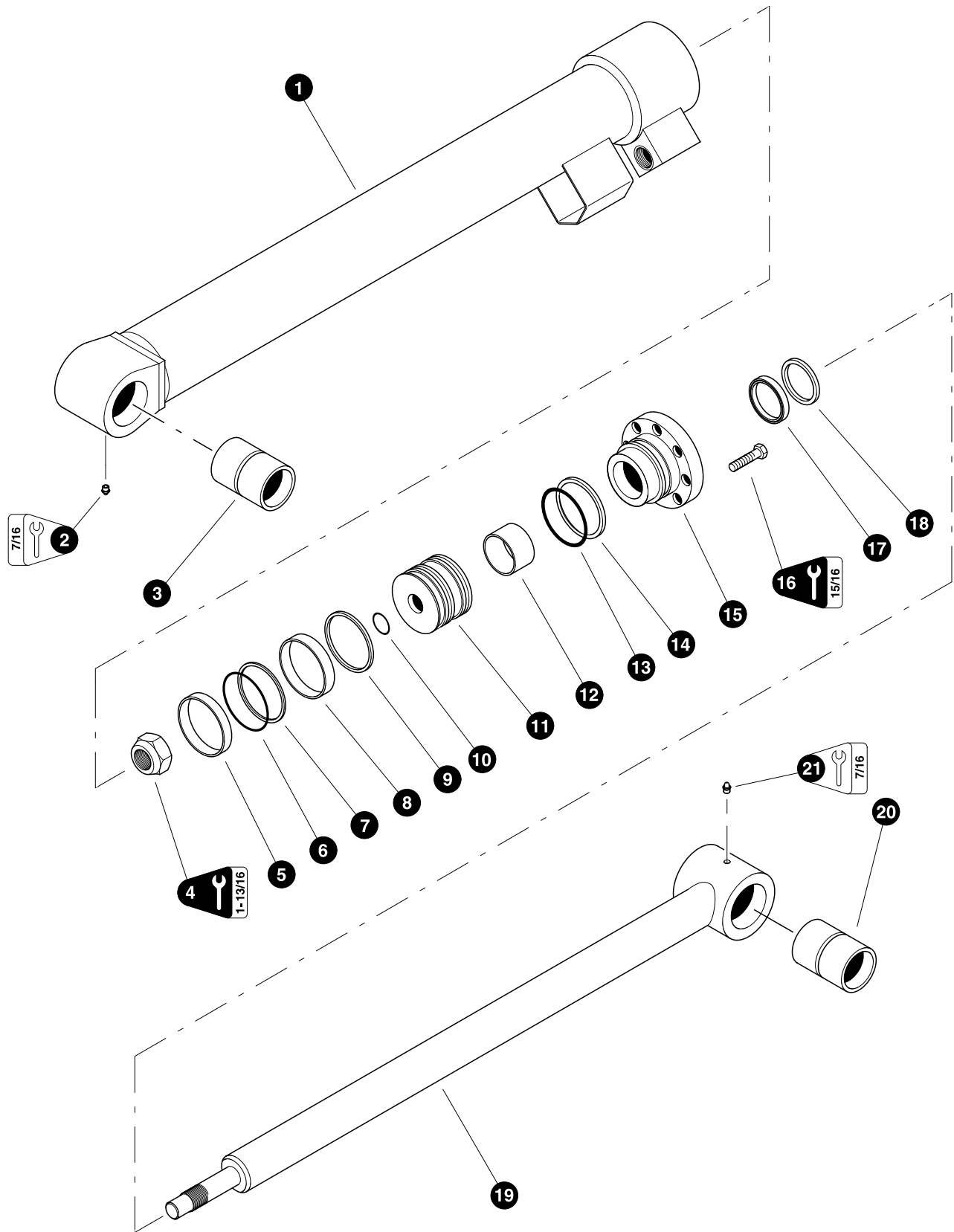


00264 09/07/97
18.75

MAIN BOOM (HOIST) CYLINDER

REF	PART #	QTY	DESCRIPTION	SEE PAGE
-	19744-LB	1	<input type="checkbox"/> MAIN BOOM CYLINDER ASSEMBLY	
1	19225-LB	1	<input type="checkbox"/> BARREL ASSEMBLY	
2	11706-LB	2	BUSHING - 3" x 4-1/4"	
3	15287-LB	1	NUT, cylinder rod - 2" NF (<i>Torque to 2700 +/- 200 ft.lbs. (3600 +/- 265 Nm)</i>)	
4	NSS	2	★ RING, piston wear	
5	NSS	1	★ RING, piston loader	
6	NSS	1	★ RING, piston chem-cast	
7	NSS	1	★ O-RING, piston	
8	19742-LB	1	PISTON	
9	NSS	1	★ RING, rod bearing wear	
10	NSS	1	★ O-RING, rod bearing	
11	NSS	1	★ RING, rod bearing back-up	
12	19223-LB	1	BEARING, rod	
13	19912-LB	12	BOLT, allen head - 5/8" x 2-1/4" (<i>Torque to 175 ft.lbs (233 Nm)</i>)	
14	NSS	1	★ U-CUP, rod bearing	
15	NSS	1	★ WIPER, rod	
16	19222-LB	1	<input type="checkbox"/> ROD ASSEMBLY	
17	11704-LB	1	BUSHING - 2-1/2" x 4-1/4"	
18	10704-LB	1	FITTING, straight grease - 1/8" pipe thread	
-	19748-LB	1	KIT, seal repair - main boom cylinder	

- Kit or Assembly - includes all items indented underneath.
 ★ Included in seal repair kit Part # 19748-LB.



01706 05/23/2000
18.75

STICK BOOM (JIB) CYLINDER (With 1-1/4" Piston Stem)(See Note Below)

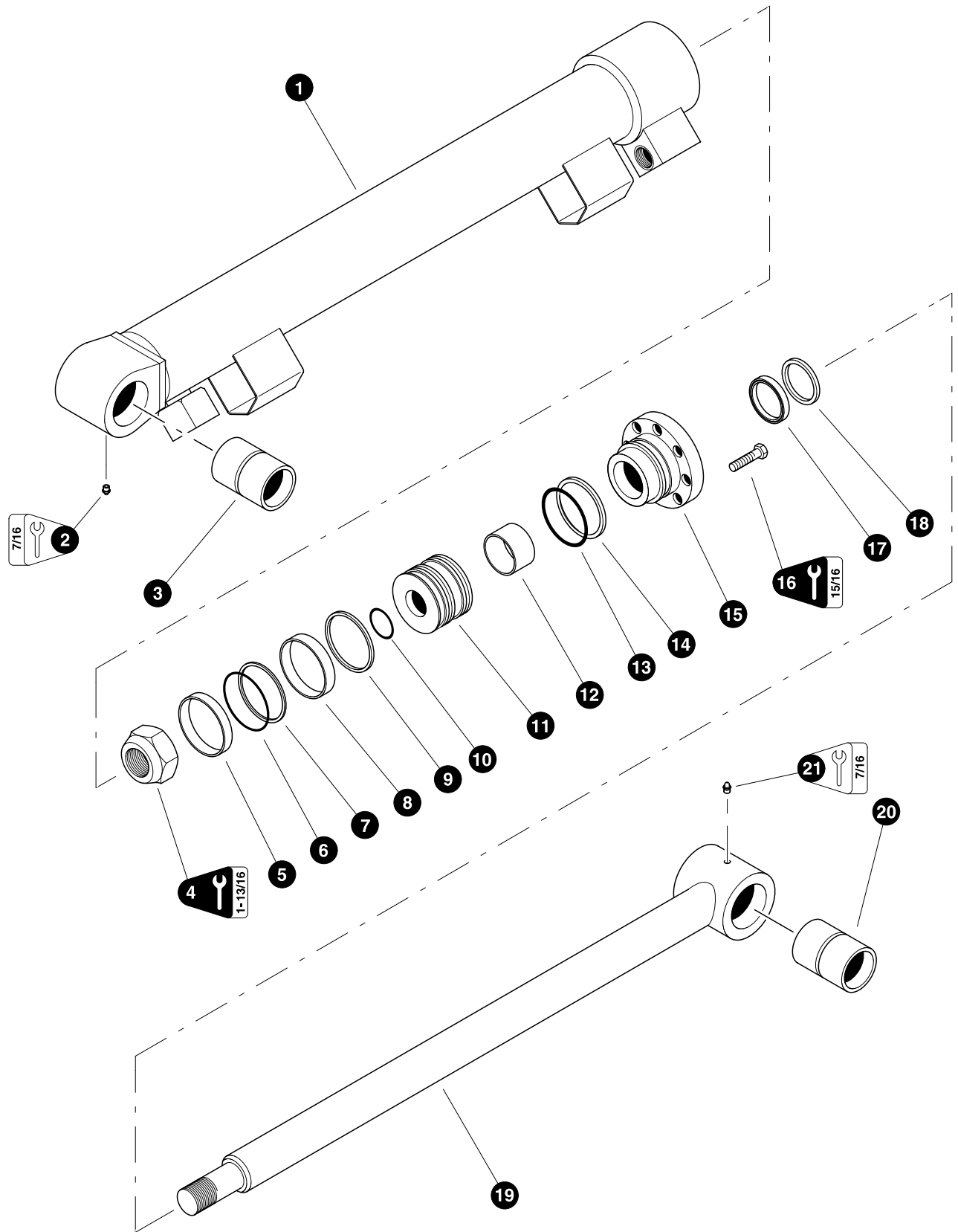
(Used on machines PDN# 149FWD and below)

REF	PART #	QTY		DESCRIPTION	SEE PAGE
-	20860-LB	1	<input type="checkbox"/>	STICK BOOM CYLINDER ASSEMBLY	
1	20864-LB	1	<input type="checkbox"/>	BARREL ASSEMBLY	
2	10704-LB	1		FITTING, straight grease - 1/8" pipe thread	
3	11704-LB	1		BUSHING - 2-1/2" x 4-1/4"	
4	19232-LB	1		NUT, cylinder rod - 1-1/4" (Torque to 885 +/- 60 ft.lbs. (1175 +/- 80 Nm))	
5	NSS	1	★	RING, piston wear	
6	NSS	1	★	RING, piston loader	
7	NSS	1	★	RING, piston chem-cast	
8	NSS	1	★	RING, piston wear	
9	NSS	1	★	RING, piston seal	
10	NSS	1	★	O-RING, piston	
11	19743-LB	1		PISTON	
12	NSS	1	★	RING, rod bearing wear	
13	NSS	1	★	O-RING, rod bearing	
14	NSS	1	★	RING, rod bearing back-up	
15	19230-LB	1		BEARING, rod	
16	15681-LB	8		BOLT - 5/8" x 2-1/4" (Torque to 175 ft.lbs (233 Nm))	
17	NSS	1	★	U-CUP, rod bearing	
18	NSS	1	★	WIPER, rod	
19	19229-LB	1	<input type="checkbox"/>	ROD ASSEMBLY	
20	11704-LB	1		BUSHING - 2-1/2" x 4-1/4"	
21	10704-LB	1		FITTING, straight grease - 1/8" pipe thread	
-	19749-LB	1		KIT, seal repair - stick boom cylinder	

- Kit or Assembly - includes all items indented underneath.
- ★ Included in seal repair kit Part # 19479-LB.

NOTE: There were two types of stick cylinders between August 2000 and January 2001. Stick Cylinder PN# 20860-LB had a 1-1/4" piston stem. Stick cylinder PN# 23303-LB is a newer design having a 1-3/4" piston stem. The cylinders can be identified externally by two means:

- (1) The manufacturer's stamped code located near the base end port of the cylinder. PN# 20860-LB cylinders are stamped 140702B, PN# 23303-LB cylinders are stamped 140861B.
- (2) The cylinder's rod end port block. PN# 20860-LB cylinders have one port. PN# 23303-LB cylinders have two ports to allow the cylinder to be used as a tool tilt cylinder in cut-skid applications.



01706 05/23/2000
18.75

STICK BOOM (JIB) CYLINDER (With 1-3/4" Piston Stem)(See Note Below)

(Used on machines PDN# 150FWD and above)

REF	PART #	QTY		DESCRIPTION	SEE PAGE
-	23303-LB	1	<input type="checkbox"/>	STICK BOOM CYLINDER ASSEMBLY	
1	23442-LB	1	<input type="checkbox"/>	BARREL ASSEMBLY	
2	10704-LB	1		FITTING, straight grease - 1/8" pipe thread	
3	11704-LB	1		BUSHING - 2-1/2" x 4-1/4"	
4	15914-LB	1		NUT, cylinder rod - 1-3/4" (Torque to 2400+/- 150 ft.lbs. (3200+/- 200 Nm))	
5	NSS	1	★	RING, piston wear	
6	NSS	1	★	RING, piston loader	
7	NSS	1	★	RING, piston chem-cast	
8	NSS	1	★	RING, piston wear	
9	NSS	1	★	RING, piston seal	
10	NSS	1	★	O-RING, piston	
11	23305-LB	1		PISTON	
12	NSS	1	★	RING, rod bearing wear	
13	NSS	1	★	O-RING, rod bearing	
14	NSS	1	★	RING, rod bearing back-up	
15	19230-LB	1		BEARING, rod	
16	15681-LB	8		BOLT - 5/8" x 2-1/4" (Torque to 175 ft.lbs (233 Nm))	
17	NSS	1	★	U-CUP, rod bearing	
18	NSS	1	★	WIPER, rod	
19	23304-LB	1	<input type="checkbox"/>	ROD ASSEMBLY	
20	11704-LB	1		BUSHING - 2-1/2" x 4-1/4"	
21	10704-LB	1		FITTING, straight grease - 1/8" pipe thread	
-	23306-LB	1		KIT, seal repair - stick boom cylinder	

- Kit or Assembly - includes all items indented underneath.
- ★ Included in seal repair kit Part # 23306-LB.

NOTE: There were two types of stick cylinders between August 2000 and January 2001. Stick Cylinder PN# 20860-LB had a 1-1/4" piston stem. Stick cylinder PN# 23303-LB is a newer design having a 1-3/4" piston stem. The cylinders can be identified externally by two means:

- (1) The manufacturer's stamped code located near the base end port of the cylinder. PN# 20860-LB cylinders are stamped 140702B, PN# 23303-LB cylinders are stamped 140861B.
- (2) The cylinder's rod end port block. PN# 20860-LB cylinders have one port. PN# 23303-LB cylinders have two ports to allow the cylinder to be used as a tool tilt cylinder in cut-skid applications.