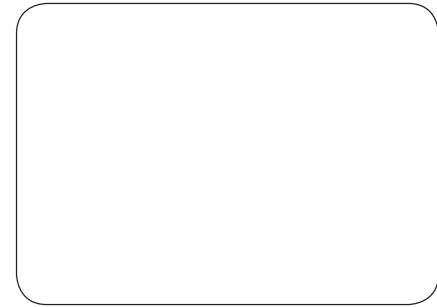


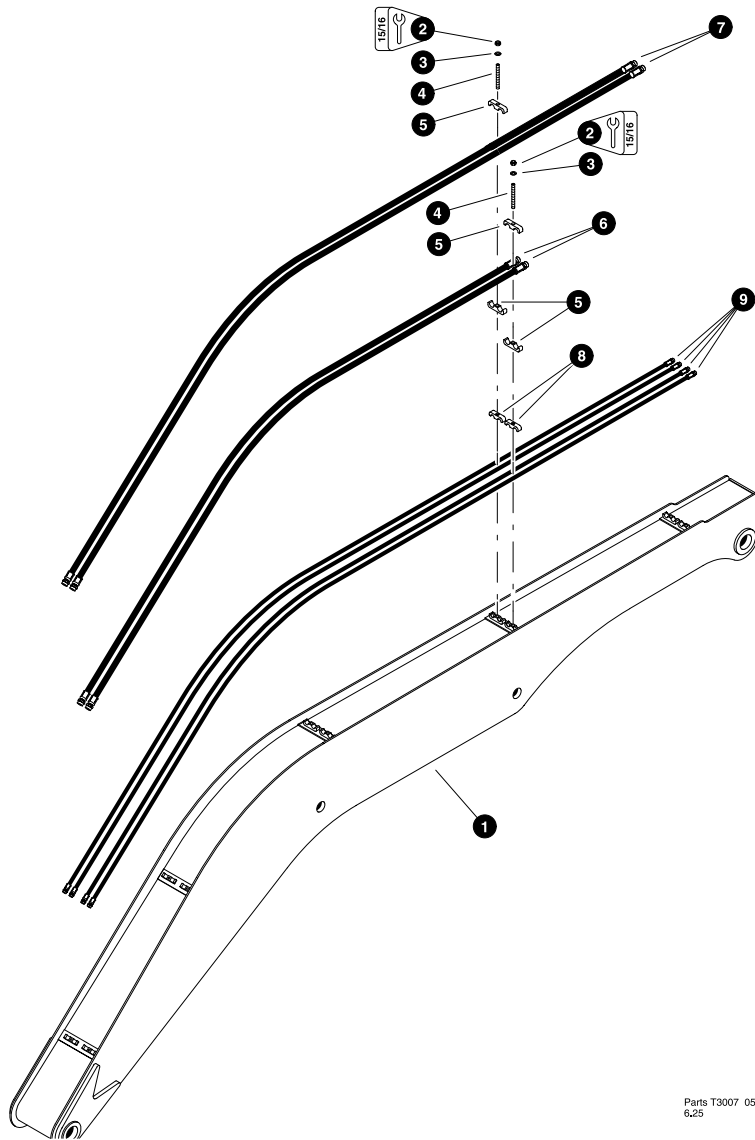
***Section LB-1***

---



***Loader Booms -  
Main Boom***



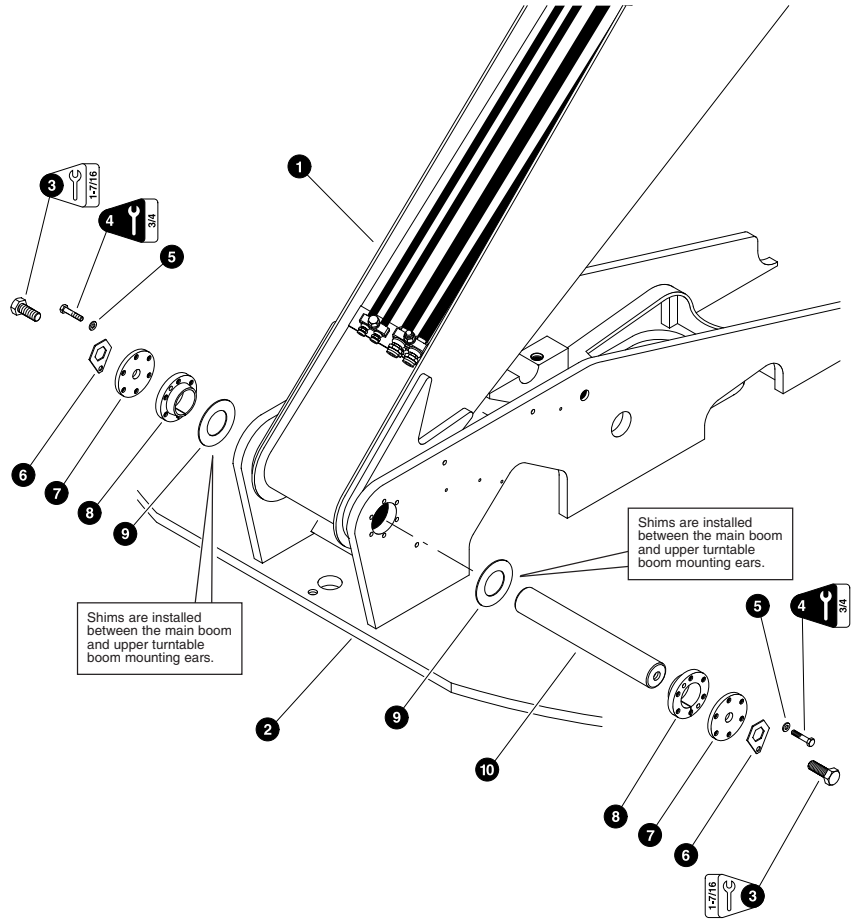


Parts T3007 05/24/04  
6.25

### MAIN BOOM COMPONENTS (WITH OPTIONAL SQUIRT BOOM LINES)

REF	PART #	QTY	DESCRIPTION	SEE SECTION
1	85030-LB	1	<input type="checkbox"/> WELDMENT, main boom (Heavy Duty)	
2	15563-LB	9	NUT, nylock - 5/8"	
3	10771-LB	10	WASHER, SAE flat - 5/8"	
4	15672-LB	9	STUD - 5/8" x 5-1/4"	
5	19324-LB	18	CLAMP, tubeline - 3/4" x 3/4"	
6	50764-LB	2	HOSE ASSEMBLY - 4154-12-120MS-120MS	
7	50812-LB	2	HOSE ASSEMBLY - 4208-12-120MS-120MS	
8	15272-LB	10	CLAMP, tubeline - 1/2" x 1/2"	
9	50763-LB	4	HOSE ASSEMBLY - 4207-08-080MS-080MS	

Kit or Assembly - includes all items indented underneath.

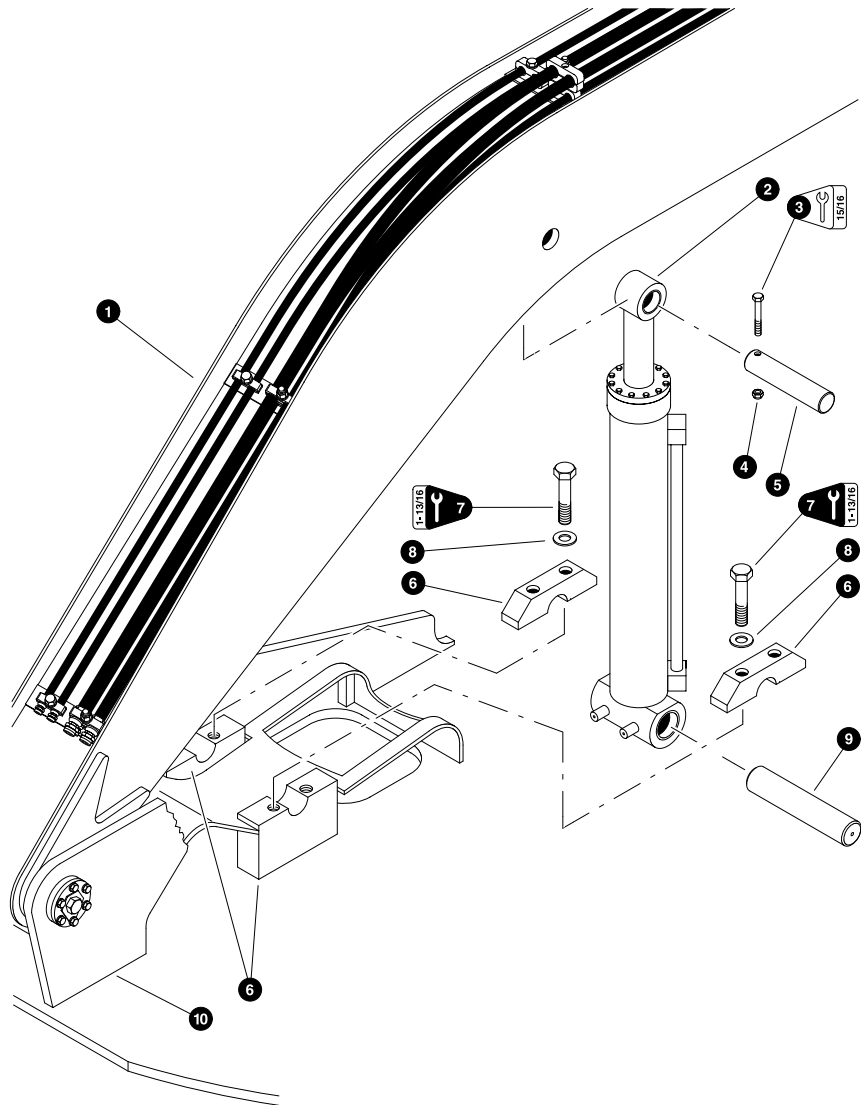


Parts 00524 04/06/98  
12.50

### MAIN BOOM INSTALLATION

REF	PART #	QTY	DESCRIPTION	SEE SECTION
1	REF.	1	MAIN BOOM ASSEMBLY	LB-1-2
2	REF.	1	UPPER TURNABLE WELDMENT	
3	15552-LB	2	BOLT - 1" x 2-1/2"	
4	15565-LB	12	BOLT - 1/2" x 2-1/2" (Torque to 100 ft.lbs. (135 Nm))	
5	15534-LB	12	WASHER, SAE flat - 1/2"	
6	12116-LB	2	LOCK, center tapered hub bolt	
7	12115-LB	2	CAP, tapered hub	
8	12352-LB	2	HUB, tapered - 1-1/4" plate	
9	19150-LB	AR	SHIM - 1/4" thick	
	16633-LB	AR	SHIM - 7 gauge	
	16637-LB	AR	SHIM - 10 gauge	
	16638-LB	AR	SHIM - 14 gauge	
10	18050-LB	1	PIN, chromed - 3" x 20"	

See referenced page for component or assembly breakdown.



Parts 00525 04/06/98  
12.50

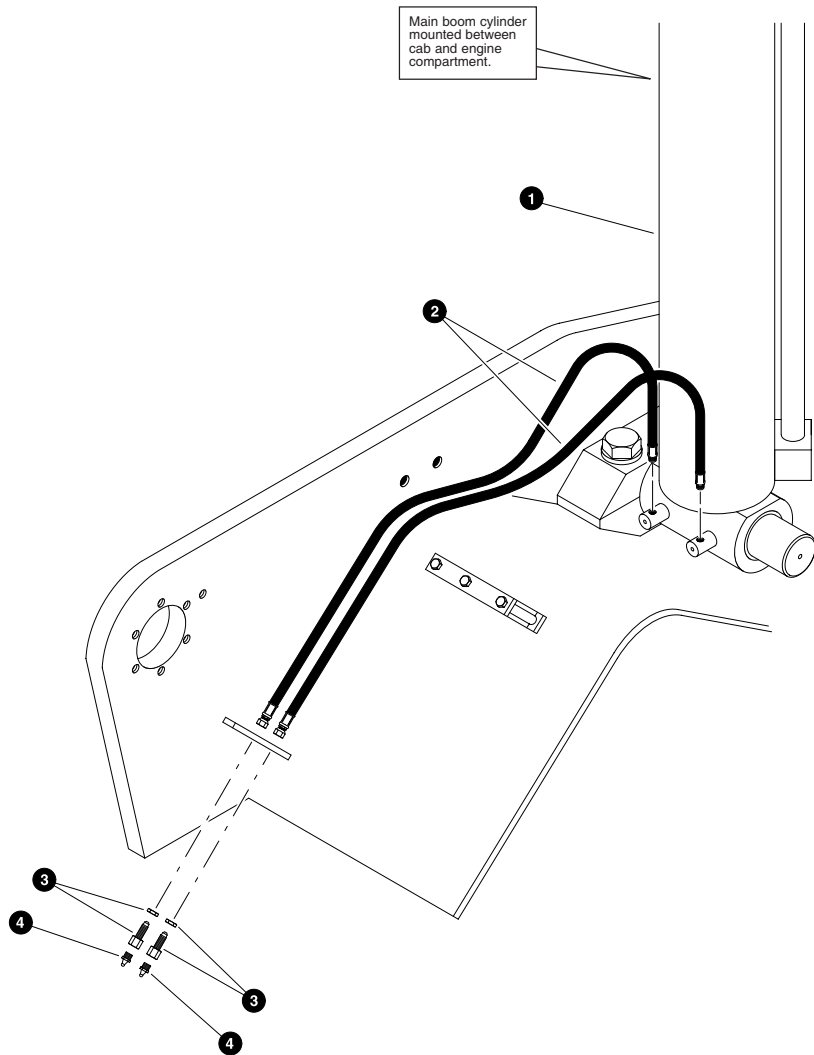
### MAIN BOOM (HOIST) CYLINDER INSTALLATION

REF	PART #	QTY	DESCRIPTION	SEE SECTION
1	REF.	1	☐ MAIN BOOM ASSEMBLY	LB-1
2	REF.	1	☐ MAIN BOOM (HOIST) CYLINDER	LB-4
3	10838-LB	1	BOLT - 5/8" x 5"	
4	15563-LB	1	NUT, nylock - 5/8"	
5	18895-LB	1	PIN, chromed - 2-1/2" x 13-7/8"	
6	12351-LB	2	☐ WELDMENT, pin retainer block - 3" pin (See note below)	
	12066-LB	1	BLOCK, bottom	
	12067-LB	1	BLOCK, top	
7	15543-LB	2	BOLT - 1-1/4" x 5-1/2" (Torque to 1500 ft.lbs. (2000 Nm))	
8	15544-LB	2	WASHER, flat - 1-1/4"	
9	18053-LB	1	PIN, chromed - 3" x 14-1/2"	
10	REF.	1	☐ UPPER TURNTABLE WELDMENT	

- ☐ See referenced page for component or assembly breakdown.
- ☐ Kit or Assembly - includes all items indented underneath.

**Note:**

The pin retainer block weldments are machined assembled, therefore, the top (PN# 12067) and bottom (PN# 12066) blocks are a matched set. TimberPro recommends installing a complete block weldment if either the top or bottom block must be replaced. This will insure the two halves mate properly to retain the pin.



Parts 01884 11/07/2000  
25.00

### MAIN BOOM (HOIST) CYLINDER GREASE LINES

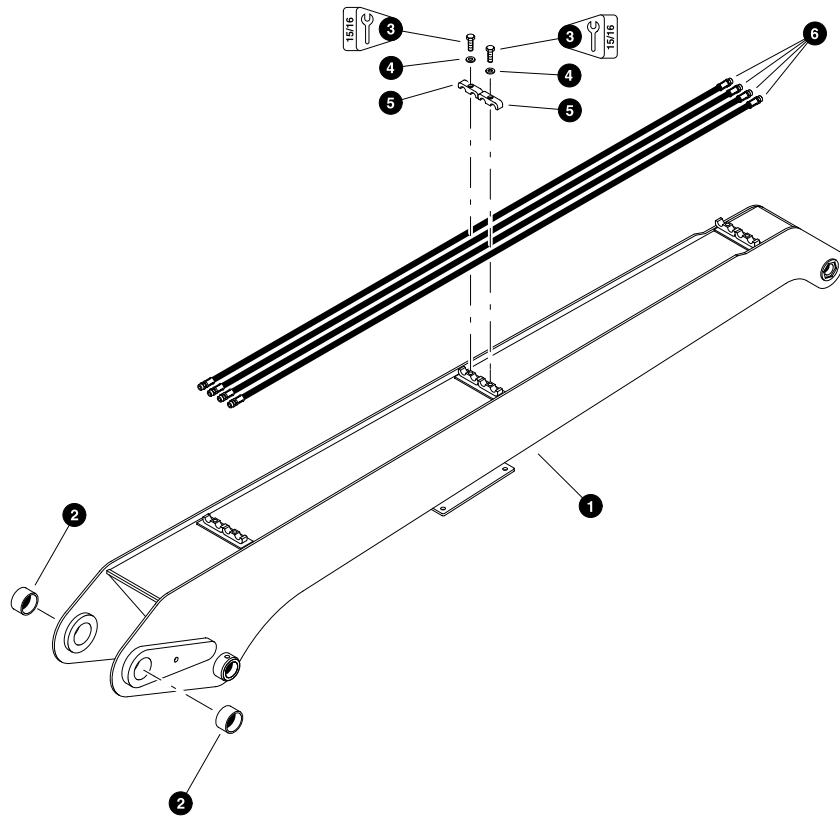
REF	PART #	QTY	DESCRIPTION	SEE SECTION
1	REF.	1	MAIN BOOM (HOIST) CYLINDER	LB-4
2	16980-LB	2	HOSE ASSEMBLY - 2044-04-04PS-04JS (Grease line from rear of upper turntable to base of main boom cylinder)	
3	15658-LB	2	CONNECTOR, straight bulkhead - 2239-2-4S	
4	10704-LB	2	FITTING, straight grease - 1/8" pipe thread	

See referenced page for component or assembly breakdown.



?Tt gHcVtG(WZ#) %S%##&

?bTWk5bb' f ZFgV^5bb'



Parts 00526 04/06/98  
9.375

G9^+##ZG5 )%#CTef ~@bWh X75Z \$##%

LB-2-1

?bTWk5bb' f ZFgV^5bb'

?Tt gHcVtG(WZ#) %S%##&

### STICK BOOM COMPONENTS

REF	PART #	QTY	DESCRIPTION	SEE SECTION
1	85000-LB	1	<input type="checkbox"/> WELDMENT, stick boom	
2	20048-LB	2	BUSHING - 3" x 2"	
3	15526-LB	6	BOLT - 5/8" x 2"	
4	10771-LB	6	WASHER, SAE flat - 5/8"	
5	15272-LB	6	CLAMP, tubeline - 1/2" x 1/2"	
6	50762-LB	4	HOSE ASSEMBLY - 4108-08-08OMS-08OMS	

Kit or Assembly - includes all items indented underneath.

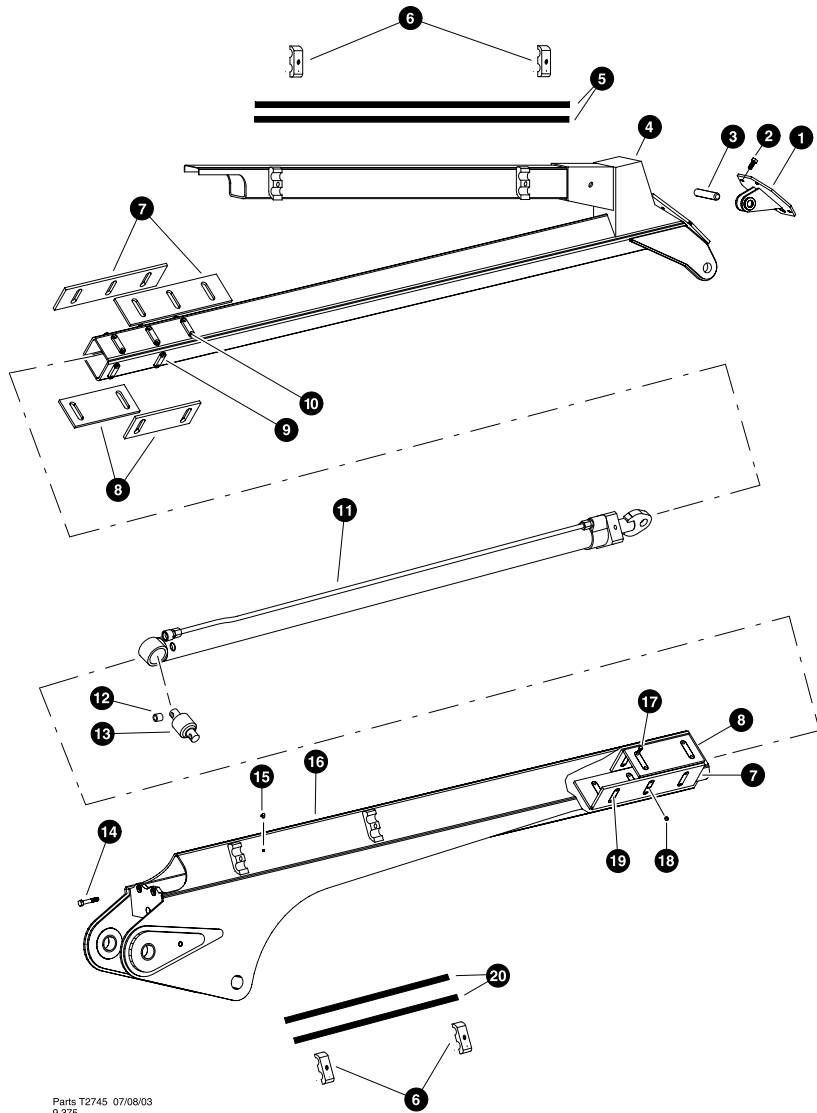
LB-2-2

G9^+##ZG5 )%#CTef ~@bWh X75Z \$##%



?Tt gHcVtG(WZ#) %\$%##&

?bTWk5bb' f'ZFGV^5bb'



Parts T2745 07/08/03  
9,375

G9+##ZG5 )%#CTef ~@bWh X75Z \$\$\$%

LB-2-3

?bTWk5bb' f'ZFGV^5bb'

?Tt gHcVtG(WZ#) %\$%##&

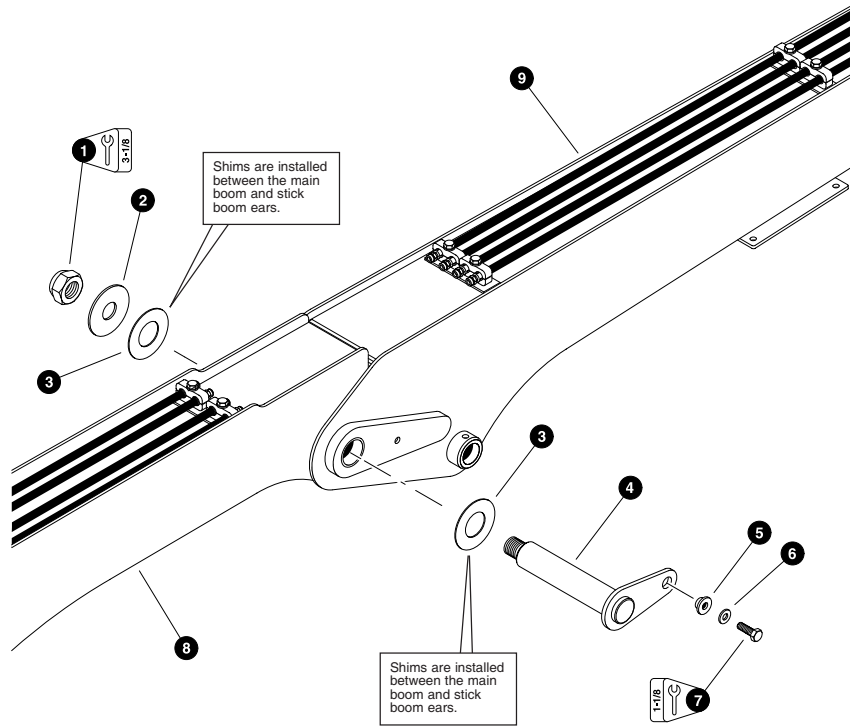
### SQUIRT BOOM COMPONENTS

REF	PART #	QTY	DESCRIPTION	SEE SECTION
	23896-LB	1	<input type="checkbox"/> BOOM, SQUIRT 6'	
1	---	1	CYLINDER ANCHOR (XB2017)	
2	15502-LB	4	BOLT, 5/8 X 1.5	
3	---	1	PIN (XB2015)	
4	---	1	SLIDE TUBE	
5	19679-LB	4	TUBELINE, 1/2" X 48"	
6	15272-LB	8	CLAMP, saddle 1/2 x 1/2	
7	---	4	WEAR PAD, long (XB3006)	
8	---	4	WEAR PAD, short (XB3005)	
9	---	10	PUCKS, retaining - countersunk (XB3021)	
10	---	20	SCREWS, 3/8 X 3/4 brass (XB5001)	
11	REF	1	CYLINDER, squirt boom 6' .....	LB-4
12	---	2	SPACER, squirt cylinder mount	
13	---	1	BUSHING, squirt cyl rear (HEN44695)	
14	10719-LB	2	BOLT, 5/8 X 4"	
15	15682-LB	2	FITTING, grease .125 - 90	
16	---	1	OUTER SHELL, (TPRO14401)	
17	---	20	BOLT, 3/8 X 7/8 bronze (XB5007)	
18	10704-LB	2	FITTING, grease .125 - str.	
19	---	10	PUCKS, retaining - tapped (XB3020)	
20	19495-LB	4	TUBELINE, 1/2" X 24"	

Kit or Assembly - includes all items indented underneath.

LB-2-4

G9+##ZG5 )%#CTef ~@bWh X75Z \$\$\$%



Parts 00527 04/06/98  
12.50

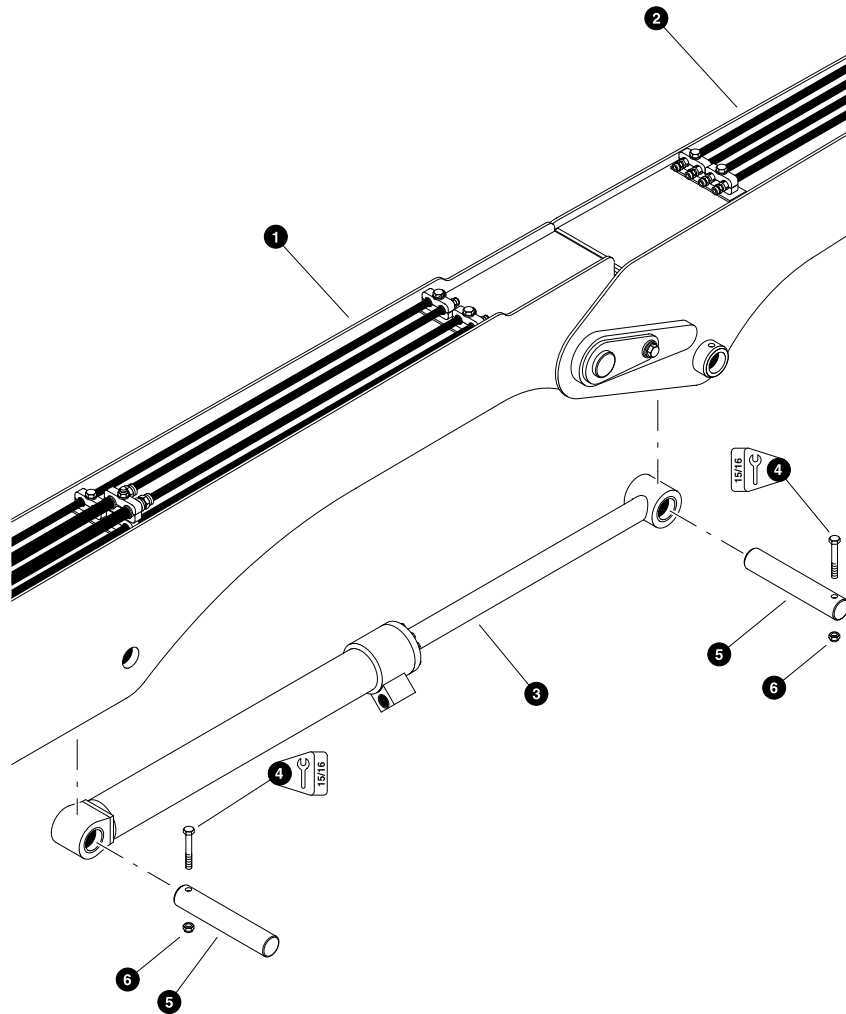
### STICK BOOM INSTALLATION (Installation the same for squirt boom)

REF	PART #	QTY	DESCRIPTION	SEE SECTION
1	10728-LB	1	NUT, nylock - 2"	
2	19384-LB	1	WASHER, burned	
3	19150-LB	AR	SHIM - 1/4" thick	
	16633-LB	AR	SHIM - 7 gauge	
	16637-LB	AR	SHIM - 10 gauge	
	16638-LB	AR	SHIM - 14 gauge	
4	20044-LB	1	PIN, boom knuckle - 3"	
5	18570-LB	1	WASHER, pin retaining	
6	15550-LB	1	WASHER, SAE flat - 3/4"	
7	15549-LB	1	BOLT - 3/4" x 2"	
8	REF.	1	MAIN BOOM ASSEMBLY	LB-1
9	REF.	1	STICK BOOM ASSEMBLY	LB-2

See referenced page for component or assembly breakdown.

?Tt gHcVtG(WZ#) %S%##&

?bTWk5bb' f ZFgV^5bb'



Parts 00528 04/09/98  
12.50

G9+##ZG5 )%#CTef ~@bWh X75Z \$##%

LB-2-7

?bTWk5bb' f ZFgV^5bb'

?Tt gHcVtG(WZ#) %S%##&

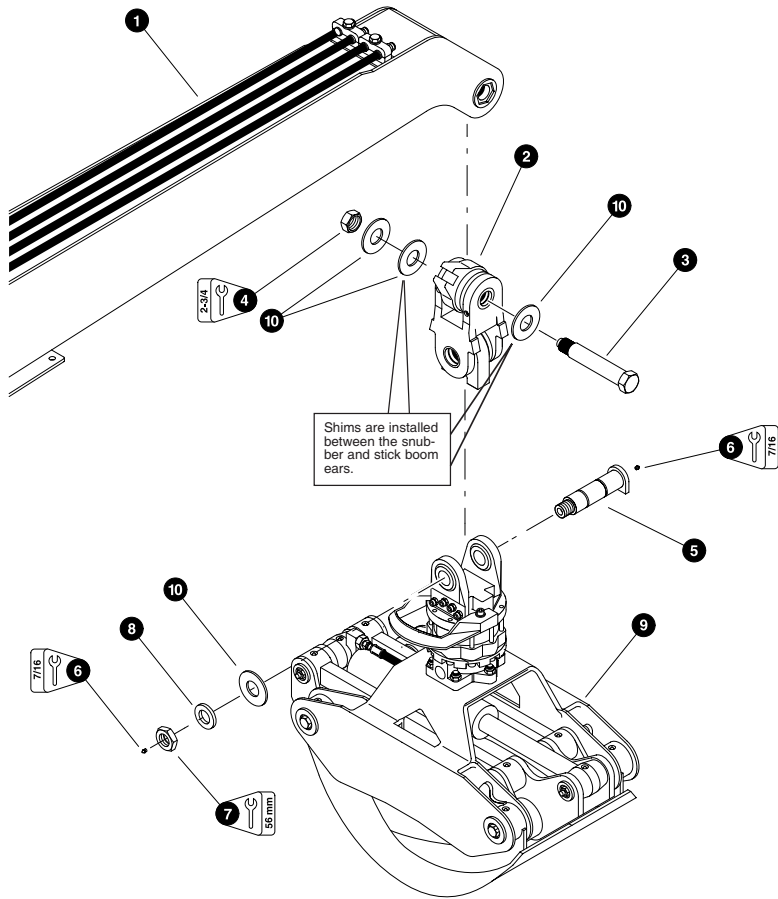
### STICK BOOM (JIB) CYLINDER INSTALLATION (Installation the same for squirt boom)

REF	PART #	QTY	DESCRIPTION	SEE SECTION
1	REF.	1	MAIN BOOM ASSEMBLY .....	LB-1
2	REF.	1	STICK BOOM ASSEMBLY .....	LB-2
3	REF.	1	STICK BOOM (JIB) CYLINDER .....	LB-4
4	10838-LB	2	BOLT - 5/8" x 5"	
5	18895-LB	2	PIN, chromed - 2-1/2" x 13-7/8"	
6	15563-LB	2	NUT, nylock - 5/8"	

See referenced page for component or assembly breakdown.

LB-2-8

G9+##ZG5 )%#CTef ~@bWh X75Z \$##%

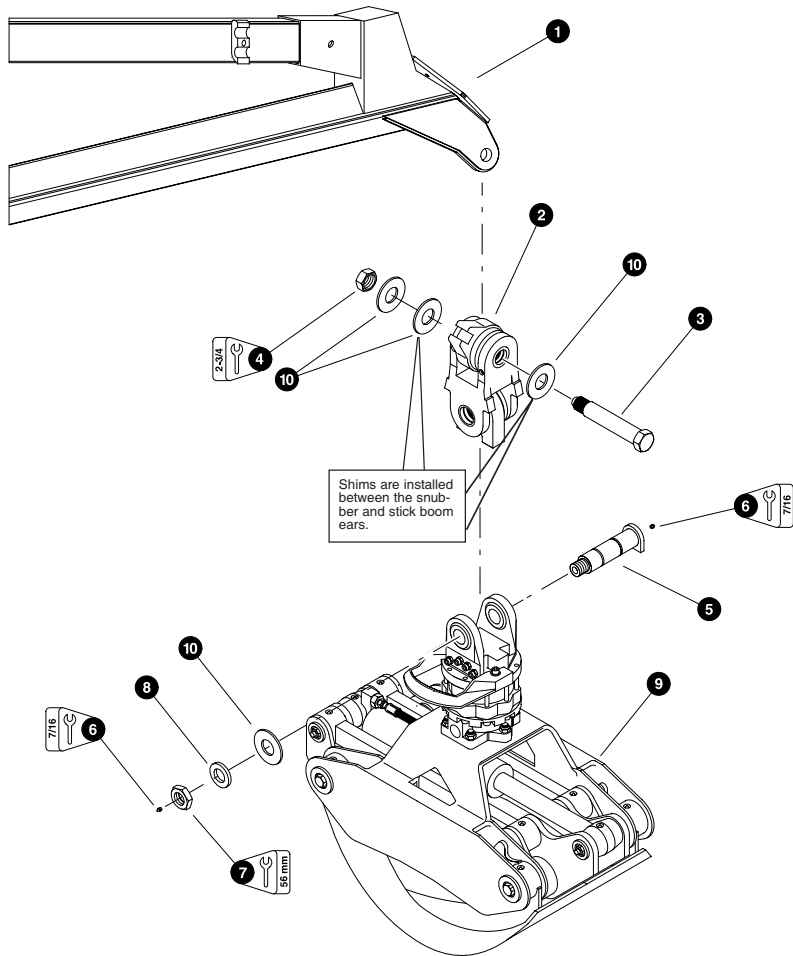


Parts T2749 07/14/03  
12,50

### HULTDINS SUPERGRIP 360S GRAPPLE INSTALLATION (With Optional QUADCO Snubber)

REF	PART #	QTY	DESCRIPTION	SEE SECTION
1	REF.	1	STICK BOOM ASSEMBLY .....	LB-2
2	19790-LB	1	SNUBBER	
3	23528-LB	1	PIN - 1-3/4" x 10-3/4"	
4	20811-LB	1	NUT, nylock - 1-1/2"	
5	19789-LB	1	PIN, grapple mount	
6	10704-LB	2	FITTING, grease - 1/8" pipe thread	
7	50281-LB	1	NUT, grapple mount pin	
8	50282-LB	1	WASHER, grapple mount pin	
9	REF.	1	GRAPPLE - Hultdins 360S (See Manufacturer's Manual)	
10	19682-LB	4	SHIM, 1.75 X .075	

- See referenced page for component or assembly breakdown.
- Kit or Assembly - includes all items indented underneath.



Parts T2750 07/14/03  
12,50

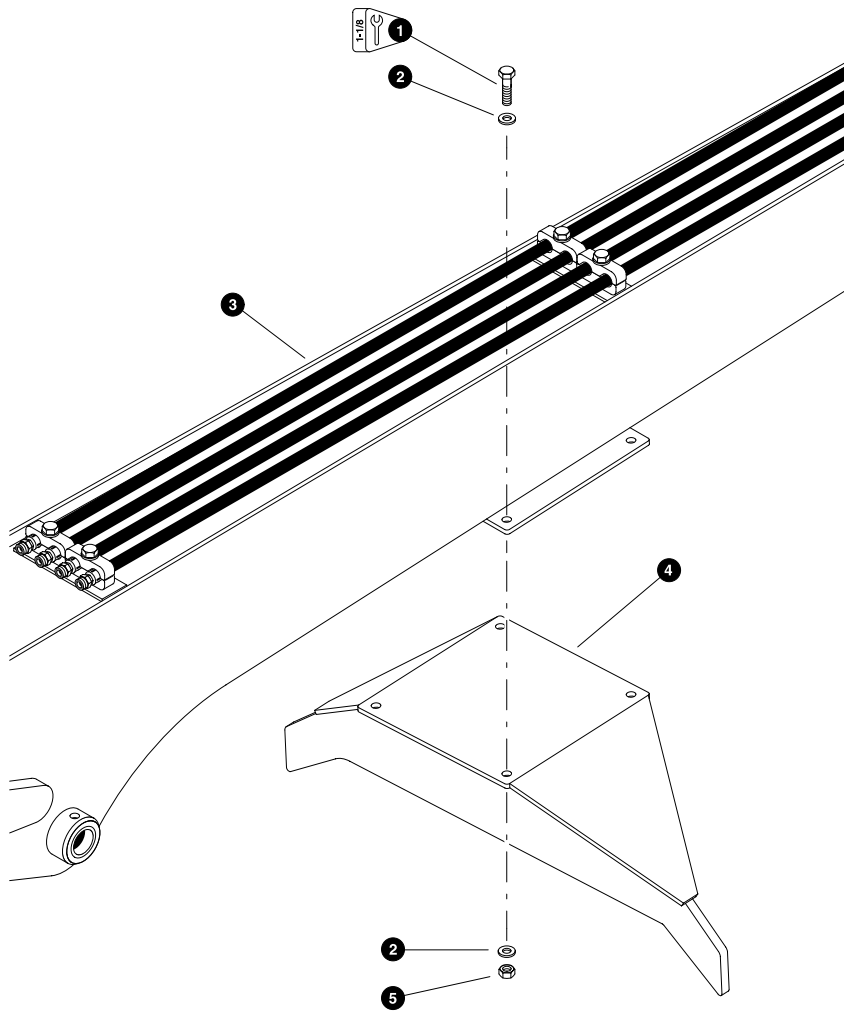
### HULTDINS SUPERGRIP 360S GRAPPLE INSTALLATION (With Optional QUADCO Snubber) (Optional Squirt Boom Installation)

REF	PART #	QTY	DESCRIPTION	SEE SECTION
1	REF.	1	STICK BOOM ASSEMBLY .....	LB-2
2	19790-LB	1	SNUBBER	
3	23528-LB	1	PIN - 1-3/4" x 10-3/4"	
4	20811-LB	1	NUT, nylock - 1-1/2"	
5	19789-LB	1	PIN, grapple mount	
6	10704-LB	2	FITTING, grease - 1/8" pipe thread	
7	50281-LB	1	NUT, grapple mount pin	
8	50282-LB	1	WASHER, grapple mount pin	
9	REF.	1	GRAPPLE - Hultdins 360S (See Manufacturer's Manual)	
10	19682-LB	4	SHIM, 1.75 X .075	

- See referenced page for component or assembly breakdown.
- Kit or Assembly - includes all items indented underneath.

?Tt gHcWg(WZ#) %S%##&

?bTWk5bb' f ZFgV^5bb'



Parts 00531 04/06/98  
18.75

G9+##ZG5 )%#CTef ~@bWh X75Z \$##%

LB-2-13

?bTWk5bb' f ZFgV^5bb'

?Tt gHcWg(WZ#) %S%##&

### OPTIONAL STICK BOOM MOUNTED HEEL

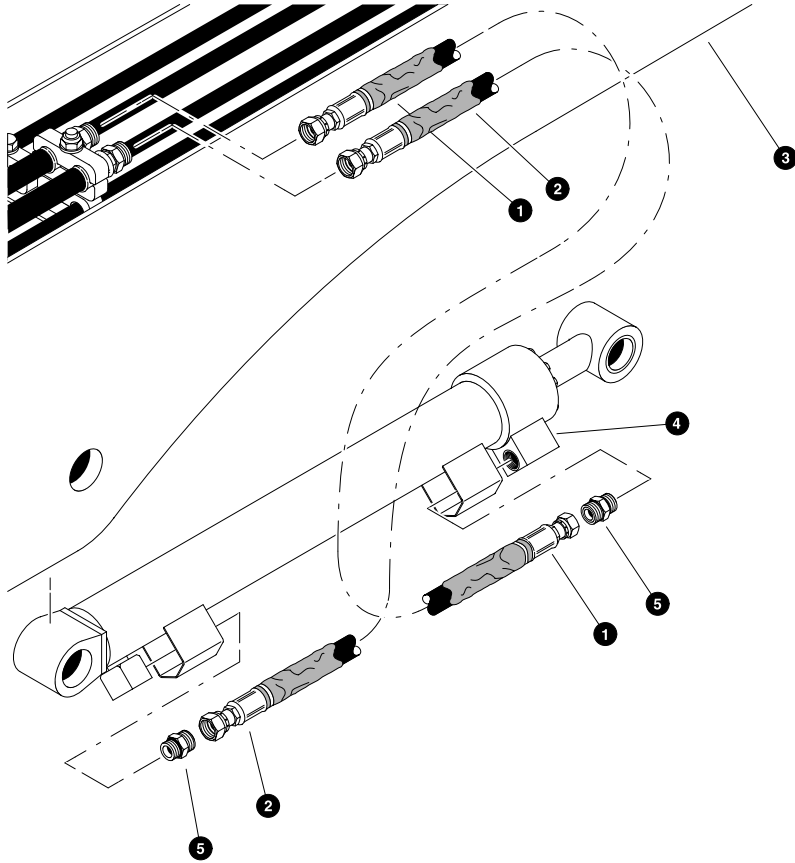
REF	PART #	QTY	DESCRIPTION	SEE SECTION
1	10736-LB	4	BOLT - 1/2" x 2"	
2	15534-LB	8	WASHER, SAE flat - 1/2"	
3	REF.	1	STICK BOOM ASSEMBLY .....	LB-2
4	20858-LB	1	WELDMENT, stick boom heel	
5	10815-LB	4	NUT, lock - 1/2"	

See referenced page for component or assembly breakdown.

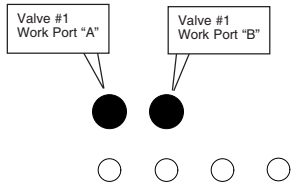
LB-2-14

G9+##ZG5 )%#CTef ~@bWh X75Z \$##%





Main boom hoseline connections as viewed from the nose of the main boom looking towards the rear of the machine.



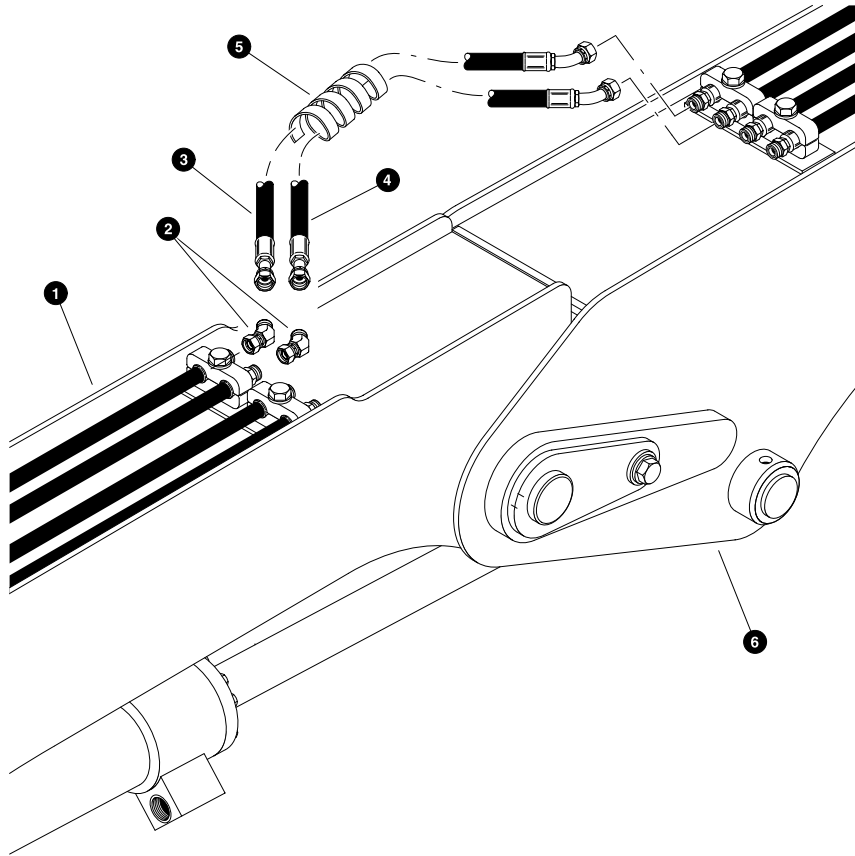
Parts 01702 05/22/2000  
25.00

**STICK BOOM CYLINDER FUNCTION**  
(Main Boom Hoselines To Stick Boom Cylinder)

REF	PART #	QTY	DESCRIPTION	SEE SECTION
1	21216-LB	1	HOSE ASSEMBLY - 4057-12-120S-120S-W (Main boom upper engine-side hoseline to stick boom cylinder rod port)	
2	23039-LB	1	HOSE ASSEMBLY - 4055-12-120S-120S-W (Main boom upper cab-side hoseline to stick boom cylinder base port)	
3	REF.	1	MAIN BOOM ASSEMBLY	LB-1
4	REF.	1	STICK BOOM CYLINDER	LB-2
5	15152-LB	2	CONNECTOR, straight - FF1852T-1212S	

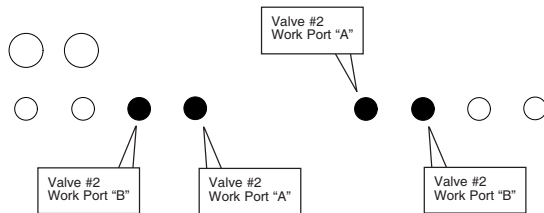
See referenced page for component or assembly breakdown.





Main boom hoseline connections as viewed from the nose of the main boom looking towards the rear of the machine.

Stick boom hoseline connections as viewed looking towards the grapple bucket.

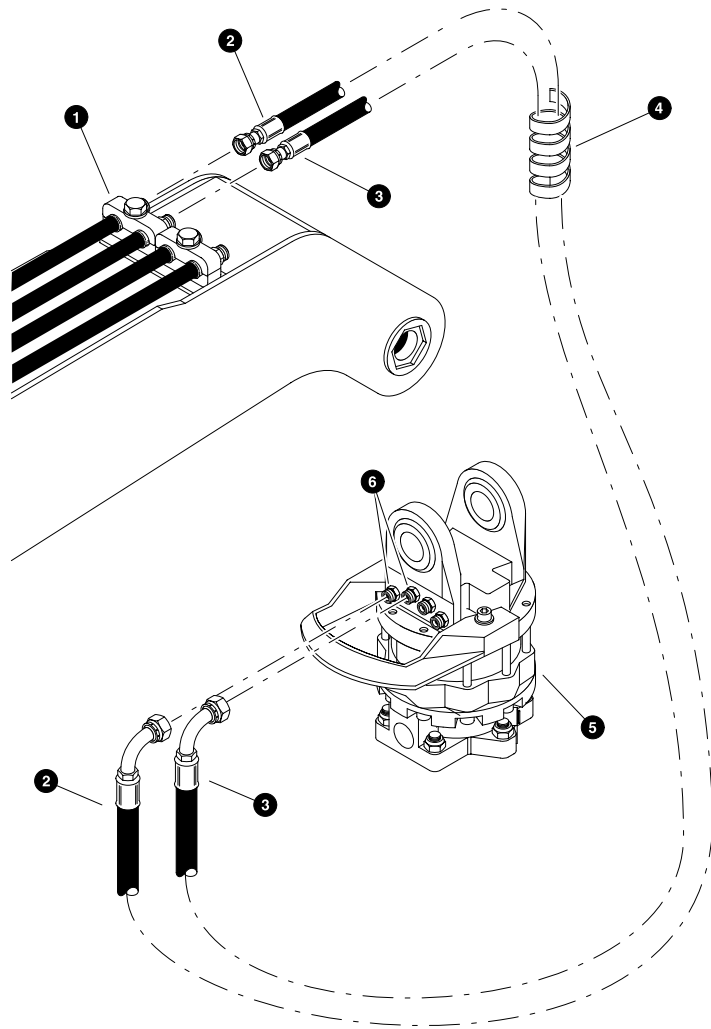


Parts 00536 04/07/98  
25.00

**GRAPPLE ROTATE FUNCTION**  
(Main Boom Hoselines To Stick Boom Hoselines)

REF	PART #	QTY	DESCRIPTION	SEE SECTION
1	REF.	1	MAIN BOOM ASSEMBLY	LB-1
2	20678-LB	2	ELBOW, 45° swivel - FF2133T-0808S	
3	20112-LB	1	HOSE ASSEMBLY - 4045.5-08-080S-0804 (Main boom lower outer engine-side hoseline to stick boom outer engine-side hoseline)	
4	20113-LB	1	HOSE ASSEMBLY - 4047-08-080S-0804 (Main boom lower middle engine-side hoseline to stick boom middle engine-side hoseline)	
5	19677-LB	AR	PROTECTOR, spiral hose wrap - 1-1/4"	
6	REF.	1	STICK BOOM ASSEMBLY	LB-2

- See referenced page for component or assembly breakdown.
- Bulk material - order length required in feet or meters.

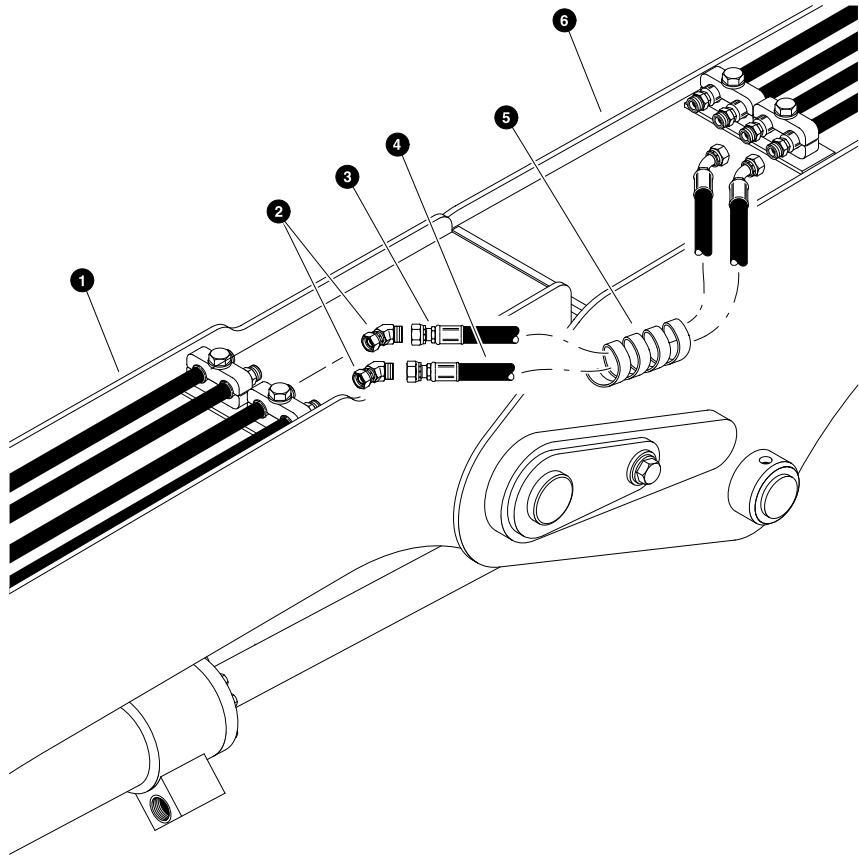


Parts T2751 07/14/03  
25.00

**GRAPPLE ROTATE FUNCTION**  
(Stick Boom to Grapple Rotator Hoselines)

REF	PART #	QTY	DESCRIPTION	SEE SECTION
1	REF.	1	☐ STICK BOOM ASSEMBLY . . . . .	LB-2
2	50714-LB	1	HOSE ASSEMBLY - 4059-08-080S-0809 (Stick boom outer engine-side hoseline to grapple outer engine-side port)	
3	50714-LB	1	HOSE ASSEMBLY - 4059-08-080S-0809 (Stick boom middle engine-side hoseline to grapple middle engine-side port)	
4	19677-LB	AR	✂ PROTECTOR, spiral hose wrap - 1-1/4"	
5	REF.	1	GRAPPLE BUCKET ROTATOR	
6	15115-LB	2	CONNECTOR, straight - 848 TTO 08X10	

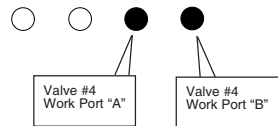
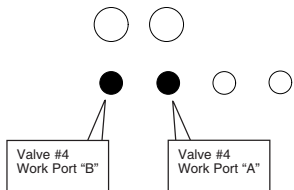
- ☐ See referenced page for component or assembly breakdown.
- ✂ Bulk material - order length required in feet or meters.



Main boom hoseline connections as viewed from the nose of the main boom looking towards the rear of the machine.

Stick boom hoseline connections as viewed looking forward towards the grapple bucket.

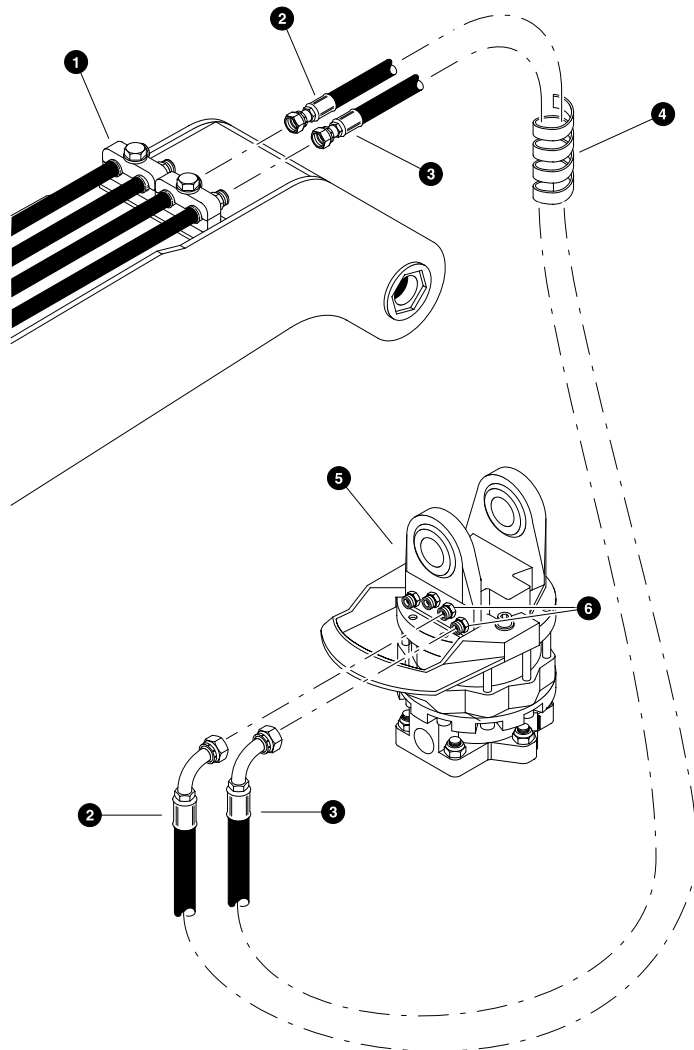
Parts 00539 04/07/98  
25.00



**GRAPPLE OPEN/CLOSE FUNCTION**  
(Main Boom Hoselines To Stick Boom Hoselines)

REF	PART #	QTY	DESCRIPTION	SEE SECTION
1	REF.	1	MAIN BOOM ASSEMBLY	LB-1
2	20678-LB	2	ELBOW, 45° swivel - FF2133T-0808S	
3	20113-LB	1	HOSE ASSEMBLY - 4047-08-080S-0804 (Main boom lower middle cab-side hoseline to stick boom middle cab-side hoseline)	
4	20112-LB	1	HOSE ASSEMBLY - 4045.5-08-080S-0804 (Main boom lower outer cab-side hoseline to stick boom outer cab-side hoseline)	
5	19677-LB	AR	PROTECTOR, spiral hose wrap - 1-1/4"	
6	REF.	1	STICK BOOM ASSEMBLY	LB-2

- See referenced page for component or assembly breakdown.
- Bulk material - order length required in feet or meters.

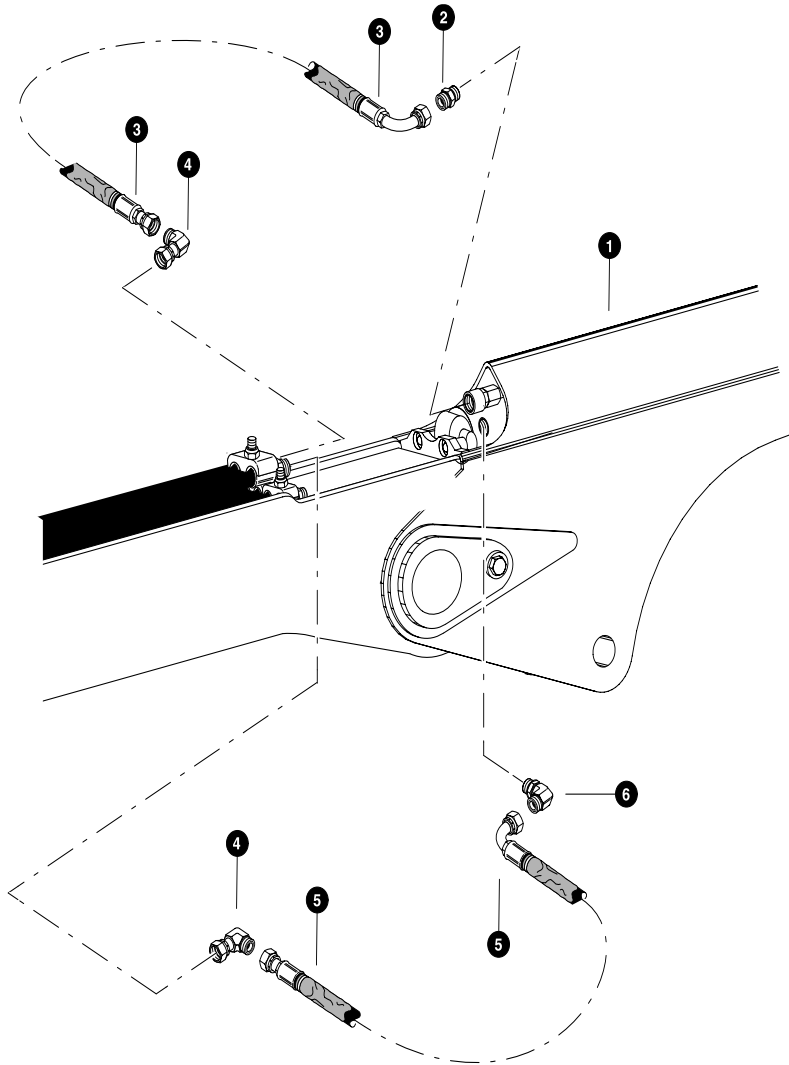


Parts 00540 04/07/98  
25.00

**GRAPPLE OPEN/CLOSE FUNCTION**  
(Stick Boom to Grapple Rotator Hoselines)

REF	PART #	QTY	DESCRIPTION	SEE SECTION
1	REF.	1	☐ STICK BOOM ASSEMBLY .....	LB-2
2	50714-LB	1	HOSE ASSEMBLY - 4059-08-080S-0809 (Stick boom outer engine-side hoseline to grapple outer engine-side port)	
3	50714-LB	1	HOSE ASSEMBLY - 4059-08-080S-0809 (Stick boom middle engine-side hoseline to grapple middle engine-side port)	
4	19677-LB	AR	✂ PROTECTOR, spiral hose wrap - 1-1/4"	
5	REF.	1	GRAPPLE BUCKET ROTATOR	
6	15115-LB	2	CONNECTOR, straight - 848 TTO 08X10	

- ☐ See referenced page for component or assembly breakdown.
- ✂ Bulk material - order length required in feet or meters.

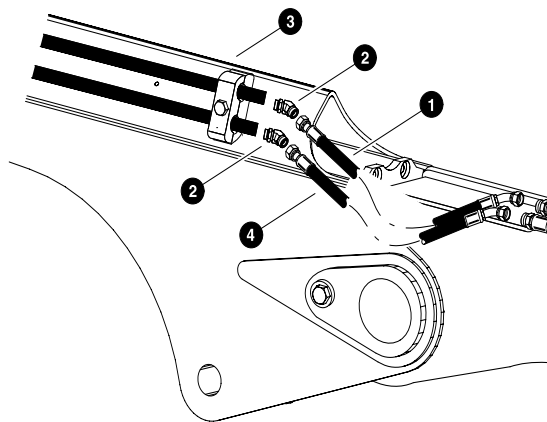
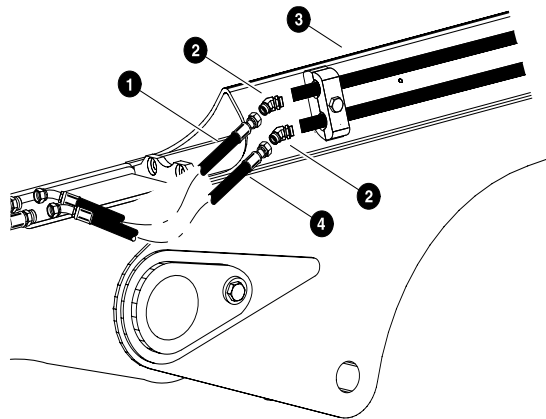


Parts T9763 07/15/03

**MAIN BOOM TO SQUIRT BOOM CONNECTION**  
 (Main Boom Hoseslines To Squirt Boom Cylinder)  
 (Optional)

REF	PART #	QTY	DESCRIPTION	SEE SECTION
1	REF.	1	SQUIRT BOOM .....	LB-2
2	15152-LB	1	CONNECTOR, straight - FF1852T-1212S	
3	---	1	HOSE ASSEMBLY - 4044-12-120S-1209 (Main boom outer hose line to squirt boom cylinder rod)	
4	17670-LB	2	ELBOW, 90 swivel - ff2098T - 1212s	
5	---	1	HOSE ASSEMBLY - 4044-12-120S-1209 (Main boom inner hose line to squirt boom cylinder base)	
6	17688-LB	1	ELBOW, 90 - FF1868 - 1212S	

See referenced page for component or assembly breakdown.

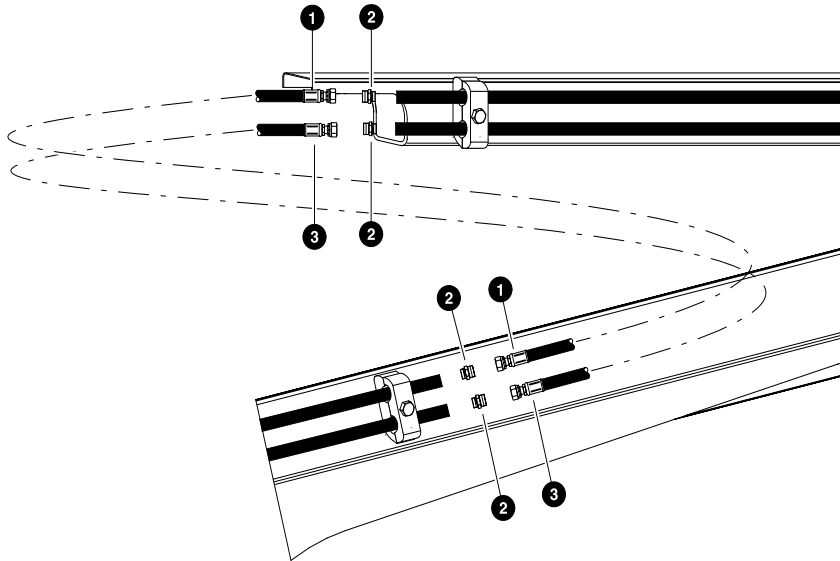


Parts T2748 07/08/03  
18.75

**MAIN BOOM TO SQUIRT BOOM CONNECTION**  
**(Main Boom Hoselines To Squirt Boom Tubelines)**  
**(Optional)**

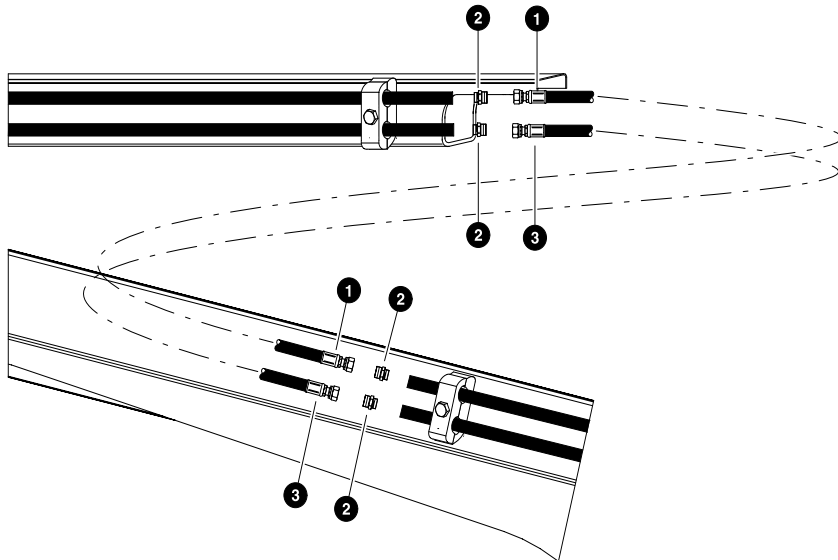
REF	PART #	QTY	DESCRIPTION	SEE SECTION
1	---	2	HOSE ASSEMBLY - 4050-08-080S-0804 (Main boom inner hoseline to squirt boom inner hoseline)	
2	19126-LB	4	ELBOW, 45 FF2068T - 08-08	
3	REF.	1	SQUIRT BOOM ASSY. ....	LB-2
4	---	2	HOSE ASSEMBLY - 4051-08-080S-0804 (Main boom outer hoseline to squirt boom outer hoseline)	

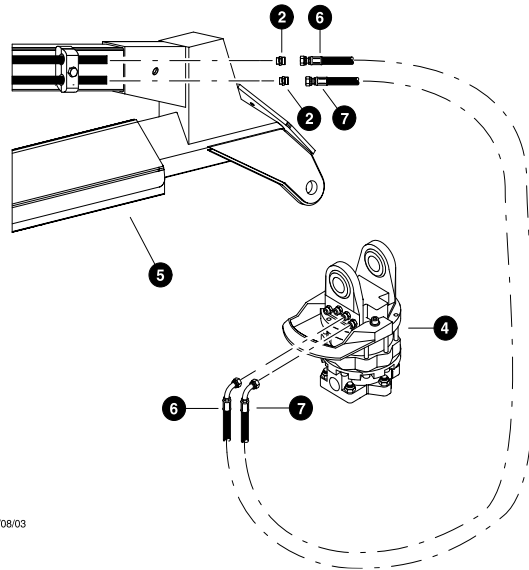
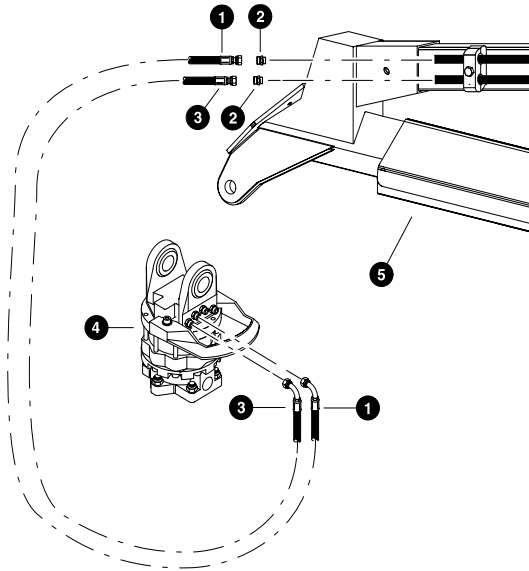
See referenced page for component or assembly breakdown.



**SQUIRT BOOM CONNECTION**  
**(Squirt boom Stinger Connection)**  
**(Optional)**

REF	PART #	QTY	DESCRIPTION	SEE SECTION
1	---	2	HOSE ASSEMBLY - 4093.5-08-080S-080S (Squirt boom lowertube line to Singer lower tubeline)	
2	15117-LB	4	CONNECTOR, STR FF 1852T - 08-08S	
3	---	2	HOSE ASSEMBLY - 4093.5-08-080S-080S (Squirt boom lowertube line to Singer lower tubeline)	





Parts T2746 07/08/03  
12.50

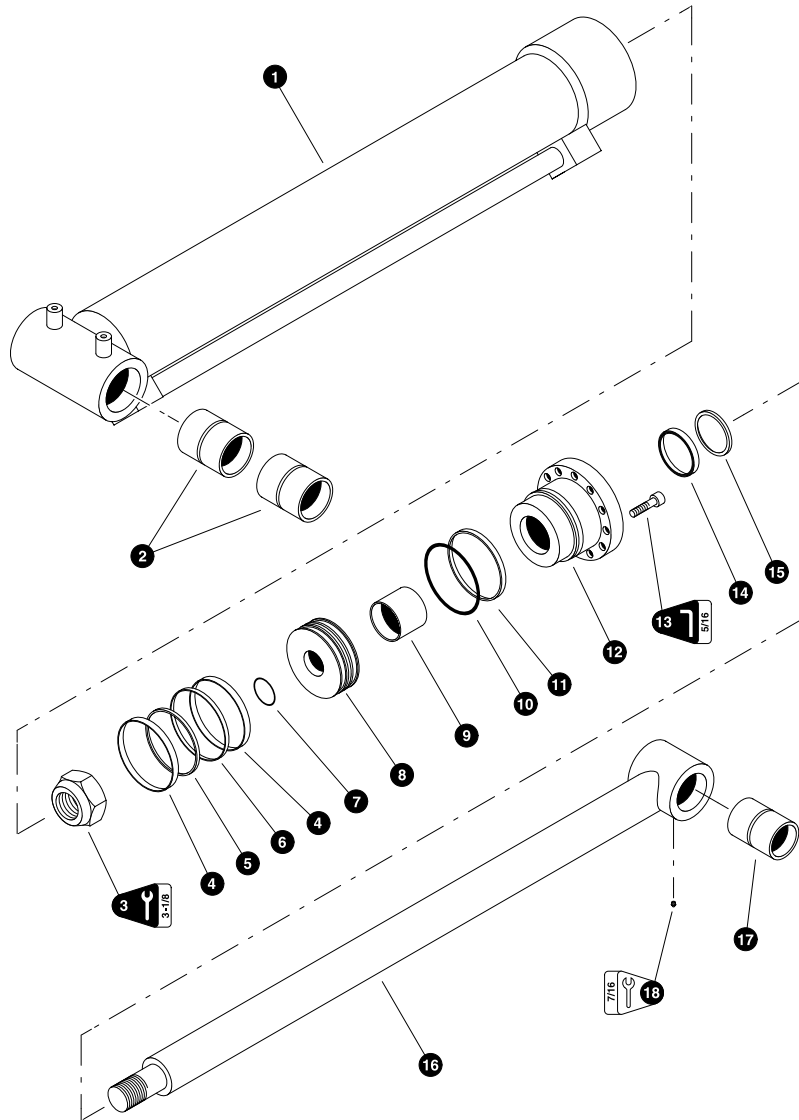
**SQUIRT BOOM TO GRAPPLE CONNECTION**  
(Squirt Boom Tubelines To Grapple)  
(Optional)

REF	PART #	QTY	DESCRIPTION	SEE SECTION
1	50714-LB	1	HOSE ASSEMBLY - 4059-08-080S-0809 (Squirt boom top engine-side hoseline to grapple middle engine-side port)	
2	15117-LB	4	CONNECTOR, STR FF 1852T - 08-08S	
3	50714-LB	1	HOSE ASSEMBLY - 4059-08-080S-0809 (Squirt boom bottom engine-side hoseline to grapple outer engine-side port)	
4	REF.	1	ROTATOR, GV17	LB-5
5	REF.	1	SQUIRT BOOM ASSY.	LB-2
6	50714-LB	1	HOSE ASSEMBLY - 4059-08-080S-0809 (Squirt boom top cab-side hoseline to grapple middle cab-side port)	
7	50714-LB	1	HOSE ASSEMBLY - 4059-08-080S-0809 (Squirt boom bottom cab-side hoseline to grapple outer cab-side port)	

See referenced page for component or assembly breakdown.





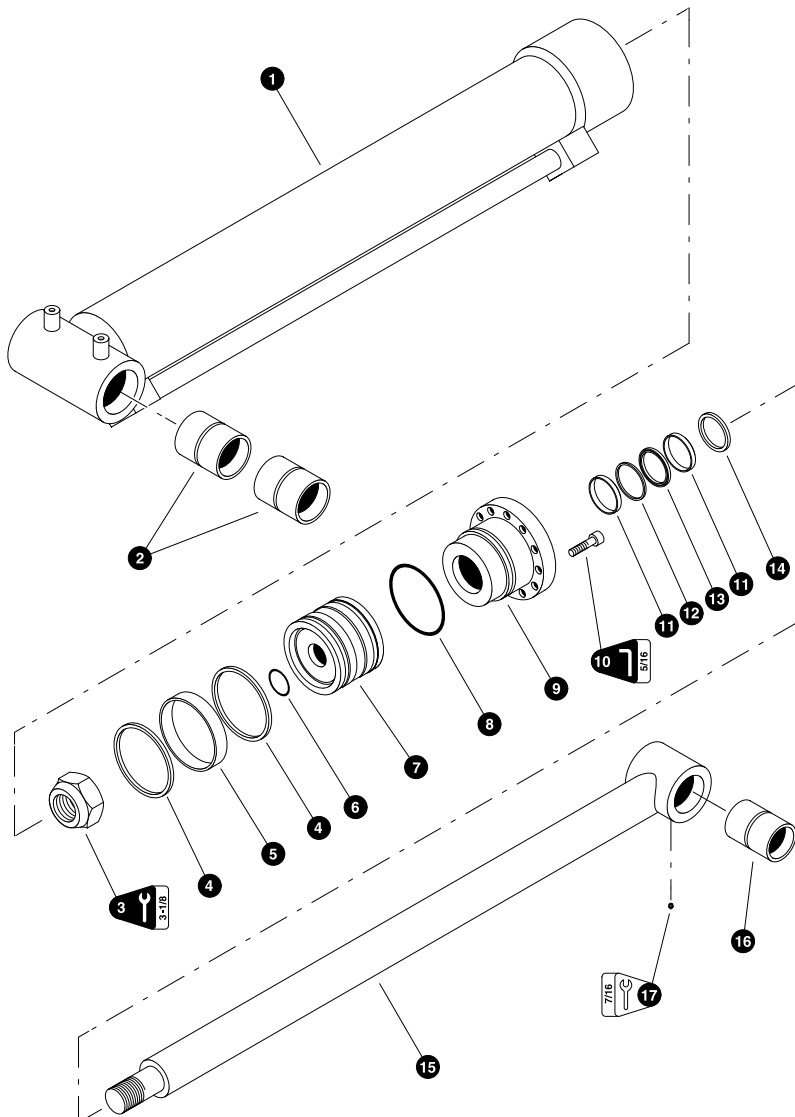


02483 12/17/2001  
18.75

**MAIN BOOM (HOIST) CYLINDER**  
**(Heavy Duty)**  
**(Used on machines built before 01/01/03 )**

REF	PART #	QTY	DESCRIPTION	SEE PAGE
-	22308-LB	1	<input type="checkbox"/> MAIN BOOM CYLINDER ASSEMBLY	
1	23205-LB	1	<input type="checkbox"/> BARREL ASSEMBLY	
2	11706-LB	2	BUSHING - 3" x 4-1/4"	
3	15287-LB	1	NUT, cylinder rod - 2" NF ( <b>Torque to 2700 +/- 200 ft.lbs. (3600 +/- 265 Nm)</b> )	
4	NSS	2	⊗ RING, piston wear	
5	NSS	1	⊗ RING, piston loader	
6	NSS	1	⊗ RING, piston chem-cast	
7	NSS	1	⊗ O-RING, piston	
8	23206-LB	1	PISTON	
9	NSS	1	⊗ RING, rod bearing wear	
10	NSS	1	⊗ O-RING, rod bearing	
11	NSS	1	⊗ RING, rod bearing back-up	
12	23208-LB	1	BEARING, rod	
13	19912-LB	12	BOLT, allen head - 5/8" x 2-1/4" ( <b>Torque to 175 ft.lbs (233 Nm)</b> )	
14	NSS	1	⊗ U-CUP, rod bearing	
15	NSS	1	⊗ WIPER, rod	
16	19222-LB	1	<input type="checkbox"/> ROD ASSEMBLY	
17	11704-LB	1	BUSHING - 2-1/2" x 4-1/4"	
18	10704-LB	1	FITTING, straight grease - 1/8" pipe thread	
-	23207-LB	1	<input type="checkbox"/> KIT, seal repair - main boom cylinder	

- Kit or Assembly - includes all items indented underneath.
- ⊗ Included in seal repair kit Part # 23207-LB.

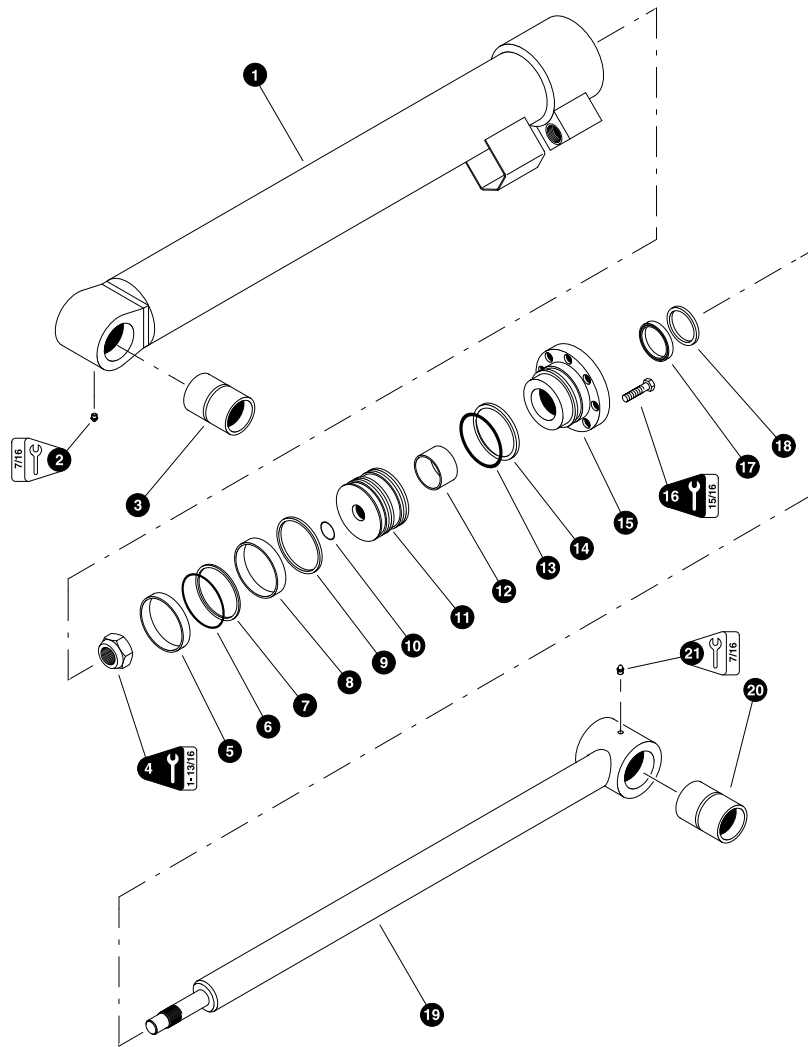


T2759 07/15/2003  
18,75

**MAIN BOOM (HOIST) CYLINDER**  
**(Heavy Duty - Ram Rod)**  
**(Used on machines built after 01/01/03 )**

REF	PART #	QTY	DESCRIPTION	SEE PAGE
-	26039-LB	1	<input type="checkbox"/> MAIN BOOM CYLINDER ASSEMBLY	
1	50208-LB	1	<input type="checkbox"/> BARREL ASSEMBLY	
2	- - -	2	BUSHING - 3 x 3.5 x 4.25 (722154)	
3	50213-LB	1	NUT, cylinder rod - 2" NF ( <b>Torque to 2620 ft - lbs</b> )	
4	NSS	2	⌘ RING, piston wear	
5	NSS	1	⌘ RING, piston	
6	NSS	1	⌘ O-RING, piston	
7	50210-LB	1	PISTON	
8	NSS	1	⌘ O-RING, rod bearing	
9	50211-LB	1	BEARING, rod	
10	- - -	14	BOLT, allen head - 1/2 x 2 (711080)	
11	NSS	2	⌘ RING, rod bearing wear	
12	NSS	1	⌘ RING, rod bearing	
13	NSS	1	⌘ RING, rod bearing	
14	NSS	1	⌘ WIPER, rod	
15	50209-LB	1	<input type="checkbox"/> ROD ASSEMBLY	
16	- - -	1	BUSHING - 2.5 x 3 x 4.25 (722158)	
17	10704-LB	1	FITTING, straight grease - 1/8" pipe thread	
-	50212-LB	1	KIT, seal repair - main boom cylinder	

- Kit or Assembly - includes all items indented underneath.
- ⌘ Included in seal repair kit Part # 50212-LB.

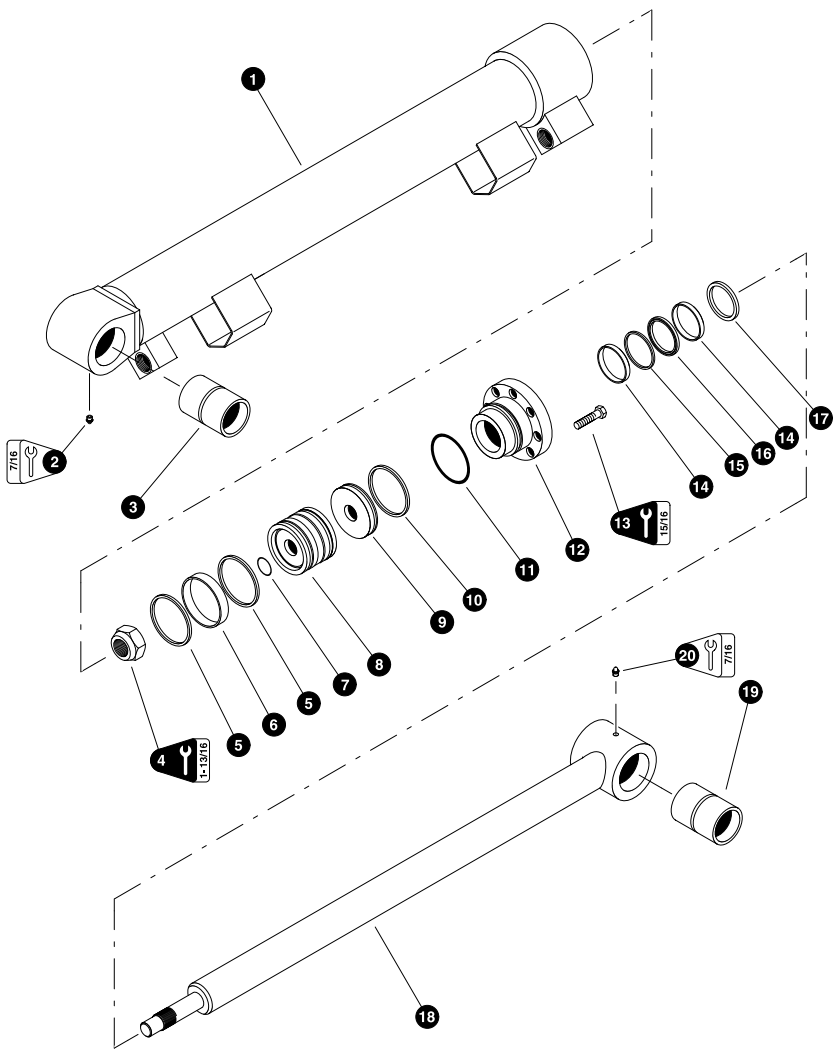


DEP 1 11/01/03 06/01/03

**STICK BOOM (JIB) CYLINDER  
(Heavy Duty)**  
(Used on machines built before 02/13/03 )

REF	PART #	QTY		DESCRIPTION	SEE PAGE
-	22307-LB	1	<input type="checkbox"/>	STICK BOOM CYLINDER ASSEMBLY	
1	23199-LB	1	<input type="checkbox"/>	BARREL ASSEMBLY	
2	10704-LB	1		FITTING, straight grease - 1/8" pipe thread	
3	11704-LB	1		BUSHING - 2-1/2" x 4-1/4"	
4	23204-LB	1		NUT, cylinder rod - 1-3/4" (Torque to 2400+/- 150 ft.lbs. (3200+/- 200 Nm))	
5	NSS	1	⊗	RING, piston wear	
6	NSS	1	⊗	RING, piston loader	
7	NSS	1	⊗	RING, piston chem-cast	
8	NSS	1	⊗	RING, piston wear	
9	NSS	1	⊗	RING, piston seal	
10	NSS	1	⊗	O-RING, piston	
11	23201-LB	1		PISTON	
12	NSS	1	⊗	RING, rod bearing wear	
13	NSS	1	⊗	O-RING, rod bearing	
14	NSS	1	⊗	RING, rod bearing back-up	
15	23203-LB	1		BEARING, rod	
16	15681-LB	8		BOLT - 5/8" x 2-1/4" (Torque to 175 ft.lbs (233 Nm))	
17	NSS	1	⊗	U-CUP, rod bearing	
18	NSS	1	⊗	WIPER, rod	
19	23200-LB	1	<input type="checkbox"/>	ROD ASSEMBLY	
20	11704-LB	1		BUSHING - 2-1/2" x 4-1/4"	
21	10704-LB	1		FITTING, straight grease - 1/8" pipe thread	
-	23202-LB	1		KIT, seal repair - stick boom cylinder	

- Kit or Assembly - includes all items indented underneath.
- ⊗ Included in seal repair kit Part # 23202-LB.

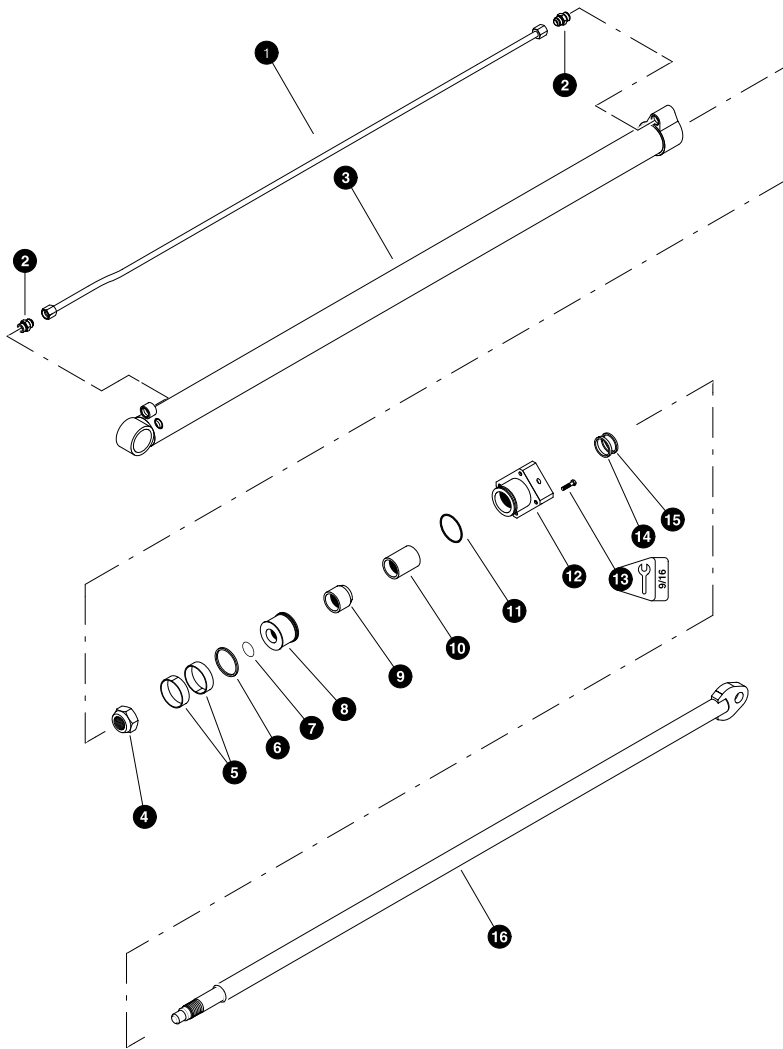


T2758 07/15/2003  
18.75

**STICK BOOM (JIB) CYLINDER**  
**(Heavy Duty - Ram Rod)**  
**(Used on machines built after 02/13/03 )**

REF	PART #	QTY	DESCRIPTION	SEE PAGE
-	26038-LB	1	<input type="checkbox"/> STICK BOOM CYLINDER ASSEMBLY	
1	50202-LB	1	<input type="checkbox"/> BARREL ASSEMBLY	
2	10704-LB	1	FITTING, straight grease - 1/8" pipe thread	
3	- - -	1	BUSHING - 2.5 x 3 x 4.25 (722158)	
4	50207-LB	1	NUT, cylinder rod - 1-3/4" ( <b>Torque to 1070 ft - lbs</b> )	
5	NSS	2	⌘ RING, piston wear	
6	NSS	1	⌘ RING, piston	
7	NSS	1	⌘ O-RING, piston	
8	50204-LB	1	PISTON	
9	NSS	1	PISTON EXT. (410538)	
10	NSS	1	⌘ RING, piston	
11	NSS	1	⌘ O-RING, rod bearing	
12	50205-LB	1	BEARING, rod	
13	- - -	16	BOLT - 3/8 X 1 3/4	
14	NSS	2	⌘ RING, rod bearing wear	
15	NSS	1	⌘ RING, rod bearing	
16	NSS	1	⌘ RING, rod bearing	
17	NSS	1	⌘ WIPER, rod bearing	
18	50203-LB	1	<input type="checkbox"/> ROD ASSEMBLY	
19	- - -	1	BUSHING - 2.5 x 3 x 4.25 (722158)	
20	10704-LB	1	FITTING, straight grease - 1/8" pipe thread	
-	50206-LB	1	<input type="checkbox"/> KIT, seal repair - stick boom cylinder	

- Kit or Assembly - includes all items indented underneath.
- ⌘ Included in seal repair kit Part # 50206-LB.



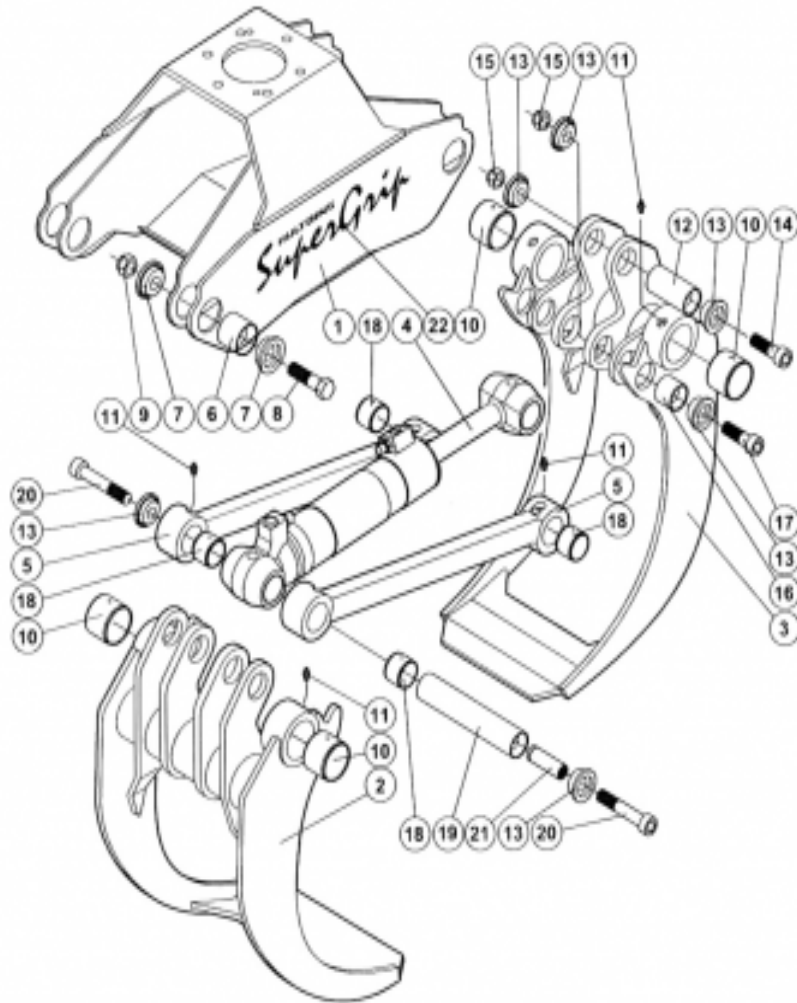
Parts T2754 07/14/2003  
12,20

**SQUIRT BOOM CYLINDER  
(optional)**

REF	PART #	QTY	DESCRIPTION	SEE PAGE
-	51008-LB	1	<input type="checkbox"/> CYLINDER, 6' squirt	
1	---	1	TRANSFER TUBE (281266a)	
2	---	1	FITTING (710785a)	
3	51028-LB	1	BARREL ASSEMBLY	
4	51032-LB	1	NUT (712118A)	
5	---	1	<input type="checkbox"/> RING, piston - wear	
6	---	1	<input type="checkbox"/> RING, piston - square	
7	---	1	<input type="checkbox"/> O-RING, piston	
8	51030-LB	1	PISTON	
9	---	1	CUSHION SLEEVE	
10	---	1	BUSHING, rod bearing (bronze)	
11	---	1	<input type="checkbox"/> O-RING, rod bearing	
12	51031-LB	1	BEARING, rod	
13	---	4	BOLT - (711206A)	
14	---	1	<input type="checkbox"/> U-CUP, rod bearing	
15	---	1	<input type="checkbox"/> WIPER, rod	
16	51029-LB	1	ROD ASSEMBLY	
-	51033-LB	1	<input type="checkbox"/> KIT, seal repair - boom extension cylinder	

- Kit or Assembly - includes all items indented underneath.
- Included in seal repair kit Part # 51033-LB



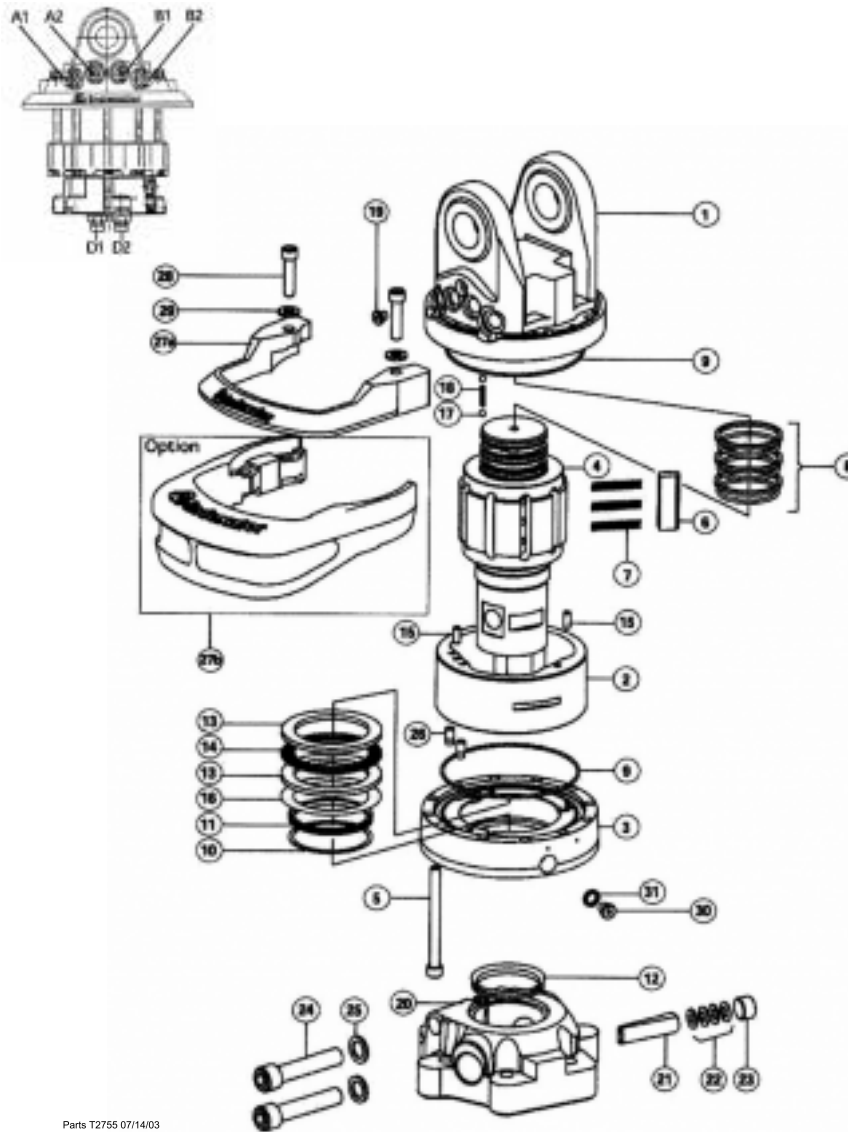


### HULTDINS 360S GRAPPLE

REF	PART #	QTY	DESCRIPTION	SEE SECTION
-	22719-LB	1	<input type="checkbox"/> GRAPPLE, Hultdins 360s w/GV 17us	
1	---	1	FRAME, (0680501)	
2	---	1	GRAPPLE ARM, female (0680508)	
3	---	1	GRAPPLE ARM, male (0680507)	
4	---	1	CYLINDER (0150016)	
5	---	2	ROD (0680030)	
6	---	4	PIN (0680521)	
7	---	8	WASHER (0683021)	
8	---	4	SCREW, hex (0104634)	
9	---	4	NUT (0106033)	
10	---	4	BUSHING, (0683071)	
11	---	8	NIPPLE, grease (0114004)	
12	---	1	PIN (0680077)	
13	---	8	WASHER (0680054)	
14	---	1	BOLT, allen (0104132)	
15	---	3	NUT, (0106030)	
16	---	2	PIN, (0680015)	
17	---	2	BOLT, allen (0104502)	
18	---	4	BUSHING, (0680072)	
19	---	1	PIN, (0680075)	
20	---	1	BOLT, allen (0104502)	
20	---	1	BOLT, allen (0104132)	
21	---	1	NUT, (0660263)	

Kit or Assembly - includes all items indented underneath.



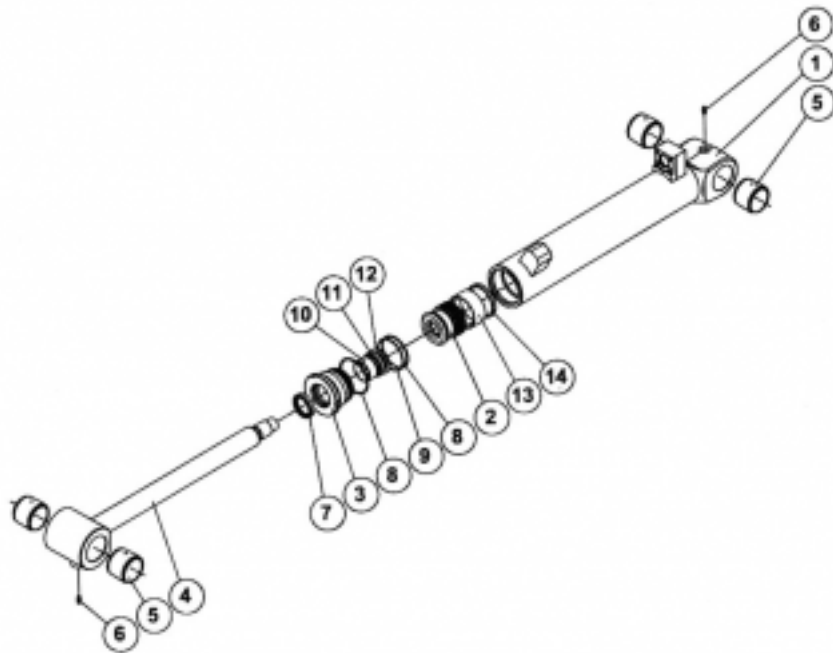


Parts T2755 07/14/03

**HULTDINS 360S GRAPPLE  
(Indexator GV 17us Rotator)**

REF	PART #	QTY	DESCRIPTION	SEE SECTION
-	50586-LB	1	□ ROTATOR, GV 17us	
1	---	1	STATOR PLATE, upper (5114178)	
2	---	1	STATOR FRAME (5114023)	
3	---	1	STATOR PLATE, lower (5114020)	
4	---	1	ROTATOR SHAFT, (5117027)	
5	---	12	SCREW, (1002120)	
6	---	9	VANE, (5011160)	
7	---	27	SPRING, (5006030)	
8	---	3	☼ GLIDE RING, (1005669)	
9	---	2	☼ O-RING (1013515)	
10	---	1	☼ RING, support (1015064)	
11	---	1	☼ SEAL (1023753)	
12	---	1	☼ V-RING (1019470)	
13	---	2	WASHER, (1018951)	
14	---	1	BEARING, axial needle (1015080)	
15	---	4	PIN (1019900)	
16	---	1	SHIM SET (5010081)	
17	---	2	BALL (1005545)	
18	---	1	SPRING (1020536)	
19	---	1	PLUG, (5001381)	
20	---	1	LINK, lower (5117022)	
21	---	1	WEDGE, (5010038)	
22	---	4	SPRING, cup (1015643)	
23	---	1	SCREW, locking (5010039)	
24	---	2	SCREW, (1019488)	
25	---	2	WASHER, (1019496)	
26	---	2	RESTRICTOR, (5011107)	
27	---	1	GUARD, hose (5011006)	
28	---	2	SCREW, (1019926)	
29	---	2	WASHER, (1017326)	
30	---	1	PLUG, magnetic (1025709)	
31	---	1	SEAL, bonded (1019116)	
	20276-LB	1	KIT, seal repair - GV 17 rotator	
A1	15115-LB	1	CONNECTOR, straight - 848 TTO 08X10	
A2	15115-LB	1	CONNECTOR, straight - 848 TTO 08X10	
B1	15115-LB	1	CONNECTOR, straight - 848 TTO 08X10	
B2	15115-LB	1	CONNECTOR, straight - 848 TTO 08X10	
D1	15117-LB	1	CONNECTOR, straight - 848 TTO 08 X 08	
D2	15117-LB	1	CONNECTOR, straight - 848 TTO 08 X 08	

□ Kit or Assembly - includes all items indented underneath.  
☼ Included in seal repair kit Part # 20276-LB.



Parts T2756 07/14/03

### HULTDINS 360S GRAPPLE (Cylinder)

REF	PART #	QTY	DESCRIPTION	SEE SECTION
-	51035-LB	1	<input type="checkbox"/> CYLINDER, hultdins grapple (0150016)	
1	---	1	BARREL (0150555)	
2	---	1	PISTON (0150502)	
3	---	1	GLAND (0150503)	
4	---	1	ROD (0150554)	
5	---	4	BEARING, plain (0680073)	
6	---	2	FITTING, grease M6 (0114004)	
7	---	1	<input type="checkbox"/> SEAL, dust	
8	---	2	<input type="checkbox"/> O-RING	
9	---	1	<input type="checkbox"/> RING, backup	
10	---	1	<input type="checkbox"/> RING, guide	
11	---	1	<input type="checkbox"/> SEAL, rod	
12	---	1	<input type="checkbox"/> RING, retainer	
13	---	1	<input type="checkbox"/> SEAL, piston	
14	---	1	<input type="checkbox"/> RING, piston (0150527)	
	51034-LB		<input type="checkbox"/> KIT, SEAL REPAIR (0121076)	

- Kit or Assembly - includes all items indented underneath.
- Included in seal repair kit Part #51034 -LB.

