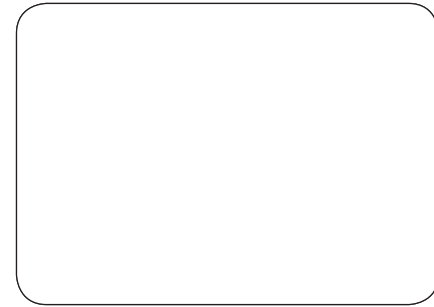
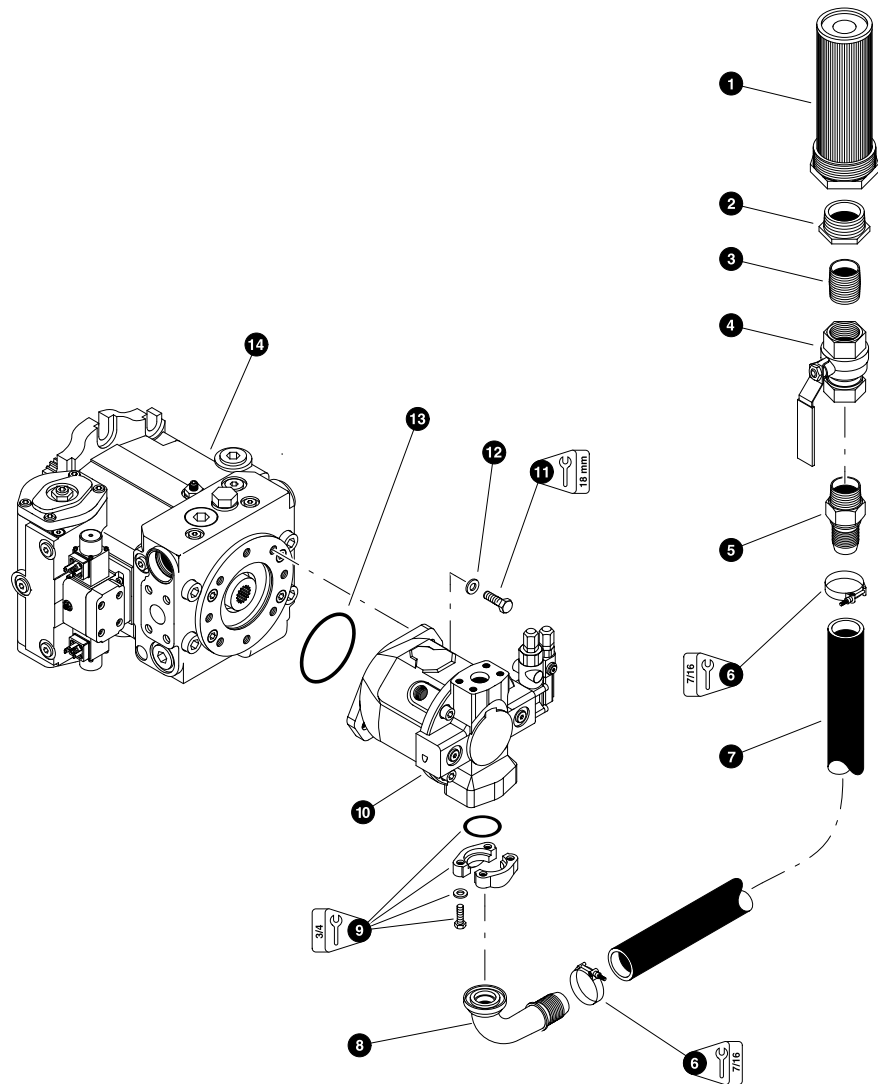


## ***Section OD-1***

---



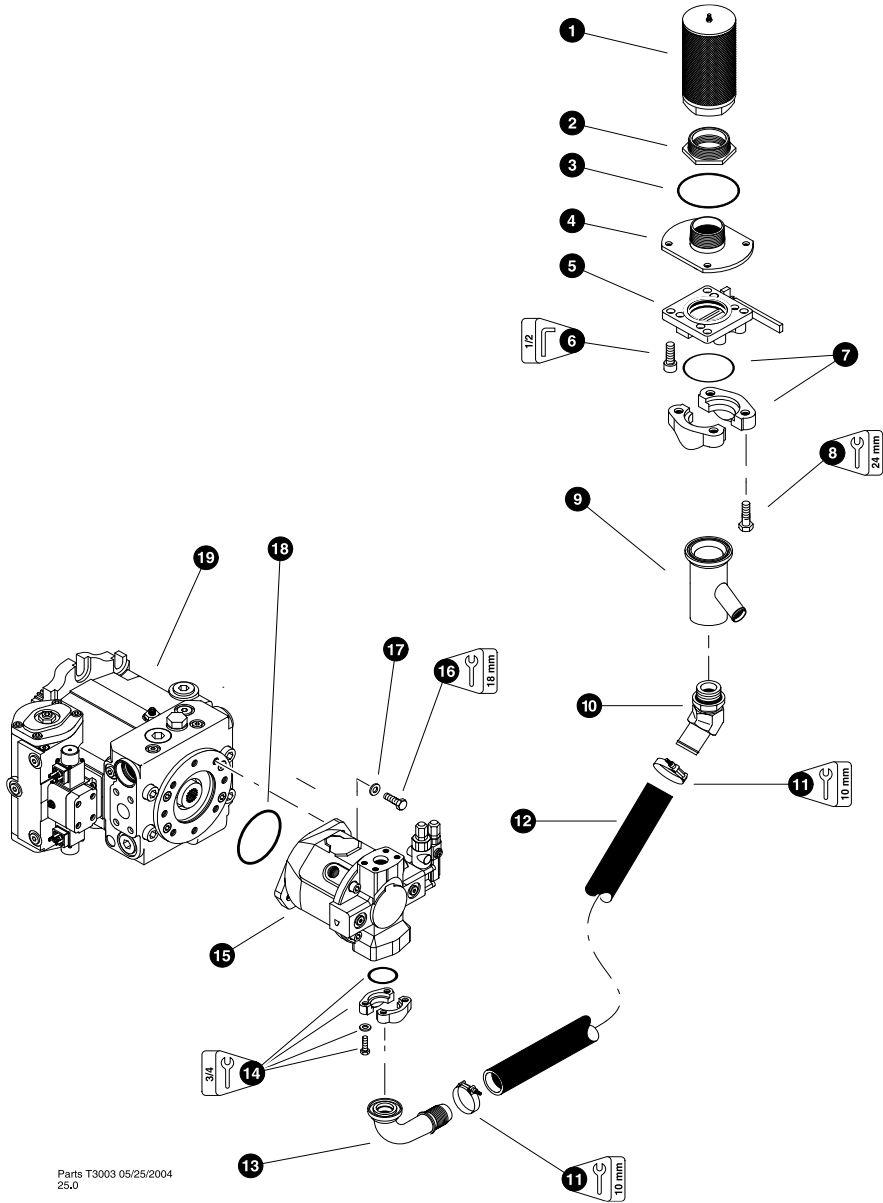
***Optional Disc Saw -  
Hydraulic Circuits***



**DISC SAW PUMP SUCTION LINE  
(machines built before 03/20/04)**

| REF | PART #   | QTY | DESCRIPTION   | SEE SECTION |
|-----|----------|-----|---|-------------|
| 1   | 15326-OD | 1   | FILTER, screen - 100 mesh suction                             |             |
| 2   | 17308-OD | 1   | BUSHING, black reducer - 2" x 1-1/2"                          |             |
| 3   | 15638-OD | 1   | NIPPLE, close - 1-1/2"  |             |
| 4   | 15325-OD | 1   | VALVE, ball - 1-1/2"  |             |
| 5   | 15640-OD | 1   | NIPPLE, king - 1-1/2"   |             |
| 6   | 15641-OD | 2   | CLAMP, strap band - 2"  |             |
| 7   | 50026-OD | 1   | HOSE, suction - 1-1/2" X 22"                                  |             |
| 8   | 15324-OD | 1   | NIPPLE, 90° split flange king - 1-1/2"                        |             |
| 9   | 15186-OD | 1   | <input type="checkbox"/> KIT, split flange - 1-1/2" (Code 61) |             |
|     | 15389-OD | 1   | <input type="checkbox"/> O-RING - 1-1/2" SF                   |             |
| 10  | REF.     | 1   | <input type="checkbox"/> DISC SAW PUMP . . . . .              | OD-2        |
| 11  | 18415-OD | 2   | BOLT - 12mm x 30mm  |             |
| 12  | 18735-OD | 2   | WASHER, flat - 12mm   |             |
| 13  | 17179-OD | 1   | O-RING, disc pump pilot                                       |             |
| 14  | REF.     | 1   | <input type="checkbox"/> WHEEL DRIVE PUMP . . . . .           | WD-2        |

Kit or Assembly - includes all items indented underneath.  
 See referenced page for component or assembly breakdown.

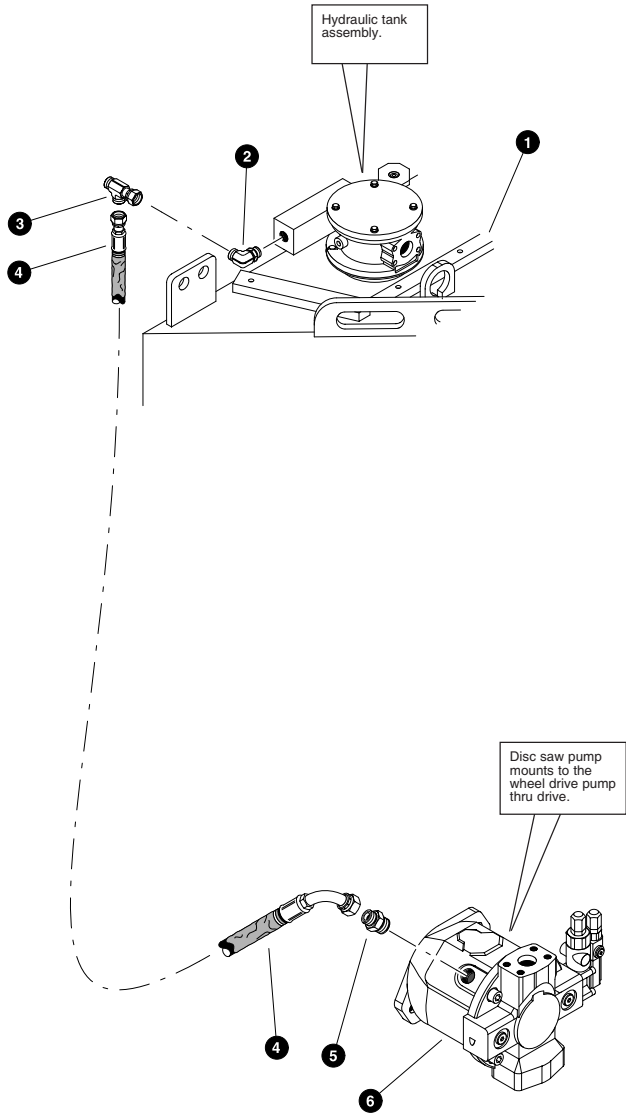


Parts T3003 05/25/2004  
25.0

**DISC SAW PUMP SUCTION LINE  
(machines built after 03/20/04)**

| REF | PART #   | QTY | DESCRIPTION  | SEE SECTION |
|-----|----------|-----|--|-------------|
| 1   | 15842-OD | 1   | FILTER, screen - implement suction                       |             |
| 2   | 16327-OD | 1   | BUSHING, black reducer - 3" x 2-1/2"                     |             |
| 3   | 15448-OD | 1   | O-RING   |             |
| 4   | REF.     | 1   | IMPLEMENT FILTER COVER (Installed from bottom) . . . . . | UP-3        |
| 5   | 22441-OD | 1   | VALVE, shut-off - 3" butterfly                           |             |
| 6   | 22560-OD | 4   | BOLT, flange - 1/2" x 2"                                 |             |
| 7   | 22639-OD | 1   | KIT, split flange - 3" (Code 61)                         |             |
|     | 18695-OD | 1   | O-RING - 3" SF   |             |
| 8   | 22561-OD | 4   | BOLT - 16mm x 40mm                                       |             |
| 9   | 42104-OD | 1   | TUBE, SUCTION - Y/24ORB (CHARGE/DISC)                    |             |
| 10  | 26317-OD | 1   | ADAPTER, SUCTION - DISC SAW 45 DEG                       |             |
| 11  | 15641-OD | 2   | CLAMP, strap band - 2"                                   |             |
| 12  |          |     |  |             |
| 13  | 15324-OD | 1   | NIPPLE, 90° split flange king - 1-1/2"                   |             |
| 14  | 15186-OD | 1   | KIT, split flange - 1-1/2" (Code 61)                     |             |
|     | 15389-OD | 1   | O-RING - 1-1/2" SF                                       |             |
| 15  | REF.     | 1   | DISC SAW PUMP . . . . .                                  | OD-2        |
| 16  | 18415-OD | 2   | BOLT - 12mm x 30mm                                       |             |
| 17  | 18735-OD | 2   | WASHER, flat - 12mm                                      |             |
| 18  | 17179-OD | 1   | O-RING, disc pump pilot                                  |             |
| 19  | REF.     | 1   | WHEEL DRIVE PUMP. . . . .                                | WD-2        |

- Kit or Assembly - includes all items indented underneath.
- See referenced page for component or assembly breakdown.

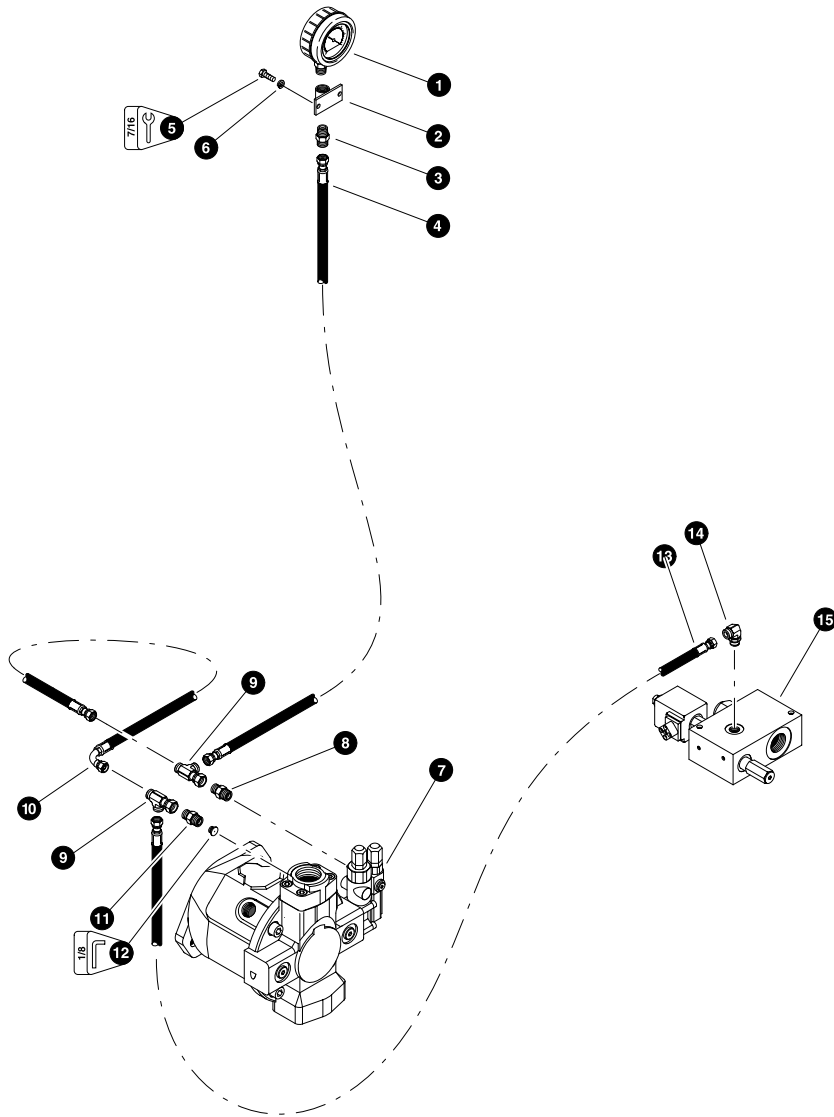


Parts 02352 08/15/2001  
25.00

**DISC SAW PUMP CASE DRAIN LINE**  
(Disc Saw Pump To Return Oil Manifold on Hydraulic Tank)

| REF | PART #   | QTY | DESCRIPTION   | SEE SECTION |
|-----|----------|-----|---|-------------|
| 1   | REF.     | 1   | HYDRAULIC TANK  | UP-3        |
| 2   | 16360-OD | 1   | ELBOW, 90 - FF1868T-0808S   |             |
| 3   | 15433-OD | 1   | TEE, FF2114T-0808S  |             |
| 4   | 50030-OD | 1   | HOSE ASSEMBLY - 2062-08-080S-0809 (Disc saw pump case drain port to hydraulic tank case filter) |             |
| 5   | 15115-OD | 1   | CONNECTOR, straight - FF1852T-0810S   |             |
| 6   | REF.     | 1   | DISC SAW PUMP   | OD-2        |

See referenced page for component or assembly breakdown.



Parts 02353 08/15/2001  
25.00

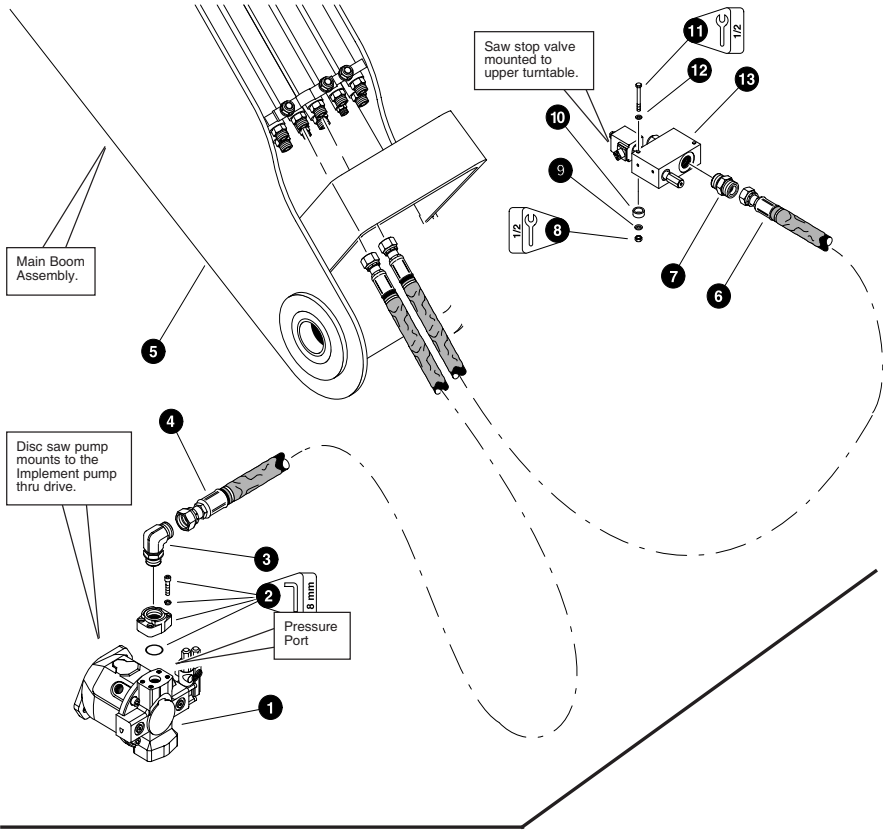
### DISC SAW PUMP COMPENSATOR & GAUGE LINES

| REF | PART #   | QTY | DESCRIPTION  | SEE SECTION |
|-----|----------|-----|--|-------------|
| 1   | 15343-OD | 1   | GAUGE, pressure - 6000 PSI   |             |
|     | 16038-OD | 1   | PROTECTOR, rubber gauge  |             |
| 2   | 12222-OD | 1   | BRACKET, disc saw gauge mount  |             |
| 3   | 15131-OD | 1   | CONNECTOR, straight - FF2031T-0404S  |             |
| 4   | 50028-OD | 1   | HOSE ASSEMBLY - 2140-04-040S-040S (Disc saw pump compensator tee to disc saw gauge in cab)           |             |
| 5   | 15604-OD | 2   | BOLT - 1/4" x 3/4"   |             |
| 6   | 10756-OD | 2   | WASHER, lock - 1/4"  |             |
| 7   | REF.     | 1   | DISC SAW PUMP  | OD-2        |
| 8   | 16541-OD | 1   | CONNECTOR, straight - FF1852T-0404S  |             |
| 9   | 15176-OD | 2   | TEE - FF2114T-0404S  |             |
| 10  | 50029-OD | 1   | HOSE ASSEMBLY - 2016-04-040S-0409 (Disc saw pump compensator tee to disc saw pump pressure port tee) |             |
| 11  | 22757-OD | 1   | CONNECTOR, straight w/0.040" orifice (SAE to ORS)  |             |
| 12  | 17253-OD | 1   | ORIFICE - 0.040"   |             |
| 13  | 50027-OD | 1   | HOSE ASSEMBLY - 2087-04-040S-040S (Disc saw pump pressure port tee to saw stop valve)                |             |
| 14  | 15133-OD | 1   | ELBOW, 90° - FF1868T-0406S   |             |
| 15  | REF.     | 1   | SAW STOP VALVE   | OD-2        |

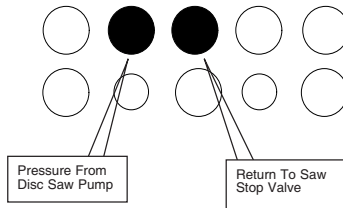
- See referenced page for component or assembly breakdown.
- Kit or Assembly - includes all items indented underneath.

Last Updated - 06/01/2004

Optional Disc Saw - Hydraulic Circuits



Main boom tubeline connections as viewed from rear of machine.



Parts 02354 03/15/2001  
15,00

TF 820 & TB 620 Parts Module OD-51088

OD-1-7

Optional Disc Saw - Hydraulic Circuits

Last Updated - 06/01/2004

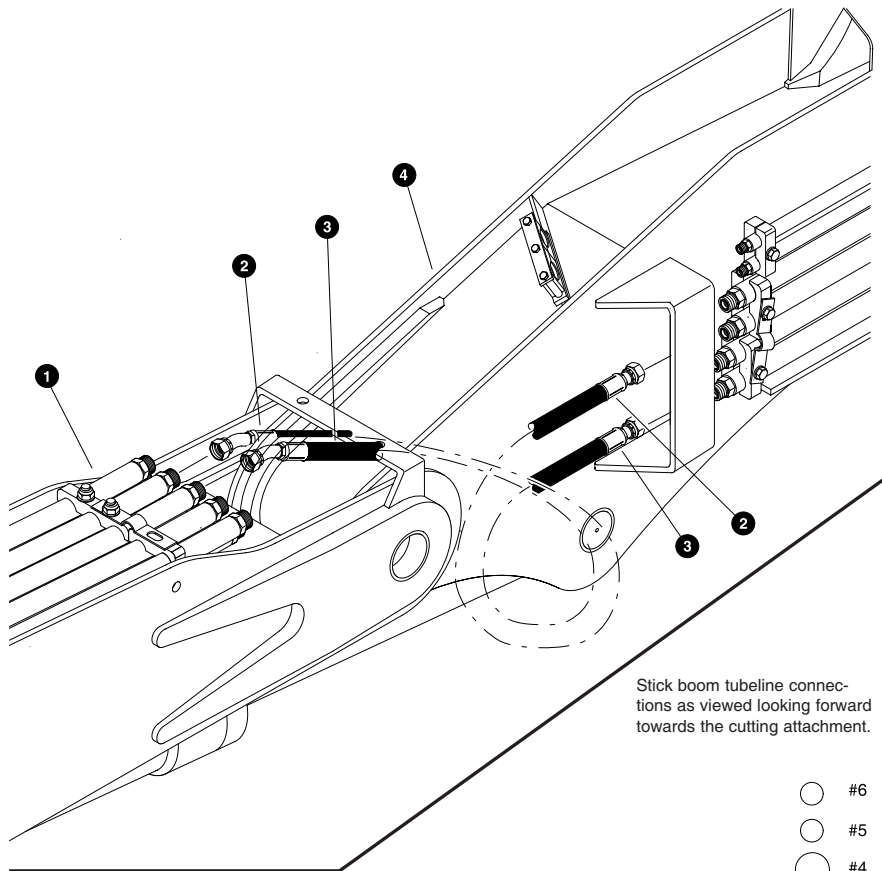
### DISC SAW PRESSURE & RETURN LINES TO ATTACHMENT (Disc Saw Pump & Saw Stop Valve To Main Boom Tubelines)

| REF | PART #   | QTY | DESCRIPTION   | SEE SECTION |
|-----|----------|-----|---|-------------|
| 1   | REF.     | 1   | DISC SAW PUMP .....   | OD-2        |
| 2   | 22758-OD | 1   | CONNECTOR, flange pad - 1" (Code 61)(Tapped for 1/4" SAE thread on side)                                      |             |
|     | 15377-OD | 1   | O-RING - 1" SF  |             |
| 3   | 15228-OD | 1   | ELBOW, 90° - FF1868T-0406S  |             |
| 4   | 50032-OD | 1   | HOSE ASSEMBLY - 4093-12-120S-120S-W (Disc saw pump pressure port to main boom lower middle cab-side tubeline) |             |
| 5   | REF.     | 1   | MAIN BOOM ASSEMBLY .....  | HB-1        |
| 6   | 50031-OD | 1   | HOSE ASSEMBLY - 4068-12-120S-120S-W (Main boom lower middle engine-side tubeline to saw stop valve)           |             |
| 7   | 15225-OD | 2   | CONNECTOR, straight - FF1852T-1616S   |             |
| 8   | 10812-OD | 2   | NUT, lock - 5/16"   |             |
| 9   | 15559-OD | 4   | WASHER, SAE flat - 5/16"  |             |
| 10  | 15619-OD | 1   | SPACER - 3/8"   |             |
| 11  | 15668-OD | 2   | BOLT - 5/16" x 4"   |             |
| 12  | REF.     | 1   | SAW STOP VALVE .....  | OD-2        |

- See referenced page for component or assembly breakdown.
- Kit or Assembly - includes all items indented underneath.

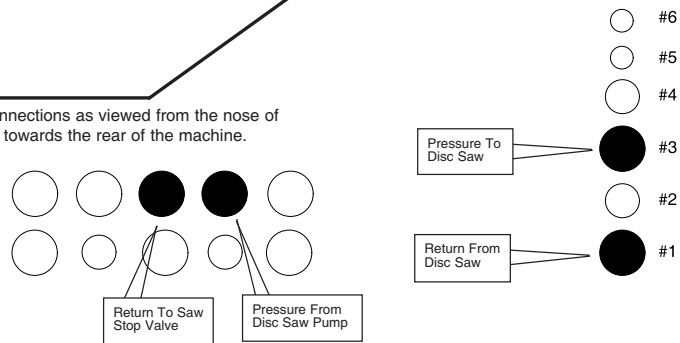
OD-1-8

TF 820 & TB 620 Parts Module OD-51088



Stick boom tubeline connections as viewed looking forward towards the cutting attachment.

Main boom tubeline connections as viewed from the nose of the main boom looking towards the rear of the machine.

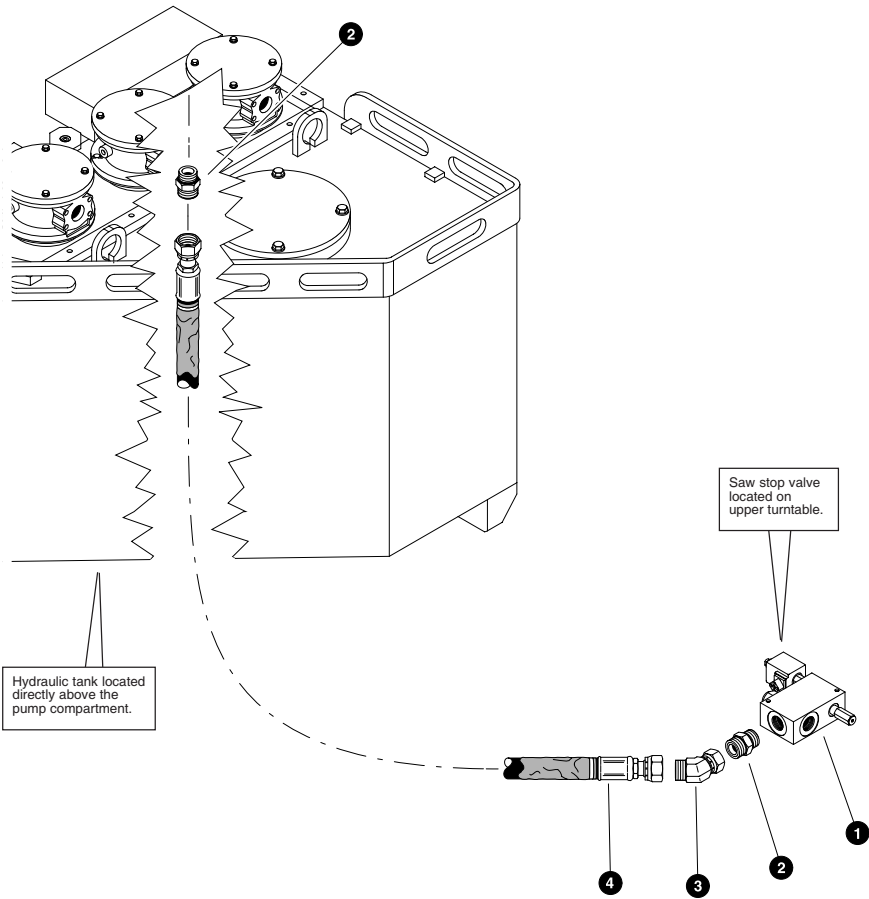


Parts 02355 09/16/2001  
18,75

### DISC SAW PRESSURE & RETURN LINES TO ATTACHMENT (Main Boom Tubelines To Stick Boom Tubelines)

| REF | PART #   | QTY | DESCRIPTION   | SEE SECTION |
|-----|----------|-----|---|-------------|
| 1   | REF.     | 1   | MAIN BOOM ASSEMBLY  | HB-1        |
| 2   | 50352-OD | 1   | HOSE ASSEMBLY - 4071-16 160S-1604 (Main boom lower middle engine-side tubeline to stick boom #4 tubeline) |             |
| 3   | 50352-OD | 1   | HOSE ASSEMBLY - 4071-16-160S-1604 (Main boom lower middle cab-side tubeline to stick boom #2 tubeline)    |             |
| 4   | REF.     | 1   | STICK BOOM ASSEMBLY   | HB-2        |

See referenced page for component or assembly breakdown.



Hydraulic tank located directly above the pump compartment.

Saw stop valve located on upper turntable.

**Note:** See Section AC-1 for the saw stop valve return line if the machine is equipped with the optional auxiliary oil cooler.

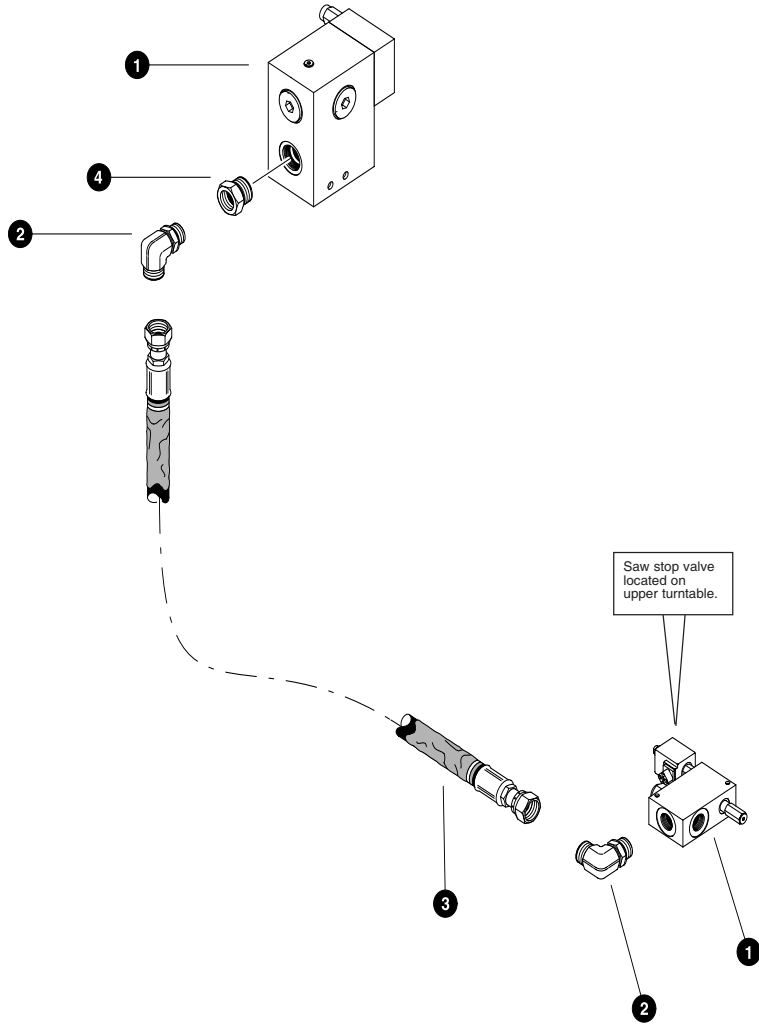
US & CANADA PATENTED IN EUROPE

**SAW STOP VALVE RETURN LINE  
(Without Optional Auxiliary Oil Cooler)  
(machines built before 6-01-04)**

| REF | PART #   | QTY | DESCRIPTION  | SEE SECTION |
|-----|----------|-----|--|-------------|
| 1   | REF.     | 1   | SAW STOP VALVE   | OD-2        |
| 2   | 15226-OD | 2   | CONNECTOR, straight - FF1852T-1216S  |             |
| 3   | 17688-OD | 1   | ELBOW, 45° - FF1852T-1212S   |             |
| 4   | 24724-OD | 1   | HOSE ASSEMBLY - 4090-12-120S-120S-W (Saw stop valve to cab-side return filter) |             |
| 5   | REF.     | 1   | HYDRAULIC TANK ASSEMBLY  | UP-3        |

See referenced page for component or assembly breakdown.





Parts T3013 06/05/2004  
18,75

### SAW STOP VALVE RETURN LINE

(machines built after 6-01-04)

| REF | PART #   | QTY | DESCRIPTION  | SEE SECTION |
|-----|----------|-----|--|-------------|
| 1   | REF.     | 1   | SAW STOP VALVE   | OD-2        |
| 2   | 15484-OD | 2   | ELBOW, 90 - 6801-16  |             |
| 3   | -OD      | 1   | HOSE ASSEMBLY - 2047-16-160S-160S (Saw stop valve to return logic block) |             |
| 4   | 17015-OD | 1   | BUSHING, REDUCER - 6410-20-16  |             |
| 5   | REF.     | 1   | RETURN LOGIC BLOCK   | HH-2        |

See referenced page for component or assembly breakdown.

THIS PAGE LEFT BLANK FOR NOTES

---

---

---

---

---

---

---

---

---

---

---

---

---

---

---

---

---

---

---

---

---

---

---

---

---

---

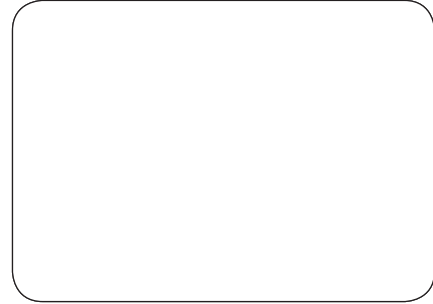
---

---

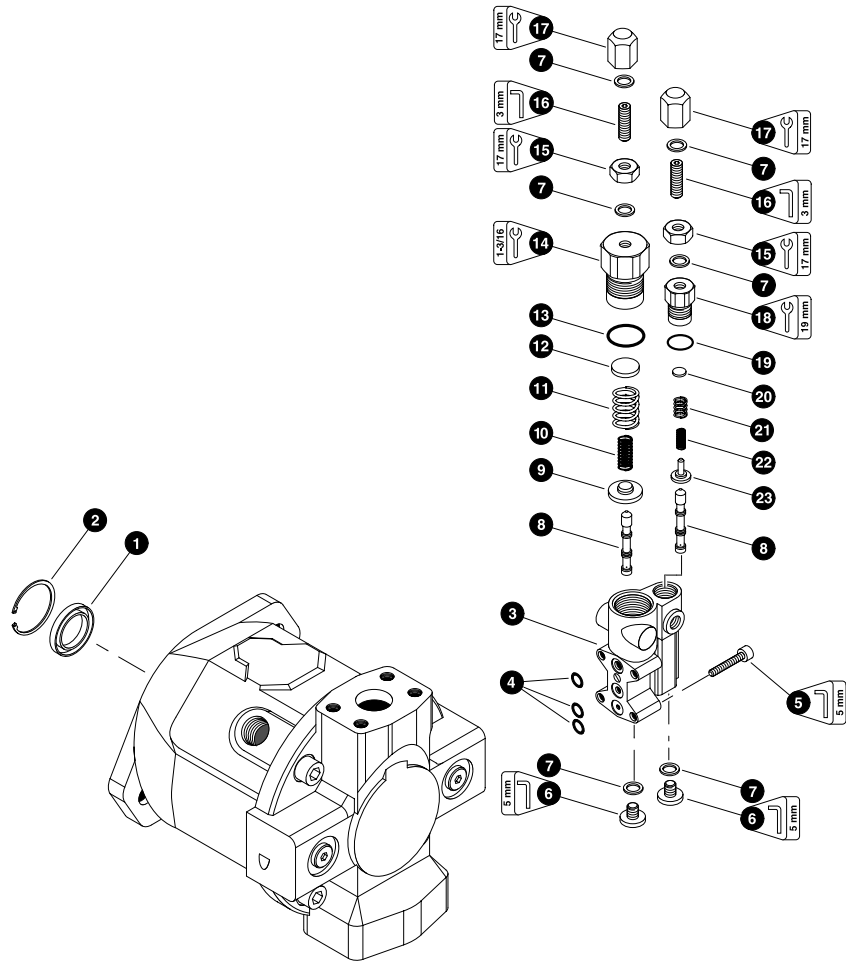
---

---

## ***Section OD-2***



***Optional Disc Saw -  
Hydraulic Pumps & Valves***

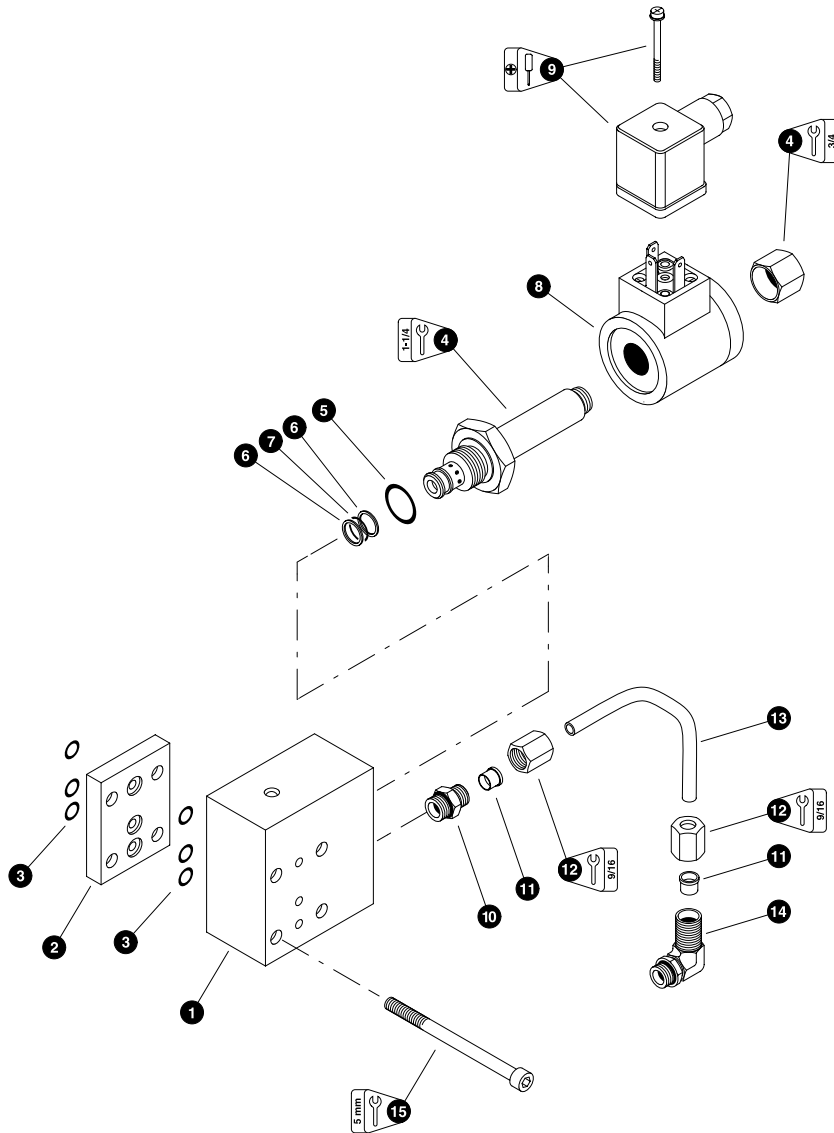


Parts 00867 01/01/2001  
50.00

### DISC SAW PUMP

| REF | PART #   | QTY |   | DESCRIPTION                      | SEE SECTION |
|-----|----------|-----|---|----------------------------------|-------------|
| --  | 15317-OD | 1   | ☐ | PUMP, disc saw                   |             |
| 1   | 15890-OD | 1   | ⊗ | SEAL, shaft                      |             |
| 2   | 21581-OD | 1   |   | RING, seal retaining             |             |
| --  | 15891-OD | 1   | ☐ | COMPENSATOR, pump control        |             |
| 3   | NSS      | 1   |   | HOUSING ASSEMBLY                 |             |
| 4   | 16856-OD | 3   | ⊗ | O-RING                           |             |
| 5   | 21582-OD | 4   |   | BOLT, compensator mounting       |             |
| 6   | 20339-OD | 2   |   | PLUG                             |             |
| 7   | 16855-OD | 6   | ⊗ | SEAL, ring                       |             |
| 8   | NSS      | 2   |   | SPOOL                            |             |
| 9   | NSS      | 1   |   | RETAINER, spring                 |             |
| 10  | NSS      | 1   |   | SPRING                           |             |
| 11  | NSS      | 1   |   | SPRING                           |             |
| 12  | NSS      | 1   |   | RETAINER, spring                 |             |
| 13  | NSS      | 1   | ⊗ | O-RING                           |             |
| 14  | NSS      | 1   |   | CAP, compensator                 |             |
| 15  | 17458-OD | 2   |   | NUT, jam - 8mm                   |             |
| 16  | 17459-OD | 2   |   | SCREW, adjustment - 8mm          |             |
| 17  | 17697-OD | 2   |   | NUT, acorn                       |             |
| 18  | NSS      | 1   |   | CAP, compensator                 |             |
| 19  | NSS      | 1   | ⊗ | O-RING                           |             |
| 20  | NSS      | 1   |   | RETAINER, spring                 |             |
| 21  | NSS      | 1   |   | SPRING                           |             |
| 22  | NSS      | 1   |   | SPRING                           |             |
| 23  | NSS      | 1   |   | RETAINER, spring                 |             |
| -   | 19757-OD | 1   |   | KIT, seal repair - disc saw pump |             |

- ☐ Kit or Assembly - includes all items indented underneath.
- ⊗ Included in seal repair kit Part # 16712-OD.

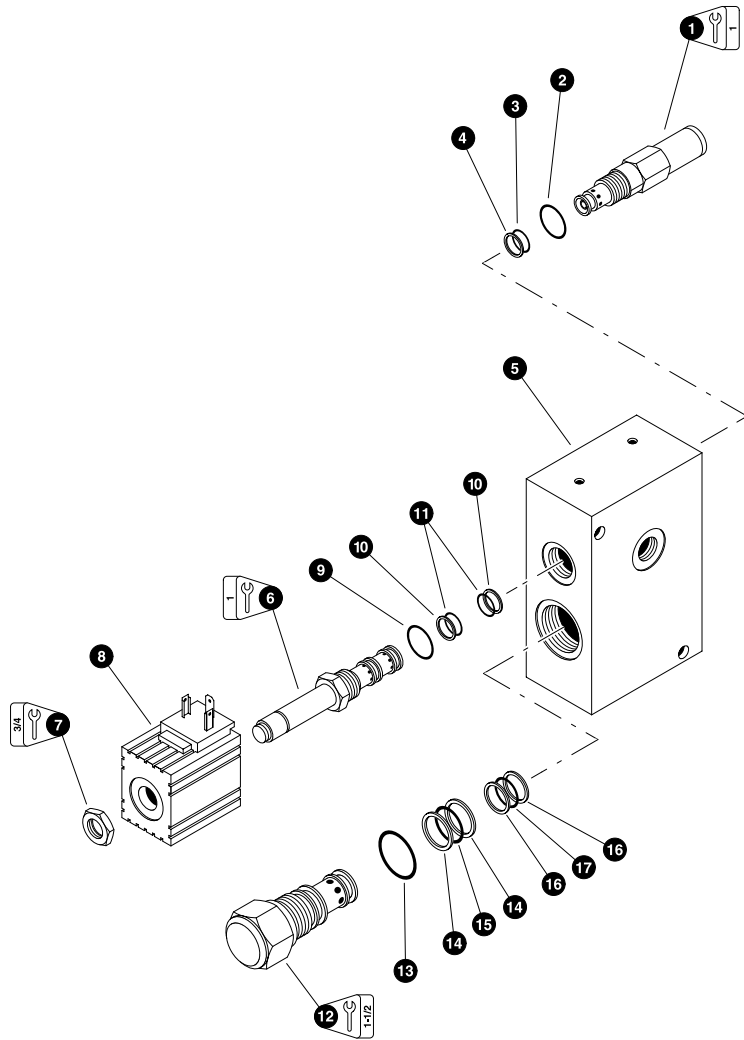


Parts 01325 01/01/2001  
75.00

### ELECTRIC COMPENSATOR CONTROL (Used With Disc Saw Pump)

| REF | PART #   | QTY | DESCRIPTION   | SEE SECTION |
|-----|----------|-----|---|-------------|
| -   | 19240-OD | 1   | □ CONTROL, electric compensator                               |             |
| 1   | 22595-OD | 1   | BLOCK   |             |
| 2   | 22596-OD | 1   | PLATE, block  |             |
| 3   | 21604-OD | 6   | O-RING  |             |
| 4   | 22597-OD | 1   | □ CARTRIDGE, solenoid <i>(Includes nut)</i>                   |             |
| 5   | NSS      | 1   | ⊗ O-RING, body  |             |
| 6   | NSS      | 2   | ⊗ RING, back-up - chamber                                     |             |
| 7   | NSS      | 1   | ⊗ O-RING, chamber   |             |
| 8   | 22445-OD | 1   | COIL, solenoid - 24V  |             |
| 9   | 17145-OD | 1   | CONNECTOR, electrical - Hirschmann <i>(Includes hardware)</i> |             |
| 10  | 22599-OD | 1   | CONNECTOR, tube   |             |
| 11  | 22600-OD | 2   | FERRULE   |             |
| 12  | 22601-OD | 2   | NUT, tube   |             |
| 13  | 22602-OD | 1   | TUBE, hydraulic   |             |
| 14  | 22604-OD | 1   | ELBOW, 90° tube   |             |
| 15  | 22603-OD | 4   | BOLT, allen head  |             |
| -   | 22598-OD | 1   | KIT, seal repair - solenoid cartridge                         |             |

- Kit or Assembly - includes all items indented underneath.
- ⊗ Included in seal repair kit Part # 22598-OD.

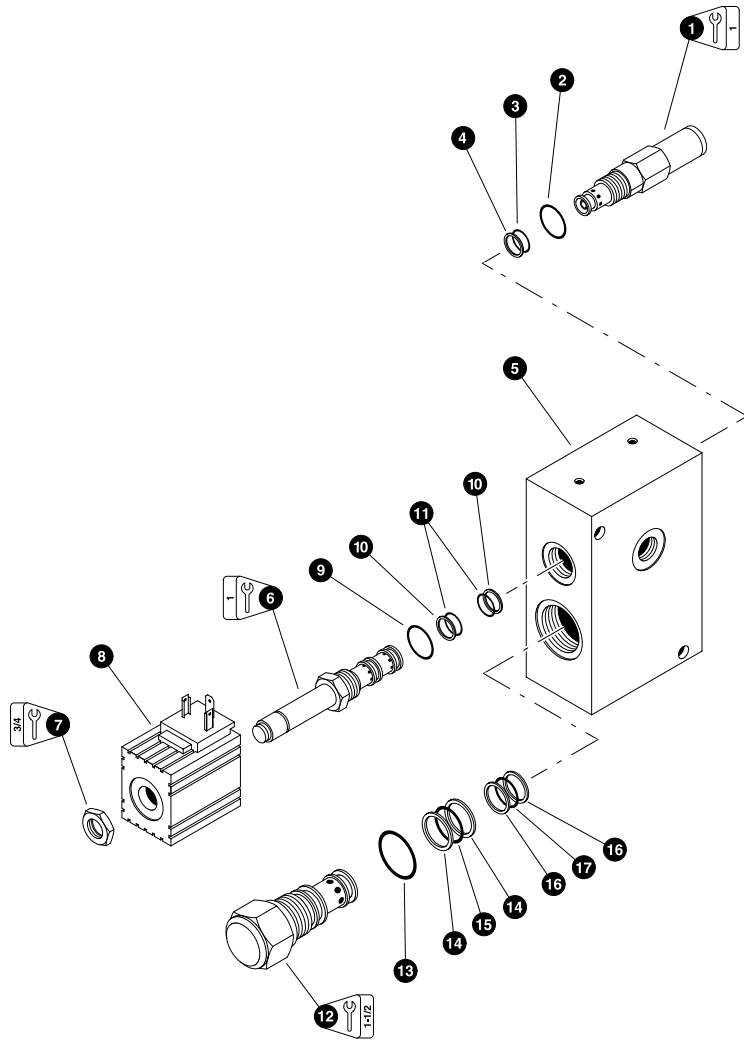


Parts 01033 01/01/2001  
62.50

**DISC SAW STOP VALVE**  
**(Used With Disc Saw Pump)**  
**(Old Style Stop Valve)**

| REF | PART #     | QTY | DESCRIPTION   | SEE SECTION |
|-----|------------|-----|---|-------------|
| -   | 16606-OD   | 1   | ☐ VALVE, saw stop (12 volt) (for 24 volt order coil #22554 below) |             |
| 1   | 22037-OD   | 1   | ☐ CARTRIDGE, relief valve   |             |
| 2   | NSS        | 1   | ⊗ O-RING, body  |             |
| 3   | NSS        | 1   | ⊗ O-RING, chamber   |             |
| 4   | NSS        | 1   | ⊗ RING, back-up - chamber   |             |
| 5   | NSS        | 1   | HOUSING, valve body   |             |
| 6   | 22038-OD   | 1   | ☐ CARTRIDGE, saw stop solenoid                                    |             |
| 7   | NSS        | 1   | NUT   |             |
| 8   | 22554-OD   | 1   | COIL, SOLENOID - SS/PB/LS (24V)(PARKER)                           |             |
| 9   | NSS        | 1   | ◆ O-RING, body  |             |
| 10  | NSS        | 2   | ◆ RING, back-up - chamber   |             |
| 11  | NSS        | 2   | ◆ O-RING, chamber   |             |
| 12  | 16029-OD   | 1   | ☐ CARTRIDGE, flow stop valve                                      |             |
| 13  | NSS        | 1   | ■ O-RING, body  |             |
| 14  | NSS        | 2   | ■ RING, back-up - chamber (Large)                                 |             |
| 15  | NSS        | 1   | ■ O-RING, chamber (Large)   |             |
| 16  | NSS        | 2   | ■ RING, back-up - chamber (Small)                                 |             |
| 17  | NSS        | 1   | ■ O-RING, chamber (Small)   |             |
| -   | 22040-OD   | 1   | ☐ KIT, seal repair - complete saw stop valve                      |             |
| -   | 22041-OD   | 1   | ○ KIT, seal repair - saw stop solenoid cartridge                  |             |
| -   | 16868-2-OD | 1   | ○ KIT, seal repair - flow stop valve cartridge                    |             |
| -   | 22042-OD   | 1   | ○ KIT, seal repair - relief valve cartridge                       |             |

- ☐ Kit or Assembly - includes all items indented underneath.
- ⊗ Included in seal repair kit Part # 22041-OD.
- ◆ Included in seal repair kit Part # 16868-2-OD.
- Included in seal repair kit Part # 22042-OD.
- Included in seal repair kit Part # 22040-OD.



Parts 01033 01/01/2001  
62.50

**DISC SAW STOP VALVE**  
**(Used With Disc Saw Pump)**  
**(New Style Stop Valve)**  
**(machines built after 6/01/04)**

| REF | PART #   | QTY |   | DESCRIPTION   | SEE SECTION |
|-----|----------|-----|---|---|-------------|
| -   | 23728-OD | 1   | ☐ | VALVE, SAW STOP - 24 Volt                                   |             |
| 1   | -OD      | 1   | ☐ | CARTRIDGE, relief valve (RV08-20A-0-N-5 Hydraforce)         |             |
| 2   | NSS      | 1   | ⊗ | O-RING, body  |             |
| 3   | NSS      | 1   | ⊗ | O-RING, chamber   |             |
| 4   | NSS      | 1   | ⊗ | RING, back-up - chamber                                     |             |
| 5   | NSS      | 1   |   | HOUSING, valve body (204010901-40 M&W)                      |             |
| 6   | -OD      | 1   | ☐ | CARTRIDGE, saw stop solenoid (SV08-31M-0-N-24DG Hydraforce) |             |
| 7   | NSS      | 1   |   | NUT   |             |
| 8   | -OD      | 1   |   | COIL, solenoid - 24 Volt (6306024 Hydraforce)               |             |
| 9   | NSS      | 1   | ◆ | O-RING, body  |             |
| 10  | NSS      | 2   | ◆ | RING, back-up - chamber                                     |             |
| 11  | NSS      | 2   | ◆ | O-RING, chamber   |             |
| 12  | -OD      | 1   | ☐ | CARTRIDGE, logic valve (EV16-S34-0-N-40 Hydraforce)         |             |
| 13  | NSS      | 1   | ■ | O-RING, body  |             |
| 14  | NSS      | 2   | ■ | RING, back-up - chamber (Large)                             |             |
| 15  | NSS      | 1   | ■ | O-RING, chamber (Large)                                     |             |
| 16  | NSS      | 2   | ■ | RING, back-up - chamber (Small)                             |             |
| 17  | NSS      | 1   | ■ | O-RING, chamber (Small)                                     |             |
| -   | -OD      | 1   | ☐ | KIT, seal repair - complete saw stop valve                  |             |
| -   | -OD      | 1   | ○ | KIT, seal repair - saw stop solenoid cartridge (SK08-3X-MM) |             |
| -   | -OD      | 1   | ○ | KIT, seal repair - logic valve (SK16-3X-MM)                 |             |
| -   | -OD      | 1   | ○ | KIT, seal repair - relief valve cartridge (SK08-2X-B)       |             |

- ☐ Kit or Assembly - includes all items indented underneath.
- ⊗ Included in seal repair kit Part # -OD.(SK08-2X-B)
- ◆ Included in seal repair kit Part # -OD.(SK08-3X-MM)
- Included in seal repair kit Part # -OD.(SK16-3X-MM)

**THIS PAGE LEFT BLANK FOR NOTES**

---

---

---

---

---

---

---

---

---

---

---

---

---

---

---

---

---

---

---

---

---

---

---

---

---

---