

TIMBERPRO TL775D Leveling



L9 Engine Provides:

- 365 Hp (272 kW)
- 1151 lb-ft Torque
- Increased fuel economy and longer maintenance intervals
- Single-Module™ aftertreatment system Certified to Stage V

- ❑ Cummins L9 Engine
- ❑ Dual Hydrostatic Drive System
- ❑ Dual Motor Hydrostatic Slewing System
- ❑ IQAN 10" Touch Screen Control System
- ❑ Digital Climate Control System
- ❑ Larger Windows for Increased Visibility
- ❑ High Output LED Lighting
- ❑ Handsfree Stereo System
- ❑ Best in Class Serviceability

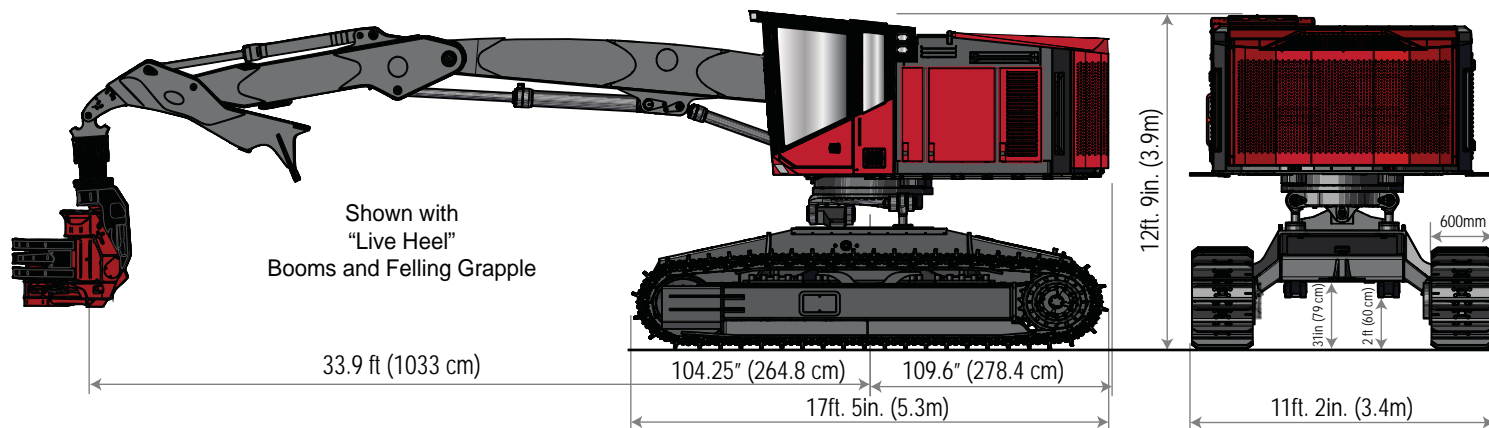


The TimberPro TL775D is the largest of the D-Series purpose built track machines. Designed exclusively for the forest industry the TL775D was built to handle extreme terrain and severe climates.

The leveling undercarriage of the TL775D has long heavy duty track frames and a wide stance making it extremely robust and very stable.

Equipped with a powerful Cummins L9 engine, a technologically advanced IQAN MD4 touch screen control system, dual motor hydrostatic slewing system and a dedicated dual hydrostatic track drive system the TL775D is the perfect balance of power, performance and productivity.

TL775D - Shovel Logger



TimberPro Inc reserves the right to change specifications without notice or obligation. Product illustrations may be equipped with non-standard equipment.

Engine:

Cummins L9 Series Engine - 365HP
 Single Module DOC/DPF/SCR
 Max HP - 365 hp (272 kw)
 Peak Torque - 1151 lb.ft. (1561 nm) @ 1400
 Fuel Tank - 250 gallons (946 Liters)

Control System:

IQAN MD4 HD control system

- 10" touch screen
- Engine Management
- Troubleshooting Diagnostics
- Over and Under Temperature Protection
- Auto-Accumulator Arm Feature
- Auto-Leveling Feature

Hydraulic System:

Implement Pump - 175cc Variable Disp Piston
 Swing Pump - Dedicated 90cc Hydrostatic
 Track Drive - Dedicated 90cc Dual Hydrostatic
 Disc Saw Pump - Dedicated 60cc Piston
 Charge Pump - Gear Pump 50cc
 Valve - Rexroth M7 / M4
 Electric hyd oil fill pump

Upper Turntable Swing:

Gearboxes - Dual Rexroth GFB17 (32.47:1)
 Bearing - Dual Ball / External Tooth
 Swing Motors - Dual Rexroth Bent Axis - 56cc
 Hydrostatic energy recovery system
 Swing Speed - 5.6 RPM
 Swing Torque - 113,811 Ft/LBS (154,307 Nm)
 Swing Brake - Wet Multi-Disc (95,000 ft-lbs)
 Continuous Rotation Swing

Machine Weight:

Base Machine: 96,200 lbs (43,636 kg)
 Ground Pressure: 600mm - 10.7 psi (standard)
 700mm - 9.2 psi (optional)
 800mm - 8.5 psi (optional)

(approximate "woods ready" operating weight without attachment)

Leveling System:

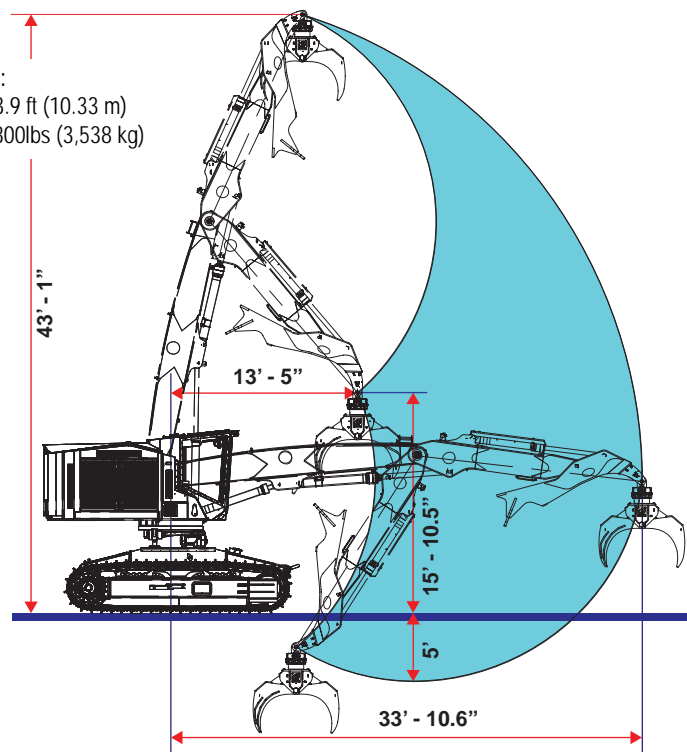
Front - 22 Degrees
 Rear - 8 Degrees
 Side - 20 Degrees
 (One Touch) Auto-Leveling

Boom Performance:

Maximum Reach (Pin Point) - 33.9 ft (10.33 m)
 Lift Capacity @ Max Reach - 7,800lbs (3,538 kg)

Undercarriage:

Caterpillar 330 Frame w/345 Recoil Spring
 Track Pitch - 8.5 Inch Pitch
 Track Pads - 51 - D7G HD (600, 700 or 800mm)
 Track Rollers - 10 (8 - Double and 2 - Single)
 Final Drive - Rexroth GFT 8190 - 121.1:1 Ratio
 Drive Motors - 170cc Auto Shift Rexroth
 Tractive Effort - 108,745 lbs (484 kN)
 Tractive Effort to Weight ratio - 1.2:1
 Travel Speed - 0 to 3.5 mph
 Winch Assist / Tethering Hitch (Standard)



TimberPro Inc.
 1407 Industrial Dr.
 Shawano WI 54166 USA
 www.timberpro.com

TIMBERPRO