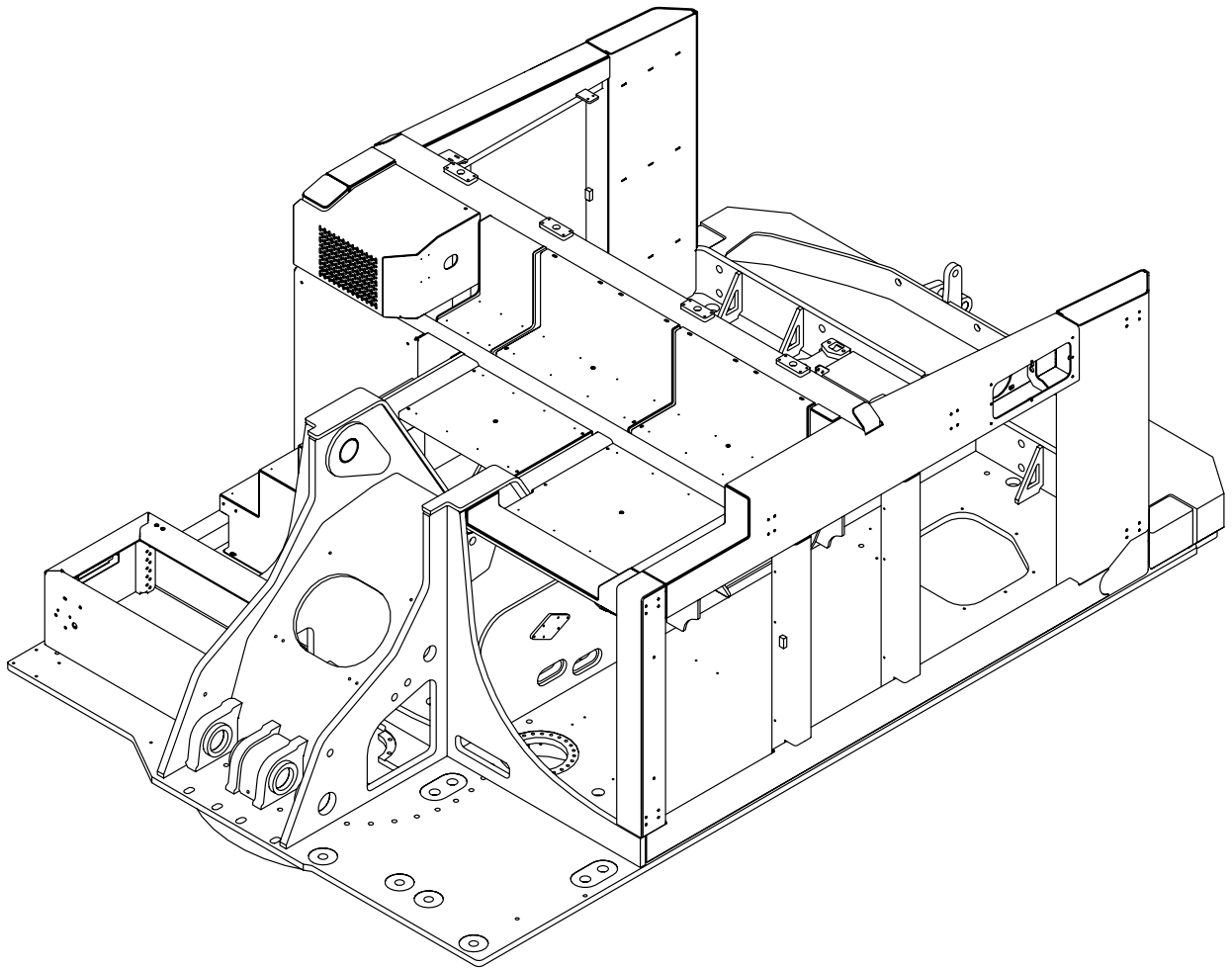


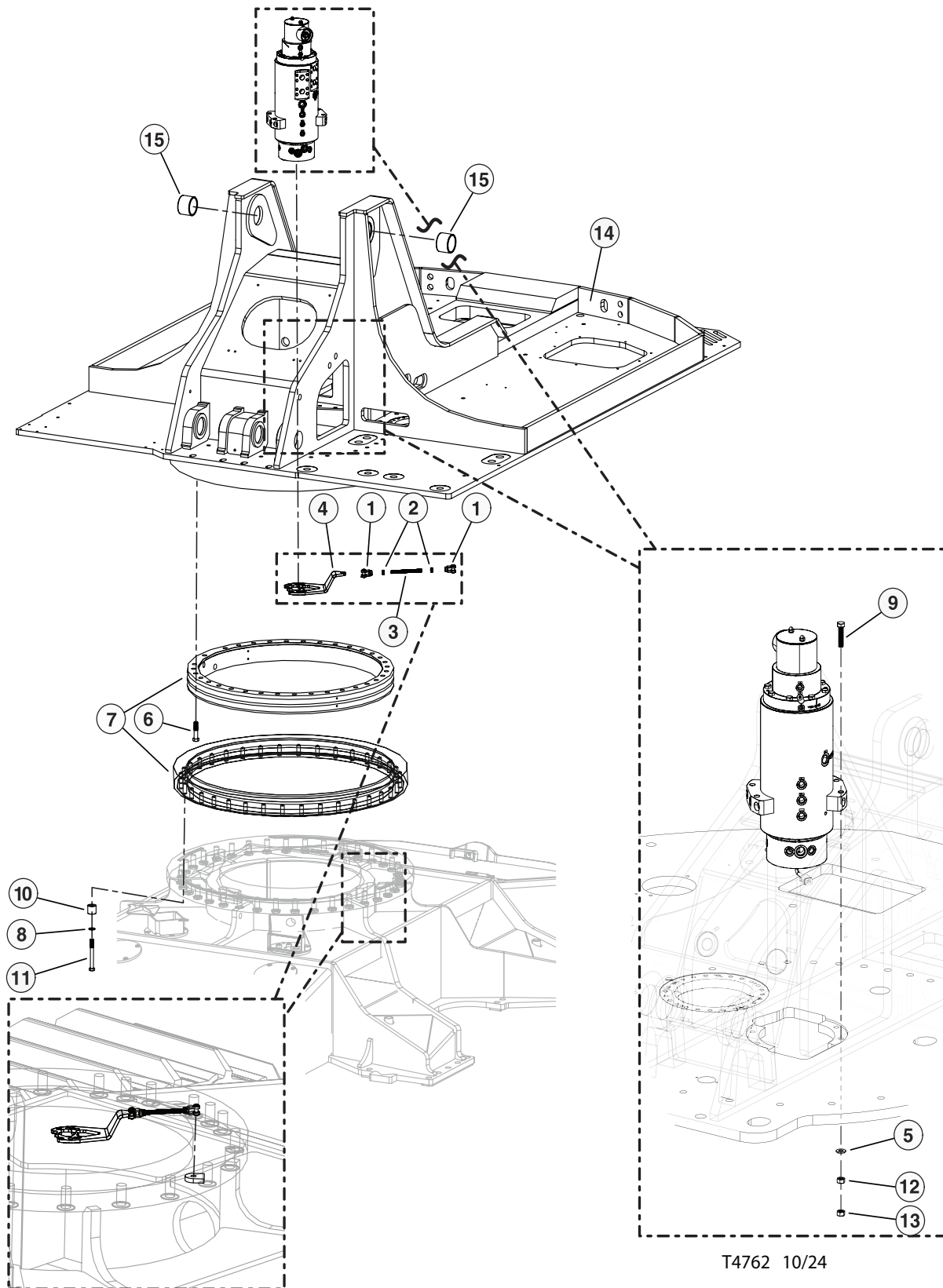
SECTION UP-1

UPPER TURNTABLE STRUCTURAL COMPONENTS, DOORS, AND COVERS



UPPER TURNTABLE

ROTARY MANIFOLD AND SWING BEARING INSTALLATION



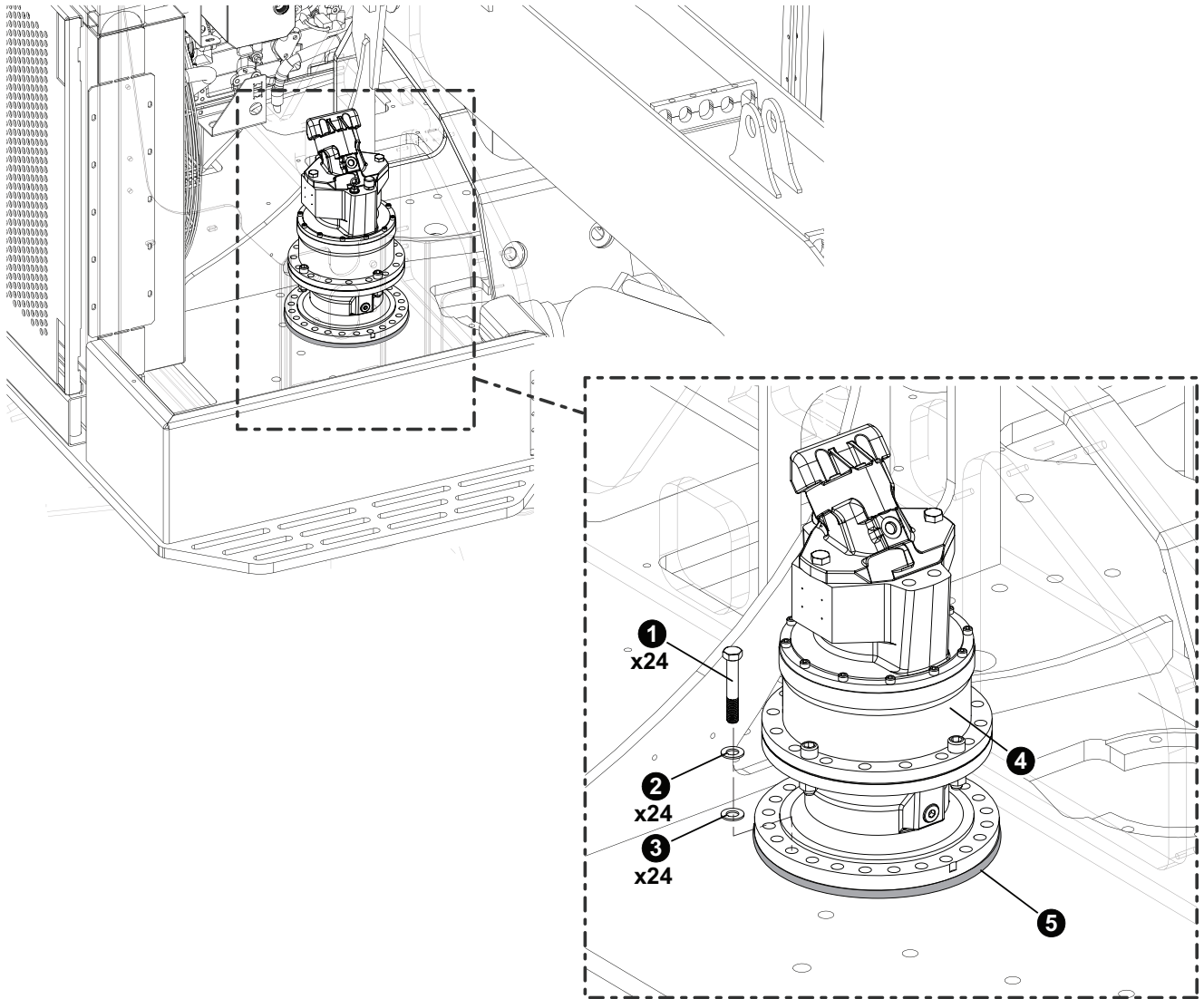
UPPER TURNTABLE

ROTARY MANIFOLD AND SWING BEARING INSTALLATION

REF	PART #	QTY	DESCRIPTION	SEE SECTION
1	52381	2	YOKE, ROTARY MANIFOLD 5/8 X 5/8 (Assembly includes pin)	
2	52395	2	NUT, JAM .63-18NF HEX (PLATED)	
3	52394	1	STUD, 5/8"-18NF X 7.5 LG (ZINC PLATED)	
4	60506	1	BRACKET, SWIVEL LOCK ARM - T/M TAIL	
5	23210	4	WASHER, SAE FLAT - .625" (EXTRA THICK)	
6	51690	34	BOLT, ALLEN HEAD - 1" X 4.5" (SWING BRG)	
7	58591	1	BEARING, SWING - DOUBLE BALL LOG LOADER	
8	18532	36	WASHER, 1" SAE	
9	10838	4	BOLT - .625" X 5"	
10	53143	36	SPACER, BOLT - LOWER TURNTABLE 1.50 LG	
11	18535	36	BOLT - 1" X 5"	
12	17515	4	NUT, HEX - .625"	
13	10816	4	NUT, LOCK - .625"	
14	66005	1	WELDMENT, LOG LOADER UPPER TURNTABLE	
15	62488	2	BUSHING, 4.5" X 4.0" X 3.19 LG - MAIN BOOM	

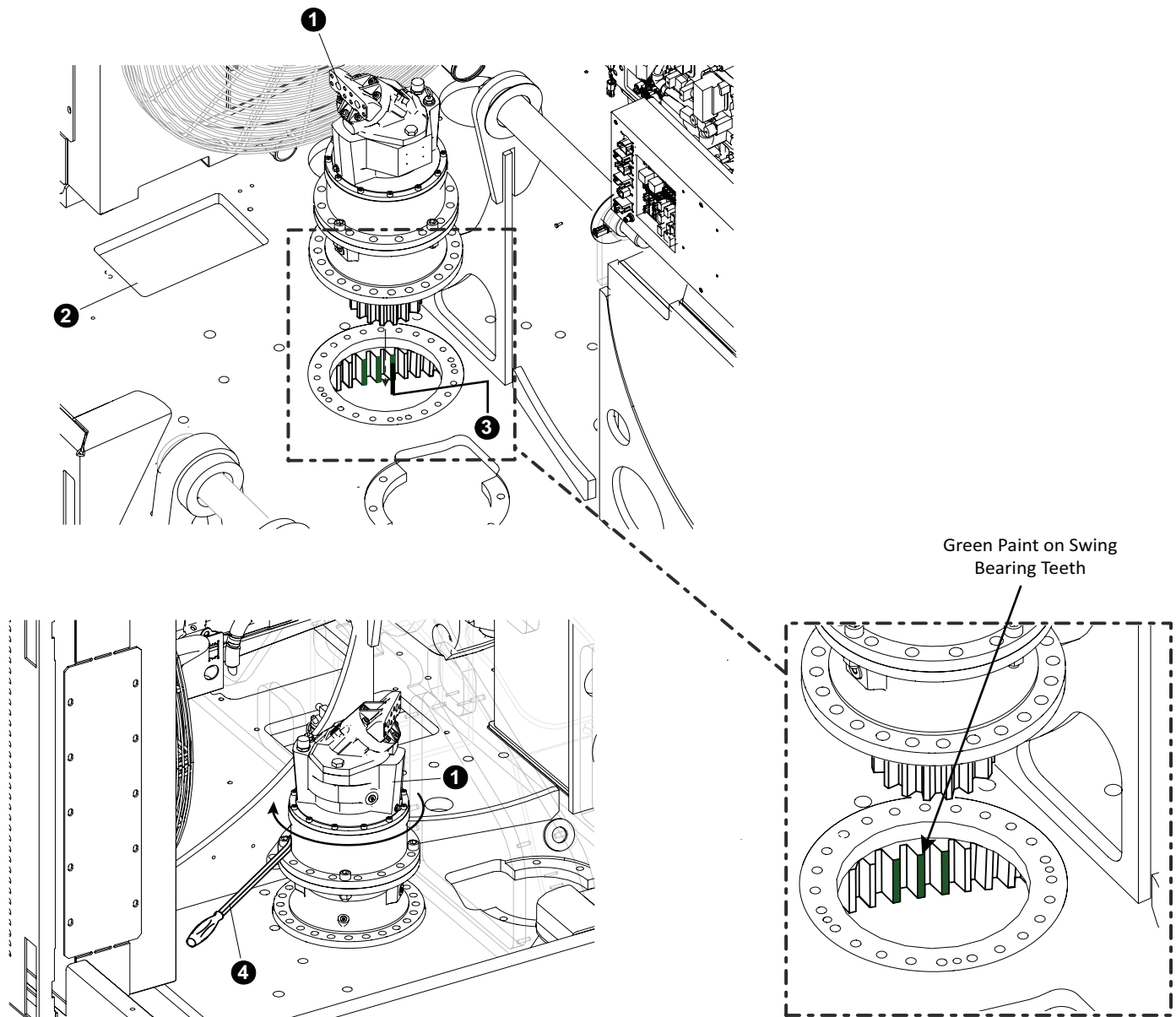
UPPER TURNTABLE

(SWING MOTOR INSTALLATION)



REF	PART #	QTY	DESCRIPTION	SEE SECTION
1	57870	24 (per motor)	BOLT - .625" X 2.75" (Torque to 230 ft.lbs (310 Nm))	
2	57871	24 (per motor)	WASHER, SURELOK - 5/8" (SWING GEARBOX)	
3	23210	24 (per motor)	WASHER, SAE FLAT - .625" (EXTRA THICK)	
4	57213	2	MOTOR, SWING - L&S 32.5:1 / 56CC	
5	54026	1	RING, SPACER SWING GEARBOX	

UPPER TURNTABLE (SWING MOTOR INSTALLATION)



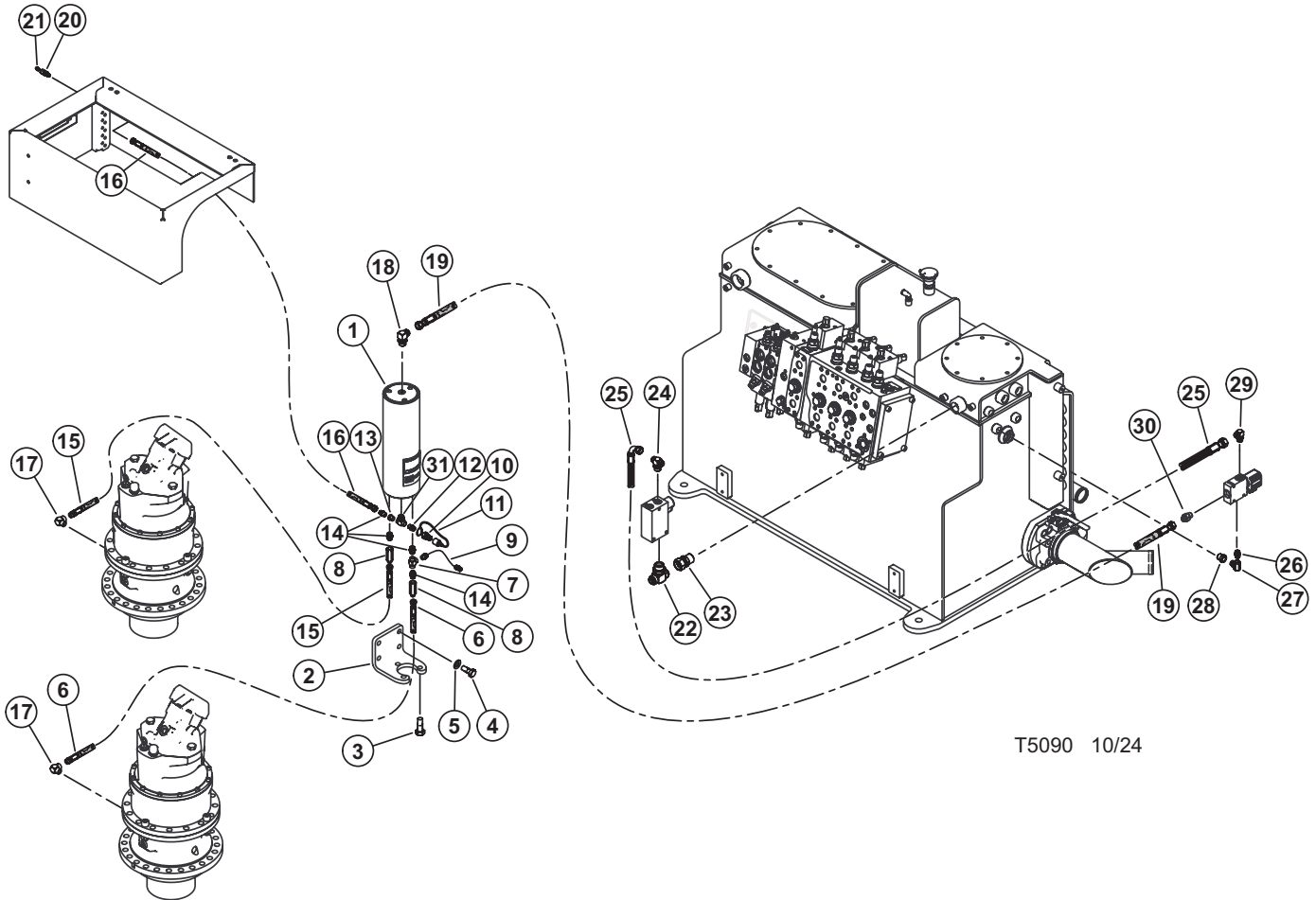
INSTALLING THE ECCENTRIC SWING MOTOR:

IMPORTANT:

1. Locate the green paint on the swing bearing teeth (3) by rotating the swing bearing until the green teeth are centered below the upper turntable (2).
2. Using a lifting device, lower the Eccentric swing motor (1) onto the upper turntable (2).
 - a. Note: It may be necessary to lift the swing motor back out of position and rotate the motor until the motor fits snug with the upper turntable.
2. Once the swing motor is in place, using a pry bar (4), turn the motor clockwise until tight.
3. Additional adjustments may be required. Use the closest set of bolt holes to fasten the motor to the upper turntable.

UPPER TURNTABLE

(AUTO GREASE SYSTEM INSTALLATION)(SWING DRIVE GEARCASE BEARING)



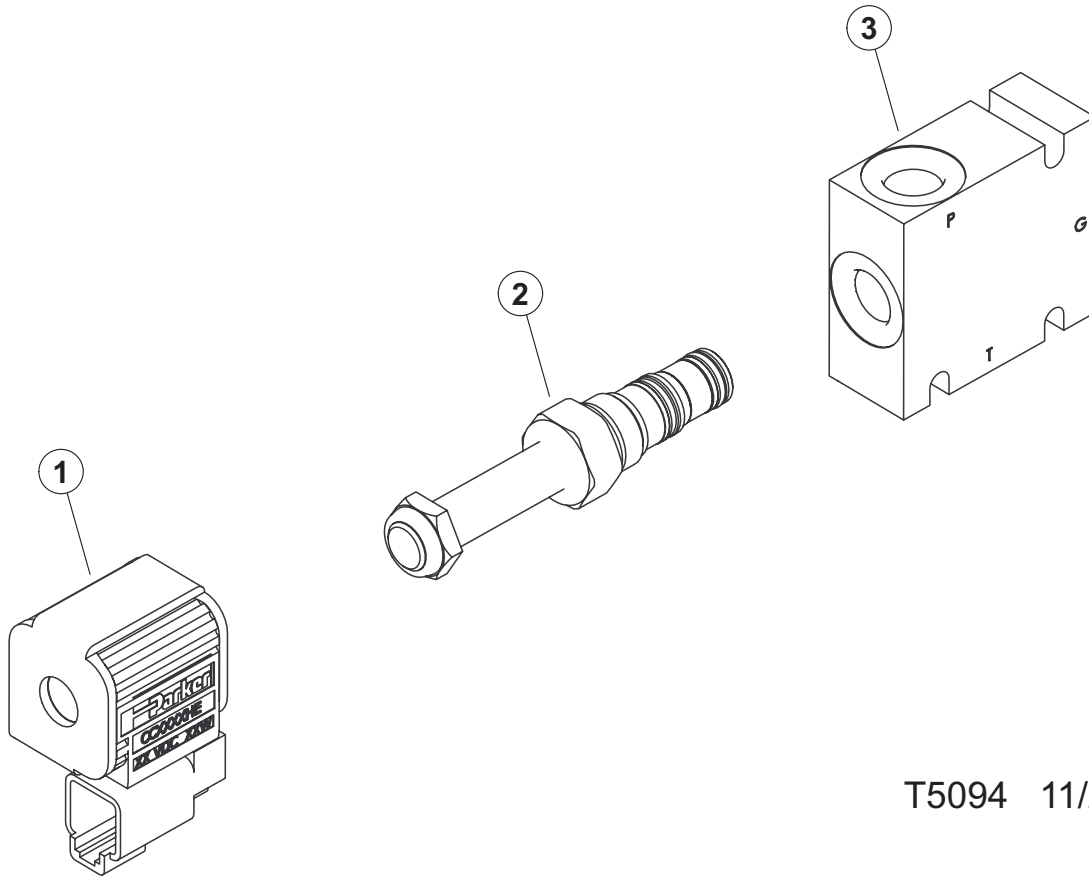
T5090 10/24

UPPER TURNTABLE

(AUTO GREASE SYSTEM INSTALLATION)(SWING DRIVE GEARCASE BEARING)

REF	PART #	QTY	DESCRIPTION	SEE SECTION
1	57303	1	ACCUMULATOR, GREASE SYSTEM	
2	48344	1	PLATE, GREASE TUBE MOUNT	
3	(CALL)	2	BOLT - M12-1.75 X 30MM	
4	10402	2	BOLT - .375" X 1.25"	
5	15528	2	WASHER, SAE FLAT - .375"	
6	(See Description)	1	HOSE ASSY. - (PART # HLBD115 02-02PS-04JS-W) - Grease acc to right swing	
7	55633	1	FITTING, TEE - MALE RUN #6 - 6 AOG5JG5-S	
8	57498	2	VALVE, CHECK - ORIFICE GREASE SYSTEM	
9	57596	1	TRANSDUCER, PRESSURE - GREASE SYSTEM	
10	17307M	1	QUICK DISCONNECT - .5" (MALE)	
11	17323F	1	COVER, DUST - QUICK DISCONNECT (FEMALE)17307M	
12	53107	1	CONNECTOR, STR - 1/2 X 3/8 FF-S	
13	16294	1	BUSHING, REDUCER - 6410-6-4	
14	18034	2	CONNECTOR, STR - FF1852T-0606S	
15	(See Description)	1	HOSE ASSY. - (PART # HLBD17 02-02PS-04JS-W) - Grease acc to left swing	
16	(See Description)	1	HOSE ASSY. - (PART # HLBD130 02-02PS-04JS-W) - Grease acc fill	
17	22281	2	ELBOW, 90 - 5546132	
18	57586	1	ELBOW, 90 4-5 GREASE ACCUMULATOR	
19	(See Description)	1	HOSE ASSY - (PART # 387TC102 04-04OS-04OS-W) - Greaser valve to acc	
20	15658	1	CONNECTOR, STR BULKHEAD - 2239-2-4S	
21	10704	1	GREASE ZERT - STR	
22	55622	1	TEE, BRANCH - STRAIGHT THREAD #16	
23	15497	1	CONNECTOR, STR - 16 F5OX-S	
24	55701	1	FITTING, TEE - 6 R5OX-S	
25	(See Description)	1	HOSE ASSY - (PART # 387TC16.5 06-06JS-06J9-W) - Grease valve to charge	
26	18034	2	CONNECTOR, STR - FF1852T-0606S	
27	55633	1	FITTING, TEE - MALE RUN #6 - 6 AOG5JG5-S	
28	22909	1	BUSHING, REDUCER - 6410-8-6	
29	15480	1	ELBOW, 90 - 6801-6	
30	54809	1	CONNECTOR, STR - 4 JIC x -6 ORB	
31	55633	1	FITTING, TEE - MALE RUN #6 - 6 AOG5JG5-S	

UPPER TURNTABLE AUTOGREASE MANIFOLD



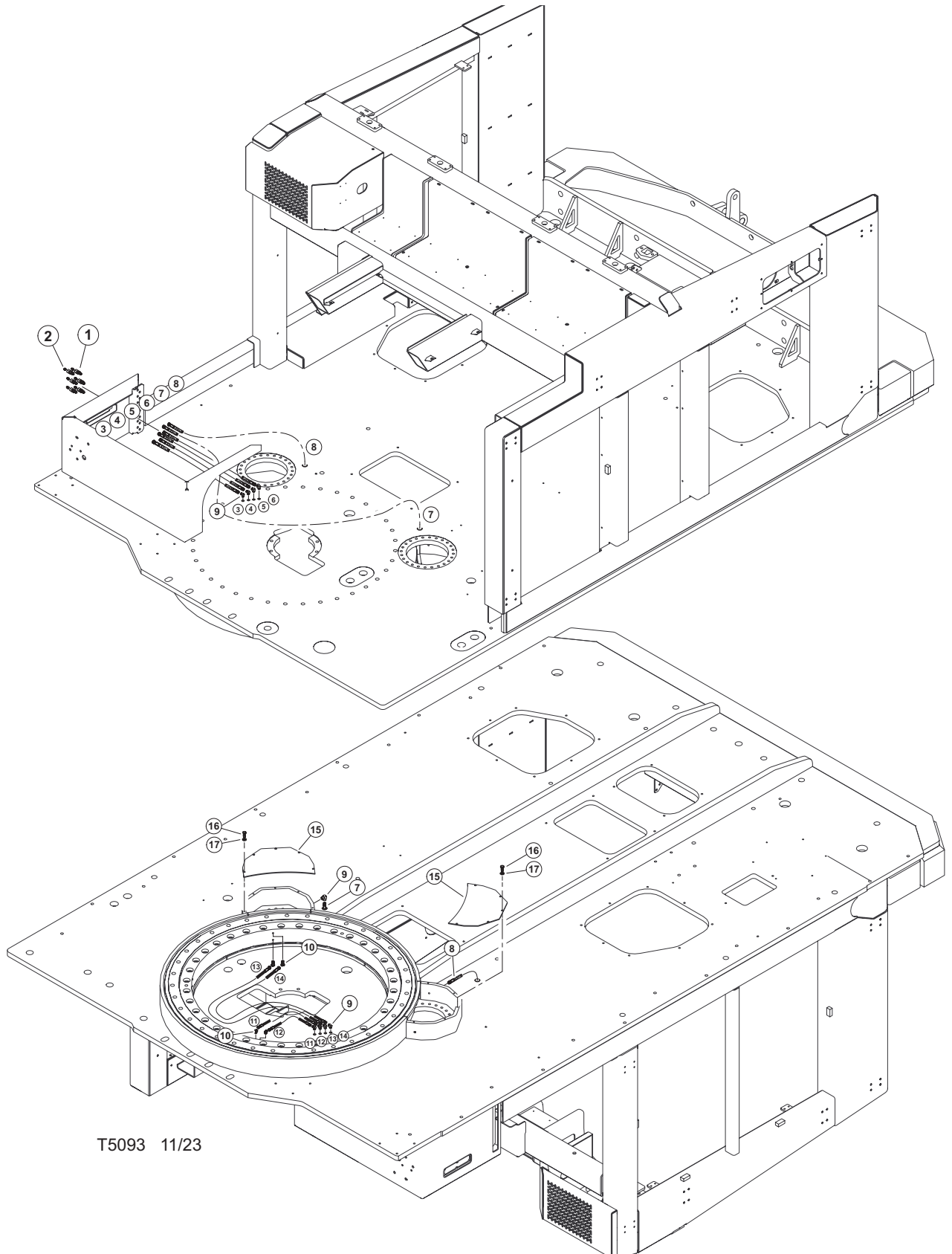
T5094 11/23

REF	PART #	QTY	DESCRIPTION	SEE SECTION
	57509	1	VALVE, AUTO GREASE SYSTEM	
1	(CALL)	1	COIL - 24V	
2	(CALL)	1	CARTRIDGE	
3	(CALL)	1	BODY	

PAGE INTENTIONALLY LEFT BLANK

UPPER TURNTABLE

SWING BEARING & BULL GEAR GREASE LINES



T5093 11/23

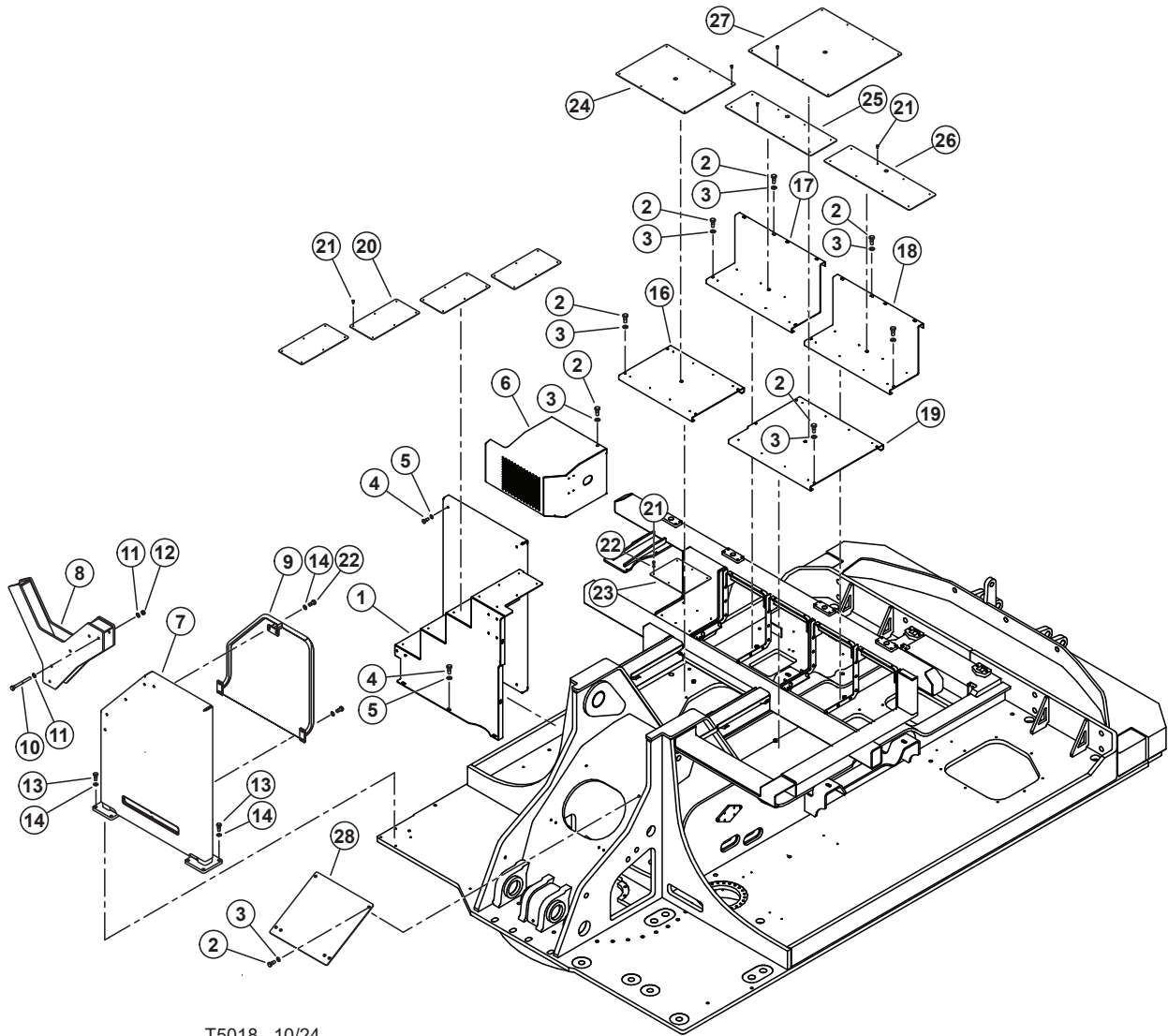
UPPER TURNTABLE

SWING BEARING & BULL GEAR GREASE LINES

REF	PART #	QTY	DESCRIPTION	SEE SECTION
1	15658	6	CONNECTOR, STR BULKHEAD - 2239-2-4S	
2	10704	6	GREASE ZERT - STR	
3	(See Description)	1	HOSE ASSY. - (PART # HLBD37 02-02PS-04JS-W) (GREASE ZERT TO 90° FITTING)	
4	(See Description)	1	HOSE ASSY. - (PART # HLBD37.5 02-02PS-04JS-W)(GREASE ZERT TO 90° FITTING)	
5	(See Description)	1	HOSE ASSY. - (PART # HLBD38 02-02PS-04JS-W)(GREASE ZERT TO 90° FITTING)	
6	(See Description)	1	HOSE ASSY. - (PART # HLBD38.5 02-02PS-04JS-W)(GREASE ZERT TO 90° FITTING)	
7	(See Description)	1	HOSE ASSY. - (PART # HLBD138 02-02PS-04JS-W) (GREASE ZERT TO BULL GEAR)	
8	(See Description)	1	HOSE ASSY. - (PART # HLBD33 02-02PS-04JS-W) (GREASE ZERT TO BULL GEAR)	
9	22281	9	FITTING, 90° - 5546132	
10	16263	4	ELBOW, 45 SWIVEL FEMALE - 1504-2-2	
11	(See Description)	1	HOSE ASSY. - (PART # HLBD24 02-02PS-04JS) (90° FITTING TO SWING BEARING)	
12	(See Description)	1	HOSE ASSY. - (PART # HLBD24 02-02PS-04JS) 90° FITTING TO SWING BEARING)	
13	(See Description)	1	HOSE ASSY. - (PART # HLBD42 02-02PS-04JS) (90° FITTING TO SWING BEARING)	
14	(See Description)	1	HOSE ASSY. - (PART # HLBD42 02-02PS-04JS) (90° FITTING TO SWING BEARING)	
15	48691	2	COVER, ACESS - PINION GEAR	
16	11707	10	BOLT - .375" X 1.00"	
17	15528	10	WASHER, SAE FLAT - .375"	

UPPER TURNTABLE

(BUTT PLATE, STAIRS & TREAD PLATE INSTALLATION)



T5018 10/24

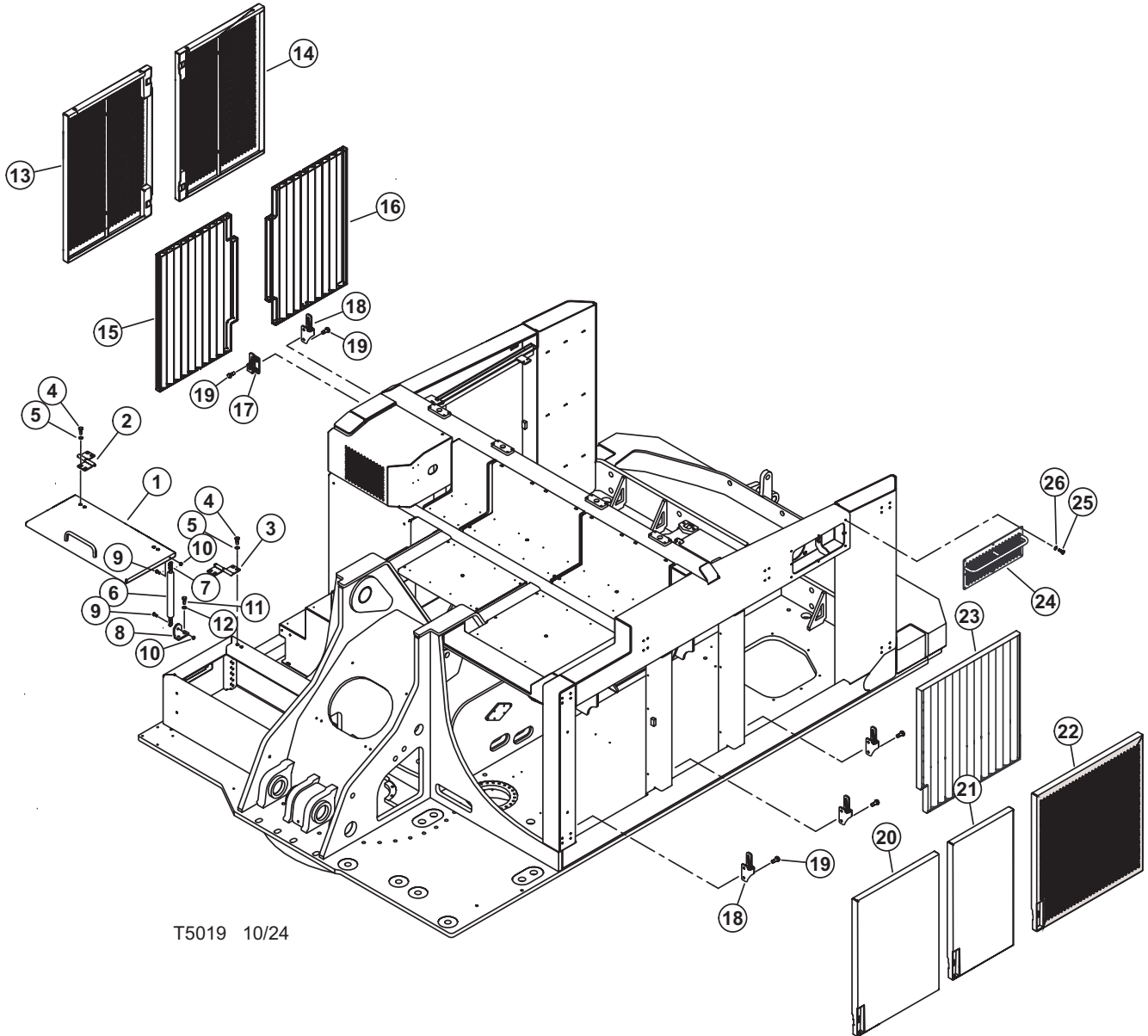
UPPER TURNTABLE

(BUTT PLATE, STAIRS & TREAD PLATE INSTALLATION)

REF	PART #	QTY	DESCRIPTION	SEE SECTION
1	66188	1	WELDMENT, STEP-LL	
2	11707	20	BOLT - .375" X 1.00"	
3	15528	20	WASHER, SAE FLAT - .375"	
4	20050	7	BOLT - .4375" X 1.25"	
5	15548	7	WASHER, SAE FLAT - .4375"	
6	66135	1	WELDMENT, TOP DOOR-LL	
7	62380	1	WELDMENT, FRONT BUTT PLATE - LOG LOADER	
8	62382	1	WELDMENT, KICKER SRUP -LOG LOADER	
9	65564	1	WELDMENT, LL TOOLBOX HANDRAIL	
10	10834	5	BOLT - .5" X 4.00"	
11	10804	20	WASHER, FLAT - .5"	
12	15533	5	NUT, NYLOCK - .5"	
13	50100	8	BOLT - .5" X 1.25"	
14	15534	15	WASHER, SAE FLAT - .5"	
16	66175	1	WELDMENT, MID STEP	
17/18	66058	2	WELDMENT, REMOVABLE BOOM WALKWAY	
19	66185	1	WELDMENT, DOOR STEP	
20	66258	4	PLATE, TREAD	
21	81465 (Lawson)	AR	BUTTON HEAD SOCKET CAP SCREW STEEL #10-24 X 3/4"	
22	10783	6	BOLT - .5" X 1.00"	
23	62469	1	PLATE, TREAD	
24	66261	1	PLATE, TREAD	
25/26	66064	2	PLATE, TREAD	
27	66262	1	PLATE, TREAD	
28	62564	1	PLATE, COVER - ROTARY MANIFOLD - LL	

UPPER TURNTABLE

(SIDE DOORS & TOOL BOX COVER INSTALLATION)



T5019 10/24

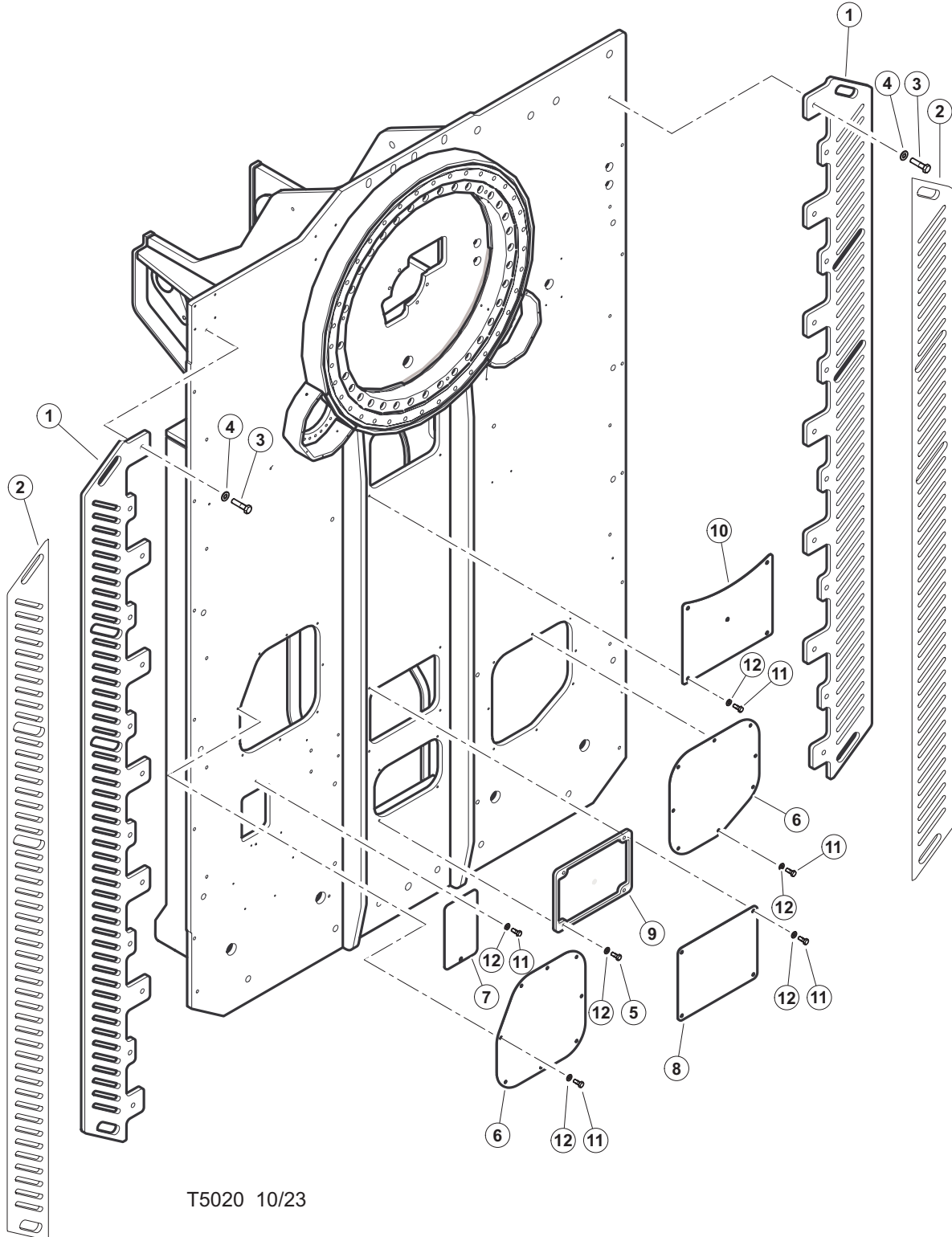
UPPER TURNTABLE

(SIDE DOORS & TOOL BOX COVER INSTALLATION)

REF	PART #	QTY	DESCRIPTION	SEE SECTION
1	65558	1	WELDMENT, LL-TOOL BOX LID	
2	65531	1	HINGE ASSY, 2 BOLT, RH	
3	65530	1	HINGE ASSY, 2 BOLT, LH	
4	50100	8	BOLT - .5" X 1.25"	
5	10800	8	WASHER, FLAT - .5"	
6	57963	1	SHOCK, GAS	
7	54108	4	STUD, ROD END - GAS SPRING	
8	65559	1	STRUT MOUNT BRACKET 90 DEG	
9	10822	2	BOLT - .3125" X 1.25"	
10	10812	2	NUT, LOCK - .3125"	
11	11707	2	BOLT - .375" X 1"	
12	10802	2	WASHER, FLAT - .375"	
13/14	62177	2	DOOR, COOLER - LOG LOADER	
15/16	62327	2	PLATE, LUG STICK - LL	
17	51657	2	LATCH, CAM - DOOR R.H.	
18	51658	8	LATCH, CAM - DOOR L.H.	
19	58225	16	BOLT, CAM LATCH 3/8-16X3/4 COUNTERSUNK	
20	66096	1	WELDMENT, DOOR ELECTRICAL - LOG LOADER	
21	66094	1	DEF COMPARTMENT DOOR	
22	62172	1	DOOR, HYDRAULIC COMPARTMENT LL	
23	62173	1	SCREEN, HYDRO DOOR LOG LOADER	
24	48927	1	GUARD, AIR INTAKE	
25	15589	6	BOLT - .3125" X 1.00"	
26	15559	6	WASHER, SAE FLAT - .3125"	

UPPER TURNTABLE

(GUARDS, PANELS AND COVERS INSTALLATION)



T5020 10/23

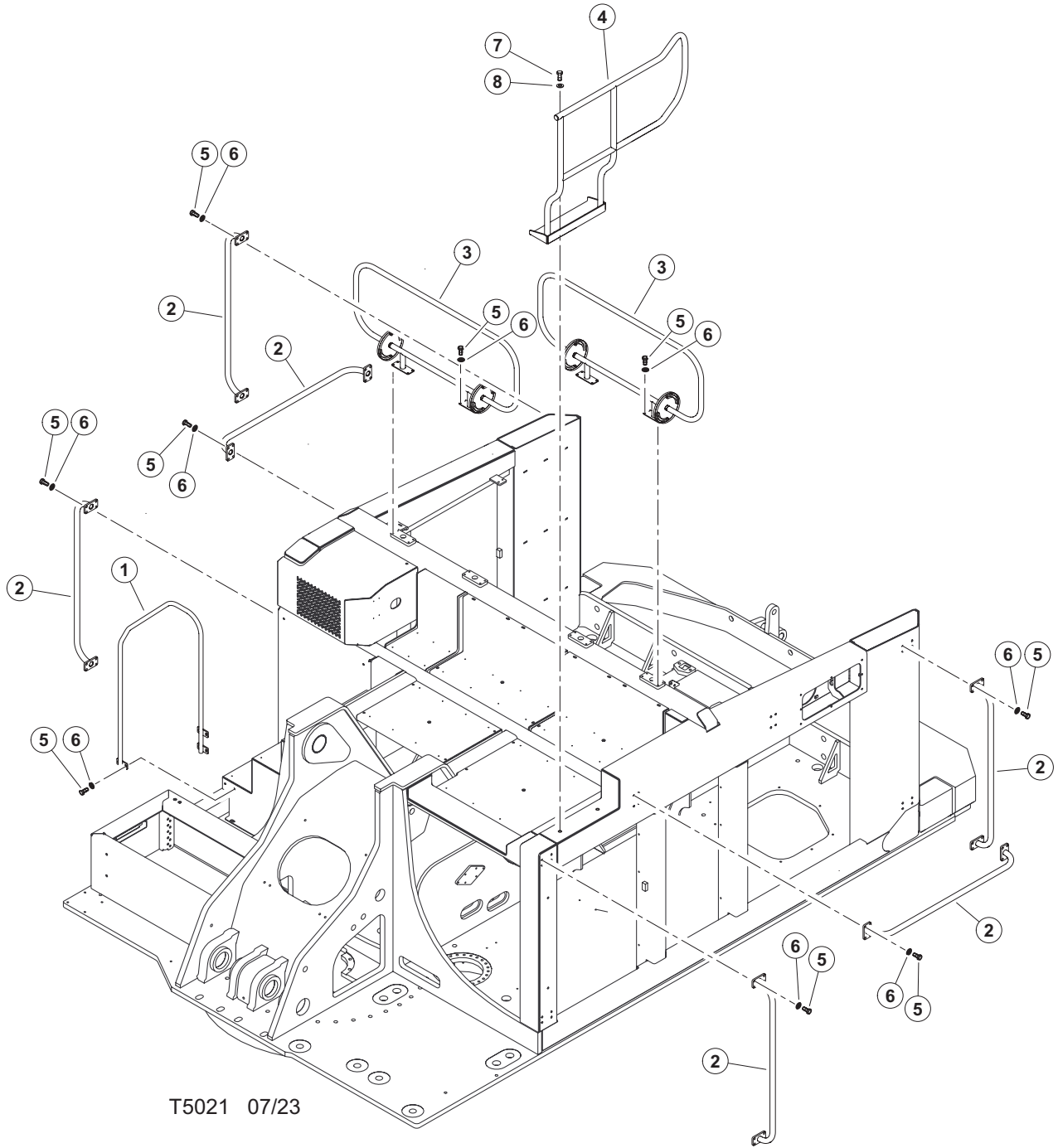
UPPER TURNTABLE

(GUARDS, PANELS AND COVERS INSTALLATION)

REF	PART #	QTY	DESCRIPTION	SEE SECTION
1	66041	2	PLATE, CATWALK	
2	66264	2	TAPE, LOG-LOADER CATWALK	
3	15517	14	BOLT - .625" X 2.5"	
4	10805	14	WASHER, SAE FLAT - .625"	
5	10739	4	BOLT - .5" X 1.5"	
6	48976	2	COVER, PUMP GROUP	
7	52630	1	PLATE, COVER	
8	65591	1	COVER, SCR BASE ACCESS - LL	
9	62003	1	COVER, OIL PAN	
10	62677	1	PLATE, COVER	
11	50100	26	BOLT - .5" X 1.25"	
12	15534	30	WASHER, SAE FLAT - .5"	

UPPER TURNTABLE

(GUARDS, PANELS AND COVERS INSTALLATION)



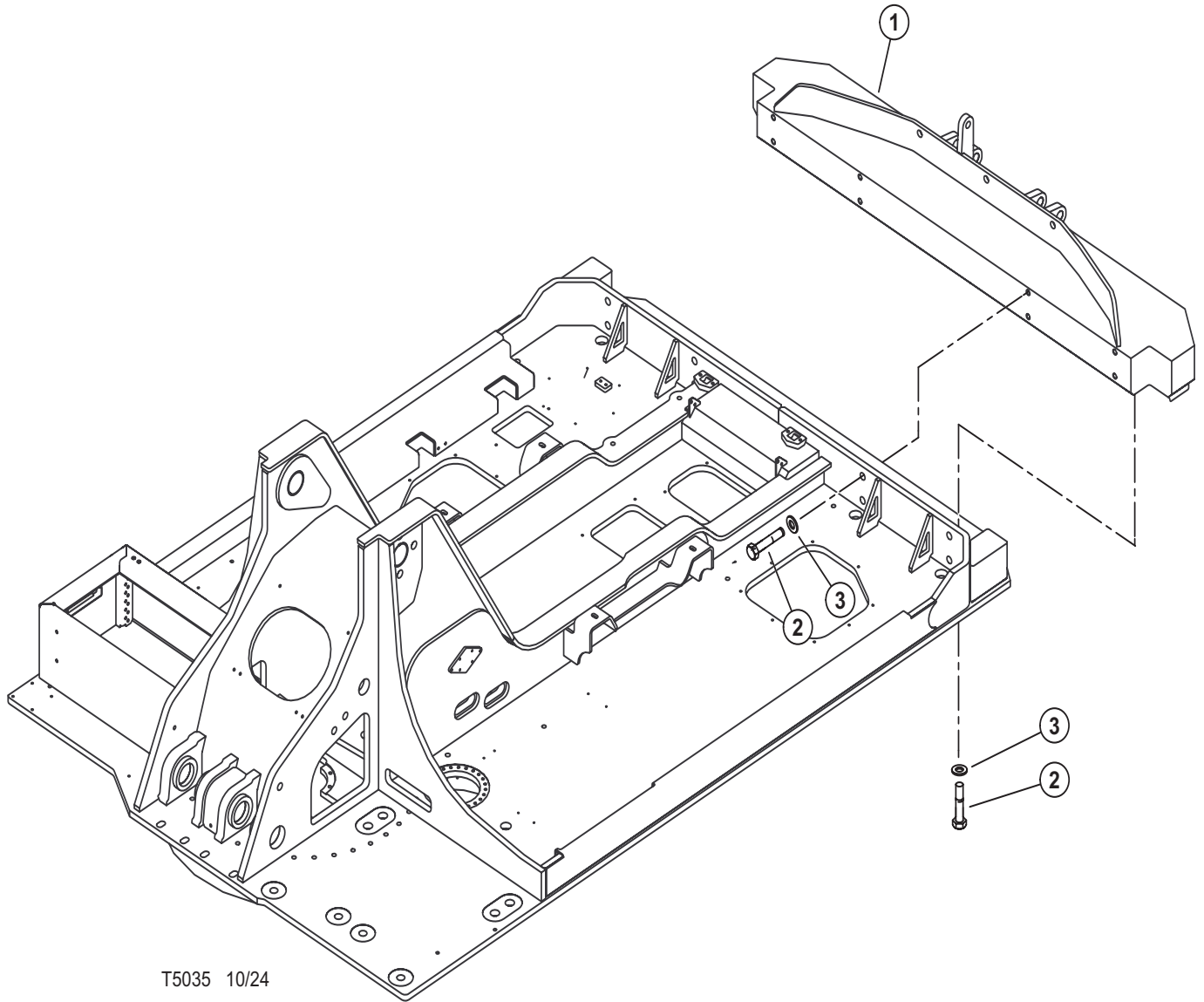
T5021 07/23

UPPER TURNTABLE

(GUARDS, PANELS AND COVERS INSTALLATION)

REF	PART #	QTY	DESCRIPTION	SEE SECTION
1	61660	1	WELD, GRAB HANDLE	
2	66255	6	WELDMENT, HANDRAIL	
3	660850	2	WELD, HANDRAIL, UPPER	
4	662750	1	WELDMENT, H-RAIL-LL	
5	10731	38	BOLT - .375" X 1.5"	
6	10802	38	WASHER, FLAT - .375"	
7	50100	4	BOLT - .5" X 1.25"	
8	15534	4	WASHER, SAE FLAT - .5"	

UPPER TURNTABLE (COUNTER WEIGHT INSTALLATION)



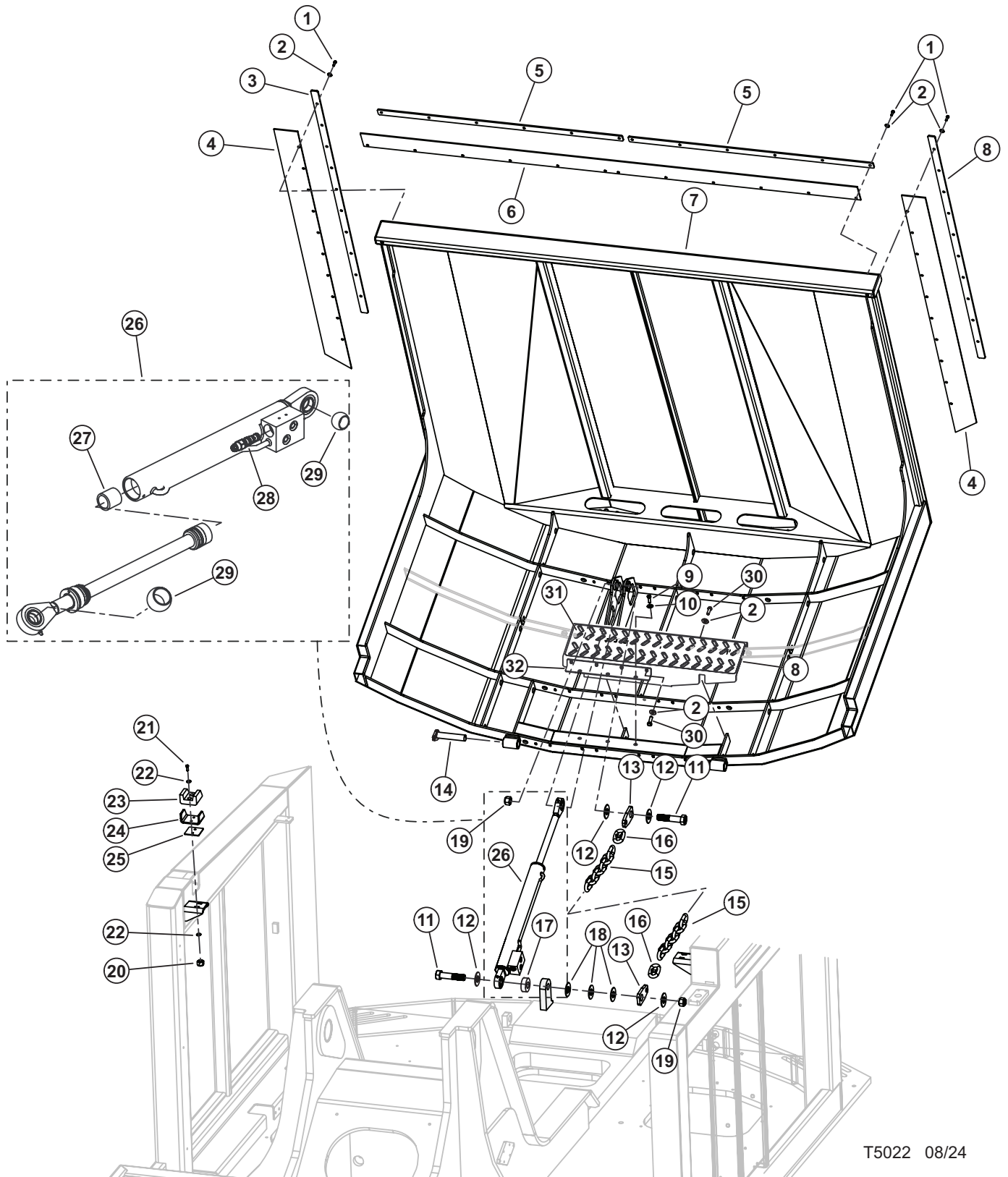
T5035 10/24

UPPER TURNTABLE

(COUNTER WEIGHT INSTALLATION)

REF	PART #	QTY	DESCRIPTION	SEE SECTION
1	66070	1	COUNTERWEIGHT	
2	10733	12	BOLT - 1.00" x 3.00"	
3	18532	12	WASHER, SAE FLAT - 1.00" (EXTRA THICK)	

UPPER TURNTABLE GULLWING INSTALLATION

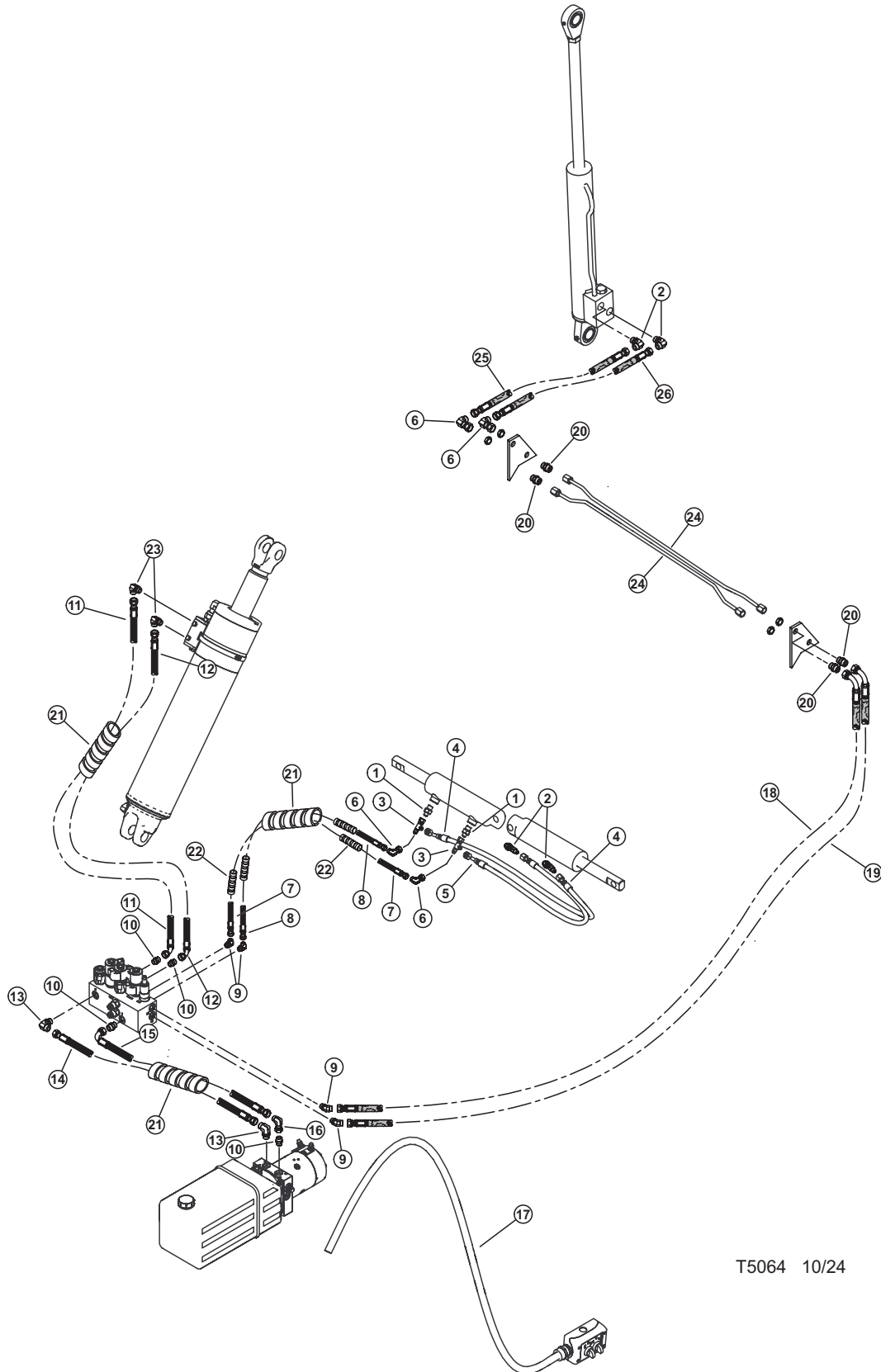


T5022 08/24

UPPER TURNTABLE GULLWING INSTALLATION

REF	PART #	QTY	DESCRIPTION	SEE SECTION
1	11707	27	BOLT - .375" X 1"	
2	10802	35	WASHER, FLAT - .375"	
3	62168	2	PLATE, GULLWING, RUBBER HOLDOWN	
4	62169	2	RUBBER, GULLWING	
5	48457	2	PLATE, GULLWING - RUBBER HOLD DOWN	
6	48626	1	RUBBER, GULLWING FRONT - TAIL	
7	66035	1	DOOR, LL GULLWING	
8	66360	1	WELDMENT, GW STEP	
9	50100	3	BOLT - .5" X 1.25"	
10	10802	3	WASHER, FLAT - .375"	
11	52025	2	BOLT, GULLWING CYL. - 1.25" - 7 X 7"	
12	22531	5	WASHER, SAE FLAT - 1.25"	
13	54515	1	LINK, GULLWING SAFETY CHAIN	
14	48390	2	PIN, GULLWING PIVOT - WELDMENT	
15	55715	1	CHAIN, 23 LINK - GULLWING GR 8100	
16	54260	2	CLEVIS, 3/8" - GULLWING (2 PER) NEW	
17	65039	1	GULLWING PIVOT SPACER	
18	23990	3	WASHER, SAE FLAT - 1.25" (EXTRA THICK)	
19	52026	2	NUT, HEX GULLWING CYL. - 1.25" - GRD 9	
20	10812	2	NUT, LOCK - .3125"	
21	10823	4	BOLT - .3125" X 2"	
22	10801	4	WASHER, FLAT - .3125"	
23	54511	2	ISOLATOR, GULLWING MOUNTING-UHMW BLOCK	
24	54512	2	CHANNEL, ISOLATOR MOUNT - GULLWING	
25	54520	2	SPACER, GULLWING ISOLATOR	
26	57848	1	CYLINDER, GULLWING LIFT - COLUMBUS	
27	(See Description)	1	SPHERICAL BUSHING	
28	58009	1	CARTRIDGE, COUNTER BALANCE	
29	(See Description)	1	BUSHING	
	59046	1	SEAL KIT,	
30	10402	8	BOLT - .375" X 1.25"	
31	66362	1	TAPE, GULLWING STEP	
32	66359	1	BRACKET, SUPPORT	

UPPER TURNTABLE GULLWING CYLINDER HYDRAULICS

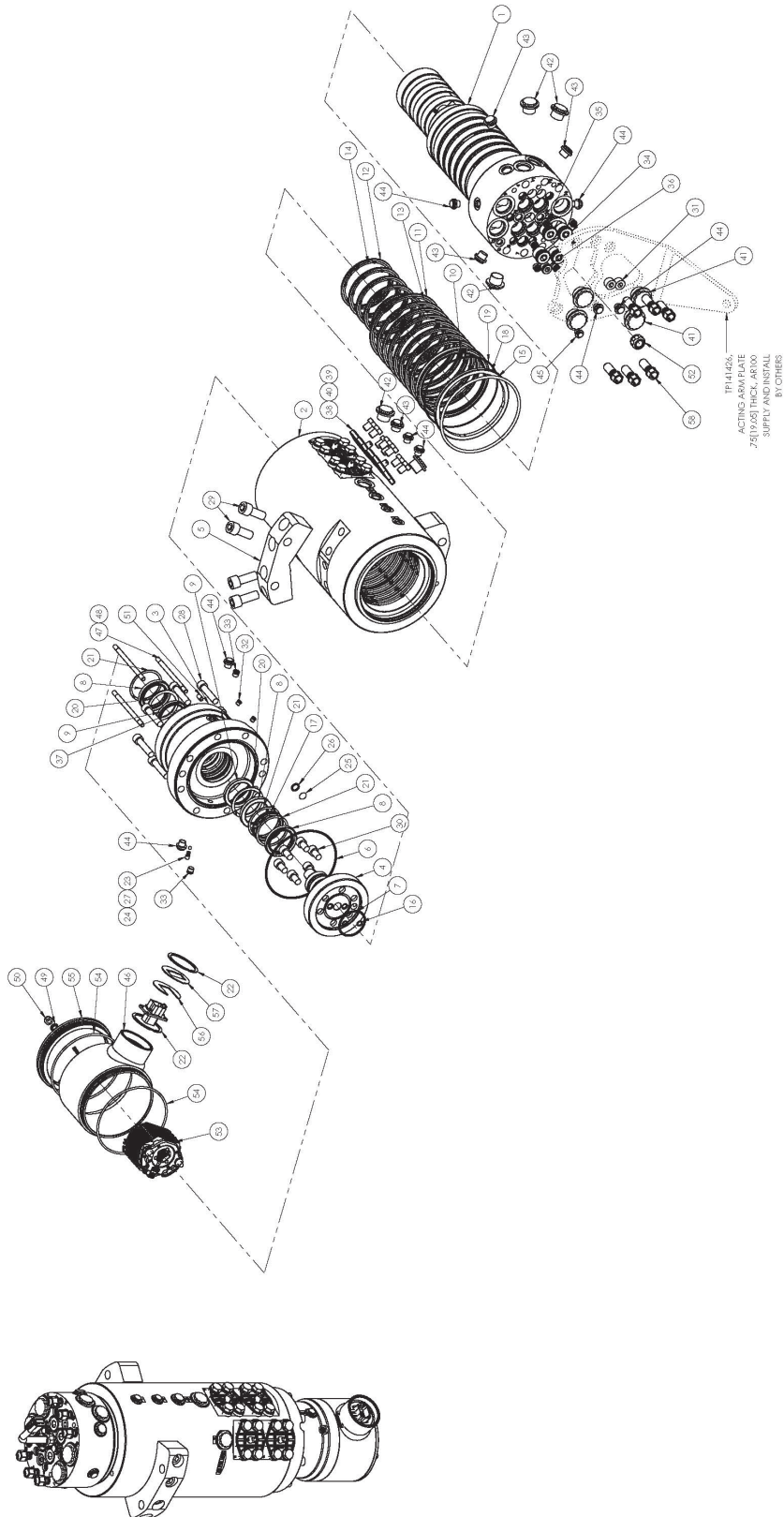


T5064 10/24

UPPER TURNTABLE GULLWING CYLINDER HYDRAULICS

REF	PART #	QTY	DESCRIPTION	SEE SECTION
1	15124	2	CONNECTOR, STR - FF1852T-0406S	
2	15133	4	ELBOW, 90 - FF1868T-0406S	
3	15176	2	TEE - FF2114T-0404S	
4	(KIT - 59057)	1	HOSE ASSEMBLY - 387TC30.5 04-04OS-04O9	
5	(KIT - 59057)	1	HOSE ASSEMBLY - 387TC20.5 04-04OS-04O9	
6	15145	2	ELBOW, 90 SWIVEL - FF2098T-0404S	
7	(KIT - 59057)	1	HOSE ASSEMBLY - 387TC31.5 04-04OS-04OS	
8	(KIT - 59057)	1	HOSE ASSEMBLY - 387TC27 04-04OS-04OS	
9	17646	4	ELBOW, 45 - FF2068T-0406S	
10	18034	4	CONNECTOR, STR - FF1852T-0606S	
11	(KIT - 59057)	1	HOSE ASSEMBLY - 387TC65.5 06-06OS-06O4	
12	(KIT - 59057)	1	HOSE ASSEMBLY - 387TC63 06-06OS-06O4	
13	16296	2	ELBOW, 90 - FF1868T-0606S	
14	(KIT - 59057)	1	HOSE ASSEMBLY - 387TC24 06-06OS-06OS	
15	(KIT - 59057)	1	HOSE ASSEMBLY - 387TC23 06-06OS-06O9	
16	20035	1	ELBOW, 90 SWIVEL - 6 C6LO-S	
17	58606	1	PENDANT (CAB TILT)	
18	(KIT - 59057)	1	HOSE ASSEMBLY - 387TC194 04-04OS-04O9-W	
19	(KIT - 59057)	1	HOSE ASSEMBLY - 387TC194 04-04OS-04O9-W	
20	55383	4	FITTING, BULKHEAD - 4 WTX-WLN-S	
21	20843	AR	PROTECTOR, HOSE - SPRIAL (1.25")(BULK)	
22	20843	AR	PROTECTOR, HOSE - SPRIAL (.78")(BULK)	
23	18034	2	ELBOW, 90 - FF1868T-0606S	
24	57337	2	TUBELINE, CANOPY CYL BULKHEAD	
25	(CALL)	1	Gullwing Lift Pump Hose	
26	(CALL)	1	Gullwing Lift Pump Hose	

UPPER TURNTABLE (ROTARY MANIFOLD)

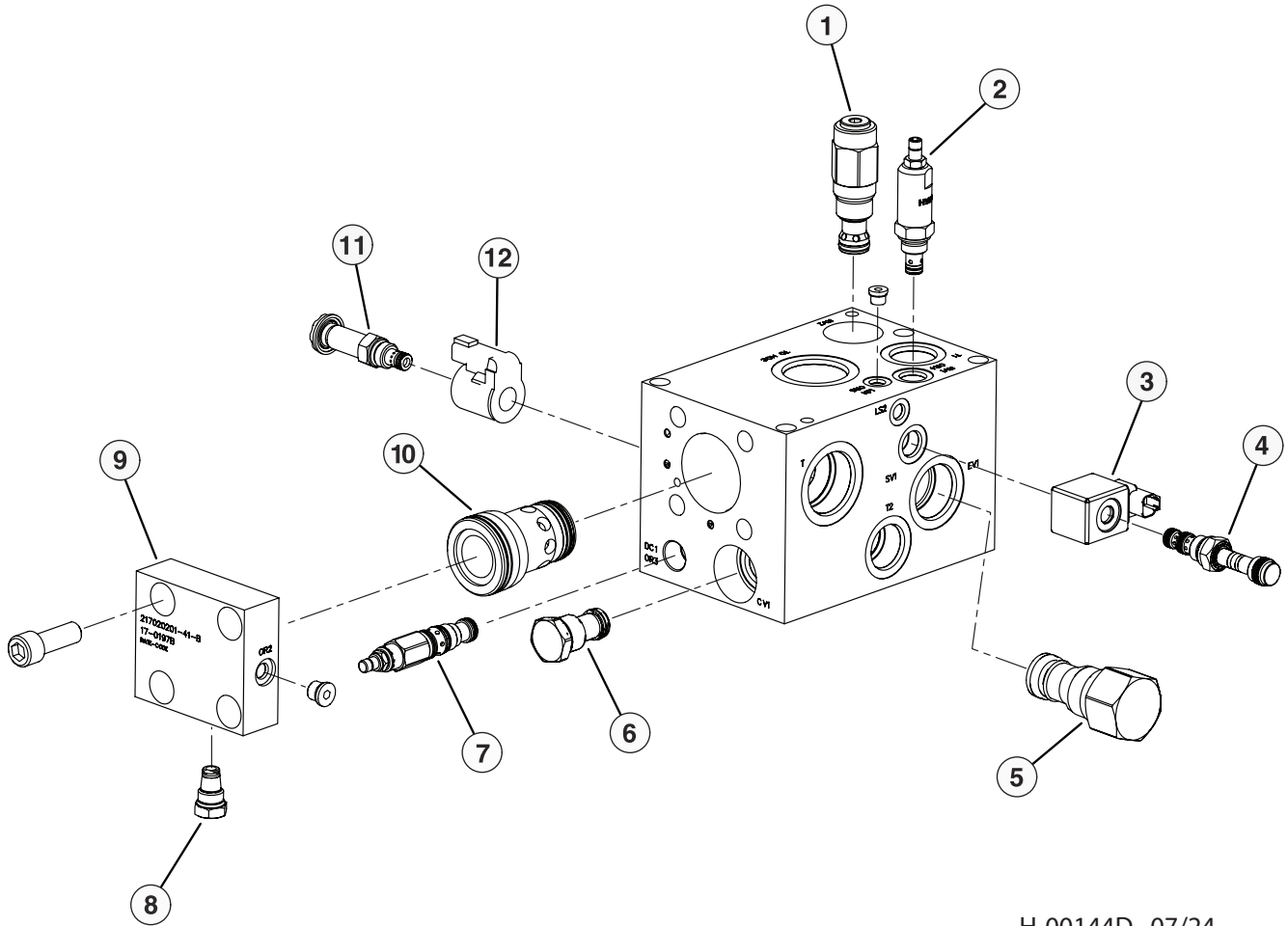


REF	PART #	QTY	DESCRIPTION	SEE SECTION
	65067	1	MANIFOLD, ROTARY - 14 PORT TRACK	
1	(CALL)	1	SPOOL, ROTARY	
2		1	BARREL, ROTARY	
3		1	CAP, FUSE SECTION, OPEN, HD SLIP RING OPTION	
4		1	RETAINER, SPOOL WITH FUEL	
5		2	MOUNTING PLATE	
6		1	ORING 6.000" x 6.250" x 0.125" c/s	
7		1	ORING 2.125" x 2.375" x 0.125" c/s	
8		3	ENVIRO SEAL 50mmX68X8 VITON	
9		2	ENVIRO SEAL 50mmX65X7 VITON	
10		1	SEAL, ENVIRONMENTAL SHAFT, 140mm	
11		8	ORING, HNBR 70, 5.750" x 6.125" x .188" c/s	
12		5	ORING, HNBR 70, 4.125"x 4.500" x .188" c/s	
13		8	LOCSEAL, 140 MM	
14		5	LOCSEAL, 100 MM	
15		1	ORING URETHANE	
16		2	ORING 1/2"X 3/8"X 1/16", VITON	
17		1	RING, ENVIROMENT SEAL SPRT	
18		1	LOCKRING FOR 140mm ENVIRO	
19		1	ORING 160mm X 164mm X 2mm C/S NBR70	
20		2	SPIRAL SNAP RING	
21		3	SPIRAL SNAP RING	
22		2	SPIRAL SNAP RING	
23		1	THREAD INSERT, 'E-Z' LOK, #8-32UNC-2B, 5/16-18UNC-2A	
24		1	SPRING	
25		1	TEMPERATURE LABEL	
26		1	ORING	
27		1	STEEL BALL 6mm	
28		8	SHCS METRIC G12.9	
29		8	SHCS METRIC G12.9	
30		6	SHCS METRIC G12.9	
31		2	1/2" NPT HEX PLUG FLUSH	
32		3	#02 ORB ZLG PLUG SH	
33		2	#04 ORB ZLG PLUG SH	
34		4	#12 ORB CUSTOM PLUG SH	
35		6	#05 ORB ZLG PLUG SH	
36		1	#08 ORB ZLG PLUG SH	
37		1	#06 ORB ZLG PLUG SH	
38		4	PLUG	
39		4	ORING, 36.0mm X44.0mm X4.0mm	
40		16	HEXBOLT M12X16 G10.9	
46		1	COVER WELDMENT, SLIPRING	
47		3	5/16-18 x 5.25" LENGTH	
48		3	HEAT SHRINK TUBE	
49		3	SEAL WASHER 5/16	
50		3	ACORN NUT 5/16-18	
51		1	SET SCREW, 5/16-18UNC X 5/8LG	
52		1	FITTING, LT 0.500" GRN	
53		1	ELC SLIP RING, 6 POWER, 2 SIGNAL	
54		2	ORING, 70 DUROMETER 5.875" X 6.125" X 0.125"C/S	
55		1	CAP, SLIP RING COVER	
56		1	PLATE, CONNECTOR MOUNT	
57		1	PLATE, CONNECTOR MOUNT	
58	(CALL)	6	BOLT, CONE LUG STYLE, M16 X 1.5 X 33mm SHANK LENGTH	

Please contact TimberPro Dealer or Factory before attempting to disassemble or repair rotary manifold. Rotary manifold needs

UPPER TURNTABLE

(HOC-CONTROL-RETURN MANIFOLD BREAKDOWN)



H-00144D 07/24

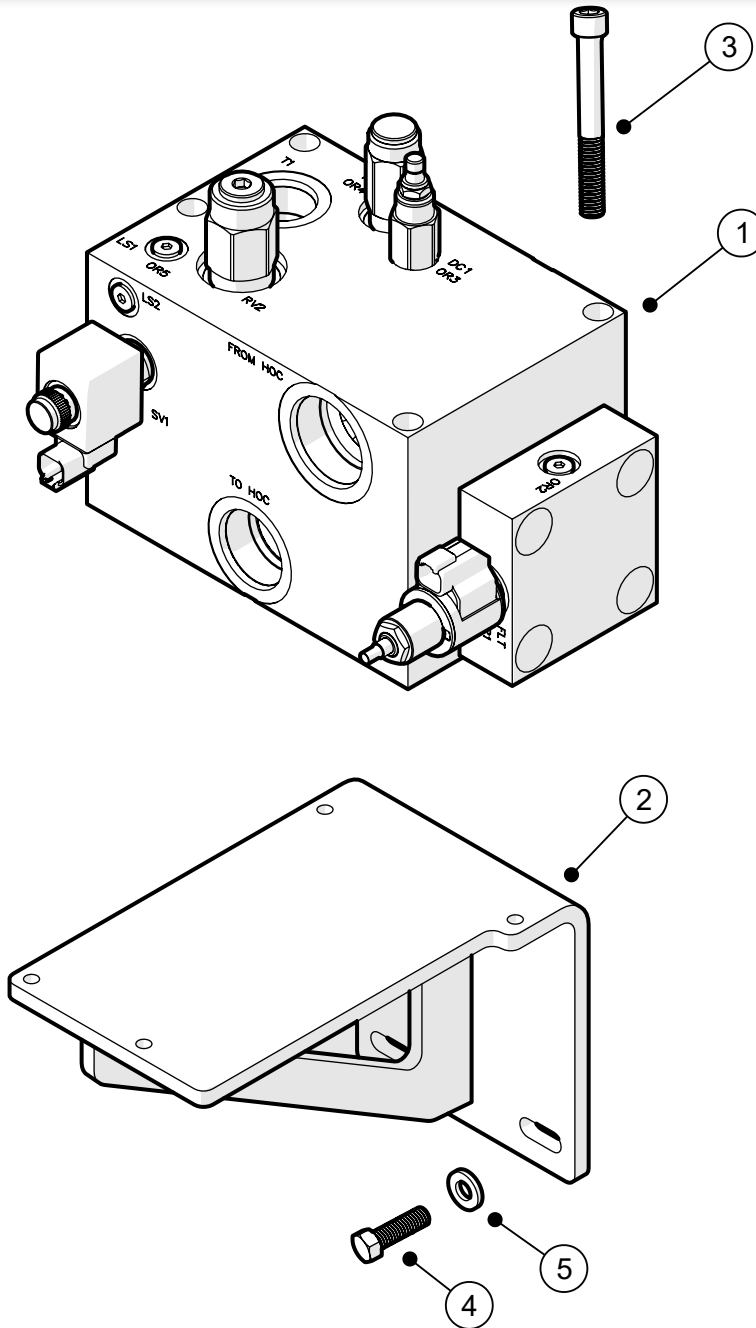
SEE SECTION

REF	PART #	QTY	DESCRIPTION
-	57849	1	MANIFOLD, HOC CONTROL-RETURN - D SERIES
1	(CALL)	1	CARTRIDGE
2	(CALL)	1	CARTRIDGE
3,4	58302	1	CARTRIDGE & COIL
5	(CALL)	1	CARTRIDGE
6	52184	1	CARTRIDGE, FAN DRIVE
7	(CALL)	1	CARTRIDGE
8		1	CARTRIDGE
9		1	COVER
10		1	CARTRIDGE
11		1	CARTRIDGE
12	(CALL)	1	COIL

PAGE INTENTIONALLY LEFT BLANK

UPPER TURNTABLE

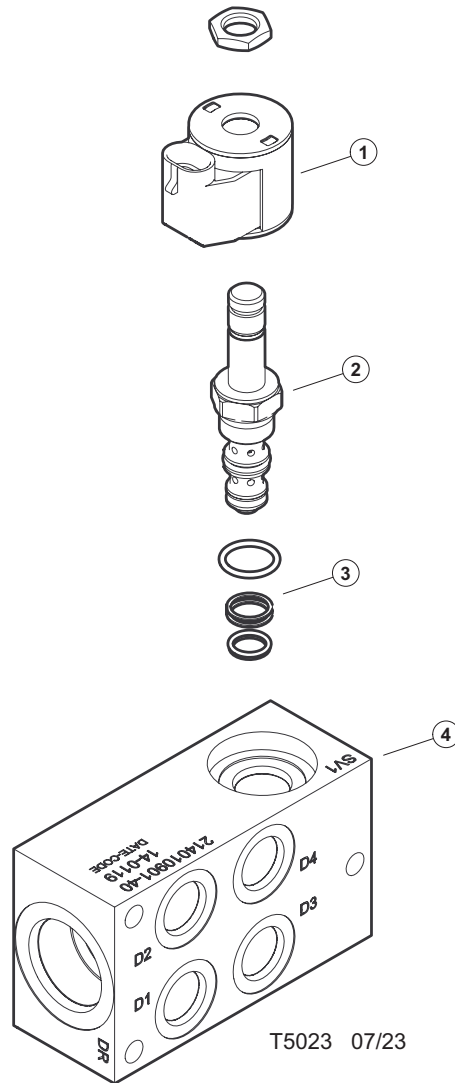
(HOC-CONTROL-RETURN MANIFOLD INSTALLATION)



REF	PART #	QTY	DESCRIPTION	SEE SECTION
1	57849	1	MANIFOLD, HOC CONTROL-RETURN - D SERIES	
2	62528	1	BRACKET, MANIFOLD - HOC	
3	58219	4	SOCKET HEAD CAP SCREW	
4	10402	4	BOLT	
5	10802	4	WASHER, FLAT	

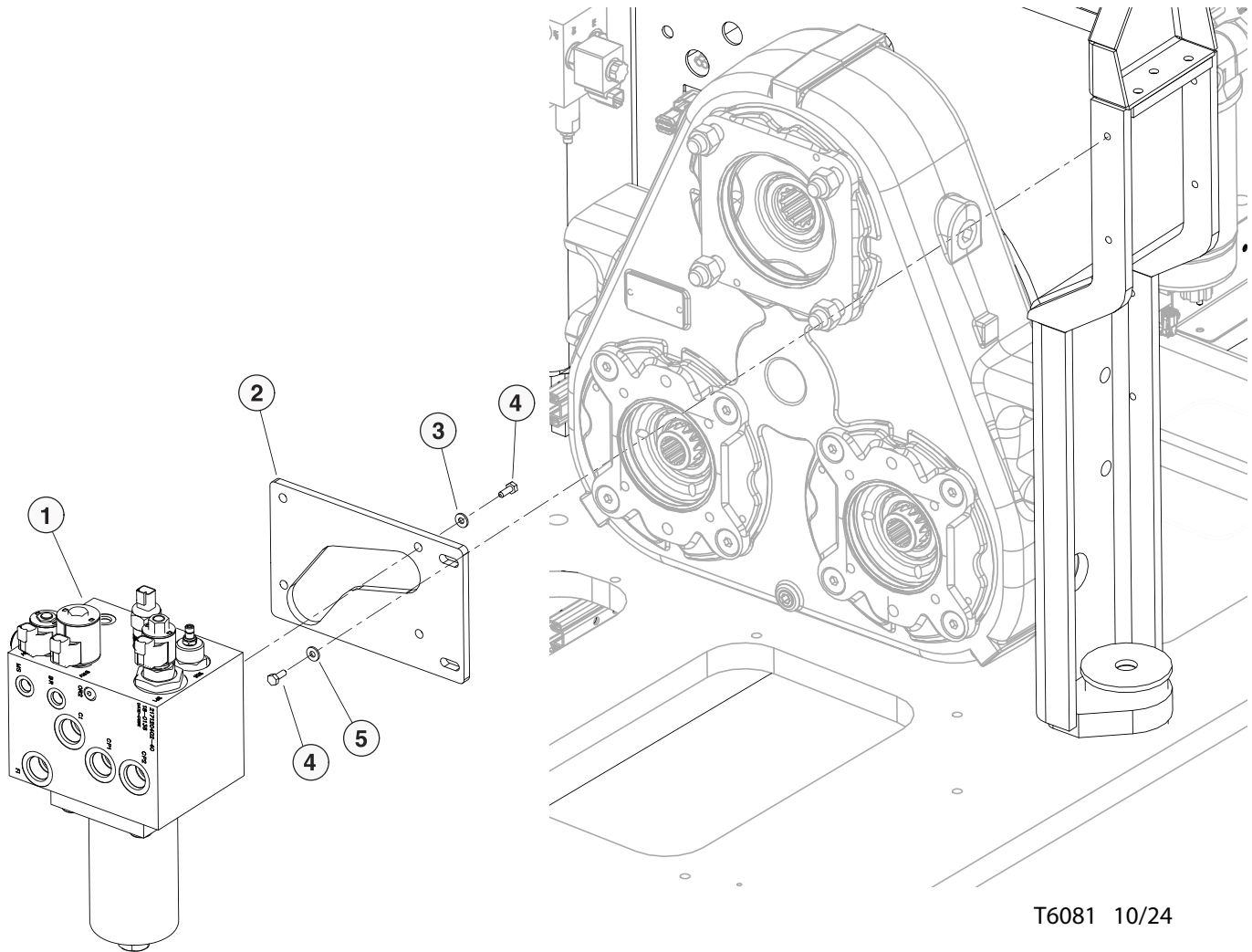
UPPER TURNTABLE

(CASE DRAIN / SWING LOCK MANIFOLD)



REF	PART #	QTY	DESCRIPTION	SEE SECTION
-	55259	1	MANIFOLD, CASE DRAIN/SWING LOCK	
1	53737	1	COIL, CARTRIDGE - PARK BRAKE - TM	
2	53734	1	VALVE, SOLENOID - Motor Shift - TM (INCLUDES COIL)	
	(CALL)	1	NUT	
3	(CALL)	1	SEAL KIT	
4	(CALL)	1	MANIFOLD BODY	

UPPER TURNTABLE (CHARGE MANIFOLD INSTALLATION)

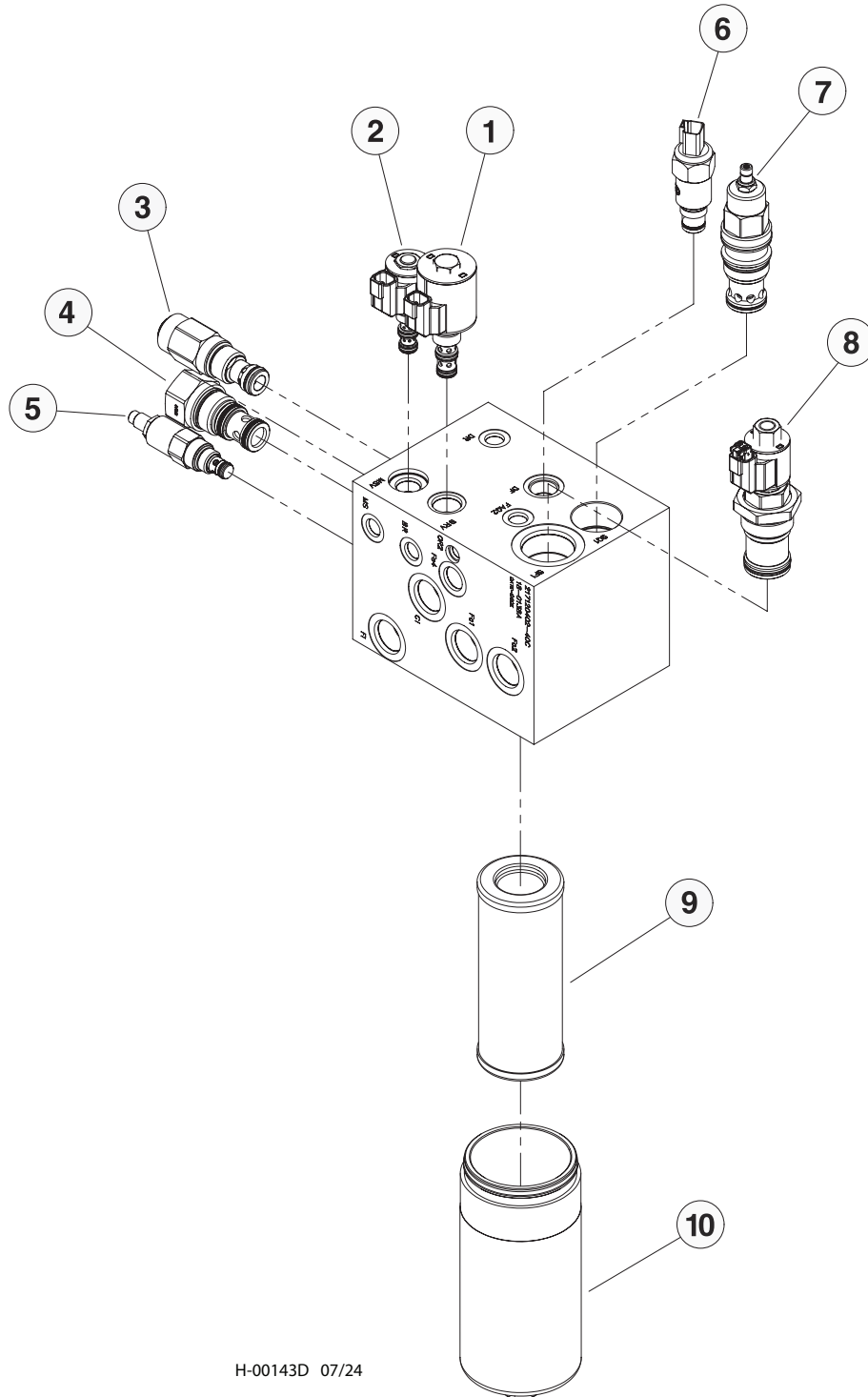


T6081 10/24

REF	PART #	QTY	DESCRIPTION	SEE SECTION
1	57881	1	MANIFOLD, CHARGE / COOLER - D SERIES	
2	60391	1	PLATE, CHARGE BLOCK MOUNT - D	
3	15528	4	WASHER, SAE FLAT - .375"	
4	11707	6	BOLT - .375" X 1"	
5	10802	2	WASHER, FLAT - .375"	

PAGE INTENTIONALLY LEFT BLANK

UPPER TURNTABLE (CHARGE MANIFOLD BREAKDOWN)



H-00143D 07/24

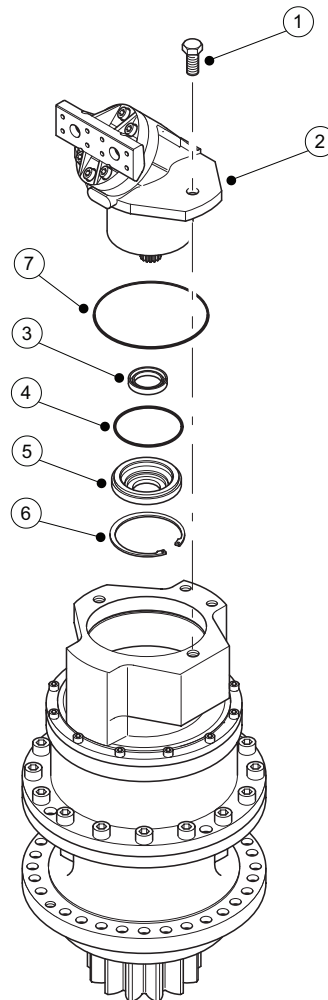
UPPER TURNTABLE

(CHARGE MANIFOLD BREAKDOWN)

REF	PART #	QTY	DESCRIPTION	SEE SECTION
1	58362	1	CARTRIDGE, COIL COMBO PB	
2	58363	1	CARTRIDGE, COIL COMBO MTR SFT	
3	53882	1	CARTRIDGE, PRES. RELIEF	
4	(CALL)	1	CARTRIDGE	
5	(CALL)	1	CARTRIDGE	
6	62004	1	SWITCH, FILTER INDICATOR	
7	52223	1	CARTRIDGE, FAN DRIVE	
8	53737	1	COIL, PARK BRAKE	
9	19861	1	ELEMENT, HYDROSTATIC FILTER	
10	(CALL)	1	BOWL	

UPPER TURNTABLE

(SWING MOTOR & GEARBOX)



Parts T3839 05/23

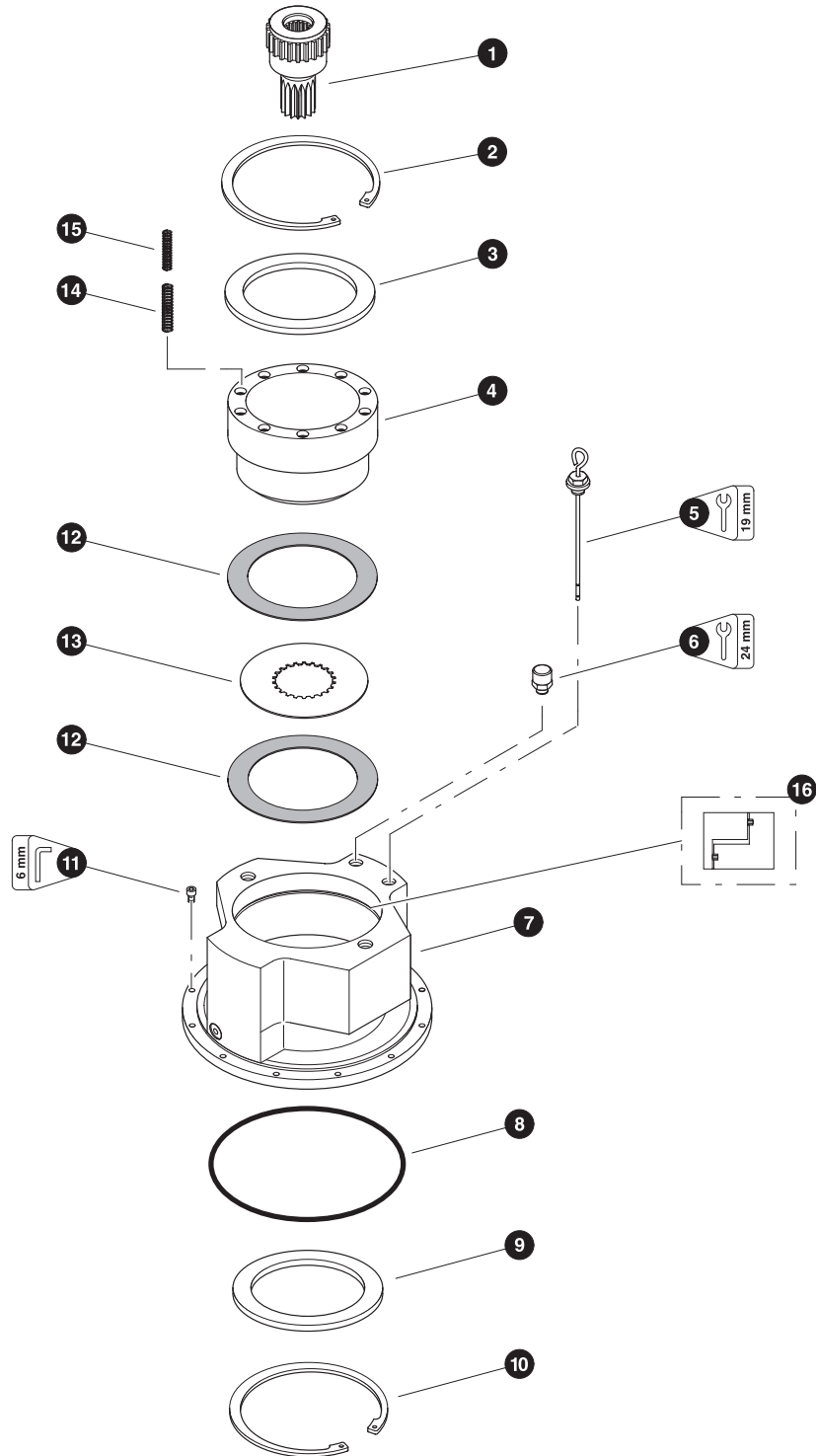
REF	PART #	QTY	DESCRIPTION	SEE SECTION
-	57213	1	MOTOR, SWING - L&S 32.5:1 / 56CC	
1	20661	1	BOLT - 16mm-2.0P x 35mm	
2	17238	1	MOTOR, hydraulic - Rexroth A2FE56 cc	
3	21576	1	SEAL, shaft - 45cc	
	51638	1	SEAL, shaft - 56cc	
4	21577	1	O-RING, front cover - 45cc	
	51639	1	O-RING, front cover - 56cc	
5	21578	1	COVER, front	
6	21579	1	RING, seal retaining	
7	21580	1	O-RING, motor pilot	

Note:

Due to warranty policy restrictions imposed by component suppliers, it is not recommended that the component be disassembled further than is shown in the illustration.

PAGE INTENTIONALLY LEFT BLANK

UPPER TURNTABLE (SWING GEARBOX)



Parts 00626 11/10/2000
25.00

UPPER TURNTABLE

(SWING GEARBOX)

REF	PART #	QTY	DESCRIPTION	SEE SECTION
-	54394	1	GEARBOX - Lohmann ECCENTRIC	
1	21565	1	SHAFT, brake	
2	21566	1	RING, snap - upper brake	
3	21567	1	PLATE, back-up - upper brake	
4	21568	1	PISTON, brake	
5	21569	1	DIPSTICK	
	21571	1	RING, seal	
6	21570	1	BREATHER	
	21571	1	RING, seal	
7	NSS	1	HOUSING, brake	
8	21572	1	O-RING, brake housing	
9	21573	1	PLATE, back-up - lower brake	
10	21574	1	RING, snap - lower brake	
11	21575	12	BOLT, allen head - 8mm x 25mm	
12	NSS	5	DISC, brake	
13	NSS	4	DISC, spacer	
14	NSS	10	SPRING, outer	
15	NSS	10	SPRING, inner	
	57710	1	BRAKE DISC KIT	

Note:

Due to warranty policy restrictions imposed by component suppliers, it is not recommended that the component be disassembled further than is shown in the illustration.

