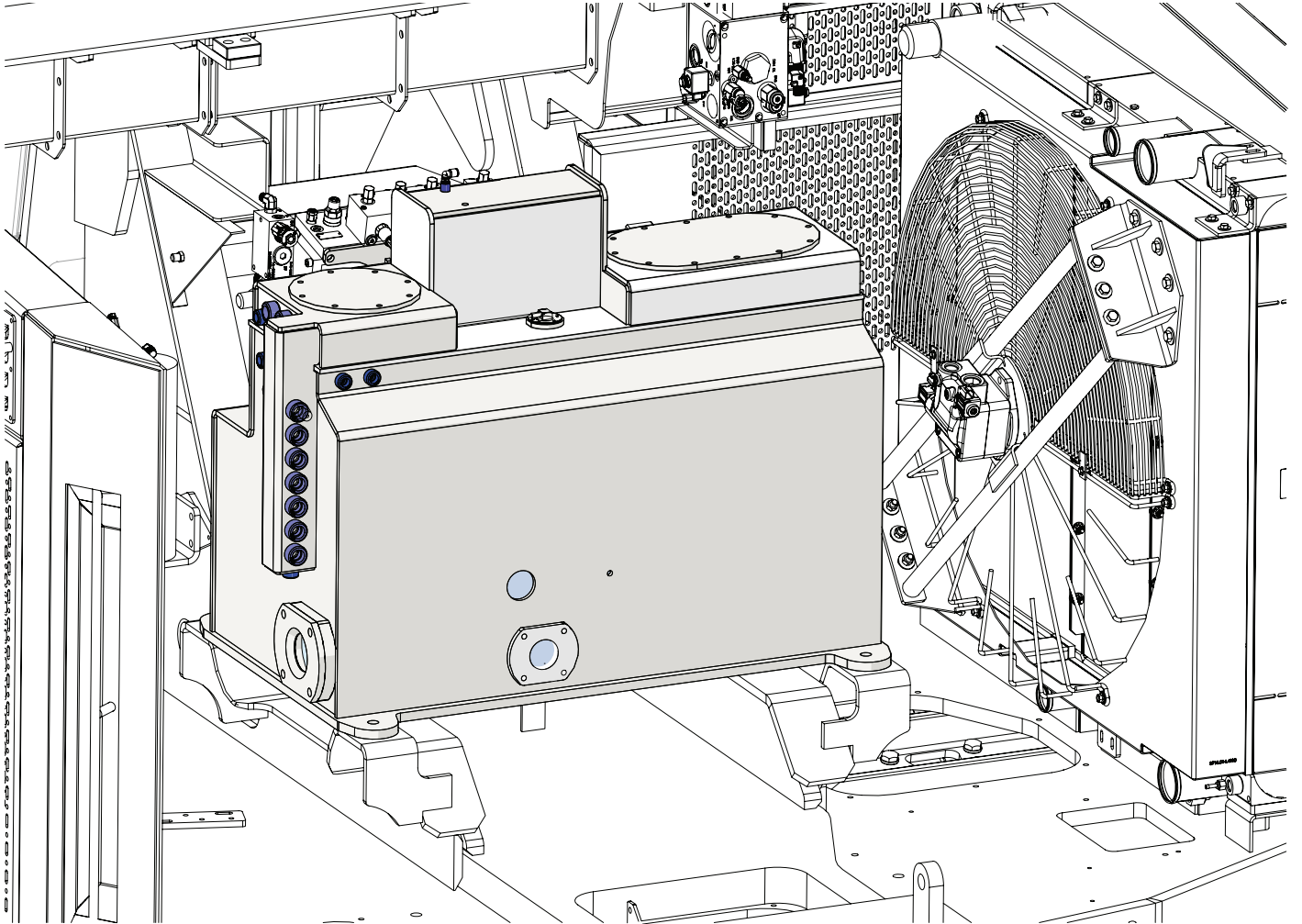
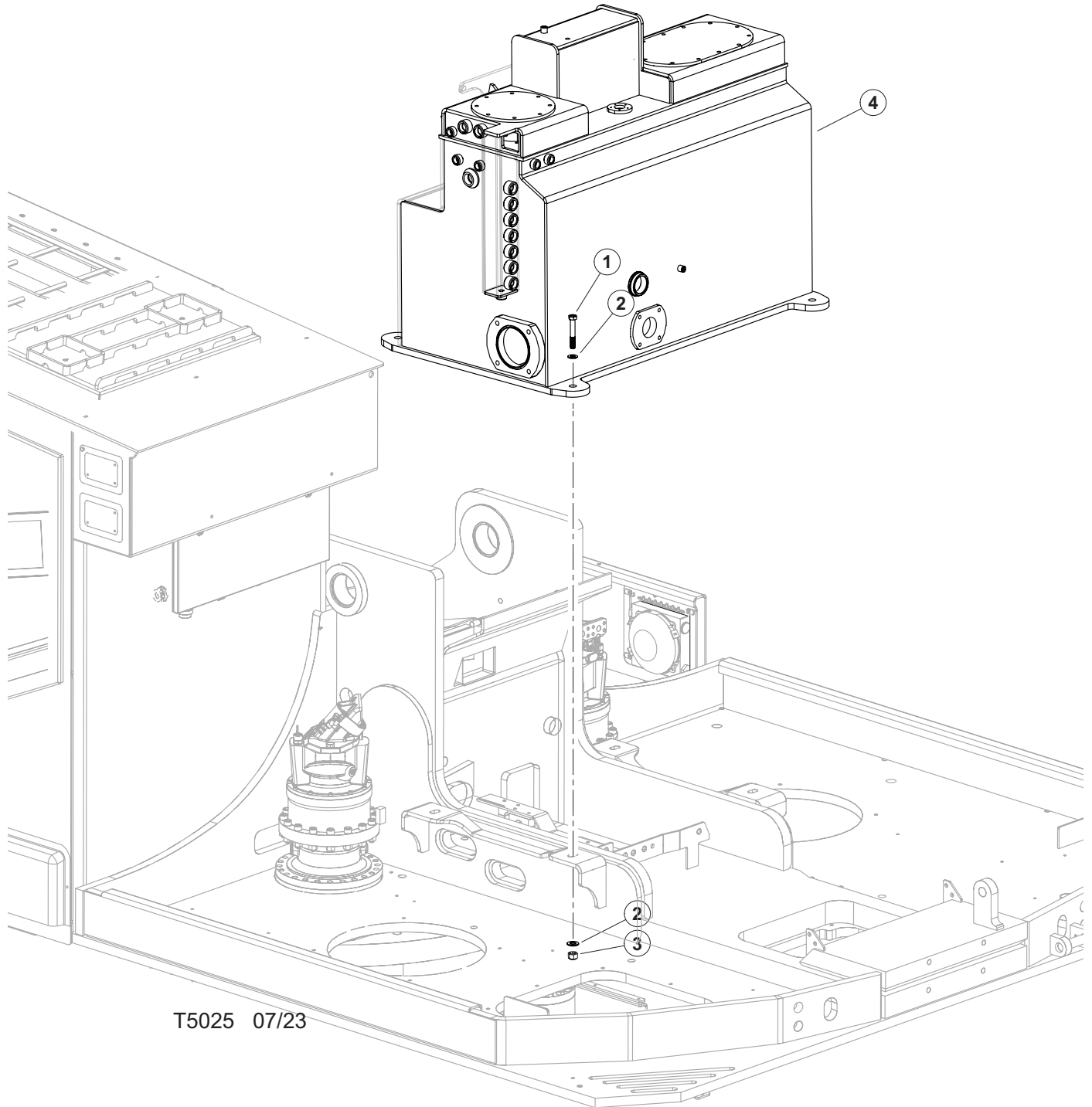


SECTION UP-2 (UPPER TURNTABLE HYDRAULIC TANK)



UPPER TURNTABLE (HYDRAULIC TANK INSTALLATION)



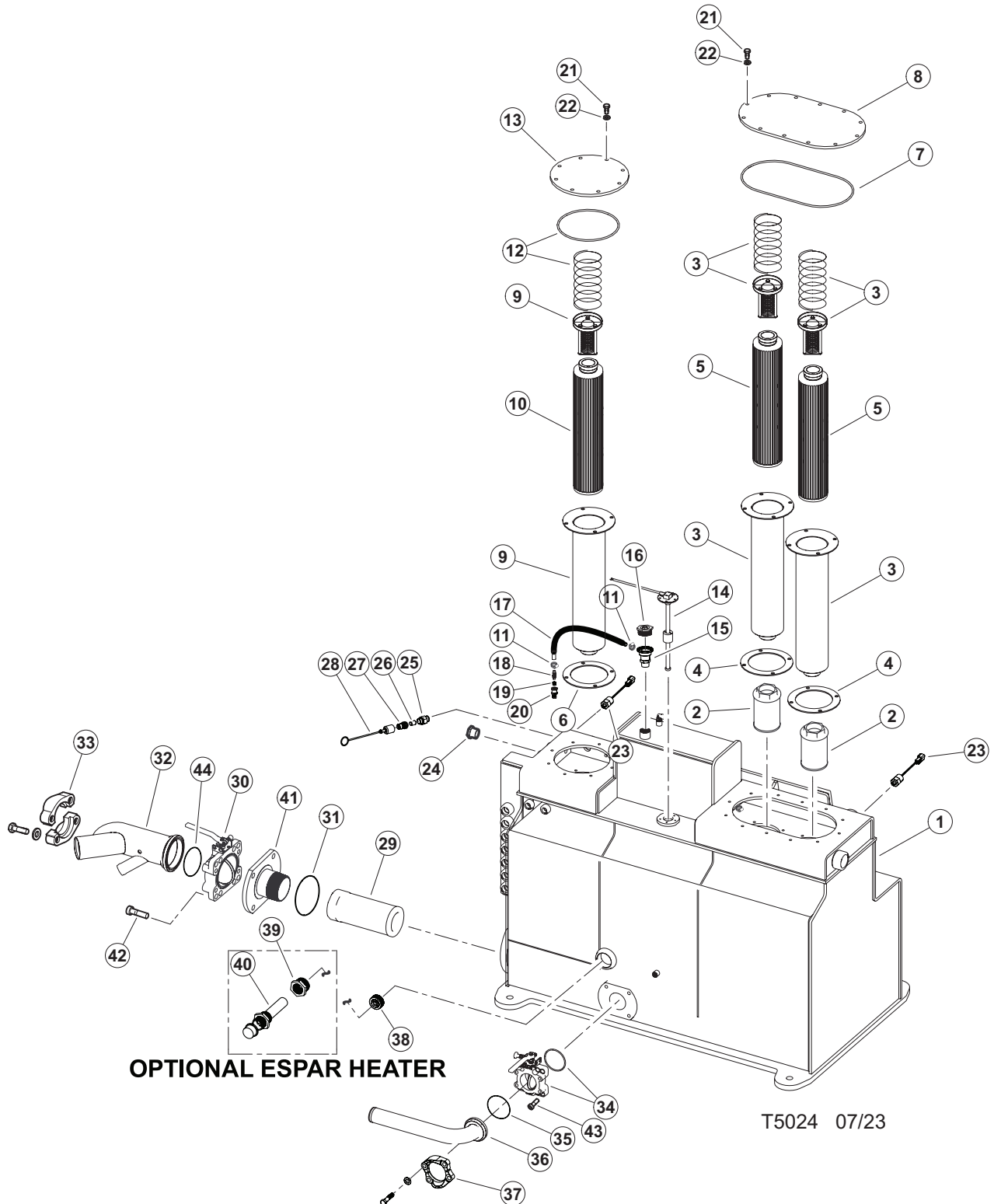
T5025 07/23

UPPER TURNTABLE

(HYDRAULIC TANK INSTALLATION)

| REF | PART # | QTY | DESCRIPTION | SEE SECTION |
|-----|-----------------|-----|-------------------------|---------------|
| 1 | 10775 | 4 | BOLT - .75" X 2.5" | |
| 2 | 15550 | 8 | WASHER, SAE FLAT - .75" | |
| 3 | 10817 | 4 | NUT, LOCK - .75" | |
| 4 | (See Next Page) | 1 | HYDRAULIC TANK ASSEMBLY | See Next Page |

UPPER TURNTABLE (HYDRAULIC TANK COMPONENT INSTALLATION)

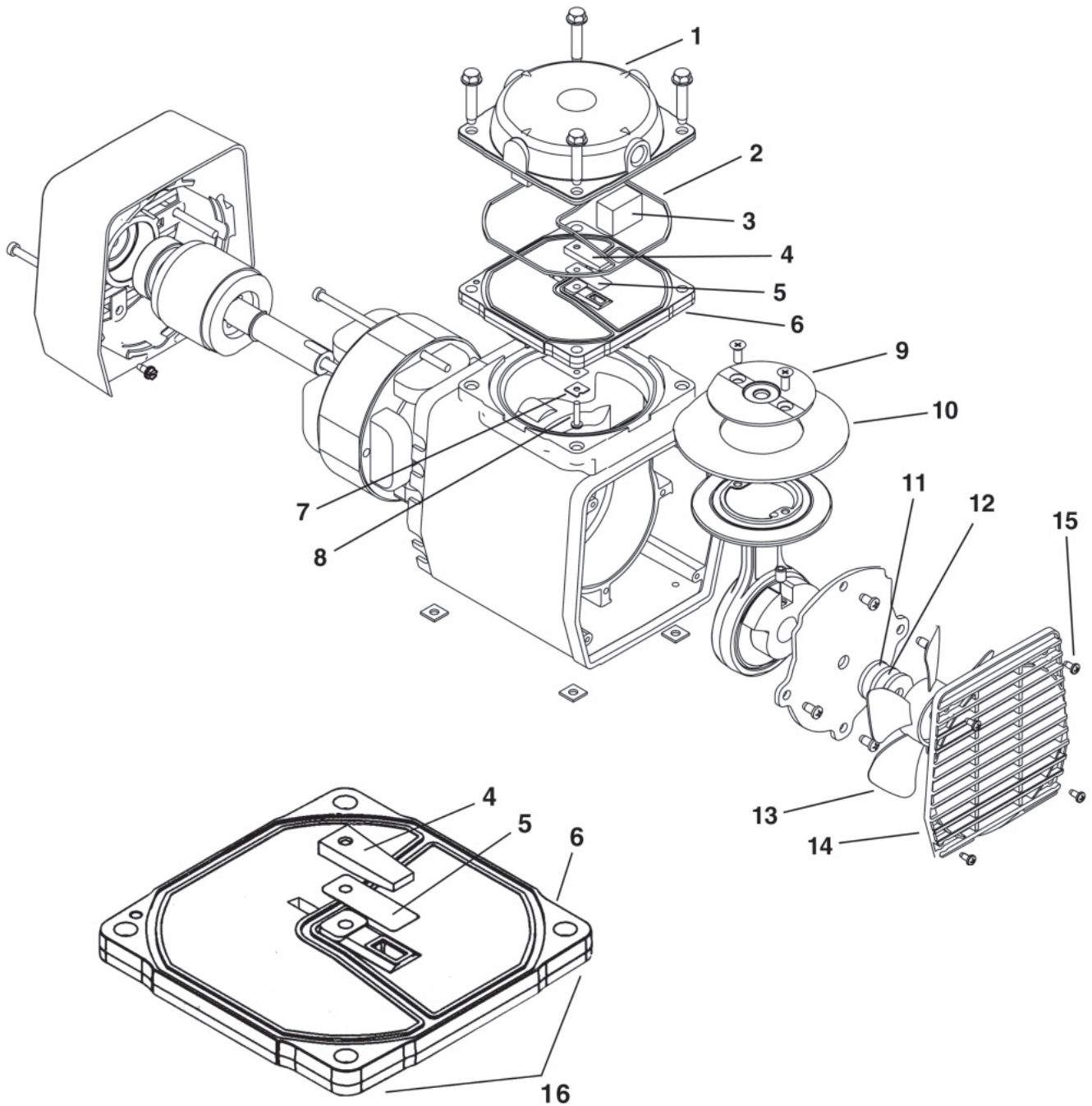


UPPER TURNTABLE

(HYDRAULIC TANK COMPONENT INSTALLATION)

| REF | PART # | QTY | DESCRIPTION | SEE SECTION |
|-----|-------------------|------|--|-------------|
| 1 | 66320 | 1 | WELDMENT, HYD TANK-LL- D | |
| 2 | 66337 | 2 | DIFFUSER, BFT FILTER 8 INCH | |
| 3 | 51620 | 2 | FILTER KIT, HYD. TANK MAIN RETURN | |
| 4 | 52126 | 2 | GASKET, MAIN RETURN FILTER - (51620) | |
| 5 | 52350 | 2 | ELEMENT, MAIN RETURN - HI EFF. | |
| 6 | 16852 | 1 | SEAL, Gasket (LFT-642) | |
| 7 | 66340 | 1 | O-RING, 16" DIA. -385 | |
| 8 | 66330 | 1 | COVER, ACCESS FILTER-DUAL | |
| 9 | 51621 | 1 | FILTER KIT, HYD. TANK - CASE RETURN | |
| 10 | 22647 | 1 | ELEMENT, HYDRAULIC TANK - SMALL | |
| 11 | 16202 | 2 | CLAMP, HOSE - WORM STYLE - .625" | |
| 12 | 15600 | 1 | O-RING - 8" DIA. -369 | |
| 13 | 54414 | 1 | COVER, HYDRAULIC TANK SINGLE | |
| 14 | 57264 | 1 | SENDER, HYD OIL LEVEL W/FLOAT | |
| 15 | 17156 | 1 | STEM, HYDRAULIC TANK RELIEF CAP | |
| 16 | 18135 | 1 | CAP, HYD. RESERVOIR RELIEF - 13 PSI | |
| 17 | 16238 | 5ft. | HOSE, FUEL LINE (BULK ROLL) - .3125" | |
| 18 | 16990 | 1 | CONNECTOR, STR HOSE BARB - 4244-5-4 | |
| 19 | 11318 | 1 | BUSHING, REDUCER - 5406-6-4 | |
| 20 | 15652 | 1 | VALVE, CHECK - HYDRAULIC/FUEL | |
| 21 | 24088 | 20 | BOLT - .5" X 1.25" | |
| 22 | 10804 | 20 | WASHER, FLAT - .5" | |
| 23 | 57818 | 1 | SWITCH, PRESSURE - SCHROEDER | |
| 24 | 24308 | 1 | SIGHT GLASS | |
| 25 | 20067 | 1 | BUSHING, REDUCER - 6410-12-8 | |
| 26 | 55698 | 1 | FITTING, 8-1/2 F50F-S | |
| 27 | 55620 | 1 | NIPPLE, 60 SERIES - H6-63-T12 | |
| 28 | 55617 | 1 | CAP, QUICK CONNECT - RUBBER (RED) | |
| 29 | 15842 | 1 | FILTER, SCREEN - IMPLEMENT | |
| 30 | 54786 | 1 | VALVE, SHUT OFF - BUTTERFLY (4") | |
| 31 | 51726 | 1 | O-RING, HDYRAULIC TANK | |
| | 23095 | 4 | BOLT, ALLEN HEAD - .625" x 2" (51726) | |
| 32 | 42461 | 1 | TUBE, SUCTION - 4" FLANGE - W/O DISC SAW | |
| 33 | 51625 | 1 | KIT, FLANGE - SUCTION TUBE (4") | |
| | (See Description) | 4 | BOLT (Supplier Part # 1-246-90) | |
| | 51725 | 1 | O-RING | |
| 34 | 57834 | 1 | VALVE, BUTTERFLY (2.5") - (AUX. PUMP) | |
| | (See Description) | 1 | 1/2-13 X 1 1/4" UNC - PART # 3551 (LAWSON #) | |
| 35 | (CALL) | 1 | O-RING - UCTION TUBE (AUX. PUMP) | |
| 36 | 62618 | 1 | WELDMENT, SUCTION TUBE(AUX. PUMP) | |
| 37 | 15193 | 1 | KIT, SPLIT FLANGE - 2.5" (CODE 61) | |
| | 15551 | 1 | BOLT - 12MM-1.75P X 40MM (15193) | |
| 38 | 53105 | 1 | PLUG, BLACK PIPE - 2.0" HYD. TANK | |
| 39 | 26397 | 1 | BUSHING, BLACK - 2" X 1.25" (OPTIONAL) | |
| 40 | 20069 | 1 | ELEMENT, HEATER - HYD. TANK (120V 600W) (OPTIONAL) | |
| 41 | 42306 | 1 | PLATE, INTER.-SUCTION PORT 100mm VALVE | |
| 42 | 23095 | 4 | BOLT, ALLEN HEAD - .625" x 2" | |
| 43 | 15551 | 4 | BOLT - 12MM-1.75P X 40MM | |

UPPER TURNTABLE (VACUUM PUMP BREAKDOWN)

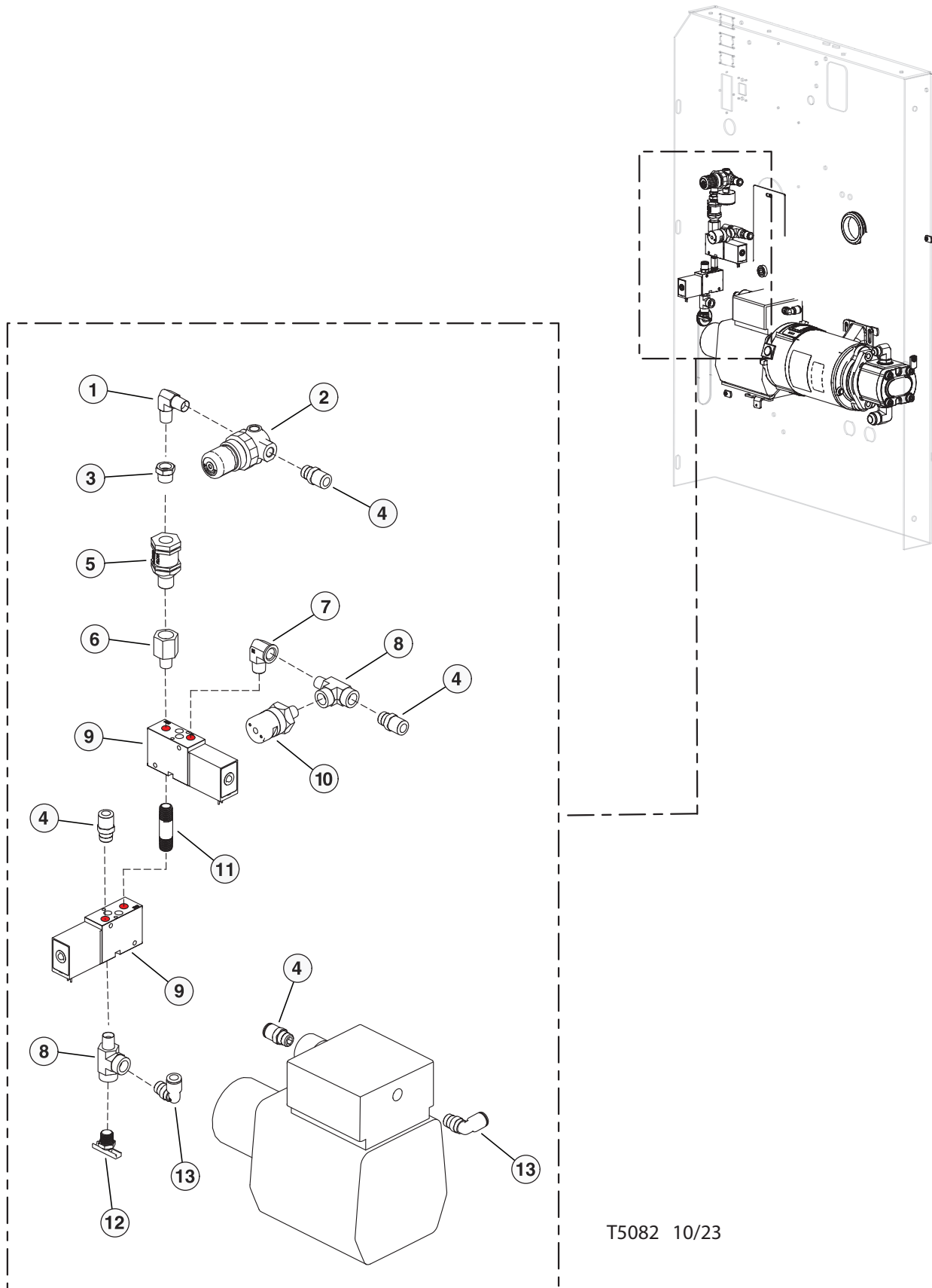


UPPER TURNTABLE

(VACUUM PUMP BREAKDOWN)

| REF | PART # | QTY | DESCRIPTION | SEE SECTION |
|-----|--------|-----|-----------------------|-------------|
| - | 51615 | 1 | VACUUM PUMP | |
| 1 | (CALL) | 1 | HEAD | |
| 2 | | 1 | O-RING, HEAD | |
| 3 | | 2 | FILTER, MUFFLER | |
| 4 | | 1 | VALVE, LIMITER | |
| 5 | | 2 | VALVE, LEAF | |
| 6 | | 1 | PLATE, VALVE | |
| 7 | | 1 | RETAINER, VALVE | |
| 8 | | 1 | SCREW, VALVE | |
| 9 | | 1 | PLATE, RETAINER | |
| 10 | | 1 | DIAPHRAGM, COMPRESSOR | |
| 10 | | 1 | DIAPHRAGM, VACUUM | |
| 11 | | 3 | SPACER, FELT | |
| 12 | | 1 | SPACER | |
| 13 | | 1 | FAN | |
| 14 | | 1 | GRILL | |
| 15 | | 4 | RIVET) | |
| 16 | (CALL) | 1 | ASSEMBLY, VALVE PLATE | |

UPPER TURNTABLE (VACUUM PUMP ASSEMBLY, FITTINGS & COMPONENTS)



T5082 10/23

UPPER TURNTABLE

(VACUUM PUMP ASSEMBLY, FITTINGS & COMPONENTS)

| REF | PART # | QTY | DESCRIPTION | SEE SECTION |
|-----|--------|-----|---|-------------|
| 1 | 52741 | 1 | ELBOW, MALE PIPE - 1/4 CR-S | |
| 2 | 15649 | 1 | REGULATOR, TURBO BOOST | |
| 3 | 11318 | 1 | BUSHING, REDUCER - 5406-6-4 | |
| 4 | 52506 | 4 | CONNECTOR, STR - PUSH HOSE - 1/4" VACUUM | |
| 5 | 15652 | 1 | VALVE, CHECK - HYDRAULIC/FUEL | |
| 6 | 52145 | 1 | ADAPTER, EXPANDER - 3/8 X 1/4 FG-S | |
| 7 | 21147 | 1 | ELBOW, 90 STREET .25" NPT - BRASS | |
| 8 | 10393 | 2 | TEE - 1/4 MRO | |
| 9 | 51616 | 2 | VALVE, 3-WAY VACUUM PUMP | |
| 10 | 51737 | 1 | SWITCH, PRESSURE - VACUUM PUMP | |
| 11 | 16314 | 1 | NIPPLE, PIPE - .25" X 2" | |
| 12 | 15650 | 1 | VALVE, TANK VENT - DC602-6 | |
| 13 | 51739 | 2 | CONNECTOR, ELBOW -PUSH ON (VACUUM) (1/4") | |

THIS PAGE LEFT BLANK FOR NOTES
